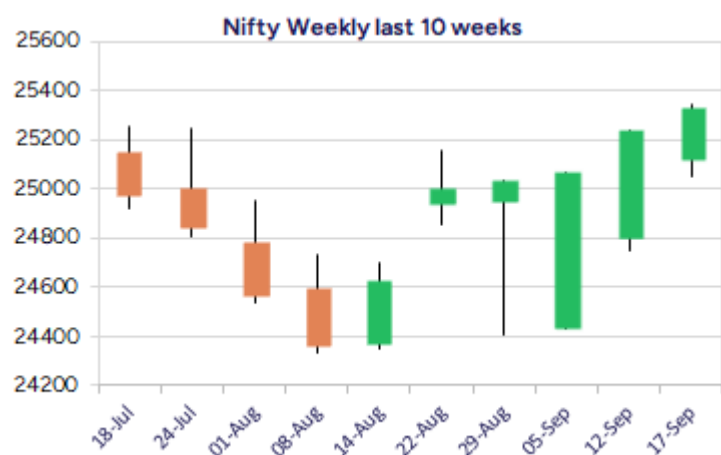
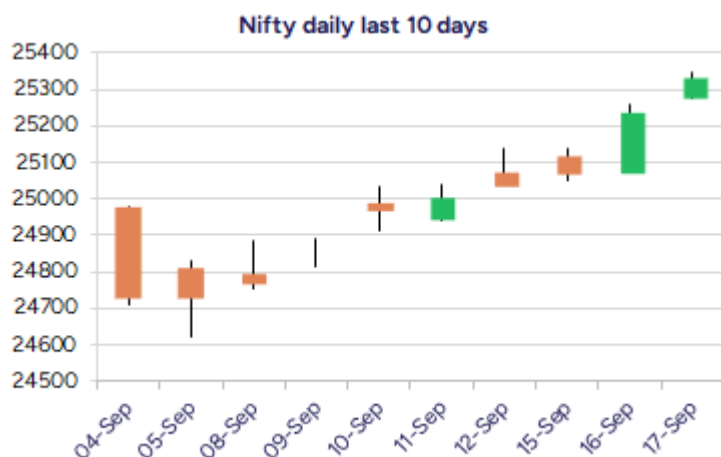


Date: 18<sup>th</sup> Sep 2025

\* Sensex 82693.71 + 313.02

\* Nifty 25330.25 + 91.15

\* Bank Nifty 55493.30 + 345.70



\*Blue candle → Close rate > Open rate \* Red candle → Close rate < Open rate

## Market Preview

### Nifty ends above the crucial hurdle of 25300 zone

Nifty has been slowly and steadily gaining strength moving above the important resistance band of 25250-25300 zone to improve the bias and sentiment as of now. BankNifty has breached above the 50EMA at 55150 zone with positive cues anticipated from the Fed Outcome, which would decide the further course of the index. The market breadth was overall positive with the advance decline indicating a ratio of 3:2 at close.

## Market Forecast

### Nifty daily range 25200 - 25500

Nifty, has indicated a breach above the important and crucial hurdle of 25250-25300 zone with bias and sentiment getting better, anticipating for further gains in the coming days with hopes of positive global cues awaited in the coming days. Sustaining above the important support of 25250 level, one can expect the index to achieve the near-term target of 25700 level with the broader markets indicating a fresh positive upward trend to further strengthen the overall bias as of now.

BankNifty, slowly and steadily has been gaining strength ahead of the Fed outcome, crossing the important 50EMA at 55150 zone to improve the bias and with the sentiment easing out, one can expect for next near-term target of 56200 level provided the 50EMA at 55150 level is sustained as of now. The PSU Banks have started showing signs of fresh upward move to support the BankNifty index and a decisive breach above 56200 zone shall trigger for fresh upward move in the coming days.

The support for the day is seen at 25200 levels, while the resistance is seen at 25500 levels. BankNifty would have the daily range of 55000-56200 levels.

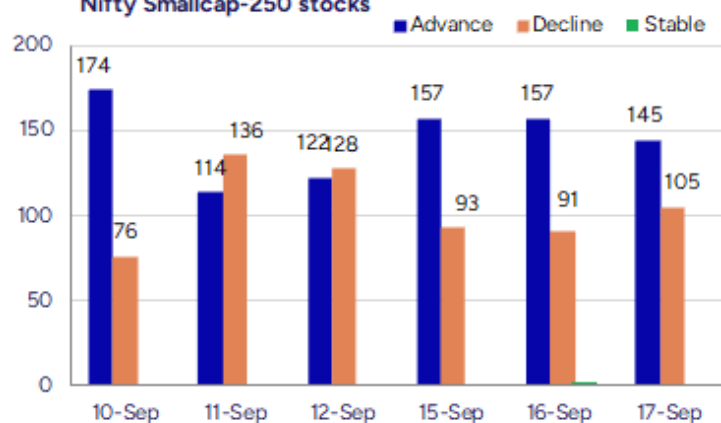
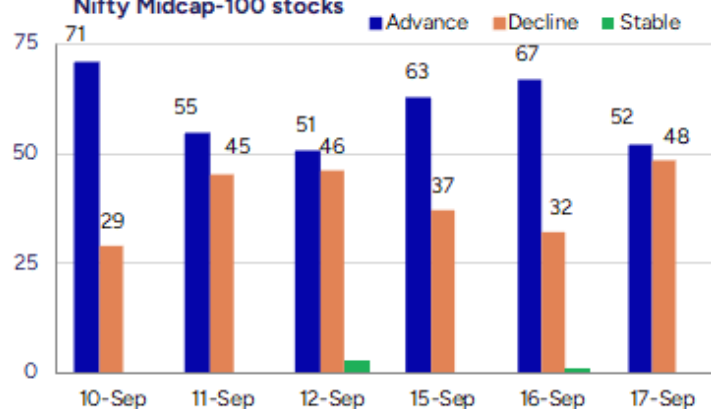
Indices	Period	Closing	% Chng	Trend	Reversal	2 Sup	1 Sup	Pivot	1 Res	2 Res
Nifty	Daily	25330.25	0.36%	11	25186.80	25246	25288	25317	25359	25389
	Weekly	25114.00	1.51%	2	24761.30	24615	24864	25002	25252	25389
	Monthly	24426.85	-1.38%	-1	24777.20	23826	24126	24639	24939	25452
Bank Nifty	Daily	55493.30	0.63%	11	54874.85	54999	55246	55394	55641	55788
	Weekly	54809.30	1.28%	-10	54851.95	53796	54303	54577	55084	55359
	Monthly	53655.65	-4.12%	-1	56293.50	51929	52792	54474	55337	57019
Sensex	Daily	82693.71	0.38%	11	82148.05	82391	82542	82642	82794	82894
	Weekly	81904.70	1.48%	1	80839.90	80288	81096	81545	82353	82801
	Monthly	79809.65	-1.69%	-2	81431.75	78110	78960	80593	81443	83075

**Gainers - Losers ( Nifty 500 Stocks )**
**Gainers**

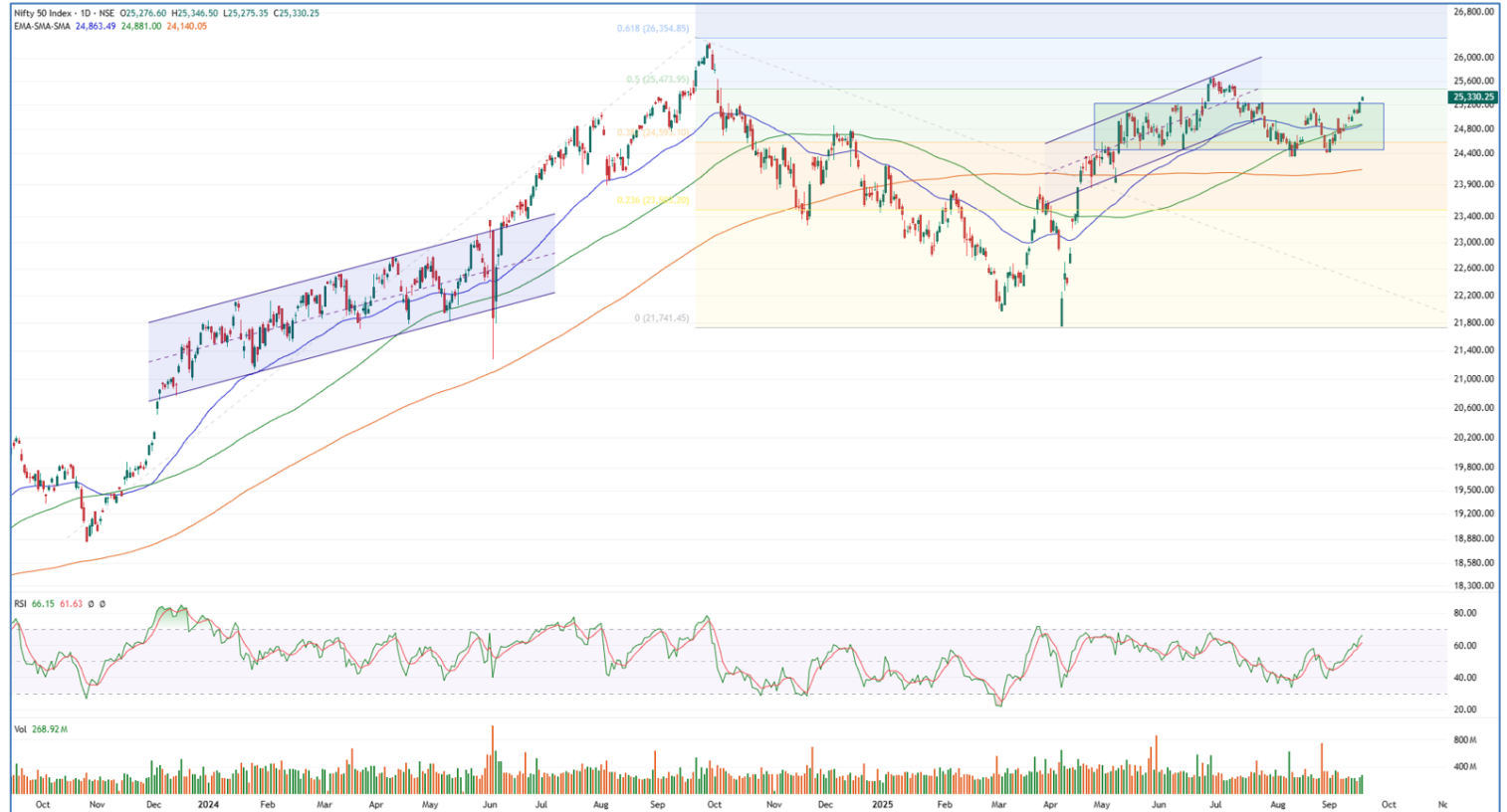
Company Name	Last Price	% Gain	Volume
TRF	392.75	20	356680
Smarten Power S	98.1	20	538800
Brand Concepts	329.5	19.99	137587
Superhouse	188.08	19.99	254727
IRM Energy	330.1	19.99	2674131
N R Vandana Tex	54.05	19.98	639000
Anlon Healthcar	128.65	17.78	4635070

**Losers**

Company Name	Last Price	% Loss	Volume
De Neers Tools	209.05	-20	2496000
Happy Square	80.25	-10.88	54400
Shradha Infra	49.65	-10.7	165929
Enfuse Solution	198	-10.2	117000
Nagreeka Export	36.1	-9.32	369516
Mangal Electric	496.4	-7.74	934542
Sharp Chucks	72.95	-7.42	39000

**Nifty Smallcap-250 stocks**

**Nifty Midcap-100 stocks**


## Nifty Daily chart with RSI indicator



## BankNifty Daily chart with RSI indicator



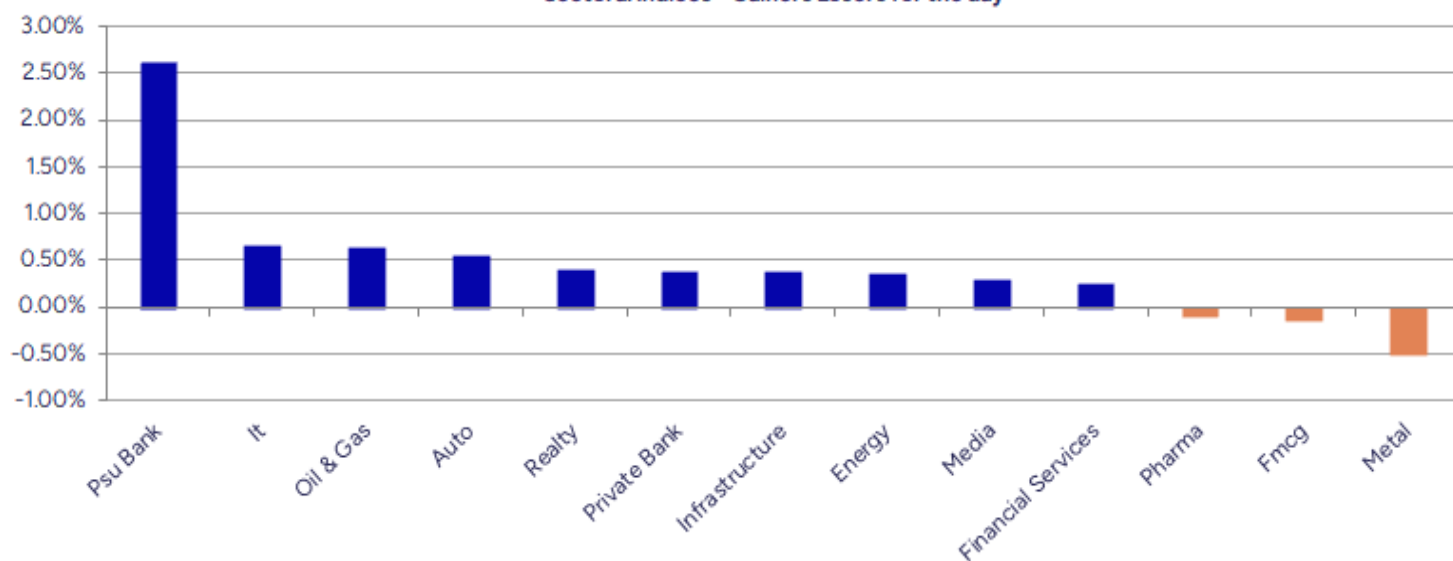
Breakouts - Cross above 200 DMA			
Company Name	LCP	Change %	200 DMA
IRM Energy	330.1	9.58	301.25
Superhouse	188.08	8.26	173.73
PC Jeweller	15.03	7.28	14.01
Platinum Indust	325.65	7.02	304.3
Welspun Enter	543.2	5.08	516.92
TRF	392.75	4.76	374.91
Cubex Tubings	97.18	4.23	93.24
Mahindra Life	384.4	3.59	371.07
Suryoday Small	133.14	3.43	128.73
TechEra Enginee	184.75	3.13	179.14
V2 Retail	1789.8	2.92	1739.03
Electrotherm	1030	2.84	1001.55
Veto Switch	122	2.72	118.77
Pil Italica	15.15	2.71	14.75
Minda Corp	531.65	2.41	519.12
Kriti Ind	141.41	2.32	138.21
Mandeep Auto In	31.9	2.28	31.19
Akash Infracproj	29.75	2.27	29.09

\* Stocks crossing above its Simple Moving Average (200DMA)

Breakdown - Cross below 200 DMA			
Company Name	LCP	Change %	200 DMA
ACE Integrated	25.12	-3.83	26.12
Destiny Logisti	109.25	-2.74	112.33
Zodiac Clothing	105.99	-2.20	108.37
BARTRONICS IND	15.7	-2.06	16.03
JHS Svendgaard	37.21	-1.90	37.93
Damodar Ind	36.1	-1.45	36.63
Magson Retail	110.2	-1.16	111.49
Kronox Lab Scie	169.39	-1.08	171.24
DC Infotech	284.85	-1.03	287.8
Agarwal Float	61.7	-0.87	62.24
Vinyl Chemicals	296.7	-0.83	299.19
Heranba	323.3	-0.79	325.88
BF Utilities	784.3	-0.73	790.03
Snowman Logist	57.15	-0.66	57.53
Uniphos Ent	154.21	-0.52	155.01
WOL 3D India	135.2	-0.51	135.89
Anant Raj	586	-0.39	588.28
IKIO Tech	222.5	-0.37	223.32

\* Stocks crossing below its Simple Moving Average (200DMA)

Sectoral Indices - Gainers Losers for the day



Stocks witnessing a volume surge as compared to their 5 day average volume

Watch out for the stocks that have seen a huge spurt in its share price over the last three days

Volume Shockers - NSE					
Company name	LCP	% Chg	Volume	Avg Vol *	% Chg
De Neers	209.05	-20	2491800	5880	42278
KNR Construct	204.85	5.2	61285790	638648	9496
DCM Shriram	1357.3	10.76	4192888	54302	7621
Cool Caps	94.65	-1.1	570000	8400	6686
Sigachi Ind	44.39	1	57858633	1046438	5429
SRM Contractors	552.45	8.53	1488639	38037	3814
The Western Ind	173	2.84	83357	2494	3243
Prozone Intu	50.48	16.85	6738402	210875	3095
Khadim India	290.89	11.65	586604	18435	3082
TRF	392.75	20	354547	11396	3011
Tega Industries	2112.9	2.1	598902	24591	2335
Jeena Sikho	839.8	5.34	428684	18612	2203
India Pesticide	235.55	8.8	4684560	212586	2104
PNC Infratech	311.3	2.2	3355497	159778	2000
Kothari Product	99.1	7.53	1916221	96505	1886
Nirman Agri	190.1	5	439500	22200	1880
Premier Explo	608.9	11.39	12947671	664081	1850
Huhtamaki India	240.2	4.56	1891905	102118	1753
BSL	173.15	6.1	234646	12958	1711
OnMobile Global	66.05	15.67	11366510	700563	1522

\* the Average Volume of last 5 days

Price Shockers - NSE				
Company name	LCP	Prv Close	% Chg	Volume
Superhouse	188.08	144.68	30	254669
Kothari Product	99.1	77.26	28.27	1916221
CCCL	28.54	22.28	28.1	6293168
P S Raj Steels	193	151.8	27.14	35000
Sindhu Trade	31.21	24.56	27.08	46599820
Mirza Intl	42.19	33.45	26.13	4356656
Brand Concepts	329.5	262.85	25.36	137585
OnMobile Global	66.05	53.52	23.41	11366510
Allied Digital	203.66	165.92	22.75	5369600
TRF	392.75	322.95	21.61	354547
Pavna Ind	40.35	33.35	20.99	0
AMD Industries	61.65	50.96	20.98	177595
Digispice Tech	31.33	26.03	20.36	416440
Redington	293.1	243.8	20.22	58471682
Banco Products	740.35	618.1	19.78	4389129
Nagreeka Export	36.09	30.31	19.07	368903
DC Infotech	284.85	239.4	18.98	44948
Prozone Realty	50.48	43.1	17.12	6738402
Shivam Auto	34.25	29.38	16.58	662439
Lasa Supergener	13.6	11.68	16.44	366909

\* the % price rise of the last 3 days



Nifty 50 stocks - Summary Details											
Symbol	LTP	Chng	% Chng	Volume (lacs)	Turnover (crs.)	52w High	Diff with 52w H	52w Low	Diff with 52w L	365 days % chng	30 days % chng
NIFTY 50	25330.25	91.15	0.36%	2688.79	23479.74	26277.35	3.60%	21743.65	16.49%	2.47%	-0.46%
ADANIENT	2408.00	8.60	0.36%	5.14	123.54	3211.00	25.01%	2025.00	18.91%	5.16%	-19.17%
ADANIPTS	1406.30	-1.90	-0.13%	10.62	149.15	1494.00	5.87%	995.65	41.24%	8.30%	-3.02%
APOLLOHOSP	7869.50	17.00	0.22%	2.49	196.69	7980.00	1.38%	6001.00	31.14%	0.40%	11.87%
ASIANPAINT	2494.50	13.60	0.55%	3.59	89.42	3394.90	26.52%	2124.75	17.40%	-1.89%	-26.12%
AXISBANK	1126.00	4.80	0.43%	55.91	628.15	1281.65	12.14%	933.50	20.62%	4.96%	-7.91%
BAJAJ-AUTO	9085.00	12.50	0.14%	1.73	157.18	12774.00	28.88%	7089.35	28.15%	10.46%	-22.70%
BAJAJFINSV	2060.00	-20.30	-0.98%	12.00	248.15	2135.00	3.51%	1551.65	32.76%	8.06%	9.81%
BAJFINANCE	1009.00	5.75	0.57%	69.94	704.93	1025.70	1.63%	645.10	56.41%	16.46%	-86.80%
BEL	411.80	8.90	2.21%	313.60	1290.86	436.00	5.55%	240.25	71.40%	4.68%	38.95%
BHARTIARTL	1940.50	1.00	0.05%	42.35	822.82	2045.80	5.15%	1511.00	28.42%	3.51%	18.66%
CIPLA	1560.00	1.00	0.06%	7.86	122.24	1702.05	8.35%	1335.00	16.85%	-0.32%	-6.07%
COALINDIA	399.50	3.70	0.93%	59.70	238.56	517.85	22.85%	349.25	14.39%	2.95%	-19.27%
DRREDDY	1311.50	1.10	0.08%	7.17	93.98	1405.90	6.71%	1020.00	28.58%	3.97%	-80.33%
EICHERMOT	6900.00	-27.50	-0.40%	3.11	214.36	6954.50	0.78%	4508.75	53.04%	20.19%	42.59%
GRASIM	2865.00	22.00	0.77%	7.85	225.36	2898.40	1.15%	2276.95	25.83%	2.82%	2.11%
HCLTECH	1480.60	-2.50	-0.17%	26.56	394.85	2012.20	26.42%	1302.75	13.65%	-0.45%	-18.19%
HDFCBANK	967.00	0.15	0.02%	173.60	1681.14	1018.85	5.09%	806.50	19.90%	-51.44%	-41.96%
HDFCLIFE	766.00	-8.35	-1.08%	23.29	179.08	820.75	6.67%	584.30	31.10%	-1.83%	9.77%
HEROMOTOCO	5350.00	34.00	0.64%	6.16	330.27	6246.25	14.35%	3344.00	59.99%	12.91%	-8.28%
HINDALCO	749.50	-6.45	-0.85%	41.82	314.40	772.65	3.00%	546.45	37.16%	8.73%	12.28%
HINDUNILVR	2574.00	-6.90	-0.27%	9.70	249.74	3035.00	15.19%	2136.00	20.51%	4.04%	-12.00%
ICICIBANK	1417.20	-4.40	-0.31%	74.84	1063.39	1500.00	5.52%	1186.00	19.49%	-0.40%	13.70%
INDUSINDBK	739.95	-2.30	-0.31%	22.79	168.65	1498.00	50.60%	606.00	22.10%	-3.57%	-49.30%
INFY	1521.50	10.20	0.67%	47.94	729.44	2006.45	24.17%	1307.00	16.41%	4.39%	-22.26%
ITC	410.05	-3.05	-0.74%	141.13	578.85	528.50	22.41%	390.15	5.10%	0.40%	-19.61%
JIOFIN	315.85	0.40	0.13%	88.25	279.63	363.00	12.99%	198.65	59.00%	-3.65%	-10.36%
JSWSTEEL	1113.60	-1.60	-0.14%	9.51	105.85	1122.60	0.80%	880.00	26.55%	6.67%	16.83%
KOTAKBANK	2051.00	29.30	1.45%	47.83	977.37	2301.90	10.90%	1679.05	22.15%	2.20%	11.06%
LT	3684.60	16.80	0.46%	16.10	594.07	3963.50	7.04%	2965.30	24.26%	-0.25%	1.52%
M&M	3635.00	27.00	0.75%	22.38	811.28	3723.80	2.38%	2425.00	49.90%	10.49%	31.72%
MARUTI	15790.00	217.00	1.39%	6.25	982.89	15818.00	0.18%	10725.00	47.23%	20.38%	26.44%
NESTLEIND	1203.40	-0.80	-0.07%	10.06	120.84	1389.00	13.36%	1055.00	14.07%	10.54%	-52.43%
NTPC	336.15	1.10	0.33%	79.35	266.64	448.45	25.04%	292.80	14.81%	-1.27%	-16.53%
ONGC	236.87	1.78	0.76%	76.28	180.33	302.00	21.57%	205.00	15.55%	-0.78%	-19.34%
POWERGRID	287.30	-1.05	-0.36%	190.09	545.52	366.25	21.56%	247.30	16.17%	-0.12%	-14.50%
RELIANCE	1413.00	7.70	0.55%	75.18	1061.52	1551.00	8.90%	1114.85	26.74%	2.29%	-52.29%
SBILIFE	1803.00	-15.80	-0.87%	7.07	127.88	1927.95	6.48%	1372.55	31.36%	-1.18%	-1.50%
SBIN	856.90	25.35	3.05%	172.38	1460.55	875.45	2.12%	680.00	26.01%	0.60%	5.15%
SHRIRAMFIN	626.00	7.90	1.28%	46.33	288.22	730.45	14.30%	493.35	26.89%	0.27%	-81.65%
SUNPHARMA	1620.80	10.30	0.64%	21.28	343.70	1960.35	17.32%	1553.05	4.36%	-1.88%	-13.12%
TATACONSUM	1135.70	43.60	3.99%	33.61	378.89	1234.30	7.99%	882.90	28.63%	3.89%	-9.77%
TATAMOTORS	719.00	5.75	0.81%	118.69	853.84	1000.40	28.13%	535.75	34.20%	7.32%	-28.11%
TATASTEEL	171.00	-1.02	-0.59%	213.79	365.69	172.90	1.10%	122.62	39.46%	10.77%	12.07%
TCS	3175.00	29.30	0.93%	24.18	766.54	4546.05	30.16%	2991.60	6.13%	4.08%	-30.44%
TECHM	1548.70	17.20	1.12%	19.46	299.61	1807.70	14.33%	1209.40	28.06%	3.01%	-7.52%
TITAN	3524.60	-32.20	-0.91%	6.60	232.86	3867.00	8.85%	2925.00	20.50%	1.93%	-5.58%
TRENT	5205.00	57.50	1.12%	8.29	431.02	8345.00	37.63%	4488.00	15.98%	-4.15%	-28.83%
ULTRACEMCO	12730.00	152.00	1.21%	2.64	335.64	13097.00	2.80%	10047.85	26.69%	2.12%	7.34%
WIPRO	254.17	0.16	0.06%	73.37	186.70	324.60	21.70%	228.00	11.48%	2.92%	-53.87%
ETERNAL	327.70	0.40	0.12%	148.93	487.45	334.40	2.00%	194.80	68.22%	2.80%	#VALUE!

## Disclaimer / Disclosures

### ANALYST CERTIFICATION

I, Mrs. Vaishali Parekh B.com, Research Analyst, author and the name subscribed to this report, hereby certify that all of the views expressed in this research report accurately reflect our views about the subject issuer(s) or securities. We also certify that no part of our compensation was, is, or will be directly or indirectly related to the specific recommendation(s) or view(s) in this report.

Terms & conditions and other disclosures:

Prabhudas Lilladher Pvt. Ltd, Mumbai, India (hereinafter referred to as "PL") is engaged in the business of Stock Broking, Portfolio Manager, Depository Participant and distribution for third party financial products. PL is a subsidiary of Prabhudas Lilladher Advisory Services Pvt Ltd. which has its various subsidiaries engaged in business of commodity broking, investment banking, financial services (margin funding) and distribution of third party financial/other products, details in respect of which are available at [www.plindia.com](http://www.plindia.com)

This document has been prepared by the Research Division of PL and is meant for use by the recipient only as information and is not for circulation. This document is not to be reported or copied or made available to others without prior permission of PL. It should not be considered or taken as an offer to sell or a solicitation to buy or sell any security.

The information contained in this report has been obtained from sources that are considered to be reliable. However, PL has not independently verified the accuracy or completeness of the same. Neither PL nor any of its affiliates, its directors or its employees accepts any responsibility of whatsoever nature for the information, statements and opinion given, made available or expressed herein or for any omission therein.

Recipients of this report should be aware that past performance is not necessarily a guide to future performance and value of investments can go down as well. The suitability or otherwise of any investments will depend upon the recipient's particular circumstances and, in case of doubt, advice should be sought from an independent expert/advisor.

Either PL or its affiliates or its directors or its employees or its representatives or its clients or their relatives may have position(s), make market, act as principal or engage in transactions of securities of companies referred to in this report and they may have used the research material prior to publication.

PL may from time to time solicit or perform investment banking or other services for any company mentioned in this document.

PL is registered as Research Analyst under Securities and Exchange Board of India (Research Analysts) Regulations, 2014 PL submits that no material disciplinary action has been taken on us by any Regulatory Authority impacting Equity Research Analysis activities.

PL or its research analysts or its associates or his relatives do not have any financial interest in the subject company.

PL or its research analysts or its associates or his relatives do not have actual/beneficial ownership of one per cent or more securities of the subject company at the end of the month immediately preceding the date of publication of the research report.

PL or its research analysts or its associates or his relatives do not have any material conflict of interest at the time of publication of the research report.

PL or its associates might have received compensation from the subject company in the past twelve months.

PL or its associates might have managed or co-managed public offering of securities for the subject company in the past twelve months or mandated by the subject company for any other assignment in the past twelve months.

PL or its associates might have received any compensation for investment banking or merchant banking or brokerage services from the subject company in the past twelve months.

PL or its associates might have received any compensation for products or services other than investment banking or merchant banking or brokerage services from the subject company in the past twelve months PL or its associates might have received any compensation or other benefits from the subject company or third party in connection with the research report.

PL encourages independence in research report preparation and strives to minimize conflict in preparation of research report. PL or its analysts did not receive any compensation or other benefits from the subject Company or third party in connection with the preparation of the research report. PL or its Research Analysts do not have any material conflict of interest at the time of publication of this report.

It is confirmed that Mrs.Vaishali Parekh B.com, Research Analyst of this report has not received any compensation from the companies mentioned in the report in the preceding twelve months compensation of our Research Analysts is not based on any specific merchant banking, investment banking or brokerage service transactions.

The Research analysts for this report certifies that all of the views expressed in this report accurately reflect his or her personal views about the subject company or companies and its or their securities, and no part of his or her compensation was, is or will be, directly or indirectly related to specific recommendations or views expressed in this report.

The research analysts for this report has not served as an officer, director or employee of the subject company PL or its research analysts have not engaged in market making activity for the subject company

Our sales people, traders, and other professionals or affiliates may provide oral or written market commentary or trading strategies to our clients that reflect opinions that are contrary to the opinions expressed herein, and our proprietary trading and investing businesses may make investment decisions that are inconsistent with the recommendations expressed herein. In reviewing these materials, you should be aware that any or all of the foregoing, among other things, may give rise to real or potential conflicts of interest.

PL and its associates, their directors and employees may (a) from time to time, have a long or short position in, and buy or sell the securities of the subject company or (b) be engaged in any other transaction involving such securities and earn brokerage or other compensation or act as a market maker in the financial instruments of the subject company or act as an advisor or lender/borrower to the subject company or may have any other potential conflict of interests with respect to any recommendation and other related information and opinions.