

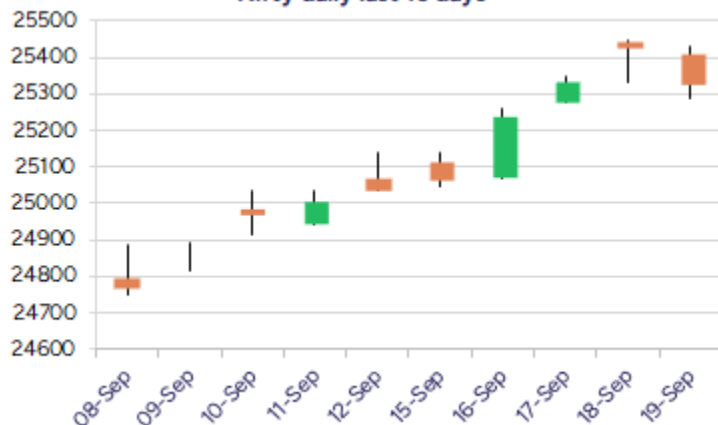
Date: 22<sup>nd</sup> September 2025

\* Sensex 82626.23 - 387.73

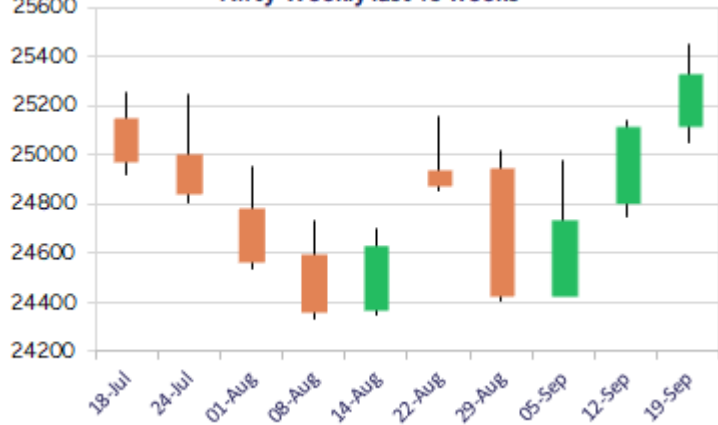
\* Nifty 25327.05 - 96.55

\* Bank Nifty 55458.85 - 268.60

Nifty daily last 10 days



Nifty Weekly last 10 weeks



\*Blue candle → Close rate > Open rate \* Red candle → Close rate < Open rate

## Market Preview

### Nifty takes a breather near 25450 zone

Nifty overall witnessed some profit booking during the session to lose some 100 points taking a breather after the long winning streak having 25250 zone as the important support. BankNifty after having witnessed a decent pullback took a halt and shed some gains to end near the 55450 zone with bias still maintained positive. The market breadth was overall flat with the advance decline indicating a neutral ratio at close.

## Market Forecast

### Nifty daily range 25200 - 25500

Nifty, after resisting near the 25450 zone in the previous session, witnessed some profit booking overall to end the day in the red after a long streak of winning sessions gaining more than 1000 points from the low made near 24400 zone. The overall bias is still maintained positive with the 25250-zone positioned as the important and crucial support which needs to be sustained as of now. On the upside, a decisive breach above 25500 level shall trigger for another fresh round of momentum which can retest the previous peak zone of 26277 level in the coming days. BankNifty, witnessed some profit booking after forming a lower top pattern on the daily chart to end the session near 55450 zone with overall bias maintained positive. The index would have the important 50EMA at 55150 zone as the near-term support which needs to be sustained, whereas on the upside, a decisive breach above 56200 zone shall trigger for fresh upward move in the coming days to retest the previous peak zone of 57628 levels. The support for the day is seen at 25200 levels, while the resistance is seen at 25500 levels. BankNifty would have the daily range of 55000-56000 levels.

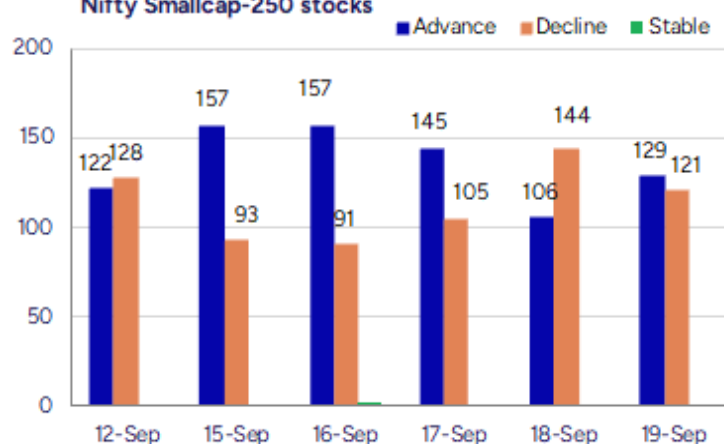
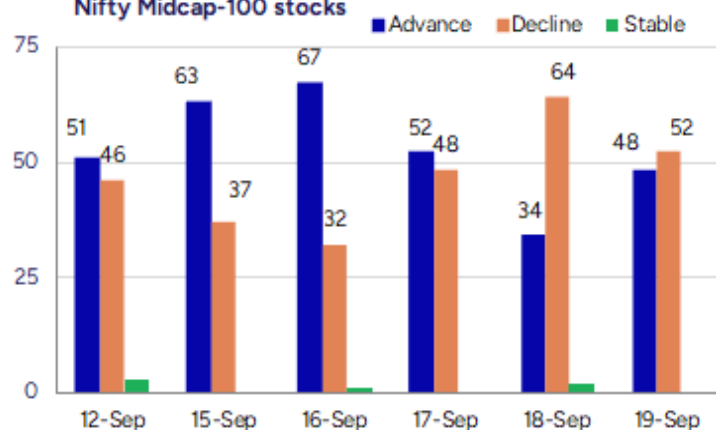
Indices	Period	Closing	% Chng	Trend	Reversal	2 Sup	1 Sup	Pivot	1 Res	2 Res
Nifty	Daily	25327.05	-0.38%	13	25307.95	25205	25266	25347	25408	25490
	Weekly	25327.05	0.85%	3	24911.20	24876	25101	25275	25501	25675
	Monthly	24426.85	-1.38%	-1	24777.20	23826	24126	24639	24939	25452
Bank Nifty	Daily	55458.85	-0.48%	13	55297.70	55168	55313	55501	55647	55834
	Weekly	55458.85	1.19%	1	54890.40	54301	54880	55358	55937	56414
	Monthly	53655.65	-4.12%	-1	56293.50	51929	52792	54474	55337	57019
Sensex	Daily	82626.23	-0.47%	13	82578.55	82204	82415	82697	82908	83190
	Weekly	82626.23	0.88%	2	81265.20	81109	81868	82505	83263	83900
	Monthly	79809.65	-1.69%	-2	81431.75	78110	78960	80593	81443	83075

**Gainers - Losers ( Nifty 500 Stocks )**
**Gainers**

Company Name	Last Price	% Gain	Volume
Natural Capsule	247.7	20	155975
Trigyn Tech	89.55	19.99	467176
Dhariwalcorp	214.6	19.99	1087200
Bharat Gears	113.99	19.17	2140180
Ushanti Colour	46	17.95	32000
Intense Tech	123.9	17.16	3983013
Adani Power	711.7	12.73	64919654

**Losers**

Company Name	Last Price	% Loss	Volume
Galaxy Medicare	46.35	-14.17	16000
De Neers Tools	188.75	-11.16	683400
Sungarner	243.25	-9.4	1000
Twamev Construc	22.32	-8.19	1171578
ATC Energies	58.45	-6.93	318000
Envirotech Sys	154	-6.67	57000
Current Infra	147	-6.55	166400

**Nifty Smallcap-250 stocks**

**Nifty Midcap-100 stocks**


## Nifty Daily chart with RSI indicator



## BankNifty Daily chart with RSI indicator

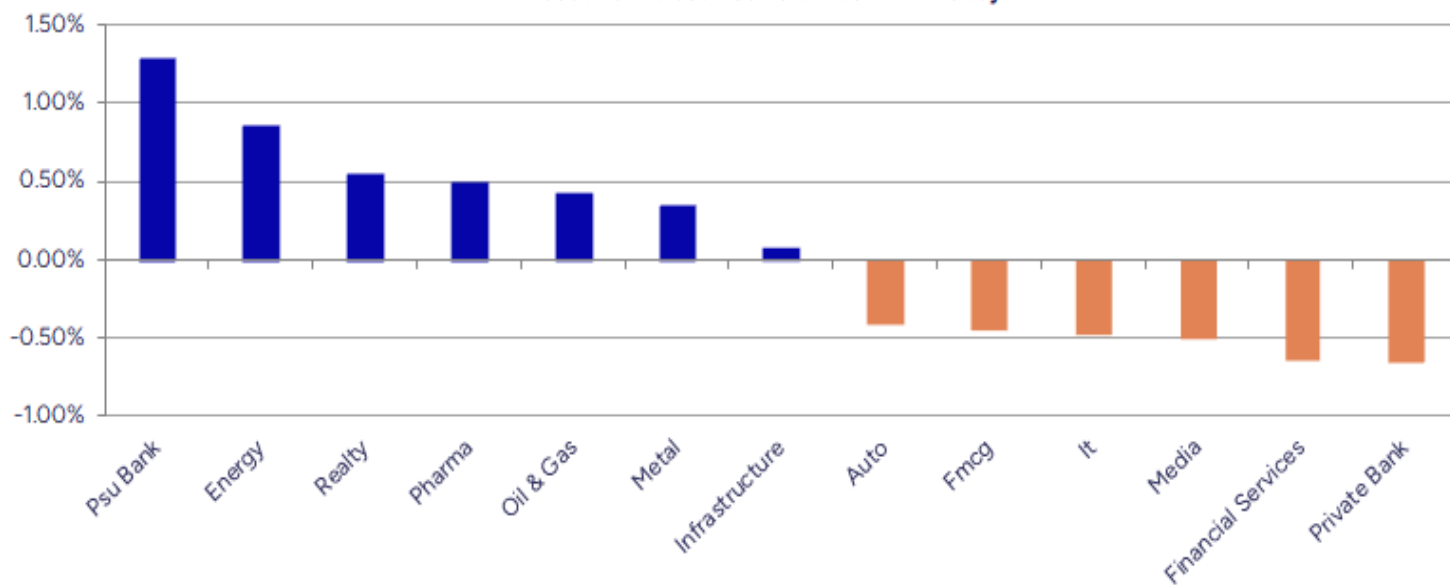


Breakouts - Cross above 200 DMA				Breakdown - Cross below 200 DMA			
Company Name	LCP	Change %	200 DMA	Company Name	LCP	Change %	200 DMA
Anant Raj	638	8.61	587.44	Ashoka Metcast	18.06	-4.24	18.86
Adani Green Ene	1043.6	6.56	979.38	TRF	362.95	-3.09	374.52
Aro Granite	41.83	4.86	39.89	Wanbury	251	-2.89	258.48
Supriya Lifesci	725	4.60	693.11	Walchandnagar	208.13	-1.76	211.85
Adani Total Gas	668.2	4.52	639.29	SMS Lifescience	1190	-1.59	1209.27
Lead Reclaim	82.4	4.26	79.03	Cello World	612.15	-1.43	621
Onelife Capital	13.62	3.57	13.15	Westlife Food	726.1	-1.41	736.52
Giriraj Civil D	322	3.51	311.09	Orbit Exports	188.11	-1.37	190.72
VIP Clothing	40.2	3.00	39.03	Abbott India	30275	-1.34	30687.59
Touchwood Enter	108.79	2.82	105.81	Afcons Infra	448.35	-1.20	453.8
Trigyn Tech	89.55	2.60	87.28	Genus Power	336.8	-0.98	340.15
IKIO Tech	228.2	2.39	222.87	Libas Consumer	13.5	-0.88	13.62
Nahar Capital	294	1.95	288.38	Shivam Auto	33.25	-0.86	33.54
Gujarat Fluoro	3828.6	1.94	3755.65	Vardhman Hold	3851	-0.83	3883.33
Alivus Life	1053.1	1.75	1034.95	Panacea Biotec	428.4	-0.80	431.86
Divis Labs	6202.5	1.33	6121.03	DC Infotech	285.17	-0.78	287.4
DOMS Industries	2632.7	1.29	2599.17	Anjani Portland	139.9	-0.67	140.85
Uniphos Ent	156.99	1.27	155.02	Greaves Cotton	221.15	-0.66	222.61

\* Stocks crossing above its Simple Moving Average (200DMA)

\* Stocks crossing below its Simple Moving Average (200DMA)

Sectoral Indices - Gainers Losers for the day



Stocks witnessing a volume surge as compared to their 5 day average volume

Watch out for the stocks that have seen a huge spurt in its share price over the last three days

Volume Shockers - NSE					
Company name	LCP	% Chg	Volume	Avg Vol *	% Chg
De Neers	188.75	-11.16	5880	11522	683400
Bharat Gears	112.85	17.98	26563	8048	2164438
Cool Caps	102.65	7.26	8400	6805	580000
Exicom Tele-Sys	161.85	11.79	189088	5769	11097610
FDC	492.1	3.61	94161	4959	4763999
Anup Eng	2540.6	11.5	22405	4317	989590
Adani Total Gas	668.2	10.09	322357	4138	13662267
IndiGrid Infra	172	2.5	1071389	3388	37365063
Netweb	3252.3	7.06	163390	3332	5608324
Intrasoft Tech	110.6	11.46	20307	3082	646193
Adani Green Ene	1043.6	6.61	480592	2967	14741667
Aro Granite	41.83	5.02	35183	2929	1065597
Sigachi Ind	44.35	2.33	1046438	2903	31420570
Sundaram-Clayto	1806.3	6.61	12404	2490	321324
SRM Contractors	561.9	4.6	38037	2241	890429
The Investment	153.27	1.96	11029	1951	226225
Natural Capsule	247.7	20	8328	1773	155976
Bhageria Indu	185.75	-2.32	141100	1542	2316479
Maheshwari Logi	59.75	0.15	11292	1513	182130
Ramky Infra	602.95	2.66	87438	1510	1407402

\* the Average Volume of last 5 days

Price Shockers - NSE				
Company name	LCP	Prv Close	% Chg	Volume
Intense Tech	123.88	88.1	40.61	3987329
Natural Capsule	247.7	187.64	32.01	155976
STL Networks	30.58	24.06	27.1	36636017
Snehaa Organics	110	89.5	22.91	305000
Trigyn Tech	89.55	73.48	21.87	467179
Banco Products	832.35	690.35	20.57	5391219
Supreme Holding	86.21	72.36	19.14	603615
Globe Internati	145.25	122	19.06	99000
Ushanti Colour	46	38.7	18.86	32000
VIP Clothing	40.2	33.96	18.37	1697168
Shalimar Paints	85.45	73.16	16.8	626600
Bharat Gears	112.85	96.64	16.77	2164438
Deepak Builders	164.6	141.19	16.58	642814
Superhouse	181.94	156.74	16.08	37326
Giriraj Civil D	322	277.9	15.87	4250
IZMO	1056.85	913	15.76	155248
Kavveri Defence	113.46	98.02	15.75	367062
Bafna Pharma	138.19	119.39	15.75	86627
Blue Coast	61.75	53.35	15.75	13986
Odigma Consulta	53.42	46.16	15.73	22120

\* the % price rise of the last 3 days



Nifty 50 stocks - Summary Details											
Symbol	LTP	Chng	% Chng	Volume (lacs)	Turnover (crs.)	52w High	Diff with 52w H	52w Low	Diff with 52w L	365 days % chng	30 days % chng
NIFTY 50	25327.05	-96.55	-0.38%	3802.92	38799.98	26277.35	3.62%	21743.65	16.48%	2.20%	0.02%
ADANIENT	2528.00	126.00	5.25%	79.64	2006.86	3211.00	21.27%	2025.00	24.84%	2.93%	-19.27%
ADANIPTS	1429.00	16.20	1.15%	80.68	1160.99	1494.00	4.35%	995.65	43.52%	5.94%	-1.44%
APOLLOHOSP	7805.00	-45.50	-0.58%	2.07	161.89	7980.00	2.19%	6001.00	30.06%	0.84%	12.56%
ASIANPAINT	2495.80	17.10	0.69%	37.31	927.32	3358.00	25.68%	2124.75	17.46%	-3.63%	-24.73%
AXISBANK	1140.00	7.00	0.62%	89.10	1013.05	1281.65	11.05%	933.50	22.12%	4.01%	-8.61%
BAJAJ-AUTO	8976.00	-99.00	-1.09%	4.68	420.22	12774.00	29.73%	7089.35	26.61%	5.77%	-23.99%
BAJAJFINSV	2070.50	1.30	0.06%	19.74	407.70	2135.00	3.02%	1551.65	33.44%	3.19%	11.27%
BAJFINANCE	994.00	-2.50	-0.25%	67.35	668.60	1025.70	3.09%	645.10	54.08%	11.30%	-86.32%
BEL	409.45	-0.45	-0.11%	161.48	662.03	436.00	6.09%	240.25	70.43%	7.76%	44.99%
BHARTIARTL	1959.90	18.80	0.97%	112.87	2205.80	2045.80	4.20%	1511.00	29.71%	2.59%	16.82%
CIPLA	1575.10	-3.10	-0.20%	14.64	230.09	1702.05	7.46%	1335.00	17.99%	-0.36%	-6.71%
COALINDIA	395.00	1.85	0.47%	52.71	207.75	517.85	23.72%	349.25	13.10%	3.08%	-18.17%
DRREDDY	1322.00	-0.70	-0.05%	14.09	186.14	1405.90	5.97%	1020.00	29.61%	3.86%	-80.23%
EICHERMOT	6980.50	56.00	0.81%	5.51	383.60	7018.00	0.53%	4508.75	54.82%	16.55%	42.07%
GRASIM	2884.40	5.60	0.19%	7.90	227.01	2898.40	0.48%	2276.95	26.68%	0.69%	4.01%
HCLTECH	1470.00	-23.80	-1.59%	31.98	470.33	2012.20	26.95%	1302.75	12.84%	-0.24%	-18.32%
HDFCBANK	967.00	-9.90	-1.01%	312.42	3021.79	1018.85	5.09%	806.50	19.90%	-51.76%	-42.08%
HDFCLIFE	785.00	0.40	0.05%	36.34	285.51	820.75	4.36%	584.30	34.35%	-2.90%	9.89%
HEROMOTOCO	5415.00	45.00	0.84%	5.79	312.60	6246.25	13.31%	3344.00	61.93%	7.34%	-10.25%
HINDALCO	744.50	-5.65	-0.75%	51.32	381.91	772.65	3.64%	546.45	36.24%	5.03%	9.82%
HINDUNILVR	2564.00	-22.80	-0.88%	22.14	568.29	3035.00	15.52%	2136.00	20.04%	0.06%	-10.57%
ICICIBANK	1402.50	-19.20	-1.35%	134.54	1889.17	1500.00	6.50%	1186.00	18.25%	-1.07%	11.92%
INDUSINDBK	744.00	8.55	1.16%	81.89	608.81	1498.00	50.33%	606.00	22.77%	-6.29%	-49.60%
INFY	1543.90	3.30	0.21%	129.85	1994.55	2006.45	23.05%	1307.00	18.13%	6.03%	-22.03%
ITC	410.00	-1.55	-0.38%	195.03	800.53	528.50	22.42%	390.15	5.09%	0.74%	-19.39%
JIOFIN	317.60	0.25	0.08%	176.66	561.72	363.00	12.51%	198.65	59.88%	-4.10%	-10.18%
JSWSTEEL	1125.50	4.40	0.39%	13.51	151.60	1126.00	0.04%	880.00	27.90%	2.89%	15.22%
KOTAKBANK	2038.80	-15.80	-0.77%	44.86	912.67	2301.90	11.43%	1679.05	21.43%	2.44%	11.03%
LT	3684.00	-2.00	-0.05%	22.27	819.81	3963.50	7.05%	2965.30	24.24%	1.39%	-0.26%
M&M	3600.90	-41.30	-1.13%	40.18	1447.46	3723.80	3.30%	2425.00	48.49%	7.39%	30.33%
MARUTI	15880.00	63.00	0.40%	6.52	1036.45	16060.00	1.12%	10725.00	48.07%	12.32%	29.03%
NESTLEIND	1197.50	-11.60	-0.96%	23.95	286.61	1389.00	13.79%	1055.00	13.51%	5.26%	-52.71%
NTPC	339.20	2.25	0.67%	106.45	360.42	448.45	24.36%	292.80	15.85%	0.10%	-19.19%
ONGC	237.15	1.56	0.66%	164.83	388.74	302.00	21.47%	205.00	15.68%	-0.54%	-19.61%
POWERGRID	286.75	-2.35	-0.81%	149.89	429.60	366.25	21.71%	247.30	15.95%	-1.10%	-14.77%
RELIANCE	1407.60	-7.40	-0.52%	134.61	1895.86	1551.00	9.25%	1114.85	26.26%	2.32%	-51.99%
SBILIFE	1846.00	24.20	1.33%	16.33	300.04	1927.95	4.25%	1372.55	34.49%	-3.17%	-0.83%
SBIN	862.55	8.20	0.96%	152.05	1309.14	875.45	1.47%	680.00	26.85%	3.56%	9.48%
SHRIRAMFIN	632.50	5.60	0.89%	64.15	406.50	730.45	13.41%	493.35	28.21%	-0.57%	-81.80%
SUNPHARMA	1658.00	9.40	0.57%	31.91	528.64	1960.35	15.42%	1553.05	6.76%	-0.77%	-13.18%
TATACONSUM	1128.70	-0.60	-0.05%	14.38	161.78	1233.65	8.51%	882.90	27.84%	6.07%	-6.88%
TATAMOTORS	706.90	-4.30	-0.60%	121.16	859.11	1000.40	29.34%	535.75	31.95%	6.38%	-26.24%
TATASTEEL	171.98	-0.05	-0.03%	253.96	435.64	172.90	0.53%	122.62	40.25%	8.48%	12.13%
TCS	3171.00	-5.70	-0.18%	49.01	1550.46	4497.05	29.49%	2991.60	6.00%	5.37%	-29.58%
TECHM	1557.00	6.30	0.41%	26.21	406.54	1807.70	13.87%	1209.40	28.74%	5.17%	-6.32%
TITAN	3470.00	-41.30	-1.18%	23.37	810.91	3867.00	10.27%	2925.00	18.63%	-0.89%	-6.49%
TRENT	5082.00	-62.00	-1.21%	11.05	563.18	8345.00	39.10%	4488.00	13.24%	-5.83%	-29.80%
ULTRACEMCO	12510.00	-116.00	-0.92%	5.72	717.20	13097.00	4.48%	10047.85	24.50%	-0.34%	9.23%
WIPRO	256.29	-0.64	-0.25%	107.40	274.74	324.60	21.04%	228.00	12.41%	3.65%	-53.95%
ETERNAL	337.65	-0.20	-0.06%	291.40	982.59	340.00	0.69%	194.80	73.33%	4.24%	#VALUE!

## Disclaimer / Disclosures

### ANALYST CERTIFICATION

I, Mrs. Vaishali Parekh B.com, Research Analyst, author and the name subscribed to this report, hereby certify that all of the views expressed in this research report accurately reflect our views about the subject issuer(s) or securities. We also certify that no part of our compensation was, is, or will be directly or indirectly related to the specific recommendation(s) or view(s) in this report.

Terms & conditions and other disclosures:

Prabhudas Lilladher Pvt. Ltd, Mumbai, India (hereinafter referred to as "PL") is engaged in the business of Stock Broking, Portfolio Manager, Depository Participant and distribution for third party financial products. PL is a subsidiary of Prabhudas Lilladher Advisory Services Pvt Ltd. which has its various subsidiaries engaged in business of commodity broking, investment banking, financial services (margin funding) and distribution of third party financial/other products, details in respect of which are available at [www.plindia.com](http://www.plindia.com)

This document has been prepared by the Research Division of PL and is meant for use by the recipient only as information and is not for circulation. This document is not to be reported or copied or made available to others without prior permission of PL. It should not be considered or taken as an offer to sell or a solicitation to buy or sell any security.

The information contained in this report has been obtained from sources that are considered to be reliable. However, PL has not independently verified the accuracy or completeness of the same. Neither PL nor any of its affiliates, its directors or its employees accepts any responsibility of whatsoever nature for the information, statements and opinion given, made available or expressed herein or for any omission therein.

Recipients of this report should be aware that past performance is not necessarily a guide to future performance and value of investments can go down as well. The suitability or otherwise of any investments will depend upon the recipient's particular circumstances and, in case of doubt, advice should be sought from an independent expert/advisor.

Either PL or its affiliates or its directors or its employees or its representatives or its clients or their relatives may have position(s), make market, act as principal or engage in transactions of securities of companies referred to in this report and they may have used the research material prior to publication.

PL may from time to time solicit or perform investment banking or other services for any company mentioned in this document.

PL is registered as Research Analyst under Securities and Exchange Board of India (Research Analysts) Regulations, 2014 PL submits that no material disciplinary action has been taken on us by any Regulatory Authority impacting Equity Research Analysis activities.

PL or its research analysts or its associates or his relatives do not have any financial interest in the subject company.

PL or its research analysts or its associates or his relatives do not have actual/beneficial ownership of one per cent or more securities of the subject company at the end of the month immediately preceding the date of publication of the research report.

PL or its research analysts or its associates or his relatives do not have any material conflict of interest at the time of publication of the research report.

PL or its associates might have received compensation from the subject company in the past twelve months.

PL or its associates might have managed or co-managed public offering of securities for the subject company in the past twelve months or mandated by the subject company for any other assignment in the past twelve months.

PL or its associates might have received any compensation for investment banking or merchant banking or brokerage services from the subject company in the past twelve months.

PL or its associates might have received any compensation for products or services other than investment banking or merchant banking or brokerage services from the subject company in the past twelve months PL or its associates might have received any compensation or other benefits from the subject company or third party in connection with the research report.

PL encourages independence in research report preparation and strives to minimize conflict in preparation of research report. PL or its analysts did not receive any compensation or other benefits from the subject Company or third party in connection with the preparation of the research report. PL or its Research Analysts do not have any material conflict of interest at the time of publication of this report.

It is confirmed that Mrs.Vaishali Parekh B.com, Research Analyst of this report has not received any compensation from the companies mentioned in the report in the preceding twelve months compensation of our Research Analysts is not based on any specific merchant banking, investment banking or brokerage service transactions.

The Research analysts for this report certifies that all of the views expressed in this report accurately reflect his or her personal views about the subject company or companies and its or their securities, and no part of his or her compensation was, is or will be, directly or indirectly related to specific recommendations or views expressed in this report.

The research analysts for this report has not served as an officer, director or employee of the subject company PL or its research analysts have not engaged in market making activity for the subject company

Our sales people, traders, and other professionals or affiliates may provide oral or written market commentary or trading strategies to our clients that reflect opinions that are contrary to the opinions expressed herein, and our proprietary trading and investing businesses may make investment decisions that are inconsistent with the recommendations expressed herein. In reviewing these materials, you should be aware that any or all of the foregoing, among other things, may give rise to real or potential conflicts of interest.

PL and its associates, their directors and employees may (a) from time to time, have a long or short position in, and buy or sell the securities of the subject company or (b) be engaged in any other transaction involving such securities and earn brokerage or other compensation or act as a market maker in the financial instruments of the subject company or act as an advisor or lender/borrower to the subject company or may have any other potential conflict of interests with respect to any recommendation and other related information and opinions.