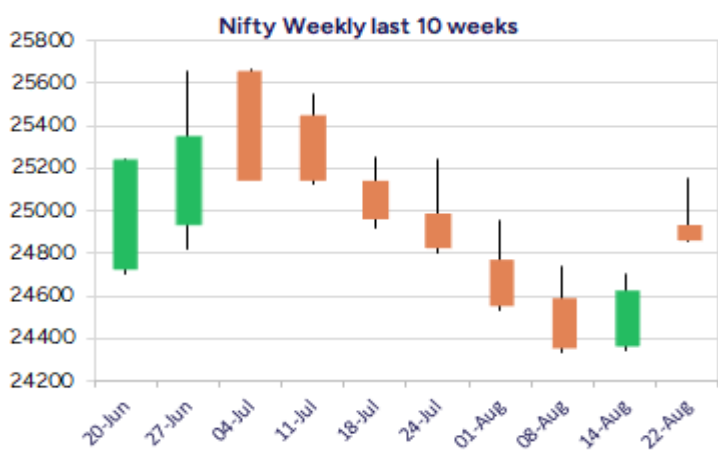
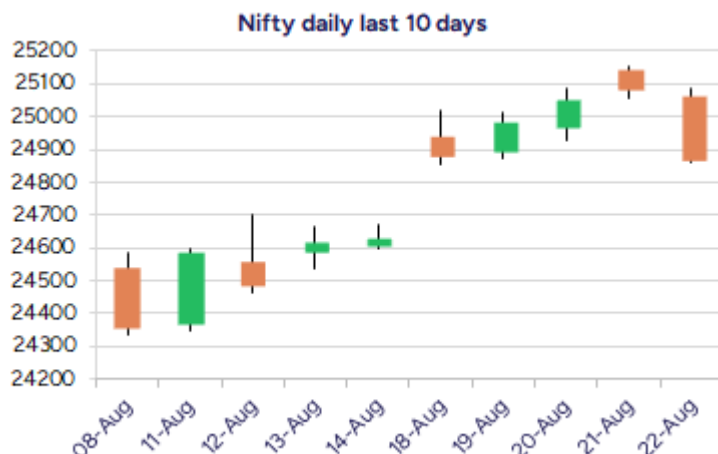


Date: 25<sup>th</sup> August 2025

\* Sensex 81306.85 - 693.86

\* Nifty 24870.10 - 213.65

\* Bank Nifty 55149.40 - 606.05



\*Blue candle → Close rate > Open rate \* Red candle → Close rate < Open rate

## Market Preview

### Nifty indicates a bearish candle on daily chart

Nifty plunged losing more than 200 points to move below the 25000 zone with bias and sentiment precariously placed having the important support near 24500 zone. BankNifty also tanked to close near the 55100 zone with bias getting weaker and precariously placed with 55000 as the crucial support zone. The market breadth was weak with the advance decline indicating a ratio of 2:3 at close.

## Market Forecast

### Nifty daily range 24700 - 25000

Nifty witnessed heavy profit booking during the intraday session to form a bearish candle on the daily chart with a lower top formation to signify bias turning weak and can expect for downward movement in the coming sessions. The index would have the important 50EMA level near the 24850-zone and as mentioned earlier, has got the crucial and important support near the 24500 zone which needs to be sustained to maintain the overall trend intact. On the upside, a decisive breach above the 25000 zone shall change the sentiment once again, thereafter, expecting for further upward move.

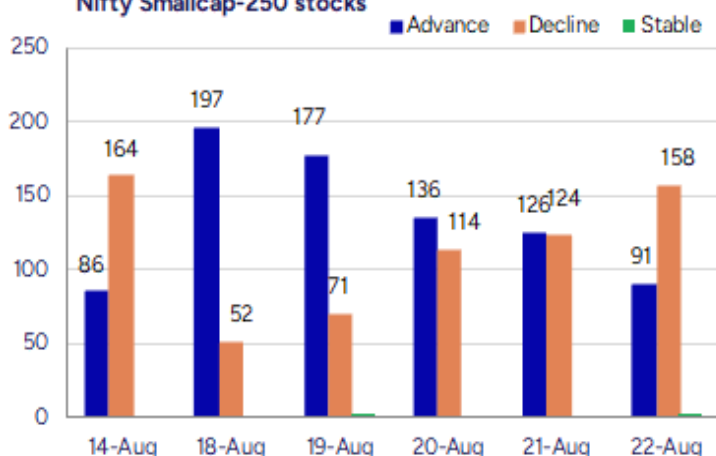
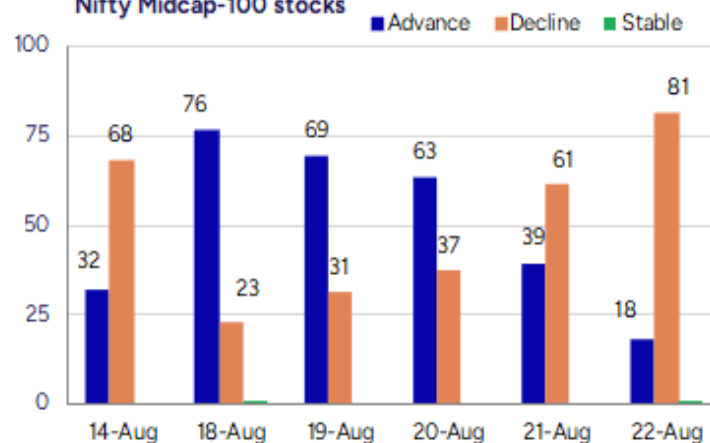
BankNifty finally plunged from the 56000 level, with bias getting weaker as the day progressed to end near the 55100-zone nearing the crucial support of 55000 level. The overall sentiment has once again turned cautious with many developments in the pipeline which shall decide the course of the market in the coming days. The index is precariously placed and with a decisive breach below the 55000 zone shall trigger for fresh downward movement with the trend turning weak.

The support for the day is seen at 24700 levels, while the resistance is seen at 25000 levels. BankNifty would have the daily range of 54700-55700 levels.

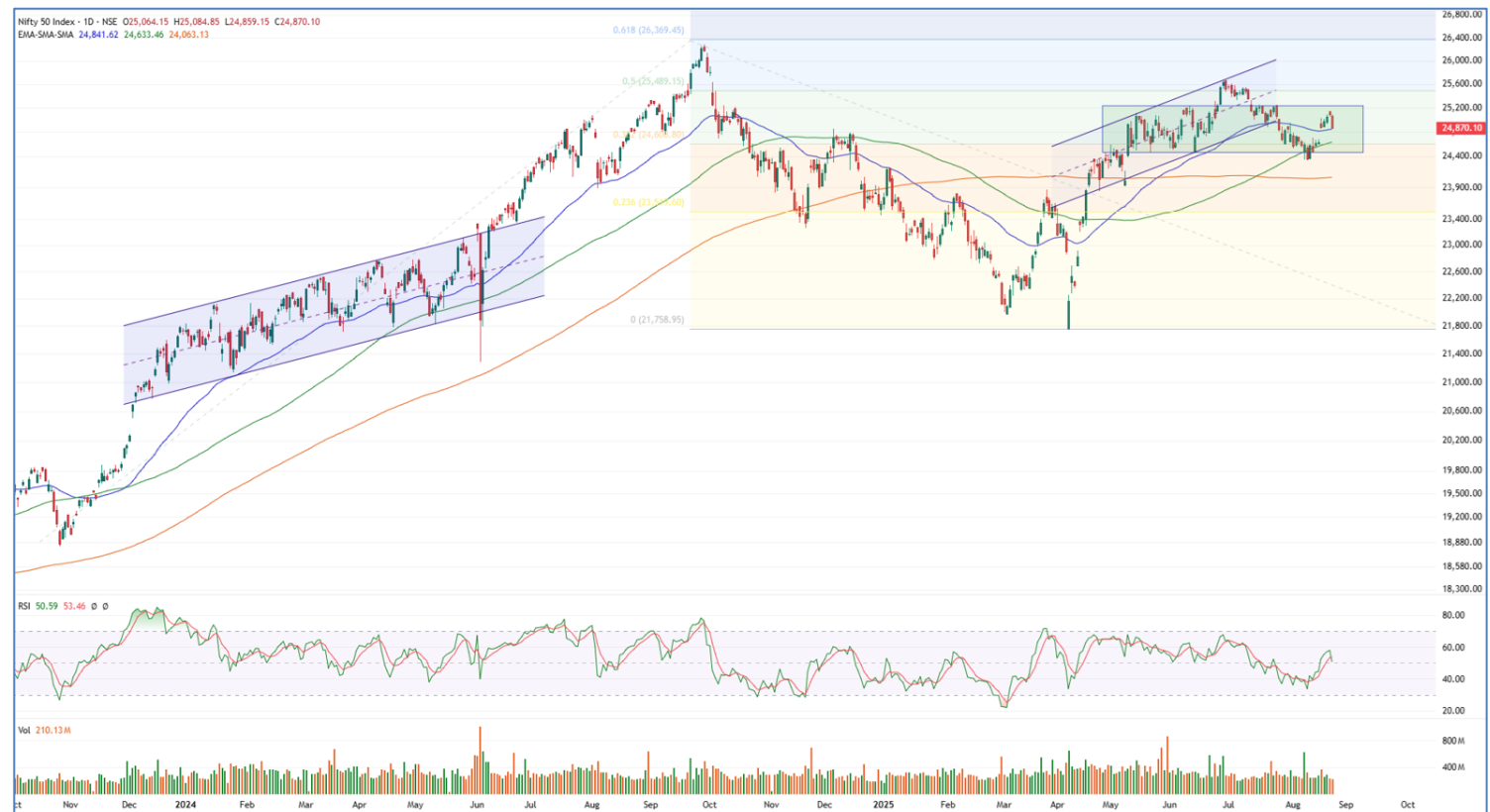
Indices	Period	Closing	% Chng	Trend	Reversal	2 Sup	1 Sup	Pivot	1 Res	2 Res
Nifty	Daily	24870.10	-0.85%	9	24903.05	24712	24791	24938	25017	25164
	Weekly	24870.10	0.97%	-7	24803.40	24660	24765	24958	25063	25256
	Monthly	24768.35	-2.93%	3	24708.35	23999	24384	24994	25379	25990
Bank Nifty	Daily	55149.40	-1.09%	-1	55436.50	54690	54920	55332	55562	55975
	Weekly	55149.40	-0.35%	-7	56036.20	54423	54786	55471	55834	56519
	Monthly	55961.95	-2.36%	4	55173.20	54361	55162	56360	57160	58359
Sensex	Daily	81306.85	-0.85%	9	81375.00	80829	81068	81531	81770	82233
	Weekly	81306.85	0.88%	-7	81196.40	80556	80931	81578	81954	82601
	Monthly	81185.58	-2.90%	-1	81149.00	78601	79893	81912	83205	85224

**Gainers - Losers ( Nifty 500 Stocks )**

Gainers				Losers			
Company Name	Last Price	% Gain	Volume	Company Name	Last Price	% Loss	Volume
CCCL	17.88	20	8308036	Shankara Buildi	1032.5	-8.22	249230
Chembond Chem	217.18	20	149066	Wonder Elect.	144.25	-8.13	1546969
Nephro Care Ind	174.1	19.99	350400	Force Motors	20214	-7.69	212895
IZMO	587.55	19.99	2478573	Vimta Labs	657.75	-7.65	1724053
Sahasra Electro	275.7	19.95	237600	Dev Information	44.75	-7.56	230542
Manglam Infra	32.6	18.12	362000	Kotyark Ind	351	-7.16	34600
Foseco India	6469	15.28	240421	Premium Plast	34.5	-7.13	6000

**Nifty Smallcap-250 stocks**

**Nifty Midcap-100 stocks**


## Nifty Daily chart with RSI indicator



## BankNifty Daily chart with RSI indicator



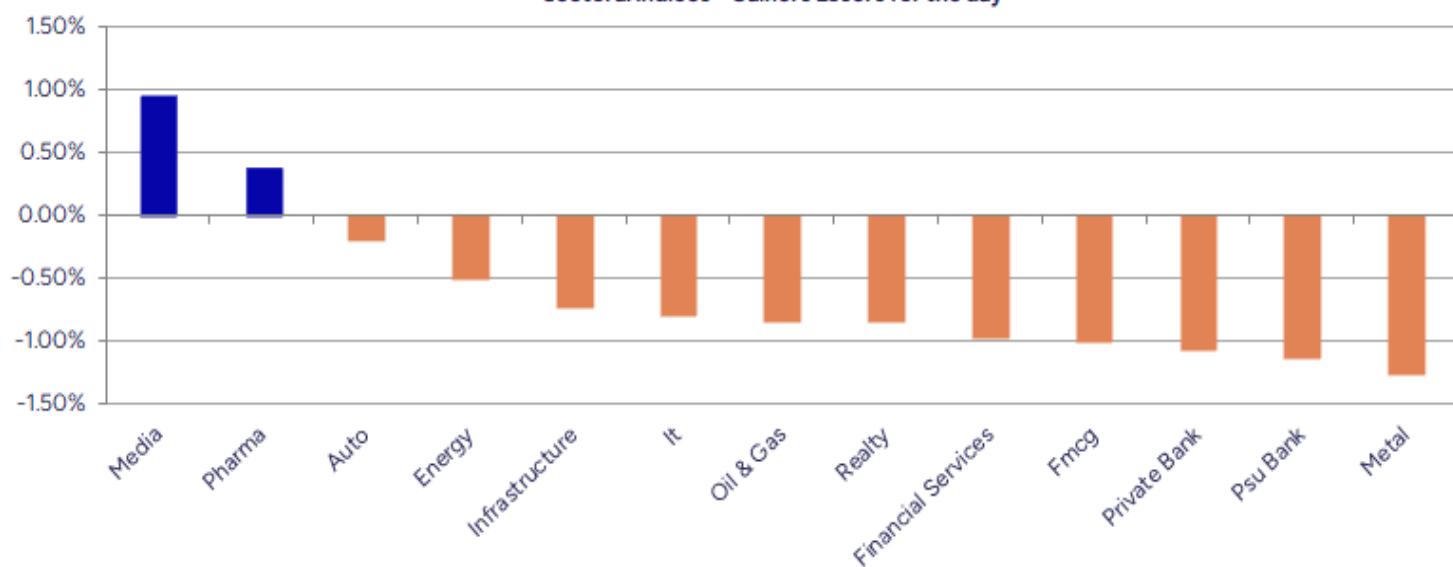
Breakouts - Cross above 200 DMA			
Company Name	LCP	Change %	200 DMA
Shanthala	42.85	12.26	38.17
Orissa Bengal C	60.38	9.60	55.09
Nephro Care Ind	174.1	8.59	160.33
CCCL	17.88	8.36	16.5
Indiabulls Ent	19.25	3.38	18.62
Astec Life	902.5	3.36	873.18
Aarvi Encon	121.54	3.26	117.7
HCL Info	15.96	3.23	15.46
Zee Entertain	123.58	3.03	119.95
Network People	2342.9	2.68	2281.72
Balkrishna	21.73	2.31	21.24
Airo Lam	112.29	2.26	109.81
Touchwood Enter	111.4	2.03	109.18
E Factor Experi	226.8	1.62	223.18
Automotive Axle	1769.2	1.58	1741.73
Softtech Engine	394.4	1.34	389.19
V2 Retail	1720.8	1.28	1699.02
SKP Bearing	232.2	1.19	229.47

\* Stocks crossing above its Simple Moving Average (200DMA)

Breakdown - Cross below 200 DMA			
Company Name	LCP	Change %	200 DMA
Tirupati Forge	41.99	-3.67	43.59
D.K. Enterprise	70.5	-3.24	72.86
Veranda Learnin	221.47	-2.97	228.26
MOTHERSON	95.16	-2.38	97.48
Lodha Developer	1261	-2.27	1290.23
Loyal Textiles	301.4	-2.05	307.72
Ambika Cotton	1478.2	-1.56	1501.67
SATIA	83.79	-1.42	85
Silkflex Poly	82	-1.39	83.16
Sansera	1297.5	-1.35	1315.31
Shriram Propert	89.65	-1.34	90.87
Total Transport	74	-1.33	75
Antony Waste	592.25	-1.26	599.83
Optiemus Infra	586.9	-1.26	594.36
Prakash Ind	162.07	-1.23	164.08
Mayur Uniquoter	542.55	-1.21	549.21
Uttam Sugar	263.1	-1.18	266.23
Federal Bank	196.34	-1.11	198.55

\* Stocks crossing below its Simple Moving Average (200DMA)

Sectoral Indices - Gainers Losers for the day



Stocks witnessing a volume surge as compared to their 5 day average volume

Watch out for the stocks that have seen a huge spurt in its share price over the last three days

Volume Shockers - NSE					
Company name	LCP	% Chg	Volume	Avg Vol *	% Chg
R Systems Intl	446.2	5.36	17694559	101206	17384
Kross	189.11	10.58	18429215	153949	11871
Royal Orchid	482.7	12.58	11570586	98230	11679
Airo Lam	112.29	3.73	121303	2277	5228
Netweb	2322.4	12.42	6896980	163390	4121
Nagreeka Export	27.54	3.34	381960	9347	3986
DCX Systems	267.05	7.1	19578219	507710	3756
KCK Industries	42.2	3.69	435000	13600	3099
CCCL	17.88	20	8308036	318884	2505
Krishival Foods	410.1	2.65	30179	1200	2415
AMD Industries	51.05	1.86	195415	8005	2341
Ideaforge Tech	499.05	7.95	5607017	273033	1954
D P Wires	249.51	2.44	803061	40532	1881
Motor and Gen F	27.08	3.6	133131	7477	1681
BEW Engineering	163.3	1.68	19000	1125	1589
R M Drip & Spri	721.25	-0.9	157005	9800	1502
IZMO	587.55	19.99	2478573	160825	1441
Agro Phos India	45.04	4.99	433894	29958	1348
Sula Vineyards	267.3	3.07	2667292	198913	1241
Cool Caps	81.85	0.24	102500	8400	1120

\* the Average Volume of last 5 days

Price Shockers - NSE				
Company name	LCP	Prv Close	% Chg	Volume
IZMO	587.55	408	44.01	2478573
Manglam Infra	32.6	24.05	35.55	362000
Foseco India	6469	5049	28.12	240421
BGR Energy	172.7	135.94	27.04	782791
Silgo Retail	75.6	59.51	27.04	217463
Lancor Holdings	26.6	21.01	26.61	2391117
D P Wires	249.51	203.64	22.53	803061
Kaushalya Infra	1055.4	874.2	20.73	0
Sadbhav Engg	17.29	14.44	19.74	3074857
Apollo Micro Sy	235.16	198.64	18.39	88948291
Zuari Ind.	341.35	290.75	17.4	292767
CCCL	17.88	15.26	17.17	8308036
Chembond Chem	217.18	185.44	17.12	149066
Balaji Phosphat	174.2	149.5	16.52	146000
Tirupati Forge	41.99	36.06	16.44	699617
Nacl Industries	283.85	245.25	15.74	456470
Abha Power	50.75	43.85	15.74	60800
Agro Phos India	45.04	38.92	15.72	433894
Kavveri Defence	71.17	61.5	15.72	22256
HOV Services	70.73	61.12	15.72	21880

\* the % price rise of the last 3 days



Nifty 50 stocks - Summary Details											
Symbol	LTP	Chng	% Chng	Volume (lacs)	Turnover (crs.)	52w High	Diff with 52w H	52w Low	Diff with 52w L	365 days % chng	30 days % chng
NIFTY 50	24870.10	-213.65	-0.85%	2101.58	19655.20	26277.35	5.36%	21743.65	14.38%	0.09%	1.27%
ADANIENT	2323.00	-54.20	-2.28%	5.84	136.56	3211.00	27.65%	2025.00	14.72%	-8.14%	-23.70%
ADANIPTS	1340.90	-20.90	-1.53%	12.10	163.01	1517.00	11.61%	995.65	34.68%	-4.15%	-9.42%
APOLLOHOSP	7930.00	3.50	0.04%	8.44	668.45	7980.00	0.63%	6001.00	32.14%	9.38%	17.39%
ASIANPAINT	2505.00	-61.60	-2.40%	5.24	131.94	3394.90	26.21%	2124.75	17.90%	8.52%	-18.56%
AXISBANK	1070.70	-8.20	-0.76%	38.54	413.27	1281.65	16.46%	933.50	14.70%	-1.74%	-8.13%
BAJAJ-AUTO	8685.00	0.50	0.01%	3.70	320.04	12774.00	32.01%	7089.35	22.51%	4.70%	-11.85%
BAJAJFINSV	1967.60	-12.40	-0.63%	7.09	139.67	2135.00	7.84%	1551.65	26.81%	-2.92%	22.15%
BAJFINANCE	896.10	0.50	0.06%	64.24	575.99	978.80	8.45%	645.10	38.91%	-5.98%	-86.70%
BEL	375.15	0.95	0.25%	152.46	575.24	436.00	13.96%	240.25	56.15%	-7.17%	22.53%
BHARTIARTL	1933.00	3.10	0.16%	32.72	631.87	2045.80	5.51%	1447.70	33.52%	1.21%	31.87%
CIPLA	1592.00	-0.80	-0.05%	15.75	250.80	1702.05	6.47%	1335.00	19.25%	8.77%	-0.11%
COALINDIA	374.30	-3.85	-1.02%	46.99	176.31	543.55	31.14%	349.25	7.17%	-2.81%	-28.95%
DRREDDY	1275.00	-1.60	-0.13%	12.30	157.20	1421.49	10.31%	1020.00	25.00%	2.95%	-81.92%
EICHERMOT	5930.00	-45.00	-0.75%	2.73	162.50	6024.50	1.57%	4508.75	31.52%	9.84%	21.60%
GRASIM	2807.80	-73.40	-2.55%	6.72	189.80	2898.40	3.13%	2276.95	23.31%	5.82%	7.31%
HCLTECH	1467.10	-26.40	-1.77%	28.03	412.28	2012.20	27.09%	1302.75	12.62%	-1.75%	-10.96%
HDFCBANK	1965.50	-25.70	-1.29%	99.17	1952.26	2037.70	3.54%	1613.00	21.85%	-0.79%	22.48%
HDFCLIFE	789.50	-5.95	-0.75%	13.32	105.27	820.75	3.81%	584.30	35.12%	4.21%	9.79%
HEROMOTOCO	4992.30	-104.80	-2.06%	13.57	680.88	6246.25	20.08%	3344.00	49.29%	17.38%	-3.55%
HINDALCO	702.65	-4.65	-0.66%	56.22	396.91	772.65	9.06%	546.45	28.58%	2.50%	3.17%
HINDUNILVR	2631.90	-16.10	-0.61%	12.23	321.92	3035.00	13.28%	2136.00	23.22%	6.79%	-5.13%
ICICIBANK	1435.90	-10.10	-0.70%	66.57	956.43	1500.00	4.27%	1165.10	23.24%	-1.87%	23.08%
INDUSINDBK	761.90	-5.55	-0.72%	24.84	189.84	1498.00	49.14%	606.00	25.73%	-8.98%	-44.55%
INFY	1487.90	-8.50	-0.57%	55.43	827.12	2006.45	25.84%	1307.00	13.84%	-4.74%	-20.09%
ITC	398.30	-7.25	-1.79%	130.88	523.38	528.50	24.64%	390.15	2.09%	-2.51%	-19.76%
JIOFIN	320.50	-3.35	-1.03%	88.00	284.29	363.00	11.71%	198.65	61.34%	4.20%	-2.19%
JSWSTEEL	1054.40	-17.40	-1.62%	19.50	205.94	1089.20	3.20%	880.00	19.82%	3.99%	15.77%
KOTAKBANK	1983.30	-34.50	-1.71%	17.92	357.15	2301.90	13.84%	1679.05	18.12%	-6.59%	11.30%
LT	3592.00	-20.60	-0.57%	10.60	382.04	3963.50	9.37%	2965.30	21.13%	4.27%	0.46%
M&M	3400.10	25.00	0.74%	25.10	853.31	3432.00	0.93%	2425.00	40.21%	3.62%	21.87%
MARUTI	14370.00	90.00	0.63%	4.59	657.41	14401.00	0.22%	10725.00	33.99%	14.31%	16.85%
NESTLEIND	1159.80	-19.60	-1.66%	9.22	107.62	1389.00	16.50%	1055.00	9.93%	-51.73%	-53.78%
NTPC	336.95	-1.85	-0.55%	85.35	287.68	448.45	24.86%	292.80	15.08%	-0.60%	-17.15%
ONGC	236.20	-2.09	-0.88%	54.24	128.54	334.40	29.37%	205.00	15.22%	-3.30%	-27.28%
POWERGRID	283.80	-0.20	-0.07%	68.25	193.13	366.25	22.51%	247.30	14.76%	-4.63%	-15.64%
RELIANCE	1409.90	-14.90	-1.05%	58.19	822.78	1551.00	9.10%	1114.85	26.47%	0.85%	-52.46%
SBILIFE	1857.00	-20.30	-1.08%	6.06	112.74	1936.00	4.08%	1372.55	35.30%	3.78%	4.26%
SBIN	816.80	-8.90	-1.08%	50.97	417.61	875.45	6.70%	680.00	20.12%	1.31%	1.24%
SHRIRAMFIN	616.25	-3.55	-0.57%	34.96	215.31	730.45	15.63%	493.35	24.91%	-3.18%	-80.38%
SUNPHARMA	1639.50	-0.70	-0.04%	20.98	345.16	1960.35	16.37%	1553.05	5.57%	-2.25%	-7.05%
TATACONSUM	1085.50	-2.60	-0.24%	3.95	42.87	1234.30	12.06%	882.90	22.95%	0.30%	-7.60%
TATAMOTORS	680.95	-4.45	-0.65%	64.30	438.52	1142.00	40.37%	535.75	27.10%	1.78%	-36.84%
TATASTEEL	158.30	-3.21	-1.99%	160.64	256.63	170.18	6.98%	122.62	29.10%	-0.94%	6.31%
TCS	3054.70	-47.90	-1.54%	15.94	489.01	4592.25	33.48%	2991.60	2.11%	-1.80%	-31.83%
TECHM	1503.00	-18.30	-1.20%	9.70	146.21	1807.70	16.86%	1209.40	24.28%	-1.67%	-5.19%
TITAN	3618.90	2.60	0.07%	6.92	250.55	3867.00	6.42%	2925.00	23.72%	4.14%	1.57%
TRENT	5420.00	-32.50	-0.60%	4.44	241.36	8345.00	35.05%	4488.00	20.77%	1.72%	-19.62%
ULTRACEMCO	12605.00	-265.00	-2.06%	2.27	288.25	12930.00	2.51%	10047.85	25.45%	3.36%	14.90%
WIPRO	248.74	-1.17	-0.47%	135.71	338.27	324.60	23.37%	228.00	9.10%	-3.77%	-52.52%
ETERNAL	318.75	-3.05	-0.95%	228.68	733.87	331.35	3.80%	194.80	63.63%	7.34%	#VALUE!

## Disclaimer / Disclosures

### ANALYST CERTIFICATION

I, Mrs. Vaishali Parekh B.com, Research Analyst, author and the name subscribed to this report, hereby certify that all of the views expressed in this research report accurately reflect our views about the subject issuer(s) or securities. We also certify that no part of our compensation was, is, or will be directly or indirectly related to the specific recommendation(s) or view(s) in this report.

Terms & conditions and other disclosures:

Prabhudas Lilladher Pvt. Ltd, Mumbai, India (hereinafter referred to as "PL") is engaged in the business of Stock Broking, Portfolio Manager, Depository Participant and distribution for third party financial products. PL is a subsidiary of Prabhudas Lilladher Advisory Services Pvt Ltd. which has its various subsidiaries engaged in business of commodity broking, investment banking, financial services (margin funding) and distribution of third party financial/other products, details in respect of which are available at [www.plindia.com](http://www.plindia.com)

This document has been prepared by the Research Division of PL and is meant for use by the recipient only as information and is not for circulation. This document is not to be reported or copied or made available to others without prior permission of PL. It should not be considered or taken as an offer to sell or a solicitation to buy or sell any security.

The information contained in this report has been obtained from sources that are considered to be reliable. However, PL has not independently verified the accuracy or completeness of the same. Neither PL nor any of its affiliates, its directors or its employees accepts any responsibility of whatsoever nature for the information, statements and opinion given, made available or expressed herein or for any omission therein.

Recipients of this report should be aware that past performance is not necessarily a guide to future performance and value of investments can go down as well. The suitability or otherwise of any investments will depend upon the recipient's particular circumstances and, in case of doubt, advice should be sought from an independent expert/advisor.

Either PL or its affiliates or its directors or its employees or its representatives or its clients or their relatives may have position(s), make market, act as principal or engage in transactions of securities of companies referred to in this report and they may have used the research material prior to publication.

PL may from time to time solicit or perform investment banking or other services for any company mentioned in this document.

PL is registered as Research Analyst under Securities and Exchange Board of India (Research Analysts) Regulations, 2014 PL submits that no material disciplinary action has been taken on us by any Regulatory Authority impacting Equity Research Analysis activities.

PL or its research analysts or its associates or his relatives do not have any financial interest in the subject company.

PL or its research analysts or its associates or his relatives do not have actual/beneficial ownership of one per cent or more securities of the subject company at the end of the month immediately preceding the date of publication of the research report.

PL or its research analysts or its associates or his relatives do not have any material conflict of interest at the time of publication of the research report.

PL or its associates might have received compensation from the subject company in the past twelve months.

PL or its associates might have managed or co-managed public offering of securities for the subject company in the past twelve months or mandated by the subject company for any other assignment in the past twelve months.

PL or its associates might have received any compensation for investment banking or merchant banking or brokerage services from the subject company in the past twelve months.

PL or its associates might have received any compensation for products or services other than investment banking or merchant banking or brokerage services from the subject company in the past twelve months PL or its associates might have received any compensation or other benefits from the subject company or third party in connection with the research report.

PL encourages independence in research report preparation and strives to minimize conflict in preparation of research report. PL or its analysts did not receive any compensation or other benefits from the subject Company or third party in connection with the preparation of the research report. PL or its Research Analysts do not have any material conflict of interest at the time of publication of this report.

It is confirmed that Mrs.Vaishali Parekh B.com, Research Analyst of this report has not received any compensation from the companies mentioned in the report in the preceding twelve months compensation of our Research Analysts is not based on any specific merchant banking, investment banking or brokerage service transactions.

The Research analysts for this report certifies that all of the views expressed in this report accurately reflect his or her personal views about the subject company or companies and its or their securities, and no part of his or her compensation was, is or will be, directly or indirectly related to specific recommendations or views expressed in this report.

The research analysts for this report has not served as an officer, director or employee of the subject company PL or its research analysts have not engaged in market making activity for the subject company

Our sales people, traders, and other professionals or affiliates may provide oral or written market commentary or trading strategies to our clients that reflect opinions that are contrary to the opinions expressed herein, and our proprietary trading and investing businesses may make investment decisions that are inconsistent with the recommendations expressed herein. In reviewing these materials, you should be aware that any or all of the foregoing, among other things, may give rise to real or potential conflicts of interest.

PL and its associates, their directors and employees may (a) from time to time, have a long or short position in, and buy or sell the securities of the subject company or (b) be engaged in any other transaction involving such securities and earn brokerage or other compensation or act as a market maker in the financial instruments of the subject company or act as an advisor or lender/borrower to the subject company or may have any other potential conflict of interests with respect to any recommendation and other related information and opinions.