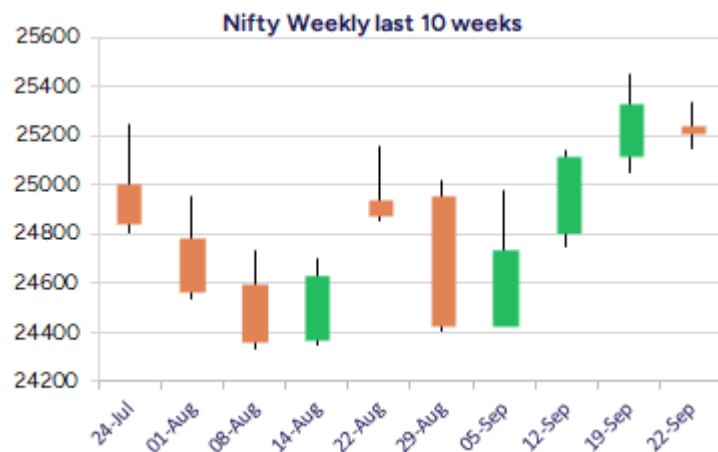
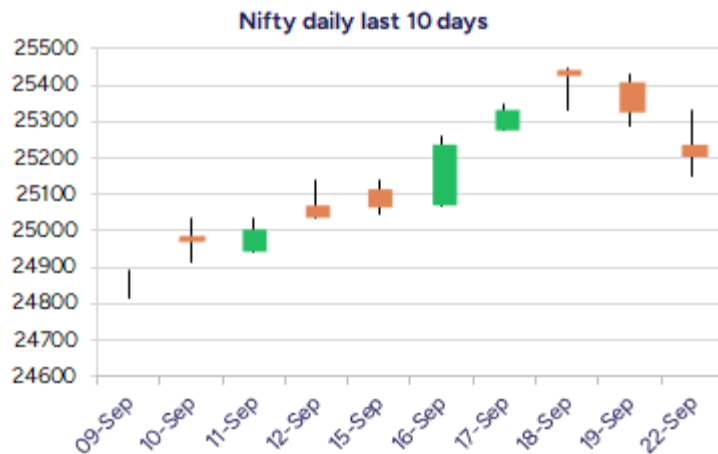


\* Sensex 82159.97 - 466.26

\* Nifty 25202.35 - 124.70

\* Bank Nifty 55284.75 - 174.10



\*Blue candle → Close rate > Open rate \* Red candle → Close rate < Open rate

## Market Preview

### Nifty extends losses; ends near 25200 zone

Nifty ended on the losing side for the second consecutive session to end near the 25200 zone with bias and sentiment slightly shaken. BankNifty witnessed heavy profit booking post the lunch session ending near the 55300 zone weakening the bias to some extent. The market breadth was weak with the advance decline indicating a ratio of 3:5 at close.

## Market Forecast

### Nifty daily range 25100 - 25400

Nifty, witnessed another day of profit booking post the lunch session which ended near the 25200 zone with bias slightly weakened and with near-term support positioned near the 25150 level, would need a revival to maintain the bias intact. With the overall bias still maintained positive, we have the major support near the 50EMA level at 24900 zone while on the upside a decisive breach above the 25500 level is necessary to establish conviction and continue with the positive uptrend in the coming days having 25700 level as the next immediate target.

BankNifty, slipped for the second consecutive session forming the lower top pattern on the daily chart almost to retest the important 50EMA zone with bias slightly shaken and would need to hold the 55000 zone to sustain the positive bias intact. As mentioned earlier, the index would need a decisive breach above 56000 zone which shall trigger for fresh upward move in the coming days to retest the previous peak zone of 57628 levels having the 54800-55000 band as the important support from current level.

The support for the day is seen at 25100 levels, while the resistance is seen at 25400 levels. BankNifty would have the daily range of 54800-55800 levels.

Indices	Period	Closing	% Chng	Trend	Reversal	2 Sup	1 Sup	Pivot	1 Res	2 Res
Nifty	Daily	25202.35	-0.49%	-1	25373.60	25048	25125	25228	25306	25409
	Weekly	25327.05	0.85%	3	24911.20	24876	25101	25275	25501	25675
	Monthly	24426.85	-1.38%	-1	24777.20	23826	24126	24639	24939	25452
Bank Nifty	Daily	55284.75	-0.31%	-1	55373.50	54938	55111	55389	55562	55840
	Weekly	55458.85	1.19%	1	54890.40	54301	54880	55358	55937	56414
	Monthly	53655.65	-4.12%	-1	56293.50	51929	52792	54474	55337	57019
Sensex	Daily	82159.97	-0.56%	-1	82804.15	81661	81910	82247	82496	82833
	Weekly	82626.23	0.88%	2	81265.20	81109	81868	82505	83263	83900
	Monthly	79809.65	-1.69%	-2	81431.75	78110	78960	80593	81443	83075

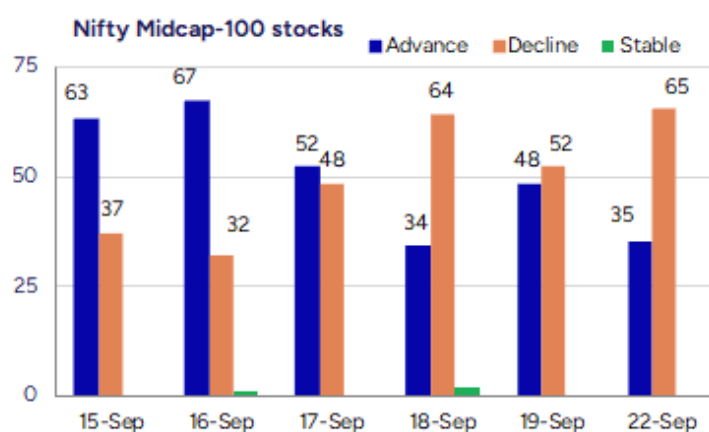
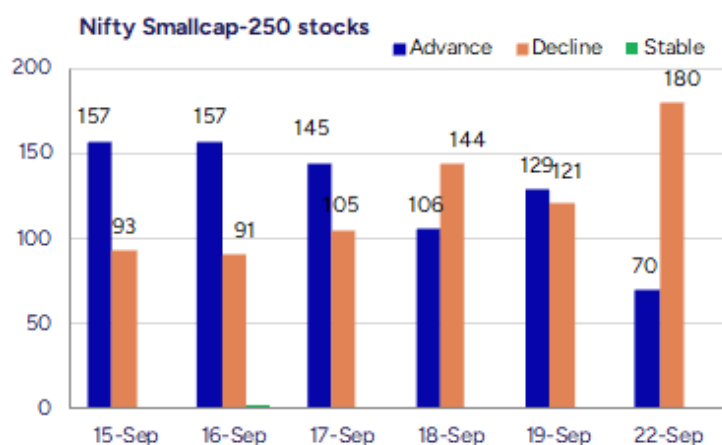
**Gainers - Losers ( Nifty 500 Stocks )**

**Gainers**

Company Name	Last Price	% Gain	Volume
Emkay Global	315.57	20	780718
Adani Power	170.25	20	134128952
Pentagon Rubber	67.9	19.96	141000
STL Global	17.98	19.95	285222
Apex Ecotech	165.45	19.89	515200
Kataria Ind	118.35	19.61	149400
Adani Total Gas	768.45	17.96	26332858

**Losers**

Company Name	Last Price	% Loss	Volume
Paramatrix Tech	83	-10.75	4800
Zeal Global	103.05	-9.92	82800
InfoBeans Tech	515	-9.28	140238
Crizac	316.7	-7.91	2138525
Tiger Logistics	46.52	-7.84	381451
Sattva Engineer	104.5	-7.44	180800
Aro Granite	39	-7.14	333321



### Nifty Daily chart with RSI indicator



### BankNifty Daily chart with RSI indicator



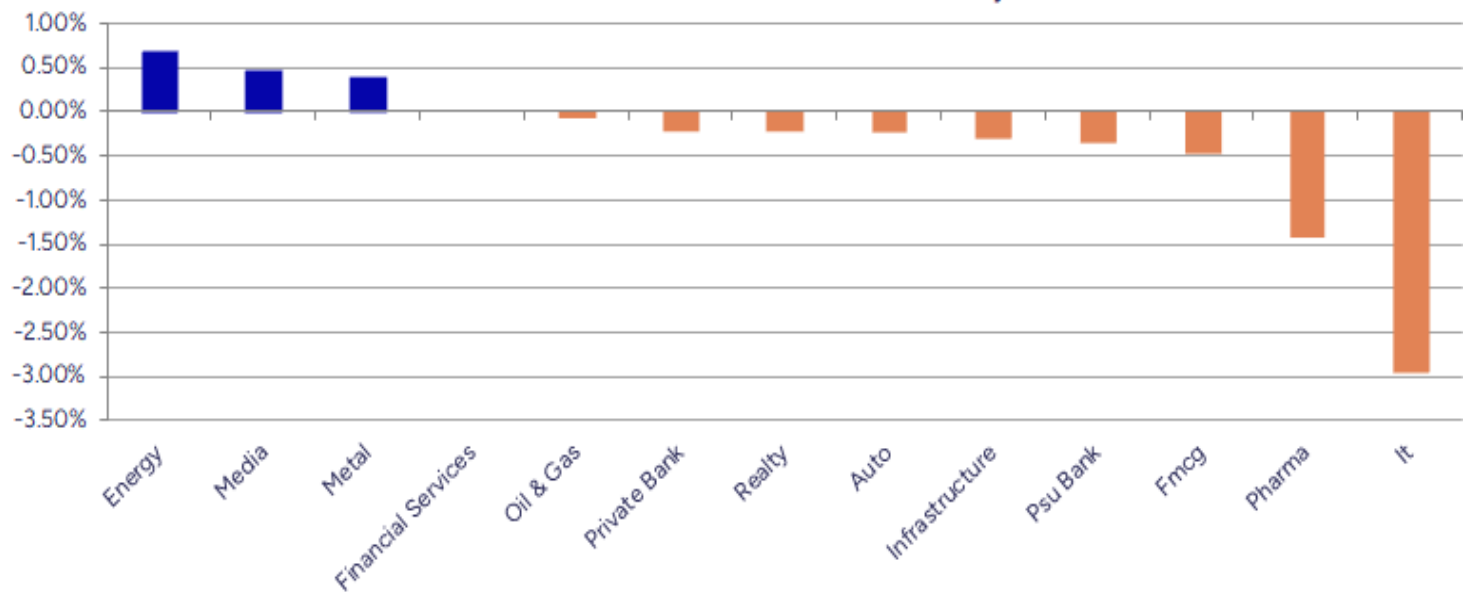
Breakouts - Cross above 200 DMA			
Company Name	LCP	Change %	200 DMA
ARHAM	110.9	10.23	100.61
STC India	140.32	4.39	134.42
AWL Agri	276.4	2.59	269.41
Dredging Corp	700.85	2.46	683.99
Jakharia Fabric	129.65	2.02	127.08
Sadhav Shipping	117	1.96	114.75
DB Realty	180.37	1.81	177.16
AKI India	10.23	1.79	10.05
Archies	20.9	1.65	20.56
Butterfly	711	1.56	700.08
DC Infotech	291.31	1.44	287.17
SMS Lifescience	1226.5	1.42	1209.3
Goyal Salt	177	1.10	175.07
Seamec	959.2	0.98	949.89
BCL Industries	43.2	0.89	42.82
Alkali Metals	96.5	0.66	95.87
Aeroflex Ind.	192.59	0.63	191.38
Alicon Castallo	872	0.59	866.9

\* Stocks crossing above its Simple Moving Average (200DMA)

Breakdown - Cross below 200 DMA			
Company Name	LCP	Change %	200 DMA
Pil Italica	14.3	-2.99	14.74
Ipca Labs	1399.2	-2.86	1440.36
Sameera Agro	17	-2.75	17.48
Alivus Life	1008.5	-2.54	1034.83
Mahanagar Gas	1305.9	-2.46	1338.81
BL Kashyap	65.03	-2.17	66.47
Aro Granite	39	-2.16	39.86
PC Jeweller	13.71	-2.00	13.99
IIFL Capital	278.85	-1.99	284.52
Premier Energie	1027.95	-1.96	1048.49
Alok Industries	18.4	-1.87	18.75
Mcleod	36.55	-1.83	37.23
Sigachi Ind	42.51	-1.71	43.25
Indo Count	290.99	-1.71	296.06
Voltas	1378.5	-1.62	1401.2
Antony Waste	580	-1.61	589.48
Damodar Ind	36	-1.53	36.56
Ambika Cotton	1476	-1.47	1498.09

\* Stocks crossing below its Simple Moving Average (200DMA)

Sectoral Indices - Gainers Losers for the day



Stocks witnessing a volume surge as compared to their 5 day average volume

Watch out for the stocks that have seen a huge spurt in its share price over the last three days

Volume Shockers - NSE					
Company name	LCP	% Chg	Volume	Avg Vol *	% Chg
A G Universal	69	<b>2.99</b>	6400	1025	72000
Adani Green Ene	1157.1	<b>12.26</b>	480592	5223	25581888
Adani Power	170.25	<b>20</b>	21360447	528	34177206
Adani Total Gas	767.25	<b>17.78</b>	3520737	650	16408204
Adani Trans	951.85	<b>8.52</b>	2340828	458	13055797
Archies	20.9	<b>6.31</b>	33231	421	173056
ARHAM	110.9	<b>13.45</b>	13000	523	81000
Aspinwall	269	<b>-1.36</b>	1333	536	8478
Atal	20.6	<b>4.83</b>	100889	3907	4042692
AWL Agri	276.4	<b>7.57</b>	3046408	441	16482863
BCL Industries	43.2	<b>5.78</b>	428634	903	4297367
BEW Engineering	153.05	<b>-0.75</b>	1125	433	6000
Bigbloc Constru	57.85	<b>1.99</b>	60521	406	306316
Borosil Renew	618	<b>8.41</b>	488488	1506	7847373
C P S Shapers	755	<b>-4.18</b>	2040	709	16500
Chemcon Special	265	<b>15.05</b>	56389	1934	1146731
Cinevista	18.52	<b>-2.01</b>	25400	573	170995
Control Print	813.4	<b>6.55</b>	11411	7299	844219
Cool Caps	102.6	<b>-0.58</b>	8400	20674	1745000
De Neers	179.9	<b>-3.56</b>	5880	17573	1039200

\* the Average Volume of last 5 days

Price Shockers - NSE				
Company name	LCP	Prv Close	% Chg	Volume
Intense Tech	139.05	88.13	<b>57.78</b>	1998115
Adani Power	170.25	126.1	<b>35.01</b>	134177206
Emkay Global	315.57	239.69	<b>31.66</b>	781919
Pentagon Rubber	67.9	52.9	<b>28.36</b>	141000
Adani Total Gas	767.25	607.05	<b>26.39</b>	26408204
Ushanti Colour	49.95	39.95	<b>25.03</b>	4000
Trigyn Tech	93.05	75.15	<b>23.82</b>	1505015
Natural Capsule	231.89	189.27	<b>22.52</b>	286089
Deepak Builders	172.56	141.68	<b>21.8</b>	940213
Panache Digilif	320	265.35	<b>20.6</b>	142041
Sharp Chucks	87.5	72.75	<b>20.27</b>	16000
Shree Pushkar	461	384.25	<b>19.97</b>	6636448
STL Global	17.98	15.04	<b>19.55</b>	293615
Globe Internati	150	127.55	<b>17.6</b>	160500
RNFI Services	390	331.95	<b>17.49</b>	174000
VIP Clothing	40.02	34.09	<b>17.4</b>	847383
Touchwood Enter	118.2	100.83	<b>17.23</b>	281068
Shalby	266.65	227.85	<b>17.03</b>	10875921
Kataria Ind	117	100	<b>17</b>	150000
IZMO	1109.65	958.65	<b>15.75</b>	143448

\* the % price rise of the last 3 days

Nifty 50 stocks - Summary Details											
Symbol	LTP	Chng	% Chng	Volume (lacs)	Turnover (crs.)	52w High	Diff with 52w H	52w Low	Diff with 52w L	365 days % chng	30 days % chng
NIFTY 50	25202.35	-124.70	-0.49%	2544.99	25276.82	26277.35	4.09%	21743.65	15.91%	1.39%	-0.20%
ADANIENT	2624.50	100.50	3.98%	70.23	1836.83	3211.00	18.27%	2025.00	29.60%	0.57%	-18.75%
ADANIPTS	1445.00	17.20	1.20%	54.90	794.98	1494.00	3.28%	995.65	45.13%	3.17%	-1.12%
APOLLOHOSP	7744.00	-62.50	-0.80%	3.03	234.22	7980.00	2.96%	6001.00	29.05%	0.35%	11.58%
ASIANPAINT	2479.90	-1.80	-0.07%	8.73	217.17	3358.00	26.15%	2124.75	16.71%	-3.90%	-24.31%
AXISBANK	1140.10	4.20	0.37%	76.90	879.02	1281.65	11.04%	933.50	22.13%	4.60%	-8.66%
BAJAJ-AUTO	9033.00	61.50	0.69%	5.25	478.62	12774.00	29.29%	7089.35	27.42%	3.18%	-22.86%
BAJAJFINSV	2068.60	1.30	0.06%	6.33	131.33	2135.00	3.11%	1551.65	33.32%	4.92%	9.59%
BAJFINANCE	1006.00	13.55	1.37%	42.50	426.46	1025.70	1.92%	645.10	55.94%	10.44%	-86.94%
BEL	406.40	-2.50	-0.61%	108.82	442.94	436.00	6.79%	240.25	69.16%	7.85%	44.92%
BHARTIARTL	1956.00	-6.40	-0.33%	44.69	874.27	2045.80	4.39%	1511.00	29.45%	1.64%	17.29%
CIPLA	1542.00	-33.80	-2.14%	12.57	195.19	1702.05	9.40%	1335.00	15.51%	1.89%	-4.44%
COALINDIA	394.60	0.10	0.03%	33.99	134.38	517.85	23.80%	349.25	12.98%	2.02%	-19.29%
DRREDDY	1302.10	-19.60	-1.48%	14.00	183.09	1405.90	7.38%	1020.00	27.66%	6.31%	-79.86%
EICHERMOT	6950.50	-23.00	-0.33%	3.33	231.89	7018.00	0.96%	4508.75	54.16%	16.60%	42.76%
GRASIM	2859.90	-18.00	-0.63%	7.51	216.60	2911.00	1.76%	2276.95	25.60%	1.79%	5.73%
HCLTECH	1442.00	-25.40	-1.73%	44.57	640.97	2012.20	28.34%	1302.75	10.69%	1.20%	-14.96%
HDFCBANK	965.40	-1.50	-0.16%	108.54	1048.96	1018.85	5.25%	806.50	19.70%	-50.94%	-42.36%
HDFCLIFE	787.05	4.85	0.62%	19.76	155.94	820.75	4.11%	584.30	34.70%	-1.15%	12.28%
HEROMOTOCO	5416.50	8.50	0.16%	6.72	367.88	6246.25	13.28%	3344.00	61.98%	4.92%	-9.97%
HINDALCO	747.60	4.30	0.58%	22.32	166.81	772.65	3.24%	546.45	36.81%	6.15%	9.47%
HINDUNILVR	2568.50	8.90	0.35%	11.74	302.26	3035.00	15.37%	2136.00	20.25%	-0.69%	-10.05%
ICICIBANK	1402.20	-	#VALUE!	88.48	1241.61	1500.00	6.52%	1186.00	18.23%	-1.02%	10.35%
INDUSINDBK	734.10	-10.30	-1.38%	18.84	139.44	1498.00	50.99%	606.00	21.14%	-6.37%	-50.32%
INFY	1500.90	-39.30	-2.55%	156.55	2347.81	2006.45	25.20%	1307.00	14.84%	6.99%	-18.58%
ITC	407.00	-3.65	-0.89%	89.29	364.33	528.50	22.99%	390.15	4.32%	0.60%	-18.88%
JIOFIN	313.70	-3.30	-1.04%	77.11	243.79	363.00	13.58%	198.65	57.92%	-4.21%	-8.52%
JSWSTEEL	1118.00	-4.80	-0.43%	7.86	88.08	1126.80	0.78%	880.00	27.05%	4.44%	17.18%
KOTAKBANK	2020.10	-10.90	-0.54%	26.46	537.39	2301.90	12.24%	1679.05	20.31%	1.22%	11.68%
LT	3645.90	-29.50	-0.80%	8.39	306.90	3963.50	8.01%	2965.30	22.95%	2.02%	-1.19%
M&M	3585.00	-7.10	-0.20%	16.64	597.75	3723.80	3.73%	2425.00	47.84%	8.59%	29.70%
MARUTI	15779.00	-85.00	-0.54%	3.02	480.68	16060.00	1.75%	10725.00	47.12%	11.00%	29.60%
NESTLEIND	1189.20	-5.30	-0.44%	11.07	131.98	1389.00	14.38%	1055.00	12.72%	4.11%	-53.45%
NTPC	339.10	0.45	0.13%	69.66	236.01	448.45	24.38%	292.80	15.81%	0.57%	-18.64%
ONGC	237.59	0.90	0.38%	99.63	236.09	302.00	21.33%	205.00	15.90%	-0.99%	-18.87%
POWERGRID	286.35	0.15	0.05%	94.57	271.29	366.25	21.82%	247.30	15.79%	0.38%	-13.52%
RELIANCE	1390.90	-16.50	-1.17%	77.57	1086.71	1551.00	10.32%	1114.85	24.76%	-0.36%	-51.66%
SBILIFE	1855.60	13.90	0.75%	10.04	187.29	1927.95	3.75%	1372.55	35.19%	-1.74%	-1.12%
SBIN	854.70	-7.65	-0.89%	65.94	567.66	875.45	2.37%	680.00	25.69%	2.88%	7.77%
SHRIRAMFIN	629.30	-3.90	-0.62%	27.12	171.49	730.45	13.85%	493.35	27.56%	0.09%	-82.46%
SUNPHARMA	1636.50	-19.50	-1.18%	17.85	293.75	1960.35	16.52%	1553.05	5.37%	1.35%	-10.21%
TATACONSUM	1131.00	4.20	0.37%	7.02	79.32	1233.65	8.32%	882.90	28.10%	4.01%	-5.96%
TATAMOTORS	695.30	-12.15	-1.72%	96.87	681.03	1000.40	30.50%	535.75	29.78%	1.56%	-26.07%
TATASTEEL	171.40	-0.08	-0.05%	209.70	359.40	172.90	0.87%	122.62	39.78%	8.04%	14.23%
TCS	3075.50	-93.70	-2.96%	36.35	1120.54	4494.90	31.58%	2991.60	2.80%	5.32%	-26.91%
TECHM	1507.20	-46.60	-3.00%	57.24	855.24	1807.70	16.62%	1209.40	24.62%	3.61%	-3.41%
TITAN	3455.00	-12.20	-0.35%	8.18	282.71	3867.00	10.65%	2925.00	18.12%	-1.59%	-5.75%
TRENT	4992.50	-87.50	-1.72%	8.00	405.30	8345.00	40.17%	4488.00	11.24%	-6.40%	-29.88%
ULTRACEMCO	12645.00	137.00	1.10%	5.00	631.48	13097.00	3.45%	10047.85	25.85%	-1.84%	8.56%
WIPRO	250.49	-5.39	-2.11%	157.84	394.86	324.60	22.83%	228.00	9.86%	4.04%	-52.26%
ETERNAL	341.95	5.40	1.60%	286.26	977.06	343.90	0.57%	194.80	75.54%	5.10%	#VALUE!

## Disclaimer / Disclosures

### ANALYST CERTIFICATION

I, Mrs. Vaishali Parekh B.com, Research Analyst, author and the name subscribed to this report, hereby certify that all of the views expressed in this research report accurately reflect our views about the subject issuer(s) or securities. We also certify that no part of our compensation was, is, or will be directly or indirectly related to the specific recommendation(s) or view(s) in this report.

Terms & conditions and other disclosures:

Prabhudas Lilladher Pvt. Ltd, Mumbai, India (hereinafter referred to as "PL") is engaged in the business of Stock Broking, Portfolio Manager, Depository Participant and distribution for third party financial products. PL is a subsidiary of Prabhudas Lilladher Advisory Services Pvt Ltd. which has its various subsidiaries engaged in business of commodity broking, investment banking, financial services (margin funding) and distribution of third party financial/other products, details in respect of which are available at [www.plindia.com](http://www.plindia.com)

This document has been prepared by the Research Division of PL and is meant for use by the recipient only as information and is not for circulation. This document is not to be reported or copied or made available to others without prior permission of PL. It should not be considered or taken as an offer to sell or a solicitation to buy or sell any security.

The information contained in this report has been obtained from sources that are considered to be reliable. However, PL has not independently verified the accuracy or completeness of the same. Neither PL nor any of its affiliates, its directors or its employees accepts any responsibility of whatsoever nature for the information, statements and opinion given, made available or expressed herein or for any omission therein.

Recipients of this report should be aware that past performance is not necessarily a guide to future performance and value of investments can go down as well. The suitability or otherwise of any investments will depend upon the recipient's particular circumstances and, in case of doubt, advice should be sought from an independent expert/advisor.

Either PL or its affiliates or its directors or its employees or its representatives or its clients or their relatives may have position(s), make market, act as principal or engage in transactions of securities of companies referred to in this report and they may have used the research material prior to publication.

PL may from time to time solicit or perform investment banking or other services for any company mentioned in this document.

PL is registered as Research Analyst under Securities and Exchange Board of India (Research Analysts) Regulations, 2014 PL submits that no material disciplinary action has been taken on us by any Regulatory Authority impacting Equity Research Analysis activities.

PL or its research analysts or its associates or his relatives do not have any financial interest in the subject company.

PL or its research analysts or its associates or his relatives do not have actual/beneficial ownership of one per cent or more securities of the subject company at the end of the month immediately preceding the date of publication of the research report.

PL or its research analysts or its associates or his relatives do not have any material conflict of interest at the time of publication of the research report.

PL or its associates might have received compensation from the subject company in the past twelve months.

PL or its associates might have managed or co-managed public offering of securities for the subject company in the past twelve months or mandated by the subject company for any other assignment in the past twelve months.

PL or its associates might have received any compensation for investment banking or merchant banking or brokerage services from the subject company in the past twelve months.

PL or its associates might have received any compensation for products or services other than investment banking or merchant banking or brokerage services from the subject company in the past twelve months PL or its associates might have received any compensation or other benefits from the subject company or third party in connection with the research report.

PL encourages independence in research report preparation and strives to minimize conflict in preparation of research report. PL or its analysts did not receive any compensation or other benefits from the subject Company or third party in connection with the preparation of the research report. PL or its Research Analysts do not have any material conflict of interest at the time of publication of this report.

It is confirmed that Mrs.Vaishali Parekh B.com, Research Analyst of this report has not received any compensation from the companies mentioned in the report in the preceding twelve months compensation of our Research Analysts is not based on any specific merchant banking, investment banking or brokerage service transactions.

The Research analysts for this report certifies that all of the views expressed in this report accurately reflect his or her personal views about the subject company or companies and its or their securities, and no part of his or her compensation was, is or will be, directly or indirectly related to specific recommendations or views expressed in this report.

The research analysts for this report has not served as an officer, director or employee of the subject company PL or its research analysts have not engaged in market making activity for the subject company

Our sales people, traders, and other professionals or affiliates may provide oral or written market commentary or trading strategies to our clients that reflect opinions that are contrary to the opinions expressed herein, and our proprietary trading and investing businesses may make investment decisions that are inconsistent with the recommendations expressed herein. In reviewing these materials, you should be aware that any or all of the foregoing, among other things, may give rise to real or potential conflicts of interest.

PL and its associates, their directors and employees may (a) from time to time, have a long or short position in, and buy or sell the securities of the subject company or (b) be engaged in any other transaction involving such securities and earn brokerage or other compensation or act as a market maker in the financial instruments of the subject company or act as an advisor or lender/borrower to the subject company or may have any other potential conflict of interests with respect to any recommendation and other related information and opinions.