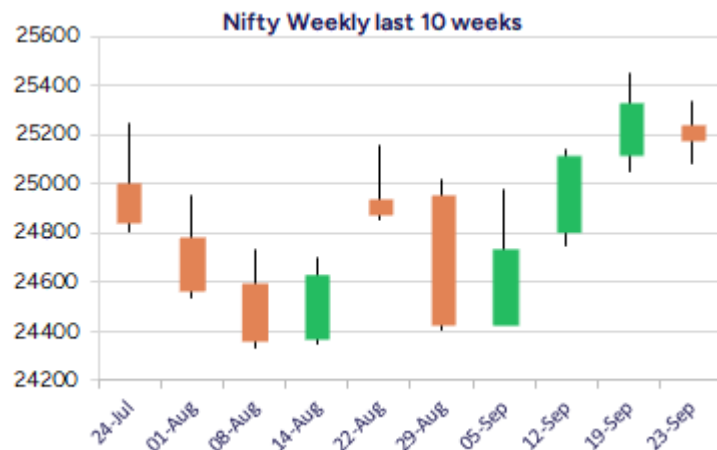
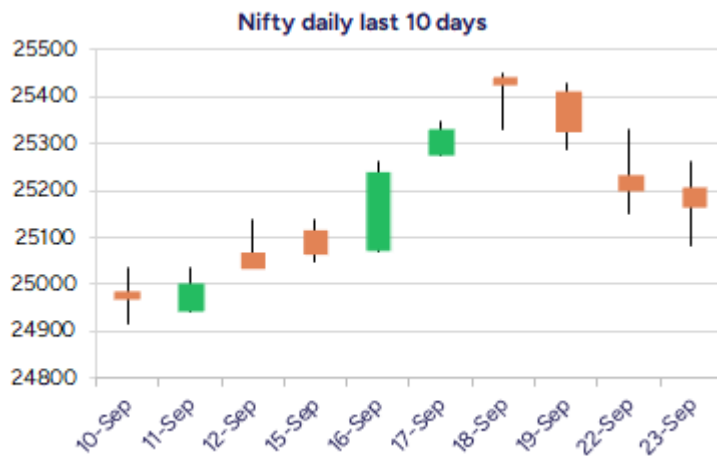


* Sensex 82102.10 - 57.87

* Nifty 25169.50 - 32.85

* Bank Nifty 55509.75 + 225.00



*Blue candle → Close rate > Open rate * Red candle → Close rate < Open rate

Market Preview

Nifty slips further amid volatility

Nifty witnessed high fluctuations during the intraday session to end marginally in the red with bias turning slightly weak having the 50EMA zone at 24900 level as the important support. BankNifty witnessed a small pullback from the important 50EMA zone at 55200 level to end near the 55500 zone with bias slightly improved anticipating for further rise. The market breadth was weak once again with the advance decline indicating a ratio of 2:3 at close.

Market Forecast

Nifty daily range 25000 - 25400

Nifty, witnessed a volatile session resisting near the 25250 level and taking support near the 25100 zone during the intraday session, closing marginally on the losing side overall witnessing a gradual slide from 25450 level with bias slightly turning weak. As mentioned earlier, the index would have the major support near the 50EMA level at 24900 zone which needs to be sustained to maintain the overall trend intact while on the upside only a decisive breach above the 25500 level would bring conviction to continue with the positive uptrend in the coming days.

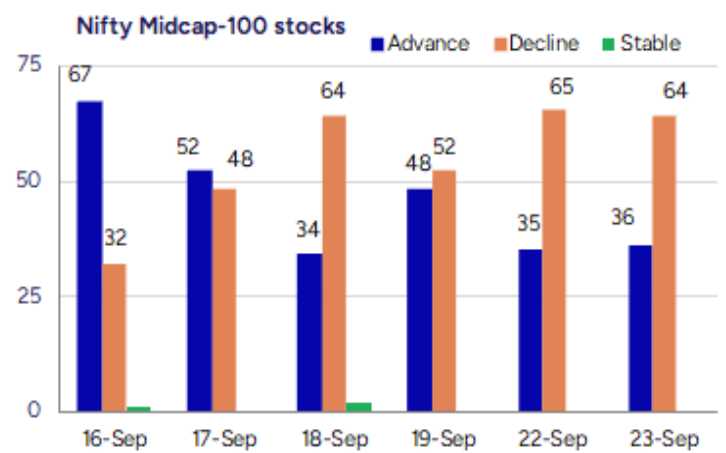
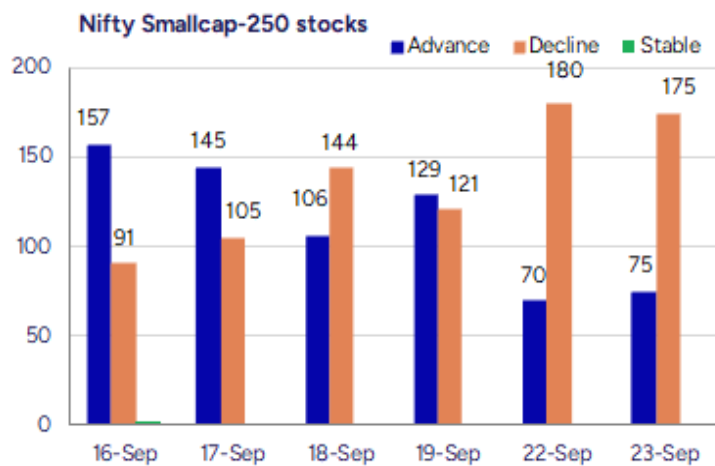
BankNifty, on the other hand witnessed a pullback from the important 50EMA zone at 55200 level to end the session near 55500 zone to form a higher bottom pattern on the daily chart anticipating for further follow through of the positive move in the coming sessions. With an Inverted head and shoulder pattern in process on the daily chart, a decisive move above the neckline zone of 55900 level shall trigger for fresh upward move in the coming days provided the 55000 zone is sustained to maintain the overall bias intact.

The support for the day is seen at 25000 levels, while the resistance is seen at 25400 levels. BankNifty would have the daily range of 55200-56000 levels.

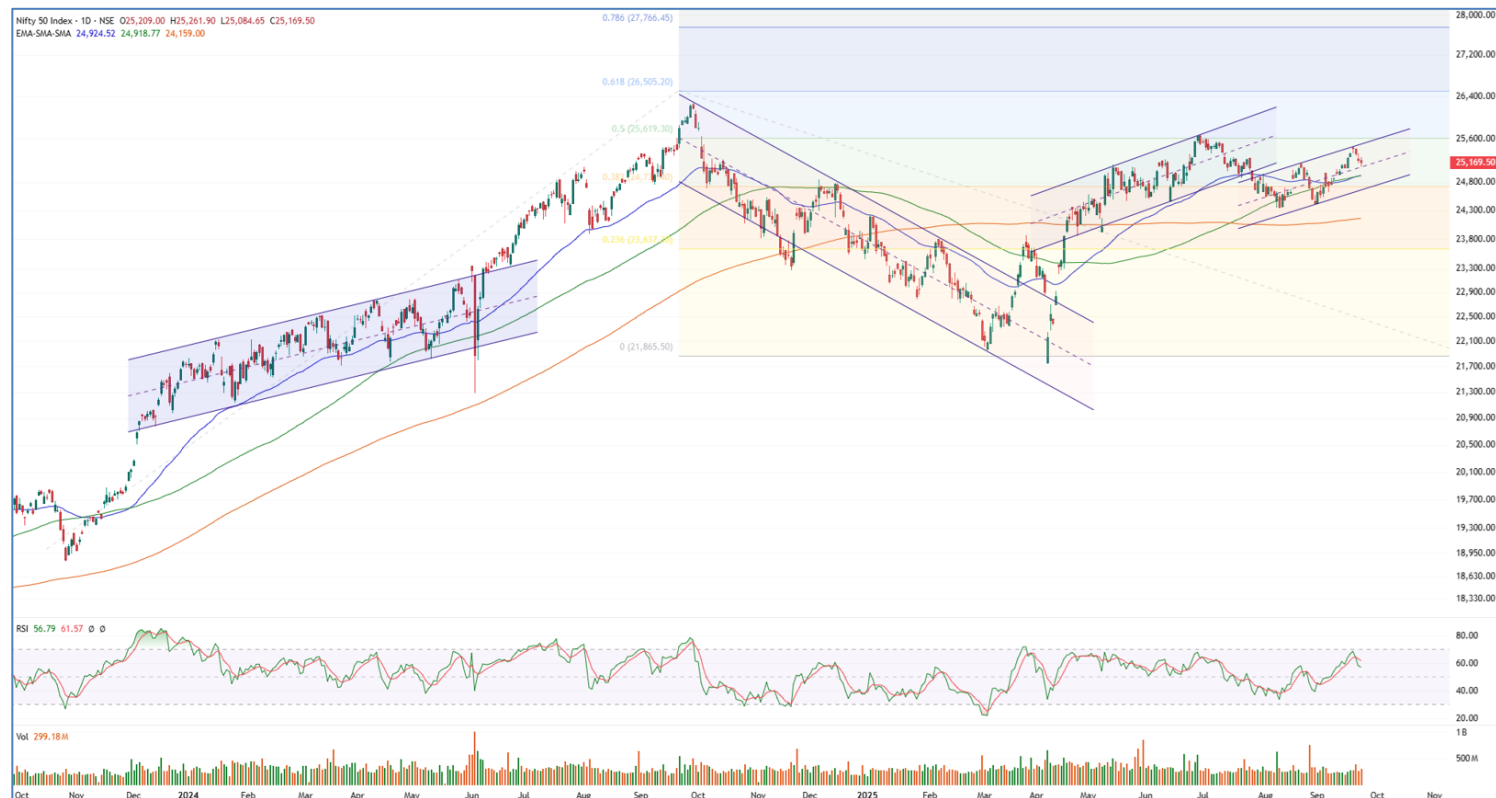
Indices	Period	Closing	% Chng	Trend	Reversal	2 Sup	1 Sup	Pivot	1 Res	2 Res
Nifty	Daily	25169.50	-0.13%	-1	25373.60	24995	25082	25172	25259	25349
	Weekly	25327.05	0.85%	3	24911.20	24876	25101	25275	25501	25675
	Monthly	24426.85	-1.38%	-1	24777.20	23826	24126	24639	24939	25452
Bank Nifty	Daily	55509.75	0.41%	-1	55373.50	54941	55225	55444	55728	55947
	Weekly	55458.85	1.19%	1	54890.40	54301	54880	55358	55937	56414
	Monthly	53655.65	-4.12%	-1	56293.50	51929	52792	54474	55337	57019
Sensex	Daily	82102.10	-0.07%	-2	82720.05	81489	81796	82083	82389	82677
	Weekly	82626.23	0.88%	2	81265.20	81109	81868	82505	83263	83900
	Monthly	79809.65	-1.69%	-2	81431.75	78110	78960	80593	81443	83075

Gainers - Losers (Nifty 500 Stocks)

Gainers				Losers			
Company Name	Last Price	% Gain	Volume	Company Name	Last Price	% Loss	Volume
DRS Cargo Mover	30	20	800	Indian Emulsifi	157.3	-15.41	252000
Brand Concepts	379.3	19.99	308079	Ushanti Colour	44.15	-11.61	4000
Emkay Global	371	17.57	2970371	Sunrest	44	-8.71	89600
Zeal Global	120.9	17.04	75000	Auro Impex	45.85	-8.02	1600
The Grob Tea	1205	16.97	4469	Shanthala	36.05	-7.68	22800
Banaras Beads	123.36	16.7	111341	Italian Edibles	33.3	-7.37	8000
Refex Ind	390.35	15.47	17505467	Positron Energy	332	-6.9	26100



Nifty Daily chart with RSI indicator



BankNifty Daily chart with RSI indicator



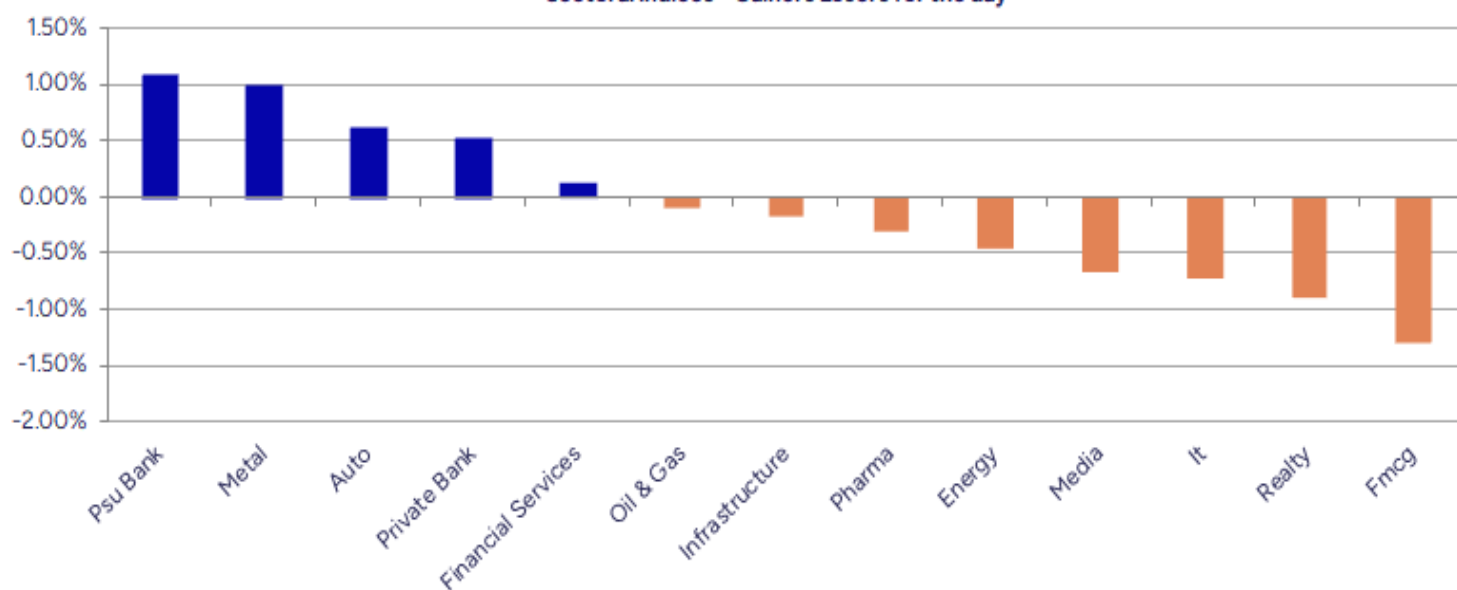
Breakouts - Cross above 200 DMA			
Company Name	LCP	Change %	200 DMA
The Grob Tea	1205	15.63	1042.14
BF Utilities	857.65	9.12	785.99
Zuari Ind.	313.4	8.58	288.63
Karma Energy	64.37	6.34	60.53
IIFL Capital	302.15	6.30	284.23
Borosil	373.6	5.21	355.09
Nahar Ent	126.1	4.66	120.49
Pentagon Rubber	71.95	4.64	68.76
Auto Stampings	562.2	4.31	538.98
TCI Express	763.35	4.28	732.03
RKEC Projects	79.79	3.03	77.44
Brand Concepts	379.3	3.01	368.22
Purv Flexipack	116	2.80	112.84
AB Cotspin	456.5	2.48	445.47
D.K. Enterprise	74.9	2.20	73.29
Everest Kanto	146.31	2.18	143.19
McLeod	37.92	1.94	37.2
Remsons Ind	133.14	1.81	130.77

* Stocks crossing above its Simple Moving Average (200DMA)

Breakdown - Cross below 200 DMA			
Company Name	LCP	Change %	200 DMA
Indian Emulsifi	157.3	-4.60	164.88
AWL Agri	261.05	-3.03	269.2
Ceigall India	272.79	-1.66	277.4
PCBL Chemical	395.2	-1.66	401.87
Suzlon Energy	58.91	-1.65	59.9
Magson Retail	110	-1.57	111.75
COFORGE LTD.	1667.9	-1.53	1693.77
STC India	132.71	-1.20	134.32
Zee Entertain	118.14	-1.05	119.39
Pudumjee Paper	126.66	-1.01	127.95
Sarla Performan	99.81	-0.97	100.79
SMS Lifescience	1198.4	-0.93	1209.67
DCB Bank	125.78	-0.88	126.9
Kaveri Seed	1141.5	-0.82	1150.88
BCL Industries	42.45	-0.70	42.75
WOL 3D India	135	-0.59	135.8
Shanthala	36.05	-0.55	36.25
Kansai Nerolac	246.21	-0.49	247.41

* Stocks crossing below its Simple Moving Average (200DMA)

Sectoral Indices - Gainers Losers for the day



Stocks witnessing a volume surge as compared to their 5 day average volur

Watch out for the stocks that have seen a huge spurt in its share price over the last three days

Volume Shockers - NSE					
Company name	LCP	% Chg	Volume	Avg Vol *	% Chg
BF Investment	472.6	0.92	2063390	14847	13798
BF Utilities	857.65	10.23	5261215	56984	9133
Auto Stampings	562.2	14.2	1246941	14191	8687
Refex Ind	390.35	15.47	17505467	204737	8450
KEC Intl	899	3.79	15221978	357011	4164
Zuari Ind.	313.4	9.37	3397831	84015	3944
Sunrest	44	-8.71	89600	2240	3900
Cool Caps	95.55	-5.95	325000	8400	3769
IRM Energy	376.95	8.74	7572834	197190	3740
STL Global	18.11	1.4	2213006	70215	3052
Ishan Dyes	62.2	3.2	126035	4349	2798
De Neers	192.15	6.57	166800	5880	2737
Adani Green Ene	1135.55	-1.44	12803319	480592	2564
Guj Raffia Ind	38.13	-2.21	48668	1938	2412
Netweb	3554	0.53	3543803	163390	2069
AB Cotspin	456.5	7.41	58000	2700	2048
Banaras Beads	123.36	16.7	111341	6569	1595
Mahamaya Steel	402.5	3.44	83474	5230	1496
RKEC Projects	79.79	15.25	589245	38128	1445
Univastu India	246.9	-0.28	174381	11882	1368

* the Average Volume of last 5 days

Price Shockers - NSE				
Company name	LCP	Prv Close	% Chg	Volume
Emkay Global	371	262.98	41.08	2970371
Pentagon Rubber	71.95	56.6	27.12	338000
Brand Concepts	379.3	305.1	24.32	308079
Karma Energy	64.37	53.2	21	37440
STL Global	18.11	14.99	20.81	2213006
P S Raj Steels	222.75	186.75	19.28	56000
Shree Pushkar	454.75	384.2	18.36	2412056
Medico Remedies	45.6	38.7	17.83	872769
Panache Digillif	349.11	297.24	17.45	195169
OM Infra	128.77	110.29	16.76	2905052
The Grob Tea	1205	1037.2	16.18	4469
Banaras Beads	123.36	106.2	16.16	111341
Kataria Ind	114	98.95	15.21	42000
Adani Power	163.15	141.88	14.99	166322906
Adani Total Gas	747.85	651.45	14.8	11160831
Lokesh Machines	204.03	178.6	14.24	205362
Subros	1147.5	1004.7	14.21	3150443
HP Telecom Ind	229.8	202	13.76	32400
Auto Stampings	562.2	498.9	12.69	1246941
Bajaj Health	477.2	423.65	12.64	1528912

* the % price rise of the last 3 days

Nifty 50 stocks - Summary Details											
Symbol	LTP	Chng	% Chng	Volume (lacs)	Turnover (crs.)	52w High	Diff with 52w H	52w Low	Diff with 52w L	365 days % chng	30 days % chng
NIFTY 50	25169.50	-32.85	-0.13%	2991.91	31434.02	26277.35	4.22%	21743.65	15.76%	1.34%	-2.28%
ADANIEN	2666.00	36.50	1.39%	56.10	1495.50	3211.00	16.97%	2025.00	31.65%	13.10%	-12.60%
ADANIPTS	1438.80	-5.40	-0.37%	25.50	367.54	1494.00	3.69%	995.65	44.51%	7.68%	0.38%
APOLLOHOSP	7685.00	-54.00	-0.70%	4.43	340.54	7980.00	3.70%	6001.00	28.06%	-2.32%	9.27%
ASIANPAINT	2450.00	-32.70	-1.32%	13.32	326.34	3358.00	27.04%	2124.75	15.31%	-0.87%	-24.92%
AXISBANK	1170.00	25.60	2.24%	160.79	1865.86	1281.65	8.71%	933.50	25.33%	6.86%	-8.08%
BAJAJ-AUTO	8968.00	-86.50	-0.96%	4.51	409.59	12774.00	29.79%	7089.35	26.50%	4.32%	-24.18%
BAJAJFINSV	2084.00	14.50	0.70%	11.77	245.25	2135.00	2.39%	1551.65	34.31%	5.27%	7.97%
BAJFINANCE	1025.90	19.40	1.93%	102.29	1045.48	1028.80	0.28%	645.10	59.03%	12.52%	-86.73%
BEL	404.45	-1.95	-0.48%	119.06	481.46	436.00	7.24%	240.25	68.35%	8.42%	46.53%
BHARTIARTL	1939.50	-16.70	-0.85%	43.49	844.09	2045.80	5.20%	1511.00	28.36%	1.18%	14.28%
CIPLA	1530.00	-12.20	-0.79%	14.87	227.15	1702.05	10.11%	1335.00	14.61%	-3.18%	-5.89%
COALINDIA	394.00	-0.70	-0.18%	47.20	186.00	517.85	23.92%	349.25	12.81%	5.41%	-19.60%
DRREDDY	1305.30	3.90	0.30%	12.71	166.18	1405.90	7.16%	1020.00	27.97%	1.86%	-80.13%
EICHERMOT	6982.50	36.50	0.53%	6.79	477.88	7122.50	1.97%	4508.75	54.87%	17.24%	39.95%
GRASIM	2813.60	-40.50	-1.42%	7.03	198.42	2911.00	3.35%	2276.95	23.57%	1.43%	6.57%
HCLTECH	1431.40	-8.50	-0.59%	31.06	444.02	2012.20	28.86%	1302.75	9.88%	-1.80%	-18.19%
HDFCBANK	958.45	-5.75	-0.60%	210.22	2018.28	1018.85	5.93%	806.50	18.84%	-50.92%	-44.62%
HDFCLIFE	775.90	-11.90	-1.51%	22.21	172.59	820.75	5.46%	584.30	32.79%	-0.12%	10.79%
HEROMOTOCO	5365.00	-64.50	-1.19%	5.07	274.77	6246.25	14.11%	3344.00	60.44%	8.64%	-9.71%
HINDALCO	745.60	-0.10	-0.01%	37.84	282.08	772.65	3.50%	546.45	36.44%	5.89%	7.39%
HINDUNILVR	2524.90	-47.30	-1.84%	14.30	362.35	3035.00	16.81%	2136.00	18.21%	-2.19%	-13.61%
ICICIBANK	1396.10	-5.40	-0.39%	128.28	1791.67	1500.00	6.93%	1186.00	17.72%	-2.43%	4.71%
INDUSINDBK	755.00	20.70	2.82%	45.02	336.47	1490.85	49.36%	606.00	24.59%	-3.39%	-50.39%
INFY	1500.60	1.10	0.07%	98.32	1475.39	2006.45	25.21%	1307.00	14.81%	0.81%	-21.32%
ITC	404.00	-2.95	-0.72%	149.36	602.93	528.50	23.56%	390.15	3.55%	2.17%	-20.89%
JIOFIN	313.05	-0.80	-0.25%	118.96	371.49	363.00	13.76%	198.65	57.59%	-2.11%	-11.32%
JSWSTEEL	1137.90	20.90	1.87%	20.75	235.82	1148.00	0.88%	880.00	29.31%	5.92%	13.80%
KOTAKBANK	2052.00	30.30	1.50%	50.86	1034.73	2301.90	10.86%	1679.05	22.21%	1.77%	6.15%
LT	3660.00	15.50	0.43%	12.62	460.64	3963.50	7.66%	2965.30	23.43%	1.35%	-3.94%
M&M	3610.00	25.20	0.70%	25.23	915.19	3723.80	3.06%	2425.00	48.87%	5.34%	21.48%
MARUTI	16083.00	267.00	1.69%	8.73	1409.98	16325.00	1.48%	10725.00	49.96%	10.22%	25.38%
NESTLEIND	1167.90	-20.40	-1.72%	21.13	247.36	1389.00	15.92%	1055.00	10.70%	2.18%	-55.98%
NTPC	343.05	3.85	1.14%	107.38	367.44	448.45	23.50%	292.80	17.16%	0.65%	-19.99%
ONGC	236.89	-0.58	-0.24%	70.13	165.72	302.00	21.56%	205.00	15.56%	0.50%	-17.04%
POWERGRID	288.55	1.90	0.66%	136.19	392.19	366.25	21.22%	247.30	16.68%	1.16%	-15.90%
RELIANCE	1390.50	-0.10	-0.01%	140.15	1944.60	1551.00	10.35%	1114.85	24.73%	-1.32%	-53.21%
SBILIFE	1820.30	-37.40	-2.01%	7.37	135.11	1927.95	5.58%	1372.55	32.62%	-0.07%	-0.67%
SBIN	869.60	14.35	1.68%	143.58	1244.29	875.45	0.67%	680.00	27.88%	4.78%	9.41%
SHRIRAMFIN	628.30	0.45	0.07%	35.86	226.08	730.45	13.98%	493.35	27.35%	1.95%	-82.22%
SUNPHARMA	1632.80	-11.20	-0.68%	19.68	321.47	1960.35	16.71%	1553.05	5.14%	0.13%	-11.89%
TATACONSUM	1128.40	-1.70	-0.15%	10.83	122.05	1233.65	8.53%	882.90	27.81%	4.24%	-7.13%
TATAMOTORS	702.20	5.95	0.85%	119.03	835.00	1000.40	29.81%	535.75	31.07%	2.34%	-28.28%
TATASTEEL	173.21	1.82	1.06%	245.33	423.85	173.81	0.35%	122.62	41.26%	8.10%	12.74%
TCS	3065.00	-8.80	-0.29%	31.78	973.60	4494.90	31.81%	2991.60	2.45%	0.65%	-28.26%
TECHM	1472.90	-32.50	-2.16%	13.80	204.52	1807.70	18.52%	1209.40	21.79%	0.03%	-7.19%
TITAN	3439.30	-18.20	-0.53%	11.45	393.02	3867.00	11.06%	2925.00	17.58%	-4.52%	-8.95%
TRENT	4905.00	-105.50	-2.11%	27.34	1340.94	8345.00	41.22%	4488.00	9.29%	-7.52%	-32.88%
ULTRACEMCO	12470.00	-180.00	-1.42%	4.04	501.46	13097.00	4.79%	10047.85	24.11%	0.48%	7.22%
WIPRO	249.40	-0.93	-0.37%	86.73	216.97	324.60	23.17%	228.00	9.39%	0.68%	-53.57%
ETERNAL	338.80	-3.05	-0.89%	151.43	512.66	343.90	1.48%	194.80	73.92%	7.13%	#VALUE!

Disclaimer / Disclosures

ANALYST CERTIFICATION

I, Mrs. Vaishali Parekh B.com, Research Analyst, author and the name subscribed to this report, hereby certify that all of the views expressed in this research report accurately reflect our views about the subject issuer(s) or securities. We also certify that no part of our compensation was, is, or will be directly or indirectly related to the specific recommendation(s) or view(s) in this report.

Terms & conditions and other disclosures:

Prabhudas Lilladher Pvt. Ltd, Mumbai, India (hereinafter referred to as "PL") is engaged in the business of Stock Broking, Portfolio Manager, Depository Participant and distribution for third party financial products. PL is a subsidiary of Prabhudas Lilladher Advisory Services Pvt Ltd. which has its various subsidiaries engaged in business of commodity broking, investment banking, financial services (margin funding) and distribution of third party financial/other products, details in respect of which are available at www.plindia.com

This document has been prepared by the Research Division of PL and is meant for use by the recipient only as information and is not for circulation. This document is not to be reported or copied or made available to others without prior permission of PL. It should not be considered or taken as an offer to sell or a solicitation to buy or sell any security.

The information contained in this report has been obtained from sources that are considered to be reliable. However, PL has not independently verified the accuracy or completeness of the same. Neither PL nor any of its affiliates, its directors or its employees accepts any responsibility of whatsoever nature for the information, statements and opinion given, made available or expressed herein or for any omission therein.

Recipients of this report should be aware that past performance is not necessarily a guide to future performance and value of investments can go down as well. The suitability or otherwise of any investments will depend upon the recipient's particular circumstances and, in case of doubt, advice should be sought from an independent expert/advisor.

Either PL or its affiliates or its directors or its employees or its representatives or its clients or their relatives may have position(s), make market, act as principal or engage in transactions of securities of companies referred to in this report and they may have used the research material prior to publication.

PL may from time to time solicit or perform investment banking or other services for any company mentioned in this document.

PL is registered as Research Analyst under Securities and Exchange Board of India (Research Analysts) Regulations, 2014 PL submits that no material disciplinary action has been taken on us by any Regulatory Authority impacting Equity Research Analysis activities.

PL or its research analysts or its associates or his relatives do not have any financial interest in the subject company.

PL or its research analysts or its associates or his relatives do not have actual/beneficial ownership of one per cent or more securities of the subject company at the end of the month immediately preceding the date of publication of the research report.

PL or its research analysts or its associates or his relatives do not have any material conflict of interest at the time of publication of the research report.

PL or its associates might have received compensation from the subject company in the past twelve months.

PL or its associates might have managed or co-managed public offering of securities for the subject company in the past twelve months or mandated by the subject company for any other assignment in the past twelve months.

PL or its associates might have received any compensation for investment banking or merchant banking or brokerage services from the subject company in the past twelve months.

PL or its associates might have received any compensation for products or services other than investment banking or merchant banking or brokerage services from the subject company in the past twelve months PL or its associates might have received any compensation or other benefits from the subject company or third party in connection with the research report.

PL encourages independence in research report preparation and strives to minimize conflict in preparation of research report. PL or its analysts did not receive any compensation or other benefits from the subject Company or third party in connection with the preparation of the research report. PL or its Research Analysts do not have any material conflict of interest at the time of publication of this report.

It is confirmed that Mrs.Vaishali Parekh B.com, Research Analyst of this report has not received any compensation from the companies mentioned in the report in the preceding twelve months compensation of our Research Analysts is not based on any specific merchant banking, investment banking or brokerage service transactions.

The Research analysts for this report certifies that all of the views expressed in this report accurately reflect his or her personal views about the subject company or companies and its or their securities, and no part of his or her compensation was, is or will be, directly or indirectly related to specific recommendations or views expressed in this report.

The research analysts for this report has not served as an officer, director or employee of the subject company PL or its research analysts have not engaged in market making activity for the subject company

Our sales people, traders, and other professionals or affiliates may provide oral or written market commentary or trading strategies to our clients that reflect opinions that are contrary to the opinions expressed herein, and our proprietary trading and investing businesses may make investment decisions that are inconsistent with the recommendations expressed herein. In reviewing these materials, you should be aware that any or all of the foregoing, among other things, may give rise to real or potential conflicts of interest.

PL and its associates, their directors and employees may (a) from time to time, have a long or short position in, and buy or sell the securities of the subject company or (b) be engaged in any other transaction involving such securities and earn brokerage or other compensation or act as a market maker in the financial instruments of the subject company or act as an advisor or lender/borrower to the subject company or may have any other potential conflict of interests with respect to any recommendation and other related information and opinions.