

Date: 25th Sep 2025

* Sensex 81715.63 - 386.47

* Nifty 25056.90 - 112.60

* Bank Nifty 55121.50 - 388.25

Market Preview

Nifty slips further; crucial support at 24900 zone

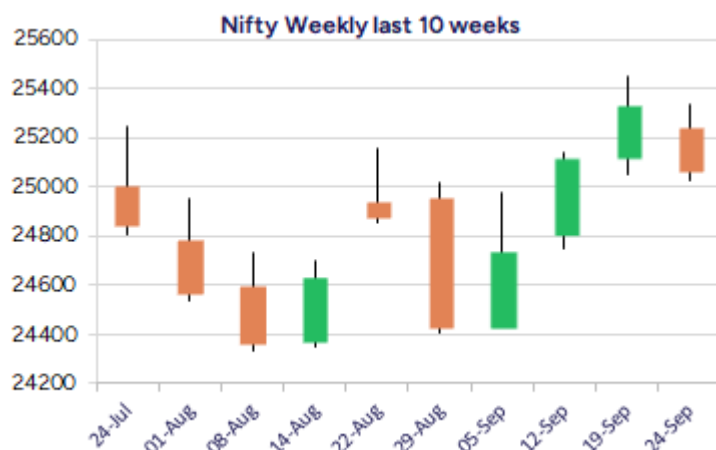
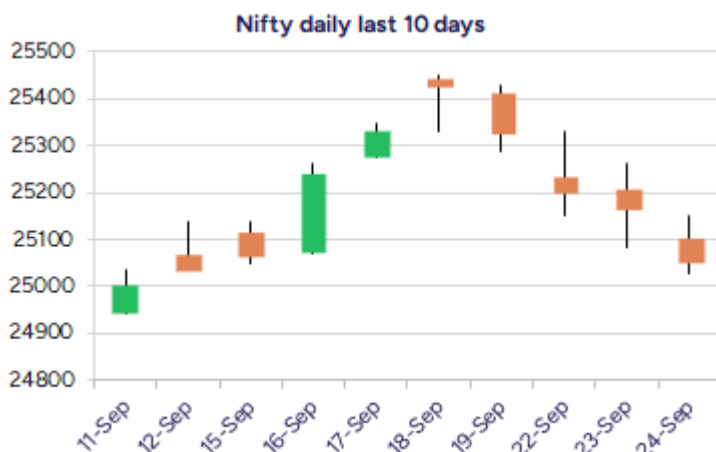
Nifty extended the losses further almost arriving near the 25000 zone with bias weakening along with the broader markets slipping down, with much anticipation of a revival among the market players in the coming days. BankNifty also lose steam moving below the 50EMA at 55200 level with bias slightly weakening and would need a significant revival to maintain the trend intact. The market breadth was weak with the advance decline ratio of 1:2 at close.

Market Forecast

Nifty daily range 24900 - 25300

Nifty, continue with the gradual downward slide for the 4th consecutive sessions with bias getting weak and has arrived near the 25000 zone with 24900 level positioned as the important support zone which is where the confluence of the significant 50EMA and 100 period SMA lies. With the broader markets also cooling off from the recent peak with profit booking, arrived near the important 50EMA zone where one can expect for some revival to expect for a trend reversal and thereafter, anticipate for fresh upward move during the festive season by end of the month. BankNifty, shed some gains with profit booking witnessed and has just moved below the 50EMA zone at 55200 level with bias slightly shaken. As mentioned earlier, with the Inverted head and shoulder pattern still in process on the daily chart, a decisive move above the neckline zone of 55900 level shall trigger for fresh upward move in the coming days provided the 54800-55000 support band is sustained to maintain the overall bias intact.

The support for the day is seen at 24900 levels, while the resistance is seen at 25300 levels. BankNifty would have the daily range of 54700-55700 levels.

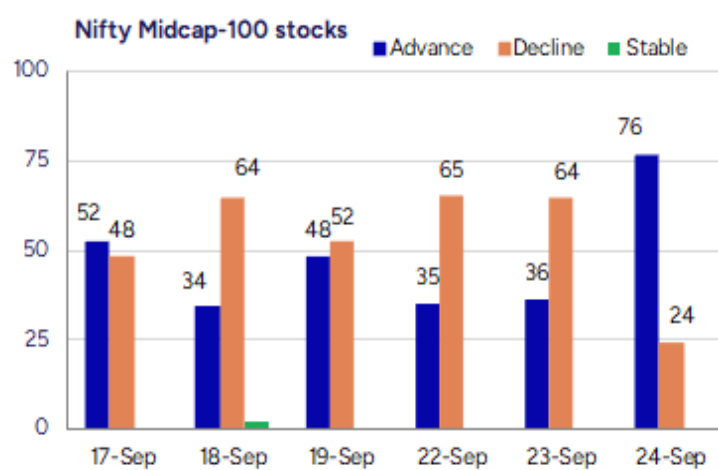
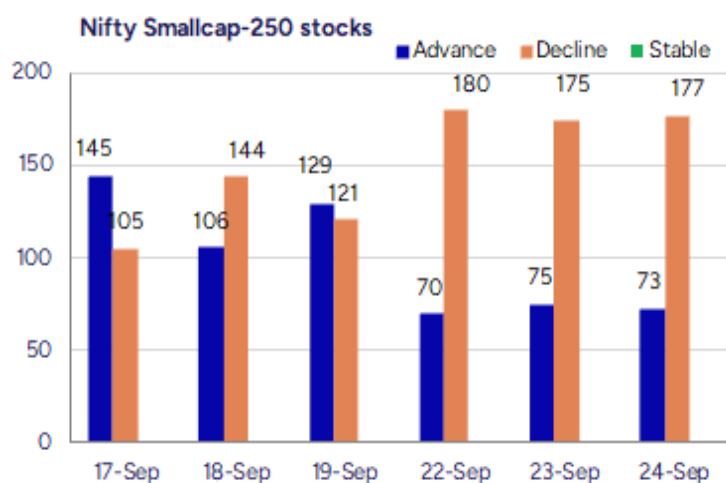


*Blue candle → Close rate > Open rate * Red candle → Close rate < Open rate

Indices	Period	Closing	% Chng	Trend	Reversal	2 Sup	1 Sup	Pivot	1 Res	2 Res
Nifty	Daily	25056.90	-0.45%	-3	25362.40	24956	25006	25078	25129	25200
	Weekly	25327.05	0.85%	3	24911.20	24876	25101	25275	25501	25675
	Monthly	24426.85	-1.38%	-1	24777.20	23826	24126	24639	24939	25452
Bank Nifty	Daily	55121.50	-0.70%	-1	55551.50	54754	54938	55224	55408	55695
	Weekly	55458.85	1.19%	1	54890.40	54301	54880	55358	55937	56414
	Monthly	53655.65	-4.12%	-1	56293.50	51929	52792	54474	55337	57019
Sensex	Daily	81715.63	-0.47%	-3	82725.20	81352	81534	81790	81971	82227
	Weekly	82626.23	0.88%	2	81265.20	81109	81868	82505	83263	83900
	Monthly	79809.65	-1.69%	-2	81431.75	78110	78960	80593	81443	83075

Gainers - Losers (Nifty 500 Stocks)

Gainers				Losers			
Company Name	Last Price	% Gain	Volume	Company Name	Last Price	% Loss	Volume
Proventus	1165.8	20	8000	Eimco Elecon	1719.7	-15.34	466320
DRS Cargo Mover	36	20	800	Kalana Ispat	35.35	-10.39	86000
Zuari Ind.	376.05	19.99	5859917	Indian Emulsifi	143	-9.09	220000
Bharat Gears	119.5	13	2552086	Thaai Casting	118.05	-7.77	16000
Beardsell	35.09	12.79	686243	STL Global	16.73	-7.62	171774
NR Agarwal	414	12.24	134269	Adani Power	150.6	-7.24	87512642
Auro Impex	51.2	11.67	40000	Aakaar Medical	87.9	-7.08	91200



Nifty Daily chart with RSI indicator



BankNifty Daily chart with RSI indicator



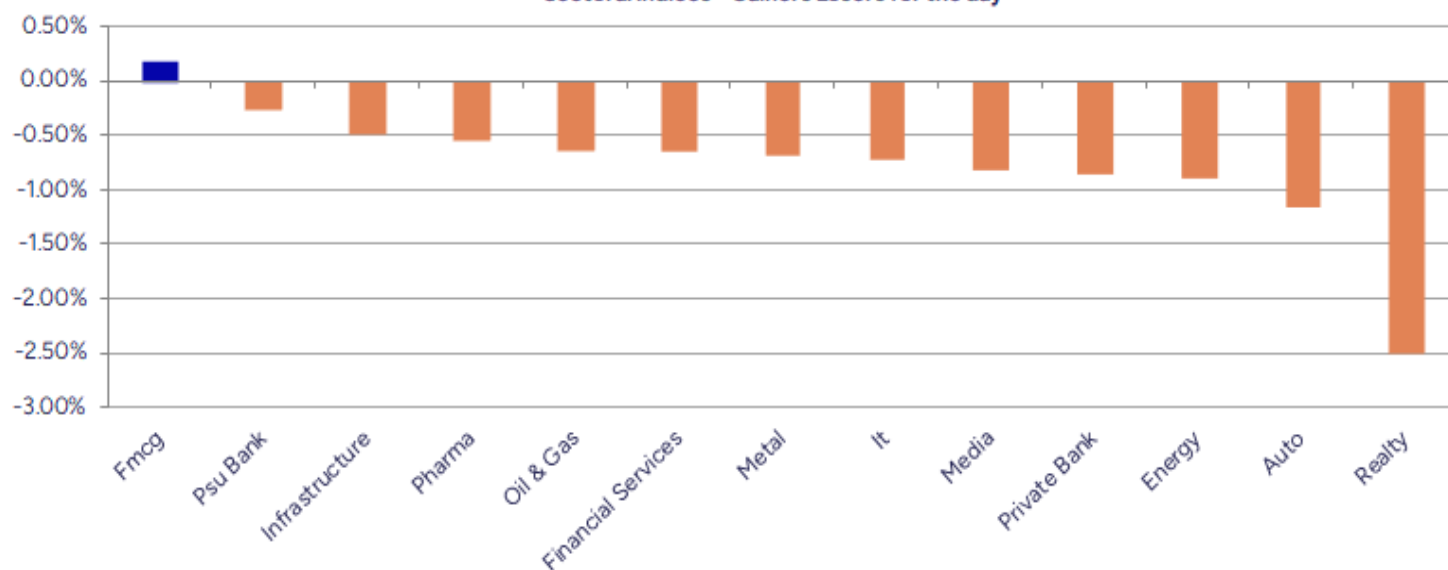
Breakouts - Cross above 200 DMA			
Company Name	LCP	Change %	200 DMA
Beardsell	35.09	9.01	32.19
Archies	22.19	8.24	20.5
RBM Infracon	491.3	4.39	470.66
AGI Greenpac	906.25	4.36	868.35
Arman Financial	1515.1	3.95	1457.57
Magson Retail	115.5	3.28	111.83
BIL VYAPAR	13.87	2.97	13.47
Williamson Mago	34	2.50	33.17
Sharp Chucks	103	2.48	100.51
EQUIPPP	21.6	2.22	21.13
Ratnaveer Preci	157.23	1.90	154.3
Agni Green	29	1.68	28.52
Cyber Media Res	92.95	1.51	91.57
Shreeoswal Seed	15.51	1.17	15.33
Jupiter Life	1512.4	1.14	1495.41
CIEINDIA	436.15	1.13	431.28
Shanthala	36.45	0.89	36.13
Himadri Special	482.05	0.66	478.88

* Stocks crossing above its Simple Moving Average (200DMA)

Breakdown - Cross below 200 DMA			
Company Name	LCP	Change %	200 DMA
Kriti Ind	131.52	-4.28	137.4
Apollo Sindoori	1375	-3.35	1422.66
Aatmaj Health	20.3	-3.33	21
DLF	734.3	-3.21	758.64
Pritish Nandy	33.13	-2.79	34.08
Trigyn Tech	84.6	-2.69	86.94
DB Realty	172.81	-2.44	177.13
Superhouse	168.98	-2.38	173.1
BLACK BOX	483.05	-2.34	494.62
DC Infotech	280	-2.33	286.67
SKP Bearing	226	-2.18	231.03
Sagility	43.29	-2.13	44.23
Tata Motors	682.8	-2.09	697.37
Shree OSFM	111.8	-2.02	114.1
Greenchef	66	-1.80	67.21
Cigniti Tech	1548.4	-1.77	1576.26
D-Link India	484	-1.75	492.6
Greenpanel Ind	284.25	-1.63	288.97

* Stocks crossing below its Simple Moving Average (200DMA)

Sectoral Indices - Gainers Losers for the day



Stocks witnessing a volume surge as compared to their 5 day average volume

Watch out for the stocks that have seen a huge spurt in its share price over the last three days

Volume Shockers - NSE					
Company name	LCP	% Chg	Volume	Avg Vol *	% Chg
Bajaj Electric	589.75	2.19	14556127	82265	17594
AB Cotspin	452.1	-0.96	137783	2700	5003
De Neers	187.75	-2.29	272400	5880	4533
Minda Corp	579.1	8.34	25401872	552049	4501
KCK Industries	31.95	0.63	617500	13600	4440
Pansari Develop	272.35	3.77	49855	1116	4366
Atal	21.09	-0.75	4316441	100889	4178
Sameera Agro	16.95	4.95	860000	22400	3739
NR Agarwal	414.55	12.39	136381	4048	3269
BEW Engineering	150.15	-2.47	36500	1125	3144
Archies	22.2	9.2	1893457	67640	2699
Munjal Auto Ind	104.41	11.74	5825765	260270	2138
Ingersoll Rand	3978.2	-0.59	112261	5395	1981
Matrimony.com	523.35	3.06	128742	6213	1972
Eimco Elecon	1744.4	-14.12	499366	24125	1970
Banaras Beads	126.58	2.61	526914	25687	1951
Jupiter Life	1518.8	2.06	235795	11977	1869
Himadri Special	486.2	7.65	15942599	918576	1636
Munjal Showa	146.07	5.62	441283	25610	1623
Wheels	861.2	6.43	1285307	78898	1529

* the Average Volume of last 5 days

Price Shockers - NSE				
Company name	LCP	Prv Close	% Chg	Volume
Emkay Global	377.41	262.98	43.51	2276271
Brand Concepts	415.7	305.1	36.25	539192
Karma Energy	70.8	53.2	33.08	202099
Zuari Ind.	376.05	289.9	29.72	5865562
Pentagon Rubber	73	56.6	28.98	79000
Medico Remedies	48.34	38.7	24.91	2522564
P S Raj Steels	231.55	186.75	23.99	36000
Panache Digilif	366.56	297.24	23.32	424192
Tata Inv Corp	8945.5	7333.5	21.98	3141336
OM Infra	133.59	110.29	21.13	658438
HP Telecom Ind	241.4	202	19.5	87600
Banaras Beads	126.58	106.2	19.19	526919
Bajaj Health	504.2	423.65	19.01	2929338
Shree Pushkar	454.65	384.2	18.34	605192
Munjal Auto Ind	104.61	90.27	15.89	8481553
IZMO	1223.35	1056.85	15.75	59310
Bafna Pharma	159.95	138.19	15.75	13029
Kavveri Defence	127.63	110.27	15.74	135676
United Polyfab	46.41	40.1	15.74	35770
Cura Tech	219.65	189.8	15.73	63

* the % price rise of the last 3 days

Nifty 50 stocks - Summary Details											
Symbol	LTP	Chng	% Chng	Volume (lacs)	Turnover (crs.)	52w High	Diff with 52w H	52w Low	Diff with 52w L	365 days % chng	30 days % chng
NIFTY 50	25056.90	-112.60	-0.45%	2443.76	22309.58	26277.35	4.64%	21743.65	15.24%	1.20%	-2.41%
ADANIENT	2624.00	-52.40	-1.96%	17.21	455.64	3211.00	18.28%	2025.00	29.58%	15.12%	-11.04%
ADANIPTS	1431.70	-9.90	-0.69%	26.03	374.80	1494.00	4.17%	995.65	43.80%	7.49%	0.20%
APOLLOHOSP	7662.00	-22.00	-0.29%	2.02	155.17	7980.00	3.98%	6001.00	27.68%	-3.01%	8.49%
ASIANPAINT	2458.50	11.60	0.47%	6.38	156.96	3358.00	26.79%	2124.75	15.71%	-2.30%	-26.01%
AXISBANK	1160.90	-9.90	-0.85%	128.12	1486.65	1281.65	9.42%	933.50	24.36%	9.33%	-5.96%
BAJAJ-AUTO	8824.50	-160.00	-1.78%	2.41	213.96	12774.00	30.92%	7089.35	24.48%	3.51%	-24.76%
BAJAJFINSV	2070.10	-14.30	-0.69%	6.03	124.97	2135.00	3.04%	1551.65	33.41%	6.03%	8.74%
BAJFINANCE	1027.60	2.10	0.20%	64.33	661.97	1036.00	0.81%	645.10	59.29%	14.65%	-86.48%
BEL	395.70	-8.75	-2.16%	108.33	432.03	436.00	9.24%	240.25	64.70%	7.90%	45.83%
BHARTIARTL	1936.00	-2.70	-0.14%	52.38	1009.58	2045.80	5.37%	1511.00	28.13%	0.28%	13.26%
CIPLA	1535.00	7.90	0.52%	9.44	144.81	1702.05	9.81%	1335.00	14.98%	-4.12%	-6.81%
COALINDIA	393.25	-0.80	-0.20%	51.40	202.34	517.85	24.06%	349.25	12.60%	5.23%	-19.74%
DRREDDY	1298.00	-10.40	-0.79%	7.50	97.69	1405.90	7.67%	1020.00	27.25%	2.41%	-80.03%
EICHERMOT	7025.00	34.50	0.49%	3.23	226.55	7122.50	1.37%	4508.75	55.81%	17.99%	40.85%
GRASIM	2811.70	-1.80	-0.06%	3.17	89.24	2911.00	3.41%	2276.95	23.49%	-0.01%	5.05%
HCLTECH	1440.20	10.40	0.73%	28.94	416.03	2012.20	28.43%	1302.75	10.55%	-2.49%	-18.76%
HDFCBANK	951.00	-6.20	-0.65%	151.17	1434.92	1018.85	6.66%	806.50	17.92%	-51.28%	-45.03%
HDFCLIFE	768.45	-6.60	-0.85%	11.02	84.97	820.75	6.37%	584.30	31.52%	-1.74%	8.99%
HEROMOTOCO	5270.00	-100.50	-1.87%	4.10	217.54	6246.25	15.63%	3344.00	57.60%	7.46%	-10.69%
HINDALCO	741.20	-4.70	-0.63%	24.15	179.68	772.65	4.07%	546.45	35.64%	5.92%	7.42%
HINDUNILVR	2556.60	34.40	1.36%	18.83	480.93	3035.00	15.76%	2136.00	19.69%	-4.10%	-15.29%
ICICIBANK	1383.00	-11.30	-0.81%	97.36	1345.66	1500.00	7.80%	1186.00	16.61%	-2.93%	4.17%
INDUSINDBK	741.90	-13.35	-1.77%	29.94	223.84	1490.85	50.24%	606.00	22.43%	-0.64%	-48.98%
INFY	1494.90	-2.60	-0.17%	49.37	736.04	2006.45	25.50%	1307.00	14.38%	0.67%	-21.42%
ITC	401.00	-2.20	-0.55%	123.80	497.25	528.50	24.12%	390.15	2.78%	1.23%	-21.62%
JIOFIN	306.25	-6.30	-2.02%	112.54	348.22	363.00	15.63%	198.65	54.17%	-2.51%	-11.68%
JSWSTEEL	1149.00	10.60	0.93%	21.11	242.54	1161.00	1.03%	880.00	30.57%	7.95%	15.98%
KOTAKBANK	2032.00	-15.70	-0.77%	36.79	749.48	2301.90	11.73%	1679.05	21.02%	3.08%	7.52%
LT	3674.20	16.60	0.45%	17.45	642.89	3963.50	7.30%	2965.30	23.91%	1.72%	-3.59%
M&M	3580.50	-34.10	-0.94%	13.20	474.36	3723.80	3.85%	2425.00	47.65%	6.22%	22.49%
MARUTI	16254.00	157.00	0.98%	6.64	1077.77	16375.00	0.74%	10725.00	51.55%	12.18%	27.61%
NESTLEIND	1178.20	9.80	0.84%	13.95	164.18	1389.00	15.18%	1055.00	11.68%	0.47%	-56.72%
NTPC	347.50	4.50	1.31%	146.54	509.48	448.45	22.51%	292.80	18.68%	1.78%	-19.09%
ONGC	238.41	1.75	0.74%	82.99	197.91	302.00	21.06%	205.00	16.30%	0.16%	-17.32%
POWERGRID	293.45	4.85	1.68%	140.32	409.13	366.25	19.88%	247.30	18.66%	1.85%	-15.33%
RELIANCE	1381.10	-8.70	-0.63%	59.23	821.67	1551.00	10.95%	1114.85	23.88%	-1.38%	-53.23%
SBILIFE	1819.50	0.10	0.01%	5.07	92.02	1927.95	5.63%	1372.55	32.56%	-2.13%	-2.72%
SBIN	866.15	-4.45	-0.51%	128.40	1120.02	880.50	1.63%	680.00	27.38%	6.66%	11.37%
SHRIRAMFIN	624.60	-4.20	-0.67%	21.29	133.15	730.45	14.49%	493.35	26.60%	2.10%	-82.20%
SUNPHARMA	1626.80	-4.40	-0.27%	11.31	184.36	1960.35	17.01%	1553.05	4.75%	-0.65%	-12.57%
TATACONSUM	1137.50	9.00	0.80%	11.01	125.14	1233.65	7.79%	882.90	28.84%	4.10%	-7.26%
TATAMOTORS	683.00	-18.35	-2.62%	132.52	911.80	1000.40	31.73%	535.75	27.48%	3.09%	-27.76%
TATASTEEL	172.70	-0.59	-0.34%	201.69	349.77	174.44	1.00%	122.62	40.84%	9.30%	13.99%
TCS	3036.80	-25.60	-0.84%	16.26	494.86	4494.90	32.44%	2991.60	1.51%	0.28%	-28.53%
TECHM	1453.60	-18.30	-1.24%	21.22	307.87	1807.70	19.59%	1209.40	20.19%	-2.20%	-9.26%
TITAN	3411.00	-28.20	-0.82%	6.90	236.30	3867.00	11.79%	2925.00	16.62%	-5.02%	-9.43%
TRENT	4892.00	1.00	0.02%	9.41	463.01	8345.00	41.38%	4488.00	9.00%	-9.73%	-34.48%
ULTRACEMCO	12210.00	-191.00	-1.54%	1.67	204.47	13097.00	6.77%	10047.85	21.52%	-1.49%	5.11%
WIPRO	244.88	-4.75	-1.90%	78.89	193.70	324.60	24.56%	228.00	7.40%	0.40%	-53.70%
ETERNAL	336.30	-2.05	-0.61%	120.73	406.25	343.90	2.21%	194.80	72.64%	6.03%	#VALUE!

Disclaimer / Disclosures

ANALYST CERTIFICATION

I, Mrs. Vaishali Parekh B.com, Research Analyst, author and the name subscribed to this report, hereby certify that all of the views expressed in this research report accurately reflect our views about the subject issuer(s) or securities. We also certify that no part of our compensation was, is, or will be directly or indirectly related to the specific recommendation(s) or view(s) in this report.

Terms & conditions and other disclosures:

Prabhudas Lilladher Pvt. Ltd, Mumbai, India (hereinafter referred to as "PL") is engaged in the business of Stock Broking, Portfolio Manager, Depository Participant and distribution for third party financial products. PL is a subsidiary of Prabhudas Lilladher Advisory Services Pvt Ltd. which has its various subsidiaries engaged in business of commodity broking, investment banking, financial services (margin funding) and distribution of third party financial/other products, details in respect of which are available at www.plindia.com

This document has been prepared by the Research Division of PL and is meant for use by the recipient only as information and is not for circulation. This document is not to be reported or copied or made available to others without prior permission of PL. It should not be considered or taken as an offer to sell or a solicitation to buy or sell any security.

The information contained in this report has been obtained from sources that are considered to be reliable. However, PL has not independently verified the accuracy or completeness of the same. Neither PL nor any of its affiliates, its directors or its employees accepts any responsibility of whatsoever nature for the information, statements and opinion given, made available or expressed herein or for any omission therein.

Recipients of this report should be aware that past performance is not necessarily a guide to future performance and value of investments can go down as well. The suitability or otherwise of any investments will depend upon the recipient's particular circumstances and, in case of doubt, advice should be sought from an independent expert/advisor.

Either PL or its affiliates or its directors or its employees or its representatives or its clients or their relatives may have position(s), make market, act as principal or engage in transactions of securities of companies referred to in this report and they may have used the research material prior to publication.

PL may from time to time solicit or perform investment banking or other services for any company mentioned in this document.

PL is registered as Research Analyst under Securities and Exchange Board of India (Research Analysts) Regulations, 2014 PL submits that no material disciplinary action has been taken on us by any Regulatory Authority impacting Equity Research Analysis activities.

PL or its research analysts or its associates or his relatives do not have any financial interest in the subject company.

PL or its research analysts or its associates or his relatives do not have actual/beneficial ownership of one per cent or more securities of the subject company at the end of the month immediately preceding the date of publication of the research report.

PL or its research analysts or its associates or his relatives do not have any material conflict of interest at the time of publication of the research report.

PL or its associates might have received compensation from the subject company in the past twelve months.

PL or its associates might have managed or co-managed public offering of securities for the subject company in the past twelve months or mandated by the subject company for any other assignment in the past twelve months.

PL or its associates might have received any compensation for investment banking or merchant banking or brokerage services from the subject company in the past twelve months.

PL or its associates might have received any compensation for products or services other than investment banking or merchant banking or brokerage services from the subject company in the past twelve months PL or its associates might have received any compensation or other benefits from the subject company or third party in connection with the research report.

PL encourages independence in research report preparation and strives to minimize conflict in preparation of research report. PL or its analysts did not receive any compensation or other benefits from the subject Company or third party in connection with the preparation of the research report. PL or its Research Analysts do not have any material conflict of interest at the time of publication of this report.

It is confirmed that Mrs.Vaishali Parekh B.com, Research Analyst of this report has not received any compensation from the companies mentioned in the report in the preceding twelve months compensation of our Research Analysts is not based on any specific merchant banking, investment banking or brokerage service transactions.

The Research analysts for this report certifies that all of the views expressed in this report accurately reflect his or her personal views about the subject company or companies and its or their securities, and no part of his or her compensation was, is or will be, directly or indirectly related to specific recommendations or views expressed in this report.

The research analysts for this report has not served as an officer, director or employee of the subject company PL or its research analysts have not engaged in market making activity for the subject company

Our sales people, traders, and other professionals or affiliates may provide oral or written market commentary or trading strategies to our clients that reflect opinions that are contrary to the opinions expressed herein, and our proprietary trading and investing businesses may make investment decisions that are inconsistent with the recommendations expressed herein. In reviewing these materials, you should be aware that any or all of the foregoing, among other things, may give rise to real or potential conflicts of interest.

PL and its associates, their directors and employees may (a) from time to time, have a long or short position in, and buy or sell the securities of the subject company or (b) be engaged in any other transaction involving such securities and earn brokerage or other compensation or act as a market maker in the financial instruments of the subject company or act as an advisor or lender/borrower to the subject company or may have any other potential conflict of interests with respect to any recommendation and other related information and opinions.