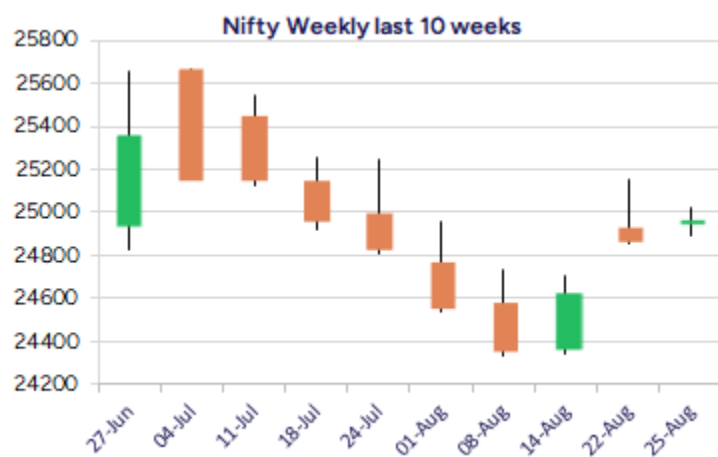
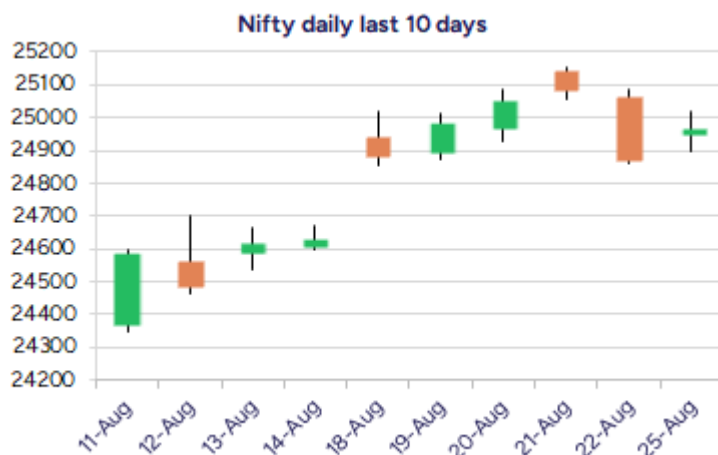


Date: 26th August 2025

* Sensex 81635.91 + 329.06

* Nifty 24967.75 + 97.65

* Bank Nifty 55139.30 - 10.10



*Blue candle → Close rate > Open rate * Red candle → Close rate < Open rate

Market Preview

Nifty ends near the 25000 zone

Nifty managed to recover and end near the 25000 zone with bias and sentiment precariously placed and would need a significant pick up to improve the bias. BankNifty remained dull with very narrow movement witnessed during the intraday session and is placed near the crucial support zone at 55000 level. The market breadth was overall flat with the advance decline indicating a neutral ratio at close.

Market Forecast

Nifty daily range 24800 - 25200

Nifty formed an inside bar pattern on the daily chart with a close near the 25000 zone after opening on a positive note in the morning sessions with hopes of positive developments awaited in the coming sessions. The index has managed to sustain above the important 50EMA at 24850 zone which is the near-term support as of now and on the upside, would need a decisive breach above the 25250 – 25300 zone to establish conviction and stability for further rise, as mentioned earlier.

BankNifty continue to remain sluggish with narrow movement visible in recent times and would need to sustain the important support zone of 55000 level and to improve the bias, would need to decisively break above the 56000 zone to gather strength and thereafter, expect for further rise in the coming days. The heavyweight banking stocks are all gripped between a tight range and desperately would need a fresh move to establish conviction and stability.

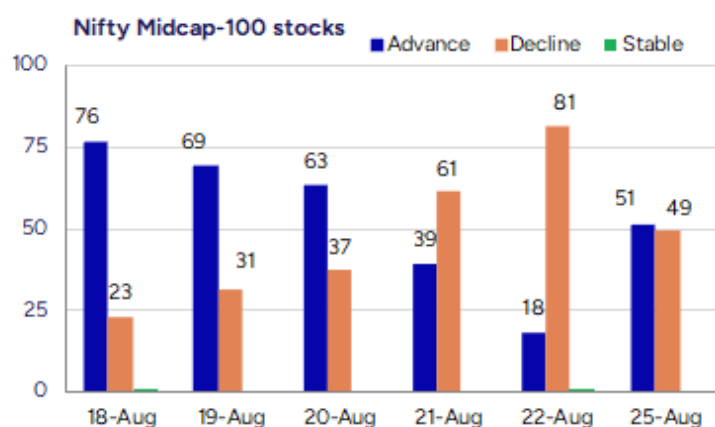
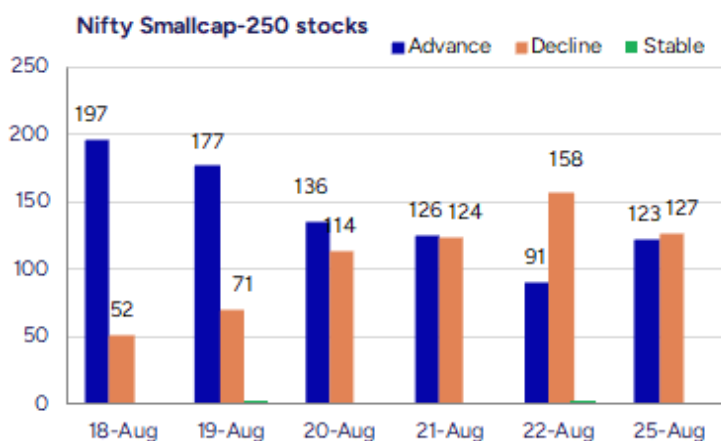
The support for the day is seen at 24800 levels, while the resistance is seen at 25200 levels. BankNifty would have the daily range of 54700-55700 levels.

Indices	Period	Closing	% Chng	Trend	Reversal	2 Sup	1 Sup	Pivot	1 Res	2 Res
Nifty	Daily	24967.75	0.39%	10	24951.95	24834	24901	24961	25028	25088
	Weekly	24870.10	0.97%	-7	24803.40	24660	24765	24958	25063	25256
	Monthly	24768.35	-2.93%	3	24708.35	23999	24384	24994	25379	25990
Bank Nifty	Daily	55139.30	-0.02%	-2	55423.60	54907	55023	55165	55281	55422
	Weekly	55149.40	-0.35%	-7	56036.20	54423	54786	55471	55834	56519
	Monthly	55961.95	-2.36%	4	55173.20	54361	55162	56360	57160	58359
Sensex	Daily	81635.91	0.40%	10	81537.10	81166	81401	81600	81835	82034
	Weekly	81306.85	0.88%	-7	81196.40	80556	80931	81578	81954	82601
	Monthly	81185.58	-2.90%	-1	81149.00	78601	79893	81912	83205	85224

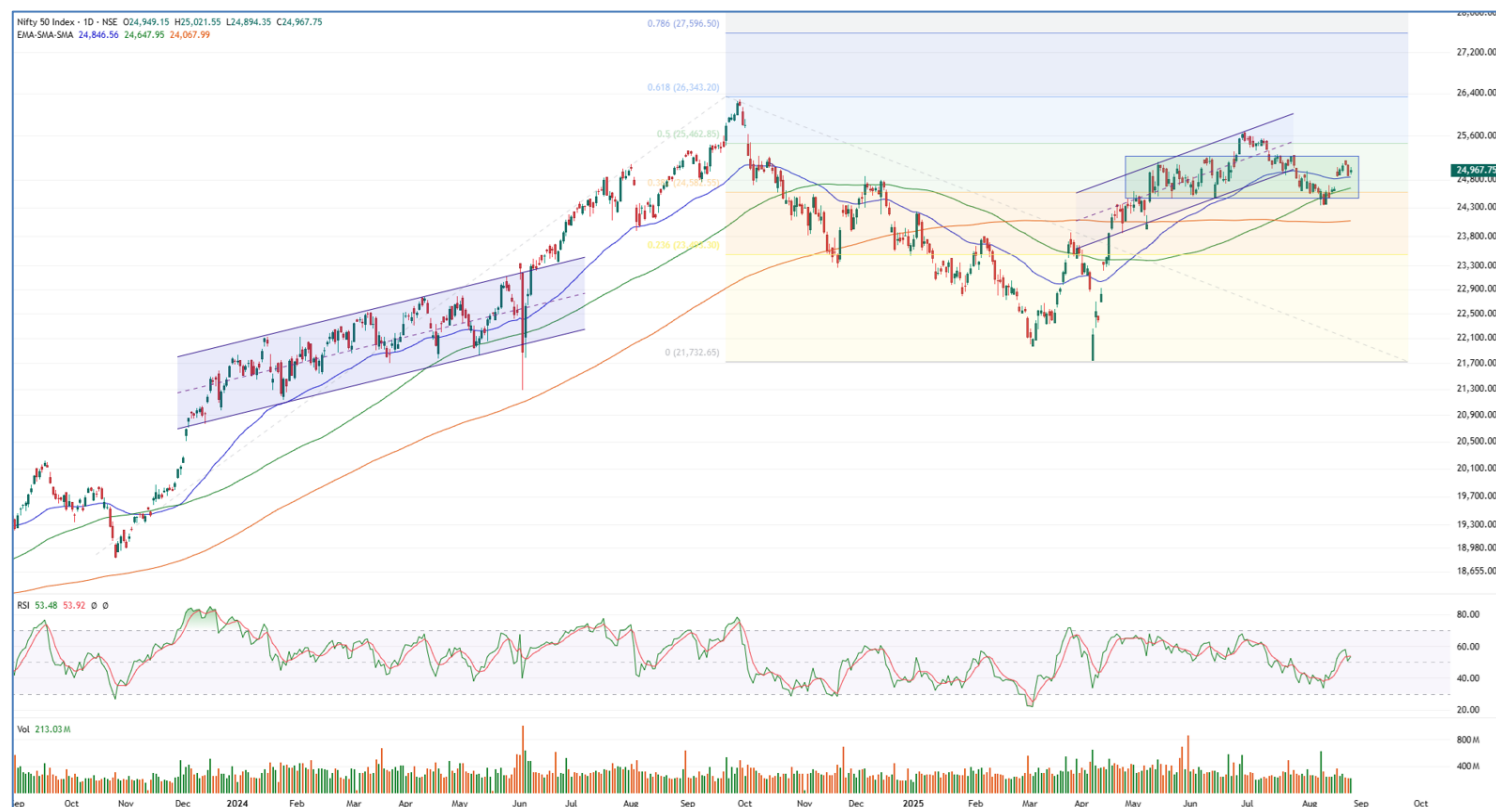
Gainers - Losers (Nifty 500 Stocks)

Gainers			
Company Name	Last Price	% Gain	Volume
Reliable Data S	113.4	20	316812
Emami Paper	116.52	20	1280828
Flysbs Aviation	705.2	19.99	1047000
Shri Rama Multi	50.51	19.35	2357836
JK Paper	409.3	17.38	24523622
Jeyyam Global F	42	14.75	310000
West Coast Pap	550.25	13.76	4389116

Losers			
Company Name	Last Price	% Loss	Volume
Affordable Robo	348.85	-12.5	137797
Dar Credit	45.65	-10.05	96000
Manglam Infra	29.45	-9.66	130000
Wonder Elect.	130.4	-9.6	985196
DocMode Health	42	-9.58	800
D P Wires	230.09	-7.78	90148
Astron Paper	13.17	-6.93	335103



Nifty Daily chart with RSI indicator



BankNifty Daily chart with RSI indicator



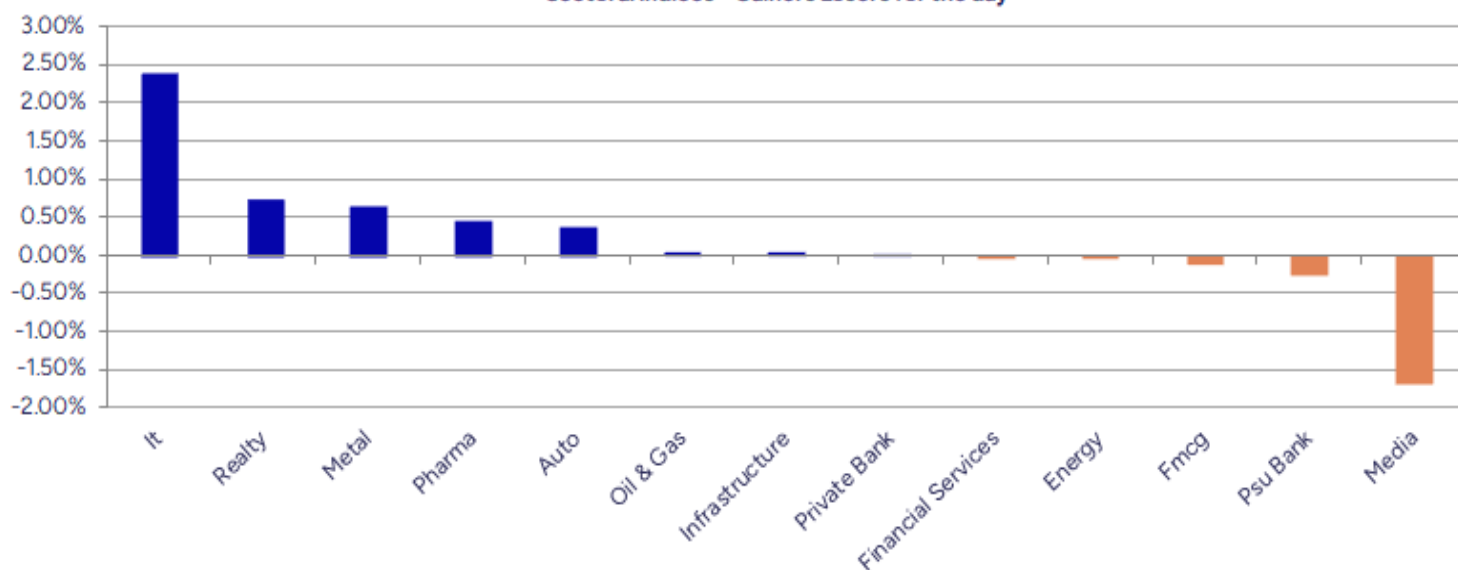
Breakouts - Cross above 200 DMA			
Company Name	LCP	Change %	200 DMA
EPM	116.52	17.37	99.28
JK Paper	409.3	11.09	368.44
West Coast Pap	550.25	9.10	504.35
Tamil Newsprint	169.77	6.47	159.46
Malu Paper	42.7	5.22	40.58
Tembo Global	614.2	4.97	585.13
Country Club	18.77	4.45	17.97
SATIA	88.34	4.10	84.86
Loyal Textiles	315.15	2.76	306.69
Sinclairs Hotel	99.13	2.00	97.19
Veranda Learnin	232.47	1.99	227.94
Ortin Global	14.34	1.70	14.1
MMP Industries	286.35	1.57	281.92
Innova Captab	934.75	1.54	920.58
Hitech Corp	209.45	1.48	206.39
Mastek	2601.3	1.24	2569.33
DLF	772	1.23	762.63
Accelya	1432.5	1.21	1415.4

* Stocks crossing above its Simple Moving Average (200DMA)

Breakdown - Cross below 200 DMA			
Company Name	LCP	Change %	200 DMA
Manglam Infra	29.45	-8.37	32.14
Thaai Casting	109.35	-4.51	114.51
Ravi Kumar Dist	26.68	-4.30	27.88
TIL	273.75	-4.20	285.75
Suryoday Small	125.31	-3.94	130.45
Cool Caps	76.95	-3.91	80.08
Kriti Ind	136.2	-3.81	141.6
Network People	2192.1	-3.76	2277.84
Arman Financial	1410.3	-2.63	1448.38
IKIO Tech	221.34	-2.56	227.15
Magson Retail	108	-2.40	110.66
Unicommerce Eso	137.77	-2.10	140.73
Indiabulls Ent	18.28	-1.98	18.65
Sahyadri Ind	284.3	-1.89	289.78
NDTV	142.47	-1.88	145.2
Softtech Engine	383.25	-1.55	389.28
Bharat Rasayan	10221	-1.45	10371.32
Silver Touch Te	700.25	-1.44	710.49

* Stocks crossing below its Simple Moving Average (200DMA)

Sectoral Indices - Gainers Losers for the day



Stocks witnessing a volume surge as compared to their 5 day average volume

Watch out for the stocks that have seen a huge spurt in its share price over the last three days

Volume Shockers - NSE					
Company name	LCP	% Chg	Volume	Avg Vol *	% Chg
Tamil Newsprint	169	10.07	36318	22487	8203406
Malu Paper	42.15	10.98	6062	16429	1001975
JK Paper	408	17.01	152634	15234	23404327
West Coast Pap	546.65	13.01	39590	10349	4136656
Nakoda Group	28.26	3.25	15521	9876	1548440
Andhra Paper	80.58	8.92	65301	9387	6195176
Gandhi Spl Tube	863.45	11.67	6693	5783	393727
Orient Press	90.41	3.87	3097	5743	180921
EPM	116.52	20	27266	4503	1254949
Orient Paper	29.25	5.63	249285	4127	10537037
Star Paper	182	4.59	8524	3384	296985
KCK Industries	45	6.64	13600	2602	367500
Krishival Foods	430	4.85	1200	2564	31968
Praxis Home Ret	13.84	4.93	62438	2440	1585723
Newgen Software	916.6	5.79	384740	2251	9045104
eClerx Services	4220.7	8.29	47383	2179	1079787
Astron Paper &	13.25	-6.36	14174	1897	283035
Action Const	1072.1	8.8	462804	1782	8709791
Netweb	2370	2.05	163390	1705	2949765
Magnum Ventures	25.04	6.87	66177	1697	1189276

* the Average Volume of last 5 days

Price Shockers - NSE				
Company name	LCP	Prv Close	% Chg	Volume
TVS Motor	3284.7	645.96	408.5	733705
IZMO	646.3	408.05	58.39	2974314
Reliable Data S	113.4	85.43	32.74	316812
CCCL	19.86	15.05	31.96	7202969
Manglam Infra	29.45	23	28.04	130000
Apollo Micro Sy	250.74	202.83	23.62	59851400
Lancor Holdings	26.51	21.72	22.05	243467
Emami Paper	116.52	95.97	21.41	1280828
BGR Energy	181.33	149.53	21.27	689750
Royal Orchid	502.25	424.55	18.3	2035880
Kross	203.35	171.97	18.25	33880035
Shri Rama Multi	50.51	42.86	17.85	2357836
Lotus Eye Care	101.93	86.59	17.72	585710
Sellowrap Indus	116.1	99.85	16.27	115200
Heranba	376.05	324.05	16.05	201929
HOV Services	74.26	64.17	15.72	3827
Eastern Silk	32.14	27.78	15.69	13
Osia Hyper Reta	15.13	13.08	15.67	66471
Flexituff Ventu	22.17	19.17	15.65	30469
JK Paper	409.3	354.25	15.54	24523622

* the % price rise of the last 3 days

Nifty 50 stocks - Summary Details											
Symbol	LTP	Chng	% Chng	Volume (lacs)	Turnover (crs.)	52w High	Diff with 52w H	52w Low	Diff with 52w L	365 days % chng	30 days % chng
NIFTY 50	24967.75	97.65	0.39%	2130.12	19869.46	26277.35	4.98%	21743.65	14.83%	0.13%	0.19%
ADANIENT	2302.80	-22.10	-0.95%	5.42	125.70	3211.00	28.28%	2025.00	13.72%	-8.83%	-24.43%
ADANIPTS	1344.60	3.40	0.25%	12.14	162.57	1509.50	10.92%	995.65	35.05%	-3.95%	-10.07%
APOLLOHOSP	7848.50	-74.00	-0.93%	4.03	316.77	7980.00	1.65%	6001.00	30.79%	6.08%	15.48%
ASIANPAINT	2494.00	-10.50	-0.42%	7.66	191.12	3394.90	26.54%	2124.75	17.38%	7.20%	-20.61%
AXISBANK	1071.10	0.20	0.02%	27.11	290.48	1281.65	16.43%	933.50	14.74%	-1.40%	-8.15%
BAJAJ-AUTO	8750.00	70.50	0.81%	3.61	314.63	12774.00	31.50%	7089.35	23.42%	7.48%	-16.59%
BAJAJFINSV	1964.00	-1.90	-0.10%	8.70	170.60	2135.00	8.01%	1551.65	26.57%	-1.00%	19.88%
BAJFINANCE	901.30	6.80	0.76%	58.38	526.43	978.80	7.92%	645.10	39.71%	-2.11%	-86.72%
BEL	372.30	-2.55	-0.68%	85.75	320.18	436.00	14.61%	240.25	54.96%	-5.15%	22.50%
BHARTIARTL	1928.90	-4.40	-0.23%	24.51	472.46	2045.80	5.71%	1465.00	31.67%	-0.24%	28.31%
CIPLA	1604.00	11.20	0.70%	12.98	207.82	1702.05	5.76%	1335.00	20.15%	3.93%	1.16%
COALINDIA	380.05	5.60	1.50%	43.49	164.88	543.55	30.08%	349.25	8.82%	-1.67%	-30.51%
DRREDDY	1281.90	4.30	0.34%	9.67	124.16	1414.99	9.41%	1020.00	25.68%	-0.02%	-81.63%
EICHERMOT	5990.00	65.50	1.11%	8.23	490.05	6024.50	0.57%	4508.75	32.85%	9.05%	20.96%
GRASIM	2814.00	0.20	0.01%	5.92	166.37	2898.40	2.91%	2276.95	23.59%	3.88%	2.37%
HCLTECH	1505.00	38.70	2.64%	27.65	414.93	2012.20	25.21%	1302.75	15.52%	-1.60%	-11.75%
HDFCBANK	1969.20	4.60	0.23%	87.59	1723.08	2037.70	3.36%	1613.00	22.08%	-2.00%	20.89%
HDFCLIFE	787.00	-1.75	-0.22%	23.26	183.29	820.75	4.11%	584.30	34.69%	3.46%	8.20%
HEROMOTOCO	5067.00	69.10	1.38%	6.93	349.82	6246.25	18.88%	3344.00	51.53%	18.13%	-7.19%
HINDALCO	716.80	12.60	1.79%	45.39	324.61	772.65	7.23%	546.45	31.17%	1.55%	2.79%
HINDUNILVR	2628.00	-1.90	-0.07%	6.68	175.58	3035.00	13.41%	2136.00	23.03%	8.88%	-6.60%
ICICIBANK	1430.90	-5.50	-0.38%	67.38	963.67	1500.00	4.61%	1176.60	21.61%	-2.76%	19.35%
INDUSINDBK	772.00	11.90	1.57%	27.91	214.59	1498.00	48.46%	606.00	27.39%	-7.72%	-45.26%
INFY	1533.30	45.80	3.08%	106.94	1636.17	2006.45	23.58%	1307.00	17.31%	-1.86%	-20.12%
ITC	399.15	0.85	0.21%	104.39	416.71	528.50	24.47%	390.15	2.31%	-2.71%	-21.25%
JIOFIN	319.55	-1.05	-0.33%	114.42	366.09	363.00	11.97%	198.65	60.86%	3.00%	-2.00%
JSWSTEEL	1058.90	4.30	0.41%	15.52	164.18	1089.20	2.78%	880.00	20.33%	2.70%	12.07%
KOTAKBANK	1982.90	-3.70	-0.19%	23.70	469.77	2301.90	13.86%	1679.05	18.10%	-6.50%	9.27%
LT	3604.40	8.60	0.24%	9.80	352.72	3963.50	9.06%	2965.30	21.55%	4.44%	-0.08%
M&M	3400.00	-3.00	-0.09%	18.60	631.75	3432.00	0.93%	2425.00	40.21%	4.82%	23.34%
MARUTI	14450.00	101.00	0.70%	3.57	514.25	14478.00	0.19%	10725.00	34.73%	15.68%	16.64%
NESTLEIND	1152.80	-10.10	-0.87%	9.31	107.47	1389.00	17.01%	1055.00	9.27%	-48.87%	-54.02%
NTPC	337.85	0.85	0.25%	71.42	241.95	448.45	24.66%	292.80	15.39%	1.14%	-16.16%
ONGC	236.81	0.52	0.22%	88.54	209.32	334.40	29.18%	205.00	15.52%	-1.66%	-25.90%
POWERGRID	284.40	1.05	0.37%	74.27	210.56	366.25	22.35%	247.30	15.00%	-3.00%	-15.73%
RELIANCE	1413.70	4.50	0.32%	59.79	844.49	1551.00	8.85%	1114.85	26.81%	1.26%	-53.03%
SBILIFE	1849.70	-9.30	-0.50%	6.14	113.54	1936.00	4.46%	1372.55	34.76%	1.47%	3.90%
SBIN	816.50	0.25	0.03%	56.71	463.64	875.45	6.73%	680.00	20.07%	1.20%	0.11%
SHRIRAMFIN	620.80	4.95	0.80%	68.50	425.11	730.45	15.01%	493.35	25.83%	#VALUE!	-80.30%
SUNPHARMA	1658.00	16.20	0.99%	19.05	314.02	1960.35	15.42%	1553.05	6.76%	-3.37%	-7.54%
TATACONSUM	1081.80	-2.30	-0.21%	4.45	48.25	1234.30	12.36%	882.90	22.53%	2.82%	-9.42%
TATAMOTORS	686.10	5.80	0.85%	64.29	441.26	1142.00	39.92%	535.75	28.06%	-1.03%	-37.31%
TATASTEEL	159.65	1.10	0.69%	163.75	261.38	170.18	6.19%	122.62	30.20%	-1.78%	2.82%
TCS	3142.10	88.10	2.88%	34.47	1080.19	4592.25	31.58%	2991.60	5.03%	-2.61%	-31.58%
TECHM	1526.80	21.80	1.45%	13.86	212.16	1807.70	15.54%	1209.40	26.24%	2.95%	-5.84%
TITAN	3648.70	27.70	0.76%	7.00	255.73	3867.00	5.65%	2925.00	24.74%	4.57%	1.43%
TRENT	5426.00	8.00	0.15%	6.56	357.06	8345.00	34.98%	4488.00	20.90%	7.44%	-22.03%
ULTRACEMCO	12600.00	11.00	0.09%	1.99	251.34	12930.00	2.55%	10047.85	25.40%	2.77%	11.00%
WIPRO	254.40	5.76	2.32%	163.90	418.00	324.60	21.63%	228.00	11.58%	-4.07%	-51.48%
ETERNAL	320.50	1.40	0.44%	208.79	668.55	331.35	3.27%	194.80	64.53%	2.75%	#VALUE!

Disclaimer / Disclosures

ANALYST CERTIFICATION

I, Mrs. Vaishali Parekh B.com, Research Analyst, author and the name subscribed to this report, hereby certify that all of the views expressed in this research report accurately reflect our views about the subject issuer(s) or securities. We also certify that no part of our compensation was, is, or will be directly or indirectly related to the specific recommendation(s) or view(s) in this report.

Terms & conditions and other disclosures:

Prabhudas Lilladher Pvt. Ltd, Mumbai, India (hereinafter referred to as "PL") is engaged in the business of Stock Broking, Portfolio Manager, Depository Participant and distribution for third party financial products. PL is a subsidiary of Prabhudas Lilladher Advisory Services Pvt Ltd. which has its various subsidiaries engaged in business of commodity broking, investment banking, financial services (margin funding) and distribution of third party financial/other products, details in respect of which are available at www.plindia.com

This document has been prepared by the Research Division of PL and is meant for use by the recipient only as information and is not for circulation. This document is not to be reported or copied or made available to others without prior permission of PL. It should not be considered or taken as an offer to sell or a solicitation to buy or sell any security.

The information contained in this report has been obtained from sources that are considered to be reliable. However, PL has not independently verified the accuracy or completeness of the same. Neither PL nor any of its affiliates, its directors or its employees accepts any responsibility of whatsoever nature for the information, statements and opinion given, made available or expressed herein or for any omission therein.

Recipients of this report should be aware that past performance is not necessarily a guide to future performance and value of investments can go down as well. The suitability or otherwise of any investments will depend upon the recipient's particular circumstances and, in case of doubt, advice should be sought from an independent expert/advisor.

Either PL or its affiliates or its directors or its employees or its representatives or its clients or their relatives may have position(s), make market, act as principal or engage in transactions of securities of companies referred to in this report and they may have used the research material prior to publication.

PL may from time to time solicit or perform investment banking or other services for any company mentioned in this document.

PL is registered as Research Analyst under Securities and Exchange Board of India (Research Analysts) Regulations, 2014 PL submits that no material disciplinary action has been taken on us by any Regulatory Authority impacting Equity Research Analysis activities.

PL or its research analysts or its associates or his relatives do not have any financial interest in the subject company.

PL or its research analysts or its associates or his relatives do not have actual/beneficial ownership of one per cent or more securities of the subject company at the end of the month immediately preceding the date of publication of the research report.

PL or its research analysts or its associates or his relatives do not have any material conflict of interest at the time of publication of the research report.

PL or its associates might have received compensation from the subject company in the past twelve months.

PL or its associates might have managed or co-managed public offering of securities for the subject company in the past twelve months or mandated by the subject company for any other assignment in the past twelve months.

PL or its associates might have received any compensation for investment banking or merchant banking or brokerage services from the subject company in the past twelve months.

PL or its associates might have received any compensation for products or services other than investment banking or merchant banking or brokerage services from the subject company in the past twelve months PL or its associates might have received any compensation or other benefits from the subject company or third party in connection with the research report.

PL encourages independence in research report preparation and strives to minimize conflict in preparation of research report. PL or its analysts did not receive any compensation or other benefits from the subject Company or third party in connection with the preparation of the research report. PL or its Research Analysts do not have any material conflict of interest at the time of publication of this report.

It is confirmed that Mrs.Vaishali Parekh B.com, Research Analyst of this report has not received any compensation from the companies mentioned in the report in the preceding twelve months compensation of our Research Analysts is not based on any specific merchant banking, investment banking or brokerage service transactions.

The Research analysts for this report certifies that all of the views expressed in this report accurately reflect his or her personal views about the subject company or companies and its or their securities, and no part of his or her compensation was, is or will be, directly or indirectly related to specific recommendations or views expressed in this report.

The research analysts for this report has not served as an officer, director or employee of the subject company PL or its research analysts have not engaged in market making activity for the subject company

Our sales people, traders, and other professionals or affiliates may provide oral or written market commentary or trading strategies to our clients that reflect opinions that are contrary to the opinions expressed herein, and our proprietary trading and investing businesses may make investment decisions that are inconsistent with the recommendations expressed herein. In reviewing these materials, you should be aware that any or all of the foregoing, among other things, may give rise to real or potential conflicts of interest.

PL and its associates, their directors and employees may (a) from time to time, have a long or short position in, and buy or sell the securities of the subject company or (b) be engaged in any other transaction involving such securities and earn brokerage or other compensation or act as a market maker in the financial instruments of the subject company or act as an advisor or lender/borrower to the subject company or may have any other potential conflict of interests with respect to any recommendation and other related information and opinions.