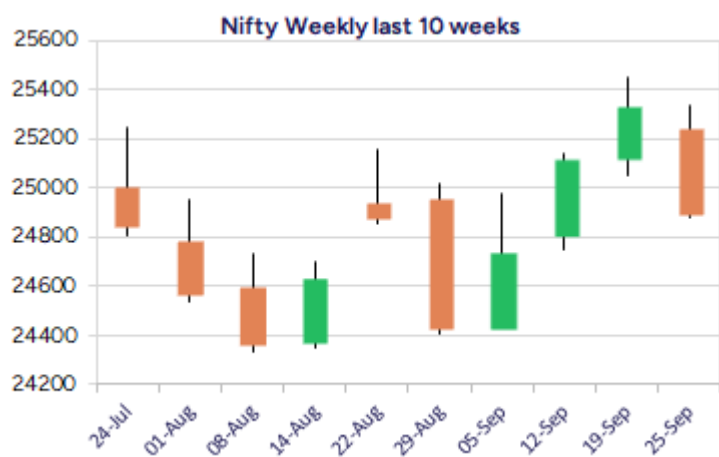
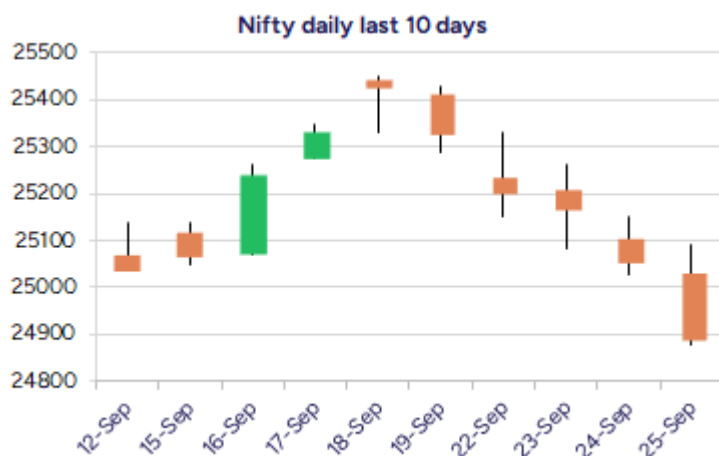


Date: 26th Sep 2025

* Sensex 81159.68 - 555.95

* Nifty 24890.85 - 166.05

* Bank Nifty 54976.20 - 145.30



*Blue candle → Close rate > Open rate * Red candle → Close rate < Open rate

Market Preview

Nifty breaches below the 24900 zone

Nifty slips further with a bearish candle formation on the daily chart moving below the important support zone of 24900 level, with the bias maintained with a cautious approach. BankNifty witnessing a sluggish movement slipped below the 55000 zone to weaken the bias and would need a significant revival to improve the bias in the coming sessions. The market breadth was weak with the advance decline indicating a ratio of 2:5 at close.

Market Forecast

Nifty daily range 24750 - 25200

Nifty, has slipped significantly for the 5th consecutive sessions losing almost 600 points from the peak made near 25450 zone breaching below the important support positioned near the confluence of 50EMA and 100 period SMA at 24900 level and the overall bias has turned into a cautious approach as of now. With the sentiment shaken, the index would need a revival in the coming days failing which it can slide further towards our next major and crucial support zone lying near the 24500 level below which the overall trend would turn negative.

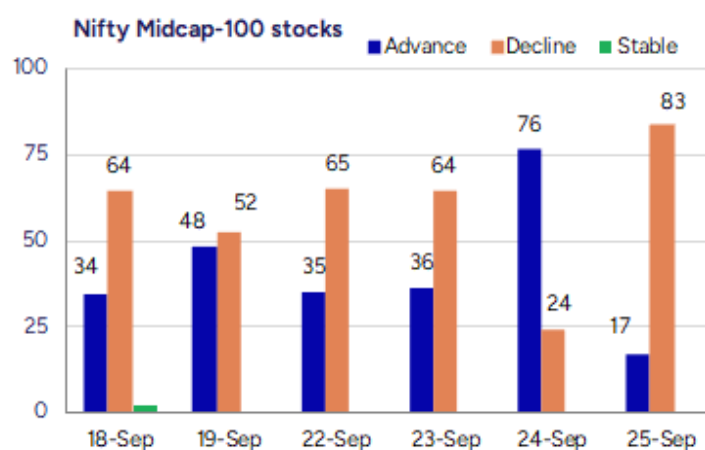
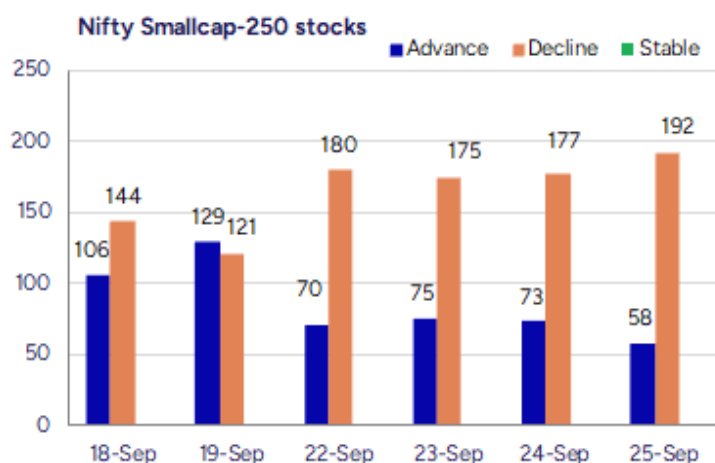
BankNifty, witnessed a gradual slide to move below the 55000 zone with the overall bias having no clear direction and with sluggish movement visible, the index needs to pick momentum and move past the 55800 zone to improve the sentiment and thereafter, expect for fresh positive move in the coming days. The index would have the important 54800-55000 support band which needs to be sustained to maintain the overall bias intact failing which it can slip further to 53600 zone with bias weakening further.

The support for the day is seen at 24750 levels, while the resistance is seen at 25200 levels. BankNifty would have the daily range of 54500-55600 levels.

Indices	Period	Closing	% Chng	Trend	Reversal	2 Sup	1 Sup	Pivot	1 Res	2 Res
Nifty	Daily	24890.85	-0.66%	-4	25304.65	24740	24815	24954	25030	25168
	Weekly	25327.05	0.85%	3	24911.20	24876	25101	25275	25501	25675
	Monthly	24426.85	-1.38%	-1	24777.20	23826	24126	24639	24939	25452
Bank Nifty	Daily	54976.20	-0.26%	-2	55480.30	54679	54827	55052	55201	55425
	Weekly	55458.85	1.19%	1	54890.40	54301	54880	55358	55937	56414
	Monthly	53655.65	-4.12%	-1	56293.50	51929	52792	54474	55337	57019
Sensex	Daily	81159.68	-0.68%	-4	82504.20	80617	80888	81364	81636	82112
	Weekly	82626.23	0.88%	2	81265.20	81109	81868	82505	83263	83900
	Monthly	79809.65	-1.69%	-2	81431.75	78110	78960	80593	81443	83075

Gainers - Losers (Nifty 500 Stocks)

Gainers				Losers			
Company Name	Last Price	% Gain	Volume	Company Name	Last Price	% Loss	Volume
Natural Capsule	259.89	20	540768	Viviana Power	1511	-8.37	24000
TVS Electronics	613.8	18.07	2229811	Mono Pharmacare	22.25	-8.25	4000
Chemcon Special	283.51	15.22	7033476	Tolins Tyres	181.01	-7.48	667756
Canarys	33.4	14.38	512000	Kontor Space	69.75	-6.69	9600
Madhav Copper	53.36	13.73	1985946	Emkay Global	354.35	-6.64	220332
Italian Edibles	39.45	12.71	110000	Akash Infraproj	28.59	-6.45	28133
STC India	143.91	11.45	952637	Kross	205.9	-6.38	857825



Nifty Daily chart with RSI indicator



BankNifty Daily chart with RSI indicator



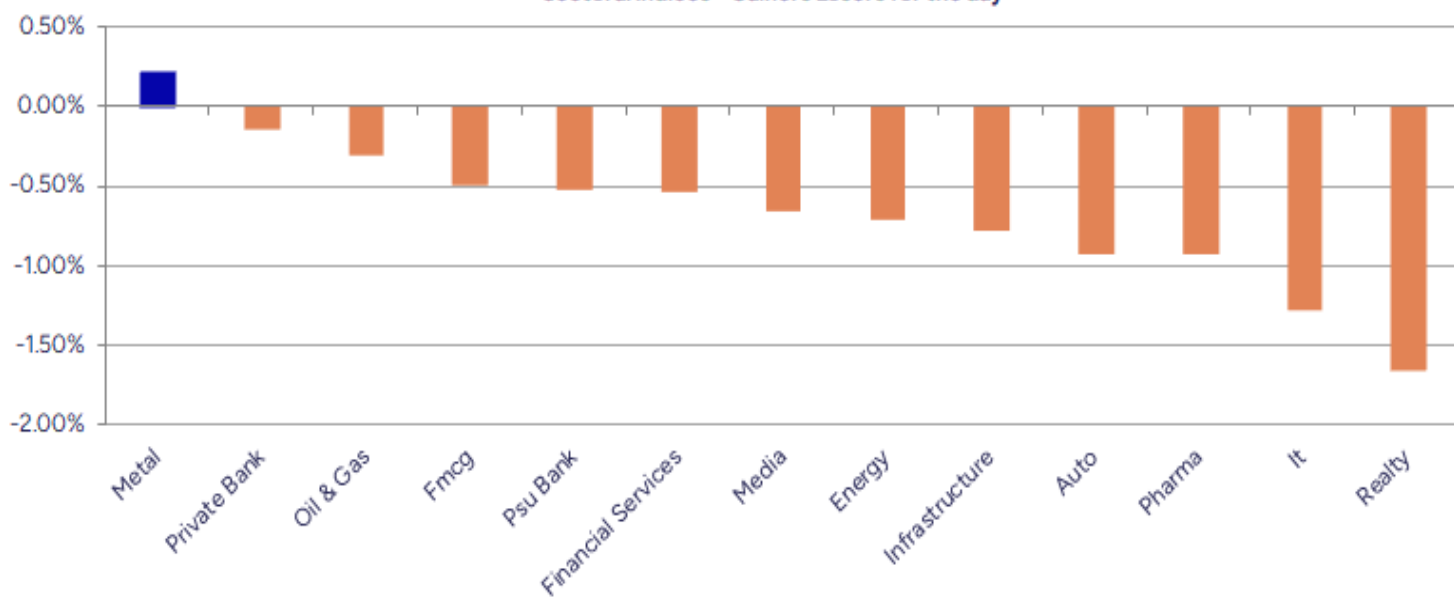
Breakouts - Cross above 200 DMA			
Company Name	LCP	Change %	200 DMA
STC India	143.91	7.39	134.01
Canarys Automat	33.4	4.87	31.85
Esconet Technol	240.75	4.36	230.7
Max India	224.11	4.03	215.42
Motor and Gen F	28.57	3.82	27.52
Trigyn Tech	89.96	3.65	86.79
Madhav Copper	53.36	3.13	51.74
Slone Infosyste	300.3	2.86	291.95
Balu Forge Indu	651.05	1.81	639.45
Gujarat Pipavav	156.24	1.56	153.84
Sinclairs Hotel	99.27	1.26	98.03
Eldeco Housing	800.1	1.25	790.21
Venus Pipes	1395.7	0.95	1382.55
Shanthala	36.3	0.83	36
Essar Shipping	29.66	0.71	29.45
Aegis Logistics	773.9	0.50	770.06
Brightcom Group	14.93	0.47	14.86
Premier Energie	1049.5	0.43	1045.05

* Stocks crossing above its Simple Moving Average (200DMA)

Breakdown - Cross below 200 DMA			
Company Name	LCP	Change %	200 DMA
Revathi Equipme	1164.85	-4.00	1213.35
Pearl Global In	1301.3	-3.60	1349.92
Coral India Fin	43.16	-3.23	44.6
Tokyo Plast	122.27	-2.87	125.88
Shankar Lal Ram	69.16	-2.78	71.14
D P Wires	249.54	-2.41	255.71
Power Grid Corp	285.9	-2.20	292.34
WOL 3D India	132.8	-2.19	135.77
RITES	252.3	-1.93	257.27
Afcons Infra	444.5	-1.86	452.91
VIP Clothing	38.2	-1.75	38.88
Redtape	150.19	-1.68	152.76
Shriram Finance	612.7	-1.56	622.42
Veto Switch	116.49	-1.50	118.26
DOMS Industries	2555.3	-1.48	2593.59
Stove	684.15	-1.47	694.34
JB Chemicals	1669.4	-1.43	1693.69
Sanofi Consumer	4902	-1.30	4966.75

* Stocks crossing below its Simple Moving Average (200DMA)

Sectoral Indices - Gainers Losers for the day



Stocks witnessing a volume surge as compared to their 5 day average volume

Watch out for the stocks that have seen a huge spurt in its share price over the last three days

Volume Shockers - NSE					
Company name	LCP	% Chg	Volume	Avg Vol *	% Chg
Fineotex Chem	245.79	5.88	26886222	134164	19940
Madhav Copper	53.36	13.73	1985946	23479	8358
RACL Geartech	982.4	6.31	428385	6513	6478
Max India	224.11	11.33	4752259	81664	5719
Cool Caps	92.4	-2.48	420000	8400	4900
V-Guard Ind	369.8	1.18	5800564	155764	3624
De Neers	180.1	-4.07	187200	5880	3084
Atal	21.16	0.33	3120495	100889	2993
Netweb	3593.5	5.18	3872797	163390	2270
Texmaco Infra	96.06	1.69	2026286	85910	2259
KCK Industries	30.9	-2.98	317500	13600	2235
Total Transport	73.86	3.65	91529	4969	1742
Italian Edibles	39.45	12.71	110000	6000	1733
Sintercom India	121.39	-0.36	31645	2075	1425
R M Drip & Spri	762.6	0.2	134013	9800	1267
Balkrishna	23.72	0.04	758097	60403	1155
SOLARA ACTIVE P	672.4	4.55	951821	81733	1065
One Point One S	43.43	-2.05	4805398	451825	964
Shiva Texyarn	189	0.44	12137	1171	936
Chemcon Special	283.51	15.22	7033476	689686	920

* the Average Volume of last 5 days

Price Shockers - NSE				
Company name	LCP	Prv Close	% Chg	Volume
Zuari Ind.	403.9	286.55	40.95	11986771
TVS Electronics	613.8	472.6	29.88	2229811
Sharp Chucks	112.7	87.35	29.02	313000
Panache Digilif	384.88	317.38	21.27	28668
Brand Concepts	382.5	316.1	21.01	40868
HP Telecom Ind	253.45	209.5	20.98	6000
Bajaj Health	494.6	420.4	17.65	682186
Nila Spaces	18.73	16	17.06	8246894
Munjal Auto Ind	105.55	90.38	16.78	4964543
Cinevista	21.46	18.43	16.44	346525
Giriraj Civil D	377	323.9	16.39	6000
Beardsell	37.01	31.84	16.24	860040
Lumax Auto Tech	1280.1	1102.7	16.09	392096
IZMO	1284.5	1109.65	15.76	62228
Bafna Pharma	167.94	145.09	15.75	11854
United Polyfab	48.73	42.1	15.75	98889
Kavveri Defence	134.01	115.78	15.75	558988
Cura Tech	230.6	199.25	15.73	561
Shreeoswal Seed	16.28	14.08	15.63	77942
Sumeet Ind	167.09	144.64	15.52	175306

* the % price rise of the last 3 days

Nifty 50 stocks - Summary Details											
Symbol	LTP	Chng	% Chng	Volume (lacs)	Turnover (crs.)	52w High	Diff with 52w H	52w Low	Diff with 52w L	365 days % chng	30 days % chng
NIFTY 50	24890.85	-166.05	-0.66%	3425.32	32715.55	26277.35	5.28%	21743.65	14.47%	0.75%	-3.40%
ADANIENT	2573.30	-46.50	-1.77%	14.90	388.55	3211.00	19.86%	2025.00	27.08%	12.68%	-13.93%
ADANIPTS	1408.00	-23.60	-1.65%	19.71	280.20	1494.00	5.76%	995.65	41.42%	6.74%	-1.69%
APOLLOHOSP	7640.00	-3.50	-0.05%	3.74	286.07	7980.00	4.26%	6001.00	27.31%	-3.52%	6.86%
ASIANPAINT	2404.00	-53.20	-2.17%	15.18	366.39	3358.00	28.41%	2124.75	13.14%	-1.89%	-25.03%
AXISBANK	1163.00	4.10	0.35%	111.88	1304.89	1281.65	9.26%	933.50	24.58%	8.22%	-7.05%
BAJAJ-AUTO	8827.50	-11.50	-0.13%	4.41	389.67	12774.00	30.89%	7089.35	24.52%	1.84%	-28.37%
BAJAJFINSV	2033.00	-36.20	-1.75%	9.52	194.99	2135.00	4.78%	1551.65	31.02%	5.25%	7.77%
BAJFINANCE	1012.50	-17.25	-1.68%	167.31	1707.66	1036.00	2.27%	645.10	56.95%	15.12%	-86.44%
BEL	403.65	8.20	2.07%	238.04	961.32	436.00	7.42%	240.25	68.01%	5.50%	38.12%
BHARTIARTL	1935.00	3.90	0.20%	71.33	1383.95	2045.80	5.42%	1511.00	28.06%	-0.11%	10.32%
CIPLA	1507.80	-30.20	-1.96%	25.03	382.49	1702.05	11.41%	1335.00	12.94%	-3.44%	-7.25%
COALINDIA	392.80	-0.05	-0.01%	45.64	179.60	517.85	24.15%	349.25	12.47%	4.91%	-21.52%
DRREDDY	1274.70	-23.40	-1.80%	12.41	159.27	1405.90	9.33%	1020.00	24.97%	1.60%	-80.49%
EICHERMOT	6975.00	-36.50	-0.52%	3.76	263.36	7122.50	2.07%	4508.75	54.70%	18.35%	43.69%
GRASIM	2785.70	-21.70	-0.77%	7.23	201.68	2911.00	4.30%	2276.95	22.34%	-0.23%	5.27%
HCLTECH	1427.40	-14.90	-1.03%	27.13	386.53	2012.20	29.06%	1302.75	9.57%	-1.64%	-17.71%
HDFCBANK	951.20	0.15	0.02%	314.13	2990.61	1018.85	6.64%	806.50	17.94%	-51.59%	-45.96%
HDFCLIFE	768.00	-2.25	-0.29%	20.81	159.13	820.75	6.43%	584.30	31.44%	-2.35%	5.88%
HEROMOTOCO	5356.50	79.50	1.51%	6.40	340.15	6246.25	14.24%	3344.00	60.18%	5.58%	-14.76%
HINDALCO	747.00	5.95	0.80%	47.03	352.16	772.65	3.32%	546.45	36.70%	5.23%	7.31%
HINDUNILVR	2542.90	-6.60	-0.26%	16.24	413.55	3030.00	16.08%	2136.00	19.05%	-3.06%	-15.82%
ICICIBANK	1373.70	-9.00	-0.65%	216.13	2978.99	1500.00	8.42%	1186.00	15.83%	-3.74%	4.60%
INDUSINDBK	740.60	-0.15	-0.02%	30.37	225.07	1481.00	49.99%	606.00	22.21%	-2.55%	-49.44%
INFY	1491.20	-3.40	-0.23%	94.92	1412.31	2006.45	25.68%	1307.00	14.09%	0.48%	-21.19%
ITC	400.45	-0.55	-0.14%	220.06	880.33	528.50	24.23%	390.15	2.64%	0.68%	-22.43%
JIOFIN	301.60	-5.15	-1.68%	121.47	370.23	363.00	16.91%	198.65	51.82%	-4.32%	-13.41%
JSWSTEEL	1147.50	-1.60	-0.14%	15.81	181.66	1161.00	1.16%	880.00	30.40%	8.96%	17.00%
KOTAKBANK	2014.80	-16.50	-0.81%	40.08	809.45	2301.90	12.47%	1679.05	20.00%	2.25%	4.99%
LT	3650.00	-23.80	-0.65%	19.99	731.98	3963.50	7.91%	2965.30	23.09%	2.17%	-3.01%
M&M	3538.20	-36.70	-1.03%	21.06	746.74	3723.80	4.98%	2425.00	45.91%	5.05%	17.22%
MARUTI	16236.00	-13.00	-0.08%	4.90	795.81	16375.00	0.85%	10725.00	51.38%	13.24%	28.12%
NESTLEIND	1175.80	-2.80	-0.24%	12.74	149.96	1389.00	15.35%	1055.00	11.45%	1.35%	-56.75%
NTPC	340.20	-7.40	-2.13%	132.28	455.85	448.45	24.14%	292.80	16.19%	3.15%	-18.85%
ONGC	239.70	1.18	0.49%	101.51	243.86	302.00	20.63%	205.00	16.93%	0.94%	-19.27%
POWERGRID	284.20	-9.10	-3.10%	162.43	467.78	366.25	22.40%	247.30	14.92%	3.51%	-14.03%
RELIANCE	1374.80	-8.20	-0.59%	114.11	1569.61	1551.00	11.36%	1114.85	23.32%	-1.86%	-53.70%
SBILIFE	1812.40	-4.70	-0.26%	10.04	181.62	1927.95	5.99%	1372.55	32.05%	-2.25%	-5.37%
SBIN	861.45	-4.75	-0.55%	86.79	750.41	880.50	2.16%	680.00	26.68%	6.12%	8.03%
SHRIRAMFIN	612.30	-12.85	-2.06%	42.80	263.92	730.45	16.17%	493.35	24.11%	1.51%	-82.48%
SUNPHARMA	1625.00	-2.10	-0.13%	27.63	450.79	1960.35	17.11%	1553.05	4.63%	-0.90%	-12.65%
TATACONSUM	1135.00	-5.10	-0.45%	10.24	116.23	1227.90	7.57%	882.90	28.55%	5.17%	-5.90%
TATAMOTORS	664.90	-18.05	-2.64%	246.88	1642.00	1000.40	33.54%	535.75	24.11%	0.39%	-29.72%
TATASTEEL	172.35	-0.31	-0.18%	170.27	294.12	174.44	1.20%	122.62	40.56%	8.90%	12.12%
TCS	2958.00	-77.40	-2.55%	49.74	1481.13	4494.90	34.19%	2951.00	0.24%	-0.61%	-28.89%
TECHM	1441.50	-10.90	-0.75%	15.82	228.94	1807.70	20.26%	1209.40	19.19%	-3.50%	-9.63%
TITAN	3388.70	-29.60	-0.87%	11.40	385.56	3867.00	12.37%	2925.00	15.85%	-5.60%	-10.52%
TRENT	4720.00	-177.00	-3.61%	15.18	728.64	8345.00	43.44%	4488.00	5.17%	-9.62%	-35.76%
ULTRACEMCO	12160.00	-54.00	-0.44%	2.73	332.06	13097.00	7.15%	10047.85	21.02%	-2.98%	2.11%
WIPRO	242.25	-2.34	-0.96%	79.58	193.33	324.60	25.37%	228.00	6.25%	-1.63%	-54.27%
ETERNAL	332.55	-3.25	-0.97%	166.52	554.97	343.90	3.30%	194.80	70.71%	5.23%	#VALUE!

Disclaimer / Disclosures

ANALYST CERTIFICATION

I, Mrs. Vaishali Parekh B.com, Research Analyst, author and the name subscribed to this report, hereby certify that all of the views expressed in this research report accurately reflect our views about the subject issuer(s) or securities. We also certify that no part of our compensation was, is, or will be directly or indirectly related to the specific recommendation(s) or view(s) in this report.

Terms & conditions and other disclosures:

Prabhudas Lilladher Pvt. Ltd, Mumbai, India (hereinafter referred to as "PL") is engaged in the business of Stock Broking, Portfolio Manager, Depository Participant and distribution for third party financial products. PL is a subsidiary of Prabhudas Lilladher Advisory Services Pvt Ltd. which has its various subsidiaries engaged in business of commodity broking, investment banking, financial services (margin funding) and distribution of third party financial/other products, details in respect of which are available at www.plindia.com

This document has been prepared by the Research Division of PL and is meant for use by the recipient only as information and is not for circulation. This document is not to be reported or copied or made available to others without prior permission of PL. It should not be considered or taken as an offer to sell or a solicitation to buy or sell any security.

The information contained in this report has been obtained from sources that are considered to be reliable. However, PL has not independently verified the accuracy or completeness of the same. Neither PL nor any of its affiliates, its directors or its employees accepts any responsibility of whatsoever nature for the information, statements and opinion given, made available or expressed herein or for any omission therein.

Recipients of this report should be aware that past performance is not necessarily a guide to future performance and value of investments can go down as well. The suitability or otherwise of any investments will depend upon the recipient's particular circumstances and, in case of doubt, advice should be sought from an independent expert/advisor.

Either PL or its affiliates or its directors or its employees or its representatives or its clients or their relatives may have position(s), make market, act as principal or engage in transactions of securities of companies referred to in this report and they may have used the research material prior to publication.

PL may from time to time solicit or perform investment banking or other services for any company mentioned in this document.

PL is registered as Research Analyst under Securities and Exchange Board of India (Research Analysts) Regulations, 2014 PL submits that no material disciplinary action has been taken on us by any Regulatory Authority impacting Equity Research Analysis activities.

PL or its research analysts or its associates or his relatives do not have any financial interest in the subject company.

PL or its research analysts or its associates or his relatives do not have actual/beneficial ownership of one per cent or more securities of the subject company at the end of the month immediately preceding the date of publication of the research report.

PL or its research analysts or its associates or his relatives do not have any material conflict of interest at the time of publication of the research report.

PL or its associates might have received compensation from the subject company in the past twelve months.

PL or its associates might have managed or co-managed public offering of securities for the subject company in the past twelve months or mandated by the subject company for any other assignment in the past twelve months.

PL or its associates might have received any compensation for investment banking or merchant banking or brokerage services from the subject company in the past twelve months.

PL or its associates might have received any compensation for products or services other than investment banking or merchant banking or brokerage services from the subject company in the past twelve months PL or its associates might have received any compensation or other benefits from the subject company or third party in connection with the research report.

PL encourages independence in research report preparation and strives to minimize conflict in preparation of research report. PL or its analysts did not receive any compensation or other benefits from the subject Company or third party in connection with the preparation of the research report. PL or its Research Analysts do not have any material conflict of interest at the time of publication of this report.

It is confirmed that Mrs.Vaishali Parekh B.com, Research Analyst of this report has not received any compensation from the companies mentioned in the report in the preceding twelve months compensation of our Research Analysts is not based on any specific merchant banking, investment banking or brokerage service transactions.

The Research analysts for this report certifies that all of the views expressed in this report accurately reflect his or her personal views about the subject company or companies and its or their securities, and no part of his or her compensation was, is or will be, directly or indirectly related to specific recommendations or views expressed in this report.

The research analysts for this report has not served as an officer, director or employee of the subject company PL or its research analysts have not engaged in market making activity for the subject company

Our sales people, traders, and other professionals or affiliates may provide oral or written market commentary or trading strategies to our clients that reflect opinions that are contrary to the opinions expressed herein, and our proprietary trading and investing businesses may make investment decisions that are inconsistent with the recommendations expressed herein. In reviewing these materials, you should be aware that any or all of the foregoing, among other things, may give rise to real or potential conflicts of interest.

PL and its associates, their directors and employees may (a) from time to time, have a long or short position in, and buy or sell the securities of the subject company or (b) be engaged in any other transaction involving such securities and earn brokerage or other compensation or act as a market maker in the financial instruments of the subject company or act as an advisor or lender/borrower to the subject company or may have any other potential conflict of interests with respect to any recommendation and other related information and opinions.