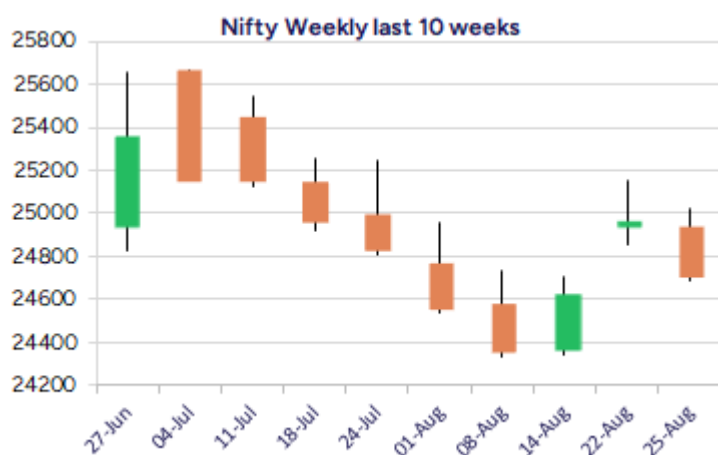
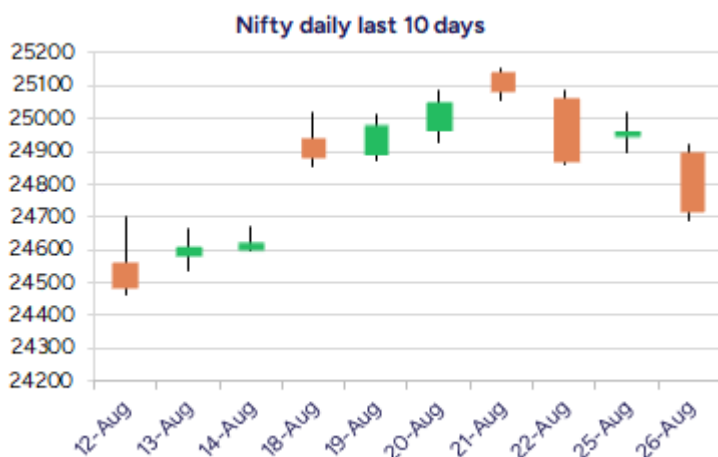


Date: 28th August 2025

* Sensex 80786.54 - 849.37

* Nifty 24712.05 - 255.70

* Bank Nifty 54450.45 - 688.85



*Blue candle → Close rate > Open rate * Red candle → Close rate < Open rate

Market Preview

Nifty tanks below the 50EMA at 24850 zone

Nifty witnessed heavy profit booking to form a bearish candle on the daily chart breaching below the important 50EMA at 24850 zone to weaken the bias. BankNifty has broken the important support of 55000 zone with a big bearish candle to turn the bias weak and is currently precariously placed. The market breadth was weak with the advance decline indicating a ratio of 1:3 at close.

Market Forecast

Nifty daily range 24500 - 25000

Nifty once again plunged heavily with a bearish candle formation on the daily chart to slip below the important 50EMA at 24850 zone to weaken the bias and awaiting further developments and global cues with respect to tariff rates which shall shape the future directional move of the indices. As mentioned earlier, technically, the index would have the crucial and major support zone near the 24500 level which needs to be sustained to maintain the overall trend intact and on the upside a decisive move above 25000 zone is needed to revive the overall sentiment.

BankNifty with a bearish candle formation has broken below the important and crucial support zone at 55000 level to weaken the bias and sentiment expecting for further slide with next major support visible near 53500 zone. For the bias to improve, the index needs to witness a revival and move past the significant 50EMA level at 55700 zone to establish some conviction and thereafter, expect for further rise in the coming days.

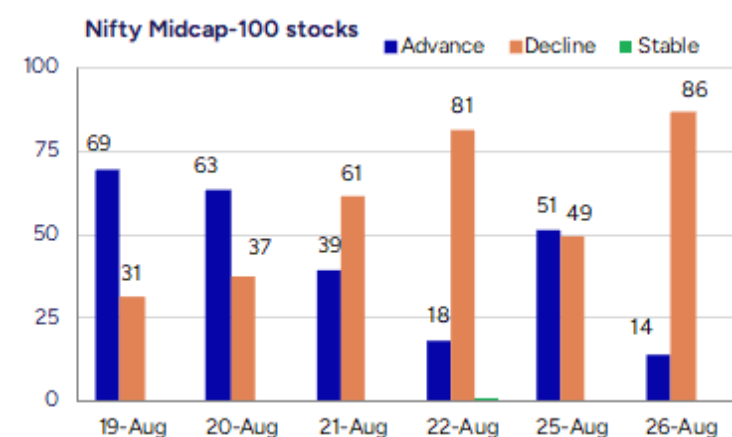
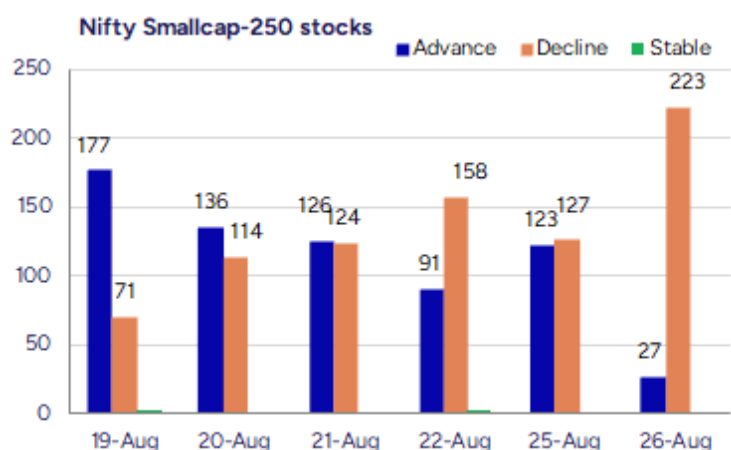
The support for the day is seen at 24500 levels, while the resistance is seen at 25000 levels. BankNifty would have the daily range of 53800-55000 levels.

Indices	Period	Closing	% Chng	Trend	Reversal	2 Sup	1 Sup	Pivot	1 Res	2 Res
Nifty	Daily	24712.05	-1.02%	-1	24974.45	24544	24628	24774	24858	25004
	Weekly	24870.10	0.97%	-7	24803.40	24660	24765	24958	25063	25256
	Monthly	24768.35	-2.93%	3	24708.35	23999	24384	24994	25379	25990
Bank Nifty	Daily	54450.45	-1.25%	-3	55143.10	53966	54208	54638	54881	55311
	Weekly	55149.40	-0.35%	-7	56036.20	54423	54786	55471	55834	56519
	Monthly	55961.95	-2.36%	4	55173.20	54361	55162	56360	57160	58359
Sensex	Daily	80786.54	-1.04%	-1	81564.60	80210	80498	80974	81263	81739
	Weekly	81306.85	0.88%	-7	81196.40	80556	80931	81578	81954	82601
	Monthly	81185.58	-2.90%	-1	81149.00	78601	79893	81912	83205	85224

Gainers - Losers (Nifty 500 Stocks)

Gainers			
Company Name	Last Price	% Gain	Volume
Reliable Data S	135.47	19.46	1990540
Elgi Rubber	63.31	19.25	1195327
Patel Retail	287.7	12.82	3857621
Aatmaj Health	21.4	12.63	16000
Apex Ecotech	126.4	11.46	64000
Rattanindia Ent	58.2	10.19	100815310
KCK Ind	49.3	10.17	562500

Losers			
Company Name	Last Price	% Loss	Volume
Affordable Robo	279.1	-19.99	437451
U. Y. Fincorp	12.22	-15.02	3837211
Sahyadri Ind	259	-8.9	37585
Aaron Industrie	217.65	-8.88	122264
Mohit Ind	31.49	-8.75	32269
Surani Steel Tu	84.05	-8.19	4800
InfoBeans Tech	631.05	-8.08	127325



Nifty Daily chart with RSI indicator



BankNifty Daily chart with RSI indicator



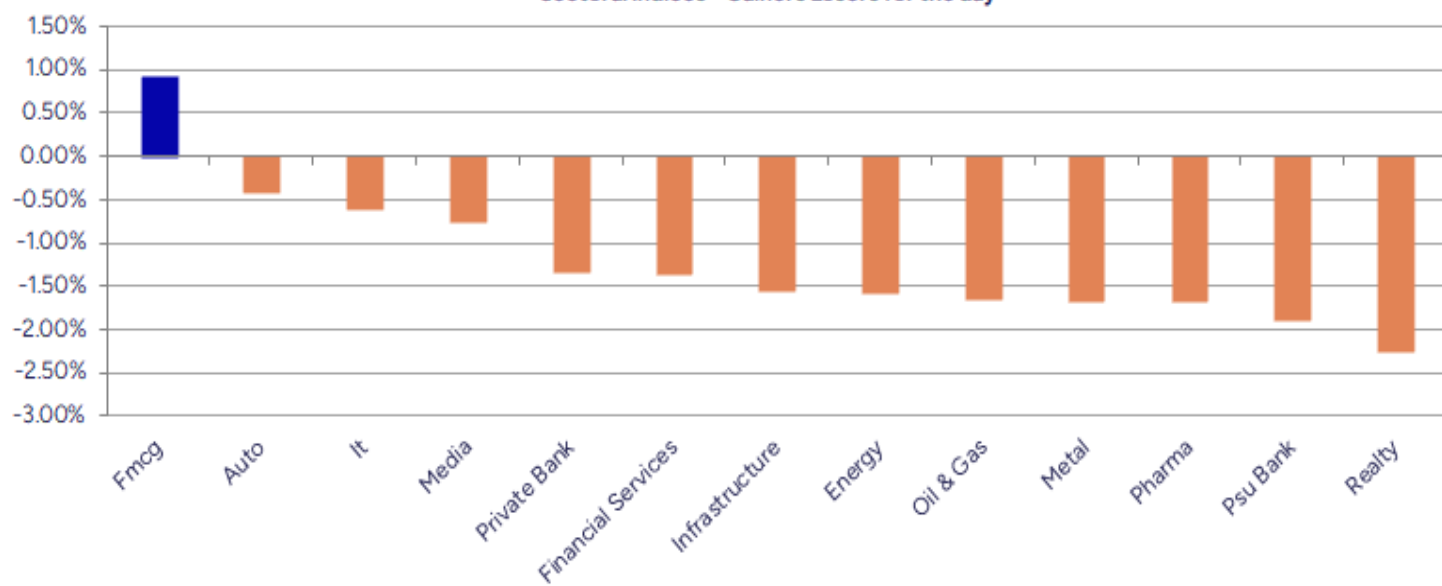
Breakouts - Cross above 200 DMA			
Company Name	LCP	Change %	200 DMA
Rattanindia Ent	58.2	7.34	54.22
S H Kelkar	240.65	5.97	227.1
Cool Caps	84.65	5.73	80.06
INFOLLION	473.95	5.25	450.29
Jeyyam Global F	45.2	4.73	43.16
Timescan Logist	65.6	4.14	62.99
Summit Sec	2340.8	3.84	2254.25
Edelweiss	107.92	3.44	104.33
KCK Industries	49.3	3.31	47.72
Welspun Invest	929.8	2.51	907.06
Devyani	174.09	2.45	169.92
Magson Retail	113.4	2.41	110.73
Ashiana Housing	322.95	2.27	315.78
Innomet Advance	169.5	2.11	166
Incredible Ind	41.5	1.19	41.01
Steel Str Wheel	214.21	0.89	212.31
The Grob Tea	1059.3	0.87	1050.15
Orient Bell	290.35	0.82	287.99

* Stocks crossing above its Simple Moving Average (200DMA)

Breakdown - Cross below 200 DMA			
Company Name	LCP	Change %	200 DMA
Diensten Tech	139.05	-5.45	147.07
Ceat	3039.3	-4.46	3181.14
KPR Mill	980	-3.92	1020.02
Pearl Global In	1277.9	-3.92	1330
Ganesh Green	419.55	-3.80	436.13
Redington	233.5	-3.78	242.67
Star Paper	176.35	-3.73	183.19
Touchwood Enter	104.72	-3.72	108.77
Religare Enterp	237.7	-3.61	246.6
Airo Lam	105.95	-3.49	109.78
Kalana Ispat	40.65	-3.49	42.12
Vedanta	428.2	-3.43	443.41
CSL Fin	292.75	-3.42	303.13
Aban Offshore	47.92	-3.31	49.56
Reliance Power	44.73	-3.24	46.23
Happy Forgings	910.15	-3.13	939.51
Medicamen Organ	39.5	-3.00	40.72
MMP Industries	274.15	-2.66	281.65

* Stocks crossing below its Simple Moving Average (200DMA)

Sectoral Indices - Gainers Losers for the day



Stocks witnessing a volume surge as compared to their 5 day average volur

Watch out for the stocks that have seen a huge spurt in its share price over the last three days

Volume Shockers - NSE					
Company name	LCP	% Chg	Volume	Avg Vol *	% Chg
KSB Pumps	841.9	4.38	7068241	49589	14154
Vibhor Steel	165.98	6.37	755055	12106	6137
Elgi Rubber	63.3	19.23	1049360	24780	4135
Veranda Learnin	232.7	0.1	8734229	210142	4056
KCK Industries	49.25	10.06	542500	13600	3889
Hitachi Energy	19880	2.21	849050	21966	3765
Cool Caps	85.2	10.72	312500	8400	3620
Eleganz Interio	136.8	6.13	156000	4600	3291
Rattanindia Ent	57.28	8.44	88121880	2740446	3116
Summit Sec	2335.5	7.66	367441	11472	3103
Krishival Foods	451.5	4.94	30698	1200	2458
SPL Industries	41.32	2.97	152331	6904	2107
Reliable Data S	136.08	20	1984490	118133	1580
Gujarat Apollo	507.1	4.59	1821077	117185	1454
Xtglobal	34.69	8.68	378520	27577	1273
S H Kelkar	239.4	5.86	7613341	556584	1268
Pashupati Cotsp	681.2	-0.17	63392	4640	1266
Jeena Sikho	695.5	-2.86	247492	18612	1230
HOV Services	77.97	5	102741	7805	1216
BLS Internation	373.8	1.36	12619806	967334	1205

* the Average Volume of last 5 days

Price Shockers - NSE				
Company name	LCP	Prv Close	% Chg	Volume
TVS Motor	3272.3	658.92	396.62	1060758
Reliable Data S	135.47	94.5	43.35	1991140
Shri Rama Multi	52.2	42.32	23.35	7710395
Andhra Cement	88.74	73.35	20.98	457787
Andhra Cement	88.74	73.35	20.98	457787
IZMO	700.05	587.55	19.15	3168397
Sellowrap Indus	121.75	104	17.07	152000
Kabra Extrusion	287.2	247.6	15.99	614222
Edelweiss	107.92	93.86	14.98	46647527
eClerx Services	4454.9	3897.5	14.3	717753
Shri Ahimsa	225.25	199.75	12.77	200400
Emami Paper	108.51	97.1	11.75	1471251
Elgi Rubber	63.31	56.82	11.42	1196592
Summit Sec	2340.8	2101.9	11.37	395022
Rattanindia Ent	58.2	52.66	10.52	100850260
Kolte-Patil	460.3	417.15	10.34	898926
NR Agarwal	408.5	370.55	10.24	12305
Electrotherm	861.7	781.65	10.24	27777
Atlas Cycles	131.13	118.95	10.24	19777
HOV Services	77.97	70.73	10.24	102981

* the % price rise of the last 3 days

Nifty 50 stocks - Summary Details											
Symbol	LTP	Chng	% Chng	Volume (lacs)	Turnover (crs.)	52w High	Diff with 52w H	52w Low	Diff with 52w L	365 days % chng	30 days % chng
NIFTY 50	24712.05	-255.70	-1.02%	7504.74	47068.04	26277.35	5.96%	21743.65	13.65%	0.53%	0.58%
ADANIENT	2286.00	-16.90	-0.73%	10.72	243.42	3211.00	28.81%	2025.00	12.89%	-9.69%	-25.14%
ADANIPTS	1313.40	-27.00	-2.01%	16.52	218.40	1499.50	12.41%	995.65	31.91%	-4.00%	-10.12%
APOLLOHOSP	7756.00	-95.00	-1.21%	6.72	522.53	7980.00	2.81%	6001.00	29.25%	5.12%	14.43%
ASIANPAINT	2493.00	0.10	#VALUE!	71.06	1764.90	3394.90	26.57%	2124.75	17.33%	6.71%	-20.98%
AXISBANK	1051.00	-19.00	-1.78%	71.98	758.83	1281.65	18.00%	933.50	12.59%	-1.48%	-8.23%
BAJAJ-AUTO	8676.00	-74.50	-0.85%	7.78	679.82	12774.00	32.08%	7089.35	22.38%	8.36%	-15.91%
BAJAJFINSV	1921.00	-42.80	-2.18%	11.80	228.08	2135.00	10.02%	1551.65	23.80%	-1.11%	19.75%
BAJFINANCE	876.00	-24.80	-2.75%	67.13	592.37	978.80	10.50%	645.10	35.79%	-1.42%	-86.63%
BEL	367.00	-5.05	-1.36%	157.19	576.11	436.00	15.83%	240.25	52.76%	-5.86%	21.58%
BHARTIARTL	1903.70	-27.00	-1.40%	59.85	1141.81	2045.80	6.95%	1502.00	26.74%	-0.37%	28.14%
CIPLA	1576.60	-24.60	-1.54%	23.32	369.19	1702.05	7.37%	1335.00	18.10%	4.48%	1.69%
COALINDIA	372.15	-7.85	-2.07%	63.82	238.60	543.55	31.53%	349.25	6.56%	-0.21%	-29.48%
DRREDDY	1261.10	-22.80	-1.78%	27.98	353.75	1414.99	10.88%	1020.00	23.64%	0.47%	-81.54%
EICHERMOT	6151.00	160.50	2.68%	14.75	903.00	6210.00	0.95%	4508.75	36.42%	10.26%	22.30%
GRASIM	2800.00	-11.40	-0.41%	4.26	119.12	2898.40	3.39%	2276.95	22.97%	3.80%	2.29%
HCLTECH	1489.30	-14.90	-0.99%	40.92	611.88	2012.20	25.99%	1302.75	14.32%	0.95%	-9.46%
HDFCBANK	972.30	-9.80	-1.00%	169.18	1646.54	1018.85	4.57%	806.50	20.56%	-2.02%	20.86%
HDFCLIFE	773.80	-13.20	-1.68%	50.54	392.68	820.75	5.72%	584.30	32.43%	3.23%	7.96%
HEROMOTOCO	5074.90	11.10	0.22%	16.62	846.28	6246.25	18.75%	3344.00	51.76%	19.69%	-5.96%
HINDALCO	704.00	-11.85	-1.66%	52.29	369.26	772.65	8.89%	546.45	28.83%	3.23%	4.49%
HINDUNILVR	2692.70	61.10	2.32%	43.49	1167.43	3035.00	11.28%	2136.00	26.06%	8.95%	-6.54%
ICICIBANK	1415.00	-18.20	-1.27%	87.20	1236.06	1500.00	5.67%	1186.00	19.31%	-2.97%	19.09%
INDUSINDBK	758.35	-12.50	-1.62%	33.06	250.68	1498.00	49.38%	606.00	25.14%	-6.42%	-44.49%
INFY	1525.80	-6.30	-0.41%	159.95	2445.12	2006.45	23.96%	1307.00	16.74%	1.08%	-17.72%
ITC	403.35	4.00	1.00%	137.16	551.77	528.50	23.68%	390.15	3.38%	-2.45%	-21.05%
JIOFIN	315.75	-3.95	-1.24%	100.77	318.65	363.00	13.02%	198.65	58.95%	2.71%	-2.28%
JSWSTEEL	1046.70	-11.10	-1.05%	17.58	184.47	1089.20	3.90%	880.00	18.94%	3.01%	12.41%
KOTAKBANK	1966.00	-17.30	-0.87%	37.10	730.05	2301.90	14.59%	1679.05	17.09%	-6.65%	9.09%
LT	3552.00	-51.10	-1.42%	17.87	635.91	3963.50	10.38%	2965.30	19.79%	4.65%	0.13%
M&M	3340.00	-58.90	-1.73%	31.22	1047.37	3432.00	2.68%	2425.00	37.73%	4.70%	23.19%
MARUTI	14720.00	268.00	1.85%	9.63	1412.63	14825.00	0.71%	10725.00	37.25%	16.51%	17.47%
NESTLEIND	1159.20	6.20	0.54%	36.20	422.39	1389.00	16.54%	1055.00	9.88%	-49.31%	-54.41%
NTPC	333.00	-4.85	-1.44%	131.13	438.68	448.45	25.74%	292.80	13.73%	1.40%	-15.95%
ONGC	234.30	-2.46	-1.04%	146.72	344.38	334.40	29.93%	205.00	14.29%	-1.47%	-25.76%
POWERGRID	281.00	-3.15	-1.11%	229.06	642.24	366.25	23.28%	247.30	13.63%	-2.72%	-15.49%
RELIANCE	1383.80	-28.80	-2.04%	121.45	1689.13	1551.00	10.78%	1114.85	24.12%	1.50%	-52.91%
SBILIFE	1816.90	-29.90	-1.62%	6.70	122.14	1936.00	6.15%	1372.55	32.37%	0.80%	3.21%
SBIN	808.40	-8.05	-0.99%	69.98	567.03	875.45	7.66%	680.00	18.88%	1.23%	0.13%
SHRIRAMFIN	595.85	-25.00	-4.03%	180.49	1083.20	730.45	18.43%	493.35	20.78%	0.81%	-80.14%
SUNPHARMA	1601.20	-55.50	-3.35%	45.02	724.81	1960.35	18.32%	1553.05	3.10%	-2.49%	-6.70%
TATACONSUM	1081.30	-0.30	-0.03%	12.01	129.98	1234.30	12.40%	882.90	22.47%	2.58%	-9.63%
TATAMOTORS	680.55	-6.25	-0.91%	74.97	510.93	1142.00	40.41%	535.75	27.03%	-0.09%	-36.71%
TATASTEEL	155.05	-4.58	-2.87%	196.21	306.15	170.18	8.89%	122.62	26.45%	-1.12%	3.52%
TCS	3157.00	16.40	0.52%	55.22	1740.79	4592.25	31.25%	2991.60	5.53%	0.15%	-29.64%
TECHM	1504.60	-22.50	-1.47%	15.11	227.84	1807.70	16.77%	1209.40	24.41%	4.46%	-4.46%
TITAN	3599.00	-52.40	-1.44%	9.61	347.73	3867.00	6.93%	2925.00	23.04%	5.45%	2.28%
TRENT	5290.00	-133.00	-2.45%	9.50	505.60	8345.00	36.61%	4488.00	17.87%	7.54%	-21.96%
ULTRACEMCO	12604.00	-2.00	-0.02%	2.90	366.85	12930.00	2.52%	10047.85	25.44%	2.91%	11.15%
WIPRO	251.75	-2.09	-0.82%	157.97	398.79	324.60	22.44%	228.00	10.42%	-2.07%	-50.46%
ETERNAL	320.75	1.50	0.47%	4385.03	13942.64	331.35	3.20%	194.80	64.66%	2.80%	#VALUE!

Disclaimer / Disclosures

ANALYST CERTIFICATION

I, Mrs. Vaishali Parekh B.com, Research Analyst, author and the name subscribed to this report, hereby certify that all of the views expressed in this research report accurately reflect our views about the subject issuer(s) or securities. We also certify that no part of our compensation was, is, or will be directly or indirectly related to the specific recommendation(s) or view(s) in this report.

Terms & conditions and other disclosures:

Prabhudas Lilladher Pvt. Ltd, Mumbai, India (hereinafter referred to as "PL") is engaged in the business of Stock Broking, Portfolio Manager, Depository Participant and distribution for third party financial products. PL is a subsidiary of Prabhudas Lilladher Advisory Services Pvt Ltd. which has its various subsidiaries engaged in business of commodity broking, investment banking, financial services (margin funding) and distribution of third party financial/other products, details in respect of which are available at www.plindia.com

This document has been prepared by the Research Division of PL and is meant for use by the recipient only as information and is not for circulation. This document is not to be reported or copied or made available to others without prior permission of PL. It should not be considered or taken as an offer to sell or a solicitation to buy or sell any security.

The information contained in this report has been obtained from sources that are considered to be reliable. However, PL has not independently verified the accuracy or completeness of the same. Neither PL nor any of its affiliates, its directors or its employees accepts any responsibility of whatsoever nature for the information, statements and opinion given, made available or expressed herein or for any omission therein.

Recipients of this report should be aware that past performance is not necessarily a guide to future performance and value of investments can go down as well. The suitability or otherwise of any investments will depend upon the recipient's particular circumstances and, in case of doubt, advice should be sought from an independent expert/advisor.

Either PL or its affiliates or its directors or its employees or its representatives or its clients or their relatives may have position(s), make market, act as principal or engage in transactions of securities of companies referred to in this report and they may have used the research material prior to publication.

PL may from time to time solicit or perform investment banking or other services for any company mentioned in this document.

PL is registered as Research Analyst under Securities and Exchange Board of India (Research Analysts) Regulations, 2014 PL submits that no material disciplinary action has been taken on us by any Regulatory Authority impacting Equity Research Analysis activities.

PL or its research analysts or its associates or his relatives do not have any financial interest in the subject company.

PL or its research analysts or its associates or his relatives do not have actual/beneficial ownership of one per cent or more securities of the subject company at the end of the month immediately preceding the date of publication of the research report.

PL or its research analysts or its associates or his relatives do not have any material conflict of interest at the time of publication of the research report.

PL or its associates might have received compensation from the subject company in the past twelve months.

PL or its associates might have managed or co-managed public offering of securities for the subject company in the past twelve months or mandated by the subject company for any other assignment in the past twelve months.

PL or its associates might have received any compensation for investment banking or merchant banking or brokerage services from the subject company in the past twelve months.

PL or its associates might have received any compensation for products or services other than investment banking or merchant banking or brokerage services from the subject company in the past twelve months PL or its associates might have received any compensation or other benefits from the subject company or third party in connection with the research report.

PL encourages independence in research report preparation and strives to minimize conflict in preparation of research report. PL or its analysts did not receive any compensation or other benefits from the subject Company or third party in connection with the preparation of the research report. PL or its Research Analysts do not have any material conflict of interest at the time of publication of this report.

It is confirmed that Mrs.Vaishali Parekh B.com, Research Analyst of this report has not received any compensation from the companies mentioned in the report in the preceding twelve months compensation of our Research Analysts is not based on any specific merchant banking, investment banking or brokerage service transactions.

The Research analysts for this report certifies that all of the views expressed in this report accurately reflect his or her personal views about the subject company or companies and its or their securities, and no part of his or her compensation was, is or will be, directly or indirectly related to specific recommendations or views expressed in this report.

The research analysts for this report has not served as an officer, director or employee of the subject company PL or its research analysts have not engaged in market making activity for the subject company

Our sales people, traders, and other professionals or affiliates may provide oral or written market commentary or trading strategies to our clients that reflect opinions that are contrary to the opinions expressed herein, and our proprietary trading and investing businesses may make investment decisions that are inconsistent with the recommendations expressed herein. In reviewing these materials, you should be aware that any or all of the foregoing, among other things, may give rise to real or potential conflicts of interest.

PL and its associates, their directors and employees may (a) from time to time, have a long or short position in, and buy or sell the securities of the subject company or (b) be engaged in any other transaction involving such securities and earn brokerage or other compensation or act as a market maker in the financial instruments of the subject company or act as an advisor or lender/borrower to the subject company or may have any other potential conflict of interests with respect to any recommendation and other related information and opinions.