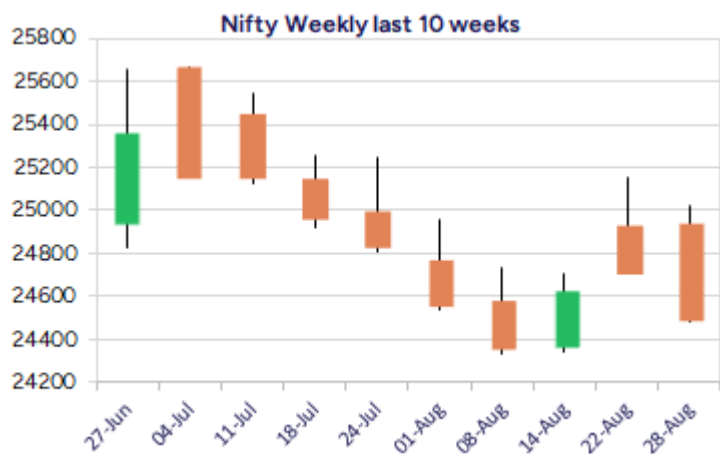
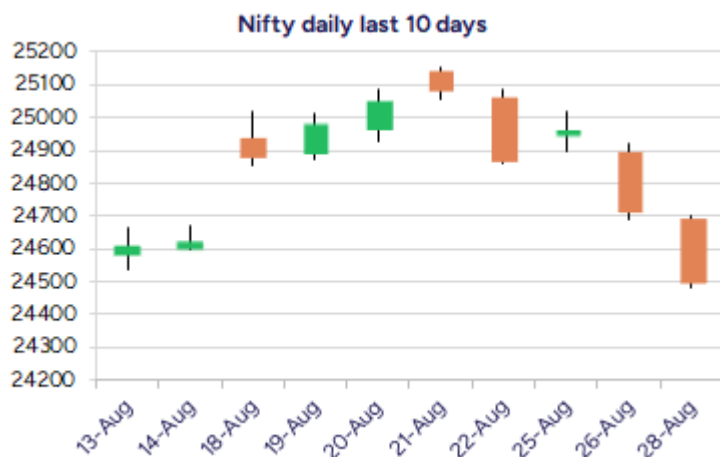


Date: 29th August 2025

* Sensex 80080.57 - 705.97

* Nifty 24500.90 - 211.15

* Bank Nifty 53820.35 - 630.10



*Blue candle → Close rate > Open rate * Red candle → Close rate < Open rate

Market Preview

Nifty ends at 24500 zone; bias turns weak

Nifty continued with the losing streak for the 2nd consecutive sessions with two huge bearish candle formation turning the bias weak and is currently precariously placed at 24500 zone. BankNifty extended the losses further losing 630 points with the bias maintained with a very cautious approach. The market breadth was weak with the advance decline indicating a ratio of 1:2 at close.

Market Forecast

Nifty daily range 24350 - 24700

Nifty extended the losses with another big bearish candle to plunge more than 200 points closing at the crucial and important support zone of 24500 level and is precariously placed with bias and sentiment turning weak. The bias is very much maintained with a cautious approach and as mentioned earlier, technically, the index breaching the 24500 level decisively would have the next major support near the significant 200 period SMA at 24000 zone which needs to be sustained.

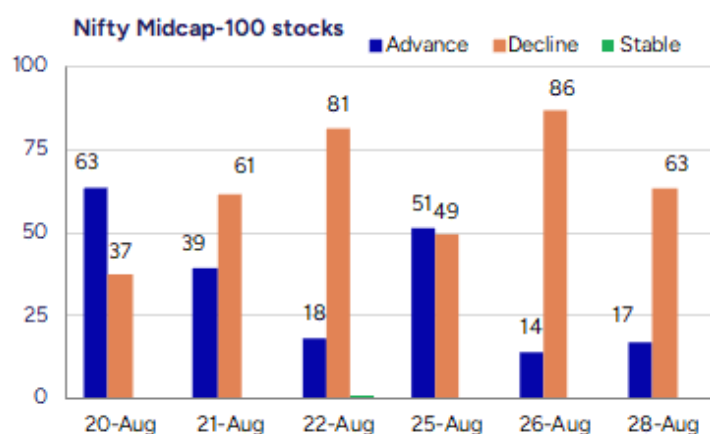
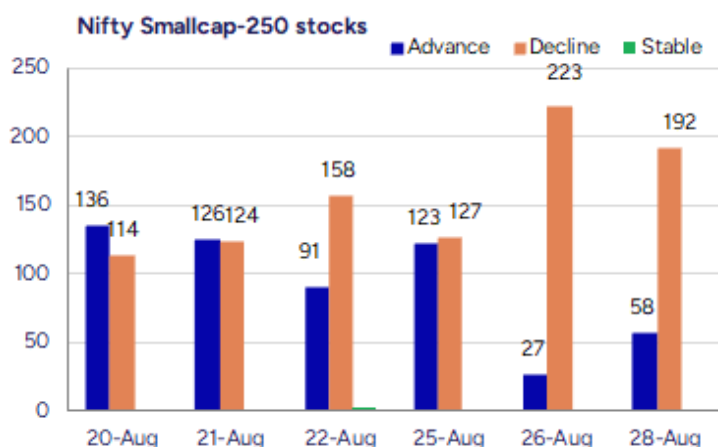
BankNifty plunged further to break the 54000 level with bias turning very weak losing almost 2000 points from near the 50EMA level at 55700 in the last 4 sessions and is precariously placed as of now. The index has got the next major support near the significant 200 period SMA at 52900 level which needs to be sustained to maintain the overall trend intact and anticipate for a revival in the coming days.

The support for the day is seen at 24350 levels, while the resistance is seen at 24700 levels. BankNifty would have the daily range of 53400-54400 levels.

Indices	Period	Closing	% Chng	Trend	Reversal	2 Sup	1 Sup	Pivot	1 Res	2 Res
Nifty	Daily	24500.90	-0.85%	-2	24892.15	24341	24421	24562	24642	24783
	Weekly	24870.10	0.97%	-7	24803.40	24660	24765	24958	25063	25256
	Monthly	24768.35	-2.93%	3	24708.35	23999	24384	24994	25379	25990
Bank Nifty	Daily	53820.35	-1.16%	-4	54682.85	53377	53598	53990	54212	54604
	Weekly	55149.40	-0.35%	-7	56036.20	54423	54786	55471	55834	56519
	Monthly	55961.95	-2.36%	4	55173.20	54361	55162	56360	57160	58359
Sensex	Daily	80080.57	-0.87%	-2	81291.25	79527	79804	80290	80567	81052
	Weekly	81306.85	0.88%	-7	81196.40	80556	80931	81578	81954	82601
	Monthly	81185.58	-2.90%	-1	81149.00	78601	79893	81912	83205	85224

Gainers - Losers (Nifty 500 Stocks)

Gainers				Losers			
Company Name	Last Price	% Gain	Volume	Company Name	Last Price	% Loss	Volume
Crayons Advert	54.95	19.98	88000	Gem Aromatics	290.9	-8.82	2419453
Jeyyam Global F	54	19.47	750000	Suntech Infra	66.3	-8.43	96000
GSS Infotech	32.8	15.86	3667167	Univastu India	251.15	-8.31	339477
Vardhman Text	450.2	13.03	25665975	Fiberweb India	44.1	-8.22	216970
Yash Optics	129.9	12.96	576000	Aaron Industrie	200.6	-7.83	85601
Elgi Rubber	71.37	12.73	1401241	Rockingdeals	210.65	-7.24	750
Indbank Merchan	35.73	12.36	733100	Happy Square	76.2	-7.07	22400



Nifty Daily chart with RSI indicator



BankNifty Daily chart with RSI indicator



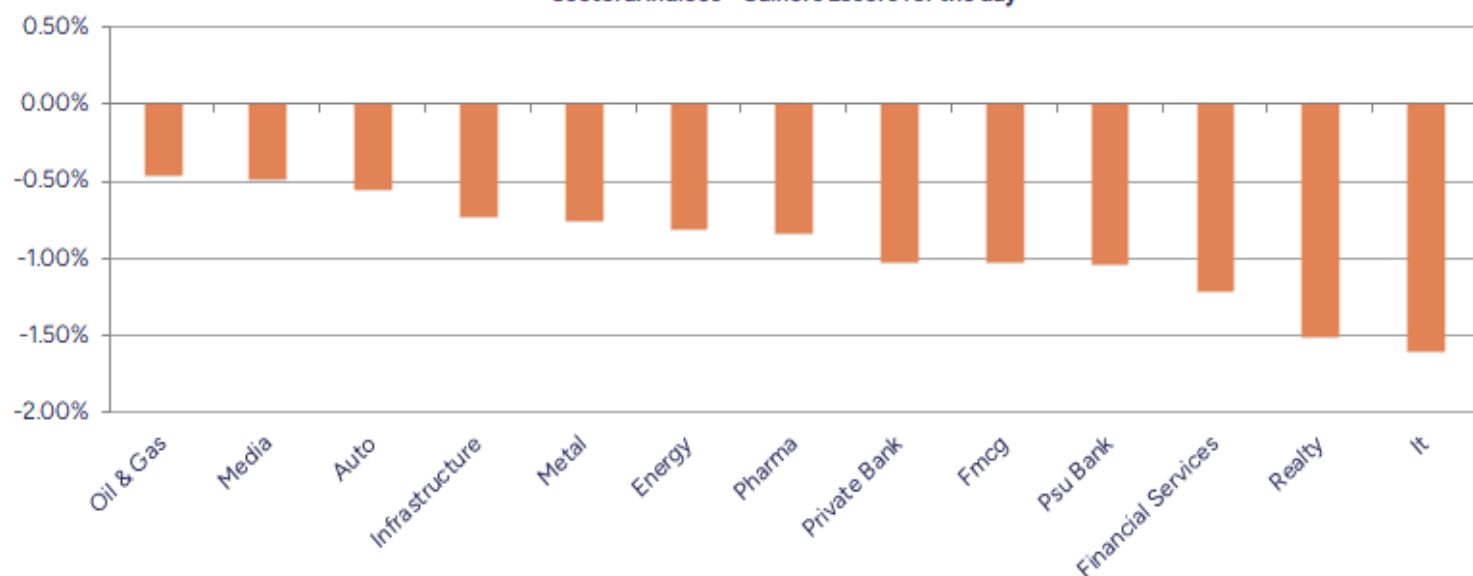
Breakouts - Cross above 200 DMA			
Company Name	LCP	Change %	200 DMA
Thirumalai Chem	297	4.88	283.19
Uttam Sugar	276.05	4.02	265.39
Supreme Infra	115.75	3.86	111.45
Gloster	676.5	3.38	654.37
Rubfila Intl	78.9	3.10	76.53
Caplin Labs	2156.2	3.01	2093.12
Rattan Power	12.42	2.56	12.11
Honeywell Autom	39015	2.32	38130.44
Restaurant Bran	79.82	2.24	78.07
Inspirsys Solu	99.97	1.51	98.48
Cinevista	17.22	1.23	17.01
AB Money	182.22	1.00	180.42
Delta	87.43	0.94	86.62
Tokyo Plast	126.74	0.78	125.76
Blue Star	1880.5	0.74	1866.61
Max India	220.48	0.66	219.04
Yasho Ind.	1892.6	0.63	1880.81
Sundram	1020.3	0.57	1014.5

* Stocks crossing above its Simple Moving Average (200DMA)

Breakdown - Cross below 200 DMA			
Company Name	LCP	Change %	200 DMA
Barak Vally Cem	40.55	-5.08	42.72
Windsor	317.75	-4.27	331.92
Rajgor Castor	22.9	-4.26	23.92
NLC India	227.7	-3.16	235.13
Tolins Tyres	152.68	-3.08	157.54
Arihant Super	400.1	-3.02	412.54
Page Industries	44150	-2.93	45482.56
The Grob Tea	1020	-2.86	1050.02
SJVN	96.17	-2.73	98.87
Va Tech Wabag	1475.5	-2.47	1512.92
Swelect Energy	715	-2.46	733.05
Lead Reclaim	78.9	-2.38	80.82
Shivalik Bimeta	501	-2.36	513.13
Sanghi Ind	62.6	-2.31	64.08
Century Extr	20.87	-2.20	21.34
360 ONE WAM	1041.9	-2.15	1064.77
Sundaram Fin	4625.4	-2.07	4723.41
Incredible Ind	40.16	-2.07	41.01

* Stocks crossing below its Simple Moving Average (200DMA)

Sectoral Indices - Gainers Losers for the day



Stocks witnessing a volume surge as compared to their 5 day average volume

Watch out for the stocks that have seen a huge spurt in its share price over the last three days

Volume Shockers - NSE					
Company name	LCP	% Chg	Volume	Avg Vol	* % Chg
JTEKT India	134.01	3	202554	10094	20649182
Elgi Rubber	71.37	12.73	24780	5555	1401241
GSS Infotech	32.8	15.86	70923	5071	3667167
SMS Pharma	225.77	-2.44	38792	4790	1897046
Indbank Merchan	35.73	12.36	17957	3983	733100
Advanced Enzyme	324.15	7.39	189638	3429	6691590
KCK Industries	48.65	-1.32	13600	3264	457500
Interglobe Avi	5727	-5.34	553141	3263	18603169
Rattanindia Ent	60.58	4.09	2740446	2939	33288347
Rushil Decor	25.83	12.16	366723	1936	7466968
Pashupati Cotsp	673.35	-0.84	4640	1930	94185
AksharChem	290.65	5.4	5258	1806	100216
BEW Engineering	158.35	-0.09	1125	1633	19500
Ester Ind	111.09	3.54	68341	1452	1060604
Vishnusurya Pro	178.7	6.59	9500	1421	144500
Vardhman Text	450.2	13.03	1694684	1414	25665975
Eleganz Interio	135.8	-0.11	4600	1335	66000
Sangam India	372.6	7.91	17657	1290	245390
Krishival Foods	454.65	0.9	1200	1182	15378
Marvel Decor Lt	81.75	-6.03	3600	1122	44000

* the Average Volume of last 5 days

Price Shockers - NSE				
Company name	LCP	Prv Close	% Chg	Volume
TVS Motor	3256	658.92	394.14	856253
Reliable Data S	149.01	94.5	57.68	664894
Elgi Rubber	71.37	56.82	25.61	1401241
Sellowrap Indus	130.5	104	25.48	161600
Shri Rama Multi	52.42	42.32	23.87	1377483
IZMO	706.05	587.55	20.17	1704446
Edelweiss	110.66	93.86	17.9	31296508
Crayons Advert	54.95	46.8	17.41	88000
Ola Electric	54.84	47.19	16.21	779032704
Kabra Extrusion	286.85	247.6	15.85	164491
NR Agarwal	428.9	370.55	15.75	6484
Osia Hyper Reta	16.67	14.41	15.68	134747
Flexituff Ventu	24.43	21.12	15.67	12918
Tamil Telecom	17.05	14.74	15.67	30589
Andhra Cement	84.53	73.35	15.24	385405
Rattanindia Ent	60.58	52.66	15.04	83288347
GSS Infotech	32.8	28.98	13.18	3667167
Kolte-Patil	469.7	417.15	12.6	333794
Electrotherm	876.15	781.65	12.09	45478
Lotus Eye Care	109.22	97.83	11.64	321245

* the % price rise of the last 3 days

Nifty 50 stocks - Summary Details											
Symbol	LTP	Chng	% Chng	Volume (lacs)	Turnover (crs.)	52w High	Diff with 52w H	52w Low	Diff with 52w L	365 days % chng	30 days % chng
NIFTY 50	24500.90	-211.15	-0.85%	3264.96	29362.52	26277.35	6.76%	21743.65	12.68%	0.13%	-1.22%
ADANIENT	2282.10	10.10	0.44%	9.08	208.34	3211.00	28.93%	2025.00	12.70%	-9.92%	-25.92%
ADANIPTS	1317.50	2.10	0.16%	17.85	236.17	1499.50	12.14%	995.65	32.33%	-4.40%	-11.02%
APOLLOHOSP	7725.50	-68.00	-0.87%	4.18	324.94	7980.00	3.19%	6001.00	28.74%	5.94%	14.92%
ASIANPAINT	2490.00	8.60	0.35%	14.86	372.30	3394.90	26.65%	2124.75	17.19%	5.16%	-21.63%
AXISBANK	1055.60	5.50	0.52%	85.64	900.10	1281.65	17.64%	933.50	13.08%	-2.19%	-11.10%
BAJAJ-AUTO	8694.00	2.50	0.03%	3.95	343.71	12774.00	31.94%	7089.35	22.63%	7.44%	-17.24%
BAJAJFINSV	1917.00	-7.20	-0.37%	9.85	189.72	2135.00	10.21%	1551.65	23.55%	-2.71%	11.94%
BAJFINANCE	878.10	1.85	0.21%	83.45	733.31	978.80	10.29%	645.10	36.12%	-0.48%	-87.23%
BEL	363.30	-2.55	-0.70%	122.16	445.69	436.00	16.67%	240.25	51.22%	-6.01%	21.59%
BHARTIARTL	1888.00	-16.70	-0.88%	54.94	1037.26	2045.80	7.71%	1502.00	25.70%	0.76%	25.08%
CIPLA	1580.00	0.20	0.01%	19.03	300.67	1702.05	7.17%	1335.00	18.35%	0.50%	-1.14%
COALINDIA	375.00	2.55	0.68%	43.58	162.84	543.55	31.01%	349.25	7.37%	-1.56%	-29.91%
DRREDDY	1263.80	0.60	0.05%	18.28	229.73	1414.99	10.68%	1020.00	23.90%	-1.88%	-81.86%
EICHERMOT	6140.00	-11.00	-0.18%	7.19	444.11	6269.50	2.07%	4508.75	36.18%	14.20%	26.33%
GRASIM	2789.80	-6.40	-0.23%	5.28	147.43	2898.40	3.75%	2276.95	22.52%	2.53%	3.57%
HCLTECH	1450.20	-42.60	-2.85%	43.67	636.42	2012.20	27.93%	1302.75	11.32%	1.82%	-12.78%
HDFCBANK	961.80	-11.60	-1.19%	254.37	2447.22	1018.85	5.60%	806.50	19.26%	-51.54%	-40.56%
HDFCLIFE	774.60	-2.00	-0.26%	28.92	225.36	820.75	5.62%	584.30	32.57%	2.02%	5.01%
HEROMOTOCO	5106.60	33.20	0.65%	15.84	814.95	6246.25	18.25%	3344.00	52.71%	18.23%	-5.29%
HINDALCO	699.65	-6.05	-0.86%	56.21	395.04	772.65	9.45%	546.45	28.04%	2.37%	0.31%
HINDUNILVR	2653.80	-38.80	-1.44%	31.98	856.38	3035.00	12.56%	2136.00	24.24%	10.28%	-2.69%
ICICIBANK	1397.60	-19.00	-1.34%	129.90	1822.52	1500.00	6.83%	1186.00	17.84%	-4.82%	15.51%
INDUSINDBK	748.00	-8.40	-1.11%	30.85	231.58	1498.00	50.07%	606.00	23.43%	-5.69%	-45.32%
INFY	1503.00	-26.60	-1.74%	54.43	819.48	2006.45	25.09%	1307.00	15.00%	0.90%	-19.50%
ITC	400.80	-2.55	-0.63%	124.70	500.55	528.50	24.16%	390.15	2.73%	-1.60%	-19.43%
JIOFIN	311.25	-4.50	-1.43%	152.37	475.90	363.00	14.26%	198.65	56.68%	2.73%	-2.43%
JSWSTEEL	1041.30	-5.80	-0.55%	13.13	136.87	1089.20	4.40%	880.00	18.33%	1.78%	10.92%
KOTAKBANK	1947.90	-17.80	-0.91%	35.98	701.97	2301.90	15.38%	1679.05	16.01%	-0.05%	9.00%
LT	3564.10	22.80	0.64%	16.95	603.38	3963.50	10.08%	2965.30	20.19%	3.48%	-4.36%
M&M	3301.00	-29.80	-0.89%	29.36	971.59	3432.00	3.82%	2425.00	36.12%	3.77%	19.78%
MARUTI	14798.00	84.00	0.57%	6.67	982.76	14895.00	0.65%	10725.00	37.98%	19.24%	17.74%
NESTLEIND	1160.70	-1.50	-0.13%	10.66	123.96	1389.00	16.44%	1055.00	10.02%	-47.87%	-53.91%
NTPC	330.90	-2.30	-0.69%	104.84	346.96	448.45	26.21%	292.80	13.01%	0.08%	-18.66%
ONGC	234.17	-0.02	-0.01%	138.69	324.93	334.40	29.97%	205.00	14.23%	-2.43%	-28.79%
POWERGRID	274.20	-5.70	-2.04%	124.46	344.09	366.25	25.13%	247.30	10.88%	-4.11%	-16.53%
RELIANCE	1390.90	6.00	0.43%	131.26	1812.39	1551.00	10.32%	1114.85	24.76%	-0.19%	-53.85%
SBILIFE	1812.90	-3.70	-0.20%	9.48	172.90	1936.00	6.36%	1372.55	32.08%	-1.83%	-1.22%
SBIN	802.90	-4.95	-0.61%	78.97	636.63	875.45	8.29%	680.00	18.07%	1.34%	-0.99%
SHRIRAMFIN	571.25	-23.45	-3.94%	200.22	1156.32	730.45	21.79%	493.35	15.79%	-6.12%	-81.59%
SUNPHARMA	1587.90	-12.40	-0.77%	49.94	789.01	1960.35	19.00%	1553.05	2.24%	-5.99%	-10.57%
TATACONSUM	1060.20	-19.70	-1.82%	6.42	68.48	1234.30	14.11%	882.90	20.08%	1.89%	-10.72%
TATAMOTORS	676.15	-5.50	-0.81%	94.63	637.71	1142.00	40.79%	535.75	26.21%	-0.18%	-36.72%
TATASTEEL	154.17	-0.86	-0.55%	222.65	343.17	170.18	9.41%	122.62	25.73%	-2.91%	0.21%
TCS	3098.00	-59.20	-1.88%	31.16	969.11	4592.25	32.54%	2991.60	3.56%	2.53%	-29.80%
TECHM	1494.40	-7.80	-0.52%	17.72	265.25	1807.70	17.33%	1209.40	23.57%	3.56%	-7.53%
TITAN	3632.00	38.00	1.06%	9.89	358.84	3867.00	6.08%	2925.00	24.17%	5.92%	1.20%
TRENT	5248.50	-46.50	-0.88%	7.84	412.58	8345.00	37.11%	4488.00	16.95%	6.03%	-22.92%
ULTRACEMCO	12555.00	-55.00	-0.44%	2.84	356.67	12930.00	2.90%	10047.85	24.95%	3.02%	11.59%
WIPRO	249.98	-2.05	-0.81%	58.50	146.68	324.60	22.99%	228.00	9.64%	0.79%	-51.27%
ETERNAL	315.95	-1.95	-0.61%	440.17	1398.52	331.35	4.65%	194.80	62.19%	3.45%	#VALUE!

Disclaimer / Disclosures

ANALYST CERTIFICATION

I, Mrs. Vaishali Parekh B.com, Research Analyst, author and the name subscribed to this report, hereby certify that all of the views expressed in this research report accurately reflect our views about the subject issuer(s) or securities. We also certify that no part of our compensation was, is, or will be directly or indirectly related to the specific recommendation(s) or view(s) in this report.

Terms & conditions and other disclosures:

Prabhudas Lilladher Pvt. Ltd, Mumbai, India (hereinafter referred to as "PL") is engaged in the business of Stock Broking, Portfolio Manager, Depository Participant and distribution for third party financial products. PL is a subsidiary of Prabhudas Lilladher Advisory Services Pvt Ltd. which has its various subsidiaries engaged in business of commodity broking, investment banking, financial services (margin funding) and distribution of third party financial/other products, details in respect of which are available at www.plindia.com

This document has been prepared by the Research Division of PL and is meant for use by the recipient only as information and is not for circulation. This document is not to be reported or copied or made available to others without prior permission of PL. It should not be considered or taken as an offer to sell or a solicitation to buy or sell any security.

The information contained in this report has been obtained from sources that are considered to be reliable. However, PL has not independently verified the accuracy or completeness of the same. Neither PL nor any of its affiliates, its directors or its employees accepts any responsibility of whatsoever nature for the information, statements and opinion given, made available or expressed herein or for any omission therein.

Recipients of this report should be aware that past performance is not necessarily a guide to future performance and value of investments can go down as well. The suitability or otherwise of any investments will depend upon the recipient's particular circumstances and, in case of doubt, advice should be sought from an independent expert/advisor.

Either PL or its affiliates or its directors or its employees or its representatives or its clients or their relatives may have position(s), make market, act as principal or engage in transactions of securities of companies referred to in this report and they may have used the research material prior to publication.

PL may from time to time solicit or perform investment banking or other services for any company mentioned in this document.

PL is registered as Research Analyst under Securities and Exchange Board of India (Research Analysts) Regulations, 2014 PL submits that no material disciplinary action has been taken on us by any Regulatory Authority impacting Equity Research Analysis activities.

PL or its research analysts or its associates or his relatives do not have any financial interest in the subject company.

PL or its research analysts or its associates or his relatives do not have actual/beneficial ownership of one per cent or more securities of the subject company at the end of the month immediately preceding the date of publication of the research report.

PL or its research analysts or its associates or his relatives do not have any material conflict of interest at the time of publication of the research report.

PL or its associates might have received compensation from the subject company in the past twelve months.

PL or its associates might have managed or co-managed public offering of securities for the subject company in the past twelve months or mandated by the subject company for any other assignment in the past twelve months.

PL or its associates might have received any compensation for investment banking or merchant banking or brokerage services from the subject company in the past twelve months.

PL or its associates might have received any compensation for products or services other than investment banking or merchant banking or brokerage services from the subject company in the past twelve months PL or its associates might have received any compensation or other benefits from the subject company or third party in connection with the research report.

PL encourages independence in research report preparation and strives to minimize conflict in preparation of research report. PL or its analysts did not receive any compensation or other benefits from the subject Company or third party in connection with the preparation of the research report. PL or its Research Analysts do not have any material conflict of interest at the time of publication of this report.

It is confirmed that Mrs.Vaishali Parekh B.com, Research Analyst of this report has not received any compensation from the companies mentioned in the report in the preceding twelve months compensation of our Research Analysts is not based on any specific merchant banking, investment banking or brokerage service transactions.

The Research analysts for this report certifies that all of the views expressed in this report accurately reflect his or her personal views about the subject company or companies and its or their securities, and no part of his or her compensation was, is or will be, directly or indirectly related to specific recommendations or views expressed in this report.

The research analysts for this report has not served as an officer, director or employee of the subject company PL or its research analysts have not engaged in market making activity for the subject company

Our sales people, traders, and other professionals or affiliates may provide oral or written market commentary or trading strategies to our clients that reflect opinions that are contrary to the opinions expressed herein, and our proprietary trading and investing businesses may make investment decisions that are inconsistent with the recommendations expressed herein. In reviewing these materials, you should be aware that any or all of the foregoing, among other things, may give rise to real or potential conflicts of interest.

PL and its associates, their directors and employees may (a) from time to time, have a long or short position in, and buy or sell the securities of the subject company or (b) be engaged in any other transaction involving such securities and earn brokerage or other compensation or act as a market maker in the financial instruments of the subject company or act as an advisor or lender/borrower to the subject company or may have any other potential conflict of interests with respect to any recommendation and other related information and opinions.