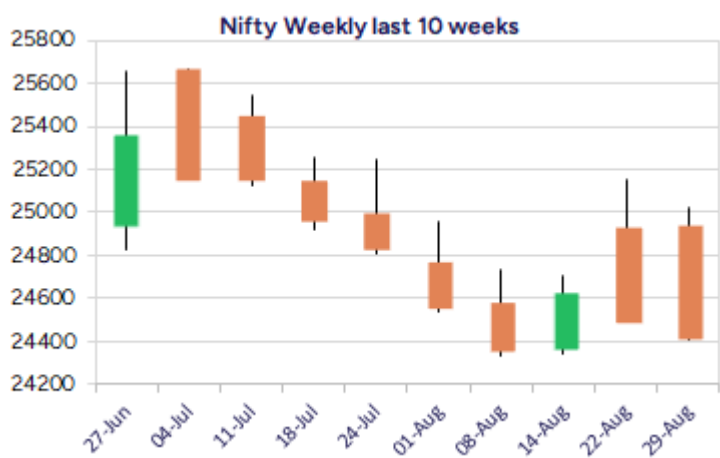
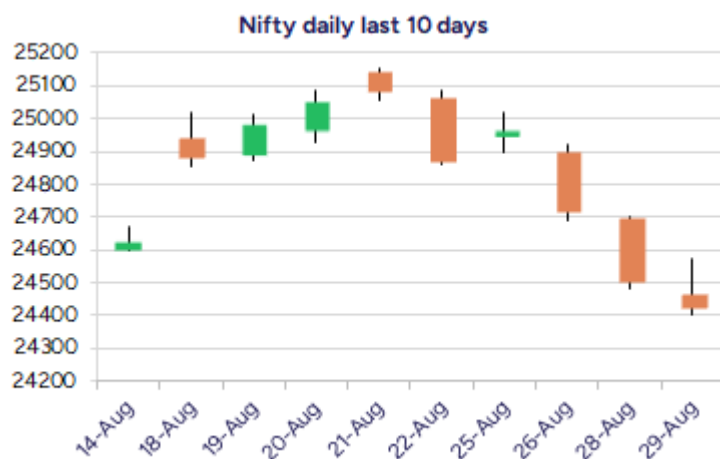


Date: 01<sup>st</sup> September 2025

\* Sensex 79809.65 -270.92

\* Nifty 24426.85 -74.05

\* Bank Nifty 53655.65 -164.70



\*Blue candle → Close rate > Open rate \* Red candle → Close rate < Open rate

## Market Preview

### Nifty breaches below the 24500 zone

Nifty continued with the losing streak breaking below the important 24500 zone with bias and sentiment getting into very cautious mode. BankNifty extended the losses further with most of the frontline banking stocks shedding their gains and has the next important support near the 200 period SMA at 52900 level. The market breadth was weak with the advance decline indicating a ratio of 2:3 at close.

## Market Forecast

### Nifty daily range 24300 - 24600

Nifty amid the weak sentiment slipped below the important 24500 zone with bias getting weaker day by day extending the losses and currently with the Head and Shoulder formation on the daily chart has got the neckline near the 24300 level which shall be a crucial zone that would decide the further course of the market in the coming days. As mentioned earlier, the index would have the next major support near the significant 200 period SMA at 24000 zone which needs to be sustained and, on the upside, only a major move above the 50EMA level at 24800 zone shall improve the bias from current rate.

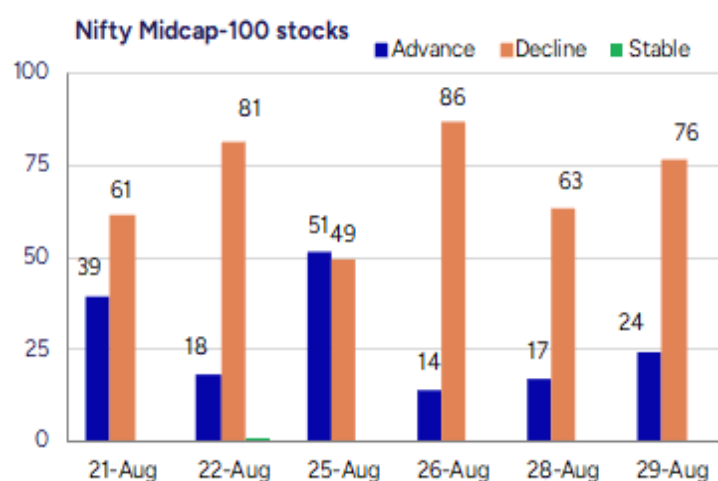
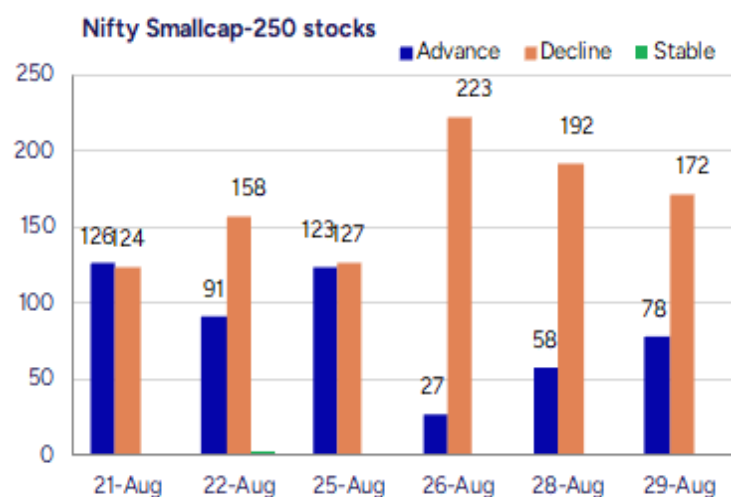
BankNifty ended on the lower end with weak bias failing to find a revival and is precariously placed having got the next major support near the significant 200 period SMA at 52900 level which needs to be sustained to maintain the overall trend intact. On the upside, a decisive move past the 55000 zone is necessary to indicate a recovery and ease out the sentiment.

The support for the day is seen at 24300 levels, while the resistance is seen at 24600 levels. BankNifty would have the daily range of 53200-54200 levels.

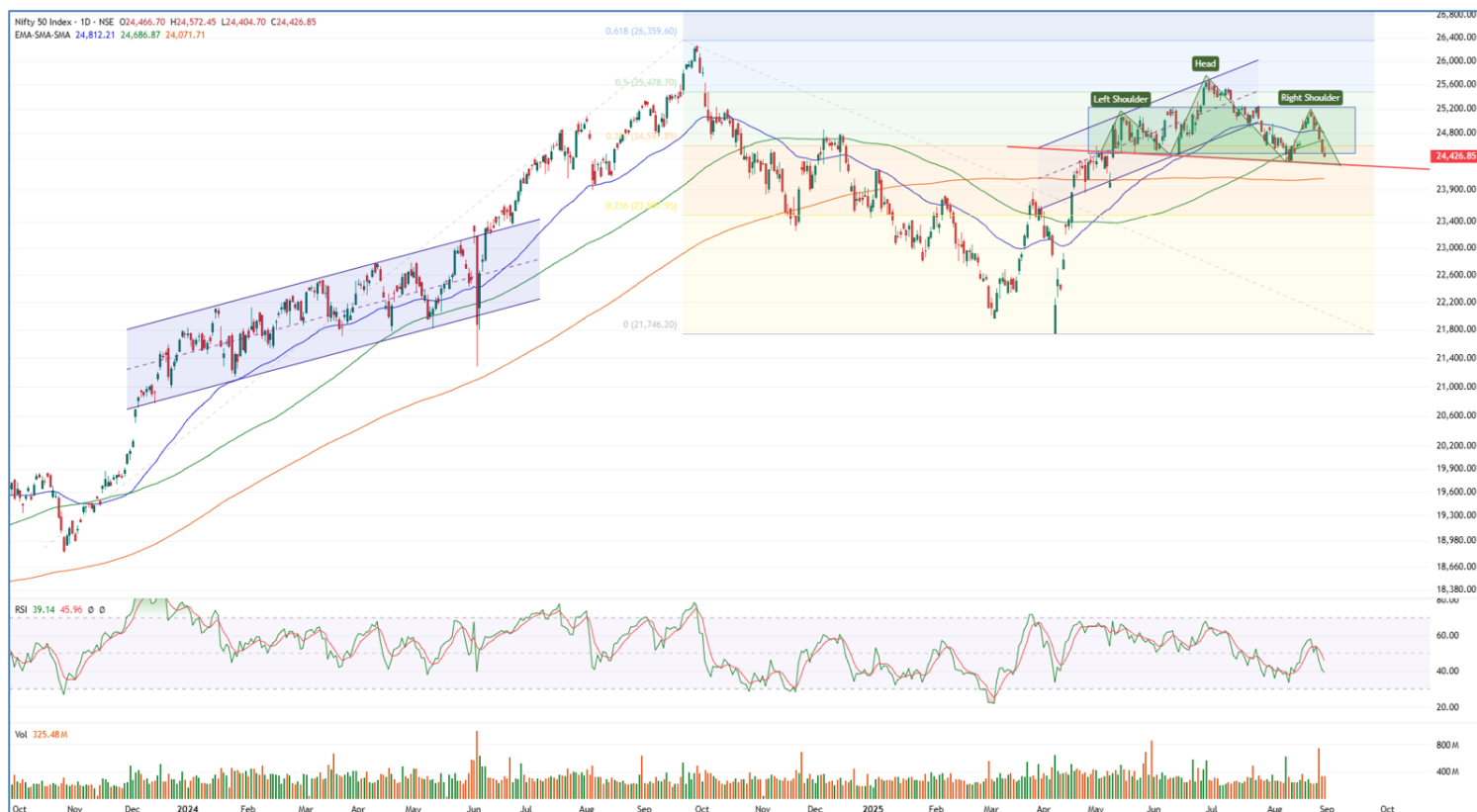
Indices	Period	Closing	% Chng	Trend	Reversal	2 Sup	1 Sup	Pivot	1 Res	2 Res
Nifty	Daily	24426.85	-0.30%	-3	24767.40	24300	24364	24468	24531	24636
	Weekly	24426.85	-1.78%	-8	24714.55	24003	24215	24617	24829	25232
	Monthly	24426.85	-1.38%	-1	24777.20	23826	24126	24639	24939	25452
Bank Nifty	Daily	53655.65	-0.31%	-5	54319.20	53303	53479	53783	53959	54262
	Weekly	53655.65	-2.71%	-8	55700.40	52497	53076	54190	54769	55883
	Monthly	53655.65	-4.12%	-1	56293.50	51929	52792	54474	55337	57019
Sensex	Daily	79809.65	-0.34%	-3	80892.60	79385	79597	79954	80166	80523
	Weekly	79809.65	-1.84%	-8	80839.30	78395	79102	80450	81157	82505
	Monthly	79809.65	-1.69%	-2	81431.75	78110	78960	80593	81443	83075

**Gainers - Losers ( Nifty 500 Stocks )**

Gainers				Losers			
Company Name	Last Price	% Gain	Volume	Company Name	Last Price	% Loss	Volume
Jindal Photo	1029.4	20	42864	Silky Overseas	119.5	-12.87	22400
Jindal Poly Inv	865.6	20	155501	GSS Infotech	28.76	-12.32	1506941
Coffee Day	50.03	17.61	18727558	Aatmaj Health	19.1	-10.75	6000
Elgi Rubber	82.54	15.65	2266079	KCK Ind	44.2	-9.15	235000
Jindal PolyFilm	601.4	15.63	5105458	Panama Petro	295.15	-8.88	341047
Prajay Engineer	27.18	15.56	1346616	Radiowalla Netw	55.15	-8.08	27200
Macobs Tech	193.7	13.97	162400	Balkrishna	21.35	-7.74	632943



## Nifty Daily chart with RSI indicator



## BankNifty Daily chart with RSI indicator



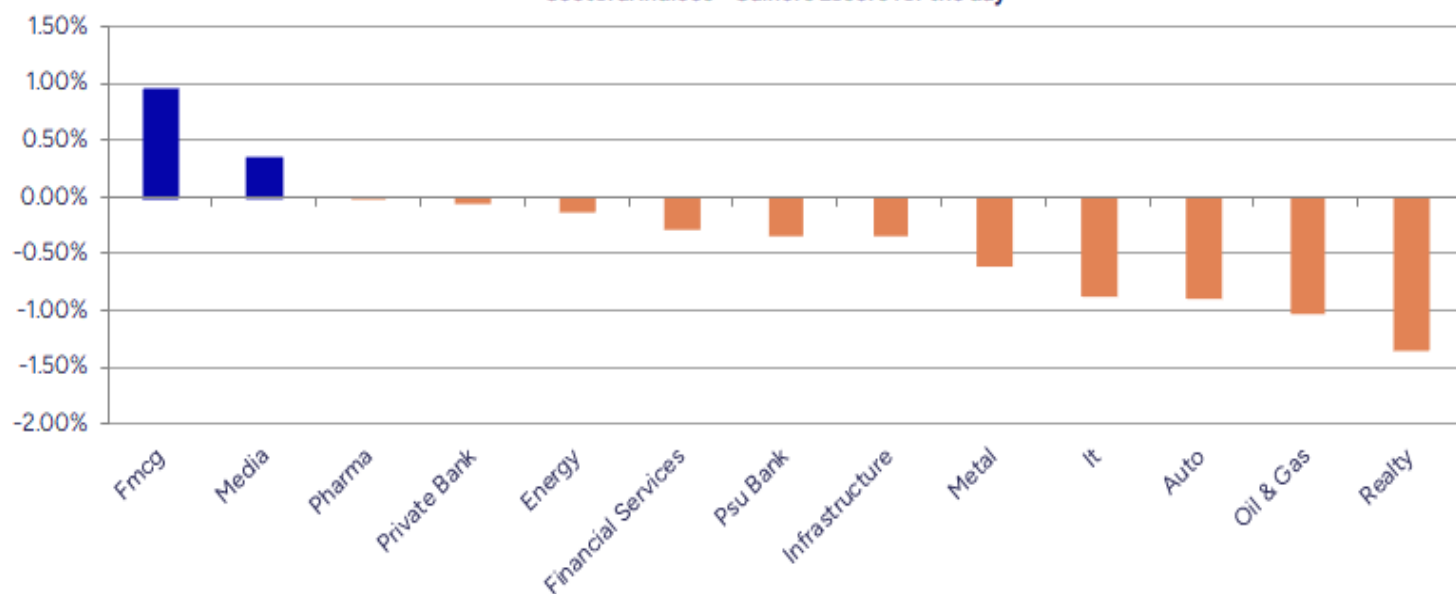
Breakouts - Cross above 200 DMA			
Company Name	LCP	Change %	200 DMA
Prajay Engineer	27.18	13.34	23.98
Aarvi Encon	128.83	9.97	117.15
Jindal Poly Inv	865.6	6.83	810.23
CG Power	694.3	4.38	665.18
Shreeoswal Seed	16.59	4.21	15.92
Elgi Rubber	82.54	4.13	79.27
Shree Tirupati	58.22	3.76	56.11
Rajgor Castor	24.75	3.69	23.87
Welspun Invest	939.1	3.58	906.66
Loyal Textiles	313.9	3.47	303.37
Williamson Mago	34.59	3.35	33.47
NGL Fine Chem	1422.7	3.02	1380.95
Kalyani Forge	672.25	2.65	654.87
Pranik Logistic	81	2.20	79.26
Veedol Corp	1651.8	2.00	1619.41
Fino Payments	280.95	1.93	275.63
Nila Spaces	13.65	1.87	13.4
Steel Str Wheel	216.14	1.81	212.3

\* Stocks crossing above its Simple Moving Average (200DMA)

Breakdown - Cross below 200 DMA			
Company Name	LCP	Change %	200 DMA
KCK Industries	44.2	-7.14	47.6
Genus Power	327.55	-5.53	346.73
JHS Svendgaard	36.1	-5.35	38.14
Ramdevbaba Solv	118.2	-3.95	123.06
Gillanders Arbu	114.16	-3.65	118.49
Yasho Ind.	1816.1	-3.44	1880.89
Kay Cee Energy	283.7	-2.68	291.52
Nephro Care Ind	155.05	-2.26	158.63
Nuvama Wealth	6384	-2.15	6524.5
Softtech Engine	381.5	-1.93	389
Orissa Bengal C	54.13	-1.76	55.1
Balrampur Chini	536.2	-1.69	545.43
LIC India	852.15	-1.69	866.83
Supreme Infra	109.62	-1.60	111.4
Peninsula Land	34.51	-1.57	35.06
HEG	462	-1.57	469.35
Systango Tech	231.55	-1.57	235.25
Esab India	5140.5	-1.26	5206.14

\* Stocks crossing below its Simple Moving Average (200DMA)

Sectoral Indices - Gainers Losers for the day



Stocks witnessing a volume surge as compared to their 5 day average volume

Watch out for the stocks that have seen a huge spurt in its share price over the last three days

Volume Shockers - NSE					
Company name	LCP	% Chg	Volume	Avg Vol *	% Chg
Jindal PolyFilm	601.4	15.63	5105458	22165	22934
Jindal Worldwid	37.19	7.55	49728212	428067	11517
Omaxe	87.49	4.01	8766580	166458	5167
Jindal Poly Inv	865.6	20	155501	3477	4372
Relaxo Footwear	477.6	6.68	3014207	102838	2831
Jay Jalaram	123.95	3.38	106000	4700	2155
OM Infra	110.6	8.21	1709007	90418	1790
KCK Industries	44.2	-9.15	235000	13600	1628
Commercial Syn	143.7	7.23	1740284	116053	1400
Aarvi Encon	128.83	10.38	589785	41525	1320
Accelya	1398.4	-0.03	109449	7712	1319
Steelcast	209.7	-4.29	196927	13943	1312
Cool Caps	83.8	0	115000	8400	1269
Panama Petro	295.15	-8.88	341047	25671	1229
Jindal Photo	1029.4	20	42864	3308	1196
Tarsons Product	311.8	-0.4	456338	37422	1119
Panacea Biotech	426.8	9.75	1271256	107719	1080
Avro India	149.48	-0.97	55882	5250	964
Rushil Decor	27.27	5.57	16008625	1712798	835
ARHAM	101.95	13.4	114000	13000	777

\* the Average Volume of last 5 days

Price Shockers - NSE				
Company name	LCP	Prv Close	% Chg	Volume
Elgi Rubber	82.54	63.31	30.37	2266079
Jindal Photo	1029.4	850.65	21.01	42864
Reliable Data S	163.91	135.47	20.99	1033726
Jindal Poly Inv	865.6	730.05	18.57	155501
Rushil Decor	27.27	23.03	18.41	16008625
Jindal PolyFilm	601.4	510.6	17.78	5105458
Coffee Day	50.03	42.96	16.46	18727558
Crayons Advert	53	45.8	15.72	88000
Prajay Engineer	27.18	23.63	15.02	1346616
Advanced Enzyme	345.95	301.85	14.61	12789026
Agni Green	25.35	22.25	13.93	82500
Lotus Eye Care	116.84	103.53	12.86	839686
Jubilant Agri	2888.5	2589.7	11.54	59641
Kaushalya Infra	1069.9	960.5	11.39	0
Mahickra Chemic	162	145.9	11.03	3000
Bharat Seats	147.6	133.71	10.39	352364
Flexituff Ventu	25.65	23.27	10.23	11638
Tamil Telecom	17.9	16.24	10.22	38023
ANB Metal Cast	189.45	171.9	10.21	25600
Osia Hyper Reta	17.5	15.88	10.2	129034

\* the % price rise of the last 3 days



Nifty 50 stocks - Summary Details											
Symbol	LTP	Chng	% Chng	Volume (lacs)	Turnover (crs.)	52w High	Diff with 52w H	52w Low	Diff with 52w L	365 days % chng	30 days % chng
NIFTY 50	24426.85	-74.05	-0.30%	3254.96	26793.84	26277.35	7.04%	21743.65	12.34%	-1.29%	-2.20%
ADANIENT	2247.90	-27.30	-1.20%	7.96	179.65	3211.00	29.99%	2025.00	11.01%	-10.70%	-24.86%
ADANIPTS	1313.00	-2.40	-0.18%	15.93	209.25	1499.50	12.44%	995.65	31.87%	-5.77%	-10.50%
APOLLOHOSP	7611.00	-117.00	-1.51%	4.82	367.71	7980.00	4.62%	6001.00	26.83%	3.65%	14.04%
ASIANPAINT	2520.00	31.00	1.25%	17.99	452.04	3394.90	25.77%	2124.75	18.60%	3.64%	-20.36%
AXISBANK	1048.90	-3.00	-0.29%	47.17	495.93	1281.65	18.16%	933.50	12.36%	-1.16%	-10.17%
BAJAJ-AUTO	8632.00	-57.50	-0.66%	3.44	297.89	12774.00	32.43%	7089.35	21.76%	6.91%	-18.46%
BAJAJFINSV	1916.00	-1.60	-0.08%	7.35	141.13	2135.00	10.26%	1551.65	23.48%	-2.79%	11.91%
BAJFINANCE	879.00	2.15	0.25%	56.72	498.94	978.80	10.20%	645.10	36.26%	-1.09%	-87.29%
BEL	369.40	5.55	1.53%	127.39	469.36	436.00	15.28%	240.25	53.76%	-6.28%	21.30%
BHARTIARTL	1888.20	7.10	0.38%	43.39	818.93	2045.80	7.70%	1511.00	24.96%	-1.94%	20.87%
CIPLA	1587.00	6.70	0.42%	13.42	213.01	1702.05	6.76%	1335.00	18.88%	0.40%	-2.34%
COALINDIA	374.80	0.50	0.13%	45.78	172.18	537.00	30.20%	349.25	7.32%	-2.44%	-28.89%
DRREDDY	1255.60	-4.20	-0.33%	24.23	304.80	1414.99	11.26%	1020.00	23.10%	-3.08%	-82.00%
EICHERMOT	6103.00	-30.00	-0.49%	4.96	303.10	6269.50	2.66%	4508.75	35.36%	12.11%	23.98%
GRASIM	2778.10	-6.20	-0.22%	5.42	150.84	2898.40	4.15%	2276.95	22.01%	1.51%	2.53%
HCLTECH	1453.70	3.90	0.27%	34.04	495.61	2012.20	27.76%	1302.75	11.59%	-1.53%	-15.68%
HDFCBANK	953.40	-4.40	-0.46%	148.24	1416.02	1018.85	6.42%	806.50	18.21%	-52.62%	-41.49%
HDFCLIFE	774.40	-0.95	-0.12%	18.65	144.11	820.75	5.65%	584.30	32.53%	2.51%	4.48%
HEROMOTOCO	5109.50	17.80	0.35%	7.83	399.43	6246.25	18.20%	3344.00	52.80%	17.72%	-4.14%
HINDALCO	704.00	2.60	0.37%	53.35	375.77	772.65	8.89%	546.45	28.83%	1.26%	-0.52%
HINDUNILVR	2660.00	5.60	0.21%	19.73	526.00	3035.00	12.36%	2136.00	24.53%	8.18%	-3.98%
ICICIBANK	1396.20	-2.90	-0.21%	85.19	1192.56	1500.00	6.92%	1186.00	17.72%	-5.86%	14.32%
INDUSINDBK	740.90	-5.70	-0.76%	25.38	188.55	1498.00	50.54%	606.00	22.26%	-7.62%	-47.26%
INFY	1469.00	-31.10	-2.07%	81.69	1208.81	2006.45	26.79%	1307.00	12.39%	-0.90%	-22.64%
ITC	409.50	8.60	2.15%	252.55	1029.24	528.50	22.52%	390.15	4.96%	-1.85%	-19.38%
JIOFIN	311.30	1.20	0.39%	172.68	539.81	363.00	14.24%	198.65	56.71%	-3.43%	-3.77%
JSWSTEEL	1027.00	-8.80	-0.85%	10.62	109.31	1089.20	5.71%	880.00	16.70%	0.09%	9.12%
KOTAKBANK	1959.20	14.50	0.75%	30.74	604.57	2301.90	14.89%	1679.05	16.69%	-1.42%	8.56%
LT	3605.00	44.90	1.26%	16.78	603.02	3963.50	9.05%	2965.30	21.57%	1.85%	-3.50%
M&M	3200.00	-95.30	-2.89%	30.18	969.68	3432.00	6.76%	2425.00	31.96%	3.00%	17.77%
MARUTI	14790.00	38.00	0.26%	6.22	918.26	14895.00	0.70%	10725.00	37.90%	18.31%	19.38%
NESTLEIND	1154.20	-8.20	-0.71%	15.93	185.20	1389.00	16.90%	1055.00	9.40%	-47.73%	-53.36%
NTPC	328.00	-2.80	-0.85%	118.13	387.62	448.45	26.86%	292.80	12.02%	-1.14%	-19.13%
ONGC	233.36	-0.03	-0.01%	99.29	231.52	334.40	30.22%	205.00	13.83%	-3.33%	-28.80%
POWERGRID	275.95	1.50	0.55%	128.41	352.94	366.25	24.66%	247.30	11.59%	-6.36%	-17.94%
RELIANCE	1356.00	-29.90	-2.16%	187.52	2578.72	1551.00	12.57%	1114.85	21.63%	-2.20%	-53.75%
SBILIFE	1806.80	-10.00	-0.55%	8.01	144.92	1936.00	6.67%	1372.55	31.64%	-0.91%	-1.46%
SBIN	802.40	0.45	0.06%	68.61	550.94	875.45	8.34%	680.00	18.00%	0.34%	-0.92%
SHRIRAMFIN	581.90	10.25	1.79%	122.37	711.45	730.45	20.34%	493.35	17.95%	-10.45%	-82.15%
SUNPHARMA	1595.70	10.00	0.63%	31.76	505.77	1960.35	18.60%	1553.05	2.75%	-7.30%	-12.48%
TATACONSUM	1062.00	-0.40	-0.04%	10.80	115.07	1234.30	13.96%	882.90	20.29%	0.08%	-11.55%
TATAMOTORS	669.50	-5.95	-0.88%	82.00	552.27	1142.00	41.37%	535.75	24.97%	-2.44%	-37.14%
TATASTEEL	154.50	0.87	0.57%	169.69	261.99	170.18	9.21%	122.62	26.00%	-4.98%	-0.05%
TCS	3083.80	-9.90	-0.32%	22.72	702.77	4592.25	32.85%	2991.60	3.08%	1.23%	-31.34%
TECHM	1486.00	-9.60	-0.64%	22.80	341.06	1807.70	17.80%	1209.40	22.87%	2.88%	-8.10%
TITAN	3620.20	-17.50	-0.48%	6.61	239.29	3867.00	6.38%	2925.00	23.77%	7.65%	3.12%
TRENT	5292.00	56.50	1.08%	13.34	711.42	8345.00	36.58%	4488.00	17.91%	4.68%	-27.71%
ULTRACEMCO	12635.00	114.00	0.91%	1.78	225.06	12930.00	2.28%	10047.85	25.75%	2.45%	11.45%
WIPRO	249.30	-1.35	-0.54%	101.17	253.54	324.60	23.20%	228.00	9.34%	-0.46%	-53.11%
ETERNAL	315.60	0.10	0.03%	624.16	1946.77	331.35	4.75%	194.80	62.01%	2.92%	#VALUE!

## Disclaimer / Disclosures

### ANALYST CERTIFICATION

I, Mrs. Vaishali Parekh B.com, Research Analyst, author and the name subscribed to this report, hereby certify that all of the views expressed in this research report accurately reflect our views about the subject issuer(s) or securities. We also certify that no part of our compensation was, is, or will be directly or indirectly related to the specific recommendation(s) or view(s) in this report.

Terms & conditions and other disclosures:

Prabhudas Lilladher Pvt. Ltd, Mumbai, India (hereinafter referred to as "PL") is engaged in the business of Stock Broking, Portfolio Manager, Depository Participant and distribution for third party financial products. PL is a subsidiary of Prabhudas Lilladher Advisory Services Pvt Ltd. which has its various subsidiaries engaged in business of commodity broking, investment banking, financial services (margin funding) and distribution of third party financial/other products, details in respect of which are available at [www.plindia.com](http://www.plindia.com)

This document has been prepared by the Research Division of PL and is meant for use by the recipient only as information and is not for circulation. This document is not to be reported or copied or made available to others without prior permission of PL. It should not be considered or taken as an offer to sell or a solicitation to buy or sell any security.

The information contained in this report has been obtained from sources that are considered to be reliable. However, PL has not independently verified the accuracy or completeness of the same. Neither PL nor any of its affiliates, its directors or its employees accepts any responsibility of whatsoever nature for the information, statements and opinion given, made available or expressed herein or for any omission therein.

Recipients of this report should be aware that past performance is not necessarily a guide to future performance and value of investments can go down as well. The suitability or otherwise of any investments will depend upon the recipient's particular circumstances and, in case of doubt, advice should be sought from an independent expert/advisor.

Either PL or its affiliates or its directors or its employees or its representatives or its clients or their relatives may have position(s), make market, act as principal or engage in transactions of securities of companies referred to in this report and they may have used the research material prior to publication.

PL may from time to time solicit or perform investment banking or other services for any company mentioned in this document.

PL is registered as Research Analyst under Securities and Exchange Board of India (Research Analysts) Regulations, 2014 PL submits that no material disciplinary action has been taken on us by any Regulatory Authority impacting Equity Research Analysis activities.

PL or its research analysts or its associates or his relatives do not have any financial interest in the subject company.

PL or its research analysts or its associates or his relatives do not have actual/beneficial ownership of one per cent or more securities of the subject company at the end of the month immediately preceding the date of publication of the research report.

PL or its research analysts or its associates or his relatives do not have any material conflict of interest at the time of publication of the research report.

PL or its associates might have received compensation from the subject company in the past twelve months.

PL or its associates might have managed or co-managed public offering of securities for the subject company in the past twelve months or mandated by the subject company for any other assignment in the past twelve months.

PL or its associates might have received any compensation for investment banking or merchant banking or brokerage services from the subject company in the past twelve months.

PL or its associates might have received any compensation for products or services other than investment banking or merchant banking or brokerage services from the subject company in the past twelve months PL or its associates might have received any compensation or other benefits from the subject company or third party in connection with the research report.

PL encourages independence in research report preparation and strives to minimize conflict in preparation of research report. PL or its analysts did not receive any compensation or other benefits from the subject Company or third party in connection with the preparation of the research report. PL or its Research Analysts do not have any material conflict of interest at the time of publication of this report.

It is confirmed that Mrs.Vaishali Parekh B.com, Research Analyst of this report has not received any compensation from the companies mentioned in the report in the preceding twelve months compensation of our Research Analysts is not based on any specific merchant banking, investment banking or brokerage service transactions.

The Research analysts for this report certifies that all of the views expressed in this report accurately reflect his or her personal views about the subject company or companies and its or their securities, and no part of his or her compensation was, is or will be, directly or indirectly related to specific recommendations or views expressed in this report.

The research analysts for this report has not served as an officer, director or employee of the subject company PL or its research analysts have not engaged in market making activity for the subject company

Our sales people, traders, and other professionals or affiliates may provide oral or written market commentary or trading strategies to our clients that reflect opinions that are contrary to the opinions expressed herein, and our proprietary trading and investing businesses may make investment decisions that are inconsistent with the recommendations expressed herein. In reviewing these materials, you should be aware that any or all of the foregoing, among other things, may give rise to real or potential conflicts of interest.

PL and its associates, their directors and employees may (a) from time to time, have a long or short position in, and buy or sell the securities of the subject company or (b) be engaged in any other transaction involving such securities and earn brokerage or other compensation or act as a market maker in the financial instruments of the subject company or act as an advisor or lender/borrower to the subject company or may have any other potential conflict of interests with respect to any recommendation and other related information and opinions.