

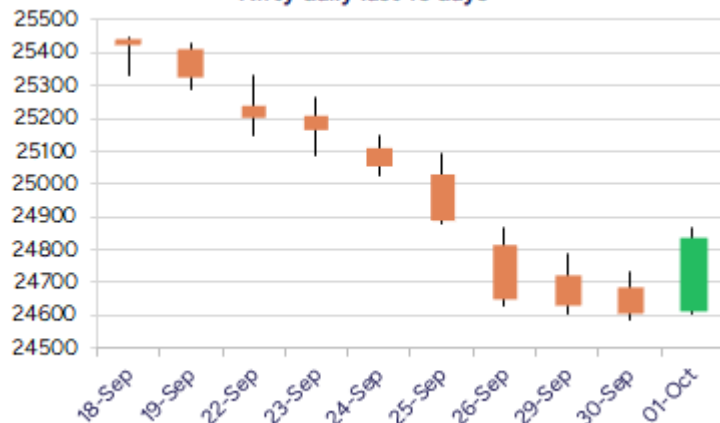
Date: 03rd October 2025

* Sensex 80983.31 + 715.69

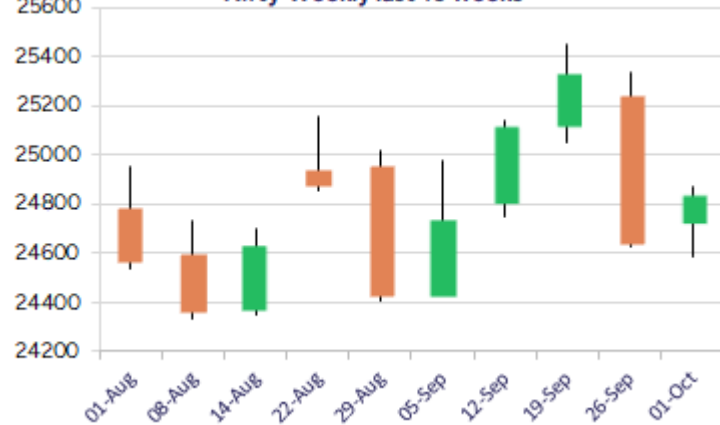
* Nifty 24836.30 + 225.20

* Bank Nifty 55347.95 + 712.10

Nifty daily last 10 days



Nifty Weekly last 10 weeks



*Blue candle → Close rate > Open rate * Red candle → Close rate < Open rate

Market Preview

Nifty witnesses strong bounce back

Nifty witnessed a strong pullback with a bullish candle formation after a long losing streak to improve the bias and sentiment to some extent with hopes of further rise in the coming days. BankNifty has indicated a big bullish candle pattern on the daily chart to regain the lost momentum and with optimistic approach is anticipated to carry on with the positive move further ahead. The market breadth turned strong with the advance decline indicating a ratio of almost 3:1 at close.

Market Forecast

Nifty daily range 24700 - 25100

Nifty, after a long 9 consecutive sessions of losing streak, has finally indicated a strong pullback with a bullish candle formation on the daily chart to improve the bias and sentiment which was desperately needed and important. The index has sustained above the important 24500 zone and with the RSI correcting well from the overbought zone has indicated a trend reversal to anticipate for further rise and would need to carry on with the positive move with near-term hurdle of 25250 level positioned as the resistance zone.

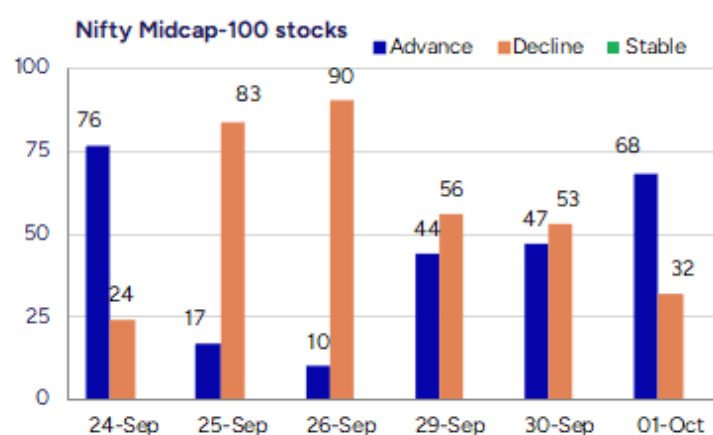
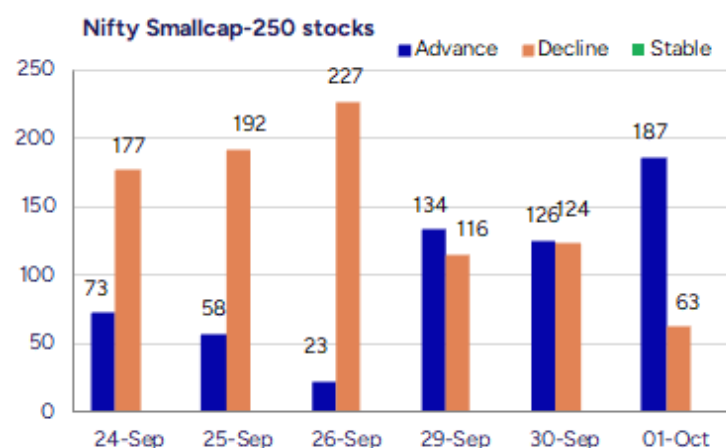
BankNifty, has indicated a strong bullish candle pattern on the daily chart moving past the important 50EMA at 55100 zone to regain strength after the long weak sessions witnessed and further with bias and sentiment significantly improved, can anticipate for fresh upside move once the neckline of the Inverted Head and Shoulder positioned near 55500 zone is decisively breached, as mentioned earlier. The important support would be maintained near the 54400-54500 zone which needs to be sustained.

The support for the day is seen at 24700 levels, while the resistance is seen at 25100 levels. BankNifty would have the daily range of 54900-56000 levels.

Indices	Period	Closing	% Chng	Trend	Reversal	2 Sup	1 Sup	Pivot	1 Res	2 Res
Nifty	Daily	24836.30	0.92%	1	24781.45	24508	24672	24770	24934	25032
	Weekly	24654.70	-2.65%	-1	24958.95	24170	24412	24872	25114	25574
	Monthly	24611.10	0.75%	-2	25016.70	23820	24215	24828	25224	25837
Bank Nifty	Daily	55347.95	1.30%	1	54861.50	54288	54818	55112	55642	55937
	Weekly	54389.35	-1.93%	-1	54796.15	53434	53912	54788	55266	56143
	Monthly	54635.85	1.83%	-2	56782.20	52417	53526	54680	55789	56942
Sensex	Daily	80983.31	0.89%	1	80801.40	79829	80406	80737	81315	81646
	Weekly	80426.46	-2.66%	-1	81345.95	78867	79647	81112	81892	83358
	Monthly	80267.62	0.57%	-3	82019.05	77784	79026	81071	82312	84357

Gainers - Losers (Nifty 500 Stocks)

Gainers				Losers			
Company Name	Last Price	% Gain	Volume	Company Name	Last Price	% Loss	Volume
Atlantaa	46.38	20	284126	Shanthala	32.5	-10.47	1200
Owais Metal	507.1	20	87700	Cedaar Textile	85.4	-10.11	75000
Sikko Industrie	88.41	19.99	557821	Galaxy Medicare	29.2	-10.02	56000
Dynacons Sys	1011.25	17.59	2184958	P E Analytics	184	-9.8	11400
Borosil Sci	148.67	16.7	2801835	Gayatri Rubbers	339	-8.38	3750
TVS Srichakra	3701.1	16.52	137928	Fonebox Retail	91.25	-7.83	2000
Global Surfaces	99.2	16.21	1572761	Pentagon Rubber	70.9	-7.32	46000



Nifty Daily chart with RSI indicator



BankNifty Daily chart with RSI indicator



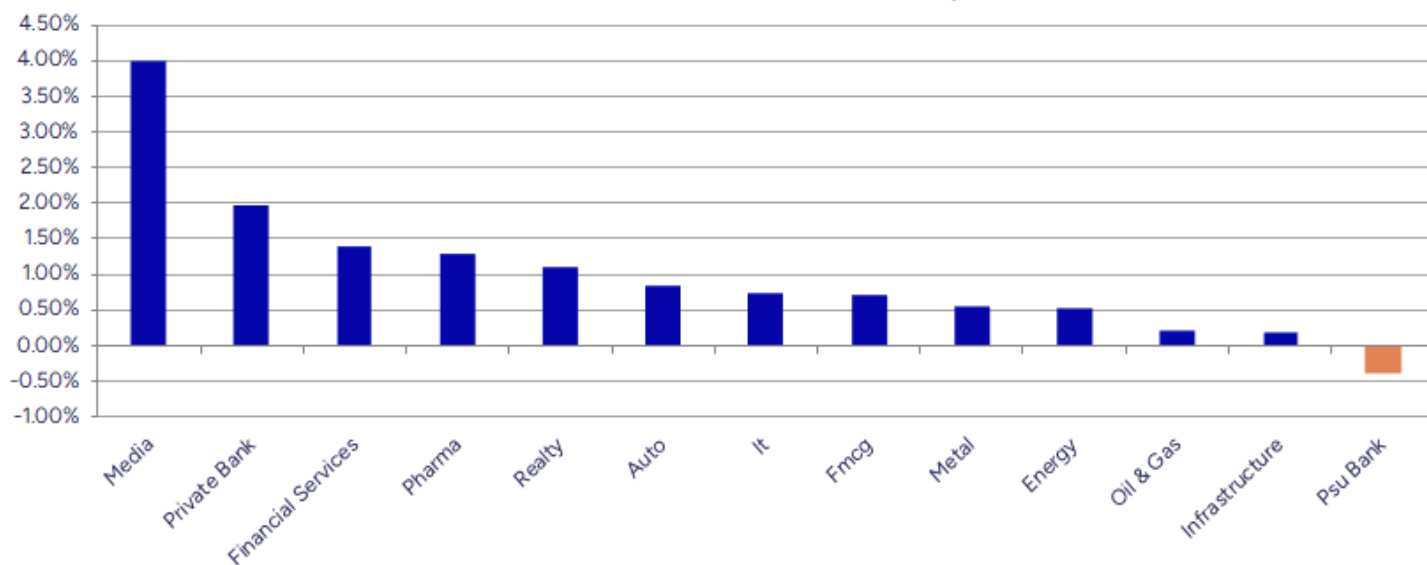
Breakouts - Cross above 200 DMA			
Company Name	LCP	Change %	200 DMA
Sikko Industrie	88.41	9.58	80.68
Mazda	291.7	6.52	273.85
Greenpanel Ind	305.15	6.46	286.64
STEL Holdings	439.75	6.00	414.86
Master Trust	153.99	5.70	145.69
Time Techno	221.71	5.52	210.12
NBI Industrial	2764.1	4.68	2640.4
Wise Travel	166.1	4.62	158.77
Engineers India	201.66	4.36	193.23
Shriram Finance	648.7	4.30	621.98
Electrotherm	1038.5	4.29	995.81
DocMode Health	78.8	4.04	75.74
Onelife Capital	13.49	3.77	13
Tata Motors	718.35	3.48	694.2
Shreeoswal Seed	15.69	3.43	15.17
Freshara Agro	177.85	3.29	172.18
Arman Financial	1507.9	3.24	1460.55
Superhouse	177.24	3.12	171.87

* Stocks crossing above its Simple Moving Average (200DMA)

Breakdown - Cross below 200 DMA			
Company Name	LCP	Change %	200 DMA
Cyber Media Res	88.35	-3.32	91.38
Maan Aluminium	105.64	-3.29	109.23
Matrimony.com	526.5	-3.22	544.02
Ola Electric	55.85	-1.81	56.88
V-Guard Ind	370.1	-1.16	374.44
Blue Star	1850.3	-1.15	1871.81
Hester Bio	1875.1	-0.82	1890.52
OM Infra	126.56	-0.80	127.58
Robust Hotels	245.3	-0.72	247.09
Greenply Ind	299.7	-0.60	301.51
PNC Infratech	292.25	-0.59	293.98
Alkyl Amines	1899.5	-0.52	1909.5
Tata Nifty Ind	90.99	-0.42	91.37
TGB Banquets	11.89	-0.25	11.92
Fert and Chem	879.5	-0.24	881.59
Shree Cements	29150	-0.17	29199.29
Vinati Organics	1730.5	-0.17	1733.39
JB Chemicals	1689.7	-0.12	1691.68

* Stocks crossing below its Simple Moving Average (200DMA)

Sectoral Indices - Gainers Losers for the day



Stocks witnessing a volume surge as compared to their 5 day average volume

Watch out for the stocks that have seen a huge spurt in its share price over the last three days

Volume Shockers - NSE					
Company name	LCP	% Chg	Volume	Avg Vol *	% Chg
Greenpanel Ind	305.15	12.89	7383570	95621	7622
Sigma Solve	579.55	13.04	627187	9030	6846
Netweb	4097.4	12.3	11322148	163390	6830
R M Drip & Spri	75.08	-1.02	603958	9800	6063
Borosil Sci	148.67	16.7	2801835	56183	4887
Dynacons Sys	1011.25	17.59	2184958	45857	4665
Atal	22.77	1.11	4614565	100889	4474
Cool Caps	90.3	-0.55	302500	8400	3501
Suryoday Small	155.59	15.27	20005243	627956	3086
India Nippon	1003.85	11.24	1014142	37880	2577
Pfizer	5151	2.28	381759	14295	2571
AB Cotspin	439	1.67	68983	2700	2455
KCK Industries	43.95	2.81	310000	13600	2179
Nazara	277.25	8.9	15224403	705279	2059
Manomay Tex Ind	175.9	3.47	68691	3349	1951
Shankara Buildi	187.53	-5	379894	18537	1949
Lakshmi Finance	206.43	-0.24	47976	2447	1860
Akme Fintrade I	9.23	6.95	15320388	817329	1774
Sun TV Network	576.4	10.12	5637511	308480	1728
TVS Srichakra	3701.1	16.52	137928	10073	1269

* the Average Volume of last 5 days

Price Shockers - NSE				
Company name	LCP	Prv Close	% Chg	Volume
Cybertech	231.57	172.52	34.23	4449261
Stallion India	266.3	202.05	31.8	4231075
Sikko Industrie	88.41	70.41	25.56	557821
Sammaan Capital	169.58	137.82	23.04	83641191
Prozone Realty	60.17	49.28	22.1	25471803
Tata Inv Corp	10580	8666	22.09	2836412
Dynacons Sys	1011.25	849.15	19.09	2184958
Owais Metal	507.1	426.65	18.86	87700
Atlantaa	46.38	39.06	18.74	284126
Nakoda Group	34.63	29.28	18.27	305872
Umiya Buildcon	101.23	86.14	17.52	399260
Vascon Engineer	67.48	57.88	16.59	9639560
Namo Ewaste	191.45	165.15	15.92	65600
Thinking Hats	39.35	34.05	15.57	141000
Transwind Infra	16.15	14	15.36	4000
Manav Infra Pro	20.75	18	15.28	12000
V2 Retail	2152.6	1885.9	14.14	87396
Shalimar Paints	86.75	76.18	13.88	155039
Sejal Glass	805.8	708.9	13.67	9006
Indo Thai Secu	293.25	258.52	13.43	1215215

* the % price rise of the last 3 days

Nifty 50 stocks - Summary Details											
Symbol	LTP	Chng	% Chng	Volume (lacs)	Turnover (crs.)	52w High	Diff with 52w H	52w Low	Diff with 52w L	365 days % chng	30 days % chng
NIFTY 50	24836.30	225.20	0.92%	3081.02	29038.74	25669.35	3.25%	21743.65	14.22%	0.75%	-5.99%
ADANIENT	2594.30	88.40	3.53%	15.73	398.78	3211.00	19.21%	2025.00	28.11%	11.64%	-19.95%
ADANIPTS	1422.90	19.40	1.38%	16.02	225.72	1494.00	4.76%	995.65	42.91%	6.91%	-3.65%
APOLLOHOSP	7460.00	51.00	0.69%	2.21	163.92	7980.00	6.52%	6001.00	24.31%	-2.64%	2.42%
ASIANPAINT	2339.70	-10.30	-0.44%	6.48	151.20	3358.00	30.32%	2124.75	10.12%	-6.69%	-29.02%
AXISBANK	1161.40	29.80	2.63%	96.55	1113.92	1275.00	8.91%	933.50	24.41%	8.27%	-11.12%
BAJAJ-AUTO	8616.00	-62.50	-0.72%	5.51	478.83	12651.15	31.90%	7089.35	21.53%	0.54%	-31.48%
BAJAJFINSV	2010.00	3.60	0.18%	6.84	136.64	2135.00	5.85%	1551.65	29.54%	4.85%	-0.21%
BAJFINANCE	987.35	-11.55	-1.16%	69.32	683.66	1036.00	4.70%	645.10	53.05%	13.79%	-87.12%
BEL	407.05	3.10	0.77%	131.53	534.08	436.00	6.64%	240.25	69.43%	9.35%	37.66%
BHARTIARTL	1869.50	-8.90	-0.47%	56.75	1059.54	2045.80	8.62%	1511.00	23.73%	-0.55%	8.29%
CIPLA	1511.60	8.30	0.55%	10.00	150.77	1702.05	11.19%	1335.00	13.23%	-5.42%	-10.12%
COALINDIA	389.85	-0.10	-0.03%	49.77	194.12	516.00	24.45%	349.25	11.62%	4.04%	-24.44%
DRREDDY	1248.20	24.50	2.00%	40.83	504.80	1405.90	11.22%	1020.00	22.37%	-2.89%	-81.87%
EICHERMOT	6990.00	-15.50	-0.22%	3.14	220.42	7122.50	1.86%	4508.75	55.03%	14.79%	38.38%
ETERNAL	329.45	3.95	1.21%	183.64	598.39	343.90	4.20%	194.80	69.12%	3.68%	#VALUE!
GRASIM	2792.00	35.10	1.27%	3.53	97.83	2911.00	4.09%	2276.95	22.62%	-0.67%	-0.94%
HCLTECH	1391.00	5.90	0.43%	22.53	312.75	2012.20	30.87%	1302.75	6.77%	-4.79%	-23.41%
HDFCBANK	965.80	14.80	1.56%	253.48	2437.79	1018.85	5.21%	806.50	19.75%	-0.06%	-45.74%
HDFCLIFE	762.75	6.30	0.83%	15.41	116.72	820.75	7.07%	584.30	30.54%	-2.02%	3.59%
HINDALCO	766.00	4.05	0.53%	36.64	279.32	772.65	0.86%	546.45	40.18%	8.24%	1.98%
HINDUNILVR	2535.00	20.60	0.82%	14.84	374.93	2997.90	15.44%	2136.00	18.68%	-5.47%	-15.23%
ICICIBANK	1372.00	24.00	1.78%	209.52	2868.19	1500.00	8.53%	1186.00	15.68%	-3.56%	3.17%
INDIGO	5594.00	-0.50	-0.01%	7.96	443.76	6232.50	10.24%	3780.00	47.99%	-0.91%	13.12%
INFY	1447.90	6.10	0.42%	62.50	899.72	2006.45	27.84%	1307.00	10.78%	-1.89%	-24.38%
ITC	404.90	3.35	0.83%	176.42	712.23	524.35	22.78%	390.15	3.78%	-2.00%	-23.18%
JIOFIN	300.80	7.60	2.59%	85.51	254.07	358.15	16.01%	198.65	51.42%	-5.94%	-18.36%
JSWSTEEL	1145.50	2.80	0.25%	11.29	128.77	1167.90	1.92%	880.00	30.17%	11.31%	14.09%
KOTAKBANK	2067.70	75.00	3.76%	61.16	1252.33	2301.90	10.17%	1679.05	23.15%	1.65%	6.42%
LT	3685.00	26.00	0.71%	20.05	733.02	3963.50	7.03%	2965.30	24.27%	1.61%	-1.26%
M&M	3468.50	41.50	1.21%	23.64	819.76	3723.80	6.86%	2425.00	43.03%	7.11%	7.64%
MARUTI	15970.00	-59.00	-0.37%	4.26	678.91	16435.00	2.83%	10725.00	48.90%	8.37%	18.77%
MAXHEALTH	1111.90	-2.80	-0.25%	32.66	364.55	1314.30	15.40%	888.90	25.09%	-3.43%	12.06%
NESTLEIND	1167.00	14.10	1.22%	7.28	84.41	1370.00	14.82%	1055.00	10.62%	-0.29%	-58.01%
NTPC	340.25	-0.20	-0.06%	60.21	204.90	448.45	24.13%	292.80	16.21%	3.94%	-22.08%
ONGC	243.20	3.70	1.54%	103.70	252.38	301.80	19.42%	205.00	18.63%	2.48%	-19.41%
POWERGRID	281.30	1.05	0.37%	118.12	332.13	357.45	21.30%	247.30	13.75%	1.82%	-20.89%
RELIANCE	1370.00	6.00	0.44%	120.46	1649.72	1551.00	11.67%	1114.85	22.89%	0.50%	-55.31%
SBILIFE	1800.80	10.20	0.57%	7.05	125.99	1912.00	5.82%	1372.55	31.20%	-0.83%	-4.89%
SBIN	865.15	-7.30	-0.84%	108.31	938.82	880.50	1.74%	680.00	27.23%	8.72%	8.70%
SHRIRAMFIN	647.90	31.80	5.16%	151.07	966.82	728.99	11.12%	493.35	31.33%	6.18%	-82.99%
SUNPHARMA	1639.00	44.70	2.80%	31.09	507.42	1960.35	16.39%	1548.00	5.88%	-0.01%	-18.19%
TATACONSUM	1143.00	13.70	1.21%	7.90	90.07	1213.65	5.82%	882.90	29.46%	6.00%	-6.01%
TATAMOTORS	718.00	37.80	5.56%	301.61	2133.41	996.95	27.98%	535.75	34.02%	1.67%	-31.50%
TATASTEEL	167.56	-1.21	-0.72%	175.36	293.82	174.44	3.94%	122.62	36.65%	9.25%	1.33%
TCS	2915.10	26.70	0.92%	19.52	565.64	4494.90	35.15%	2866.60	1.69%	-6.36%	-32.96%
TECHM	1418.00	17.70	1.26%	16.83	238.03	1807.70	21.56%	1209.40	17.25%	-5.47%	-12.98%
TITAN	3404.80	37.80	1.12%	7.99	270.29	3863.55	11.87%	2925.00	16.40%	-7.21%	-11.78%
TRENT	4843.00	165.50	3.54%	12.70	610.30	8345.00	41.97%	4488.00	7.91%	-11.71%	-40.29%
ULTRACEMCO	12125.00	-97.00	-0.79%	1.30	157.08	13097.00	7.42%	10047.85	20.67%	-3.31%	2.26%
WIPRO	241.80	2.43	1.02%	94.79	228.06	324.60	25.51%	228.00	6.05%	-4.03%	-55.82%

Disclaimer / Disclosures

ANALYST CERTIFICATION

I, Mrs. Vaishali Parekh B.com, Research Analyst, author and the name subscribed to this report, hereby certify that all of the views expressed in this research report accurately reflect our views about the subject issuer(s) or securities. We also certify that no part of our compensation was, is, or will be directly or indirectly related to the specific recommendation(s) or view(s) in this report.

Terms & conditions and other disclosures:

Prabhudas Lilladher Pvt. Ltd, Mumbai, India (hereinafter referred to as "PL") is engaged in the business of Stock Broking, Portfolio Manager, Depository Participant and distribution for third party financial products. PL is a subsidiary of Prabhudas Lilladher Advisory Services Pvt Ltd. which has its various subsidiaries engaged in business of commodity broking, investment banking, financial services (margin funding) and distribution of third party financial/other products, details in respect of which are available at www.plindia.com

This document has been prepared by the Research Division of PL and is meant for use by the recipient only as information and is not for circulation. This document is not to be reported or copied or made available to others without prior permission of PL. It should not be considered or taken as an offer to sell or a solicitation to buy or sell any security.

The information contained in this report has been obtained from sources that are considered to be reliable. However, PL has not independently verified the accuracy or completeness of the same. Neither PL nor any of its affiliates, its directors or its employees accepts any responsibility of whatsoever nature for the information, statements and opinion given, made available or expressed herein or for any omission therein.

Recipients of this report should be aware that past performance is not necessarily a guide to future performance and value of investments can go down as well. The suitability or otherwise of any investments will depend upon the recipient's particular circumstances and, in case of doubt, advice should be sought from an independent expert/advisor.

Either PL or its affiliates or its directors or its employees or its representatives or its clients or their relatives may have position(s), make market, act as principal or engage in transactions of securities of companies referred to in this report and they may have used the research material prior to publication.

PL may from time to time solicit or perform investment banking or other services for any company mentioned in this document.

PL is registered as Research Analyst under Securities and Exchange Board of India (Research Analysts) Regulations, 2014 PL submits that no material disciplinary action has been taken on us by any Regulatory Authority impacting Equity Research Analysis activities.

PL or its research analysts or its associates or his relatives do not have any financial interest in the subject company.

PL or its research analysts or its associates or his relatives do not have actual/beneficial ownership of one per cent or more securities of the subject company at the end of the month immediately preceding the date of publication of the research report.

PL or its research analysts or its associates or his relatives do not have any material conflict of interest at the time of publication of the research report.

PL or its associates might have received compensation from the subject company in the past twelve months.

PL or its associates might have managed or co-managed public offering of securities for the subject company in the past twelve months or mandated by the subject company for any other assignment in the past twelve months.

PL or its associates might have received any compensation for investment banking or merchant banking or brokerage services from the subject company in the past twelve months.

PL or its associates might have received any compensation for products or services other than investment banking or merchant banking or brokerage services from the subject company in the past twelve months PL or its associates might have received any compensation or other benefits from the subject company or third party in connection with the research report.

PL encourages independence in research report preparation and strives to minimize conflict in preparation of research report. PL or its analysts did not receive any compensation or other benefits from the subject Company or third party in connection with the preparation of the research report. PL or its Research Analysts do not have any material conflict of interest at the time of publication of this report.

It is confirmed that Mrs.Vaishali Parekh B.com, Research Analyst of this report has not received any compensation from the companies mentioned in the report in the preceding twelve months compensation of our Research Analysts is not based on any specific merchant banking, investment banking or brokerage service transactions.

The Research analysts for this report certifies that all of the views expressed in this report accurately reflect his or her personal views about the subject company or companies and its or their securities, and no part of his or her compensation was, is or will be, directly or indirectly related to specific recommendations or views expressed in this report.

The research analysts for this report has not served as an officer, director or employee of the subject company PL or its research analysts have not engaged in market making activity for the subject company

Our sales people, traders, and other professionals or affiliates may provide oral or written market commentary or trading strategies to our clients that reflect opinions that are contrary to the opinions expressed herein, and our proprietary trading and investing businesses may make investment decisions that are inconsistent with the recommendations expressed herein. In reviewing these materials, you should be aware that any or all of the foregoing, among other things, may give rise to real or potential conflicts of interest.

PL and its associates, their directors and employees may (a) from time to time, have a long or short position in, and buy or sell the securities of the subject company or (b) be engaged in any other transaction involving such securities and earn brokerage or other compensation or act as a market maker in the financial instruments of the subject company or act as an advisor or lender/borrower to the subject company or may have any other potential conflict of interests with respect to any recommendation and other related information and opinions.