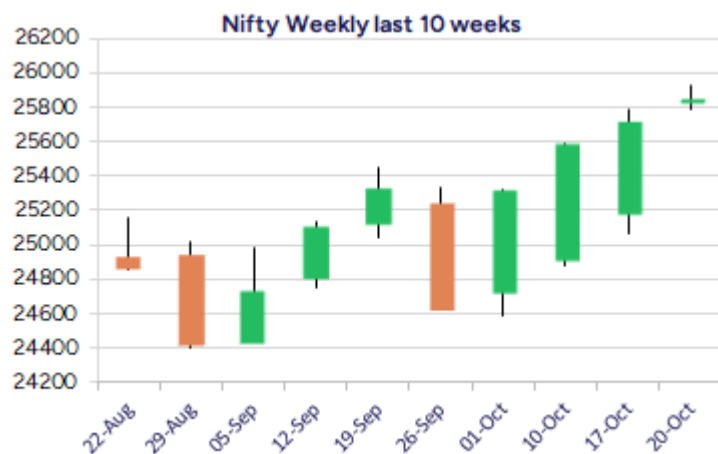
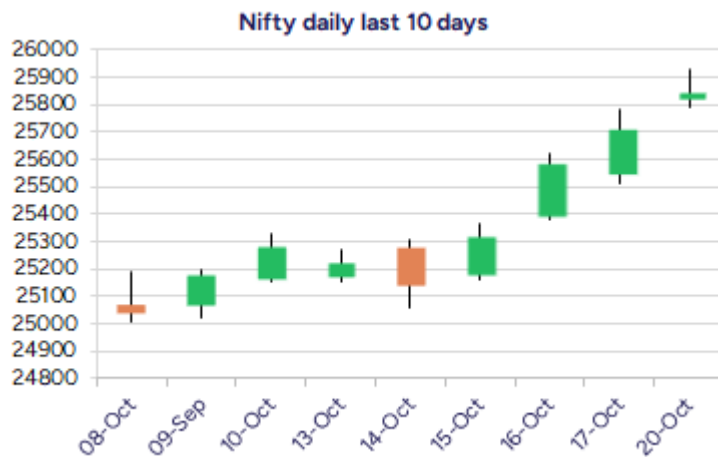


Date: 23<sup>rd</sup> October 2025

\* Sensex 84363.37 + 411.18

\* Nifty 25843.15 + 133.30

\* Bank Nifty 58033.20 + 319.85



\*Blue candle → Close rate > Open rate \* Red candle → Close rate < Open rate

## Market Preview

### Nifty surges ahead with trend improving

Nifty gained further with a strong gap up opening to move past the 25900 zone with strong bias maintained and with the trend getting better, one can anticipate for further rise in the coming days. BankNifty surged ahead to close above the 58000 zone with the support of most of the frontline banking stocks except for ICICI Bank with result outcome below expectations. The market breadth was strong with the advance decline indicating a ratio of 3:2 at close.

## Market Forecast

### Nifty daily range 25700 - 26000

Nifty surged ahead with a strong opening session above the 25900 zone with the overall trend getting strong and is aiming to retest the previous peak zone of 26300 level in the coming days. The index would have the important support positioned near the trendline zone at 25400 level which needs to be sustained to maintain the bias intact and currently with the undertone being strong, can expect for further gains in the coming days.

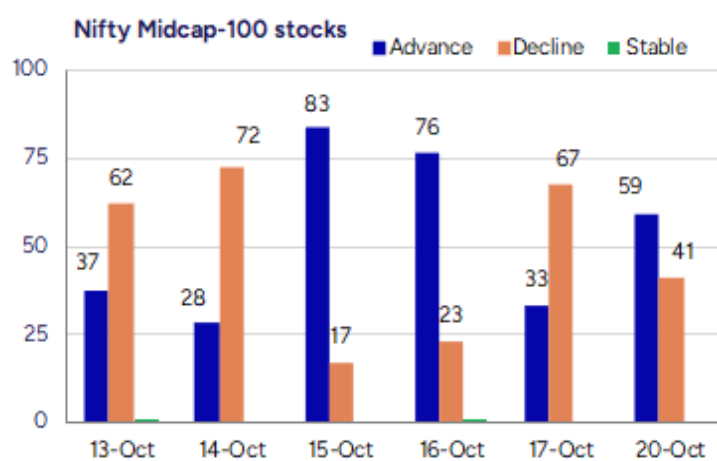
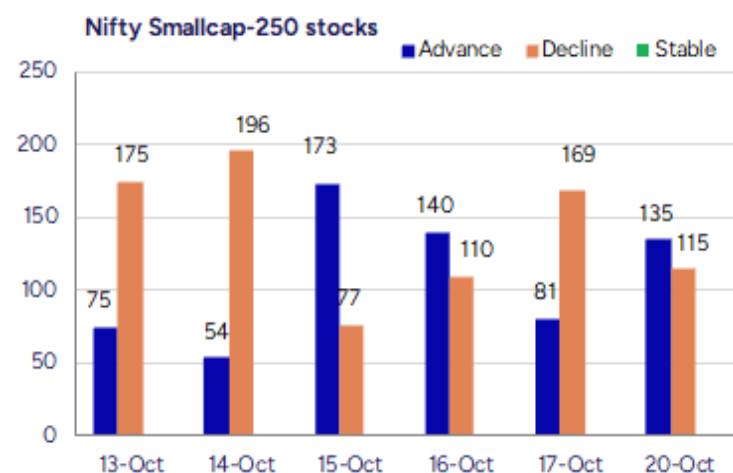
BankNifty continued with the positive uptrend to close above the 58000 zone with strong bias maintained and with most of the frontline banking stocks getting ready for fresh upward move, we expect further upward move in the coming days with next targets of 58600 and 59700 levels achievable in the coming days. The previous consolidation zone at 57300 level would be positioned as the important support zone from current level which needs to be sustained.

The support for the day is seen at 25700 levels, while the resistance is seen at 26000 levels. BankNifty would have the daily range of 57600-58700 levels.

Indices	Period	Closing	% Chng	Trend	Reversal	2 Sup	1 Sup	Pivot	1 Res	2 Res
Nifty	Daily	25843.15	0.52%	4	25634.85	25715	25779	25853	25917	25990
	Weekly	25709.85	1.68%	2	25304.90	24799	25254	25518	25973	26237
	Monthly	24611.10	0.75%	-2	25016.70	23820	24215	24828	25224	25837
Bank Nifty	Daily	58033.20	0.55%	13	57674.15	57667	57850	58056	58239	58445
	Weekly	57713.35	1.95%	3	56072.25	55661	56687	57259	58285	58856
	Monthly	54635.85	1.83%	-2	56782.20	52417	53526	54680	55789	56942
Sensex	Daily	84363.37	0.49%	4	83662.50	83946	84155	84406	84614	84865
	Weekly	83952.19	1.76%	2	82458.30	80914	82433	83303	84822	85691
	Monthly	80267.62	0.57%	-3	82019.05	77784	79026	81071	82312	84357

**Gainers - Losers ( Nifty 500 Stocks )**

Gainers				Losers			
Company Name	Last Price	% Gain	Volume	Company Name	Last Price	% Loss	Volume
Mayasheel Vent	76.3	19.97	993000	Onyx Biotech	36.3	-14.39	4000
Hybrid Fin Ser	28.9	18.59	819678	Radiowalla Netw	61.9	-9.64	40000
Rajratan Global	384.8	18.24	4493466	Mask Investment	202.7	-9.33	11771
Global Surfaces	106.62	16.98	2523427	Tata Inv Corp	808	-9.11	6235471
Mahendra Realto	71.25	14.73	459200	Avantel	174	-8.71	20987766
Suraj	333	14.61	342056	Tejas Networks	539	-8.6	3904532
Pratham EPC Pro	175.6	14.55	109600	ATC Energies	54.05	-8.31	105600



## Nifty Daily chart with RSI indicator



## BankNifty Daily chart with RSI indicator

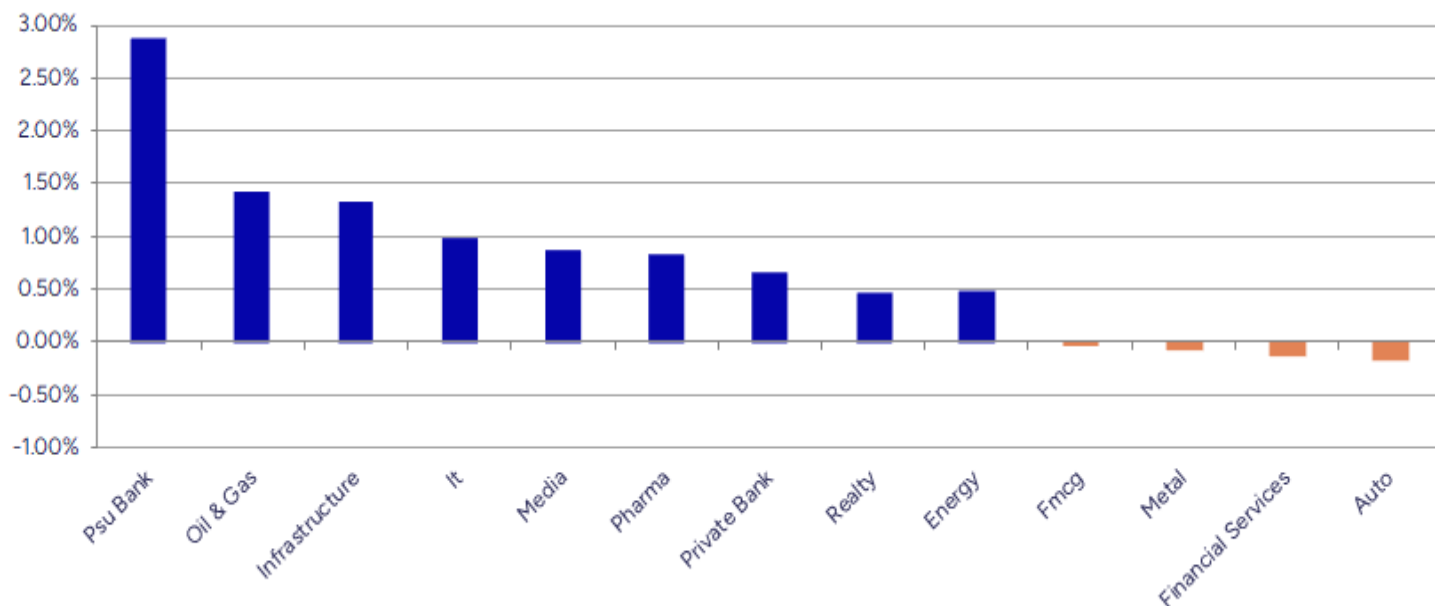


Breakouts - Cross above 200 DMA				Breakdown - Cross below 200 DMA			
Company Name	LCP	Change %	200 DMA	Company Name	LCP	Change %	200 DMA
Pratham EPC Pro	175.6	5.92	165.78	Cambridge Tech	50.96	-4.28	53.24
Bhageria Indu	189.89	5.73	179.6	Petro Carbon	175.5	-2.81	180.57
RPG Life	2404	5.30	2282.91	Cyber Media	17.4	-2.14	17.78
QVC Exports	35.3	3.76	34.02	AGI Greenpac	826.5	-1.68	840.61
Ingersoll Rand	3896.2	3.40	3768.03	Metro	1156.2	-1.52	1174.01
Bandhan Bank	167.01	3.35	161.59	Shree Cements	28900	-1.50	29341.5
GMRP&UI	117.3	3.05	113.83	JSW Infra	294	-0.87	296.59
Rachana Infra	36.85	2.99	35.78	Ruby Mills	218.2	-0.71	219.76
Platinum Indust	293.85	2.20	287.52	Cosmo First	868.2	-0.64	873.83
SPML Infra	225.25	2.07	220.68	Esconet Technol	219.25	-0.60	220.57
TGB Banquets	11.96	1.70	11.76	Indiamart Inter	2327.5	-0.57	2340.9
South West Pinn	134.89	1.60	132.77	Alkyl Amines	1900	-0.44	1908.4
Jullundur Motor	91	1.52	89.64	Alembic Pharma	931.6	-0.42	935.57
Shriram Propert	89.05	1.48	87.75	NBI Industrial	2567	-0.37	2576.63
Touchwood Enter	102.7	1.46	101.22	Power Grid Corp	288.5	-0.34	289.48
Orissa Minerals	5370.8	1.44	5294.3	Bajaj Holdings	12597	-0.29	12633.31
DAM Capital Adv	254.59	1.36	251.17	Timken	2928.1	-0.26	2935.78
TITAGARH	883.8	1.31	872.41	Gillette India	9327	-0.25	9350.41

\* Stocks crossing above its Simple Moving Average (200DMA)

\* Stocks crossing below its Simple Moving Average (200DMA)

Sectoral Indices - Gainers Losers for the day



Stocks witnessing a volume surge as compared to their 5 day average volume

Watch out for the stocks that have seen a huge spurt in its share price over the last three days

Volume Shockers - NSE					
Company name	LCP	% Chg	Volume	Avg Vol *	% Chg
Dhunseri Tea	164.55	11.32	401650	2822	14134
Suraj	333.2	14.68	339375	2690	12515
Dhunseri Ventur	332	12.12	1666922	16264	10149
Rajratan Global	385.4	18.42	4443512	57738	7596
DCB Bank	145.28	12.59	49204992	839768	5759
Krishival Foods	488.1	0.81	63056	1200	5155
GFL	70.49	10.42	1556917	41697	3634
Digikore Studio	151	4.03	123600	3600	3333
Shanthi Gears	531.2	3.77	587217	19786	2868
R M Drip & Spri	69.77	0.59	243808	9800	2388
JK Tyre & Ind	418.5	7.24	9934326	402010	2371
Bharat Rasayan	10187	3.73	86162	3631	2273
Priti Internati	75.4	-3	409069	18097	2160
Atal	23.97	1.44	2121100	100889	2002
Ceat	4170.5	11.74	4388499	221860	1878
Bhageria Indu	189.38	9.61	4170042	256334	1527
Indo Farm Equip	248.49	4.93	7385889	474014	1458
Univa Foods	12.93	0	73273	5051	1351
Indo Rama Synth	68.16	13.03	4660065	325707	1331
Tarmat	54.39	0.65	782151	54848	1326

\* the Average Volume of last 5 days

Price Shockers - NSE				
Company name	LCP	Prv Close	% Chg	Volume
Hybrid Fin Ser	28.9	17.51	65.05	819678
Guj Raffia Ind	71.08	44.88	58.38	143626
Share India	207.59	148.92	39.4	17581984
SEL Mgf Company	39.34	29.57	33.04	45310
Rajratan Global	384.8	312.1	23.29	4493466
GFL	70.51	59.4	18.7	1569355
Sharp Chucks	121	102.3	18.28	117000
Indo Rama Synth	68.19	57.7	18.18	4715986
Ceat	4169	3555.3	17.26	4414060
Aartech Solonic	59.86	51.44	16.37	315481
Huhtamaki India	265.14	227.97	16.3	542935
BLS Internation	323.45	278.55	16.12	9573147
Kalyani Invest	5642.6	4869.7	15.87	26765
BGR Energy	423.99	366.27	15.76	388986
Mcleod	60.9	52.61	15.76	537696
Reliable Data S	136.48	117.91	15.75	30731
Moxsh Overseas	51	44.1	15.65	6400
SAL Steel	32.34	27.98	15.58	64867
Priti Internati	75	64.89	15.58	411175
MCON Rasayan	66.65	57.75	15.41	12000

\* the % price rise of the last 3 days



Nifty 50 stocks - Summary Details											
Symbol	LTP	Chng	% Chng	Volume (lacs)	Turnover (crs.)	52w High	Diff with 52w H	52w Low	Diff with 52w L	365 days % chng	30 days % chng
NIFTY 50	25843.15	133.30	0.52%	3011.29	29636.66	25926.20	0.32%	21743.65	18.85%	1.87%	2.96%
ADANIENT	2550.00	0.60	0.02%	7.47	190.97	3100.00	17.74%	2025.00	25.93%	6.25%	-17.39%
ADANIPTS	1464.90	-14.50	-0.98%	26.60	392.09	1494.00	1.95%	995.65	47.13%	5.06%	5.39%
APOLLOHOSP	8013.50	112.00	1.42%	4.99	399.08	8065.00	0.64%	6001.00	33.54%	0.62%	11.74%
ASIANPAINT	2516.00	8.20	0.33%	7.15	180.11	3085.00	18.44%	2124.75	18.41%	1.08%	-18.63%
AXISBANK	1225.00	24.80	2.07%	74.19	908.96	1247.00	1.76%	933.50	31.23%	7.05%	4.08%
BAJAJ-AUTO	9115.50	-35.00	-0.38%	3.04	278.08	11287.35	19.24%	7089.35	28.58%	0.86%	-21.23%
BAJAJFINSV	2141.80	58.10	2.79%	18.45	393.36	2149.50	0.36%	1551.65	38.03%	0.16%	11.90%
BAJFINANCE	1081.50	11.40	1.07%	57.01	616.37	1086.50	0.46%	645.10	67.65%	6.66%	-84.62%
BEL	416.50	3.70	0.90%	105.80	439.76	436.00	4.47%	240.25	73.36%	2.46%	44.49%
BHARTIARTL	2050.00	38.00	1.89%	73.87	1508.99	2057.00	0.34%	1511.00	35.67%	3.74%	16.04%
CIPLA	1643.00	65.40	4.15%	33.73	545.75	1647.00	0.24%	1335.00	23.07%	1.19%	0.99%
COALINDIA	390.50	1.70	0.44%	40.07	156.47	497.25	21.47%	349.25	11.81%	-1.77%	-21.57%
DRREDDY	1285.00	29.10	2.32%	13.68	174.78	1405.90	8.60%	1020.00	25.98%	-4.16%	-81.29%
EICHERMOT	7012.00	-30.50	-0.43%	3.26	229.63	7122.50	1.55%	4508.75	55.52%	1.66%	50.54%
ETERNAL	338.45	-4.20	-1.23%	254.82	865.41	368.45	8.14%	194.80	73.74%	4.69%	#VALUE!
GRASIM	2857.50	21.30	0.75%	3.75	106.94	2911.00	1.84%	2276.95	25.50%	-0.24%	2.61%
HCLTECH	1496.00	9.80	0.66%	23.55	352.89	2012.20	25.65%	1302.75	14.83%	0.21%	-20.32%
HDFCBANK	1003.60	1.05	0.10%	221.95	2230.77	1020.00	1.61%	812.15	23.57%	3.69%	-41.02%
HDFCLIFE	743.00	-2.95	-0.40%	23.62	175.34	820.75	9.47%	584.30	27.16%	-3.67%	2.63%
HINDALCO	787.35	14.55	1.88%	48.45	379.15	790.60	0.41%	546.45	44.08%	2.23%	5.42%
HINDUNILVR	2601.10	-2.60	-0.10%	10.11	263.15	2782.00	6.50%	2136.00	21.77%	0.88%	-6.38%
ICICIBANK	1393.00	-43.60	-3.03%	233.30	3270.03	1500.00	7.13%	1186.00	17.45%	1.06%	15.56%
INDIGO	5935.00	87.00	1.49%	4.01	237.79	6232.50	4.77%	3780.00	57.01%	2.10%	24.43%
INFY	1462.70	21.60	1.50%	69.94	1021.26	2006.45	27.10%	1307.00	11.91%	-4.65%	-24.95%
ITC	412.60	0.45	0.11%	130.84	540.30	495.00	16.65%	390.15	5.75%	-0.23%	-16.43%
JIOFIN	311.00	1.70	0.55%	148.83	465.63	347.35	10.46%	198.65	56.56%	-1.95%	-7.30%
JSWSTEEL	1147.90	-15.40	-1.32%	12.14	139.74	1178.80	2.62%	880.00	30.44%	4.31%	17.58%
KOTAKBANK	2206.90	1.10	0.05%	30.41	675.35	2301.90	4.13%	1679.05	31.44%	9.11%	17.56%
LT	3872.00	32.60	0.85%	12.23	473.38	3963.50	2.31%	2965.30	30.58%	4.68%	8.68%
M&M	3596.70	-50.50	-1.38%	28.27	1026.53	3723.80	3.41%	2425.00	48.32%	1.09%	18.88%
MARUTI	16400.00	-1.00	-0.01%	3.74	614.72	16549.00	0.90%	10725.00	52.91%	5.32%	32.44%
MAXHEALTH	1208.60	5.90	0.49%	21.34	258.06	1314.30	8.04%	888.90	35.97%	3.80%	24.74%
NESTLEIND	1286.00	-3.50	-0.27%	12.47	160.46	1311.60	1.95%	1055.00	21.90%	7.08%	-47.63%
NTPC	341.80	0.80	0.23%	68.97	236.02	428.75	20.28%	292.80	16.73%	1.78%	-19.62%
ONGC	248.50	0.81	0.33%	109.20	270.41	287.60	13.60%	205.00	21.22%	5.36%	-13.21%
POWERGRID	287.95	-1.80	-0.62%	135.37	390.90	345.40	16.63%	247.30	16.44%	0.49%	-11.45%
RELIANCE	1467.90	51.10	3.61%	247.22	3613.74	1551.00	5.36%	1114.85	31.67%	0.82%	-47.68%
SBILIFE	1839.00	-5.10	-0.28%	5.90	108.61	1912.00	3.82%	1372.55	33.98%	1.39%	6.36%
SBIN	907.00	17.85	2.01%	135.46	1226.37	913.65	0.73%	680.00	33.38%	6.93%	10.39%
SHRIRAMFIN	692.10	16.60	2.46%	61.70	426.00	717.50	3.54%	493.35	40.29%	9.29%	-80.08%
SUNPHARMA	1687.60	8.50	0.51%	16.48	278.57	1923.65	12.27%	1548.00	9.02%	4.26%	-11.56%
TATACONSUM	1180.00	14.00	1.20%	17.51	205.84	1187.50	0.63%	882.90	33.65%	6.77%	4.67%
TATAMOTORS	399.60	3.00	0.76%	104.71	418.51	917.70	56.46%	376.30	6.19%	-44.40%	-56.30%
TATASTEEL	172.10	-0.12	-0.07%	180.50	310.24	177.82	3.22%	122.62	40.35%	0.12%	10.94%
TCS	3016.30	54.10	1.83%	31.33	942.27	4494.90	32.90%	2866.60	5.22%	-5.83%	-27.66%
TECHM	1446.00	13.40	0.94%	18.01	260.36	1807.70	20.01%	1209.40	19.56%	-5.48%	-12.81%
TITAN	3737.90	63.10	1.72%	7.08	262.94	3749.90	0.32%	2925.00	27.79%	3.32%	5.87%
TRENT	4801.00	-13.40	-0.28%	6.11	293.19	7880.05	39.07%	4488.00	6.97%	-6.47%	-38.32%
ULTRACEMCO	12365.00	-5.00	-0.04%	3.93	483.54	13097.00	5.59%	10047.85	23.06%	-1.65%	9.25%
WIPRO	241.43	0.53	0.22%	98.72	237.86	324.60	25.62%	228.00	5.89%	-5.16%	-54.73%

## Disclaimer / Disclosures

### ANALYST CERTIFICATION

I, Mrs. Vaishali Parekh B.com, Research Analyst, author and the name subscribed to this report, hereby certify that all of the views expressed in this research report accurately reflect our views about the subject issuer(s) or securities. We also certify that no part of our compensation was, is, or will be directly or indirectly related to the specific recommendation(s) or view(s) in this report.

Terms & conditions and other disclosures:

Prabhudas Lilladher Pvt. Ltd, Mumbai, India (hereinafter referred to as "PL") is engaged in the business of Stock Broking, Portfolio Manager, Depository Participant and distribution for third party financial products. PL is a subsidiary of Prabhudas Lilladher Advisory Services Pvt Ltd. which has its various subsidiaries engaged in business of commodity broking, investment banking, financial services (margin funding) and distribution of third party financial/other products, details in respect of which are available at [www.plindia.com](http://www.plindia.com)

This document has been prepared by the Research Division of PL and is meant for use by the recipient only as information and is not for circulation. This document is not to be reported or copied or made available to others without prior permission of PL. It should not be considered or taken as an offer to sell or a solicitation to buy or sell any security.

The information contained in this report has been obtained from sources that are considered to be reliable. However, PL has not independently verified the accuracy or completeness of the same. Neither PL nor any of its affiliates, its directors or its employees accepts any responsibility of whatsoever nature for the information, statements and opinion given, made available or expressed herein or for any omission therein.

Recipients of this report should be aware that past performance is not necessarily a guide to future performance and value of investments can go down as well. The suitability or otherwise of any investments will depend upon the recipient's particular circumstances and, in case of doubt, advice should be sought from an independent expert/advisor.

Either PL or its affiliates or its directors or its employees or its representatives or its clients or their relatives may have position(s), make market, act as principal or engage in transactions of securities of companies referred to in this report and they may have used the research material prior to publication.

PL may from time to time solicit or perform investment banking or other services for any company mentioned in this document.

PL is registered as Research Analyst under Securities and Exchange Board of India (Research Analysts) Regulations, 2014 PL submits that no material disciplinary action has been taken on us by any Regulatory Authority impacting Equity Research Analysis activities.

PL or its research analysts or its associates or his relatives do not have any financial interest in the subject company.

PL or its research analysts or its associates or his relatives do not have actual/beneficial ownership of one per cent or more securities of the subject company at the end of the month immediately preceding the date of publication of the research report.

PL or its research analysts or its associates or his relatives do not have any material conflict of interest at the time of publication of the research report.

PL or its associates might have received compensation from the subject company in the past twelve months.

PL or its associates might have managed or co-managed public offering of securities for the subject company in the past twelve months or mandated by the subject company for any other assignment in the past twelve months.

PL or its associates might have received any compensation for investment banking or merchant banking or brokerage services from the subject company in the past twelve months.

PL or its associates might have received any compensation for products or services other than investment banking or merchant banking or brokerage services from the subject company in the past twelve months PL or its associates might have received any compensation or other benefits from the subject company or third party in connection with the research report.

PL encourages independence in research report preparation and strives to minimize conflict in preparation of research report. PL or its analysts did not receive any compensation or other benefits from the subject Company or third party in connection with the preparation of the research report. PL or its Research Analysts do not have any material conflict of interest at the time of publication of this report.

It is confirmed that Mrs.Vaishali Parekh B.com, Research Analyst of this report has not received any compensation from the companies mentioned in the report in the preceding twelve months compensation of our Research Analysts is not based on any specific merchant banking, investment banking or brokerage service transactions.

The Research analysts for this report certifies that all of the views expressed in this report accurately reflect his or her personal views about the subject company or companies and its or their securities, and no part of his or her compensation was, is or will be, directly or indirectly related to specific recommendations or views expressed in this report.

The research analysts for this report has not served as an officer, director or employee of the subject company PL or its research analysts have not engaged in market making activity for the subject company

Our sales people, traders, and other professionals or affiliates may provide oral or written market commentary or trading strategies to our clients that reflect opinions that are contrary to the opinions expressed herein, and our proprietary trading and investing businesses may make investment decisions that are inconsistent with the recommendations expressed herein. In reviewing these materials, you should be aware that any or all of the foregoing, among other things, may give rise to real or potential conflicts of interest.

PL and its associates, their directors and employees may (a) from time to time, have a long or short position in, and buy or sell the securities of the subject company or (b) be engaged in any other transaction involving such securities and earn brokerage or other compensation or act as a market maker in the financial instruments of the subject company or act as an advisor or lender/borrower to the subject company or may have any other potential conflict of interests with respect to any recommendation and other related information and opinions.