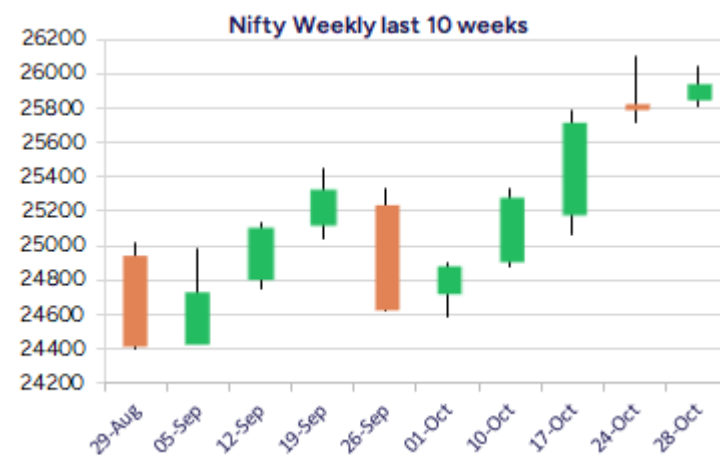
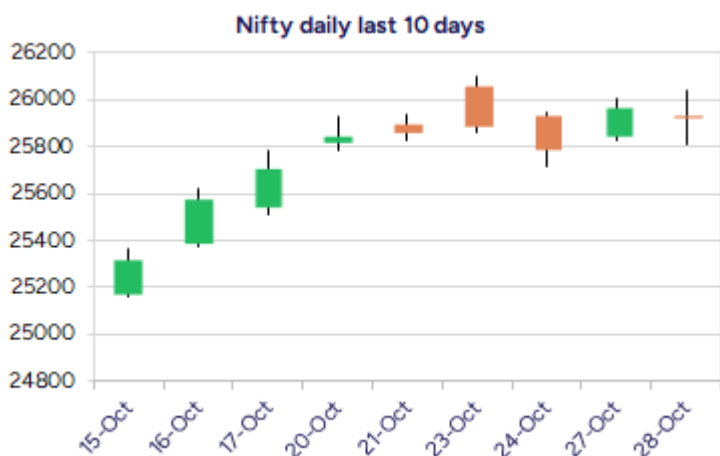


Date: 29th October 2025

* Sensex 84628.16 -150.68

* Nifty 25936.20 -29.85

* Bank Nifty 58214.10 +99.85



*Blue candle → Close rate > Open rate * Red candle → Close rate < Open rate

Market Preview

Nifty consolidates amid volatility

Nifty witnessed fluctuations resisting near the 26000 zone on the monthly expiry day of the F&O segment to end near the 25950 zone with bias maintained intact. BankNifty witnessed consolidation maintaining the bias positive and sustaining above the 58000 zone to anticipate for further upward move in the coming days. The market breadth was slightly on the negative side with the advance decline indicating a ratio of 2:3 at close.

Market Forecast

Nifty daily range 25800 - 26200

Nifty witnessed a volatile session finding resistance near the 26000 zone and amid fluctuations hit the low of 25800 level on the monthly expiry day to finally close near the 25950 level with bias maintained with a cautiously positive approach. As mentioned earlier, the index having the important support positioned near the 25400 zone would need a decisive breach above the 26000 zone to trigger for fresh upward move having near-term targets of 26300 and 26700 levels in the coming days.

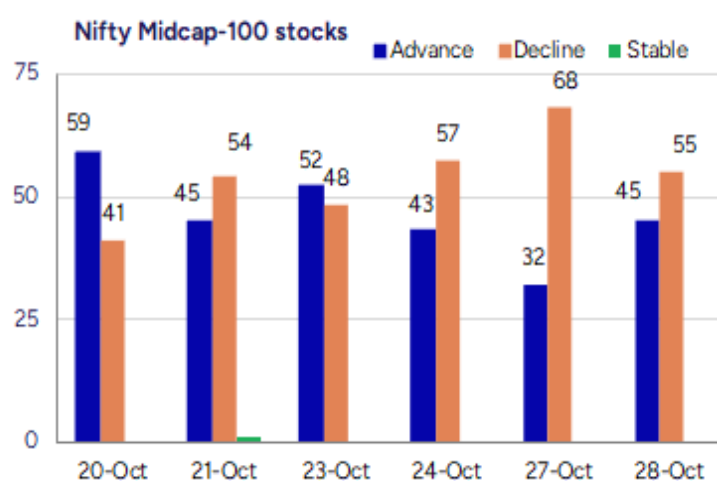
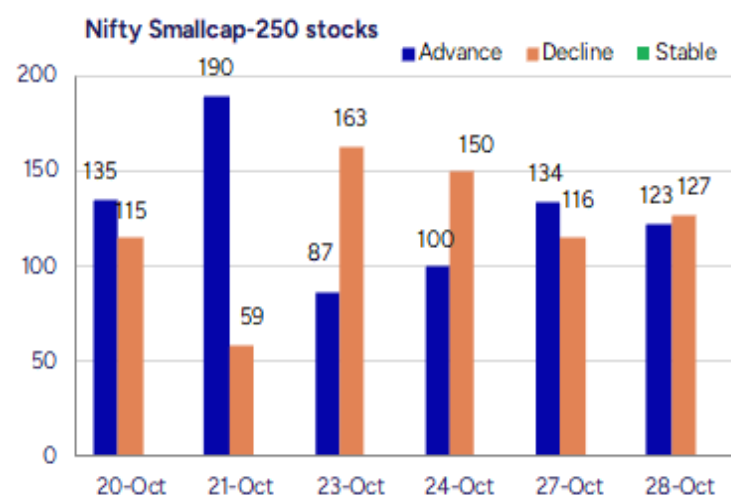
BankNifty amid fluctuations resisted near the 58300 zone and recovering from 57800 level to close near the 58200 level with consolidation visible since the last 3-4 sessions. With the overall bias maintained positive, the index would have the next target of 60000 level expected once the level of 58600 zone is breached above to establish conviction. On the downside, as mentioned earlier, the near-term support near 57300 zone would be crucial which needs to be sustained to maintain the overall trend intact.

The support for the day is seen at 25800 levels, while the resistance is seen at 26200 levels. BankNifty would have the daily range of 57800-58800 levels.

Indices	Period	Closing	% Chng	Trend	Reversal	2 Sup	1 Sup	Pivot	1 Res	2 Res
Nifty	Daily	25936.20	-0.11%	-1	25973.50	25698	25817	25929	26049	26161
	Weekly	25795.15	0.33%	3	25455.70	25488	25642	25873	26026	26257
	Monthly	24611.10	0.75%	-2	25016.70	23820	24215	24828	25224	25837
Bank Nifty	Daily	58214.10	0.17%	-3	58362.75	57556	57885	58099	58428	58643
	Weekly	57699.60	-0.02%	4	56601.30	56828	57264	57919	58355	59011
	Monthly	54635.85	1.83%	-2	56782.20	52417	53526	54680	55789	56942
Sensex	Daily	84628.16	-0.18%	-1	84870.95	83844	84236	84611	85004	85379
	Weekly	84211.88	0.31%	3	82993.35	83159	83685	84486	85013	85814
	Monthly	80267.62	0.57%	-3	82019.05	77784	79026	81071	82312	84357

Gainers - Losers (Nifty 500 Stocks)

Gainers				Losers			
Company Name	Last Price	% Gain	Volume	Company Name	Last Price	% Loss	Volume
Newgen Software	996.55	11.19	9589387	Vodafone Idea	9.44	-5.32	1456935645
Chennai Petro	836.5	8.66	13156249	Supreme Ind	3814.2	-4.67	1649586
Netweb	4206.8	7.95	4618239	Sterling Wilson	221.89	-4.2	3398454
Kirloskar Oil	1005.7	6.84	3995688	Bata India	1117.3	-4.19	1161888
IDBI Bank	102.18	6.69	94480426	Shipping Corp	261.81	-3.63	9518939
Syrma SGS	802.25	6.27	6476920	BSE Limited	2419.7	-3.61	5690046
R R Kabel	1403.9	5.76	1320017	Transformers	455.55	-3.53	1216274



Nifty Daily chart with RSI indicator



BankNifty Daily chart with RSI indicator



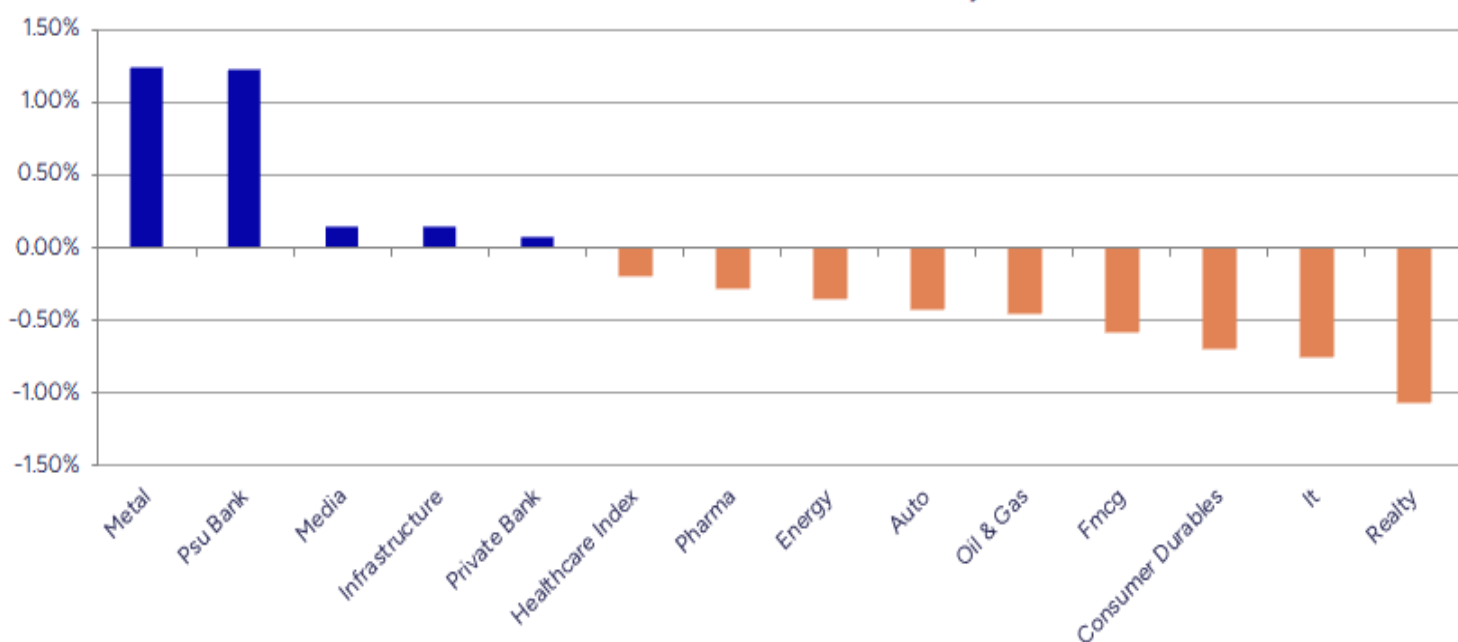
Breakouts - Cross above 200 DMA			
Company Name	LCP	Change %	200 DMA
TTK Prestige	716.15	9.40	654.6
Muthoot Cap	294.35	2.90	286.06
Tamil Newsprint	158.7	2.78	154.4
Electro Force	45	2.62	43.85
MMP Industries	275.4	2.38	269
AMJ Land	56.74	2.31	55.46
Greaves Cotton	223.68	2.17	218.92
Swan Corp	472.35	1.96	463.29
Utssav CZ Gold	221.05	1.93	216.87
Cords Cable Ind	184.35	1.67	181.33
Arvind Port	62.65	1.61	61.66
Womancart	287	1.59	282.51
Worth Periphera	156.13	1.34	154.07
Balu Forge Indu	630.65	1.29	622.61
Fidel Softech	170	1.26	167.89
Vinsys IT	390	1.05	385.95
Texmaco Infra	102.82	0.78	102.02
Nucleus Softwar	1016.15	0.57	1010.36

* Stocks crossing above its Simple Moving Average (200DMA)

Breakdown - Cross below 200 DMA			
Company Name	LCP	Change %	200 DMA
Shankar Lal Ram	67.45	-2.74	69.35
Wise Travel	154.15	-2.49	158.08
Metro	1145.6	-2.22	1171.66
Phantom Digital	233.55	-2.19	238.78
Pearl Global In	1315.6	-1.96	1341.91
Sportking India	100.21	-1.90	102.15
Brigade Ent	1011.05	-1.78	1029.36
Prakash Ind	160.73	-1.54	163.25
Lexus Granito	33.36	-1.36	33.82
Aristo Bio-Tech	125.05	-1.29	126.68
Sudarshan Chem	1163	-1.13	1176.27
Crest Ventures	383.9	-1.04	387.93
SCI Land and As	50.94	-0.95	51.43
Raymond Lifesty	1192.7	-0.93	1203.95
Lovable Lingeri	95.43	-0.91	96.31
Kross	182.74	-0.90	184.4
Trejhara	215.68	-0.82	217.46
Saksoft	190.23	-0.81	191.79

* Stocks crossing below its Simple Moving Average (200DMA)

Sectoral Indices - Gainers Losers for the day



Stocks witnessing a volume surge as compared to their 5 day average volume

Watch out for the stocks that have seen a huge spurt in its share price over the last three days

Volume Shockers - NSE					
Company name	LCP	% Chg	Volume	Avg Vol *	% Chg
TTK Prestige	716.15	10.7	3343177	15464	21519
Suraj Estate	302.05	8.28	10803873	81172	13210
R M Drip & Spri	79.86	0.03	398272	9800	3964
Sun Pharma Adv	142.23	6.73	7843099	202314	3777
Sai Silks	200.35	2.28	72880866	1920949	3694
Precision Wires	221.95	5.33	11088377	305186	3533
Remsons Ind	141.08	8.82	2994306	87158	3336
Krishival Foods	490.95	-0.03	36674	1200	2956
Netweb	4206.8	7.95	4618239	163390	2727
Kirloskar Oil	1005.7	6.84	3995688	164951	2322
Cartrade	3135.2	17.63	5406531	234043	2210
Tamil Newsprint	158.7	2.89	1547921	80416	1825
KCK Industries	33.85	-4.92	247500	13600	1720
Newgen Software	996.55	11.19	9589387	527607	1718
Cool Caps	82.8	1.41	152500	8400	1715
TPL Plastech	70.99	4.17	515627	30509	1590
BMW Ventures	67.15	9.38	4022428	243806	1550
Bata India	1117.3	-4.19	1161888	84824	1270
BEW Engineering	130.55	-1.69	15000	1125	1233
Syrma SGS	802.25	6.27	6476920	501243	1192

* the Average Volume of last 5 days

Price Shockers - NSE				
Company name	LCP	Prv Close	% Chg	Volume
Bharat Wire Rop	219.38	172.29	27.33	12721836
Bhagyanagar Ind	126.56	100.28	26.21	4256646
Hatsun Agro	1122.6	903.55	24.24	2683517
CarTrade Tech	3135.2	2545.4	23.17	5406531
Drone Desti	88	73.45	19.81	84500
Womancart	287	241	19.09	122000
IFB Agro	1330.9	1133	17.47	315827
Muthoot Cap	294.35	254.45	15.68	354874
Aaron Industrie	218.52	189.4	15.37	137248
Arvind Port	62.65	54.6	14.74	120000
Radiowalla Netw	72	62.8	14.65	17600
Essar Shipping	36.45	32.12	13.48	2740725
Remsons Ind	141.08	124.53	13.29	2994306
Sampann Utpadan	37.69	33.57	12.27	452038
InfoBeans Tech	594.45	531.2	11.91	227901
Kirloskar Oil	1005.7	899.3	11.83	3995688
Newgen Software	996.55	892.75	11.63	9589387
TTK Prestige	716.15	644.9	11.05	3343177
Pavna Ind	39.2	35.31	11.02	0
BAG Convergence	125.55	113.35	10.76	46400

* the % price rise of the last 3 days

Nifty 50 Stocks - Summary Details											
Symbol	LTP	Chng	% Chng	Volume (lacs)	Turnover (crs.)	52w High	Diff with 52w H	52w Low	Diff with 52w L	365 days % chng	30 days % chng
NIFTY 50	25936.20	-29.85	-0.11%	3952.31	37023	26104	0.64%	21744	19.28%	5.20%	7.26%
ADANIENT	2499.00	6.20	0.25%	6.27	157	3070	18.60%	2025	23.41%	-1.94%	-7.39%
ADANIPTS	1418.90	-1.70	-0.12%	20.68	294	1494	5.03%	996	42.51%	1.86%	7.52%
APOLLOHOSP	7861.50	16.00	0.20%	3.48	274	8100	2.94%	6001	31.00%	4.93%	13.47%
ASIANPAINT	2501.20	-17.60	-0.70%	11.04	277	3028	17.40%	2125	17.72%	7.11%	-15.17%
AXISBANK	1247.00	-7.10	-0.57%	81.47	1015	1276	2.28%	934	33.58%	8.00%	4.79%
BAJAJ-AUTO	9057.00	-38.50	-0.42%	4.60	417	10293	12.01%	7089	27.76%	4.09%	-11.25%
BAJAJFINSV	2138.10	-32.10	-1.48%	12.01	257	2195	2.59%	1552	37.80%	6.84%	25.35%
BAJFINANCE	1075.95	-8.45	-0.78%	123.24	1321	1103	2.41%	645	66.79%	8.90%	-84.48%
BEL	413.85	-1.30	-0.31%	122.48	506	436	5.08%	240	72.26%	4.46%	51.85%
BHARTIARTL	2088.00	7.90	0.38%	98.92	2067	2103	0.69%	1511	38.19%	9.06%	25.46%
CIPLA	1570.00	-14.00	-0.88%	14.89	234	1673	6.16%	1335	17.60%	4.58%	5.32%
COALINDIA	391.50	-5.20	-1.31%	76.72	302	460	14.81%	349	12.10%	0.58%	-15.12%
DRREDDY	1293.90	9.60	0.75%	18.28	235	1406	7.97%	1020	26.85%	2.90%	-80.21%
EICHERMOT	6985.50	79.00	1.14%	4.85	338	7123	1.92%	4534	54.08%	-0.63%	52.51%
ETERNAL	335.00	1.30	0.39%	287.23	960	368	9.08%	195	71.97%	4.24%	#VALUE!
GRASIM	2931.00	7.10	0.24%	10.57	310	2960	0.97%	2277	28.72%	6.78%	12.15%
HCLTECH	1522.00	-11.50	-0.75%	19.36	295	2012	24.36%	1303	16.83%	9.09%	-17.83%
HDFCBANK	1004.90	1.95	0.19%	339.04	3394	1021	1.53%	812	23.73%	6.19%	-42.44%
HDFCLIFE	747.00	9.75	1.32%	38.59	287	821	8.99%	584	27.85%	-2.28%	5.29%
HINDALCO	849.75	8.90	1.06%	80.11	681	860	1.18%	546	55.50%	14.13%	25.08%
HINDUNILVR	2500.00	-11.80	-0.47%	22.95	573	2750	9.09%	2136	17.04%	-0.59%	-1.22%
ICICIBANK	1366.20	-11.40	-0.83%	264.78	3606	1500	8.92%	1186	15.19%	0.26%	8.57%
INDIGO	5834.50	-0.50	-0.01%	9.50	550	6233	6.39%	3780	54.35%	4.46%	33.05%
INFY	1502.20	-2.30	-0.15%	82.11	1230	2006	25.13%	1307	14.93%	3.54%	-19.43%
ITC	417.85	-2.80	-0.67%	171.63	717	493	15.32%	390	7.10%	3.16%	-13.35%
JIOFIN	308.40	2.85	0.93%	112.36	345	347	11.21%	199	55.25%	4.09%	-1.04%
JSWSTEEL	1183.00	32.40	2.82%	34.51	405	1186	0.29%	880	34.43%	4.72%	25.46%
KOTAKBANK	2163.80	15.20	0.71%	46.61	1005	2302	6.00%	1679	28.87%	8.32%	22.16%
LT	3981.60	57.80	1.47%	33.92	1341	3986	0.11%	2965	34.27%	6.52%	19.43%
M&M	3581.00	-30.60	-0.85%	28.51	1024	3724	3.83%	2425	47.67%	5.38%	31.54%
MARUTI	16309.00	-79.00	-0.48%	3.83	627	16660	2.11%	10725	52.07%	0.15%	41.80%
MAXHEALTH	1187.90	1.50	0.13%	18.11	214	1314	9.62%	936	26.88%	5.01%	25.77%
NESTLEIND	1271.00	-12.00	-0.94%	13.44	171	1312	3.10%	1055	20.47%	9.32%	-43.78%
NTPC	338.95	-2.80	-0.82%	131.87	448	415	18.41%	293	15.76%	0.37%	-14.98%
ONGC	250.49	-2.78	-1.10%	85.30	214	274	8.70%	205	22.19%	5.26%	-5.12%
POWERGRID	288.50	-2.55	-0.88%	135.43	392	345	16.47%	247	16.66%	2.13%	-8.72%
RELIANCE	1489.70	5.60	0.38%	176.32	2618	1551	3.95%	1115	33.62%	7.93%	-44.01%
SBILIFE	1934.00	30.90	1.62%	21.67	418	1946	0.60%	1373	40.91%	7.67%	19.80%
SBIN	930.50	7.75	0.84%	220.66	2046	936	0.57%	680	36.84%	8.55%	19.12%
SHRIRAMFIN	724.00	4.40	0.61%	70.72	509	730	0.86%	493	46.75%	19.41%	-76.60%
SUNPHARMA	1692.80	-0.80	-0.05%	24.41	412	1923	11.96%	1548	9.35%	6.32%	-9.32%
TATACONSUM	1165.80	-4.10	-0.35%	8.43	98	1191	2.13%	883	32.04%	4.46%	20.13%
TATASTEEL	181.65	4.99	2.82%	595.12	1075	182	0.23%	123	48.14%	8.61%	24.65%
TCS	3059.80	-25.10	-0.81%	34.71	1062	4495	31.93%	2867	6.74%	5.48%	-24.64%
TECHM	1446.30	-16.50	-1.13%	14.33	207	1808	19.99%	1209	19.59%	2.82%	-15.67%
TITAN	3737.00	-2.80	-0.07%	14.83	551	3800	1.66%	2925	27.76%	11.71%	13.79%
TMPV	412.40	2.35	0.57%	103.32	425	887	53.49%	376	9.59%	#VALUE!	#VALUE!
TRENT	4733.00	-65.70	-1.37%	6.17	293	7493	36.83%	4488	5.46%	0.99%	-35.81%
ULTRACEMCO	11940.00	-75.00	-0.62%	5.13	613	13097	8.83%	10048	18.83%	-1.15%	8.51%
WIPRO	242.70	-1.21	-0.50%	87.81	213	325	25.23%	228	6.45%	2.81%	-55.40%

Disclaimer / Disclosures

ANALYST CERTIFICATION

I, Mrs. Vaishali Parekh B.com, Research Analyst, author and the name subscribed to this report, hereby certify that all of the views expressed in this research report accurately reflect our views about the subject issuer(s) or securities. We also certify that no part of our compensation was, is, or will be directly or indirectly related to the specific recommendation(s) or view(s) in this report.

Terms & conditions and other disclosures:

Prabhudas Lilladher Pvt. Ltd, Mumbai, India (hereinafter referred to as "PL") is engaged in the business of Stock Broking, Portfolio Manager, Depository Participant and distribution for third party financial products. PL is a subsidiary of Prabhudas Lilladher Advisory Services Pvt Ltd. which has its various subsidiaries engaged in business of commodity broking, investment banking, financial services (margin funding) and distribution of third party financial/other products, details in respect of which are available at www.plindia.com

This document has been prepared by the Research Division of PL and is meant for use by the recipient only as information and is not for circulation. This document is not to be reported or copied or made available to others without prior permission of PL. It should not be considered or taken as an offer to sell or a solicitation to buy or sell any security.

The information contained in this report has been obtained from sources that are considered to be reliable. However, PL has not independently verified the accuracy or completeness of the same. Neither PL nor any of its affiliates, its directors or its employees accepts any responsibility of whatsoever nature for the information, statements and opinion given, made available or expressed herein or for any omission therein.

Recipients of this report should be aware that past performance is not necessarily a guide to future performance and value of investments can go down as well. The suitability or otherwise of any investments will depend upon the recipient's particular circumstances and, in case of doubt, advice should be sought from an independent expert/advisor.

Either PL or its affiliates or its directors or its employees or its representatives or its clients or their relatives may have position(s), make market, act as principal or engage in transactions of securities of companies referred to in this report and they may have used the research material prior to publication.

PL may from time to time solicit or perform investment banking or other services for any company mentioned in this document.

PL is registered as Research Analyst under Securities and Exchange Board of India (Research Analysts) Regulations, 2014 PL submits that no material disciplinary action has been taken on us by any Regulatory Authority impacting Equity Research Analysis activities.

PL or its research analysts or its associates or his relatives do not have any financial interest in the subject company.

PL or its research analysts or its associates or his relatives do not have actual/beneficial ownership of one per cent or more securities of the subject company at the end of the month immediately preceding the date of publication of the research report.

PL or its research analysts or its associates or his relatives do not have any material conflict of interest at the time of publication of the research report.

PL or its associates might have received compensation from the subject company in the past twelve months.

PL or its associates might have managed or co-managed public offering of securities for the subject company in the past twelve months or mandated by the subject company for any other assignment in the past twelve months.

PL or its associates might have received any compensation for investment banking or merchant banking or brokerage services from the subject company in the past twelve months.

PL or its associates might have received any compensation for products or services other than investment banking or merchant banking or brokerage services from the subject company in the past twelve months PL or its associates might have received any compensation or other benefits from the subject company or third party in connection with the research report.

PL encourages independence in research report preparation and strives to minimize conflict in preparation of research report. PL or its analysts did not receive any compensation or other benefits from the subject Company or third party in connection with the preparation of the research report. PL or its Research Analysts do not have any material conflict of interest at the time of publication of this report.

It is confirmed that Mrs.Vaishali Parekh B.com, Research Analyst of this report has not received any compensation from the companies mentioned in the report in the preceding twelve months compensation of our Research Analysts is not based on any specific merchant banking, investment banking or brokerage service transactions.

The Research analysts for this report certifies that all of the views expressed in this report accurately reflect his or her personal views about the subject company or companies and its or their securities, and no part of his or her compensation was, is or will be, directly or indirectly related to specific recommendations or views expressed in this report.

The research analysts for this report has not served as an officer, director or employee of the subject company PL or its research analysts have not engaged in market making activity for the subject company

Our sales people, traders, and other professionals or affiliates may provide oral or written market commentary or trading strategies to our clients that reflect opinions that are contrary to the opinions expressed herein, and our proprietary trading and investing businesses may make investment decisions that are inconsistent with the recommendations expressed herein. In reviewing these materials, you should be aware that any or all of the foregoing, among other things, may give rise to real or potential conflicts of interest.

PL and its associates, their directors and employees may (a) from time to time, have a long or short position in, and buy or sell the securities of the subject company or (b) be engaged in any other transaction involving such securities and earn brokerage or other compensation or act as a market maker in the financial instruments of the subject company or act as an advisor or lender/borrower to the subject company or may have any other potential conflict of interests with respect to any recommendation and other related information and opinions.