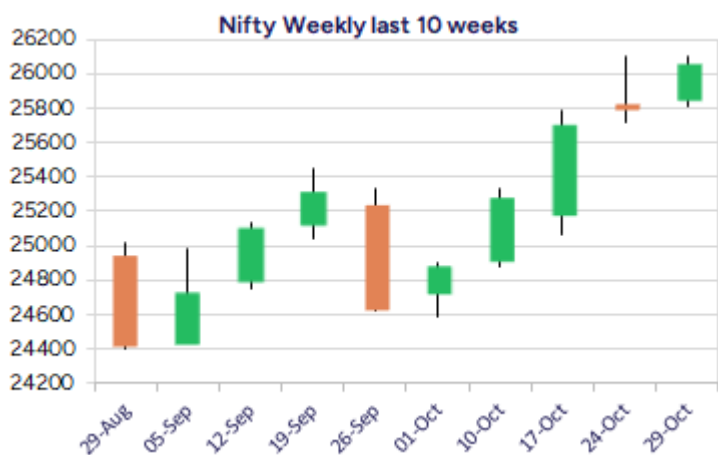
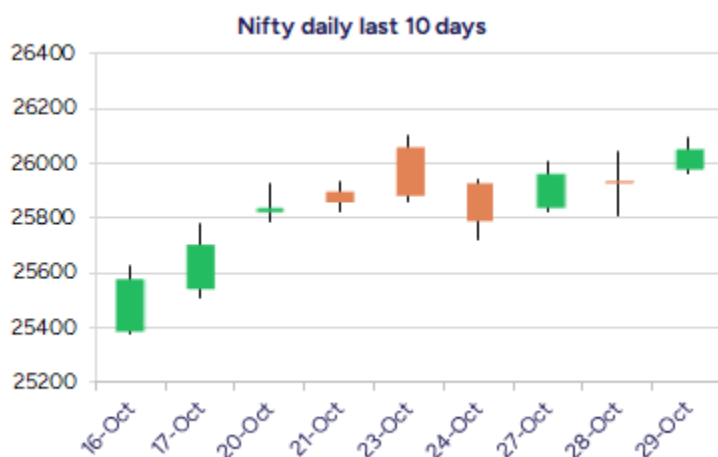


Date: 30th October 2025

* Sensex 84997.13 + 368.97

* Nifty 26053.90 + 117.70

* Bank Nifty 58385.25 + 171.15



*Blue candle → Close rate > Open rate * Red candle → Close rate < Open rate

Market Preview

Nifty gains; ends above 26000 zone

Nifty after the consolidation witnessed, gathered strength and closed above the 26000 zone which was important to improve the sentiment anticipating for further rise in the coming days. BankNifty slowly and steadily indicated a gradual pick up to improve the bias sustaining above the 58000 zone and further rise is expected in the coming days. The market breadth was strong with the advance decline indicating a ratio of 2:1 at close.

Market Forecast

Nifty daily range 25900 - 26300

Nifty once again moved past the 26000 zone with bias improving and closing above the important landmark with sentiment getting better with the broader markets also witnessing active participation along with the benchmark index anticipating for further upward movement in the coming days. The index can expect for the near-term targets of 26300 and 26700 levels in the coming days with the undertone maintained strong, as mentioned earlier, having the important support positioned near the 25400 zone which needs to be sustained.

BankNifty after taking the breather with near-term support maintained near the 57500 zone has witnessed a gradual pickup with bias getting better expecting for further having the next target of 60000 level expected in the coming days. The index has overall maintained the uptrend with most of the frontline banking stocks like HDFC Bank, SBI and Axis Bank sustaining the positive bias anticipating for further rise in the coming days.

The support for the day is seen at 25900 levels, while the resistance is seen at 26300 levels. BankNifty would have the daily range of 58000-59000 levels.

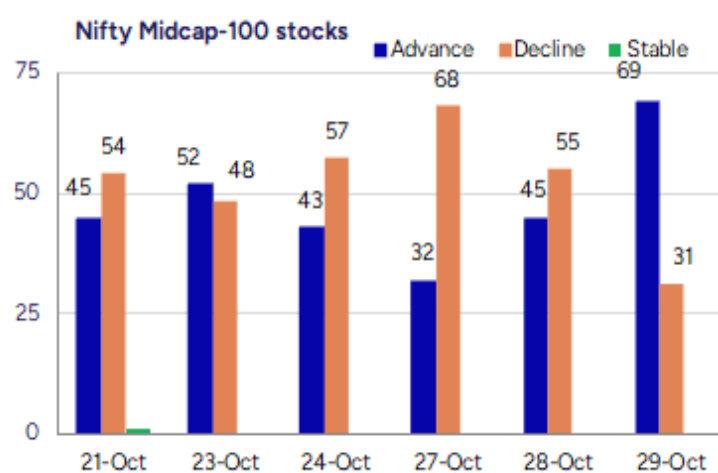
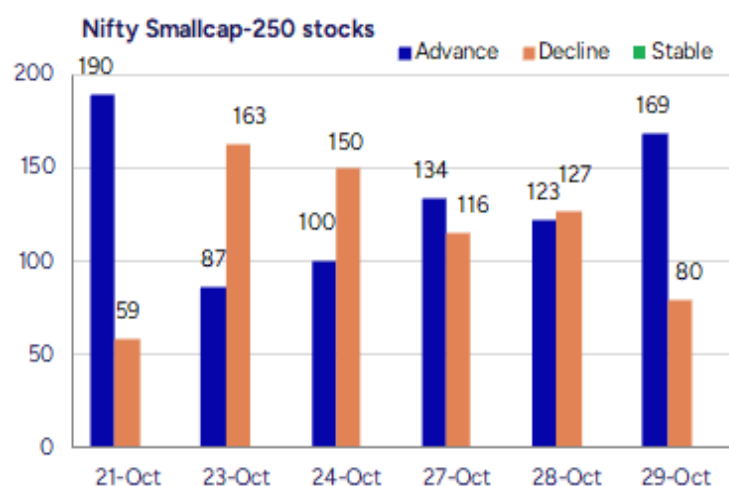
Indices	Period	Closing	% Chng	Trend	Reversal	2 Sup	1 Sup	Pivot	1 Res	2 Res
Nifty	Daily	26053.90	0.45%	1	26030.10	25900	25977	26037	26114	26175
	Weekly	25795.15	0.33%	3	25455.70	25488	25642	25873	26026	26257
	Monthly	24611.10	0.75%	-2	25016.70	23820	24215	24828	25224	25837
Bank Nifty	Daily	58385.25	0.29%	1	58371.00	57931	58158	58314	58541	58697
	Weekly	57699.60	-0.02%	4	56601.30	56828	57264	57919	58355	59011
	Monthly	54635.85	1.83%	-2	56782.20	52417	53526	54680	55789	56942
Sensex	Daily	84997.13	0.44%	1	84961.00	84447	84722	84914	85189	85381
	Weekly	84211.88	0.31%	3	82993.35	83159	83685	84486	85013	85814
	Monthly	80267.62	0.57%	-3	82019.05	77784	79026	81071	82312	84357

Gainers - Losers (Nifty 500 Stocks)
Gainers

Company Name	Last Price	% Gain	Volume
Megastar Foods	260.59	20	322849
Shanthala	31.8	20	19200
Hb Stockhol	93.69	19.99	308342
ZIM Lab	82.61	19.85	1620733
Sunrest	49	16.67	49600
Precot	508	15.86	78690
Blue Dart	6377.5	15.17	2582626

Losers

Company Name	Last Price	% Loss	Volume
Rockingdeals	203.8	-21.08	23500
Radiowalla Netw	63.4	-11.94	68800
IIFL Capital	336.4	-9.91	5127272
3i Infotech	18.53	-9.87	4073939
Nureca	262.1	-8.61	314893
Womancart	263	-8.59	262000
Gretex Corporat	228.3	-8.15	494100



Nifty Daily chart with RSI indicator



BankNifty Daily chart with RSI indicator



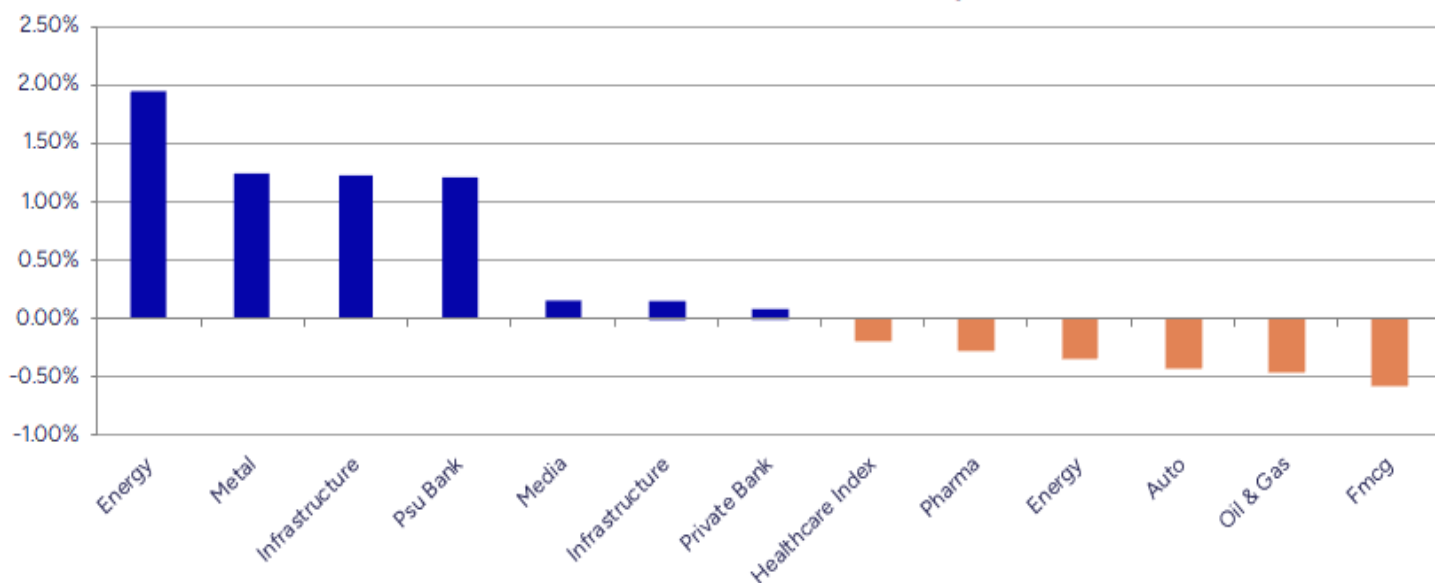
Breakouts - Cross above 200 DMA			
Company Name	LCP	Change %	200 DMA
Dredging Corp	722.65	10.51	653.95
Megastar Foods	260.59	9.83	237.26
Eurotex	15.6	8.94	14.32
Hb Stockhol	93.69	8.80	86.11
Rajgor Castor	24.6	4.33	23.58
Omfurn India	111.2	4.25	106.67
GAIL	185.88	3.91	178.89
Adani Total Gas	651.65	3.58	629.14
Aristo Bio-Tech	131.3	3.57	126.78
S H Kelkar	227.15	3.37	219.75
STC India	135.5	3.32	131.15
Precot	508	3.30	491.79
JBM Auto	677.65	2.94	658.27
Surya Roshni	294.55	2.92	286.2
Blue Dart	6382	2.79	6208.78
Harsha Engineer	410.7	2.70	399.9
Lovable Lingeri	98.7	2.64	96.16
Ruby Mills	224.25	2.60	218.56

* Stocks crossing above its Simple Moving Average (200DMA)

Breakdown - Cross below 200 DMA			
Company Name	LCP	Change %	200 DMA
Womancart	263	-6.80	282.19
Laxmi Goldorna	269.2	-2.43	275.91
Semac Construct	406.1	-2.37	415.94
Sotac Pharma	125	-2.30	127.94
Vertexplus	117.65	-1.51	119.45
Coal India	381.4	-1.20	386.02
United Nilgiri	438.6	-1.06	443.3
Arrow Greentech	619.55	-0.83	624.76
Raymond Lifesty	1190.8	-0.76	1199.93
Modison	152	-0.74	153.13
Bajaj Holdings	12584	-0.70	12673.21
WE WIN	51.71	-0.58	52.01
Nagreeka Export	29.32	-0.51	29.47
Hemisphere	139.87	-0.38	140.4
Cubex Tubings	93.67	-0.37	94.02
Texmaco Infra	101.57	-0.30	101.88
Robust Hotels	245.1	-0.28	245.78
CAMS	3855.5	-0.27	3865.8

* Stocks crossing below its Simple Moving Average (200DMA)

Sectoral Indices - Gainers Losers for the day



Stocks witnessing a volume surge as compared to their 5 day average volume

Watch out for the stocks that have seen a huge spurt in its share price over the last three days

Volume Shockers - NSE					
Company name	LCP	% Chg	Volume	Avg Vol *	% Chg
Blue Dart	6382	15.25	2586266	7128	36181
Megastar Foods	260.59	20	322849	3239	9866
Hb Stockhol	93.69	19.99	308342	4250	7156
Adani Green Ene	1124.9	12.02	31166215	480592	6385
Five-Star Busin	605.05	12.66	18704941	295334	6233
PPAP Automotive	282.79	15.11	1577041	31935	4838
Dredging Corp	722.65	11.42	3294397	79157	4062
DCM Shriram	1330.2	2.14	3287742	83149	3854
Solarworld Ener	338.4	12.97	8487602	214958	3848
Krishival Foods	498.05	1.45	39342	1200	3179
Atal	24.27	0.75	2545295	100889	2423
R M Drip & Spri	78.89	-1.21	243616	9800	2386
Cohance Life	789.65	-8.15	6132724	249599	2357
Sunrest	49	16.67	49600	2240	2114
Cello World	660.6	5.91	1820813	82395	2110
Cool Caps	83	0.24	172500	8400	1954
HP Adhesives	50.3	8.69	680775	33998	1902
UTKARSHBNK	20.74	6.47	19740577	1045115	1789
Take Solutions	22.84	1.51	2675009	149297	1692
Sapphire Foods	286.6	2.39	1213460	68650	1668

* the Average Volume of last 5 days

Price Shockers - NSE				
Company name	LCP	Prv Close	% Chg	Volume
Bhagyanagar Ind	139.57	100.28	39.18	3302697
Hatsun Agro	1148.25	903.55	27.08	318896
Drone Desti	92.4	73.45	25.8	31000
Essar Shipping	40.09	32.12	24.81	5123583
InfoBeans Tech	653.85	531.2	23.09	331144
Bharat Wire Rop	211.63	172.29	22.83	1198688
Sampann Utpadan	41.1	33.57	22.43	1480775
Arvind Port	65.75	54.6	20.42	115500
Hb Stockhol	93.69	79	18.59	308342
Connplex Cinema	235.9	202.7	16.38	229600
Megastar Foods	260.59	224.33	16.16	322849
CarTrade Tech	2955.7	2545.4	16.12	2143875
Remsons Ind	144.44	124.53	15.99	1656445
Dredging Corp	722.65	623.55	15.89	3294397
Megasoft	204.43	176.6	15.76	652048
Prozone Realty	72.77	62.87	15.75	1573535
Soma Textile	126.37	109.18	15.74	33159
Norben Tea	66.48	57.44	15.74	5748
Prajay Engineer	32.03	27.68	15.72	164271
Nectar Life	15.76	13.62	15.71	104994

* the % price rise of the last 3 days

Nifty 50 stocks - Summary Details											
Symbol	LTP	Chng	% Chng	Volume (lacs)	Turnover (crs.)	52w High	Diff with 52w H	52w Low	Diff with 52w L	365 days % chng	30 days % chng
NIFTY 50	26053.90	117.70	0.45%	3218.72	26308.15	26104.20	0.19%	21743.65	19.82%	5.20%	7.26%
ADANIENT	2553.50	59.10	2.37%	15.27	390.40	3070.00	16.82%	2025.00	26.10%	-1.94%	-7.39%
ADANIPTS	1456.00	38.10	2.69%	35.79	519.39	1494.00	2.54%	995.65	46.24%	1.86%	7.52%
APOLLOHOSP	7854.50	-26.00	-0.33%	2.00	157.19	8099.50	3.02%	6001.00	30.89%	4.93%	13.47%
ASIANPAINT	2539.40	30.10	1.20%	6.15	155.83	3028.00	16.14%	2124.75	19.52%	7.11%	-15.17%
AXISBANK	1249.00	2.70	0.22%	45.79	569.87	1276.10	2.12%	933.50	33.80%	8.00%	4.79%
BAJAJ-AUTO	9034.50	-23.00	-0.25%	2.27	204.72	10292.75	12.22%	7089.35	27.44%	4.09%	-11.25%
BAJAJFINSV	2140.00	-0.20	-0.01%	3.43	73.24	2195.00	2.51%	1551.65	37.92%	6.84%	25.35%
BAJFINANCE	1063.80	-8.95	-0.83%	53.87	573.76	1102.50	3.51%	645.10	64.90%	8.90%	-84.48%
BEL	407.60	-5.95	-1.44%	144.98	592.77	436.00	6.51%	240.25	69.66%	4.46%	51.85%
BHARTIARTL	2100.00	9.80	0.47%	27.43	575.56	2110.40	0.49%	1511.00	38.98%	9.06%	25.46%
CIPLA	1580.00	11.90	0.76%	8.99	142.00	1673.00	5.56%	1335.00	18.35%	4.58%	5.32%
COALINDIA	382.95	-8.45	-2.16%	268.56	1045.49	459.55	16.67%	349.25	9.65%	0.58%	-15.12%
DRREDDY	1258.40	-31.00	-2.40%	25.75	326.27	1405.90	10.49%	1020.00	23.37%	2.90%	-80.21%
EICHERMOT	6978.50	-24.00	-0.34%	3.44	239.38	7122.50	2.02%	4533.65	53.93%	-0.63%	52.51%
ETERNAL	330.65	-3.95	-1.18%	196.78	650.94	368.45	10.26%	194.80	69.74%	4.24%	#VALUE!
GRASIM	2958.00	25.10	0.86%	7.12	210.51	2977.80	0.66%	2276.95	29.91%	6.78%	12.15%
HCLTECH	1556.50	34.40	2.26%	25.96	402.34	2012.20	22.65%	1302.75	19.48%	9.09%	-17.83%
HDFCBANK	1008.50	4.95	0.49%	177.69	1790.91	1020.50	1.18%	812.15	24.18%	6.19%	-42.44%
HDFCLIFE	760.45	13.45	1.80%	22.70	172.18	820.75	7.35%	584.30	30.15%	-2.28%	5.29%
HINDALCO	857.85	8.90	1.05%	56.64	484.01	859.90	0.24%	546.45	56.99%	14.13%	25.08%
HINDUNILVR	2490.00	-7.10	-0.28%	18.70	466.14	2750.00	9.45%	2136.00	16.57%	-0.59%	-1.22%
ICICIBANK	1371.60	8.50	0.62%	161.29	2201.90	1500.00	8.56%	1186.00	15.65%	0.26%	8.57%
INDIGO	5822.00	13.00	0.22%	6.60	382.74	6232.50	6.59%	3780.00	54.02%	4.46%	33.05%
INFY	1511.50	11.30	0.75%	48.85	737.85	2006.45	24.67%	1307.00	15.65%	3.54%	-19.43%
ITC	421.85	3.95	0.95%	114.71	481.15	493.45	14.51%	390.15	8.13%	3.16%	-13.35%
JIOFIN	310.25	2.30	0.75%	86.05	266.30	347.35	10.68%	198.65	56.18%	4.09%	-1.04%
JSWSTEEL	1212.60	28.40	2.40%	38.20	462.87	1223.90	0.92%	880.00	37.80%	4.72%	25.46%
KOTAKBANK	2151.00	-9.80	-0.45%	14.18	305.50	2301.90	6.56%	1679.05	28.11%	8.32%	22.16%
LT	3957.30	-15.50	-0.39%	25.64	1015.39	4016.70	1.48%	2965.30	33.45%	6.52%	19.43%
M&M	3539.50	-39.60	-1.11%	25.26	894.28	3723.80	4.95%	2425.00	45.96%	5.38%	31.54%
MARUTI	16140.00	-171.00	-1.05%	2.33	378.33	16660.00	3.12%	10725.00	50.49%	0.15%	41.80%
MAXHEALTH	1190.40	10.70	0.91%	15.16	180.24	1314.30	9.43%	936.25	27.15%	5.01%	25.77%
NESTLEIND	1275.00	4.00	0.31%	8.37	106.73	1311.60	2.79%	1055.00	20.85%	9.32%	-43.78%
NTPC	349.00	9.85	2.90%	154.23	535.31	415.45	15.99%	292.80	19.19%	0.37%	-14.98%
ONGC	257.09	6.55	2.61%	88.06	224.17	274.35	6.29%	205.00	25.41%	5.26%	-5.12%
POWERGRID	295.25	7.00	2.43%	146.09	430.04	345.40	14.52%	247.30	19.39%	2.13%	-8.72%
RELIANCE	1504.00	17.10	1.15%	118.85	1785.85	1551.00	3.03%	1114.85	34.91%	7.93%	-44.01%
SBILIFE	1973.10	36.30	1.87%	23.98	470.81	1975.00	0.10%	1372.55	43.75%	7.67%	19.80%
SBIN	939.00	8.75	0.94%	123.14	1154.92	942.05	0.32%	680.00	38.09%	8.55%	19.12%
SHRIRAMFIN	739.00	15.30	2.11%	102.46	748.21	741.90	0.39%	493.35	49.79%	19.41%	-76.60%
SUNPHARMA	1710.00	23.00	1.36%	10.17	174.11	1922.70	11.06%	1548.00	10.47%	6.32%	-9.32%
TATACONSUM	1178.90	10.00	0.86%	10.17	120.04	1191.20	1.03%	882.90	33.53%	4.46%	20.13%
TATAMOTORS	#N/A	#N/A	#N/A	#N/A	#N/A	#N/A	#N/A	#N/A	#N/A	#N/A	#N/A
TATASTEEL	185.00	3.19	1.75%	516.10	955.96	186.94	1.04%	122.62	50.87%	8.61%	24.65%
TCS	3060.00	2.10	0.07%	28.94	885.99	4494.90	31.92%	2866.60	6.75%	5.48%	-24.64%
TECHM	1455.50	8.10	0.56%	13.12	190.50	1807.70	19.48%	1209.40	20.35%	2.82%	-15.67%
TITAN	3742.00	25.00	0.67%	7.89	295.20	3800.00	1.53%	2925.00	27.93%	11.71%	13.79%
TRENT	4781.10	55.70	1.18%	3.05	145.51	7493.05	36.19%	4488.00	6.53%	0.99%	-35.81%
ULTRACEMCO	12007.00	76.00	0.64%	3.94	472.85	13097.00	8.32%	10047.85	19.50%	-1.15%	8.51%
WIPRO	242.65	0.27	0.11%	87.77	212.74	324.60	25.25%	228.00	6.43%	2.81%	-55.40%

Disclaimer / Disclosures

ANALYST CERTIFICATION

I, Mrs. Vaishali Parekh B.com, Research Analyst, author and the name subscribed to this report, hereby certify that all of the views expressed in this research report accurately reflect our views about the subject issuer(s) or securities. We also certify that no part of our compensation was, is, or will be directly or indirectly related to the specific recommendation(s) or view(s) in this report.

Terms & conditions and other disclosures:

Prabhudas Lilladher Pvt. Ltd, Mumbai, India (hereinafter referred to as "PL") is engaged in the business of Stock Broking, Portfolio Manager, Depository Participant and distribution for third party financial products. PL is a subsidiary of Prabhudas Lilladher Advisory Services Pvt Ltd. which has its various subsidiaries engaged in business of commodity broking, investment banking, financial services (margin funding) and distribution of third party financial/other products, details in respect of which are available at www.plindia.com

This document has been prepared by the Research Division of PL and is meant for use by the recipient only as information and is not for circulation. This document is not to be reported or copied or made available to others without prior permission of PL. It should not be considered or taken as an offer to sell or a solicitation to buy or sell any security.

The information contained in this report has been obtained from sources that are considered to be reliable. However, PL has not independently verified the accuracy or completeness of the same. Neither PL nor any of its affiliates, its directors or its employees accepts any responsibility of whatsoever nature for the information, statements and opinion given, made available or expressed herein or for any omission therein.

Recipients of this report should be aware that past performance is not necessarily a guide to future performance and value of investments can go down as well. The suitability or otherwise of any investments will depend upon the recipient's particular circumstances and, in case of doubt, advice should be sought from an independent expert/advisor.

Either PL or its affiliates or its directors or its employees or its representatives or its clients or their relatives may have position(s), make market, act as principal or engage in transactions of securities of companies referred to in this report and they may have used the research material prior to publication.

PL may from time to time solicit or perform investment banking or other services for any company mentioned in this document.

PL is registered as Research Analyst under Securities and Exchange Board of India (Research Analysts) Regulations, 2014 PL submits that no material disciplinary action has been taken on us by any Regulatory Authority impacting Equity Research Analysis activities.

PL or its research analysts or its associates or his relatives do not have any financial interest in the subject company.

PL or its research analysts or its associates or his relatives do not have actual/beneficial ownership of one per cent or more securities of the subject company at the end of the month immediately preceding the date of publication of the research report.

PL or its research analysts or its associates or his relatives do not have any material conflict of interest at the time of publication of the research report.

PL or its associates might have received compensation from the subject company in the past twelve months.

PL or its associates might have managed or co-managed public offering of securities for the subject company in the past twelve months or mandated by the subject company for any other assignment in the past twelve months.

PL or its associates might have received any compensation for investment banking or merchant banking or brokerage services from the subject company in the past twelve months.

PL or its associates might have received any compensation for products or services other than investment banking or merchant banking or brokerage services from the subject company in the past twelve months PL or its associates might have received any compensation or other benefits from the subject company or third party in connection with the research report.

PL encourages independence in research report preparation and strives to minimize conflict in preparation of research report. PL or its analysts did not receive any compensation or other benefits from the subject Company or third party in connection with the preparation of the research report. PL or its Research Analysts do not have any material conflict of interest at the time of publication of this report.

It is confirmed that Mrs.Vaishali Parekh B.com, Research Analyst of this report has not received any compensation from the companies mentioned in the report in the preceding twelve months compensation of our Research Analysts is not based on any specific merchant banking, investment banking or brokerage service transactions.

The Research analysts for this report certifies that all of the views expressed in this report accurately reflect his or her personal views about the subject company or companies and its or their securities, and no part of his or her compensation was, is or will be, directly or indirectly related to specific recommendations or views expressed in this report.

The research analysts for this report has not served as an officer, director or employee of the subject company PL or its research analysts have not engaged in market making activity for the subject company

Our sales people, traders, and other professionals or affiliates may provide oral or written market commentary or trading strategies to our clients that reflect opinions that are contrary to the opinions expressed herein, and our proprietary trading and investing businesses may make investment decisions that are inconsistent with the recommendations expressed herein. In reviewing these materials, you should be aware that any or all of the foregoing, among other things, may give rise to real or potential conflicts of interest.

PL and its associates, their directors and employees may (a) from time to time, have a long or short position in, and buy or sell the securities of the subject company or (b) be engaged in any other transaction involving such securities and earn brokerage or other compensation or act as a market maker in the financial instruments of the subject company or act as an advisor or lender/borrower to the subject company or may have any other potential conflict of interests with respect to any recommendation and other related information and opinions.