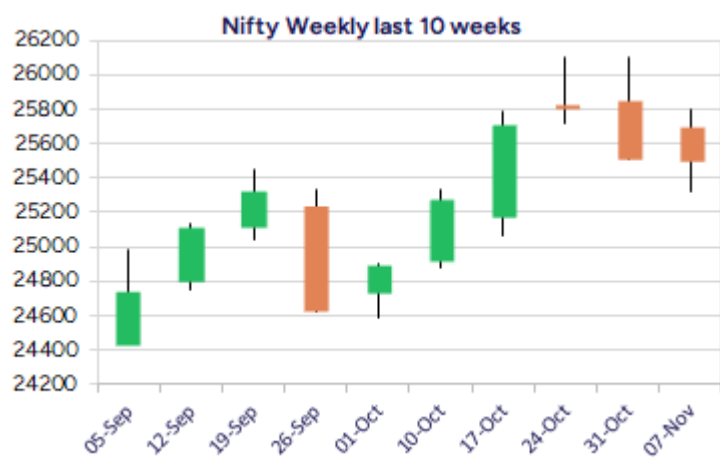
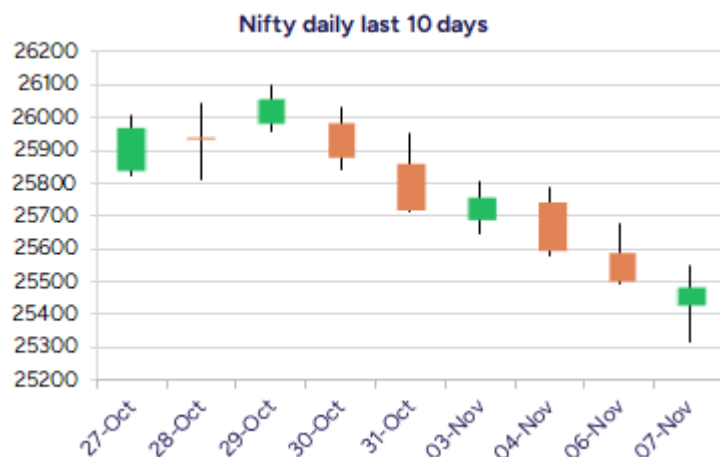


Date: 10<sup>th</sup> November 2025

\* Sensex 83216.28 - 94.73

\* Nifty 25492.30 - 17.40

\* Bank Nifty 57876.80 + 322.55



\*Blue candle → Close rate > Open rate \* Red candle → Close rate < Open rate

## Market Preview

### Nifty recovers strongly from 50EMA zone

Nifty witnessed a strong bounce back from the important 50EMA zone at 25320 level and has slightly improved the sentiment after a long streak of losing sessions expecting for further rise in the coming days. BankNifty staged a significant recovery to hit the high of 58000 zone during the intraday session with bias visibly improving and can anticipate for further upward move. The market breadth ended flat after a weak opening with the advance decline indicating a neutral ratio at close.

## Market Forecast

### Nifty daily range 25350 - 25700

Nifty after witnessing a weak morning session, recovered strongly after hitting the low near the important 50EMA at 25320 zone to overall improve the sentiment and bias expecting to carry on with the same optimistic approach in the coming sessions. The index would need to move past the 25750 zone to improve the bias and establish conviction for further rise having targets of 26100 and 26500 levels expected. With the broader markets also recovering significantly and with support maintained near the 25300 level we expect further gains for the index.

BankNifty indicated a strong bounce back from 57160 zone to close above the 57800-level improving the bias and along with the PSU Banks showing active participation, we expect further follow through of the index with 58500 level as the near-term. As said earlier, a decisive breach above the tough resistance zone of 58500 level is much needed to expect for fresh upward move in the coming days having further higher target of 60000 level, with downside support positioned near the 50EMA at 56500 level which needs to be sustained.

The support for the day is seen at 25350 levels, while the resistance is seen at 25700 levels. BankNifty would have the daily range of 57500-58500 levels.

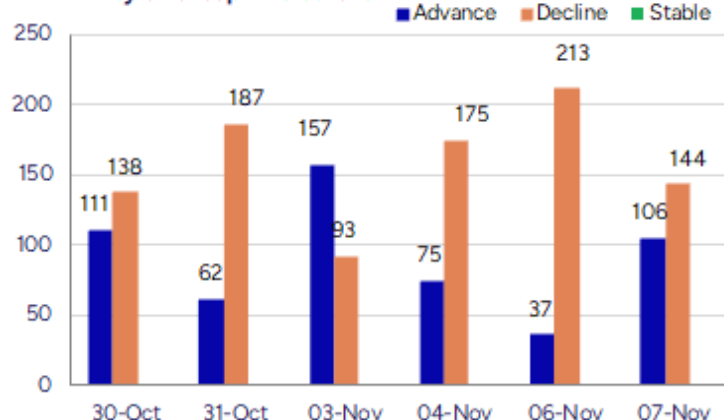
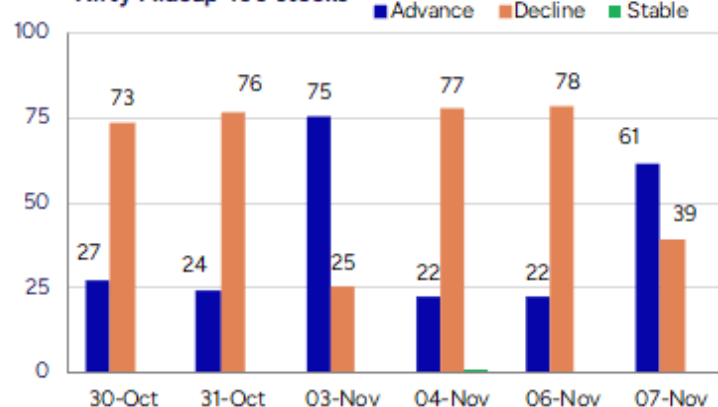
| Indices    | Period  | Closing  | % Chng | Trend | Reversal | 2 Sup | 1 Sup | Pivot | 1 Res | 2 Res |
|------------|---------|----------|--------|-------|----------|-------|-------|-------|-------|-------|
| Nifty      | Daily   | 25492.30 | -0.07% | -6    | 25772.70 | 25221 | 25357 | 25454 | 25590 | 25687 |
|            | Weekly  | 25492.30 | -0.89% | -1    | 25502.90 | 25054 | 25273 | 25538 | 25757 | 26021 |
|            | Monthly | 25722.10 | 4.51%  | 1     | 25438.50 | 23979 | 24851 | 25477 | 26349 | 26976 |
| Bank Nifty | Daily   | 57876.80 | 0.56%  | -6    | 58239.35 | 56835 | 57356 | 57679 | 58199 | 58522 |
|            | Weekly  | 57876.80 | 0.17%  | 6     | 57268.10 | 56673 | 57275 | 57760 | 58362 | 58846 |
|            | Monthly | 57776.35 | 5.75%  | 1     | 57492.70 | 52984 | 55380 | 56979 | 59375 | 60974 |
| Sensex     | Daily   | 83216.28 | -0.11% | -6    | 84031.55 | 82373 | 82795 | 83092 | 83514 | 83812 |
|            | Weekly  | 83216.28 | -0.86% | -1    | 83195.40 | 81884 | 82550 | 83337 | 84003 | 84791 |
|            | Monthly | 83938.71 | 4.57%  | 1     | 83147.90 | 77999 | 80969 | 83130 | 86099 | 88260 |

**Gainers - Losers ( Nifty 500 Stocks )**
**Gainers**

| Company Name    | Last Price | % Gain | Volume   |
|-----------------|------------|--------|----------|
| Hb Stockhol     | 98.82      | 18.8   | 887452   |
| M & B Eng       | 505        | 15.45  | 7784946  |
| Interarch Build | 2520.7     | 14.87  | 2539167  |
| Dhariwalcorp    | 291.25     | 14.46  | 292800   |
| Rossell Techsys | 677.2      | 10.63  | 630787   |
| Pricol          | 572.55     | 10.57  | 12558966 |
| Tembo Global    | 695.8      | 10     | 281066   |

**Losers**

| Company Name    | Last Price | % Loss | Volume  |
|-----------------|------------|--------|---------|
| Bliss GVS       | 128.4      | -15.52 | 4591271 |
| Saatvik Green   | 485        | -9.81  | 1298379 |
| RS Software     | 57.21      | -9.75  | 340164  |
| Venkys          | 1391.6     | -8.58  | 307882  |
| Silly Monks Ent | 23.99      | -8.5   | 189825  |
| Amiable         | 63.55      | -7.76  | 1600    |
| Amber Enterpris | 7227       | -7.73  | 3136182 |

**Nifty Smallcap-250 stocks**

**Nifty Midcap-100 stocks**


## Nifty Daily chart with RSI indicator



## BankNifty Daily chart with RSI indicator

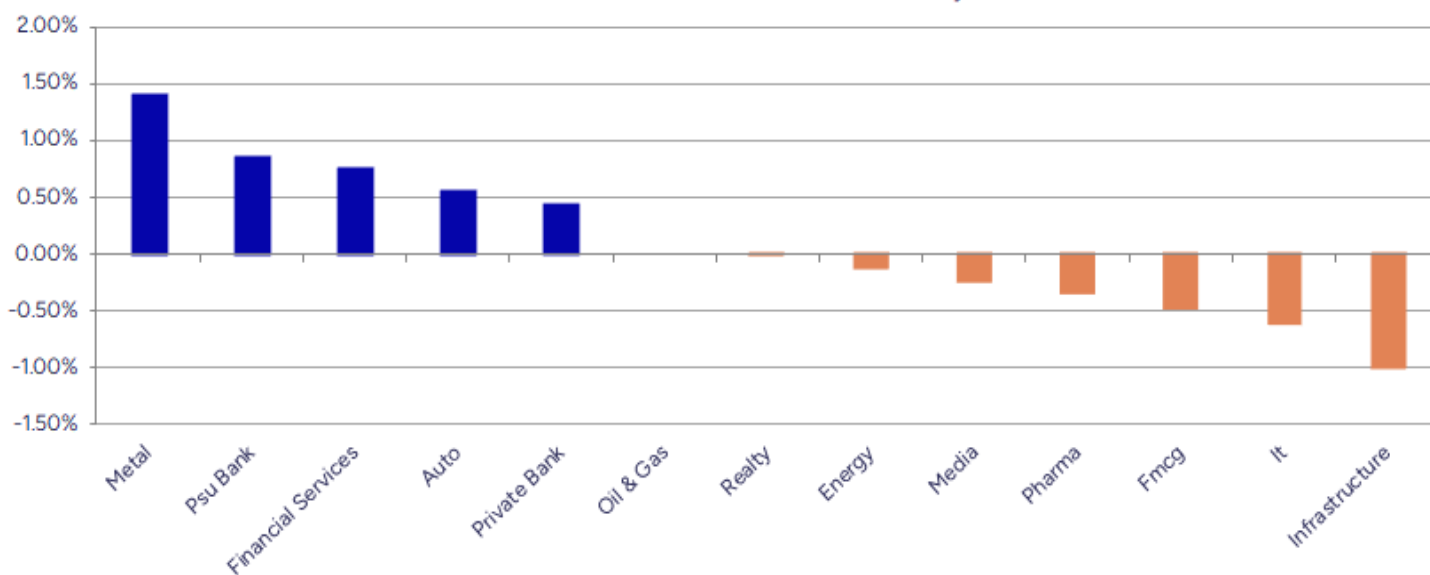


| Breakouts - Cross above 200 DMA |        |          |         | Breakdown - Cross below 200 DMA |        |          |         |
|---------------------------------|--------|----------|---------|---------------------------------|--------|----------|---------|
| Company Name                    | LCP    | Change % | 200 DMA | Company Name                    | LCP    | Change % | 200 DMA |
| Hb Stockhol                     | 98.82  | 15.39    | 85.64   | Bliss GVS                       | 128.5  | -10.74   | 143.96  |
| Urban Enviro Wa                 | 192    | 6.44     | 180.39  | Bulkcorp Intern                 | 78.1   | -4.24    | 81.56   |
| Inspirisys Solu                 | 98.75  | 4.83     | 94.2    | Enviro Infra                    | 228.9  | -3.75    | 237.83  |
| Prudent Advisor                 | 2636.7 | 4.28     | 2528.55 | Medi Assist Hea                 | 493.8  | -3.12    | 509.7   |
| Swan Corp                       | 473    | 3.63     | 456.42  | Mangalam Organ                  | 477.2  | -2.83    | 491.1   |
| Angel One                       | 2574.9 | 3.29     | 2492.99 | Thirumalai Chem                 | 265    | -2.82    | 272.7   |
| Fineotex Chem                   | 26.49  | 3.11     | 25.69   | WS Industries                   | 78.5   | -2.59    | 80.59   |
| Pearl Global In                 | 1364.1 | 2.33     | 1333.03 | Suzlon Energy                   | 57.25  | -2.49    | 58.71   |
| RBM Infracon                    | 435.9  | 2.19     | 426.57  | Agni Green                      | 26.3   | -2.45    | 26.96   |
| Vardhman Hold                   | 3858.7 | 2.13     | 3778.34 | KN Agri                         | 225    | -2.39    | 230.52  |
| A2Z Infra Eng                   | 18.3   | 2.01     | 17.94   | Precot                          | 477.35 | -2.36    | 488.88  |
| SecMark Consult                 | 124.9  | 1.97     | 122.49  | Cords Cable Ind                 | 178.07 | -1.91    | 181.53  |
| STEL Holdings                   | 421.65 | 1.96     | 413.55  | Hercules Hoists                 | 172.27 | -1.86    | 175.53  |
| Shankar Lal Ram                 | 70.53  | 1.92     | 69.2    | V-Guard Ind                     | 361.4  | -1.70    | 367.65  |
| Premier Energie                 | 1029.8 | 1.64     | 1013.16 | JK Lakshmi Cem                  | 832.2  | -1.68    | 846.41  |
| ICICI Prudentia                 | 615.35 | 1.42     | 606.76  | Apex Ecotech                    | 118    | -1.47    | 119.76  |
| Prism Johnson                   | 144.5  | 1.10     | 142.93  | AIA Engineering                 | 3239.2 | -1.39    | 3284.76 |
| Jana SFB                        | 470.55 | 1.00     | 465.87  | AFFLE 3I                        | 1747.2 | -1.15    | 1767.55 |

\* Stocks crossing above its Simple Moving Average (200DMA)

\* Stocks crossing below its Simple Moving Average (200DMA)

Sectoral Indices - Gainers Losers for the day



Stocks witnessing a volume surge as compared to their 5 day average volume

Watch out for the stocks that have seen a huge spurt in its share price over the last three days

| Volume Shockers - NSE |        |        |          |           |       |
|-----------------------|--------|--------|----------|-----------|-------|
| Company name          | LCP    | % Chg  | Volume   | Avg Vol * | % Chg |
| UTKARSHBNK            | 17.04  | -0.93  | 97558827 | 1045115   | 9235  |
| R M Drip & Spri       | 81.72  | 3.1    | 735434   | 9800      | 7404  |
| Jeena Sikho           | 794    | 1.12   | 1215586  | 18612     | 6431  |
| Pricol                | 571.1  | 10.29  | 12601235 | 194781    | 6369  |
| Krishival Foods       | 494.65 | -0.01  | 52320    | 1200      | 4260  |
| Aarti Ind             | 391.8  | 0.33   | 19374221 | 560188    | 3359  |
| Netweb                | 3492   | 5.79   | 4576777  | 163390    | 2701  |
| Atal                  | 24.7   | -0.12  | 2742556  | 100889    | 2618  |
| Interarch Build       | 2520.7 | 14.87  | 2539167  | 100700    | 2422  |
| Bliss GVS             | 128.5  | -15.45 | 4595728  | 223872    | 1953  |
| Sasken Tech           | 1490.2 | 8.17   | 229008   | 11736     | 1851  |
| Swan Corp             | 475.7  | 9.19   | 13675773 | 765040    | 1688  |
| Minda Corp            | 579.2  | 1.02   | 7869942  | 510472    | 1442  |
| Cool Caps             | 77.4   | 2.11   | 128750   | 8400      | 1433  |
| BEW Engineering       | 134.3  | 9.99   | 16500    | 1125      | 1367  |
| Amber Enterpris       | 7227   | -7.73  | 3136182  | 237539    | 1220  |
| Linde India           | 5878.5 | 0.61   | 161870   | 12378     | 1208  |
| Triveni Engg          | 360.5  | 0.91   | 2198707  | 176582    | 1145  |
| Arvind                | 328.3  | 5.92   | 3334349  | 269667    | 1136  |
| Krishna Institu       | 728.1  | 1.08   | 708146   | 59456     | 1091  |

\* the Average Volume of last 5 days

| Price Shockers - NSE |        |           |       |          |
|----------------------|--------|-----------|-------|----------|
| Company name         | LCP    | Prv Close | % Chg | Volume   |
| Urban Enviro         | 192    | 159.05    | 20.72 | 182400   |
| Hb Stockhol          | 98.82  | 84.61     | 16.79 | 887452   |
| Redington            | 292    | 250.25    | 16.68 | 35765638 |
| Interarch Build      | 2520.7 | 2182.7    | 15.49 | 2539167  |
| CCL Products         | 1020.7 | 888.65    | 14.86 | 4728672  |
| Maral Overseas       | 52.17  | 45.95     | 13.54 | 191986   |
| Privi Special        | 3388   | 2984.1    | 13.54 | 352340   |
| UFO Moviez           | 84.9   | 75.79     | 12.02 | 1120305  |
| Shri Ahimsa          | 266.8  | 242       | 10.25 | 71400    |
| Cura Tech            | 194.54 | 176.46    | 10.25 | 137      |
| IRIS Business S      | 369.65 | 335.3     | 10.24 | 57435    |
| Jubilant Agri        | 2645.2 | 2399.4    | 10.24 | 10028    |
| Bafna Pharma         | 174.56 | 158.34    | 10.24 | 11166    |
| Swan Defence         | 895.05 | 811.9     | 10.24 | 1842     |
| Kavveri Defence      | 97.32  | 88.28     | 10.24 | 126816   |
| Gujarat Pipavav      | 179.32 | 162.78    | 10.16 | 14017513 |
| Moxsh Overseas       | 74.4   | 67.55     | 10.14 | 3200     |

\* the % price rise of the last 3 days



| Nifty 50 stocks - Summary Details |          |         |        |               |                 |          |                 |          |                 |                 |                |
|-----------------------------------|----------|---------|--------|---------------|-----------------|----------|-----------------|----------|-----------------|-----------------|----------------|
| Symbol                            | LTP      | Chng    | % Chng | Volume (lacs) | Turnover (crs.) | 52w High | Diff with 52w H | 52w Low  | Diff with 52w L | 365 days % chng | 30 days % chng |
| NIFTY 50                          | 25492.30 | -17.40  | -0.07% | 3055.94       | 35485.36        | 26104.20 | 2.34%           | 21743.65 | 17.24%          | 1.72%           | 5.35%          |
| ADANIENT                          | 2374.80  | 60.50   | 2.61%  | 22.33         | 527.58          | 3070.00  | 22.64%          | 2025.00  | 17.27%          | -10.07%         | -20.62%        |
| ADANIPTS                          | 1448.90  | 12.10   | 0.84%  | 21.85         | 316.28          | 1494.00  | 3.02%           | 995.65   | 45.52%          | 2.59%           | 8.08%          |
| APOLLOHOSP                        | 7642.00  | -140.00 | -1.80% | 4.86          | 374.06          | 8099.50  | 5.65%           | 6001.00  | 27.35%          | 1.57%           | 11.71%         |
| ASIANPAINT                        | 2612.00  | 9.10    | 0.35%  | 7.92          | 205.97          | 2907.85  | 10.17%          | 2124.75  | 22.93%          | 10.54%          | -9.85%         |
| AXISBANK                          | 1224.10  | -4.40   | -0.36% | 34.61         | 423.82          | 1276.10  | 4.07%           | 933.50   | 31.13%          | 1.29%           | 4.85%          |
| BAJAJ-AUTO                        | 8717.00  | -3.50   | -0.04% | 2.90          | 251.39          | 10079.80 | 13.52%          | 7089.35  | 22.96%          | -0.81%          | -11.69%        |
| BAJAJFINSV                        | 2110.00  | 46.80   | 2.27%  | 8.39          | 174.71          | 2195.00  | 3.87%           | 1551.65  | 35.98%          | 1.48%           | 18.87%         |
| BAJFINANCE                        | 1069.60  | 27.70   | 2.66%  | 69.41         | 735.79          | 1102.50  | 2.98%           | 645.10   | 65.80%          | 3.27%           | -84.97%        |
| BEL                               | 414.40   | 5.60    | 1.37%  | 101.40        | 416.98          | 436.00   | 4.95%           | 240.25   | 72.49%          | -1.08%          | 42.76%         |
| BHARTIARTL                        | 2001.50  | -93.40  | -4.46% | 703.92        | 14259.35        | 2135.60  | 6.28%           | 1511.00  | 32.46%          | 10.08%          | 32.72%         |
| CIPLA                             | 1509.80  | 8.30    | 0.55%  | 10.38         | 155.91          | 1673.00  | 9.75%           | 1335.00  | 13.09%          | -0.77%          | -6.23%         |
| COALINDIA                         | 376.00   | 2.85    | 0.76%  | 46.50         | 174.29          | 440.35   | 14.61%          | 349.25   | 7.66%           | -2.29%          | -14.20%        |
| DRREDDY                           | 1207.00  | 1.80    | 0.15%  | 10.76         | 129.78          | 1405.90  | 14.15%          | 1020.00  | 18.33%          | -3.48%          | -5.27%         |
| EICHERMOT                         | 6885.00  | 78.50   | 1.15%  | 4.65          | 315.67          | 7122.50  | 3.33%           | 4536.05  | 51.78%          | -1.07%          | 38.91%         |
| ETERNAL                           | 305.90   | 0.25    | 0.08%  | 269.11        | 823.45          | 368.45   | 16.98%          | 194.80   | 57.03%          | -8.79%          | #VALUE!        |
| GRASIM                            | 2724.00  | 23.90   | 0.89%  | 11.02         | 299.61          | 2977.80  | 8.52%           | 2276.95  | 19.63%          | -3.82%          | 1.85%          |
| HCLTECH                           | 1511.00  | -15.40  | -1.01% | 22.39         | 337.68          | 2012.20  | 24.91%          | 1302.75  | 15.99%          | 7.67%           | -13.94%        |
| HDFCBANK                          | 984.30   | -0.35   | -0.04% | 150.04        | 1470.34         | 1020.50  | 3.55%           | 812.15   | 21.20%          | 1.15%           | -43.99%        |
| HDFCLIFE                          | 750.00   | 13.95   | 1.90%  | 17.09         | 126.95          | 820.75   | 8.62%           | 584.30   | 28.36%          | -3.54%          | 2.62%          |
| HINDALCO                          | 790.50   | 2.10    | 0.27%  | 131.89        | 1044.85         | 864.00   | 8.51%           | 546.45   | 44.66%          | 1.51%           | 13.02%         |
| HINDUNILVR                        | 2416.80  | -0.20   | -0.01% | 8.18          | 197.56          | 2750.00  | 12.12%          | 2136.00  | 13.15%          | -4.16%          | -3.39%         |
| ICICIBANK                         | 1342.60  | 22.20   | 1.68%  | 77.19         | 1032.59         | 1500.00  | 10.49%          | 1186.00  | 13.20%          | -3.15%          | 1.83%          |
| INDIGO                            | 5604.50  | -88.50  | -1.55% | 7.95          | 446.21          | 6232.50  | 10.08%          | 3830.00  | 46.33%          | -0.03%          | 44.46%         |
| INFY                              | 1478.00  | 11.30   | 0.77%  | 87.66         | 1285.47         | 2006.45  | 26.34%          | 1307.00  | 13.08%          | -0.63%          | -16.39%        |
| ITC                               | 404.40   | -3.10   | -0.76% | 84.12         | 340.78          | 491.00   | 17.64%          | 390.15   | 3.65%           | 1.68%           | -15.14%        |
| JIOFIN                            | 299.65   | 1.55    | 0.52%  | 93.64         | 278.51          | 347.35   | 13.73%          | 198.65   | 50.84%          | -2.66%          | -7.39%         |
| JSWSTEEL                          | 1174.00  | 5.20    | 0.44%  | 8.45          | 98.63           | 1223.90  | 4.08%           | 880.00   | 33.41%          | 0.77%           | 16.94%         |
| KOTAKBANK                         | 2089.90  | 6.70    | 0.32%  | 14.00         | 292.42          | 2301.90  | 9.21%           | 1679.05  | 24.47%          | -2.93%          | 18.56%         |
| LT                                | 3882.10  | 0.50    | 0.01%  | 15.77         | 609.57          | 4062.60  | 4.44%           | 2965.30  | 30.92%          | 3.87%           | 8.58%          |
| M&M                               | 3685.00  | 66.50   | 1.84%  | 25.96         | 949.43          | 3723.80  | 1.04%           | 2425.00  | 51.96%          | 4.22%           | 24.80%         |
| MARUTI                            | 15490.00 | 38.00   | 0.25%  | 2.27          | 349.76          | 16660.00 | 7.02%           | 10725.00 | 44.43%          | -3.41%          | 38.33%         |
| MAXHEALTH                         | 1136.10  | 10.70   | 0.95%  | 17.97         | 202.75          | 1314.30  | 13.56%          | 936.25   | 21.35%          | -1.25%          | 7.74%          |
| NESTLEIND                         | 1262.80  | -3.30   | -0.26% | 5.97          | 75.32           | 1311.60  | 3.72%           | 1055.00  | 19.70%          | 7.14%           | -44.04%        |
| NTPC                              | 326.00   | 2.10    | 0.65%  | 85.78         | 278.62          | 410.90   | 20.66%          | 292.80   | 11.34%          | -3.67%          | -18.97%        |
| ONGC                              | 252.50   | 1.00    | 0.40%  | 44.49         | 112.15          | 273.50   | 7.68%           | 205.00   | 23.17%          | 2.29%           | -5.95%         |
| POWERGRID                         | 271.75   | 1.55    | 0.57%  | 113.79        | 308.84          | 345.40   | 21.32%          | 247.30   | 9.89%           | -5.82%          | -14.66%        |
| RELIANCE                          | 1480.00  | -16.10  | -1.08% | 78.22         | 1162.86         | 1551.00  | 4.58%           | 1114.85  | 32.75%          | 8.81%           | 14.62%         |
| SBILIFE                           | 2003.90  | 33.10   | 1.68%  | 12.41         | 247.10          | 2004.00  | 0.00%           | 1372.55  | 46.00%          | 11.29%          | 20.67%         |
| SBIN                              | 954.80   | -5.95   | -0.62% | 133.69        | 1277.52         | 971.40   | 1.71%           | 680.00   | 40.41%          | 9.92%           | 13.14%         |
| SHRIRAMFIN                        | 817.70   | 30.00   | 3.81%  | 97.65         | 788.30          | 820.00   | 0.28%           | 493.35   | 65.74%          | 18.03%          | -74.94%        |
| SUNPHARMA                         | 1692.70  | 6.80    | 0.40%  | 15.13         | 256.11          | 1910.00  | 11.38%          | 1548.00  | 9.35%           | 1.89%           | -6.53%         |
| TATACONSUM                        | 1167.00  | -23.40  | -1.97% | 13.52         | 158.66          | 1202.80  | 2.98%           | 882.90   | 32.18%          | 4.23%           | 18.95%         |
| TMPV                              | 405.75   | -2.10   | -0.51% | 69.30         | 280.50          | 843.90   | 51.92%          | 376.30   | 7.83%           | #VALUE!         | #VALUE!        |
| TATASTEEL                         | 181.50   | 4.23    | 2.39%  | 191.65        | 343.42          | 186.94   | 2.91%           | 122.62   | 48.02%          | 4.24%           | 16.40%         |
| TCS                               | 2993.50  | -17.40  | -0.58% | 18.30         | 545.42          | 4494.90  | 33.40%          | 2866.60  | 4.43%           | 0.75%           | -24.18%        |
| TECHM                             | 1387.20  | -26.40  | -1.87% | 12.09         | 168.46          | 1807.70  | 23.26%          | 1209.40  | 14.70%          | -1.79%          | -13.42%        |
| TITAN                             | 3768.00  | -6.40   | -0.17% | 7.29          | 274.79          | 3837.70  | 1.82%           | 2925.00  | 28.82%          | 10.19%          | 16.85%         |
| TRENT                             | 4618.50  | -60.70  | -1.30% | 5.42          | 252.47          | 7493.05  | 38.36%          | 4488.00  | 2.91%           | -2.05%          | -32.85%        |
| ULTRACEMCO                        | 11850.00 | -60.00  | -0.50% | 1.48          | 176.00          | 13097.00 | 9.52%           | 10047.85 | 17.94%          | -1.20%          | 6.56%          |
| WIPRO                             | 236.75   | -3.30   | -1.37% | 55.19         | 130.67          | 324.60   | 27.06%          | 228.00   | 3.84%           | -0.86%          | -55.85%        |

## Disclaimer / Disclosures

### ANALYST CERTIFICATION

I, Mrs. Vaishali Parekh B.com, Research Analyst, author and the name subscribed to this report, hereby certify that all of the views expressed in this research report accurately reflect our views about the subject issuer(s) or securities. We also certify that no part of our compensation was, is, or will be directly or indirectly related to the specific recommendation(s) or view(s) in this report.

Terms & conditions and other disclosures:

Prabhudas Lilladher Pvt. Ltd, Mumbai, India (hereinafter referred to as "PL") is engaged in the business of Stock Broking, Portfolio Manager, Depository Participant and distribution for third party financial products. PL is a subsidiary of Prabhudas Lilladher Advisory Services Pvt Ltd. which has its various subsidiaries engaged in business of commodity broking, investment banking, financial services (margin funding) and distribution of third party financial/other products, details in respect of which are available at [www.plindia.com](http://www.plindia.com)

This document has been prepared by the Research Division of PL and is meant for use by the recipient only as information and is not for circulation. This document is not to be reported or copied or made available to others without prior permission of PL. It should not be considered or taken as an offer to sell or a solicitation to buy or sell any security.

The information contained in this report has been obtained from sources that are considered to be reliable. However, PL has not independently verified the accuracy or completeness of the same. Neither PL nor any of its affiliates, its directors or its employees accepts any responsibility of whatsoever nature for the information, statements and opinion given, made available or expressed herein or for any omission therein.

Recipients of this report should be aware that past performance is not necessarily a guide to future performance and value of investments can go down as well. The suitability or otherwise of any investments will depend upon the recipient's particular circumstances and, in case of doubt, advice should be sought from an independent expert/advisor.

Either PL or its affiliates or its directors or its employees or its representatives or its clients or their relatives may have position(s), make market, act as principal or engage in transactions of securities of companies referred to in this report and they may have used the research material prior to publication.

PL may from time to time solicit or perform investment banking or other services for any company mentioned in this document.

PL is registered as Research Analyst under Securities and Exchange Board of India (Research Analysts) Regulations, 2014 PL submits that no material disciplinary action has been taken on us by any Regulatory Authority impacting Equity Research Analysis activities.

PL or its research analysts or its associates or his relatives do not have any financial interest in the subject company.

PL or its research analysts or its associates or his relatives do not have actual/beneficial ownership of one per cent or more securities of the subject company at the end of the month immediately preceding the date of publication of the research report.

PL or its research analysts or its associates or his relatives do not have any material conflict of interest at the time of publication of the research report.

PL or its associates might have received compensation from the subject company in the past twelve months.

PL or its associates might have managed or co-managed public offering of securities for the subject company in the past twelve months or mandated by the subject company for any other assignment in the past twelve months.

PL or its associates might have received any compensation for investment banking or merchant banking or brokerage services from the subject company in the past twelve months.

PL or its associates might have received any compensation for products or services other than investment banking or merchant banking or brokerage services from the subject company in the past twelve months PL or its associates might have received any compensation or other benefits from the subject company or third party in connection with the research report.

PL encourages independence in research report preparation and strives to minimize conflict in preparation of research report. PL or its analysts did not receive any compensation or other benefits from the subject Company or third party in connection with the preparation of the research report. PL or its Research Analysts do not have any material conflict of interest at the time of publication of this report.

It is confirmed that Mrs.Vaishali Parekh B.com, Research Analyst of this report has not received any compensation from the companies mentioned in the report in the preceding twelve months compensation of our Research Analysts is not based on any specific merchant banking, investment banking or brokerage service transactions.

The Research analysts for this report certifies that all of the views expressed in this report accurately reflect his or her personal views about the subject company or companies and its or their securities, and no part of his or her compensation was, is or will be, directly or indirectly related to specific recommendations or views expressed in this report.

The research analysts for this report has not served as an officer, director or employee of the subject company PL or its research analysts have not engaged in market making activity for the subject company

Our sales people, traders, and other professionals or affiliates may provide oral or written market commentary or trading strategies to our clients that reflect opinions that are contrary to the opinions expressed herein, and our proprietary trading and investing businesses may make investment decisions that are inconsistent with the recommendations expressed herein. In reviewing these materials, you should be aware that any or all of the foregoing, among other things, may give rise to real or potential conflicts of interest.

PL and its associates, their directors and employees may (a) from time to time, have a long or short position in, and buy or sell the securities of the subject company or (b) be engaged in any other transaction involving such securities and earn brokerage or other compensation or act as a market maker in the financial instruments of the subject company or act as an advisor or lender/borrower to the subject company or may have any other potential conflict of interests with respect to any recommendation and other related information and opinions.