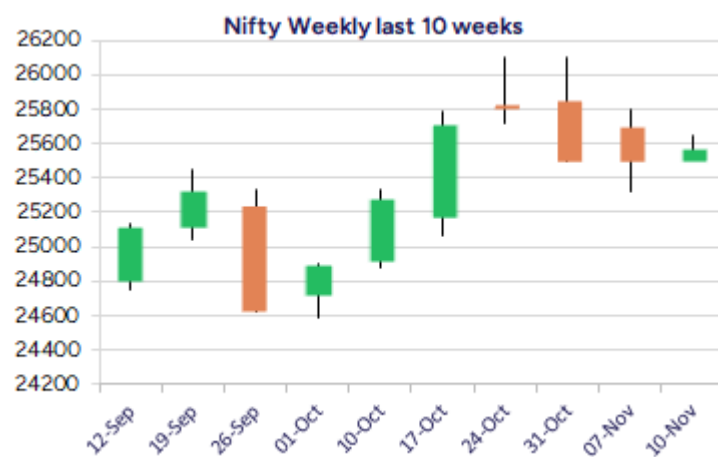
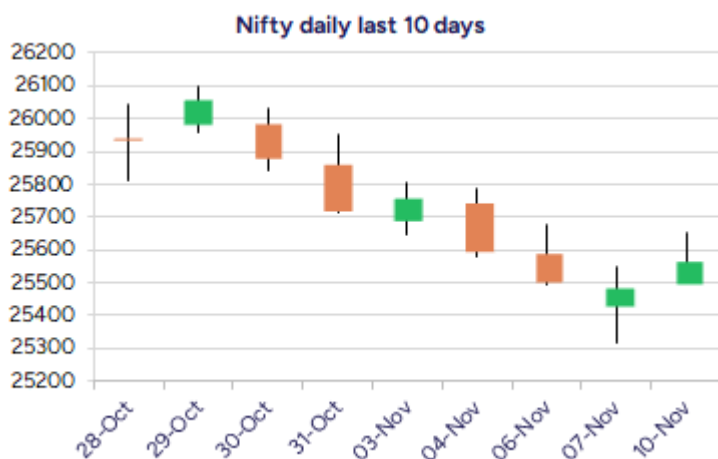


Date: 11th November 2025

* Sensex 83535.35 + 319.07

* Nifty 25574.35 + 82.05

* Bank Nifty 57937.55 + 60.75



*Blue candle → Close rate > Open rate * Red candle → Close rate < Open rate

Market Preview

Nifty extends gains with bias improving

Nifty extended the gains to reach the 25650 level with the bias visibly improving and can expect for further rise in the coming days. BankNifty was overall sluggish but managed to close in the green with a marginal gain and would need a decisive move past 58500 zone to trigger for fresh upward move. The market breadth was overall flat with the advance decline indicating a neutral ratio at close.

Market Forecast

Nifty daily range 25450 - 25800

Nifty after taking support near the important 50EMA at 25320 zone, the index continued with the positive move to extend the gains and touched the 25650 zone during the intraday session to improve the bias expecting for further upward move in the coming days. As mentioned earlier, the index would need to move past the 25750 zone to establish conviction for further rise having targets of 26100 and 26500 levels expected having the near-term support at 25300 zone which needs to be sustained.

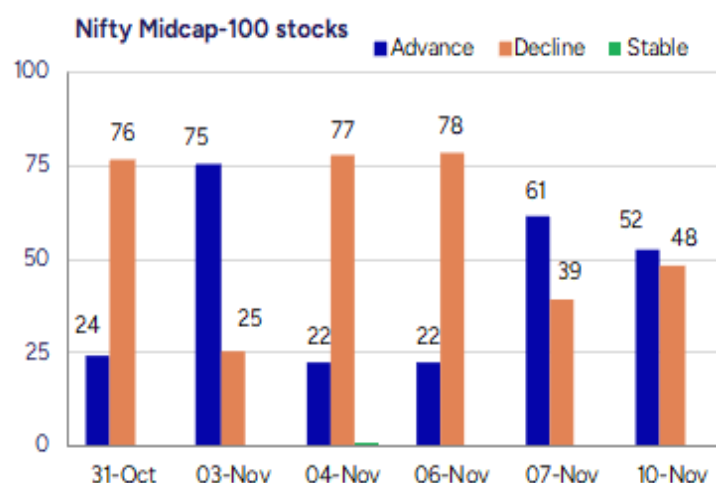
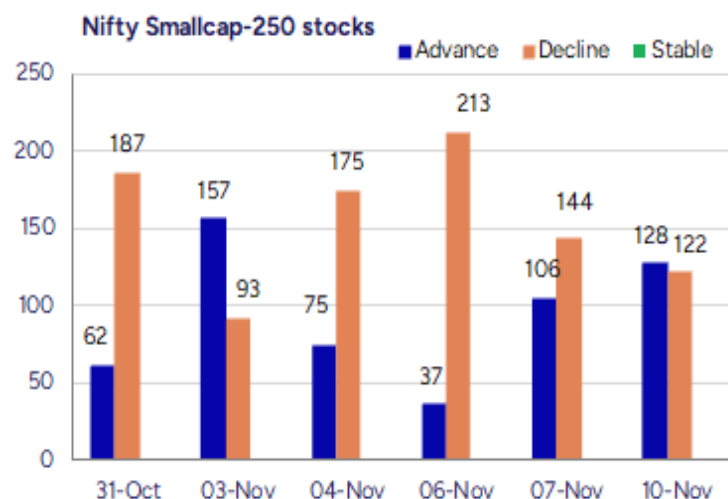
BankNifty witnessed a marginal gain to find resistance near the 58000 zone after picking up significantly in the previous session from 57200 zone to improve the bias expecting for further rise provided, the index gives a decisive breach above the tough resistance zone of 58500 level which shall open the gates for fresh upward move having further higher target of 60000 level, with downside support positioned near the 50EMA at 56500 level which needs to be sustained.

The support for the day is seen at 25450 levels, while the resistance is seen at 25800 levels. BankNifty would have the daily range of 57600-58700 levels.

Indices	Period	Closing	% Chng	Trend	Reversal	2 Sup	1 Sup	Pivot	1 Res	2 Res
Nifty	Daily	25574.35	0.32%	-7	25660.80	25427	25501	25577	25651	25727
	Weekly	25492.30	-0.89%	-1	25502.90	25054	25273	25538	25757	26021
	Monthly	25722.10	4.51%	1	25438.50	23979	24851	25477	26349	26976
Bank Nifty	Daily	57937.55	0.10%	-7	58036.75	57709	57823	57960	58074	58211
	Weekly	57876.80	0.17%	6	57268.10	56673	57275	57760	58362	58846
	Monthly	57776.35	5.75%	1	57492.70	52984	55380	56979	59375	60974
Sensex	Daily	83535.35	0.38%	-7	83718.05	82939	83237	83496	83794	84053
	Weekly	83216.28	-0.86%	-1	83195.40	81884	82550	83337	84003	84791
	Monthly	83938.71	4.57%	1	83147.90	77999	80969	83130	86099	88260

Gainers - Losers (Nifty 500 Stocks)

Gainers				Losers			
Company Name	Last Price	% Gain	Volume	Company Name	Last Price	% Loss	Volume
HBL Eng	1098.8	12.21	27033472	Transformers	313.55	-19.99	3229314
NALCO	257.36	9.64	72663239	JM Financial	146.9	-7.52	10214451
UNO Minda	1319.3	7.29	2923214	Trent	4283.7	-7.43	6807962
Torrent Pharma	3817.5	6.63	1651416	Graphite India	538.55	-6.7	4344954
Balrampur Chini	461.2	6.62	1835717	Schneider Infra	808	-6.26	432810
JB Chemicals	1813.3	6.48	1349182	HEG	519.3	-5.5	1530693
FSN E-Co Nykaa	260.82	6.08	35673331	Global Health	1183.9	-5.42	1390810



Nifty Daily chart with RSI indicator



BankNifty Daily chart with RSI indicator



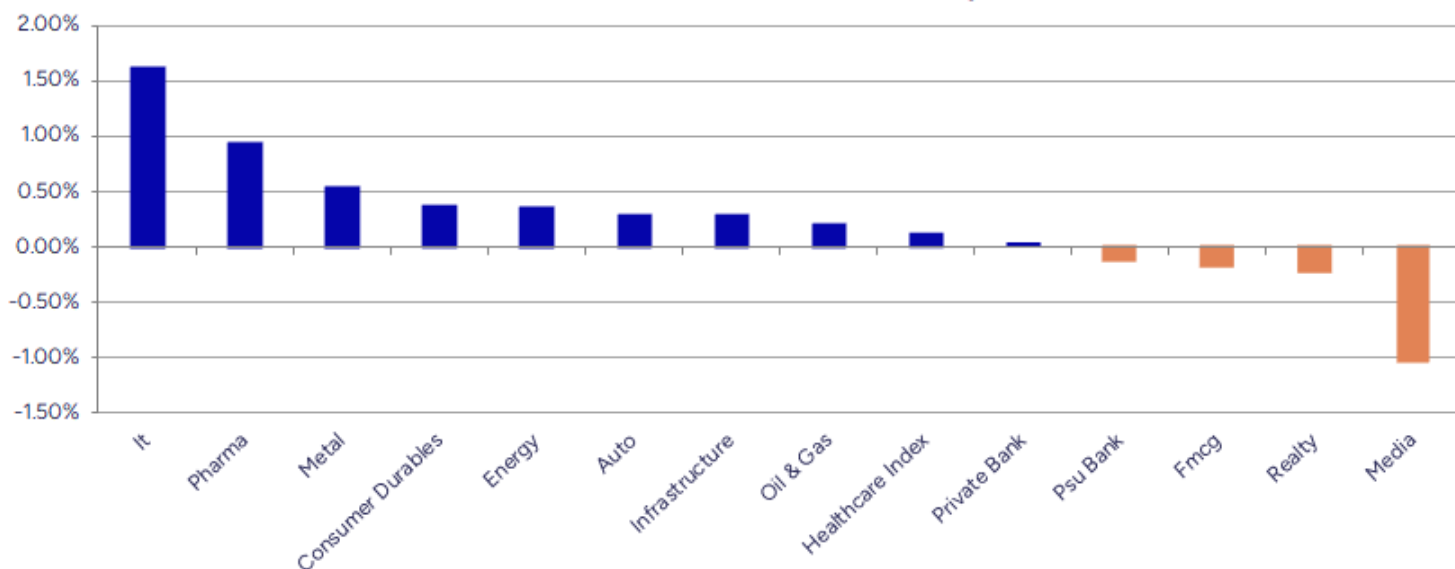
Breakouts - Cross above 200 DMA			
Company Name	LCP	Change %	200 DMA
Apex Ecotech	130	8.68	119.62
Wealth First Po	1190.1	8.27	1099.18
Indigo Paints	1155.35	5.69	1093.18
AIA Engineering	3445.7	4.94	3283.56
Varvee Global	156.31	4.12	150.12
Tribhovandas	195.67	3.74	188.62
One Point One S	53.21	3.36	51.48
Magson Retail	116.55	3.18	112.96
Krishna Defence	795.95	2.92	773.36
Bliss GVS	147.85	2.82	143.79
Proventus Agro	1286.65	2.49	1255.37
Aurobindo Pharm	1154.8	2.06	1131.51
Hind Composites	472.4	2.05	462.89
Welspun India	132.27	2.03	129.64
Murudeshwar Cer	41.24	1.68	40.56
Cords Cable Ind	184.32	1.53	181.54
Voltamp Trans	7953	1.44	7840.28
Bombay Burmah	1935.9	1.43	1908.55

* Stocks crossing above its Simple Moving Average (200DMA)

Breakdown - Cross below 200 DMA			
Company Name	LCP	Change %	200 DMA
Kamat Hotels	227.9	-15.24	268.87
Assoc Alcohol	992.4	-12.24	1130.82
AARTIPHARM	766.05	-5.71	812.47
Global Health	1183.9	-5.23	1249.2
Krystal Integra	557.75	-4.90	586.49
ORIENTAL AROMAT	334.05	-3.61	346.55
Emmbi Ind	104.02	-3.59	107.89
Esconet Technol	203.45	-3.57	210.99
Electrotherm	938.45	-3.54	972.94
OCCL	104.37	-3.45	108.1
Urban Enviro Wa	174.15	-3.14	179.79
Eveready Ind	344.9	-2.57	354
V-Mart Retail	777.75	-2.57	798.23
Sanstar	91.58	-2.53	93.96
Madhya Pradesh	36.2	-2.48	37.12
KFin Tech	1081.6	-2.40	1108.23
Rajdarshan Ind	45.39	-2.20	46.41
Mangalam Cement	751.5	-1.93	766.27

* Stocks crossing below its Simple Moving Average (200DMA)

Sectoral Indices - Gainers Losers for the day



Stocks witnessing a volume surge as compared to their 5 day average volume

Watch out for the stocks that have seen a huge spurt in its share price over the last three days

Volume Shockers - NSE					
Company name	LCP	% Chg	Volume	Avg Vol *	% Chg
SMS Pharma	292.9	1.26	8625048	111599	7629
Indigo Paints	1155.35	15.06	4581620	88722	5064
R M Drip & Spri	81.92	0.24	483978	9800	4839
Ram Ratna Wires	622.4	1.56	554459	12185	4450
Krishival Foods	497.1	0.5	49980	1200	4065
S D Retail	107.1	7.1	778000	23200	3253
Jeena Sikho	728.95	-8.19	616755	18612	3214
Krsnaa	779.45	7.61	2512397	81892	2968
Cool Caps	82.1	6.07	252500	8400	2906
Raghav Producti	997.8	8.86	641460	23115	2675
HBL Eng	1098.8	12.21	27033472	1034907	2512
BEW Engineering	137.8	2.61	28500	1125	2433
Kamat Hotels	227.9	-18.3	1053566	44969	2243
Dreamfolks Ser.	134.68	10.29	2509709	113656	2108
Moving Media	56.05	-15.71	140000	7200	1844
United Polyfab	45.7	4.77	1556618	97966	1489
Sigma Solve	52.61	-4.97	139606	9030	1446
Voltamp Trans	7953	11.11	458276	30334	1411
Trent	4283.7	-7.43	6807962	457299	1389
Netweb	3373.5	-1.7	2429314	163390	1387

* the Average Volume of last 5 days

Price Shockers - NSE				
Company name	LCP	Prv Close	% Chg	Volume
Indian Emulsifi	120.95	99.4	21.68	445500
Jay Jalaram	183.45	152.45	20.33	39500
CCL Products	1068.45	888.65	20.23	2314009
Snehaa Organics	94.45	79.15	19.33	150000
Interarch Build	2596.8	2182.7	18.97	917428
Hb Stockhol	100.42	84.61	18.69	389987
Gallantt Ispat	656.3	559.3	17.34	6320316
Inspirisys Solu	106.04	90.5	17.17	142653
Maxvolt Energy	381.55	328.25	16.24	57600
Indigo Paints	1155.35	995.2	16.09	4581620
Swan Defence	939.8	811.9	15.75	3490
Bafna Pharma	183.28	158.34	15.75	10576
Kavveri Defence	102.18	88.28	15.75	86811
Moxsh Overseas	78.1	67.55	15.62	6400
Lumax Auto Tech	1386.3	1199.2	15.6	2617712
Redington	287.5	250.25	14.89	10399997
Mahamaya Steel	696.6	607.1	14.74	30801
Varvee Global	156.31	136.63	14.4	89178
Shri Ahimsa	276.85	242	14.4	117000
Polysil Irrigat	286.1	251.45	13.78	121000

* the % price rise of the last 3 days

Nifty 50 Stocks - Summary Details											
Symbol	LTP	Chng	% Chng	Volume (lacs)	Turnover (crs.)	52w High	Diff with 52w H	52w Low	Diff with 52w L	365 days % chng	30 days % chng
NIFTY 50	25574.35	82.05	0.32%	2435.93	25024	26104	2.03%	21744	17.62%	1.53%	4.12%
ADANIENT	2365.00	-4.40	-0.19%	5.60	133	3045	22.33%	2025	16.79%	-7.12%	-19.11%
ADANIPTS	1444.00	-4.30	-0.30%	11.62	168	1494	3.35%	996	45.03%	2.76%	6.33%
APOLLOHOSP	7534.00	-108.00	-1.41%	3.78	285	8100	6.98%	6001	25.55%	-0.51%	2.97%
ASIANPAINT	2651.90	38.10	1.46%	17.07	453	2905	8.71%	2125	24.81%	11.69%	-5.62%
AXISBANK	1215.50	-7.30	-0.60%	41.41	506	1276	4.75%	934	30.21%	3.59%	5.33%
BAJAJ-AUTO	8770.00	48.50	0.56%	9.93	869	10080	12.99%	7089	23.71%	-2.51%	-12.00%
BAJAJFINSV	2120.10	18.00	0.86%	9.85	208	2195	3.41%	1552	36.64%	4.88%	20.83%
BAJFINANCE	1086.60	20.00	1.88%	56.92	614	1103	1.44%	645	68.44%	4.18%	-84.53%
BEL	416.90	2.65	0.64%	92.88	387	436	4.38%	240	73.53%	0.18%	39.13%
BHARTIARTL	2020.50	19.30	0.96%	74.57	1504	2136	5.39%	1511	33.72%	3.16%	27.47%
CIPLA	1507.90	2.20	0.15%	11.44	173	1673	9.87%	1335	12.95%	-3.59%	-5.46%
COALINDIA	381.55	5.55	1.48%	44.52	169	440	13.35%	349	9.25%	-2.21%	-11.33%
DRREDDY	1198.50	-6.90	-0.57%	34.83	418	1406	14.75%	1020	17.50%	-4.67%	-6.10%
EICHERMOT	6894.50	8.50	0.12%	5.14	352	7123	3.20%	4536	51.99%	-1.13%	43.90%
ETERNAL	301.80	-4.30	-1.40%	339.19	1030	368	18.09%	195	54.93%	-12.12%	#VALUE!
GRASIM	2762.00	37.40	1.37%	4.90	135	2978	7.25%	2277	21.30%	-3.07%	7.06%
HCLTECH	1540.00	27.60	1.82%	15.59	240	2012	23.47%	1303	18.21%	1.13%	-17.69%
HDFCBANK	984.60	2.30	0.23%	159.88	1577	1021	3.52%	812	21.23%	0.14%	-44.01%
HDFCLIFE	750.00	0.75	0.10%	20.47	155	821	8.62%	584	28.36%	0.26%	5.75%
HINDALCO	784.90	-5.50	-0.70%	59.14	468	864	9.16%	546	43.64%	2.13%	21.52%
HINDUNILVR	2409.00	-5.00	-0.21%	7.81	188	2750	12.40%	2136	12.78%	-4.54%	-3.74%
ICICIBANK	1346.80	3.80	0.28%	85.42	1150	1500	10.21%	1186	13.56%	-2.70%	6.68%
INDIGO	5586.00	2.50	0.04%	9.83	550	6233	10.37%	3830	45.85%	-2.64%	39.48%
INFY	1515.00	38.20	2.59%	97.88	1479	2006	24.49%	1307	15.91%	-2.52%	-19.30%
ITC	406.00	1.95	0.48%	66.50	270	491	17.31%	390	4.06%	0.31%	-15.48%
JIOFIN	301.60	2.30	0.77%	88.70	268	347	13.17%	199	51.82%	-2.87%	-5.30%
JSWSTEEL	1180.90	9.20	0.79%	7.40	87	1224	3.51%	880	34.19%	0.33%	17.59%
KOTAKBANK	2090.00	1.70	0.08%	21.73	455	2302	9.21%	1679	24.48%	-2.87%	19.62%
LT	3916.80	34.30	0.88%	13.97	549	4063	3.59%	2965	32.09%	2.60%	6.07%
M&M	3666.00	-24.20	-0.66%	16.21	595	3724	1.55%	2425	51.18%	6.81%	24.04%
MARUTI	15600.00	121.00	0.78%	2.74	426	16660	6.36%	10725	45.45%	-4.83%	36.95%
MAXHEALTH	1099.80	-35.50	-3.13%	19.34	215	1314	16.32%	936	17.47%	-1.82%	5.19%
NESTLEIND	1262.00	-0.70	-0.06%	7.38	94	1312	3.78%	1055	19.62%	5.27%	-45.00%
NTPC	325.30	-0.80	-0.25%	52.47	171	411	20.83%	293	11.10%	-4.00%	-17.99%
ONGC	251.50	-0.70	-0.28%	74.18	187	274	8.04%	205	22.68%	2.38%	-3.94%
POWERGRID	268.35	0.85	0.32%	107.18	288	345	22.31%	247	8.51%	-5.93%	-13.99%
RELIANCE	1490.10	12.10	0.82%	70.68	1055	1551	3.93%	1115	33.66%	6.97%	15.13%
SBILIFE	1990.30	-8.60	-0.43%	10.87	217	2018	1.37%	1373	45.01%	10.41%	27.32%
SBIN	950.55	-5.30	-0.55%	73.43	700	971	2.15%	680	39.79%	8.54%	13.37%
SHRIRAMFIN	820.90	4.55	0.56%	86.24	710	831	1.18%	493	66.39%	22.75%	-72.86%
SUNPHARMA	1692.80	1.40	0.08%	12.36	210	1910	11.37%	1548	9.35%	1.23%	-6.53%
TATACONSUM	1141.20	-26.00	-2.23%	15.86	183	1203	5.12%	883	29.26%	3.61%	17.55%
TATASTEEL	181.50	0.13	0.07%	183.76	333	187	2.91%	123	48.02%	4.32%	22.90%
TCS	3025.00	33.20	1.11%	15.57	471	4495	32.70%	2867	5.53%	-1.21%	-27.86%
TECHM	1396.80	10.10	0.73%	28.83	403	1808	22.73%	1209	15.50%	-4.84%	-17.52%
TITAN	3800.00	30.70	0.81%	6.00	228	3838	0.98%	2925	29.91%	6.72%	18.30%
TMPV	410.70	5.00	1.23%	79.14	325	843	51.27%	376	9.14%	#VALUE!	#VALUE!
TRENT	4284.00	-343.30	-7.42%	68.08	2935	7493	42.83%	4263	0.50%	-1.36%	-26.54%
ULTRACEMCO	11750.00	-99.00	-0.84%	1.97	232	13097	10.28%	10048	16.94%	-3.52%	7.30%
WIPRO	239.85	3.36	1.42%	85.67	205	325	26.11%	228	5.20%	-4.91%	-58.44%

Disclaimer / Disclosures

ANALYST CERTIFICATION

I, Mrs. Vaishali Parekh B.com, Research Analyst, author and the name subscribed to this report, hereby certify that all of the views expressed in this research report accurately reflect our views about the subject issuer(s) or securities. We also certify that no part of our compensation was, is, or will be directly or indirectly related to the specific recommendation(s) or view(s) in this report.

Terms & conditions and other disclosures:

Prabhudas Lilladher Pvt. Ltd, Mumbai, India (hereinafter referred to as "PL") is engaged in the business of Stock Broking, Portfolio Manager, Depository Participant and distribution for third party financial products. PL is a subsidiary of Prabhudas Lilladher Advisory Services Pvt Ltd. which has its various subsidiaries engaged in business of commodity broking, investment banking, financial services (margin funding) and distribution of third party financial/other products, details in respect of which are available at www.plindia.com

This document has been prepared by the Research Division of PL and is meant for use by the recipient only as information and is not for circulation. This document is not to be reported or copied or made available to others without prior permission of PL. It should not be considered or taken as an offer to sell or a solicitation to buy or sell any security.

The information contained in this report has been obtained from sources that are considered to be reliable. However, PL has not independently verified the accuracy or completeness of the same. Neither PL nor any of its affiliates, its directors or its employees accepts any responsibility of whatsoever nature for the information, statements and opinion given, made available or expressed herein or for any omission therein.

Recipients of this report should be aware that past performance is not necessarily a guide to future performance and value of investments can go down as well. The suitability or otherwise of any investments will depend upon the recipient's particular circumstances and, in case of doubt, advice should be sought from an independent expert/advisor.

Either PL or its affiliates or its directors or its employees or its representatives or its clients or their relatives may have position(s), make market, act as principal or engage in transactions of securities of companies referred to in this report and they may have used the research material prior to publication.

PL may from time to time solicit or perform investment banking or other services for any company mentioned in this document.

PL is registered as Research Analyst under Securities and Exchange Board of India (Research Analysts) Regulations, 2014 PL submits that no material disciplinary action has been taken on us by any Regulatory Authority impacting Equity Research Analysis activities.

PL or its research analysts or its associates or his relatives do not have any financial interest in the subject company.

PL or its research analysts or its associates or his relatives do not have actual/beneficial ownership of one per cent or more securities of the subject company at the end of the month immediately preceding the date of publication of the research report.

PL or its research analysts or its associates or his relatives do not have any material conflict of interest at the time of publication of the research report.

PL or its associates might have received compensation from the subject company in the past twelve months.

PL or its associates might have managed or co-managed public offering of securities for the subject company in the past twelve months or mandated by the subject company for any other assignment in the past twelve months.

PL or its associates might have received any compensation for investment banking or merchant banking or brokerage services from the subject company in the past twelve months.

PL or its associates might have received any compensation for products or services other than investment banking or merchant banking or brokerage services from the subject company in the past twelve months PL or its associates might have received any compensation or other benefits from the subject company or third party in connection with the research report.

PL encourages independence in research report preparation and strives to minimize conflict in preparation of research report. PL or its analysts did not receive any compensation or other benefits from the subject Company or third party in connection with the preparation of the research report. PL or its Research Analysts do not have any material conflict of interest at the time of publication of this report.

It is confirmed that Mrs.Vaishali Parekh B.com, Research Analyst of this report has not received any compensation from the companies mentioned in the report in the preceding twelve months compensation of our Research Analysts is not based on any specific merchant banking, investment banking or brokerage service transactions.

The Research analysts for this report certifies that all of the views expressed in this report accurately reflect his or her personal views about the subject company or companies and its or their securities, and no part of his or her compensation was, is or will be, directly or indirectly related to specific recommendations or views expressed in this report.

The research analysts for this report has not served as an officer, director or employee of the subject company PL or its research analysts have not engaged in market making activity for the subject company

Our sales people, traders, and other professionals or affiliates may provide oral or written market commentary or trading strategies to our clients that reflect opinions that are contrary to the opinions expressed herein, and our proprietary trading and investing businesses may make investment decisions that are inconsistent with the recommendations expressed herein. In reviewing these materials, you should be aware that any or all of the foregoing, among other things, may give rise to real or potential conflicts of interest.

PL and its associates, their directors and employees may (a) from time to time, have a long or short position in, and buy or sell the securities of the subject company or (b) be engaged in any other transaction involving such securities and earn brokerage or other compensation or act as a market maker in the financial instruments of the subject company or act as an advisor or lender/borrower to the subject company or may have any other potential conflict of interests with respect to any recommendation and other related information and opinions.