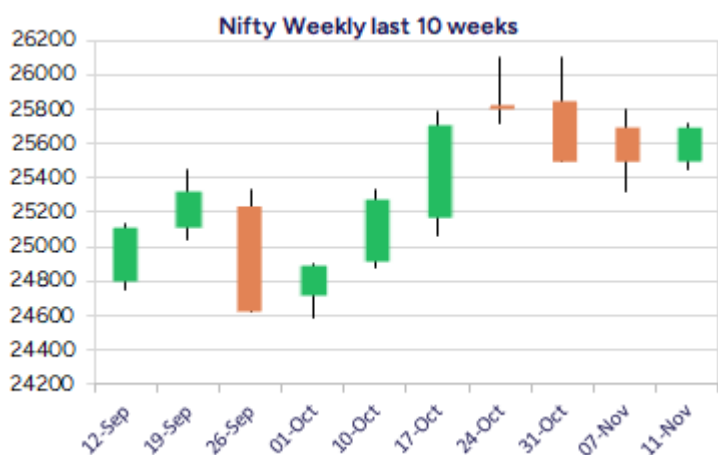
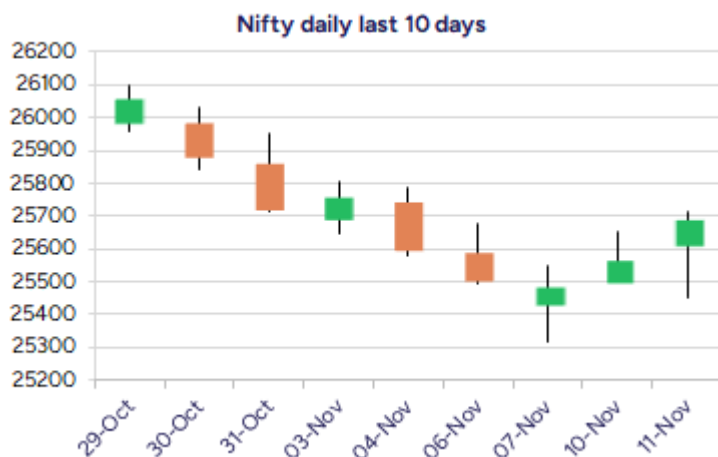


Date: 12th November 2025

* Sensex 83871.32 + 335.97

* Nifty 25694.95 + 120.60

* Bank Nifty 58138.15 + 200.60



*Blue candle → Close rate > Open rate * Red candle → Close rate < Open rate

Market Preview

Nifty bounces back; extends gains further

Nifty recovered strongly after a weak opening session, with buyers stepping in to indicate a significant surge to end near the 25700 zone with bias maintained positive. BankNifty slowly and gradually is picking up with intraday bounce back witnessed to maintain the optimistic view intact for the coming sessions. The market breadth was overall flat with the advance decline indicating a neutral ratio at close.

Market Forecast

Nifty daily range 25550 - 25900

After a weak start in the morning session hitting the low at 25450 level, Nifty index witnessed a strong bounce back to close near the 25700 zone with the broader markets also indicating active participation to ease out the sentiment to some extent. The overall bias has been maintained with a cautiously positive approach and once a decisive breach above the 25750 zone is established, there can be conviction for further rise in the coming days having targets of 26100 and 26500 levels expected, with the near-term support positioned near the 25300 zone which needs to be sustained.

BankNifty recently witnessing a decent pullback from the low made near 57200 zone, has once again indicated a significant bounce back from 57600 level during the intraday session to gain momentum closing near the 58150 zone with bias gradually improving and expecting for further upward move with the overall approach maintained cautiously optimistic. The support from current level is positioned near the 50EMA at 56700 level which needs to be sustained.

The support for the day is seen at 25550 levels, while the resistance is seen at 25900 levels. BankNifty would have the daily range of 57800-58800 levels.

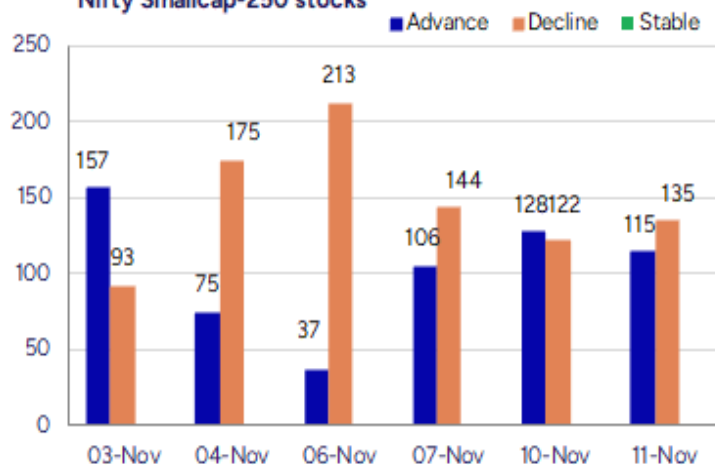
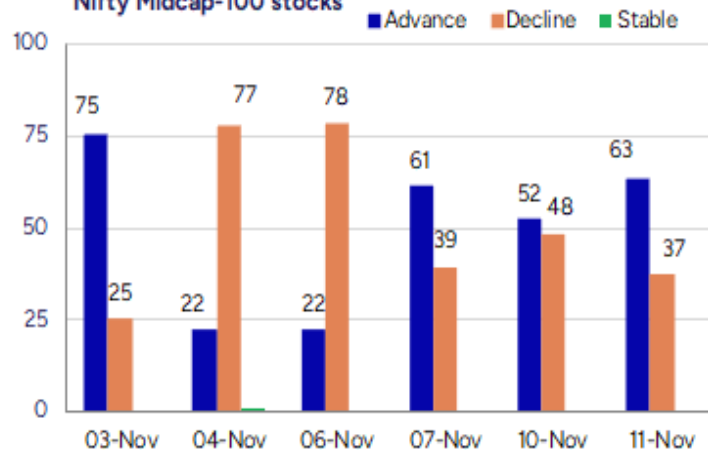
Indices	Period	Closing	% Chng	Trend	Reversal	2 Sup	1 Sup	Pivot	1 Res	2 Res
Nifty	Daily	25694.95	0.47%	1	25637.40	25353	25524	25620	25791	25887
	Weekly	25492.30	-0.89%	-1	25502.90	25054	25273	25538	25757	26021
	Monthly	25722.10	4.51%	1	25438.50	23979	24851	25477	26349	26976
Bank Nifty	Daily	58138.15	0.35%	1	58044.10	57380	57759	57973	58352	58566
	Weekly	57876.80	0.17%	6	57268.10	56673	57275	57760	58362	58846
	Monthly	57776.35	5.75%	1	57492.70	52984	55380	56979	59375	60974
Sensex	Daily	83871.32	0.40%	1	83667.25	82832	83351	83644	84164	84456
	Weekly	83216.28	-0.86%	-1	83195.40	81884	82550	83337	84003	84791
	Monthly	83938.71	4.57%	1	83147.90	77999	80969	83130	86099	88260

Gainers - Losers (Nifty 500 Stocks)
Gainers

Company Name	Last Price	% Gain	Volume
Sahasra Electro	303.5	15.84	396400
Gretex Corporat	316.65	15.13	862393
Yatra Online	165.21	13.86	7853645
Venus Remedies	531.05	13.24	884469
Zuari Ind.	344.75	12.81	5586968
Apex Frozen	272.95	12.16	2889057
Durlax Top Surf	43.65	12.07	74000

Losers

Company Name	Last Price	% Loss	Volume
Positron Energy	300	-20	386400
M & B Eng	436	-15.22	4803327
Fischer Medical	77.86	-15.17	4563647
HLE Glascoat	508.3	-13.22	3060582
Tamilnadu Petro	107.96	-12.72	3646814
Lords Chloro	197.85	-11	440909
Paisalo Digital	32.37	-10.7	15901676

Nifty Smallcap-250 stocks

Nifty Midcap-100 stocks


Nifty Daily chart with RSI indicator



BankNifty Daily chart with RSI indicator



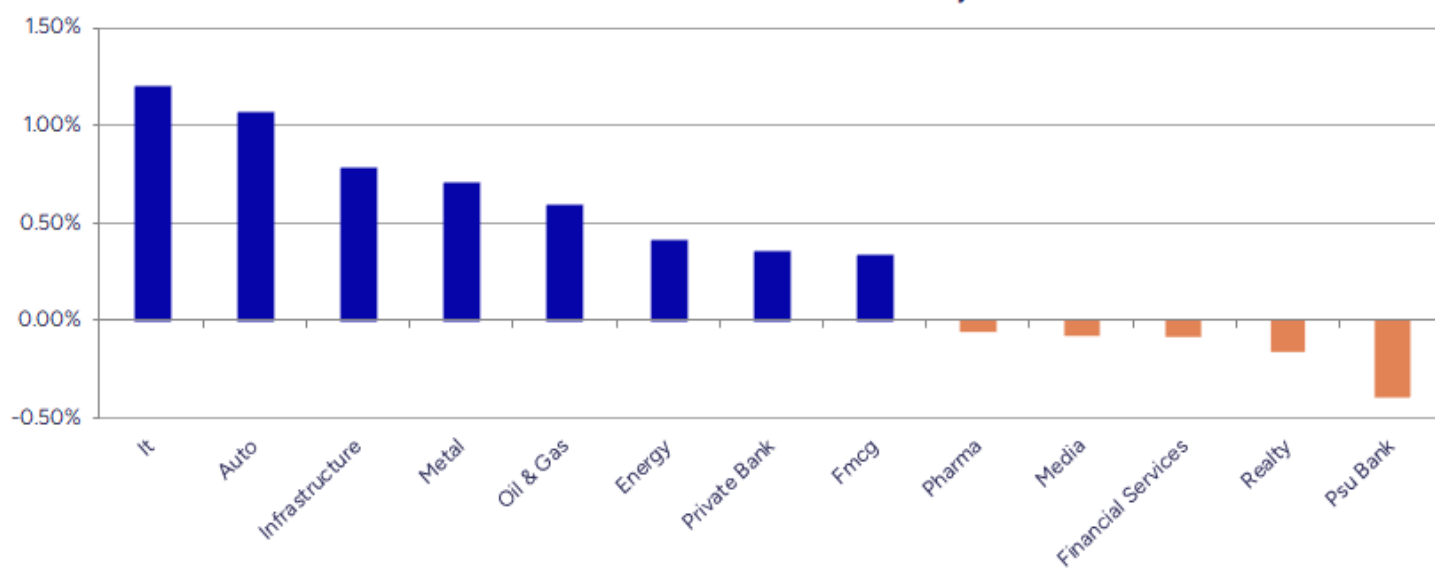
Breakouts - Cross above 200 DMA			
Company Name	LCP	Change %	200 DMA
Esab India	5259.2	5.69	4976.02
Kalyani Forge	707.85	5.50	670.95
Aristo Bio-Tech	133	4.29	127.53
Vels Film	65.55	3.73	63.19
Orient Abrasive	39.14	3.71	37.74
Unihealth Hospi	164	3.54	158.4
Transrail Light	655.8	3.09	636.16
SMS Lifescience	1237.5	3.05	1200.83
Gillanders Arbu	122.14	2.90	118.7
Williamson Mago	33.38	2.83	32.46
Atul Auto	487.7	2.70	474.86
Arvind Port	61.95	2.53	60.42
Shilpa	393.4	1.81	386.4
Twamev Construc	33.43	1.80	32.84
Sunflag Iron	266.55	1.57	262.43
Amber Enterpris	7144.5	1.28	7053.93
Ndr Auto Compon	906.05	1.21	895.23
Gokaldas Export	871.4	1.19	861.12

* Stocks crossing above its Simple Moving Average (200DMA)

Breakdown - Cross below 200 DMA			
Company Name	LCP	Change %	200 DMA
Positron Energy	300	-8.48	327.78
Paisalo Digital	32.37	-7.83	35.12
TIL	269	-6.62	288.08
Guj Amb Exports	106.59	-3.75	110.74
Cosmo First	837.75	-3.72	870.08
Shanthala	32.6	-3.58	33.81
Lovable Lingeri	92.04	-3.33	95.21
Destiny Logisti	116.9	-3.20	120.77
Arihant Super	394.05	-3.14	406.83
Orient Bell	273.45	-2.94	281.72
Omfurn India	103.85	-2.82	106.86
DAM Capital Adv	236.17	-2.78	242.93
Shreyans Ind	206.01	-2.32	210.91
Karnika Industr	133.55	-2.11	136.43
Manorama Indust	1268.2	-2.04	1294.61
Cords Cable Ind	178.07	-1.93	181.58
Greenpanel Ind	272.5	-1.93	277.86
Visaka Ind	76.67	-1.89	78.15

* Stocks crossing below its Simple Moving Average (200DMA)

Sectoral Indices - Gainers Losers for the day



Stocks witnessing a volume surge as compared to their 5 day average volume

Watch out for the stocks that have seen a huge spurt in its share price over the last three days

Volume Shockers - NSE					
Company name	LCP	% Chg	Volume	Avg Vol *	% Chg
Esab India	5259.2	8.43	315791	2094	14981
Panama Petro	294.8	7.08	3074248	40932	7411
R M Drip & Spri	79.8	-2.59	590076	9800	5921
Atal	24.79	1.52	5094723	100889	4950
Krishival Foods	494.15	-0.59	55220	1200	4502
Zuari Ind.	344.75	12.81	5586968	123820	4412
Responsive Ind	202.02	0.58	1736194	39771	4265
Unichem Labs	481.9	4.28	276636	6857	3934
Atul Auto	487.7	9.41	4007029	103541	3770
Syrma SGS	831.05	2.85	19204808	501243	3731
Seamec	833.35	5.39	829464	22196	3637
Venus Remedies	531.05	13.24	884469	24083	3573
Poly Medicure	2063.4	10.8	3455260	103698	3232
Apex Frozen	272.95	12.16	2889057	86964	3222
Rhetan TMT	22.16	-2.38	22184084	692733	3102
Nirman Agri	70	-4.96	644700	22200	2804
ZIM Lab	76.02	8.34	4078864	151182	2598
HEG	536.2	3.25	23694061	932123	2442
UTKARSHBNK	16.14	-4.5	24057011	1045115	2202
Sapphire Foods	255.5	-3.66	1340859	68650	1853

* the Average Volume of last 5 days

Price Shockers - NSE				
Company name	LCP	Prv Close	% Chg	Volume
Bliss GVS	155.9	127.9	21.89	19107654
Gallantt Ispat	668.1	552.85	20.85	1977575
Indian Emulsifi	121.3	100.8	20.34	658500
Lumax Auto Tech	1429.5	1200.2	19.11	1066150
Venus Remedies	531.05	446.3	18.99	884469
Party Cruisers	76.5	64.5	18.6	23000
Indigo Paints	1188	1004.1	18.31	1248110
Ushanti Colour	48.75	41.25	18.18	0
Apex Frozen	272.95	233.52	16.89	2889057
Jay Jalaram	192.6	166.8	15.47	10250
Silly Monks Ent	26.4	23	14.78	75532
Voltamp Trans	8123.5	7158	13.49	136566
NALCO	265.66	234.73	13.18	36187656
Jain Resource	435.4	385.85	12.84	9104998
Indian Metals	1346.5	1197	12.49	575759
Maxvolt Energy	390.1	348.1	12.07	77600
Zuari Ind.	344.75	308.35	11.8	5586968
Nitin Spinners	340	305.35	11.35	260382
Esab India	5259.2	4761.8	10.45	315791
Panama Petro	294.8	267.15	10.35	3074248

* the % price rise of the last 3 days

Nifty 50 stocks - Summary Details											
Symbol	LTP	Chng	% Chng	Volume (lacs)	Turnover (crs.)	52w High	Diff with 52w H	52w Low	Diff with 52w L	365 days % chng	30 days % chng
NIFTY 50	25694.95	120.60	0.47%	2977.14	28285.33	26104.20	1.57%	21743.65	18.17%	1.14%	5.91%
ADANIENT	2370.20	-0.50	-0.02%	6.34	149.62	2946.80	19.57%	2025.00	17.05%	-7.06%	-19.06%
ADANIPTS	1474.10	29.20	2.02%	22.59	330.05	1494.00	1.33%	995.65	48.05%	2.52%	6.08%
APOLLOHOSP	7520.00	-9.50	-0.13%	3.07	229.53	8099.50	7.15%	6001.00	25.31%	-1.97%	1.46%
ASIANPAINT	2660.00	9.60	0.36%	7.76	205.46	2666.80	0.25%	2124.75	25.19%	13.26%	-4.30%
AXISBANK	1222.50	5.50	0.45%	56.15	684.74	1276.10	4.20%	933.50	30.96%	3.10%	4.83%
BAJAJ-AUTO	8900.00	128.00	1.46%	3.81	337.28	10032.90	11.29%	7089.35	25.54%	-1.95%	-11.49%
BAJAJFINSV	1992.90	-125.40	-5.92%	49.44	981.63	2195.00	9.21%	1551.65	28.44%	5.69%	21.76%
BAJFINANCE	1009.10	-75.90	-7.00%	237.63	2396.01	1102.50	8.47%	645.10	56.43%	5.97%	-84.27%
BEL	426.80	9.95	2.39%	248.89	1056.58	436.00	2.11%	240.25	77.65%	0.81%	40.00%
BHARTIARTL	2044.50	24.70	1.22%	148.26	3028.96	2135.60	4.27%	1511.00	35.31%	4.12%	28.66%
CIPLA	1514.90	3.40	0.22%	8.51	128.78	1673.00	9.45%	1335.00	13.48%	-3.22%	-5.09%
COALINDIA	382.90	1.55	0.41%	32.99	125.78	427.45	10.42%	349.25	9.63%	-0.82%	-10.07%
DRREDDY	1213.00	14.30	1.19%	10.49	126.85	1405.90	13.72%	1020.00	18.92%	-5.20%	-6.62%
EICHERMOT	6873.00	6.50	0.09%	4.10	279.16	7122.50	3.50%	4536.05	51.52%	-1.41%	43.49%
ETERNAL	306.20	4.75	1.58%	358.24	1090.28	368.45	16.90%	194.80	57.19%	-13.45%	#VALUE!
GRASIM	2771.20	8.30	0.30%	4.00	110.42	2977.80	6.94%	2276.95	21.71%	-1.71%	8.57%
HCLTECH	1571.50	31.00	2.01%	22.71	353.88	2012.20	21.90%	1302.75	20.63%	3.01%	-16.16%
HDFCBANK	992.00	7.50	0.76%	102.01	1007.05	1020.50	2.79%	812.15	22.14%	0.37%	-43.89%
HDFCLIFE	764.35	13.65	1.82%	23.04	174.90	820.75	6.87%	584.30	30.81%	0.45%	5.96%
HINDALCO	792.50	7.30	0.93%	54.11	425.64	864.00	8.28%	546.45	45.03%	1.45%	20.72%
HINDUNILVR	2430.00	21.20	0.88%	14.22	344.32	2750.00	11.64%	2136.00	13.76%	-4.75%	-3.94%
ICICIBANK	1359.00	11.00	0.82%	83.05	1125.26	1500.00	9.40%	1186.00	14.59%	-2.34%	7.08%
INDIGO	5787.00	198.50	3.55%	9.59	548.55	6232.50	7.15%	3830.00	51.10%	-2.55%	39.61%
INFY	1531.10	17.60	1.16%	136.93	2086.62	2006.45	23.69%	1307.00	17.15%	-0.09%	-17.29%
ITC	407.20	1.65	0.41%	120.05	487.75	491.00	17.07%	390.15	4.37%	0.68%	-15.17%
JIOFIN	305.45	3.50	1.16%	107.52	325.38	347.35	12.06%	198.65	53.76%	-2.01%	-4.46%
JSWSTEEL	1186.70	7.40	0.63%	15.89	189.09	1223.90	3.04%	880.00	34.85%	0.98%	18.36%
KOTAKBANK	2088.20	-4.50	-0.22%	21.63	451.17	2301.90	9.28%	1679.05	24.37%	-2.67%	19.87%
LT	3954.00	35.50	0.91%	17.75	700.19	4062.60	2.67%	2965.30	33.34%	3.55%	7.05%
M&M	3745.10	81.20	2.22%	30.44	1131.78	3759.00	0.37%	2425.00	54.44%	6.05%	23.16%
MARUTI	15651.00	68.00	0.44%	1.82	283.42	16660.00	6.06%	10725.00	45.93%	-4.19%	37.87%
MAXHEALTH	1096.50	-1.50	-0.14%	17.79	194.16	1314.30	16.57%	936.25	17.12%	-5.05%	1.74%
NESTLEIND	1268.00	5.10	0.40%	7.30	92.35	1311.60	3.32%	1055.00	20.19%	5.29%	-44.99%
NTPC	327.00	1.55	0.48%	61.04	198.74	400.90	18.43%	292.80	11.68%	-4.19%	-18.16%
ONGC	249.90	-1.50	-0.60%	161.84	402.44	273.50	8.63%	205.00	21.90%	2.05%	-4.25%
POWERGRID	268.15	-0.05	-0.02%	111.55	297.62	345.40	22.37%	247.30	8.43%	-7.25%	-15.19%
RELIANCE	1493.80	4.50	0.30%	71.28	1061.69	1551.00	3.69%	1114.85	33.99%	7.79%	16.01%
SBILIFE	1995.60	6.30	0.32%	9.02	179.81	2017.90	1.11%	1372.55	45.39%	9.88%	26.71%
SBIN	954.00	2.85	0.30%	86.49	822.64	971.40	1.79%	680.00	40.29%	8.01%	12.81%
SHRIRAMFIN	831.00	9.90	1.21%	73.36	601.76	833.30	0.28%	493.35	68.44%	23.46%	-72.70%
SUNPHARMA	1719.00	21.20	1.25%	13.15	224.59	1910.00	10.00%	1548.00	11.05%	1.61%	-6.18%
TATACONSUM	1153.10	10.40	0.91%	11.77	135.39	1202.80	4.13%	882.90	30.60%	1.44%	15.08%
TMPV	408.10	-2.35	-0.57%	81.21	329.52	831.45	50.92%	376.30	8.45%	#VALUE!	#VALUE!
TATASTEEL	181.10	-0.38	-0.21%	141.09	254.96	186.94	3.12%	122.62	47.69%	4.38%	22.98%
TCS	3049.00	23.80	0.79%	28.07	852.45	4494.90	32.17%	2866.60	6.36%	-0.10%	-27.05%
TECHM	1406.80	9.00	0.64%	24.88	349.17	1807.70	22.18%	1209.40	16.32%	-4.08%	-16.86%
TITAN	3809.10	6.10	0.16%	6.69	253.64	3837.70	0.75%	2925.00	30.23%	7.68%	19.36%
TRENT	4314.90	31.20	0.73%	18.03	777.33	7493.05	42.41%	4262.60	1.23%	-8.68%	-31.99%
ULTRACEMCO	11818.00	90.00	0.77%	1.26	148.38	13097.00	9.77%	10047.85	17.62%	-4.50%	6.20%
WIPRO	241.75	1.91	0.80%	88.31	212.56	324.60	25.52%	228.00	6.03%	-3.56%	-57.85%

Disclaimer / Disclosures

ANALYST CERTIFICATION

I, Mrs. Vaishali Parekh B.com, Research Analyst, author and the name subscribed to this report, hereby certify that all of the views expressed in this research report accurately reflect our views about the subject issuer(s) or securities. We also certify that no part of our compensation was, is, or will be directly or indirectly related to the specific recommendation(s) or view(s) in this report.

Terms & conditions and other disclosures:

Prabhudas Lilladher Pvt. Ltd, Mumbai, India (hereinafter referred to as "PL") is engaged in the business of Stock Broking, Portfolio Manager, Depository Participant and distribution for third party financial products. PL is a subsidiary of Prabhudas Lilladher Advisory Services Pvt Ltd. which has its various subsidiaries engaged in business of commodity broking, investment banking, financial services (margin funding) and distribution of third party financial/other products, details in respect of which are available at www.plindia.com

This document has been prepared by the Research Division of PL and is meant for use by the recipient only as information and is not for circulation. This document is not to be reported or copied or made available to others without prior permission of PL. It should not be considered or taken as an offer to sell or a solicitation to buy or sell any security.

The information contained in this report has been obtained from sources that are considered to be reliable. However, PL has not independently verified the accuracy or completeness of the same. Neither PL nor any of its affiliates, its directors or its employees accepts any responsibility of whatsoever nature for the information, statements and opinion given, made available or expressed herein or for any omission therein.

Recipients of this report should be aware that past performance is not necessarily a guide to future performance and value of investments can go down as well. The suitability or otherwise of any investments will depend upon the recipient's particular circumstances and, in case of doubt, advice should be sought from an independent expert/advisor.

Either PL or its affiliates or its directors or its employees or its representatives or its clients or their relatives may have position(s), make market, act as principal or engage in transactions of securities of companies referred to in this report and they may have used the research material prior to publication.

PL may from time to time solicit or perform investment banking or other services for any company mentioned in this document.

PL is registered as Research Analyst under Securities and Exchange Board of India (Research Analysts) Regulations, 2014 PL submits that no material disciplinary action has been taken on us by any Regulatory Authority impacting Equity Research Analysis activities.

PL or its research analysts or its associates or his relatives do not have any financial interest in the subject company.

PL or its research analysts or its associates or his relatives do not have actual/beneficial ownership of one per cent or more securities of the subject company at the end of the month immediately preceding the date of publication of the research report.

PL or its research analysts or its associates or his relatives do not have any material conflict of interest at the time of publication of the research report.

PL or its associates might have received compensation from the subject company in the past twelve months.

PL or its associates might have managed or co-managed public offering of securities for the subject company in the past twelve months or mandated by the subject company for any other assignment in the past twelve months.

PL or its associates might have received any compensation for investment banking or merchant banking or brokerage services from the subject company in the past twelve months.

PL or its associates might have received any compensation for products or services other than investment banking or merchant banking or brokerage services from the subject company in the past twelve months PL or its associates might have received any compensation or other benefits from the subject company or third party in connection with the research report.

PL encourages independence in research report preparation and strives to minimize conflict in preparation of research report. PL or its analysts did not receive any compensation or other benefits from the subject Company or third party in connection with the preparation of the research report. PL or its Research Analysts do not have any material conflict of interest at the time of publication of this report.

It is confirmed that Mrs.Vaishali Parekh B.com, Research Analyst of this report has not received any compensation from the companies mentioned in the report in the preceding twelve months compensation of our Research Analysts is not based on any specific merchant banking, investment banking or brokerage service transactions.

The Research analysts for this report certifies that all of the views expressed in this report accurately reflect his or her personal views about the subject company or companies and its or their securities, and no part of his or her compensation was, is or will be, directly or indirectly related to specific recommendations or views expressed in this report.

The research analysts for this report has not served as an officer, director or employee of the subject company PL or its research analysts have not engaged in market making activity for the subject company

Our sales people, traders, and other professionals or affiliates may provide oral or written market commentary or trading strategies to our clients that reflect opinions that are contrary to the opinions expressed herein, and our proprietary trading and investing businesses may make investment decisions that are inconsistent with the recommendations expressed herein. In reviewing these materials, you should be aware that any or all of the foregoing, among other things, may give rise to real or potential conflicts of interest.

PL and its associates, their directors and employees may (a) from time to time, have a long or short position in, and buy or sell the securities of the subject company or (b) be engaged in any other transaction involving such securities and earn brokerage or other compensation or act as a market maker in the financial instruments of the subject company or act as an advisor or lender/borrower to the subject company or may have any other potential conflict of interests with respect to any recommendation and other related information and opinions.