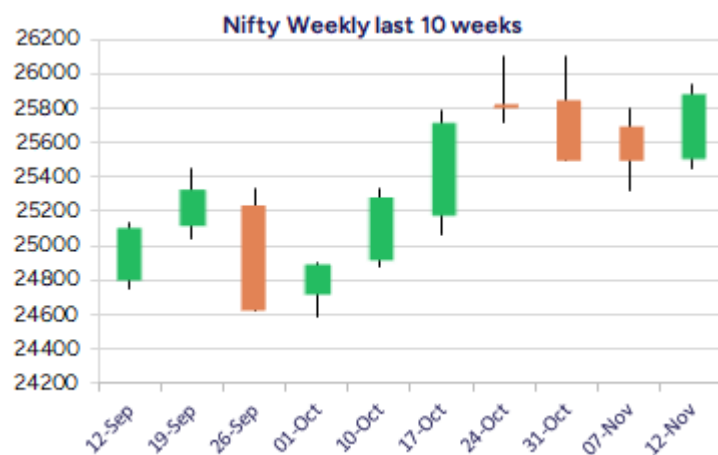
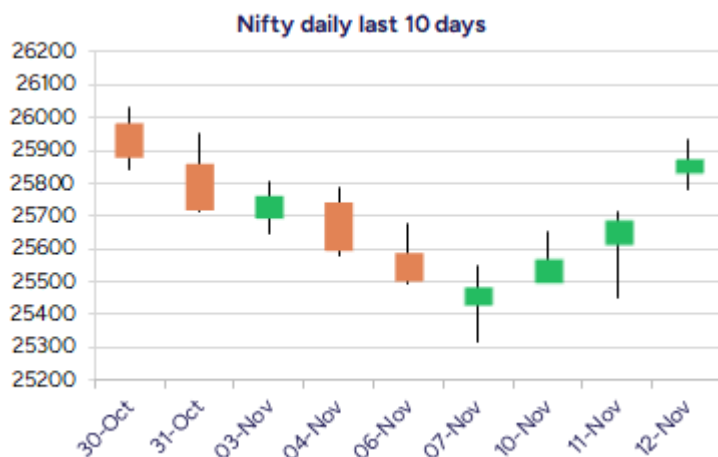


Date: 13<sup>th</sup> November 2025

\* Sensex 84466.51 + 595.19

\* Nifty 25875.80 + 180.85

\* Bank Nifty 58274.65 + 136.50



\*Blue candle → Close rate > Open rate \* Red candle → Close rate < Open rate

## Market Preview

### Nifty surges ahead; aims to retest 26100 zone

Nifty witnessed a strong opening with a gap up and gathered strength surging ahead as the day progressed to touch the 25930 zone during the intraday session with further rise expected. BankNifty after the positive opening, slipped down with profit booking witnessed to once again being gripped between the tight range finding resistance near the 58500 zone. The market breadth was positive with the advance decline indicating a ratio of almost 2:1 at close.

## Market Forecast

### Nifty daily range 25750 - 26100

Nifty continued with the positive move to surge ahead with strength indicated and has crossed above our important hurdle at 25750 zone to further strengthen the trend and can anticipate retesting the previous peak level of 26100 zone in the coming sessions. The index would now have the elevated near-term support zone at 25700 level which needs to be sustained to maintain the overall bias intact and once a breakout above 26100 level is confirmed, one can expect for higher targets of 26600 and 27000 levels in the coming days.

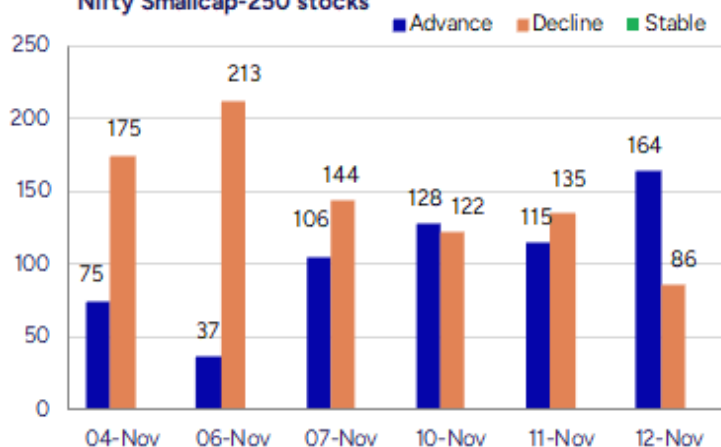
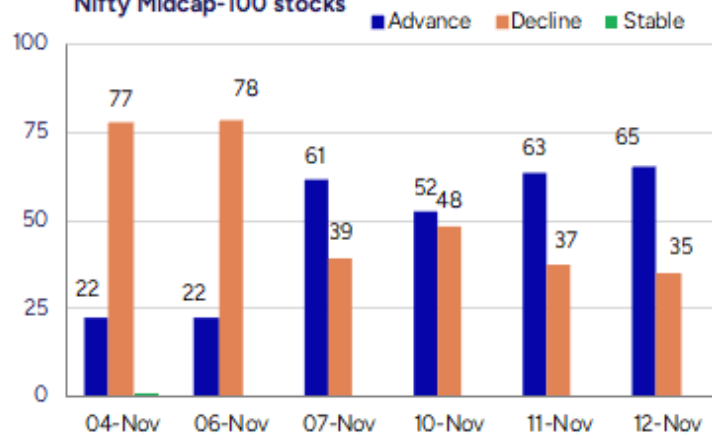
BankNifty after opening on a positive note, once again found resistance near the 58500 zone and in the final hours slipped down to end just below the 58300 level with bias still maintained intact with consolidation happening and would need a decisive breach above the hurdle at 58500 level to trigger for fresh upward move in the coming days. The index would have the important and crucial support positioned near the 50EMA at 56800 level which needs to be sustained.

The support for the day is seen at 25750 levels, while the resistance is seen at 26100 levels. BankNifty would have the daily range of 57800-58800 levels.

Indices	Period	Closing	% Chng	Trend	Reversal	2 Sup	1 Sup	Pivot	1 Res	2 Res
Nifty	Daily	25875.80	0.70%	2	25692.45	25710	25793	25864	25947	26017
	Weekly	25492.30	-0.89%	-1	25502.90	25054	25273	25538	25757	26021
	Monthly	25722.10	4.51%	1	25438.50	23979	24851	25477	26349	26976
Bank Nifty	Daily	58274.65	0.23%	2	58123.50	57982	58128	58318	58464	58654
	Weekly	57876.80	0.17%	6	57268.10	56673	57275	57760	58362	58846
	Monthly	57776.35	5.75%	1	57492.70	52984	55380	56979	59375	60974
Sensex	Daily	84466.51	0.71%	2	83857.85	83943	84205	84428	84690	84914
	Weekly	83216.28	-0.86%	-1	83195.40	81884	82550	83337	84003	84791
	Monthly	83938.71	4.57%	1	83147.90	77999	80969	83130	86099	88260

**Gainers - Losers ( Nifty 500 Stocks )**

Gainers				Losers			
Company Name	Last Price	% Gain	Volume	Company Name	Last Price	% Loss	Volume
Sacheerome	266.4	20	380400	Durlax Top Surf	37.7	-13.63	384000
Pearl Global In	1693.6	19.99	2587672	Hb Stockhol	86.26	-13.37	215484
Ecos India Mobi	231.06	19.39	7498231	Sharda Motor	1046.4	-10.9	803923
Sahasra Electro	353.8	16.57	430000	Sahaj Solar	183.5	-10.75	177200
Accretion Pharm	69.9	16.5	54000	Envirotech Sys	139.65	-9.96	176000
Indo Count	315	15.79	4705898	Inspire Films	14.5	-9.66	22000
Indowind Energy	17.1	14.92	1778206	Gajanand Intl	11	-9.47	12000

**Nifty Smallcap-250 stocks**

**Nifty Midcap-100 stocks**


## Nifty Daily chart with RSI indicator



## BankNifty Daily chart with RSI indicator



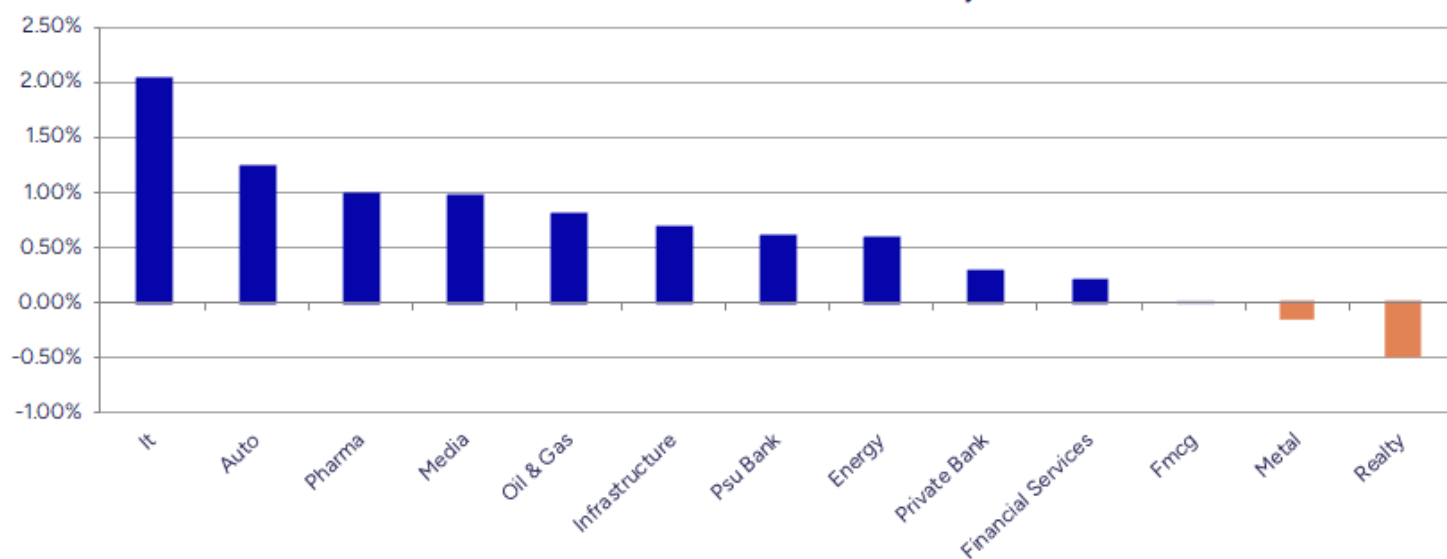
Breakouts - Cross above 200 DMA			
Company Name	LCP	Change %	200 DMA
Indo Count	315	11.26	283.13
Sahasra Electro	353.8	11.03	318.64
Advanced Enzyme	337.8	8.44	311.52
AMSL	270.5	6.40	254.23
RSWM	164.05	5.48	155.52
Abans Financial	218.41	5.19	207.64
Unicommerce Eso	136.59	4.47	130.75
V-Mart Retail	831.55	4.19	798.09
Ganesh Green	433	4.11	415.89
Dishman Carbogeo	255.6	3.52	246.91
CAMS	3963.4	3.24	3839.06
SecMark Consult	126.3	3.00	122.62
PDS	403.05	2.72	392.38
Adani Enterpris	2476.1	2.67	2411.65
Lupin	2038.4	2.60	1986.76
Airo Lam	107.94	2.39	105.42
WS Industries	82.07	2.37	80.17
DDEVPLASTIK	291.75	2.24	285.35

\* Stocks crossing above its Simple Moving Average (200DMA)

Breakdown - Cross below 200 DMA			
Company Name	LCP	Change %	200 DMA
Awfis Space Sol	580	-7.21	625.04
Surya Roshni	279.35	-2.99	287.97
Infinium Pharma	260.6	-2.92	268.44
PI Industries	3586.1	-2.80	3689.31
Arvind Port	59	-2.20	60.33
Steel Str Wheel	213.99	-1.97	218.29
Sundaram Fin	4690	-1.77	4774.48
Asian Hotel (E)	143	-1.69	145.46
Bharat Rasayan	10049	-1.64	10216.27
Shivalik Bimeta	487	-1.38	493.82
Bulkcorp Intern	80	-1.15	80.93
Bombay Burmah	1887	-1.08	1907.58
Setco Auto	17.38	-1.08	17.57
Starteck Financ	298.05	-1.02	301.11
Proventus Agro	1240	-0.93	1251.61
Transport Corp	1111.2	-0.83	1120.48
Bikaji Foods	715.1	-0.81	720.91
Slone Infosyste	300	-0.80	302.41

\* Stocks crossing below its Simple Moving Average (200DMA)

Sectoral Indices - Gainers Losers for the day



Stocks witnessing a volume surge as compared to their 5 day average volume

Watch out for the stocks that have seen a huge spurt in its share price over the last three days

Volume Shockers - NSE					
Company name	LCP	% Chg	Volume	Avg Vol *	% Chg
Globus Spirits	1179	7.41	2882421	49220	5756
Karnika Industr	133.05	-0.37	489000	9360	5124
Krishival Foods	480.1	-2.84	60429	1200	4936
Atal	24.95	0.65	5023851	100889	4880
Kirloskar Oil	1054	11.49	11348267	254178	4365
Yatra Online	186	12.58	35205394	799733	4302
Advanced Enzyme	337.8	9.27	4053952	98502	4016
Sintercom India	117.52	2.75	78188	2470	3066
Syrma SGS	894.65	7.65	15091716	501243	2911
UTKARSHBNK	16.47	2.04	30971550	1045115	2863
IOL Chemicals	98.83	11.3	26190527	943966	2675
Indo Count	315	15.79	4705898	172878	2622
KCK Industries	26.7	4.71	302500	13600	2124
R M Drip & Spri	78.88	-1.15	198560	9800	1926
Pearl Global In	1693.6	19.99	2587672	131638	1866
AB Cotspin	407	-2.83	51061	2700	1791
BLS Internation	336.65	9.12	25444026	1391600	1728
Durlax Top Surf	37.7	-13.63	384000	23200	1555
Indowind Energy	17.1	14.92	1778206	108652	1537
Namo Ewaste Man	212	10.65	719200	44800	1505

\* the Average Volume of last 5 days

Price Shockers - NSE				
Company name	LCP	Prv Close	% Chg	Volume
Bliss GVS	160.67	127.9	25.62	1973705
Pearl Global In	1693.6	1364.1	24.16	2593063
Safe Enterprise	239.2	195.75	22.2	887500
Indigo Paints	1222.45	1004.1	21.75	416748
Indian Emulsifi	122.5	100.8	21.53	273000
Jay Jalaram	202.2	166.8	21.22	54500
Party Cruisers	78.05	64.5	21.01	6000
Venus Remedies	537.75	446.3	20.49	200561
Lumax Auto Tech	1424.7	1200.2	18.71	325106
Kavveri Defence	112.64	97.32	15.74	110740
Moxsh Overseas	86.1	74.4	15.73	3200
Voltamp Trans	8282.5	7158	15.71	72771
Mahamaya Steel	767.7	663.65	15.68	32652
Apex Frozen	269.83	233.52	15.55	249417
ANB Metal Cast	351.7	304.5	15.5	26400
Simbhaoli Sugar	11.87	10.28	15.47	21406
Rico Auto	93.06	80.62	15.43	3635994
Namo Ewaste	215.25	186.55	15.38	721600
Indian Metals	1370.8	1197	14.52	293119
Sri Adhikari	889.95	779.55	14.16	1272

\* the % price rise of the last 3 days

Nifty 50 stocks - Summary Details											
Symbol	LTP	Chng	% Chng	Volume (lacs)	Turnover (crs.)	52w High	Diff with 52w H	52w Low	Diff with 52w L	365 days % chng	30 days % chng
NIFTY 50	25875.80	180.85	0.70%	3438.33	30630.66	26104.20	0.87%	21743.65	19.00%	1.62%	6.41%
ADANI	2485.20	118.40	5.00%	66.85	1650.05	2946.80	15.66%	2025.00	22.73%	-7.22%	-19.20%
ADANI	1505.00	30.60	2.08%	46.41	697.45	1515.00	0.66%	995.65	51.16%	4.61%	8.24%
APOLLO	7502.00	1.00	0.01%	4.21	315.15	8099.50	7.38%	6001.00	25.01%	-2.34%	1.07%
ASIAN	2832.00	174.80	6.58%	28.59	783.86	2838.70	0.24%	2124.75	33.29%	13.55%	-4.05%
AXIS	1216.50	-6.00	-0.49%	67.82	831.00	1276.10	4.67%	933.50	30.32%	3.57%	5.30%
BAJAJ-AUTO	8845.00	-50.00	-0.56%	4.40	389.60	10032.90	11.84%	7089.35	24.76%	-0.58%	-10.25%
BAJAJFINSV	2039.00	49.60	2.49%	23.96	483.72	2195.00	7.11%	1551.65	31.41%	-0.74%	14.35%
BAJFINANCE	1011.00	5.80	0.58%	111.31	1128.52	1102.50	8.30%	645.10	56.72%	-1.82%	-85.42%
BEL	423.40	-3.90	-0.91%	152.19	646.80	436.00	2.89%	240.25	76.23%	3.34%	43.51%
BHARTIARTL	2077.90	35.60	1.74%	82.10	1699.84	2135.60	2.70%	1511.00	37.52%	5.28%	30.09%
CIPLA	1521.90	7.00	0.46%	11.79	179.22	1673.00	9.03%	1335.00	14.00%	-3.00%	-4.88%
COALINDIA	386.30	3.50	0.91%	43.25	166.83	427.45	9.63%	349.25	10.61%	-0.44%	-9.73%
DRREDDY	1230.40	18.90	1.56%	12.22	150.12	1405.90	12.48%	1020.00	20.63%	-4.18%	-5.62%
EICHERMOT	6879.00	6.00	0.09%	3.01	206.71	7122.50	3.42%	4536.05	51.65%	-1.32%	43.63%
ETERNAL	308.55	2.75	0.90%	437.73	1357.76	368.45	16.26%	194.80	58.39%	-12.20%	#VALUE!
GRASIM	2758.30	-17.50	-0.63%	5.31	147.64	2977.80	7.37%	2276.95	21.14%	-1.25%	9.08%
HCLTECH	1593.00	23.00	1.46%	23.32	371.02	2012.20	20.83%	1302.75	22.28%	4.98%	-14.56%
HDFCBANK	990.25	-1.45	-0.15%	131.36	1303.29	1020.50	2.96%	812.15	21.93%	1.10%	-43.48%
HDFCLIFE	782.90	19.00	2.49%	39.96	311.11	820.75	4.61%	584.30	33.99%	2.22%	7.82%
HINDALCO	793.95	0.20	0.03%	75.89	607.26	864.00	8.11%	546.45	45.29%	2.56%	22.03%
HINDUNILVR	2426.00	-1.50	-0.06%	16.81	407.37	2750.00	11.78%	2136.00	13.58%	-4.01%	-3.20%
ICICIBANK	1358.50	0.20	0.01%	97.36	1325.88	1500.00	9.43%	1186.00	14.54%	-1.59%	7.90%
INDIGO	5790.00	7.50	0.13%	6.96	403.32	6232.50	7.10%	3830.00	51.17%	0.83%	44.46%
INFY	1550.60	20.30	1.33%	146.31	2269.55	2006.45	22.72%	1307.00	18.64%	1.02%	-16.37%
ITC	407.40	0.55	0.14%	79.87	324.91	491.00	17.03%	390.15	4.42%	1.01%	-14.89%
JIOFIN	309.90	5.00	1.64%	120.26	371.19	347.35	10.78%	198.65	56.00%	-1.05%	-3.53%
JSWSTEEL	1184.70	-6.80	-0.57%	9.76	115.66	1223.90	3.20%	880.00	34.63%	2.03%	19.58%
KOTAKBANK	2085.90	-1.00	-0.05%	18.07	377.00	2301.90	9.38%	1679.05	24.23%	-2.94%	19.54%
LT	3954.90	-0.10	#VALUE!	9.81	387.87	4062.60	2.65%	2965.30	33.37%	4.52%	8.05%
M&M	3740.30	-8.80	-0.23%	19.85	746.17	3781.00	1.08%	2425.00	54.24%	8.52%	26.02%
MARUTI	15654.00	9.00	0.06%	2.44	382.30	16660.00	6.04%	10725.00	45.96%	-3.81%	38.41%
MAXHEALTH	1109.90	14.50	1.32%	44.64	489.25	1314.30	15.55%	936.25	18.55%	-5.27%	1.50%
NESTLEIND	1278.90	10.80	0.85%	8.25	105.29	1311.60	2.49%	1055.00	21.22%	5.72%	-44.76%
NTPC	326.90	0.25	0.08%	68.50	224.04	400.90	18.46%	292.80	11.65%	-3.84%	-17.85%
ONGC	253.90	4.45	1.78%	119.17	302.38	273.50	7.17%	205.00	23.85%	1.26%	-4.99%
POWERGRID	266.85	-0.80	-0.30%	164.43	441.52	345.40	22.74%	247.30	7.91%	-7.44%	-15.37%
RELIANCE	1511.80	18.40	1.23%	123.84	1876.18	1551.00	2.53%	1114.85	35.61%	8.08%	16.33%
SBILIFE	1997.00	-0.30	-0.02%	10.07	200.92	2017.90	1.04%	1372.55	45.50%	10.32%	27.22%
SBIN	953.70	0.40	0.04%	70.43	674.80	971.40	1.82%	680.00	40.25%	8.25%	13.06%
SHRIRAMFIN	822.10	-10.20	-1.23%	42.39	350.43	838.65	1.97%	493.35	66.64%	25.15%	-72.33%
SUNPHARMA	1733.00	16.90	0.98%	18.33	317.35	1910.00	9.27%	1548.00	11.95%	2.71%	-5.17%
TATACONSUM	1162.00	5.80	0.50%	11.69	135.69	1202.80	3.39%	882.90	31.61%	2.64%	16.44%
TMPV	402.30	-5.30	-1.30%	129.38	523.22	831.45	51.61%	376.30	6.91%	#VALUE!	#VALUE!
TATASTEEL	178.70	-2.34	-1.29%	190.34	341.77	186.94	4.41%	122.62	45.73%	4.13%	22.68%
TCS	3125.10	78.10	2.56%	44.60	1389.13	4494.90	30.47%	2866.60	9.02%	0.62%	-26.53%
TECHM	1457.00	49.00	3.48%	29.59	427.18	1807.70	19.40%	1209.40	20.47%	-3.38%	-16.26%
TITAN	3834.00	21.60	0.57%	8.05	310.32	3877.00	1.11%	2925.00	31.08%	7.94%	19.65%
TRENT	4371.00	55.20	1.28%	9.38	408.50	7493.05	41.67%	4262.60	2.54%	-8.00%	-31.48%
ULTRACEMCO	11920.00	95.00	0.80%	1.85	219.38	13097.00	8.99%	10047.85	18.63%	-3.71%	7.08%
WIPRO	245.39	3.70	1.53%	131.52	322.24	324.60	24.40%	228.00	7.63%	-2.82%	-57.52%

## Disclaimer / Disclosures

### ANALYST CERTIFICATION

I, Mrs. Vaishali Parekh B.com, Research Analyst, author and the name subscribed to this report, hereby certify that all of the views expressed in this research report accurately reflect our views about the subject issuer(s) or securities. We also certify that no part of our compensation was, is, or will be directly or indirectly related to the specific recommendation(s) or view(s) in this report.

Terms & conditions and other disclosures:

Prabhudas Lilladher Pvt. Ltd, Mumbai, India (hereinafter referred to as "PL") is engaged in the business of Stock Broking, Portfolio Manager, Depository Participant and distribution for third party financial products. PL is a subsidiary of Prabhudas Lilladher Advisory Services Pvt Ltd. which has its various subsidiaries engaged in business of commodity broking, investment banking, financial services (margin funding) and distribution of third party financial/other products, details in respect of which are available at [www.plindia.com](http://www.plindia.com)

This document has been prepared by the Research Division of PL and is meant for use by the recipient only as information and is not for circulation. This document is not to be reported or copied or made available to others without prior permission of PL. It should not be considered or taken as an offer to sell or a solicitation to buy or sell any security.

The information contained in this report has been obtained from sources that are considered to be reliable. However, PL has not independently verified the accuracy or completeness of the same. Neither PL nor any of its affiliates, its directors or its employees accepts any responsibility of whatsoever nature for the information, statements and opinion given, made available or expressed herein or for any omission therein.

Recipients of this report should be aware that past performance is not necessarily a guide to future performance and value of investments can go down as well. The suitability or otherwise of any investments will depend upon the recipient's particular circumstances and, in case of doubt, advice should be sought from an independent expert/advisor.

Either PL or its affiliates or its directors or its employees or its representatives or its clients or their relatives may have position(s), make market, act as principal or engage in transactions of securities of companies referred to in this report and they may have used the research material prior to publication.

PL may from time to time solicit or perform investment banking or other services for any company mentioned in this document.

PL is registered as Research Analyst under Securities and Exchange Board of India (Research Analysts) Regulations, 2014 PL submits that no material disciplinary action has been taken on us by any Regulatory Authority impacting Equity Research Analysis activities.

PL or its research analysts or its associates or his relatives do not have any financial interest in the subject company.

PL or its research analysts or its associates or his relatives do not have actual/beneficial ownership of one per cent or more securities of the subject company at the end of the month immediately preceding the date of publication of the research report.

PL or its research analysts or its associates or his relatives do not have any material conflict of interest at the time of publication of the research report.

PL or its associates might have received compensation from the subject company in the past twelve months.

PL or its associates might have managed or co-managed public offering of securities for the subject company in the past twelve months or mandated by the subject company for any other assignment in the past twelve months.

PL or its associates might have received any compensation for investment banking or merchant banking or brokerage services from the subject company in the past twelve months.

PL or its associates might have received any compensation for products or services other than investment banking or merchant banking or brokerage services from the subject company in the past twelve months PL or its associates might have received any compensation or other benefits from the subject company or third party in connection with the research report.

PL encourages independence in research report preparation and strives to minimize conflict in preparation of research report. PL or its analysts did not receive any compensation or other benefits from the subject Company or third party in connection with the preparation of the research report. PL or its Research Analysts do not have any material conflict of interest at the time of publication of this report.

It is confirmed that Mrs.Vaishali Parekh B.com, Research Analyst of this report has not received any compensation from the companies mentioned in the report in the preceding twelve months compensation of our Research Analysts is not based on any specific merchant banking, investment banking or brokerage service transactions.

The Research analysts for this report certifies that all of the views expressed in this report accurately reflect his or her personal views about the subject company or companies and its or their securities, and no part of his or her compensation was, is or will be, directly or indirectly related to specific recommendations or views expressed in this report.

The research analysts for this report has not served as an officer, director or employee of the subject company PL or its research analysts have not engaged in market making activity for the subject company

Our sales people, traders, and other professionals or affiliates may provide oral or written market commentary or trading strategies to our clients that reflect opinions that are contrary to the opinions expressed herein, and our proprietary trading and investing businesses may make investment decisions that are inconsistent with the recommendations expressed herein. In reviewing these materials, you should be aware that any or all of the foregoing, among other things, may give rise to real or potential conflicts of interest.

PL and its associates, their directors and employees may (a) from time to time, have a long or short position in, and buy or sell the securities of the subject company or (b) be engaged in any other transaction involving such securities and earn brokerage or other compensation or act as a market maker in the financial instruments of the subject company or act as an advisor or lender/borrower to the subject company or may have any other potential conflict of interests with respect to any recommendation and other related information and opinions.