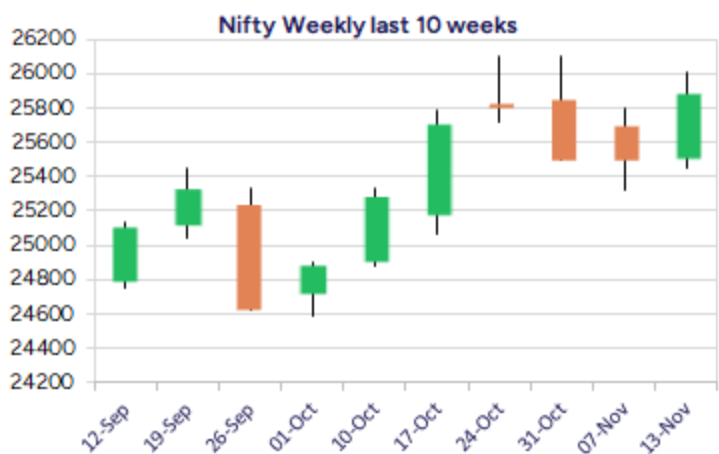
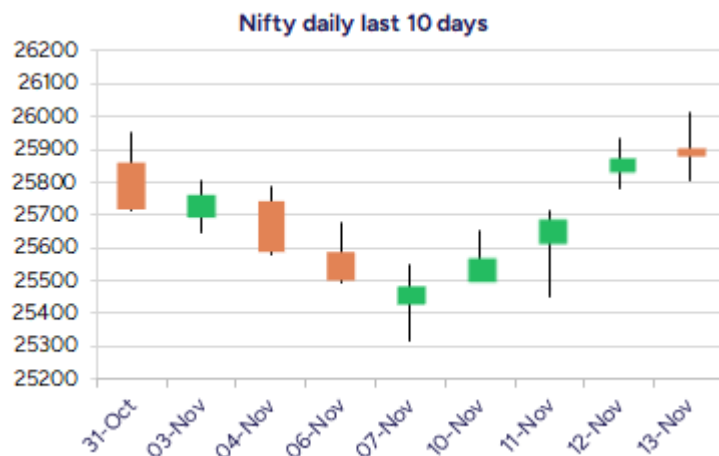


Date: 14<sup>th</sup> November 2025

\* Sensex 84478.67 + 12.16

\* Nifty 25879.15 + 3.35

\* Bank Nifty 58381.95 + 107.30



\*Blue candle → Close rate > Open rate \* Red candle → Close rate < Open rate

## Market Preview

### Nifty witnesses volatility; resists near 26000 zone

Nifty surged ahead in the first half to scale the 26000 zone but the later half saw profit booking to drag the index to close on a flat note with bias still maintained with a positive approach. BankNifty amid volatility once again failed to cross above the 58500 zone and is gripped between the tight range of 57500 and 58500 levels with bias maintained intact. The market breadth was slightly on the weaker side with the advance decline indicating a ratio of 2:3 at close.

## Market Forecast

### Nifty daily range 25700 - 26100

Nifty witnessed a volatile session scaling the 26000 zone during the intraday session but fizzled out in the second half to wipe off the gains and closed on a flat note on the back of anxious approach ahead of the election outcome. The index has witnessed a decent pullback from the 25350 zone to improve the bias and further, a decisive move past the 26100 is necessary to carry on with the positive move further ahead, having the near-term support zone at 25700 level which needs to be sustained to maintain the overall bias intact.

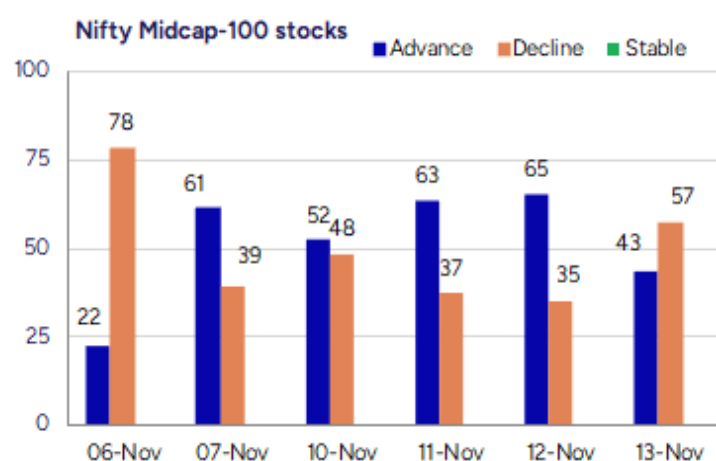
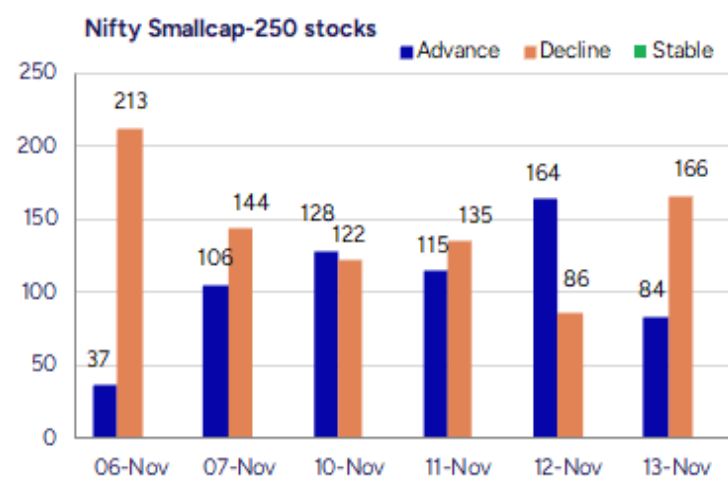
BankNifty witnessed another attempt to move past the tough hurdle of 58500 zone but failed once again with profit booking seen and closing near the 58400 zone with bias still maintained with a positive approach as of now. As mentioned earlier, the index desperately would need to move past the rangebound barrier of 58500 level to trigger for a breakout with the important and crucial support positioned near the 50EMA at 56800 level which needs to be sustained.

The support for the day is seen at 25700 levels, while the resistance is seen at 26100 levels. BankNifty would have the daily range of 57800-59000 levels.

Indices	Period	Closing	% Chng	Trend	Reversal	2 Sup	1 Sup	Pivot	1 Res	2 Res
Nifty	Daily	25879.15	0.01%	3	25715.60	25697	25788	25899	25990	26102
	Weekly	25492.30	-0.89%	-1	25502.90	25054	25273	25538	25757	26021
	Monthly	25722.10	4.51%	1	25438.50	23979	24851	25477	26349	26976
Bank Nifty	Daily	58381.95	0.18%	3	58179.20	57886	58134	58375	58623	58864
	Weekly	57876.80	0.17%	6	57268.10	56673	57275	57760	58362	58846
	Monthly	57776.35	5.75%	1	57492.70	52984	55380	56979	59375	60974
Sensex	Daily	84478.67	0.01%	3	83951.40	83884	84181	84550	84848	85217
	Weekly	83216.28	-0.86%	-1	83195.40	81884	82550	83337	84003	84791
	Monthly	83938.71	4.57%	1	83147.90	77999	80969	83130	86099	88260

**Gainers - Losers ( Nifty 500 Stocks )**

Gainers				Losers			
Company Name	Last Price	% Gain	Volume	Company Name	Last Price	% Loss	Volume
S J Logistics	398.45	20	316250	S A Tech Softwa	42.4	-20	309000
Precision Wires	270.99	17.33	19156219	Presstonic	68.85	-14.89	87200
Vindhya Telelin	1559	13.75	579498	Vdeal System	173.75	-13.13	49800
Salzer Electro	780.3	13.26	1177860	Hariom Pipe	371.75	-11.23	905769
Indo Tech Trans	1824.9	13.07	171569	Fischer Medical	64.73	-11	3512670
Safe Enterprise	268.9	12.42	903500	Dynemic Product	273.3	-9.73	149509
Gretex Corporat	354.28	12.11	1281782	Sahasra Electro	318.15	-9.1	105200



## Nifty Daily chart with RSI indicator



## BankNifty Daily chart with RSI indicator



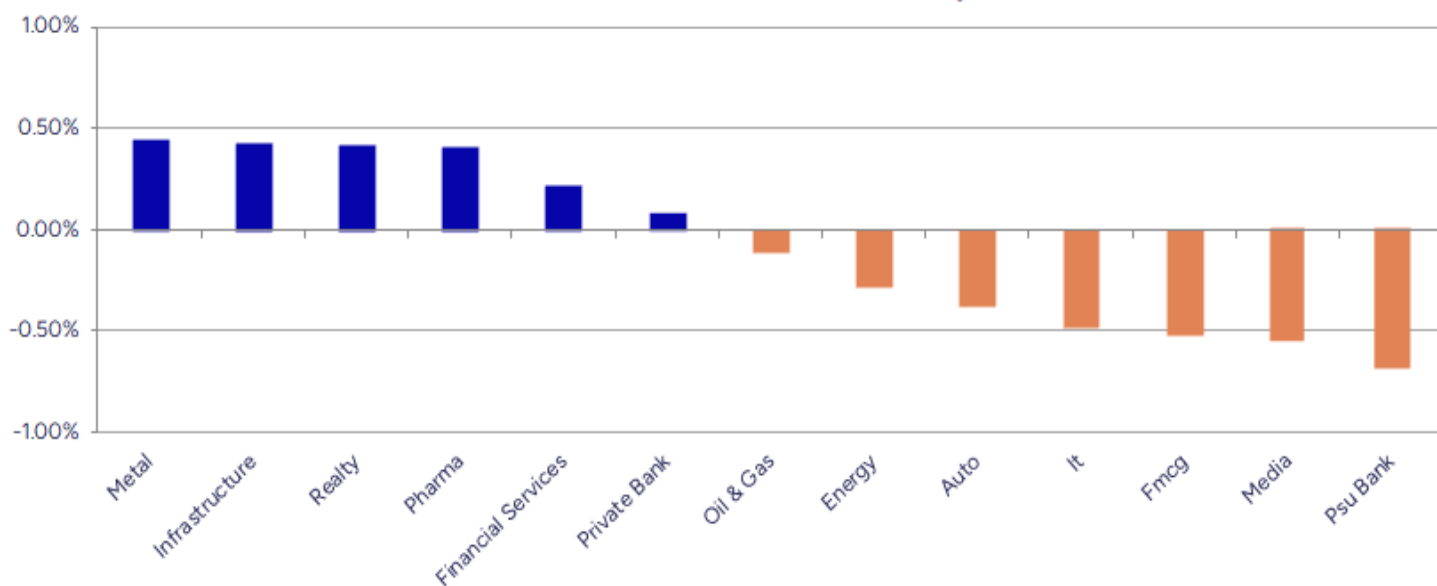
Breakouts - Cross above 200 DMA			
Company Name	LCP	Change %	200 DMA
Jet Freight Log	14.5	7.81	13.45
WOL 3D India	142.35	7.13	132.87
Infibeam Avenue	19.2	5.32	18.23
Maitreya Medica	288.65	4.99	274.94
Hemisphere	146.2	4.89	139.39
Phantom Digital	250	3.89	240.63
Vindhya Telelin	1559	3.60	1504.79
Goldiam Inter	390.05	3.31	377.56
Arvind	344.2	3.00	334.17
Ventive Hospita	749.1	2.66	729.71
Control Print	731.65	2.20	715.91
Setco Auto	17.9	1.88	17.57
Madhya Pradesh	37.65	1.59	37.06
Kansai Nerolac	249.34	1.55	245.54
Karnika Industr	139	1.42	137.06
Transport Corp	1134.3	1.21	1120.75
Raj Rayon Ind	25.25	1.08	24.98
Brace Port Logi	87.2	1.07	86.28

\* Stocks crossing above its Simple Moving Average (200DMA)

Breakdown - Cross below 200 DMA			
Company Name	LCP	Change %	200 DMA
The Western Ind	155.9	-6.73	167.15
Albert David	825.15	-4.74	866.18
Palred Tech	52.06	-4.56	54.55
Petro Carbon	172.05	-4.02	179.26
Time Techno	200.18	-3.72	207.92
Hb Stockhol	83.05	-2.71	85.36
SEL Mgf Company	32.65	-2.48	33.48
A2Z Infra Eng	17.41	-2.41	17.84
Sandesh	1164.8	-2.41	1193.59
AFFLE 3I	1733.7	-2.11	1771.1
Gloster	628.65	-2.00	641.47
Sportking India	100.28	-1.82	102.14
Shanthala	33.05	-1.72	33.63
Gujarat Fluoro	3616.1	-1.68	3678
Hind Composites	454.75	-1.66	462.41
Eris Life	1518.1	-1.64	1543.47
Archidply Ind	97	-1.45	98.43
Shivalik Bimeta	486.7	-1.42	493.73

\* Stocks crossing below its Simple Moving Average (200DMA)

Sectoral Indices - Gainers Losers for the day



Stocks witnessing a volume surge as compared to their 5 day average volume

Watch out for the stocks that have seen a huge spurt in its share price over the last three days

Volume Shockers - NSE					
Company name	LCP	% Chg	Volume	Avg Vol *	% Chg
Jupiter Life	1497.8	0.73	2341747	11977	19452
Khandwala Sec	23.93	10.02	305820	1959	15511
Vindhya Telelin	1559	13.75	579498	6363	9007
Data Patterns	2991.7	7.14	5965559	106334	5510
R M Drip & Spri	78.58	-0.34	508497	9800	5089
Atal	24.9	0.2	4597404	100889	4457
Krishival Foods	486.4	1.25	50787	1200	4132
Universal Cable	778.55	7.37	1417292	42328	3248
RamkrishnaForge	556.75	3.4	10355241	310087	3239
TVS Electronics	662.95	11.95	4651061	141257	3193
Aether Ind.	773.3	3.99	2243102	73438	2954
Beta Drugs	1675.25	-0.07	189210	6867	2655
Asian Hotel (E)	140.75	-1.34	87603	3437	2449
KCK Industries	28	4.87	337500	13600	2382
Sunrest	49.65	5.19	52800	2240	2257
Cohance Life	629.9	-8.7	5275519	249599	2014
BEW Engineering	135	-4.26	22000	1125	1856
Dolat Algotech	77.5	-0.3	2704160	148207	1725
Lincoln Pharma	503.45	-4.97	193834	11582	1574
Sandhar Technol	553.1	2.21	2531552	163697	1446

\* the Average Volume of last 5 days

Price Shockers - NSE				
Company name	LCP	Prv Close	% Chg	Volume
Safe Enterprise	268.9	194.65	38.15	903500
Venus Remedies	563.35	468.95	20.13	213571
Precision Wires	270.99	227.85	18.93	19156219
Pearl Global In	1673.5	1410.9	18.61	4405810
Parag Milk Food	368.2	313.05	17.62	6841083
Apex Frozen	286.16	243.35	17.59	1535655
Gokul Agro	200.42	172.73	16.03	5991606
Vindhya Telelin	1559	1344.4	15.96	579498
Sri Adhikari	934.4	807.25	15.75	8751
Atlantaa	49.87	43.09	15.73	72726
NRB Industrial	31.71	27.41	15.69	89013
Drone Desti	87.95	76.05	15.65	9500
ANB Metal Cast	369	319.7	15.42	52000
Indo Count	310.7	269.3	15.37	1512621
Accord Synergy	22.85	19.85	15.11	4000
TVS Electronics	662.95	577.2	14.86	4651061
Indo Tech Trans	1824.9	1589.5	14.81	171569
Rico Auto	98.07	85.92	14.14	6020331
Salzer Electro	780.3	685	13.91	1177860
Kirloskar Oil	1086.1	954.5	13.79	1327595

\* the % price rise of the last 3 days



Nifty 50 stocks - Summary Details											
Symbol	LTP	Chng	% Chng	Volume (lacs)	Turnover (crs.)	52w High	Diff with 52w H	52w Low	Diff with 52w L	365 days % chng	30 days % chng
NIFTY 50	25879.15	3.35	0.01%	3851.54	30144.71	26104.20	0.86%	21743.65	19.02%	2.34%	7.18%
ADANIENT	2488.00	3.50	0.14%	27.06	675.28	2930.45	15.10%	2025.00	22.86%	-2.60%	-14.44%
ADANIPTS	1496.70	-10.20	-0.68%	23.05	346.32	1515.00	1.21%	995.65	50.32%	6.92%	11.80%
APOLLOHOSP	7444.00	-54.00	-0.72%	4.49	334.79	8099.50	8.09%	6001.00	24.05%	-2.38%	4.79%
ASIANPAINT	2874.30	104.50	3.77%	59.34	1703.93	2897.10	0.79%	2124.75	35.28%	18.36%	8.91%
AXISBANK	1228.30	6.70	0.55%	33.45	410.18	1276.10	3.75%	933.50	31.58%	3.49%	4.32%
BAJAJ-AUTO	8863.00	-5.00	-0.06%	2.76	244.79	9999.00	11.36%	7089.35	25.02%	-0.88%	-10.60%
BAJAJFINSV	2057.00	21.50	1.06%	18.40	378.55	2195.00	6.29%	1551.65	32.57%	1.56%	18.52%
BAJFINANCE	1007.00	-6.20	-0.61%	85.04	859.59	1102.50	8.66%	645.10	56.10%	-1.04%	-85.05%
BEL	420.20	-4.55	-1.07%	90.88	383.10	436.00	3.62%	240.25	74.90%	2.72%	41.70%
BHARTIARTL	2093.00	19.20	0.93%	59.59	1247.51	2135.60	1.99%	1511.00	38.52%	6.90%	32.89%
CIPLA	1528.10	8.80	0.58%	12.17	185.65	1673.00	8.66%	1335.00	14.46%	-2.72%	-2.16%
COALINDIA	383.30	-3.20	-0.83%	34.81	134.10	427.45	10.33%	349.25	9.75%	0.52%	-8.31%
DRREDDY	1234.40	4.80	0.39%	14.27	176.20	1405.90	12.20%	1020.00	21.02%	-2.75%	-4.53%
EICHERMOT	6796.50	-82.50	-1.20%	8.42	578.76	7122.50	4.58%	4536.05	49.83%	-1.23%	43.51%
ETERNAL	297.40	-11.40	-3.69%	635.85	1914.92	368.45	19.28%	194.80	52.67%	-11.34%	#VALUE!
GRASIM	2782.00	14.60	0.53%	6.87	190.81	2977.80	6.58%	2276.95	22.18%	-1.55%	9.84%
HCLTECH	1597.30	3.30	0.21%	19.44	310.36	2012.20	20.62%	1302.75	22.61%	6.59%	-14.64%
HDFCBANK	985.75	-3.75	-0.38%	141.25	1393.17	1020.50	3.41%	812.15	21.38%	0.88%	-43.98%
HDFCLIFE	782.95	-0.15	-0.02%	20.68	161.81	820.75	4.61%	584.30	34.00%	4.79%	11.02%
HINDALCO	814.00	19.60	2.47%	58.54	473.74	864.00	5.79%	546.45	48.96%	2.64%	21.22%
HINDUNILVR	2409.90	-14.60	-0.60%	12.56	303.53	2750.00	12.37%	2136.00	12.82%	-4.13%	-2.67%
ICICIBANK	1385.40	26.50	1.95%	182.97	2531.25	1500.00	7.64%	1186.00	16.81%	-1.55%	7.06%
INDIGO	5911.00	115.50	1.99%	12.51	738.32	6232.50	5.16%	3830.00	54.33%	1.05%	44.47%
INFY	1542.00	-9.70	-0.63%	196.55	3039.01	2006.45	23.15%	1307.00	17.98%	2.43%	-16.58%
ITC	406.50	-0.50	-0.12%	66.15	268.77	491.00	17.21%	390.15	4.19%	1.04%	-14.67%
JIOFIN	311.00	1.50	0.48%	157.61	493.77	347.35	10.46%	198.65	56.56%	0.44%	-0.80%
JSWSTEEL	1182.50	0.70	0.06%	14.27	169.70	1223.90	3.38%	880.00	34.38%	1.20%	20.72%
KOTAKBANK	2080.00	-4.50	-0.22%	21.42	444.74	2301.90	9.64%	1679.05	23.88%	-3.05%	19.52%
LT	4005.00	50.40	1.27%	18.35	732.81	4062.60	1.42%	2965.30	35.06%	4.51%	8.98%
M&M	3699.40	-54.90	-1.46%	15.99	595.33	3781.00	2.16%	2425.00	52.55%	8.67%	28.11%
MARUTI	15725.00	29.00	0.18%	2.51	394.73	16660.00	5.61%	10725.00	46.62%	-3.50%	37.69%
MAXHEALTH	1098.70	-4.90	-0.44%	14.68	161.77	1314.30	16.40%	936.25	17.35%	-4.57%	7.67%
NESTLEIND	1274.50	-3.70	-0.29%	6.91	88.55	1311.60	2.83%	1055.00	20.81%	6.56%	-43.92%
NTPC	327.50	0.35	0.11%	72.76	238.67	394.80	17.05%	292.80	11.85%	-3.69%	-16.66%
ONGC	251.55	-2.30	-0.91%	130.58	326.64	273.50	8.03%	205.00	22.71%	3.05%	-1.19%
POWERGRID	270.40	3.30	1.24%	125.73	338.22	345.40	21.71%	247.30	9.34%	-7.63%	-19.01%
RELIANCE	1512.10	0.60	0.04%	71.96	1089.79	1551.00	2.51%	1114.85	35.63%	9.39%	18.76%
SBILIFE	1985.70	-11.00	-0.55%	6.71	133.36	2017.90	1.60%	1372.55	44.67%	10.29%	27.50%
SBIN	954.90	-2.25	-0.24%	88.94	852.01	971.40	1.70%	680.00	40.43%	8.69%	12.92%
SHRIRAMFIN	813.50	-9.00	-1.09%	60.49	492.90	838.65	3.00%	493.35	64.89%	23.67%	-72.58%
SUNPHARMA	1737.90	5.80	0.33%	17.28	300.39	1910.00	9.01%	1548.00	12.27%	3.66%	-3.48%
TATACONSUM	1150.00	-12.00	-1.03%	16.03	185.56	1202.80	4.39%	882.90	30.25%	3.15%	19.06%
TMPV	398.00	-4.15	-1.03%	131.66	525.96	820.35	51.48%	376.30	5.77%	#VALUE!	#VALUE!
TATASTEEL	176.55	-2.06	-1.15%	820.77	1472.06	186.94	5.56%	122.62	43.98%	2.73%	23.17%
TCS	3104.80	-27.00	-0.86%	17.40	541.75	4494.90	30.93%	2866.60	8.31%	3.42%	-25.41%
TECHM	1453.00	-3.10	-0.21%	11.78	170.91	1807.70	19.62%	1209.40	20.14%	-0.08%	-14.56%
TITAN	3839.30	-11.80	-0.31%	6.69	256.70	3877.00	0.97%	2925.00	31.26%	9.04%	20.10%
TRENT	4342.00	-33.80	-0.77%	9.27	403.76	7493.05	42.05%	4262.60	1.86%	-6.72%	-32.48%
ULTRACEMCO	11931.00	10.00	0.08%	1.74	208.59	13097.00	8.90%	10047.85	18.74%	-2.93%	8.66%
WIPRO	245.34	0.12	0.05%	62.11	152.40	324.60	24.42%	228.00	7.61%	-1.40%	-57.24%

## Disclaimer / Disclosures

### ANALYST CERTIFICATION

I, Mrs. Vaishali Parekh B.com, Research Analyst, author and the name subscribed to this report, hereby certify that all of the views expressed in this research report accurately reflect our views about the subject issuer(s) or securities. We also certify that no part of our compensation was, is, or will be directly or indirectly related to the specific recommendation(s) or view(s) in this report.

Terms & conditions and other disclosures:

Prabhudas Lilladher Pvt. Ltd, Mumbai, India (hereinafter referred to as "PL") is engaged in the business of Stock Broking, Portfolio Manager, Depository Participant and distribution for third party financial products. PL is a subsidiary of Prabhudas Lilladher Advisory Services Pvt Ltd. which has its various subsidiaries engaged in business of commodity broking, investment banking, financial services (margin funding) and distribution of third party financial/other products, details in respect of which are available at [www.plindia.com](http://www.plindia.com)

This document has been prepared by the Research Division of PL and is meant for use by the recipient only as information and is not for circulation. This document is not to be reported or copied or made available to others without prior permission of PL. It should not be considered or taken as an offer to sell or a solicitation to buy or sell any security.

The information contained in this report has been obtained from sources that are considered to be reliable. However, PL has not independently verified the accuracy or completeness of the same. Neither PL nor any of its affiliates, its directors or its employees accepts any responsibility of whatsoever nature for the information, statements and opinion given, made available or expressed herein or for any omission therein.

Recipients of this report should be aware that past performance is not necessarily a guide to future performance and value of investments can go down as well. The suitability or otherwise of any investments will depend upon the recipient's particular circumstances and, in case of doubt, advice should be sought from an independent expert/advisor.

Either PL or its affiliates or its directors or its employees or its representatives or its clients or their relatives may have position(s), make market, act as principal or engage in transactions of securities of companies referred to in this report and they may have used the research material prior to publication.

PL may from time to time solicit or perform investment banking or other services for any company mentioned in this document.

PL is registered as Research Analyst under Securities and Exchange Board of India (Research Analysts) Regulations, 2014 PL submits that no material disciplinary action has been taken on us by any Regulatory Authority impacting Equity Research Analysis activities.

PL or its research analysts or its associates or his relatives do not have any financial interest in the subject company.

PL or its research analysts or its associates or his relatives do not have actual/beneficial ownership of one per cent or more securities of the subject company at the end of the month immediately preceding the date of publication of the research report.

PL or its research analysts or its associates or his relatives do not have any material conflict of interest at the time of publication of the research report.

PL or its associates might have received compensation from the subject company in the past twelve months.

PL or its associates might have managed or co-managed public offering of securities for the subject company in the past twelve months or mandated by the subject company for any other assignment in the past twelve months.

PL or its associates might have received any compensation for investment banking or merchant banking or brokerage services from the subject company in the past twelve months.

PL or its associates might have received any compensation for products or services other than investment banking or merchant banking or brokerage services from the subject company in the past twelve months PL or its associates might have received any compensation or other benefits from the subject company or third party in connection with the research report.

PL encourages independence in research report preparation and strives to minimize conflict in preparation of research report. PL or its analysts did not receive any compensation or other benefits from the subject Company or third party in connection with the preparation of the research report. PL or its Research Analysts do not have any material conflict of interest at the time of publication of this report.

It is confirmed that Mrs.Vaishali Parekh B.com, Research Analyst of this report has not received any compensation from the companies mentioned in the report in the preceding twelve months compensation of our Research Analysts is not based on any specific merchant banking, investment banking or brokerage service transactions.

The Research analysts for this report certifies that all of the views expressed in this report accurately reflect his or her personal views about the subject company or companies and its or their securities, and no part of his or her compensation was, is or will be, directly or indirectly related to specific recommendations or views expressed in this report.

The research analysts for this report has not served as an officer, director or employee of the subject company PL or its research analysts have not engaged in market making activity for the subject company

Our sales people, traders, and other professionals or affiliates may provide oral or written market commentary or trading strategies to our clients that reflect opinions that are contrary to the opinions expressed herein, and our proprietary trading and investing businesses may make investment decisions that are inconsistent with the recommendations expressed herein. In reviewing these materials, you should be aware that any or all of the foregoing, among other things, may give rise to real or potential conflicts of interest.

PL and its associates, their directors and employees may (a) from time to time, have a long or short position in, and buy or sell the securities of the subject company or (b) be engaged in any other transaction involving such securities and earn brokerage or other compensation or act as a market maker in the financial instruments of the subject company or act as an advisor or lender/borrower to the subject company or may have any other potential conflict of interests with respect to any recommendation and other related information and opinions.