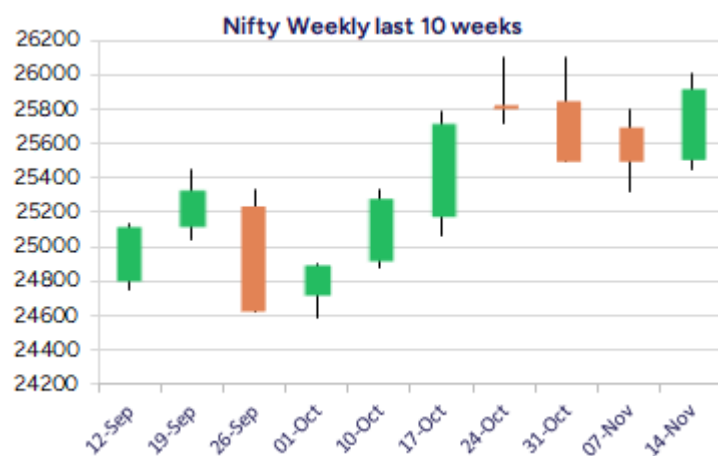
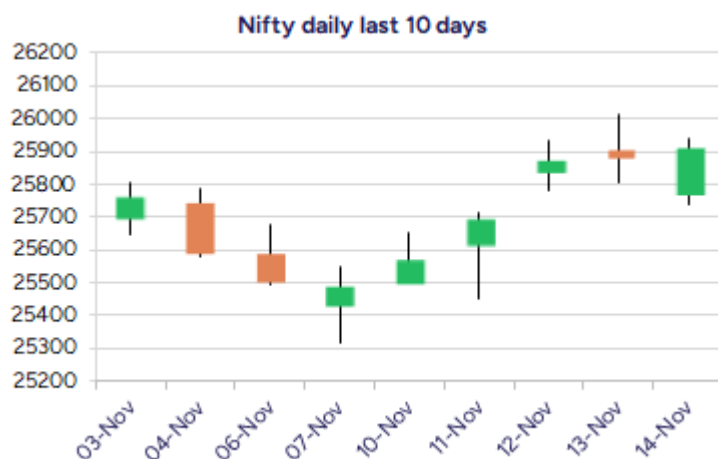


Date: 17<sup>th</sup> November 2025

\* Sensex 84562.78 + 84.11

\* Nifty 25910.05 + 30.90

\* Bank Nifty 58517.55 + 135.60



\*Blue candle → Close rate > Open rate \* Red candle → Close rate < Open rate

## Market Preview

### Nifty amid volatility ends above 25900 zone

Nifty was subjected to high fluctuations during the intraday session to end on a positive note with a significant surge in the last hour to end on a positive note above 25900 level. BankNifty amid volatility managed to close in the green but once again is gripped between the tight range desperately aiming for a breakout in the coming days. The market breadth was flat with the advance decline indicating a neutral ratio at close.

## Market Forecast

### Nifty daily range 25800 - 26100

Nifty once again witnessed a highly volatile session sustaining the support at 25750 zone and with a last hour spurt indicated, closed above the 25900 zone with bias overall maintained intact and can expect for further upward move in the coming days with targets of 26300 and 26700 levels with the undertone maintained strong. The index has sustained the fluctuations and with the near-term support zone positioned near the 25700 level, one can expect for further gains.

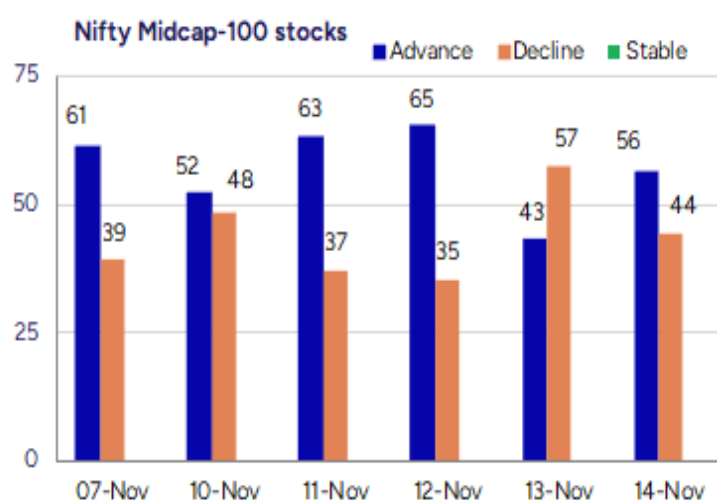
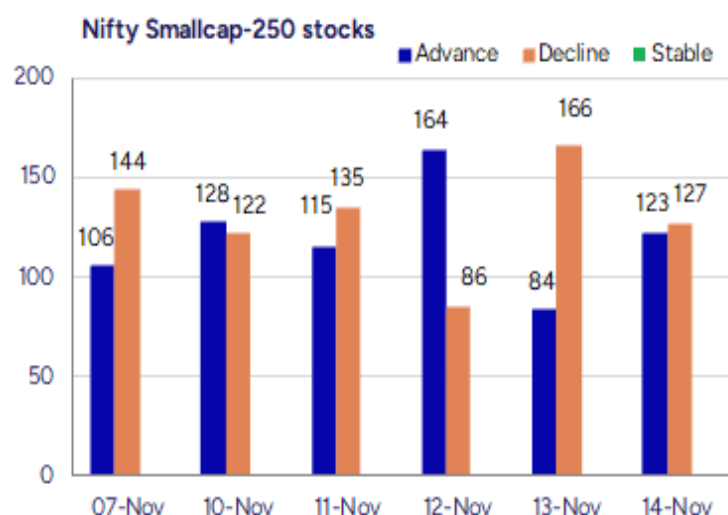
BankNifty once again maintaining the support near 58100 zone, witnessed fluctuations and in the final hours surges ahead to end near the 58500 level with bias remaining positive. The index overall continue to remain rangebound and as mentioned earlier, would desperately need to breach above the tough barrier of 58500 level to trigger for a breakout with the important and crucial support positioned near the 50EMA at 56800 level which needs to be sustained.

The support for the day is seen at 25800 levels, while the resistance is seen at 26100 levels. BankNifty would have the daily range of 58000-59000 levels.

Indices	Period	Closing	% Chng	Trend	Reversal	2 Sup	1 Sup	Pivot	1 Res	2 Res
Nifty	Daily	25910.05	0.12%	4	25769.00	25664	25787	25864	25987	26063
	Weekly	25910.05	1.64%	1	25734.65	25233	25572	25790	26129	26348
	Monthly	25722.10	4.51%	1	25438.50	23979	24851	25477	26349	26976
Bank Nifty	Daily	58517.55	0.23%	4	58297.10	57846	58182	58386	58722	58926
	Weekly	58517.55	1.11%	7	57918.60	57221	57869	58243	58891	59264
	Monthly	57776.35	5.75%	1	57492.70	52984	55380	56979	59375	60974
Sensex	Daily	84562.78	0.10%	4	84129.55	83761	84162	84430	84831	85099
	Weekly	84562.78	1.62%	1	83947.85	82412	83487	84203	85279	85995
	Monthly	83938.71	4.57%	1	83147.90	77999	80969	83130	86099	88260

**Gainers - Losers ( Nifty 500 Stocks )**

Gainers				Losers			
Company Name	Last Price	% Gain	Volume	Company Name	Last Price	% Loss	Volume
Enfuse Solution	201.05	19.99	32400	ATC Energies	42.9	-12.63	343200
GE Power India	354.95	18.2	4291361	Shigan Quantum	58.3	-12.59	30000
DCG Cables	76.05	17.82	144000	Madhusudan Masa	113.4	-11.06	83000
Aarvi Encon	137.68	14.7	477591	Dhanlaxmi Crop	36.5	-10.98	268000
Ipca Labs	1479.6	13.64	4131703	Onyx Biotech	38.5	-10.36	10000
KRBL	429.35	13.26	17587104	Tolins Tyres	168.46	-10.08	929563
Paramatrix Tech	82.3	12.66	20400	Fischer Medical	58.75	-10	448658



## Nifty Daily chart with RSI indicator



## BankNifty Daily chart with RSI indicator



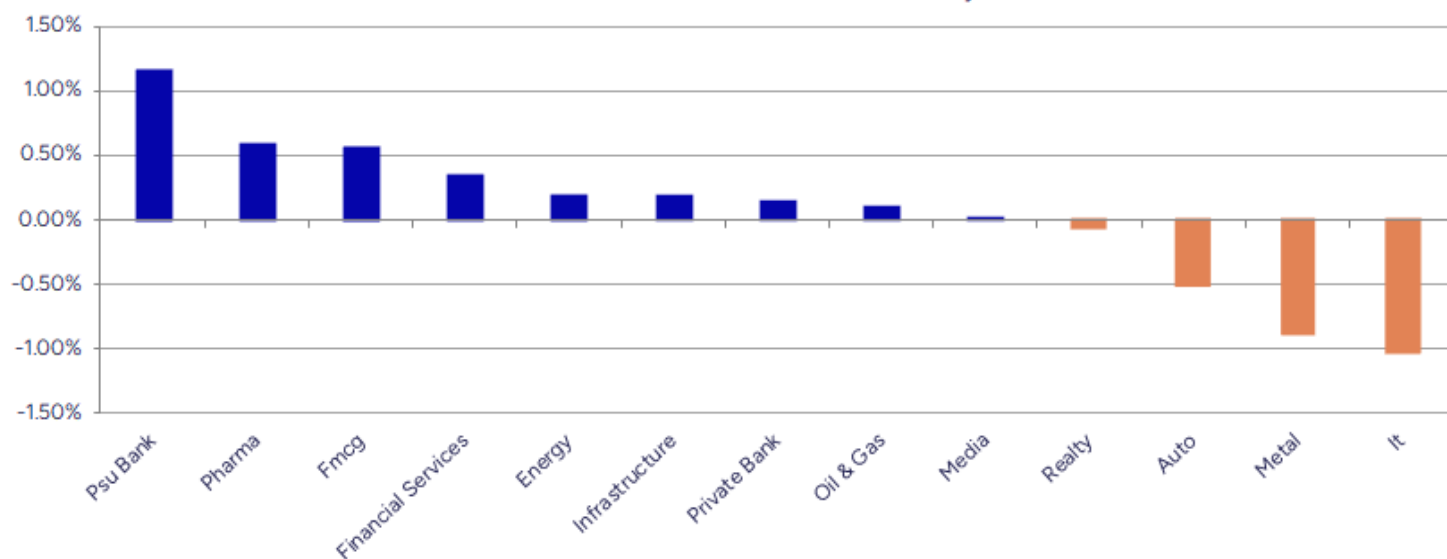
Breakouts - Cross above 200 DMA			
Company Name	LCP	Change %	200 DMA
IPHL	62.9	10.72	56.81
DCG Cables & WI	76.05	6.93	71.12
Aether Ind.	838.9	6.85	785.14
Ipca Labs	1479.6	6.40	1390.61
Bharat Dynamics	1613.8	5.96	1523.05
Viji Finance	2.97	4.58	2.84
Mahalaxmi Rub	230.35	3.96	221.58
Skipper	500.3	3.83	481.86
Shanthala	34.7	3.52	33.52
Emmbi Ind	111.06	3.50	107.3
Expleo Solution	1074.3	3.23	1040.66
CSL Fin	303.35	3.15	294.09
AksharChem	263.4	2.99	255.75
Transrail Light	653.1	2.50	637.14
Engineers India	200.25	2.45	195.46
DOMS Industries	2621.7	2.44	2559.14
Infomedia Press	7	2.04	6.86
Richa Info	78.75	1.99	77.21

\* Stocks crossing above its Simple Moving Average (200DMA)

Breakdown - Cross below 200 DMA			
Company Name	LCP	Change %	200 DMA
Wealth First Po	1051.8	-4.15	1097.31
Silkflex Poly	79.35	-3.92	82.59
DDEVPLASTIK	274.5	-3.84	285.47
Rajdarshan Ind	45	-2.93	46.36
SPL Industries	38.93	-2.89	40.09
Twamev Construc	31.66	-2.64	32.52
Rajgor Castor	23	-2.46	23.58
Sanofi Consumer	4831.9	-2.30	4945.54
ABSL AMC	733.95	-2.16	750.12
Laxmi Goldorna	273.15	-1.96	278.62
Dilip Buildcon	465.95	-1.87	474.84
Honda India PP	2526.4	-1.85	2574.15
Jupiter Life	1464.1	-1.82	1491.28
Shilpa	379.6	-1.71	386.22
Munjal Showa	128.75	-1.50	130.71
Usha Financial	41.6	-1.49	42.23
Shreeoswal Seed	14.3	-1.45	14.51
DSP Nifty IT	37.72	-1.41	38.26

\* Stocks crossing below its Simple Moving Average (200DMA)

Sectoral Indices - Gainers Losers for the day



Stocks witnessing a volume surge as compared to their 5 day average volume

Watch out for the stocks that have seen a huge spurt in its share price over the last three days

Volume Shockers - NSE					
Company name	LCP	% Chg	Volume	Avg Vol *	% Chg
Aarvi Encon	137.68	14.7	477591	4654	10162
Mahalaxmi Rub	230.35	12.21	190239	3280	5701
Take Solutions	28.83	4.99	8628463	149297	5679
Atal	24.68	-0.88	5260226	100889	5114
KRBL	429.35	13.26	17587104	382160	4502
Man Industries	426.55	10.73	8127766	177836	4470
Krishival Foods	476.85	-1.96	50785	1200	4132
GE Power India	354.95	18.2	4291361	106163	3942
Touchwood Enter	103	-0.12	157426	4675	3267
SRM Contractors	634.1	9.37	1267424	38037	3232
KCK Industries	29.3	4.64	450000	13600	3209
NCL Industries	206.2	4.32	1132218	37193	2944
Sagility	53.28	5.63	1112119035	4E+07	2677
Hindustan Media	71.02	4.29	3156401	131502	2300
Orient Press	82.04	-3.31	45779	1932	2270
Expleo Solution	1074.3	9.7	312017	13429	2223
Data Patterns	3100.7	3.24	2418278	106334	2174
Dollar Ind	366.1	5.13	985258	46950	1999
UTKARSHBNK	16.3	2.52	21054479	1045115	1915
Spandana Sphoor	275.95	9.14	2710219	145941	1757

\* the Average Volume of last 5 days

Price Shockers - NSE					
Company name	LCP	Prv Close	% Chg	Volume	
Safe Enterprise	301.1	212.05	41.99	849000	
Cupid	312.84	253.23	23.54	9522164	
GE Power India	354.95	290.1	22.35	4291361	
Universal Cable	860.5	717.45	19.94	1857019	
Pearl Global In	1688.1	1411.4	19.6	599470	
CSL Fin	303.35	257.25	17.92	134099	
Vindhya Telelin	1572.4	1337.8	17.54	117645	
Precision Wires	269.37	230.56	16.83	3132501	
Sri Adhikari	981.1	847.6	15.75	7236	
Indo Tech Trans	1849.6	1598.6	15.7	266394	
Kirloskar Oil	1092.05	945.4	15.51	1008020	
Madhya Pradesh	39.5	34.2	15.5	2000	
Accord Synergy	23.95	20.8	15.14	8000	
Rico Auto	98.81	86.1	14.76	1294155	
Transwind Infra	16.4	14.3	14.69	12000	
Aether Ind	838.9	732.6	14.51	4303052	
Intense Tech	136.7	119.4	14.49	64542	
Womancart	336.6	294.95	14.12	11200	
Aarvi Encon	137.68	120.83	13.95	477591	
KRBL	429.35	376.9	13.92	17587104	

\* the % price rise of the last 3 days



Nifty 50 stocks - Summary Details											
Symbol	LTP	Chng	% Chng	Volume (lacs)	Turnover (crs.)	52w High	Diff with 52w H	52w Low	Diff with 52w L	365 days % chng	30 days % chng
NIFTY 50	25910.05	30.90	0.12%	5189.43	33121.60	26104.20	0.74%	21743.65	19.16%	2.58%	8.36%
ADANIET	2524.10	35.90	1.44%	44.96	1135.07	2894.80	12.81%	2025.00	24.65%	-1.55%	-13.30%
ADANIPTS	1514.60	15.60	1.04%	23.46	354.71	1523.60	0.59%	995.65	52.12%	4.26%	13.05%
APOLLOHOSP	7419.00	-21.50	-0.29%	2.19	162.06	8099.50	8.40%	6001.00	23.63%	-3.00%	6.00%
ASIANPAINT	2902.00	22.60	0.78%	24.94	723.02	2909.90	0.27%	2124.75	36.58%	22.92%	16.35%
AXISBANK	1244.40	19.20	1.57%	51.98	643.76	1276.10	2.48%	933.50	33.30%	2.99%	5.79%
BAJAJ-AUTO	8845.00	-22.50	-0.25%	5.50	484.88	9710.00	8.91%	7089.35	24.76%	-2.19%	-8.38%
BAJAJFINSV	2064.90	8.70	0.42%	14.33	294.54	2195.00	5.93%	1551.65	33.08%	1.77%	21.54%
BAJFINANCE	1016.10	10.70	1.06%	43.81	443.97	1102.50	7.84%	645.10	57.51%	-3.02%	-84.85%
BEL	426.50	6.70	1.60%	147.20	624.83	436.00	2.18%	240.25	77.52%	2.54%	44.68%
BHARTIARTL	2096.80	5.00	0.24%	63.13	1319.39	2135.60	1.82%	1511.00	38.77%	7.00%	34.46%
CIPLA	1532.00	6.20	0.41%	8.11	124.06	1673.00	8.43%	1335.00	14.76%	-2.42%	0.04%
COALINDIA	386.75	3.55	0.93%	37.60	144.96	427.45	9.52%	349.25	10.74%	0.43%	-7.45%
DRREDDY	1246.90	12.00	0.97%	8.28	102.95	1405.90	11.31%	1020.00	22.25%	-2.18%	-2.29%
EICHERMOT	6699.50	-155.50	-2.27%	7.39	497.56	7122.50	5.94%	4536.05	47.69%	-0.82%	44.68%
ETERNAL	304.15	6.40	2.15%	373.79	1125.21	368.45	17.45%	194.80	56.13%	-14.53%	#VALUE!
GRASIM	2778.60	0.80	0.03%	5.11	142.06	2977.80	6.69%	2276.95	22.03%	-0.72%	10.18%
HCLTECH	1596.90	-1.60	-0.10%	25.44	404.06	2012.20	20.64%	1302.75	22.58%	6.94%	-14.65%
HDFCBANK	989.00	2.35	0.24%	213.87	2106.49	1020.50	3.09%	812.15	21.78%	0.99%	-42.58%
HDFCLIFE	772.30	-9.90	-1.27%	13.73	106.17	820.75	5.90%	584.30	32.18%	4.78%	11.74%
HINDALCO	803.00	-8.95	-1.10%	41.14	330.82	864.00	7.06%	546.45	46.95%	5.42%	24.60%
HINDUNILVR	2426.00	18.40	0.76%	9.76	236.25	2750.00	11.78%	2136.00	13.58%	-3.42%	-2.19%
ICICIBANK	1373.20	-12.70	-0.92%	96.94	1329.04	1500.00	8.45%	1186.00	15.78%	0.47%	9.07%
INDIGO	5895.00	-10.50	-0.18%	6.44	379.54	6232.50	5.42%	3830.00	53.92%	2.04%	50.92%
INFY	1505.80	-36.00	-2.33%	97.40	1463.71	2006.45	24.95%	1307.00	15.21%	3.25%	-17.50%
ITC	408.25	2.55	0.63%	640.20	2569.71	491.00	16.85%	390.15	4.64%	1.62%	-14.20%
JIOFIN	315.00	4.30	1.38%	136.76	429.48	347.35	9.31%	198.65	58.57%	0.73%	0.15%
JSWSTEEL	1169.20	-14.70	-1.24%	10.59	123.63	1223.90	4.47%	880.00	32.86%	1.94%	23.68%
KOTAKBANK	2082.80	7.60	0.37%	24.41	506.30	2301.90	9.52%	1679.05	24.05%	-3.57%	20.55%
LT	4004.00	1.50	0.04%	19.17	765.70	4062.60	1.44%	2965.30	35.03%	6.18%	11.45%
M&M	3698.00	-1.50	-0.04%	18.47	682.33	3781.00	2.20%	2425.00	52.49%	6.93%	27.63%
MARUTI	15708.00	-41.00	-0.26%	2.54	397.04	16660.00	5.71%	10725.00	46.46%	-3.52%	41.33%
MAXHEALTH	1101.90	3.90	0.36%	16.59	182.39	1314.30	16.16%	936.25	17.69%	-3.96%	6.53%
NESTLEIND	1269.70	-5.50	-0.43%	6.75	85.72	1311.60	3.19%	1055.00	20.35%	7.33%	-43.48%
NTPC	328.85	1.90	0.58%	91.70	300.79	387.60	15.16%	292.80	12.31%	-4.32%	-14.03%
ONGC	247.50	2.65	1.08%	91.85	227.46	273.50	9.51%	205.00	20.73%	2.77%	-2.07%
POWERGRID	270.90	1.05	0.39%	103.08	279.23	345.40	21.57%	247.30	9.54%	-5.70%	-16.38%
RELIANCE	1518.20	7.30	0.48%	76.83	1165.11	1551.00	2.11%	1114.85	36.18%	9.88%	18.57%
SBILIFE	2000.00	12.10	0.61%	6.79	135.06	2017.90	0.89%	1372.55	45.71%	9.51%	27.23%
SBIN	967.95	13.95	1.46%	110.33	1061.78	971.40	0.36%	680.00	42.35%	8.05%	15.40%
SHRIRAMFIN	808.50	-5.50	-0.68%	56.72	459.32	838.65	3.60%	493.35	63.88%	21.10%	-72.23%
SUNPHARMA	1755.00	17.60	1.01%	16.67	292.19	1910.00	8.12%	1548.00	13.37%	4.14%	-3.52%
TATACONSUM	1155.00	0.20	0.02%	18.33	212.06	1202.80	3.97%	882.90	30.82%	3.38%	19.35%
TMPV	392.90	-5.05	-1.27%	218.35	855.73	820.35	52.11%	376.30	4.41%	#VALUE!	#VALUE!
TATASTEEL	174.00	-2.65	-1.50%	383.46	666.98	186.94	6.92%	122.62	41.90%	2.09%	22.53%
TCS	3112.00	6.30	0.20%	22.11	684.32	4494.90	30.77%	2866.60	8.56%	3.28%	-26.01%
TECHM	1443.80	-7.60	-0.52%	12.21	175.36	1807.70	20.13%	1209.40	19.38%	0.03%	-13.97%
TITAN	3816.10	-23.10	-0.60%	5.75	219.80	3877.00	1.57%	2925.00	30.46%	8.65%	20.03%
TRENT	4392.00	65.60	1.52%	8.09	352.77	7493.05	41.39%	4262.60	3.04%	-7.59%	-33.73%
ULTRACEMCO	11875.00	-59.00	-0.49%	1.61	191.35	13097.00	9.33%	10047.85	18.18%	-1.96%	9.57%
WIPRO	245.15	-0.18	-0.07%	68.42	166.65	324.60	24.48%	228.00	7.52%	0.08%	-57.01%

## Disclaimer / Disclosures

### ANALYST CERTIFICATION

I, Mrs. Vaishali Parekh B.com, Research Analyst, author and the name subscribed to this report, hereby certify that all of the views expressed in this research report accurately reflect our views about the subject issuer(s) or securities. We also certify that no part of our compensation was, is, or will be directly or indirectly related to the specific recommendation(s) or view(s) in this report.

Terms & conditions and other disclosures:

Prabhudas Lilladher Pvt. Ltd, Mumbai, India (hereinafter referred to as "PL") is engaged in the business of Stock Broking, Portfolio Manager, Depository Participant and distribution for third party financial products. PL is a subsidiary of Prabhudas Lilladher Advisory Services Pvt Ltd. which has its various subsidiaries engaged in business of commodity broking, investment banking, financial services (margin funding) and distribution of third party financial/other products, details in respect of which are available at [www.plindia.com](http://www.plindia.com)

This document has been prepared by the Research Division of PL and is meant for use by the recipient only as information and is not for circulation. This document is not to be reported or copied or made available to others without prior permission of PL. It should not be considered or taken as an offer to sell or a solicitation to buy or sell any security.

The information contained in this report has been obtained from sources that are considered to be reliable. However, PL has not independently verified the accuracy or completeness of the same. Neither PL nor any of its affiliates, its directors or its employees accepts any responsibility of whatsoever nature for the information, statements and opinion given, made available or expressed herein or for any omission therein.

Recipients of this report should be aware that past performance is not necessarily a guide to future performance and value of investments can go down as well. The suitability or otherwise of any investments will depend upon the recipient's particular circumstances and, in case of doubt, advice should be sought from an independent expert/advisor.

Either PL or its affiliates or its directors or its employees or its representatives or its clients or their relatives may have position(s), make market, act as principal or engage in transactions of securities of companies referred to in this report and they may have used the research material prior to publication.

PL may from time to time solicit or perform investment banking or other services for any company mentioned in this document.

PL is registered as Research Analyst under Securities and Exchange Board of India (Research Analysts) Regulations, 2014 PL submits that no material disciplinary action has been taken on us by any Regulatory Authority impacting Equity Research Analysis activities.

PL or its research analysts or its associates or his relatives do not have any financial interest in the subject company.

PL or its research analysts or its associates or his relatives do not have actual/beneficial ownership of one per cent or more securities of the subject company at the end of the month immediately preceding the date of publication of the research report.

PL or its research analysts or its associates or his relatives do not have any material conflict of interest at the time of publication of the research report.

PL or its associates might have received compensation from the subject company in the past twelve months.

PL or its associates might have managed or co-managed public offering of securities for the subject company in the past twelve months or mandated by the subject company for any other assignment in the past twelve months.

PL or its associates might have received any compensation for investment banking or merchant banking or brokerage services from the subject company in the past twelve months.

PL or its associates might have received any compensation for products or services other than investment banking or merchant banking or brokerage services from the subject company in the past twelve months PL or its associates might have received any compensation or other benefits from the subject company or third party in connection with the research report.

PL encourages independence in research report preparation and strives to minimize conflict in preparation of research report. PL or its analysts did not receive any compensation or other benefits from the subject Company or third party in connection with the preparation of the research report. PL or its Research Analysts do not have any material conflict of interest at the time of publication of this report.

It is confirmed that Mrs.Vaishali Parekh B.com, Research Analyst of this report has not received any compensation from the companies mentioned in the report in the preceding twelve months compensation of our Research Analysts is not based on any specific merchant banking, investment banking or brokerage service transactions.

The Research analysts for this report certifies that all of the views expressed in this report accurately reflect his or her personal views about the subject company or companies and its or their securities, and no part of his or her compensation was, is or will be, directly or indirectly related to specific recommendations or views expressed in this report.

The research analysts for this report has not served as an officer, director or employee of the subject company PL or its research analysts have not engaged in market making activity for the subject company

Our sales people, traders, and other professionals or affiliates may provide oral or written market commentary or trading strategies to our clients that reflect opinions that are contrary to the opinions expressed herein, and our proprietary trading and investing businesses may make investment decisions that are inconsistent with the recommendations expressed herein. In reviewing these materials, you should be aware that any or all of the foregoing, among other things, may give rise to real or potential conflicts of interest.

PL and its associates, their directors and employees may (a) from time to time, have a long or short position in, and buy or sell the securities of the subject company or (b) be engaged in any other transaction involving such securities and earn brokerage or other compensation or act as a market maker in the financial instruments of the subject company or act as an advisor or lender/borrower to the subject company or may have any other potential conflict of interests with respect to any recommendation and other related information and opinions.