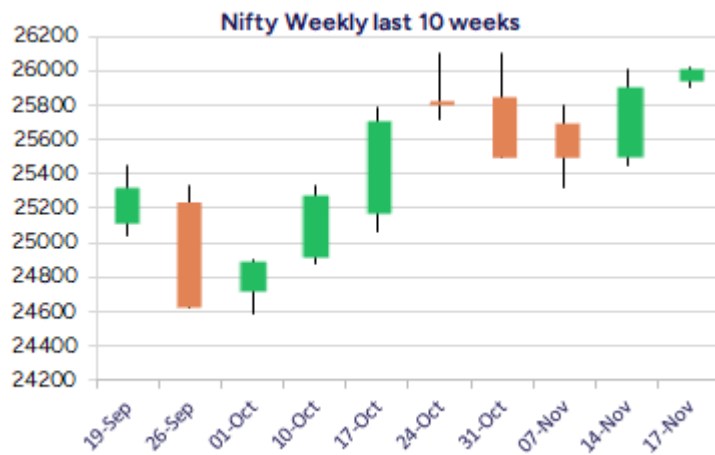
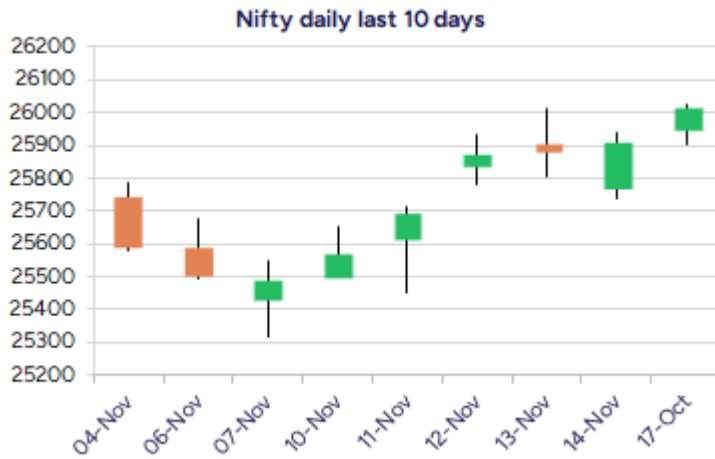


* Sensex 84950.95 + 388.17

* Nifty 26013.45 + 103.40

* Bank Nifty 58962.70 + 445.15



*Blue candle → Close rate > Open rate * Red candle → Close rate < Open rate

Market Preview

Nifty scales 26000 zone

Nifty after the strong recovery witnessed since the last week finally closed above the 26000 zone to improve the sentiment and can anticipate for further upward move in the coming days. BankNifty moved past the crucial hurdle of 58600 level to indicate a breakout with the trend improving and can anticipate for further rise in the coming days. The market breadth was almost flat slightly on the positive side with the advance decline indicating a neutral ratio at close.

Market Forecast

Nifty daily range 25900 - 26200

Nifty surged ahead during the session to close above the 26000 zone with bias getting stronger and can expect for further rise in the coming days with the index almost ready to retest the previous peak zone of 26277 level with the undertone maintained strong. As mentioned earlier, the index would have the important near-term support at 25700 level which needs to be sustained to maintain the overall bias intact and upside we have next targets of 26300 and 26700 levels anticipated.

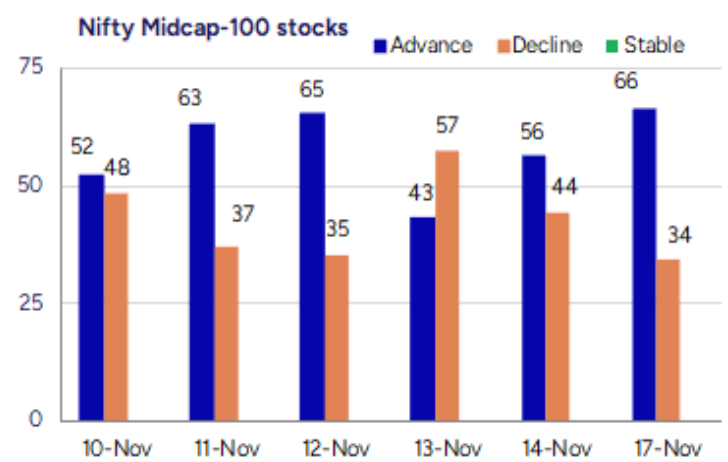
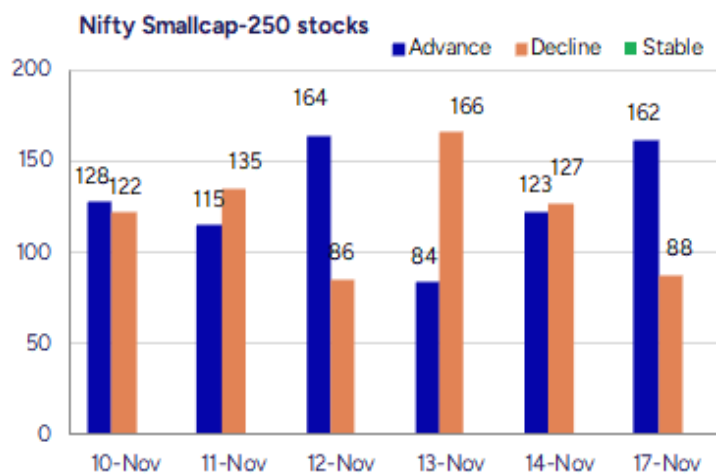
BankNifty finally witnessed a convincing breakout above the tough hurdle at 58600 level with a gap up opening and remained stable for rest part of the session to enter a new territory with bias getting strong expect for fresh upward move in the coming sessions. The index would have the important and major support positioned near the 50EMA at 57000 level which needs to be sustained and expect for higher targets of 60500 and 63000 levels in the coming days.

The support for the day is seen at 25900 levels, while the resistance is seen at 26200 levels. BankNifty would have the daily range of 58600-59600 levels.

Indices	Period	Closing	% Chng	Trend	Reversal	2 Sup	1 Sup	Pivot	1 Res	2 Res
Nifty	Daily	26013.45	0.40%	5	25862.20	25863	25938	25981	26056	26099
	Weekly	25910.05	1.64%	1	25734.65	25233	25572	25790	26129	26348
	Monthly	25722.10	4.51%	1	25438.50	23979	24851	25477	26349	26976
Bank Nifty	Daily	58962.70	0.76%	5	58629.10	58460	58711	58857	59108	59253
	Weekly	58517.55	1.11%	7	57918.60	57221	57869	58243	58891	59264
	Monthly	57776.35	5.75%	1	57492.70	52984	55380	56979	59375	60974
Sensex	Daily	84950.95	0.46%	5	84448.75	84433	84692	84840	85099	85247
	Weekly	84562.78	1.62%	1	83947.85	82412	83487	84203	85279	85995
	Monthly	83938.71	4.57%	1	83147.90	77999	80969	83130	86099	88260

Gainers - Losers (Nifty 500 Stocks)

Gainers				Losers			
Company Name	Last Price	% Gain	Volume	Company Name	Last Price	% Loss	Volume
Winy Immi	76.8	20	11000	Blue Pebble	130.4	-20	94800
VLS Finance	252.31	20	881584	Vaswani Ind	56.63	-16.29	727119
Sylvan Plyboard	71.4	20	54000	Delta Autocorp	53	-14.86	234000
Billionbrains G	174.45	17.45	466421770	Rajgor Castor	20	-13.04	96000
Arabian Petrole	81.45	16.36	130000	Bombay Metrics	44	-12.96	119200
Canarys	33.45	16.35	1000000	Quicktouch Tech	33.2	-12.63	65000
Bannari A Spg	29.03	15.89	830245	Gabriel India	1023.1	-12.32	1906225



Nifty Daily chart with RSI indicator



BankNifty Daily chart with RSI indicator



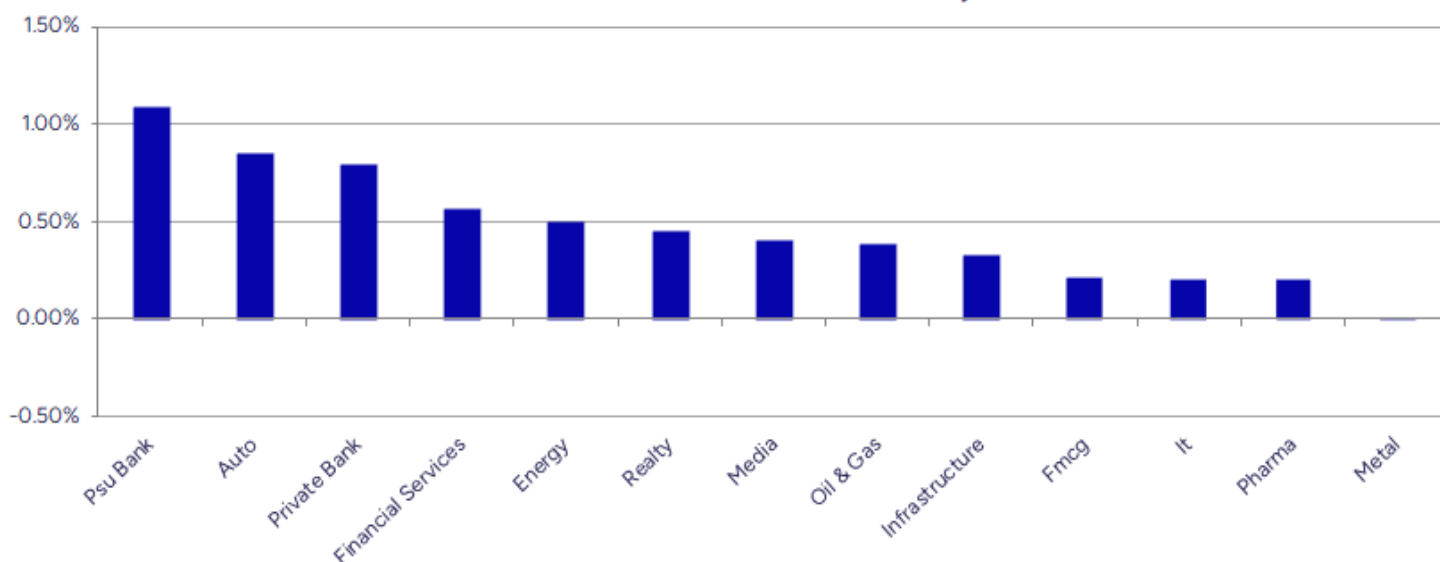
Breakouts - Cross above 200 DMA			
Company Name	LCP	Change %	200 DMA
Canarys Automat	33.45	10.65	30.23
Energy Dev	22.18	9.91	20.18
Ahluwalia	981.6	9.44	896.89
Ideaforge Tech	504.55	7.03	471.42
Equitas Bank	64.72	6.53	60.75
DAM Capital Adv	251.84	4.14	241.82
D. P. Abhushan	1568.7	3.98	1508.61
DDEVPLASTIK	294.35	3.11	285.47
Optiemus Infra	588.3	2.87	571.86
Alembic Pharma	948.85	2.54	925.31
Jubilant Ing.	718.25	2.24	702.51
Deep Ind	488.4	1.37	481.78
Fine Organics	4587.9	1.33	4527.62
Gopal Snacks	333.85	0.97	330.63
Harsha Engineer	400.45	0.76	397.43
Krishna Institu	676.05	0.76	670.92
Dixon Technolog	15641	0.48	15566.65
Cords Cable Ind	182.27	0.41	181.52

* Stocks crossing above its Simple Moving Average (200DMA)

Breakdown - Cross below 200 DMA			
Company Name	LCP	Change %	200 DMA
Bombay Metrics	44	-11.40	49.66
Cambridge Tech	47.79	-2.77	49.15
Fineotex Chem	24.81	-2.71	25.5
Setco Auto	17.17	-2.28	17.57
Balu Forge Indu	605.2	-2.06	617.94
Everest Kanto	132.47	-1.84	134.96
Archean Chem	607.85	-1.65	618.06
Mangalam Organ	485.5	-1.61	493.44
Chalet Hotels	870.95	-1.22	881.67
Archies	19.55	-0.91	19.73
Goldiam Inter	374.5	-0.70	377.13
Aaron Industrie	188.65	-0.60	189.79
Everest Ind	561.2	-0.58	564.48
AksharChem	254.5	-0.49	255.75
Deccan Cements	883.3	-0.45	887.26
Aeroflex Ind.	184.75	-0.36	185.41
Brand Concepts	344.75	-0.10	345.11
IRIS Business S	339.75	-0.04	339.9

* Stocks crossing below its Simple Moving Average (200DMA)

Sectoral Indices - Gainers Losers for the day



Stocks witnessing a volume surge as compared to their 5 day average volume

Watch out for the stocks that have seen a huge spurt in its share price over the last three days

Volume Shockers - NSE					
Company name	LCP	% Chg	Volume	Avg Vol *	% Chg
Ahluwalia	981.6	11.18	2746848	18315	14898
Jaro Insti Tech	708.3	12.95	4457261	79969	5474
Sri Adhikari	1030.15	5	247045	4654	5208
Atal	24.56	-0.49	5133492	100889	4988
Krishival Foods	459.3	-3.68	56279	1200	4590
Arabian Petrole	81.45	16.36	130000	2800	4543
Take Solutions	30.24	4.93	6551159	149297	4288
Narayana Hruda	2008.2	14.53	13331752	337861	3846
Unihealth Hospi	187.1	13.77	478000	12200	3818
Blue Pebble	130.4	-20	94800	2640	3491
SKF India	2078.1	1.62	510611	15007	3302
UTKARSHBNK	16.85	3.37	35536012	1045115	3300
Touchwood Enter	105.03	1.97	156814	4675	3254
VLS Finance	252.31	20	881584	26481	3229
B&B Triplewall	216.95	9.97	112930	3802	2870
Spaisa Capita	315.2	9.01	1565107	57005	2646
Ideaforge Tech	504.55	8.59	6504309	273033	2282
Hilton Metal	46.86	2.76	1097516	54606	1910
SHUBHLAXMI	17.85	5	25000	1400	1686
Motor and Gen F	24.6	-4.87	134052	7860	1605

* the Average Volume of last 5 days

Price Shockers - NSE				
Company name	LCP	Prv Close	% Chg	Volume
Safe Enterprise	308.45	239.2	28.95	289500
GE Power India	372.7	296.9	25.53	2337473
Service Care	52.65	42	25.36	38000
VLS Finance	252.31	201.47	25.23	881584
Universal Cable	893.9	725.1	23.28	825734
Macpower	979.2	812.45	20.52	293200
Rico Auto	110.6	93.06	18.85	37225976
Aarvi Encon	141.42	119.12	18.72	175576
Vindhya Telelin	1611.9	1370.5	17.61	60172
CSL Fin	312.95	267.25	17.1	56560
Sylvan Plyboard	71.4	61	17.05	54000
Unihealth Hospi	187.1	160	16.94	478000
Bhagyanagar Ind	161.5	138.36	16.72	1732544
Midwest	1273.6	1097.8	16.01	754545
Ambey Labs	42.8	36.95	15.83	6000
Soma Textile	138.93	120.02	15.76	11672
Sri Adhikari	1030.15	889.95	15.75	247045
Indo Thai Secu	423	365.5	15.73	113876
Allcargo	13.74	11.88	15.66	3273121
Precision Wires	266.85	230.96	15.54	1003805

* the % price rise of the last 3 days

Nifty 50 stocks - Summary Details											
Symbol	LTP	Chng	% Chng	Volume (lacs)	Turnover (crs.)	52w High	Diff with 52w H	52w Low	Diff with 52w L	365 days % chng	30 days % chng
NIFTY 50	26013.45	103.40	0.40%	2646.11	23384.22	26104.20	0.35%	21743.65	19.64%	1.18%	10.54%
ADANIENT	2466.80	26.80	1.10%	26.73	654.45	2810.49	12.23%	1966.02	25.47%	-1.28%	-10.97%
ADANIPTS	1509.80	-2.90	-0.19%	17.51	263.99	1523.60	0.91%	995.65	51.64%	2.25%	19.62%
APOLLOHOSP	7485.00	64.50	0.87%	2.48	185.82	8099.50	7.59%	6001.00	24.73%	-6.09%	8.16%
ASIANPAINT	2885.40	-21.00	-0.72%	12.31	356.76	2926.90	1.42%	2124.75	35.80%	15.89%	17.04%
AXISBANK	1250.00	8.40	0.68%	40.88	512.05	1276.10	2.05%	933.50	33.90%	3.45%	8.85%
BAJAJ-AUTO	8949.00	106.00	1.20%	4.58	410.96	9698.60	7.73%	7089.35	26.23%	-3.36%	-6.75%
BAJAJFINSV	2080.00	14.20	0.69%	8.18	169.38	2195.00	5.24%	1551.65	34.05%	-0.86%	25.98%
BAJFINANCE	1027.00	8.50	0.83%	60.12	617.66	1102.50	6.85%	645.10	59.20%	-4.82%	-84.45%
BEL	424.90	-1.95	-0.46%	129.96	552.27	436.00	2.55%	240.25	76.86%	3.40%	51.93%
BHARTIARTL	2111.30	10.60	0.50%	59.99	1267.63	2135.60	1.14%	1511.00	39.73%	4.41%	35.49%
CIPLA	1536.40	4.30	0.28%	9.12	139.96	1673.00	8.16%	1335.00	15.09%	-2.88%	2.16%
COALINDIA	388.00	1.05	0.27%	38.47	149.23	427.45	9.23%	349.25	11.10%	-0.48%	-5.56%
DRREDDY	1244.00	-2.00	-0.16%	14.23	177.19	1405.90	11.52%	1020.00	21.96%	-0.79%	1.57%
EICHERMOT	6809.00	114.00	1.70%	7.90	534.74	7122.50	4.40%	4646.00	46.56%	-4.93%	37.09%
ETERNAL	309.60	5.85	1.93%	266.33	815.81	368.45	15.97%	194.80	58.93%	-11.35%	#VALUE!
GRASIM	2798.90	15.50	0.56%	4.59	128.02	2977.80	6.01%	2276.95	22.92%	-1.86%	10.28%
HCLTECH	1605.50	10.90	0.68%	20.01	320.15	2012.20	20.21%	1302.75	23.24%	7.29%	-14.22%
HDFCBANK	996.45	6.85	0.69%	183.96	1828.36	1020.50	2.36%	812.15	22.69%	-1.29%	-41.54%
HDFCLIFE	768.30	-5.40	-0.70%	26.39	203.00	820.75	6.39%	584.30	31.49%	3.72%	11.48%
HINDALCO	808.00	4.35	0.54%	27.71	222.92	864.00	6.48%	546.45	47.86%	3.99%	28.10%
HINDUNILVR	2425.50	-2.20	-0.09%	9.20	222.95	2750.00	11.80%	2136.00	13.55%	-6.76%	1.61%
ICICIBANK	1379.10	6.10	0.44%	76.61	1056.34	1500.00	8.06%	1186.00	16.28%	-4.43%	9.23%
INDIGO	5878.00	-30.50	-0.52%	6.08	357.03	6232.50	5.69%	3838.95	53.11%	1.03%	51.84%
INFY	1507.00	4.20	0.28%	79.10	1188.42	2006.45	24.89%	1307.00	15.30%	4.28%	-19.40%
ITC	407.50	-0.65	-0.16%	78.55	320.01	491.00	17.01%	390.15	4.45%	-0.97%	-12.40%
JIOFIN	312.45	-2.45	-0.78%	88.76	278.16	347.35	10.05%	198.65	57.29%	1.81%	-1.08%
JSWSTEEL	1175.00	7.20	0.62%	11.03	129.46	1223.90	4.00%	880.00	33.52%	0.39%	24.36%
KOTAKBANK	2103.00	23.30	1.12%	50.30	1058.36	2301.90	8.64%	1689.80	24.45%	-5.72%	21.77%
LT	4025.00	20.60	0.51%	12.06	484.52	4062.60	0.93%	2965.30	35.74%	4.30%	13.56%
M&M	3731.70	33.10	0.89%	20.94	781.31	3781.00	1.30%	2425.00	53.88%	1.41%	31.75%
MARUTI	15889.00	205.00	1.31%	3.01	476.47	16660.00	4.63%	10725.00	48.15%	-4.37%	42.50%
MAXHEALTH	1122.20	19.10	1.73%	51.02	566.44	1314.30	14.62%	936.25	19.86%	-8.28%	9.62%
NESTLEIND	1270.00	-1.60	-0.13%	7.75	98.35	1311.60	3.17%	1055.00	20.38%	-1.39%	-41.74%
NTPC	330.10	1.65	0.50%	62.83	207.37	385.20	14.30%	292.80	12.74%	-3.68%	-11.83%
ONGC	248.35	0.75	0.30%	62.82	156.07	273.50	9.20%	205.00	21.15%	-0.04%	-1.28%
POWERGRID	273.70	2.40	0.88%	98.84	269.56	345.40	20.76%	247.30	10.68%	-6.37%	-13.07%
RELIANCE	1518.00	-0.90	-0.06%	58.71	890.63	1551.00	2.13%	1114.85	36.16%	7.21%	19.82%
SBILIFE	1993.80	-7.10	-0.35%	7.27	145.40	2017.90	1.19%	1372.55	45.26%	8.50%	28.07%
SBIN	973.00	5.15	0.53%	74.15	721.55	976.00	0.31%	680.00	43.09%	8.85%	20.34%
SHRIRAMFIN	817.55	8.25	1.02%	73.86	606.15	838.65	2.52%	493.35	65.71%	19.81%	-71.33%
SUNPHARMA	1764.00	6.90	0.39%	14.31	251.83	1910.00	7.64%	1548.00	13.95%	4.65%	-0.63%
TATACONSUM	1179.00	21.20	1.83%	21.06	247.28	1202.80	1.98%	882.90	33.54%	-0.70%	25.17%
TMPV	372.65	-18.55	-4.74%	323.93	1207.75	820.35	54.57%	363.00	2.66%	#VALUE!	#VALUE!
TATASTEEL	173.40	-0.86	-0.49%	282.04	488.95	186.94	7.24%	122.62	41.41%	1.18%	26.29%
TCS	3100.00	-6.00	-0.19%	22.33	692.15	4494.90	31.03%	2866.60	8.14%	4.85%	-25.08%
TECHM	1452.80	13.60	0.94%	9.99	144.77	1807.70	19.63%	1209.40	20.13%	-0.58%	-14.71%
TITAN	3863.90	34.70	0.91%	5.05	194.86	3877.00	0.34%	2925.00	32.10%	4.20%	20.28%
TRENT	4401.00	9.80	0.22%	5.52	242.78	7493.05	41.27%	4262.60	3.25%	-8.79%	-32.06%
ULTRACEMCO	11775.00	-99.00	-0.83%	1.94	229.04	13097.00	10.09%	10047.85	17.19%	-4.01%	10.68%
WIPRO	243.70	-0.67	-0.27%	65.59	159.90	324.60	24.92%	228.00	6.89%	1.44%	-56.88%

Disclaimer / Disclosures

ANALYST CERTIFICATION

I, Mrs. Vaishali Parekh B.com, Research Analyst, author and the name subscribed to this report, hereby certify that all of the views expressed in this research report accurately reflect our views about the subject issuer(s) or securities. We also certify that no part of our compensation was, is, or will be directly or indirectly related to the specific recommendation(s) or view(s) in this report.

Terms & conditions and other disclosures:

Prabhudas Lilladher Pvt. Ltd, Mumbai, India (hereinafter referred to as "PL") is engaged in the business of Stock Broking, Portfolio Manager, Depository Participant and distribution for third party financial products. PL is a subsidiary of Prabhudas Lilladher Advisory Services Pvt Ltd. which has its various subsidiaries engaged in business of commodity broking, investment banking, financial services (margin funding) and distribution of third party financial/other products, details in respect of which are available at www.plindia.com

This document has been prepared by the Research Division of PL and is meant for use by the recipient only as information and is not for circulation. This document is not to be reported or copied or made available to others without prior permission of PL. It should not be considered or taken as an offer to sell or a solicitation to buy or sell any security.

The information contained in this report has been obtained from sources that are considered to be reliable. However, PL has not independently verified the accuracy or completeness of the same. Neither PL nor any of its affiliates, its directors or its employees accepts any responsibility of whatsoever nature for the information, statements and opinion given, made available or expressed herein or for any omission therein.

Recipients of this report should be aware that past performance is not necessarily a guide to future performance and value of investments can go down as well. The suitability or otherwise of any investments will depend upon the recipient's particular circumstances and, in case of doubt, advice should be sought from an independent expert/advisor.

Either PL or its affiliates or its directors or its employees or its representatives or its clients or their relatives may have position(s), make market, act as principal or engage in transactions of securities of companies referred to in this report and they may have used the research material prior to publication.

PL may from time to time solicit or perform investment banking or other services for any company mentioned in this document.

PL is registered as Research Analyst under Securities and Exchange Board of India (Research Analysts) Regulations, 2014 PL submits that no material disciplinary action has been taken on us by any Regulatory Authority impacting Equity Research Analysis activities.

PL or its research analysts or its associates or his relatives do not have any financial interest in the subject company.

PL or its research analysts or its associates or his relatives do not have actual/beneficial ownership of one per cent or more securities of the subject company at the end of the month immediately preceding the date of publication of the research report.

PL or its research analysts or its associates or his relatives do not have any material conflict of interest at the time of publication of the research report.

PL or its associates might have received compensation from the subject company in the past twelve months.

PL or its associates might have managed or co-managed public offering of securities for the subject company in the past twelve months or mandated by the subject company for any other assignment in the past twelve months.

PL or its associates might have received any compensation for investment banking or merchant banking or brokerage services from the subject company in the past twelve months.

PL or its associates might have received any compensation for products or services other than investment banking or merchant banking or brokerage services from the subject company in the past twelve months PL or its associates might have received any compensation or other benefits from the subject company or third party in connection with the research report.

PL encourages independence in research report preparation and strives to minimize conflict in preparation of research report. PL or its analysts did not receive any compensation or other benefits from the subject Company or third party in connection with the preparation of the research report. PL or its Research Analysts do not have any material conflict of interest at the time of publication of this report.

It is confirmed that Mrs.Vaishali Parekh B.com, Research Analyst of this report has not received any compensation from the companies mentioned in the report in the preceding twelve months compensation of our Research Analysts is not based on any specific merchant banking, investment banking or brokerage service transactions.

The Research analysts for this report certifies that all of the views expressed in this report accurately reflect his or her personal views about the subject company or companies and its or their securities, and no part of his or her compensation was, is or will be, directly or indirectly related to specific recommendations or views expressed in this report.

The research analysts for this report has not served as an officer, director or employee of the subject company PL or its research analysts have not engaged in market making activity for the subject company

Our sales people, traders, and other professionals or affiliates may provide oral or written market commentary or trading strategies to our clients that reflect opinions that are contrary to the opinions expressed herein, and our proprietary trading and investing businesses may make investment decisions that are inconsistent with the recommendations expressed herein. In reviewing these materials, you should be aware that any or all of the foregoing, among other things, may give rise to real or potential conflicts of interest.

PL and its associates, their directors and employees may (a) from time to time, have a long or short position in, and buy or sell the securities of the subject company or (b) be engaged in any other transaction involving such securities and earn brokerage or other compensation or act as a market maker in the financial instruments of the subject company or act as an advisor or lender/borrower to the subject company or may have any other potential conflict of interests with respect to any recommendation and other related information and opinions.