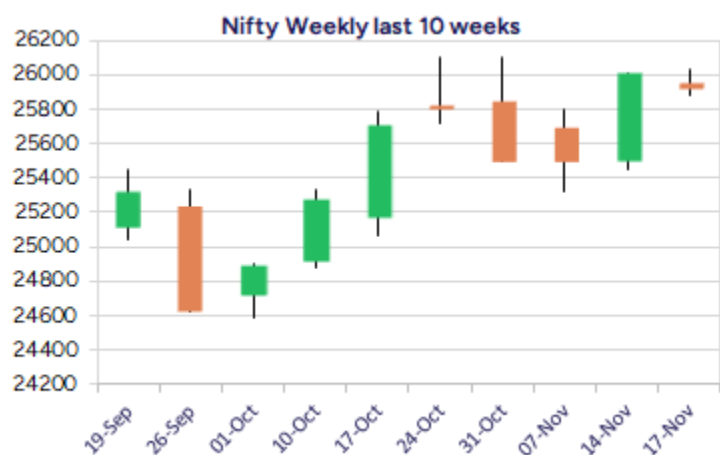
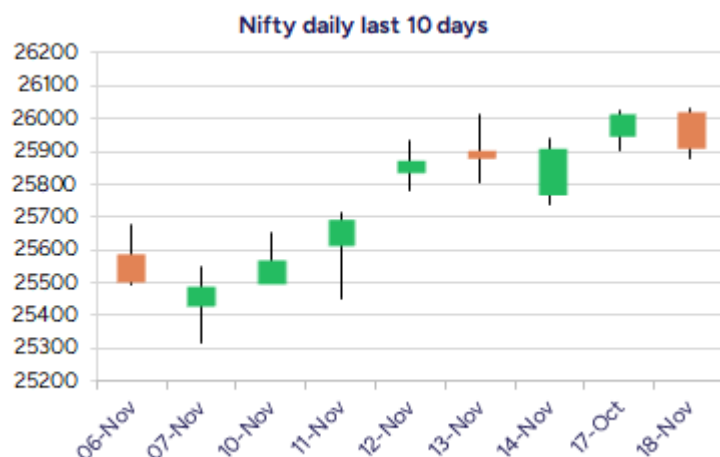


Date: 19th November 2025

* Sensex 84673.02 - 277.93

* Nifty 25910.05 - 103.40

* Bank Nifty 58899.25 - 63.45



*Blue candle → Close rate > Open rate * Red candle → Close rate < Open rate

Market Preview

Nifty takes a breather at 26000 zone

Nifty witnessed profit booking amid a volatile session to end near the 25900 zone with bias overall maintained positive and can expect another fresh round of upward move after a short period of cooling off from the peak zone. BankNifty resisted near the 59100 level and taken a halt to the ongoing upward movement with bias and sentiment maintained with an optimistic approach for the coming days. The market breadth was negative with the advance decline indicating a ratio of 1:2 at close.

Market Forecast

Nifty daily range 25750 - 26100

Nifty witnessed a breather near the psychological level of 26000 zone and amid some volatility witnessed some profit booking to close near the 25900 level with bias maintained positive and with the undertone overall maintained strong can anticipate for a turnaround after a short consolidation or dip in the coming sessions. The index would have the important near-term support at 25700 level, as we have been mentioning earlier, needs to be sustained to maintain the overall trend intact and on the upside can expect for next targets of 26300 and 26700 levels anticipated.

BankNifty halted near the 59100 zone after the strong breakout witnessed in the previous session and with bias maintained positive has further scope for upward move in the coming sessions with near-term support positioned near the 58500 level which needs to be sustained. The index would have the important and major support positioned near the 50EMA at 57000 level, as mentioned earlier, and on the upside once a stability is confirmed, one can expect for higher targets of 60500 and 63000 levels in the coming days.

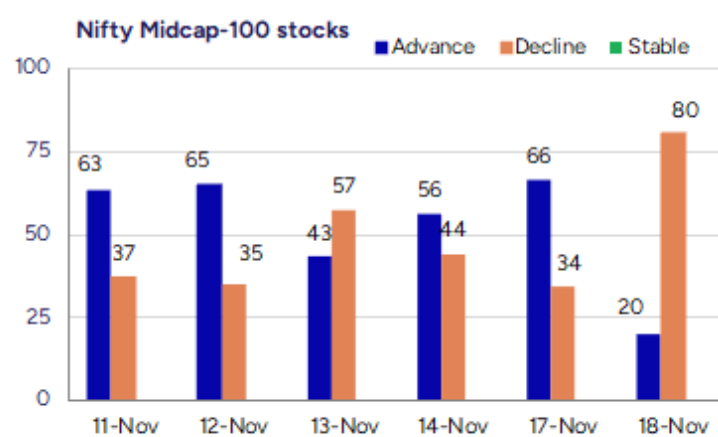
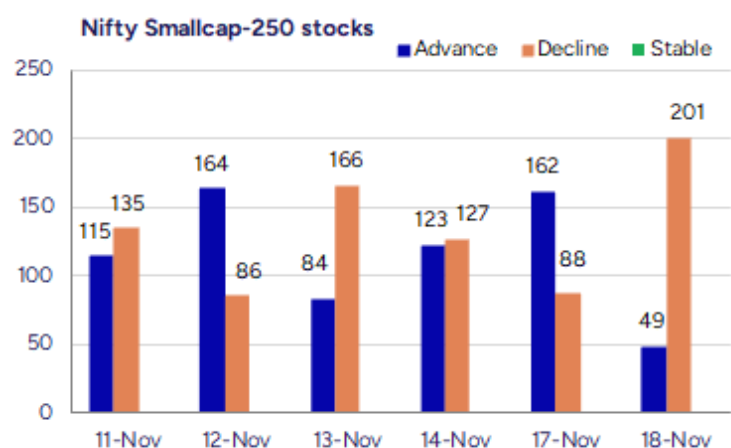
The support for the day is seen at 25750 levels, while the resistance is seen at 26100 levels. BankNifty would have the daily range of 58500-59500 levels.

Indices	Period	Closing	% Chng	Trend	Reversal	2 Sup	1 Sup	Pivot	1 Res	2 Res
Nifty	Daily	25910.05	-0.40%	6	25900.10	25785	25848	25939	26001	26092
	Weekly	25910.05	1.64%	1	25734.65	25233	25572	25790	26129	26348
	Monthly	25722.10	4.51%	1	25438.50	23979	24851	25477	26349	26976
Bank Nifty	Daily	58899.25	-0.11%	6	58718.20	58629	58764	58934	59069	59239
	Weekly	58517.55	1.11%	7	57918.60	57221	57869	58243	58891	59264
	Monthly	57776.35	5.75%	1	57492.70	52984	55380	56979	59375	60974
Sensex	Daily	84673.02	-0.33%	6	84587.35	84274	84473	84758	84958	85242
	Weekly	84562.78	1.62%	1	83947.85	82412	83487	84203	85279	85995
	Monthly	83938.71	4.57%	1	83147.90	77999	80969	83130	86099	88260

Gainers - Losers (Nifty 500 Stocks)

Gainers			
Company Name	Last Price	% Gain	Volume
WOL 3D India	168	20	200000
Accretion Pharm	77.7	20	205200
Securecloud Tec	19.63	19.99	407324
Energy Dev	26.61	19.97	2655757
Baweja Studios	46.7	18.53	86400
Unihealth Hospi	221.4	18.33	541000
Bang Overseas	57.6	11.35	888698

Losers			
Company Name	Last Price	% Loss	Volume
Blue Pebble	110.5	-15.26	143200
ARC Insulation	91.85	-10.7	85000
Fischer Medical	47.58	-10.01	190560
Rhetan TMT	22.86	-8.74	4457538
GSS Infotech	20.14	-8.58	597641
Emkay Taps	125.2	-8.38	11400
Atal	22.53	-8.27	15182045



Nifty Daily chart with RSI indicator



BankNifty Daily chart with RSI indicator

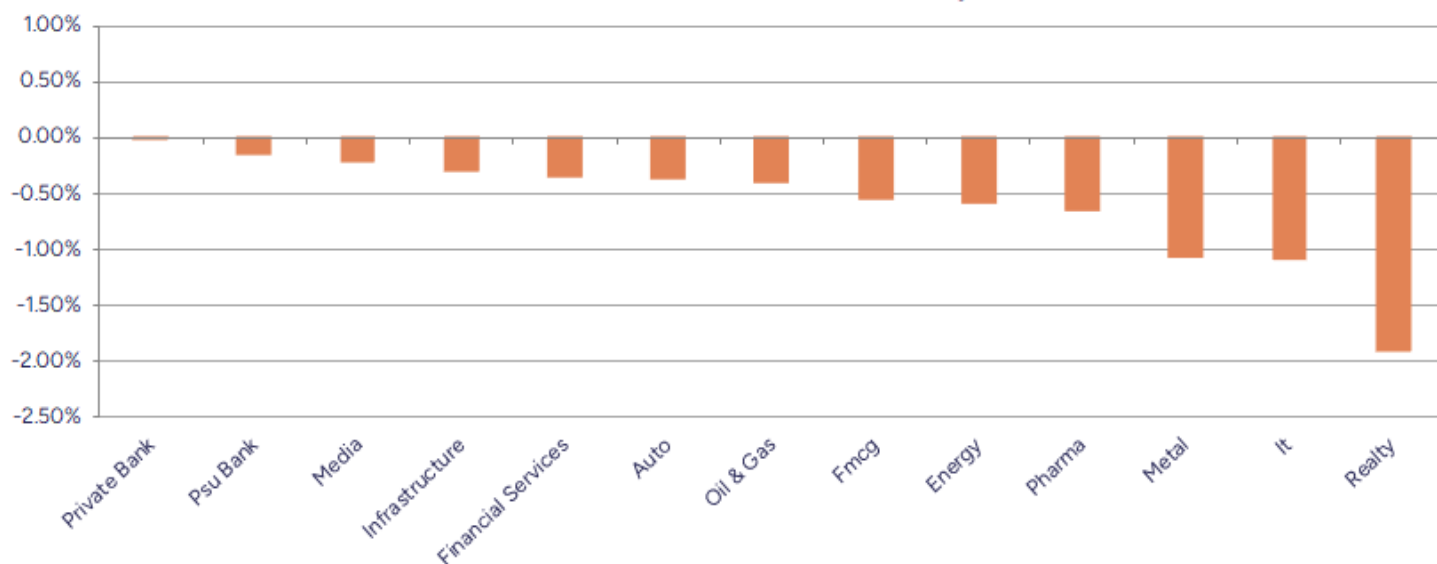


Breakouts - Cross above 200 DMA				Breakdown - Cross below 200 DMA			
Company Name	LCP	Change %	200 DMA	Company Name	LCP	Change %	200 DMA
Bang Overseas	57.6	8.91	52.89	IRIS Business S	322.8	-4.62	338.44
Bombay Burmah	2022.7	6.36	1901.74	Chaman Metallic	143.95	-3.48	149.14
Ugro Capital	185.98	5.95	175.54	WE WIN	48.5	-3.37	50.19
Ameya Precision	112.4	4.70	107.35	Pritish Nandy	28.69	-3.17	29.63
Spandana Sphoor	282.65	4.55	270.36	Mishra Dhatu Ni	350.6	-2.77	360.6
Destiny Logisti	125.4	3.84	120.76	Thaai Casting	105	-2.62	107.83
Rajdarshan Ind	48.01	3.60	46.34	Brand Concepts	335	-2.60	343.95
Lambodhara Text	136.34	2.27	133.31	Mayur Uniquoter	514.15	-2.51	527.4
Thomas Cook	157.8	1.89	154.88	J G Chemicals	389.15	-2.43	398.83
Nahar Ent	118	1.80	115.91	Brightcom Group	13.54	-2.31	13.86
Pidilite Ind	1495.3	0.82	1483.21	LMW	15276	-2.20	15619
Cyient DLM	454.85	0.70	451.71	Star Cement	229.25	-2.18	234.36
Sundram	984.75	0.52	979.65	OneSource Spec	1722.1	-1.99	1757.15
Silkflex Poly	82.95	0.52	82.52	PDS	382.45	-1.93	389.97
Peninsula Land	31.92	0.38	31.8	MSTC	508.75	-1.82	518.17
Srivari Spices	165	0.36	164.4	Whirlpool	1213.5	-1.77	1235.4
BAG Films	6.88	0.29	6.86	Guj Raffia Ind	43.05	-1.69	43.79
NCL Industries	209.05	0.18	208.67	Gulf Oil Lubric	1178.1	-1.62	1197.5

* Stocks crossing above its Simple Moving Average (200DMA)

* Stocks crossing below its Simple Moving Average (200DMA)

Sectoral Indices - Gainers Losers for the day



Stocks witnessing a volume surge as compared to their 5 day average volume

Watch out for the stocks that have seen a huge spurt in its share price over the last three days

Volume Shockers - NSE					
Company name	LCP	% Chg	Volume	Avg Vol *	% Chg
Atal	22.53	-8.27	15182045	100889	14948
Bombay Burmah	2022.7	9.76	5898301	80396	7237
Bang Overseas	57.6	11.35	889000	13275	6597
A G Universal	68	4.06	326000	6400	4994
Fairchem Org.	696.6	9.67	723037	18376	3835
Akzo Nobel	3381.7	1.61	581622	16018	3531
Pansari Develop	320.3	9.99	40589	1230	3200
Sapphire Foods	261.8	4.2	1855369	68650	2603
Ugro Capital	186.65	8.15	3834520	159893	2298
Take Solutions	30.45	4.71	2868870	149297	1822
Baweja Studios	46.7	18.53	86400	4800	1700
Spaisa Capita	346.65	9.98	6315216	354968	1679
Krishival Foods	436.35	-5	17917	1200	1393
Rajdarshan Ind	48.01	6.88	18026	1224	1372
Kaynes Tech	5889	-5.58	3155993	215216	1366
UTKARSHBNK	16.77	-0.47	15210276	1045115	1355
RPG Life	2299.8	-0.46	77803	5421	1335
Sundram	984.75	2.49	1706252	139489	1123
Energy Dev	26.61	19.97	2655757	228690	1061
Studds Access	586.3	7.25	3571477	311543	1046

* the Average Volume of last 5 days

Price Shockers - NSE				
Company name	LCP	Prv Close	% Chg	Volume
Energy Dev	26.61	19.21	38.52	2655757
Unihealth Hospi	221.4	164.45	34.63	541000
VLS Finance	258.5	210.26	22.94	467962
Winny Immi	78	64	21.88	3000
Sylvan Plyboard	72	59.5	21.01	12000
Spaisa Capita	346.65	289.15	19.89	6315216
Ahluwalia	1046.45	882.9	18.52	2815202
Baweja Studios	46.7	39.95	16.9	86400
Pansari Develop	320.3	274.5	16.68	40589
Bannari A Spg	29.09	25.05	16.13	282308
Udayshivakumar	27.37	23.93	14.38	119263
Rico Auto	112.67	98.81	14.03	17478137
Macpower	956.65	850.5	12.48	40771
South West Pinn	202.45	180.55	12.13	483585
JTL Ind.	68.12	60.85	11.95	6942146
BB Triplewall	220	197.28	11.52	41070
Premium Plast	35.2	31.6	11.39	27000
Narayana Hruda	1951.7	1753.5	11.3	4611998
Bang Overseas	57.6	51.94	10.9	889000
Bombay Burmah	2022.7	1830.7	10.49	5898301

* the % price rise of the last 3 days

Nifty 50 stocks - Summary Details											
Symbol	LTP	Chng	% Chng	Volume (lacs)	Turnover (crs.)	52w High	Diff with 52w H	52w Low	Diff with 52w L	365 days % chng	30 days % chng
NIFTY 50	25910.05	-103.40	-0.40%	2800.01	26059.47	26104.20	0.74%	21743.65	19.16%	1.18%	10.54%
ADANIET	2439.00	-23.00	-0.93%	12.45	304.87	2810.49	13.22%	1966.02	24.06%	-3.43%	-12.91%
ADANIPTS	1491.20	-16.40	-1.09%	18.19	272.70	1523.60	2.13%	995.65	49.77%	1.91%	19.22%
APOLLOHOSP	7376.00	-111.50	-1.49%	2.85	211.43	8099.50	8.93%	6001.00	22.91%	-5.24%	9.14%
ASIANPAINT	2902.20	18.80	0.65%	18.19	528.03	2926.90	0.84%	2124.75	36.59%	15.16%	16.30%
AXISBANK	1263.00	13.40	1.07%	101.76	1285.07	1276.10	1.03%	933.50	35.30%	4.12%	9.55%
BAJAJ-AUTO	8915.00	-30.50	-0.34%	2.76	247.39	9698.60	8.08%	7089.35	25.75%	-2.24%	-5.67%
BAJAJFINSV	2053.30	-26.30	-1.26%	7.34	150.92	2195.00	6.46%	1551.65	32.33%	-0.20%	26.82%
BAJFINANCE	1014.40	-12.40	-1.21%	45.62	463.10	1102.50	7.99%	645.10	57.25%	-4.05%	-84.32%
BEL	421.60	-2.95	-0.69%	133.41	565.88	436.00	3.30%	240.25	75.48%	2.85%	51.11%
BHARTIARTL	2146.10	33.90	1.60%	109.73	2352.89	2159.00	0.60%	1511.00	42.03%	4.98%	36.23%
CIPLA	1516.00	-19.60	-1.28%	7.48	113.81	1673.00	9.38%	1335.00	13.56%	-2.66%	2.39%
COALINDIA	383.65	-4.20	-1.08%	44.63	172.05	427.45	10.25%	349.25	9.85%	-0.24%	-5.34%
DRREDDY	1242.00	-2.40	-0.19%	9.72	120.63	1405.90	11.66%	1020.00	21.76%	-0.92%	1.44%
EICHERMOT	6785.00	-14.00	-0.21%	5.17	351.98	7122.50	4.74%	4646.00	46.04%	-3.46%	39.22%
ETERNAL	304.50	-5.05	-1.63%	249.86	771.60	368.45	17.36%	194.80	56.31%	-9.66%	#VALUE!
GRASIM	2755.00	-35.30	-1.27%	4.38	121.31	2977.80	7.48%	2276.95	21.00%	-1.62%	10.55%
HCLTECH	1592.50	-13.90	-0.87%	16.40	261.62	2012.20	20.86%	1302.75	22.24%	8.09%	-13.59%
HDFCBANK	990.85	-5.70	-0.57%	200.03	1989.62	1020.50	2.91%	812.15	22.00%	-0.60%	-41.13%
HDFCLIFE	760.60	-9.65	-1.25%	13.63	104.11	820.75	7.33%	584.30	30.17%	3.26%	10.99%
HINDALCO	796.85	-10.30	-1.28%	73.00	580.53	864.00	7.77%	546.45	45.82%	4.44%	28.66%
HINDUNILVR	2404.10	-20.90	-0.86%	12.29	296.01	2750.00	12.58%	2136.00	12.55%	-6.86%	1.50%
ICICIBANK	1370.00	-9.00	-0.65%	95.30	1310.06	1500.00	8.67%	1186.00	15.51%	-4.01%	9.71%
INDIGO	5758.50	-114.50	-1.95%	9.06	522.82	6232.50	7.61%	3907.05	47.39%	0.43%	50.93%
INFY	1486.80	-20.80	-1.38%	75.25	1120.74	2006.45	25.90%	1307.00	13.76%	4.61%	-19.14%
ITC	405.70	-1.40	-0.34%	76.62	310.78	491.00	17.37%	390.15	3.99%	-1.23%	-12.63%
JIOFIN	305.80	-6.20	-1.99%	88.69	273.04	347.35	11.96%	198.65	53.94%	0.87%	-1.99%
JSWSTEEL	1164.50	-11.00	-0.94%	19.12	222.19	1223.90	4.85%	880.00	32.33%	1.05%	25.18%
KOTAKBANK	2095.60	-7.30	-0.35%	20.60	431.17	2301.90	8.96%	1699.70	23.29%	-4.66%	23.13%
LT	3998.90	-28.80	-0.72%	17.49	699.84	4062.60	1.57%	2965.30	34.86%	4.90%	14.22%
M&M	3699.00	-35.90	-0.96%	26.14	968.26	3781.00	2.17%	2425.00	52.54%	2.40%	33.05%
MARUTI	15919.00	41.00	0.26%	3.93	625.44	16660.00	4.45%	10725.00	48.43%	-3.19%	44.27%
MAXHEALTH	1115.20	-6.40	-0.57%	57.79	649.34	1314.30	15.15%	936.25	19.11%	-6.74%	11.46%
NESTLEIND	1265.00	-5.30	-0.42%	8.10	102.45	1311.60	3.55%	1055.00	19.91%	-1.49%	-41.80%
NTPC	328.40	-1.80	-0.55%	67.76	222.48	380.00	13.58%	292.80	12.16%	-3.17%	-11.36%
ONGC	246.90	-1.15	-0.46%	77.09	190.91	273.50	9.73%	205.00	20.44%	0.15%	-1.10%
POWERGRID	274.15	0.60	0.22%	164.34	451.40	345.40	20.63%	247.30	10.86%	-5.59%	-12.35%
RELIANCE	1520.00	1.70	0.11%	110.45	1679.05	1551.00	2.00%	1114.85	36.34%	7.16%	19.78%
SBILIFE	1990.40	-5.60	-0.28%	8.56	170.94	2017.90	1.36%	1372.55	45.01%	8.24%	27.76%
SBIN	971.30	-2.05	-0.21%	65.95	641.49	976.70	0.55%	680.00	42.84%	9.47%	21.03%
SHRIRAMFIN	823.00	5.10	0.62%	66.84	549.18	838.65	1.87%	493.35	66.82%	21.08%	-71.02%
SUNPHARMA	1759.50	-4.40	-0.25%	14.30	251.29	1910.00	7.88%	1548.00	13.66%	5.05%	-0.24%
TATACONSUM	1152.00	-26.90	-2.28%	16.96	197.18	1202.80	4.22%	882.90	30.48%	1.11%	27.45%
TMPV	371.10	-1.60	-0.43%	174.85	649.80	820.35	54.76%	363.00	2.23%	#VALUE!	#VALUE!
TATASTEEL	172.44	-0.73	-0.42%	342.78	588.97	186.94	7.76%	122.62	40.63%	0.55%	25.50%
TCS	3080.10	-22.10	-0.71%	25.48	787.67	4494.90	31.48%	2866.60	7.45%	4.73%	-25.17%
TECHM	1420.70	-32.10	-2.21%	15.54	222.12	1807.70	21.41%	1209.40	17.47%	0.36%	-13.91%
TITAN	3885.00	16.40	0.42%	8.50	328.87	3900.00	0.38%	2925.00	32.82%	5.27%	21.51%
TRENT	4369.00	-35.60	-0.81%	3.17	138.87	7493.05	41.69%	4262.60	2.50%	-8.51%	-31.85%
ULTRACEMCO	11724.00	-54.00	-0.46%	3.18	373.21	13097.00	10.48%	10047.85	16.68%	-4.79%	9.78%
WIPRO	241.00	-3.05	-1.25%	47.30	114.34	324.60	25.75%	228.00	5.70%	1.31%	-56.93%

Disclaimer / Disclosures

ANALYST CERTIFICATION

I, Mrs. Vaishali Parekh B.com, Research Analyst, author and the name subscribed to this report, hereby certify that all of the views expressed in this research report accurately reflect our views about the subject issuer(s) or securities. We also certify that no part of our compensation was, is, or will be directly or indirectly related to the specific recommendation(s) or view(s) in this report.

Terms & conditions and other disclosures:

Prabhudas Lilladher Pvt. Ltd, Mumbai, India (hereinafter referred to as "PL") is engaged in the business of Stock Broking, Portfolio Manager, Depository Participant and distribution for third party financial products. PL is a subsidiary of Prabhudas Lilladher Advisory Services Pvt Ltd. which has its various subsidiaries engaged in business of commodity broking, investment banking, financial services (margin funding) and distribution of third party financial/other products, details in respect of which are available at www.plindia.com

This document has been prepared by the Research Division of PL and is meant for use by the recipient only as information and is not for circulation. This document is not to be reported or copied or made available to others without prior permission of PL. It should not be considered or taken as an offer to sell or a solicitation to buy or sell any security.

The information contained in this report has been obtained from sources that are considered to be reliable. However, PL has not independently verified the accuracy or completeness of the same. Neither PL nor any of its affiliates, its directors or its employees accepts any responsibility of whatsoever nature for the information, statements and opinion given, made available or expressed herein or for any omission therein.

Recipients of this report should be aware that past performance is not necessarily a guide to future performance and value of investments can go down as well. The suitability or otherwise of any investments will depend upon the recipient's particular circumstances and, in case of doubt, advice should be sought from an independent expert/advisor.

Either PL or its affiliates or its directors or its employees or its representatives or its clients or their relatives may have position(s), make market, act as principal or engage in transactions of securities of companies referred to in this report and they may have used the research material prior to publication.

PL may from time to time solicit or perform investment banking or other services for any company mentioned in this document.

PL is registered as Research Analyst under Securities and Exchange Board of India (Research Analysts) Regulations, 2014 PL submits that no material disciplinary action has been taken on us by any Regulatory Authority impacting Equity Research Analysis activities.

PL or its research analysts or its associates or his relatives do not have any financial interest in the subject company.

PL or its research analysts or its associates or his relatives do not have actual/beneficial ownership of one per cent or more securities of the subject company at the end of the month immediately preceding the date of publication of the research report.

PL or its research analysts or its associates or his relatives do not have any material conflict of interest at the time of publication of the research report.

PL or its associates might have received compensation from the subject company in the past twelve months.

PL or its associates might have managed or co-managed public offering of securities for the subject company in the past twelve months or mandated by the subject company for any other assignment in the past twelve months.

PL or its associates might have received any compensation for investment banking or merchant banking or brokerage services from the subject company in the past twelve months.

PL or its associates might have received any compensation for products or services other than investment banking or merchant banking or brokerage services from the subject company in the past twelve months PL or its associates might have received any compensation or other benefits from the subject company or third party in connection with the research report.

PL encourages independence in research report preparation and strives to minimize conflict in preparation of research report. PL or its analysts did not receive any compensation or other benefits from the subject Company or third party in connection with the preparation of the research report. PL or its Research Analysts do not have any material conflict of interest at the time of publication of this report.

It is confirmed that Mrs.Vaishali Parekh B.com, Research Analyst of this report has not received any compensation from the companies mentioned in the report in the preceding twelve months compensation of our Research Analysts is not based on any specific merchant banking, investment banking or brokerage service transactions.

The Research analysts for this report certifies that all of the views expressed in this report accurately reflect his or her personal views about the subject company or companies and its or their securities, and no part of his or her compensation was, is or will be, directly or indirectly related to specific recommendations or views expressed in this report.

The research analysts for this report has not served as an officer, director or employee of the subject company PL or its research analysts have not engaged in market making activity for the subject company

Our sales people, traders, and other professionals or affiliates may provide oral or written market commentary or trading strategies to our clients that reflect opinions that are contrary to the opinions expressed herein, and our proprietary trading and investing businesses may make investment decisions that are inconsistent with the recommendations expressed herein. In reviewing these materials, you should be aware that any or all of the foregoing, among other things, may give rise to real or potential conflicts of interest.

PL and its associates, their directors and employees may (a) from time to time, have a long or short position in, and buy or sell the securities of the subject company or (b) be engaged in any other transaction involving such securities and earn brokerage or other compensation or act as a market maker in the financial instruments of the subject company or act as an advisor or lender/borrower to the subject company or may have any other potential conflict of interests with respect to any recommendation and other related information and opinions.