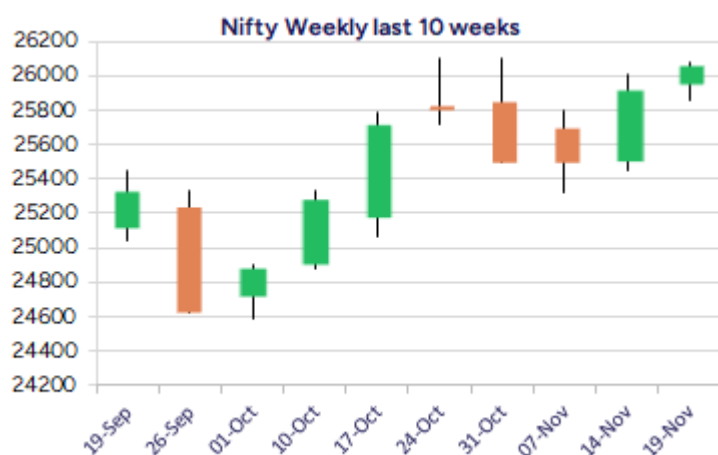
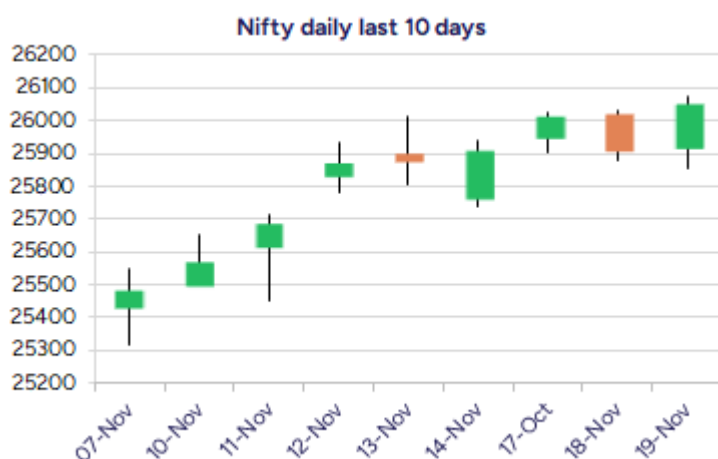


Date: 20<sup>th</sup> November 2025

\* Sensex 85186.47 + 513.45

\* Nifty 26052.65 + 142.60

\* Bank Nifty 59216.05 + 316.80



\*Blue candle → Close rate > Open rate \* Red candle → Close rate < Open rate

## Market Preview

### Nifty recovers to close above 26000 zone

Nifty witnessed a significant bounce back from the 25850 zone to close above the 26000 zone with bias and sentiment getting better to expect for further rise in the coming days. BankNifty regained strength after the short dip witnessed in the last session and making new a high has strengthened the overall trend to anticipate for further upward move in the coming days. However, the market breadth was slightly on the weaker side with the advance decline indicating a ratio of 5:6 at close.

## Market Forecast

### Nifty daily range 25900 - 26200

Nifty after taking a breather has once again indicated a strong recovery from 25850 zone to move past the important level of 26000 zone with sentiment once again maintained strong anticipating for fresh upward move in the coming sessions. As mentioned earlier, the index would have the important near-term support at 25700 level which needs to be sustained and with the undertone maintained strong we expect further gains having next higher targets of 26300 and 26700 levels anticipated in the coming days.

BankNifty after a slight halt to the ongoing uptrend near the 59100 zone, has once again resumed the strong upward move scaling new highs above the 59250 zone with bias getting stronger expecting for higher targets of 60500 and 63000 levels in the coming days. The index would have the important and major support positioned near the 50EMA at 57200 level, as mentioned earlier, and with most of the frontline banking stocks well poised for further gains, can pull the index to new highs in the coming days.

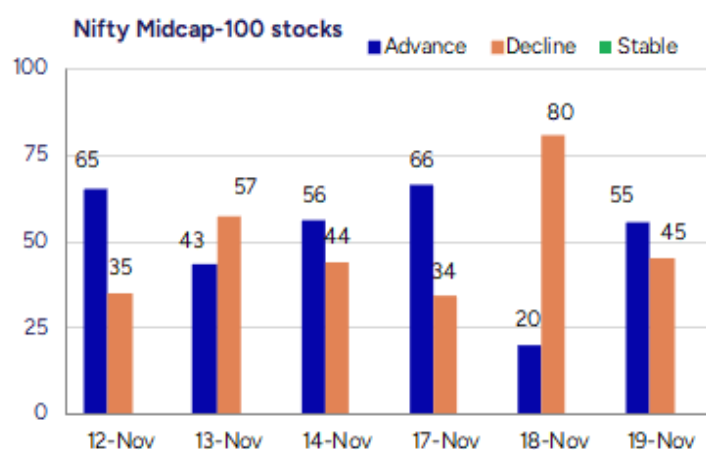
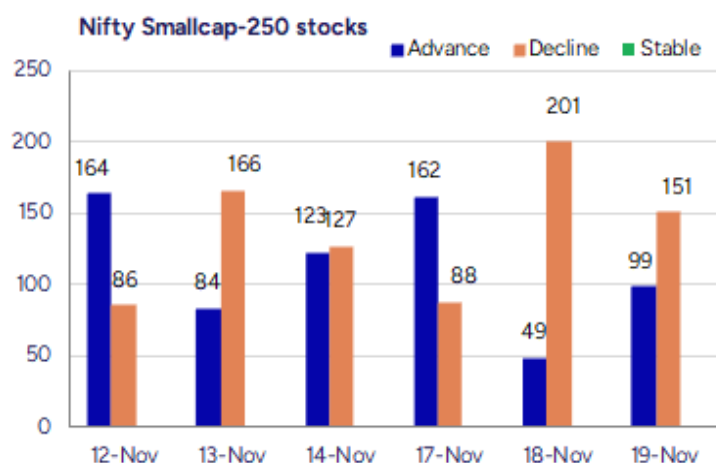
The support for the day is seen at 25900 levels, while the resistance is seen at 26200 levels. BankNifty would have the daily range of 58800-59800 levels.

Indices	Period	Closing	% Chng	Trend	Reversal	2 Sup	1 Sup	Pivot	1 Res	2 Res
Nifty	Daily	26052.65	0.55%	7	25993.80	25776	25914	25995	26133	26213
	Weekly	25910.05	1.64%	1	25734.65	25233	25572	25790	26129	26348
	Monthly	25722.10	4.51%	1	25438.50	23979	24851	25477	26349	26976
Bank Nifty	Daily	59216.05	0.54%	7	58983.00	58481	58848	59056	59424	59632
	Weekly	58517.55	1.11%	7	57918.60	57221	57869	58243	58891	59264
	Monthly	57776.35	5.75%	1	57492.70	52984	55380	56979	59375	60974
Sensex	Daily	85186.47	0.61%	7	84932.00	84272	84729	84983	85440	85694
	Weekly	84562.78	1.62%	1	83947.85	82412	83487	84203	85279	85995
	Monthly	83938.71	4.57%	1	83147.90	77999	80969	83130	86099	88260

**Gainers - Losers ( Nifty 500 Stocks )**

Gainers			
Company Name	Last Price	% Gain	Volume
Unihealth Hospi	265.65	19.99	670000
Securecloud Tec	23.55	19.97	768000
Rama Telecom	68.2	18.61	170000
Vdeal System	212.4	18	27600
Sawaliya Food	268.9	17.35	52200
Sambhaav Media	10.83	17.21	3555387
Venus Remedies	647	16.6	693961

Losers			
Company Name	Last Price	% Loss	Volume
Sammaan Capital	158.85	-13.08	56235414
Mangalam Drugs	54.38	-11.13	147732
Billionbrains G	169.89	-10	135397871
Physicswallah	140.05	-9.78	128435110
Amiable	60.15	-9.68	3200
Baweja Studios	42.2	-9.64	17600
Anand Rathi	700.5	-9.49	3099256



## Nifty Daily chart with RSI indicator



## BankNifty Daily chart with RSI indicator

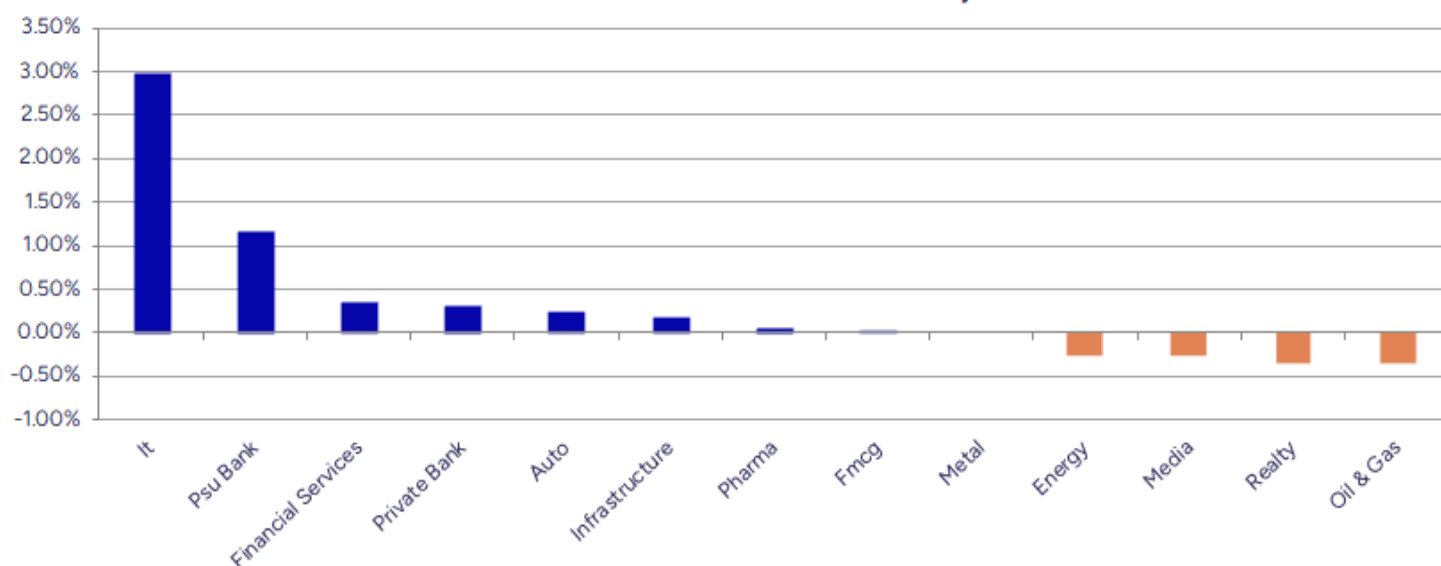


Breakouts - Cross above 200 DMA				Breakdown - Cross below 200 DMA			
Company Name	LCP	Change %	200 DMA	Company Name	LCP	Change %	200 DMA
Shubhshree Bio	418	6.80	391.4	Shanthala	32.1	-3.63	33.31
Kewal Kiran	529.25	3.94	509.19	Swaraj Engines	3781.8	-2.88	3893.93
Guj Raffia Ind	45.2	3.53	43.66	Mohit Ind	30.24	-2.48	31.01
KRN Heat Ex	864.2	3.16	837.71	Peninsula Land	31	-2.45	31.78
Bharat Rasayan	10462	2.43	10213.39	Modison	148.79	-2.00	151.82
Ritco Logistics	284.65	1.78	279.67	Campus	263.25	-1.97	268.55
Ipru Nifty IT	40.75	1.77	40.04	Sangani HOSP	67.25	-1.95	68.59
Bikewo Green	18.45	1.65	18.15	Sundram	960.75	-1.92	979.54
Mallcom (India)	1280	1.61	1259.73	NAVA	535.85	-1.85	545.97
Kotak Nifty IT	40.55	1.53	39.94	Dishman Carboge	243	-1.75	247.32
Nipp Nifty IT	40.67	1.45	40.09	Dolphin Offshor	366.95	-1.71	373.35
MA NIFITETF	38.73	1.44	38.18	Cool Caps	80.45	-1.45	81.63
SBI IT ETF	406.08	1.40	400.48	Ram Ratna Wires	611	-1.31	619.14
AXIS NI IT ETF	403.35	1.40	397.8	Cyient DLM	446.2	-1.19	451.57
HDFC Nifty IT	39.06	1.38	38.53	Orient Bell	278.3	-1.13	281.48
ABSL NiftyIT	39.67	1.30	39.16	Unicommerce Eso	128.99	-1.10	130.43
DSP Nifty IT	38.63	1.23	38.16	Cords Cable Ind	179.81	-1.06	181.74
UTI NIFITETF	383.9	1.23	379.24	Godrej Prop	2130.4	-0.87	2149.07

\* Stocks crossing above its Simple Moving Average (200DMA)

\* Stocks crossing below its Simple Moving Average (200DMA)

Sectoral Indices - Gainers Losers for the day



Stocks witnessing a volume surge as compared to their 5 day average volume

Watch out for the stocks that have seen a huge spurt in its share price over the last three days

Volume Shockers - NSE					
Company name	LCP	% Chg	Volume	Avg Vol *	% Chg
Atal	23.14	2.71	6351851	100889	6196
Sambhaav Media	10.83	17.21	3555387	115241	2985
Transwarranty	13.14	9.96	271063	8850	2963
Krishival Foods	455.95	4.49	35412	1200	2851
Nirman Agri	56.9	4.98	639300	22200	2780
AION-TECH	61.44	11.55	789222	29943	2536
Avanti Feeds	848.8	10.68	11329626	527348	2048
Jaiprakash Pow	20.29	15.02	362457783	2.3E+07	1489
L&T Technology	4440	8.97	1180228	88026	1241
Sapphire Foods	263.05	0.34	911342	68650	1228
Latent View	494.45	5.22	4011984	309425	1197
BEW Engineering	128	-2.22	13500	1125	1100
RB Denims	131.29	6.6	425893	36523	1066
Systango Tech	356.7	12.4	309600	28960	969
R M Drip & Spri	80.11	2.05	103587	9800	957
G R Infraprojec	1097	-0.16	297005	30802	864
UTKARSHBNK	16.83	0.3	9985085	1045115	855
Netweb	3330	2.16	1495959	163390	816
Mangalam Drugs	54.38	-11.13	147732	16675	786
Raghav Producti	1054.85	5.01	202092	23115	774

\* the Average Volume of last 5 days

Price Shockers - NSE				
Company name	LCP	Prv Close	% Chg	Volume
Unihealth Hospi	265.65	164.45	61.54	670000
Energy Dev	27.21	19.21	41.64	3789765
Securekloud Tec	23.55	18.63	26.41	768000
Pansari Develop	342.4	274.5	24.74	58166
Sylvan Plyboard	73	59.5	22.69	8000
Sambhaav Media	10.83	8.88	21.96	3555387
VLS Finance	255.88	210.26	21.7	157970
Premium Plast	37.25	31.6	17.88	39000
Rico Auto	116.37	98.81	17.77	9633648
Bannari A Spg	29.49	25.05	17.72	418538
Winny Immi	75	64	17.19	500
Bikewo Green	18.45	15.8	16.77	108000
Ahluwalia	1028.45	882.9	16.49	202446
Sri Adhikari	1135.7	981.1	15.76	270677
Allcargo	15.14	13.09	15.66	1307367
5paisa Capita	333.65	289.15	15.39	714486
Madhya Pradesh	45.55	39.5	15.32	4000
Maxvolt Energy	471	408.5	15.3	90400
SHUBHLAXMI	19.6	17	15.29	29000
Jaiprakash Pow	20.29	17.76	14.25	362457783

\* the % price rise of the last 3 days

Nifty 50 stocks - Summary Details											
Symbol	LTP	Chng	% Chng	Volume (lacs)	Turnover (crs.)	52w High	Diff with 52w H	52w Low	Diff with 52w L	365 days % chng	30 days % chng
NIFTY 50	26052.65	142.60	0.55%	2500.82	24495.30	26104.20	0.20%	21743.65	19.82%	0.78%	10.10%
ADANIENT	2431.00	-5.80	-0.24%	7.75	188.47	2810.49	13.50%	1966.02	23.65%	-4.42%	-13.80%
ADANIPTS	1484.00	-11.00	-0.74%	17.46	259.40	1523.60	2.60%	995.65	49.05%	1.05%	18.22%
APOLLOHOSP	7450.00	64.50	0.87%	4.55	337.51	8099.50	8.02%	6001.00	24.15%	-6.53%	7.65%
ASIANPAINT	2892.00	-14.00	-0.48%	13.88	402.85	2926.90	1.19%	2124.75	36.11%	15.88%	17.03%
AXISBANK	1270.10	4.70	0.37%	41.01	519.61	1276.10	0.47%	933.50	36.06%	5.43%	10.93%
BAJAJ-AUTO	8872.00	-49.00	-0.55%	3.26	291.06	9698.60	8.52%	7089.35	25.15%	-2.51%	-5.93%
BAJAJFINSV	2045.00	-5.20	-0.25%	7.05	144.07	2195.00	6.83%	1551.65	31.80%	-1.61%	25.03%
BAJFINANCE	1005.80	-7.80	-0.77%	51.58	519.97	1102.50	8.77%	645.10	55.91%	-5.28%	-84.52%
BEL	423.25	2.35	0.56%	96.58	406.10	436.00	2.92%	240.25	76.17%	1.96%	49.81%
BHARTIARTL	2160.00	10.80	0.50%	74.19	1597.13	2166.20	0.29%	1511.00	42.95%	6.82%	38.61%
CIPLA	1526.00	11.50	0.76%	11.71	178.04	1673.00	8.79%	1335.00	14.31%	-4.00%	0.98%
COALINDIA	379.30	-4.65	-1.21%	53.31	202.72	427.45	11.26%	349.25	8.60%	-1.25%	-6.30%
DRREDDY	1250.20	6.40	0.51%	8.30	103.35	1405.90	11.07%	1020.00	22.57%	-0.96%	1.39%
EICHERMOT	6898.00	83.50	1.23%	4.16	285.32	7122.50	3.15%	4646.00	48.47%	-3.24%	39.54%
ETERNAL	306.75	0.60	0.20%	155.30	475.80	368.45	16.75%	194.80	57.47%	-10.65%	#VALUE!
GRASIM	2743.00	-19.00	-0.69%	4.69	129.08	2977.80	7.89%	2276.95	20.47%	-2.62%	9.43%
HCLTECH	1662.00	66.80	4.19%	63.42	1046.72	2012.20	17.40%	1302.75	27.58%	7.33%	-14.19%
HDFCBANK	994.80	2.35	0.24%	198.13	1960.82	1020.50	2.52%	812.15	22.49%	-1.01%	-41.37%
HDFCLIFE	761.60	-0.20	-0.03%	9.51	72.20	820.75	7.21%	584.30	30.34%	2.12%	9.77%
HINDALCO	792.00	-5.15	-0.65%	30.05	238.38	864.00	8.33%	546.45	44.94%	3.15%	27.07%
HINDUNILVR	2443.70	39.70	1.65%	14.65	357.47	2750.00	11.14%	2136.00	14.41%	-7.67%	0.62%
ICICIBANK	1383.10	9.70	0.71%	103.94	1433.95	1500.00	7.79%	1186.00	16.62%	-4.40%	9.26%
INDIGO	5768.00	28.50	0.50%	7.84	448.74	6232.50	7.45%	3907.05	47.63%	-1.86%	47.50%
INFY	1542.00	55.60	3.74%	109.81	1681.67	2006.45	23.15%	1307.00	17.98%	3.14%	-20.28%
ITC	403.70	-2.15	-0.53%	78.82	318.18	491.00	17.78%	390.15	3.47%	-1.53%	-12.90%
JIOFIN	304.65	-1.30	-0.42%	58.79	179.15	347.35	12.29%	198.65	53.36%	-1.08%	-3.90%
JSWSTEEL	1168.40	5.40	0.46%	5.22	60.84	1223.90	4.53%	880.00	32.77%	-0.03%	23.85%
KOTAKBANK	2108.10	15.00	0.72%	24.93	524.21	2301.90	8.42%	1699.70	24.03%	-5.11%	22.55%
LT	4018.40	18.80	0.47%	9.23	370.23	4062.60	1.09%	2965.30	35.51%	4.17%	13.42%
M&M	3718.00	23.20	0.63%	16.26	604.76	3781.00	1.67%	2425.00	53.32%	1.31%	31.62%
MARUTI	15740.00	-190.00	-1.19%	2.86	452.55	16660.00	5.52%	10725.00	46.76%	-2.87%	44.74%
MAXHEALTH	1164.70	48.00	4.30%	59.64	688.16	1314.30	11.38%	936.25	24.40%	-7.15%	10.98%
NESTLEIND	1279.90	14.80	1.17%	7.26	92.56	1311.60	2.42%	1055.00	21.32%	-1.89%	-42.04%
NTPC	326.10	-2.35	-0.72%	69.35	226.26	380.00	14.18%	292.80	11.37%	-3.68%	-11.83%
ONGC	248.75	1.80	0.73%	70.73	175.67	273.50	9.05%	205.00	21.34%	-0.30%	-1.54%
POWERGRID	275.20	1.00	0.36%	157.65	432.77	345.40	20.32%	247.30	11.28%	-5.37%	-12.14%
RELIANCE	1519.00	-0.40	-0.03%	56.92	864.45	1551.00	2.06%	1114.85	36.25%	7.24%	19.86%
SBILIFE	2000.20	6.90	0.35%	8.94	179.09	2017.90	0.88%	1372.55	45.73%	8.09%	27.59%
SBIN	980.50	8.05	0.83%	82.91	811.93	984.45	0.40%	680.00	44.19%	9.37%	20.91%
SHRIRAMFIN	816.00	-4.20	-0.51%	37.12	304.73	838.65	2.70%	493.35	65.40%	21.42%	-70.94%
SUNPHARMA	1786.50	27.70	1.57%	21.31	379.46	1910.00	6.47%	1548.00	15.41%	4.75%	-0.53%
TATACONSUM	1163.50	9.40	0.81%	19.35	223.88	1202.80	3.27%	882.90	31.78%	-1.02%	24.77%
TMPV	361.00	-10.30	-2.77%	178.50	649.45	820.35	55.99%	360.35	0.18%	#VALUE!	#VALUE!
TATASTEEL	173.20	0.75	0.43%	196.19	339.40	186.94	7.35%	122.62	41.25%	0.13%	24.98%
TCS	3147.00	59.90	1.94%	31.51	988.32	4494.90	29.99%	2866.60	9.78%	4.22%	-25.54%
TECHM	1436.90	14.90	1.05%	57.77	829.34	1807.70	20.51%	1209.40	18.81%	-1.77%	-15.73%
TITAN	3934.80	55.60	1.43%	15.78	617.62	3940.50	0.14%	2925.00	34.52%	5.56%	21.85%
TRENT	4352.20	-21.80	-0.50%	5.94	258.82	7493.05	41.92%	4262.60	2.10%	-9.15%	-32.32%
ULTRACEMCO	11681.00	-26.00	-0.22%	2.71	317.04	13097.00	10.81%	10047.85	16.25%	-5.36%	9.12%
WIPRO	246.06	5.16	2.14%	132.98	326.01	324.60	24.20%	228.00	7.92%	#VALUE!	-57.49%

## Disclaimer / Disclosures

### ANALYST CERTIFICATION

I, Mrs. Vaishali Parekh B.com, Research Analyst, author and the name subscribed to this report, hereby certify that all of the views expressed in this research report accurately reflect our views about the subject issuer(s) or securities. We also certify that no part of our compensation was, is, or will be directly or indirectly related to the specific recommendation(s) or view(s) in this report.

Terms & conditions and other disclosures:

Prabhudas Lilladher Pvt. Ltd, Mumbai, India (hereinafter referred to as "PL") is engaged in the business of Stock Broking, Portfolio Manager, Depository Participant and distribution for third party financial products. PL is a subsidiary of Prabhudas Lilladher Advisory Services Pvt Ltd. which has its various subsidiaries engaged in business of commodity broking, investment banking, financial services (margin funding) and distribution of third party financial/other products, details in respect of which are available at [www.plindia.com](http://www.plindia.com)

This document has been prepared by the Research Division of PL and is meant for use by the recipient only as information and is not for circulation. This document is not to be reported or copied or made available to others without prior permission of PL. It should not be considered or taken as an offer to sell or a solicitation to buy or sell any security.

The information contained in this report has been obtained from sources that are considered to be reliable. However, PL has not independently verified the accuracy or completeness of the same. Neither PL nor any of its affiliates, its directors or its employees accepts any responsibility of whatsoever nature for the information, statements and opinion given, made available or expressed herein or for any omission therein.

Recipients of this report should be aware that past performance is not necessarily a guide to future performance and value of investments can go down as well. The suitability or otherwise of any investments will depend upon the recipient's particular circumstances and, in case of doubt, advice should be sought from an independent expert/advisor.

Either PL or its affiliates or its directors or its employees or its representatives or its clients or their relatives may have position(s), make market, act as principal or engage in transactions of securities of companies referred to in this report and they may have used the research material prior to publication.

PL may from time to time solicit or perform investment banking or other services for any company mentioned in this document.

PL is registered as Research Analyst under Securities and Exchange Board of India (Research Analysts) Regulations, 2014 PL submits that no material disciplinary action has been taken on us by any Regulatory Authority impacting Equity Research Analysis activities.

PL or its research analysts or its associates or his relatives do not have any financial interest in the subject company.

PL or its research analysts or its associates or his relatives do not have actual/beneficial ownership of one per cent or more securities of the subject company at the end of the month immediately preceding the date of publication of the research report.

PL or its research analysts or its associates or his relatives do not have any material conflict of interest at the time of publication of the research report.

PL or its associates might have received compensation from the subject company in the past twelve months.

PL or its associates might have managed or co-managed public offering of securities for the subject company in the past twelve months or mandated by the subject company for any other assignment in the past twelve months.

PL or its associates might have received any compensation for investment banking or merchant banking or brokerage services from the subject company in the past twelve months.

PL or its associates might have received any compensation for products or services other than investment banking or merchant banking or brokerage services from the subject company in the past twelve months PL or its associates might have received any compensation or other benefits from the subject company or third party in connection with the research report.

PL encourages independence in research report preparation and strives to minimize conflict in preparation of research report. PL or its analysts did not receive any compensation or other benefits from the subject Company or third party in connection with the preparation of the research report. PL or its Research Analysts do not have any material conflict of interest at the time of publication of this report.

It is confirmed that Mrs.Vaishali Parekh B.com, Research Analyst of this report has not received any compensation from the companies mentioned in the report in the preceding twelve months compensation of our Research Analysts is not based on any specific merchant banking, investment banking or brokerage service transactions.

The Research analysts for this report certifies that all of the views expressed in this report accurately reflect his or her personal views about the subject company or companies and its or their securities, and no part of his or her compensation was, is or will be, directly or indirectly related to specific recommendations or views expressed in this report.

The research analysts for this report has not served as an officer, director or employee of the subject company PL or its research analysts have not engaged in market making activity for the subject company

Our sales people, traders, and other professionals or affiliates may provide oral or written market commentary or trading strategies to our clients that reflect opinions that are contrary to the opinions expressed herein, and our proprietary trading and investing businesses may make investment decisions that are inconsistent with the recommendations expressed herein. In reviewing these materials, you should be aware that any or all of the foregoing, among other things, may give rise to real or potential conflicts of interest.

PL and its associates, their directors and employees may (a) from time to time, have a long or short position in, and buy or sell the securities of the subject company or (b) be engaged in any other transaction involving such securities and earn brokerage or other compensation or act as a market maker in the financial instruments of the subject company or act as an advisor or lender/borrower to the subject company or may have any other potential conflict of interests with respect to any recommendation and other related information and opinions.