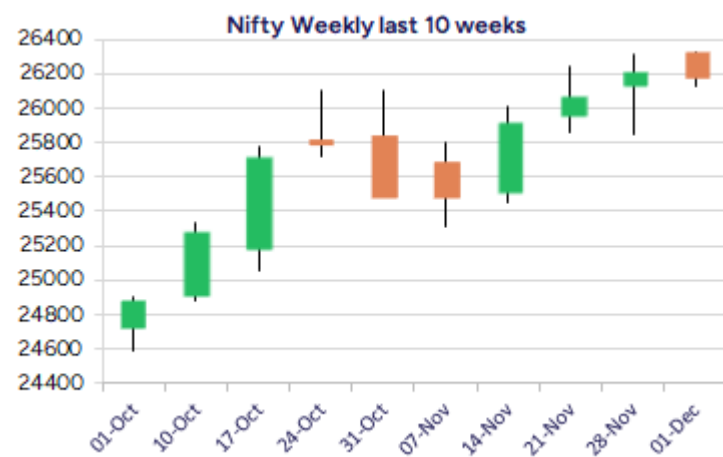
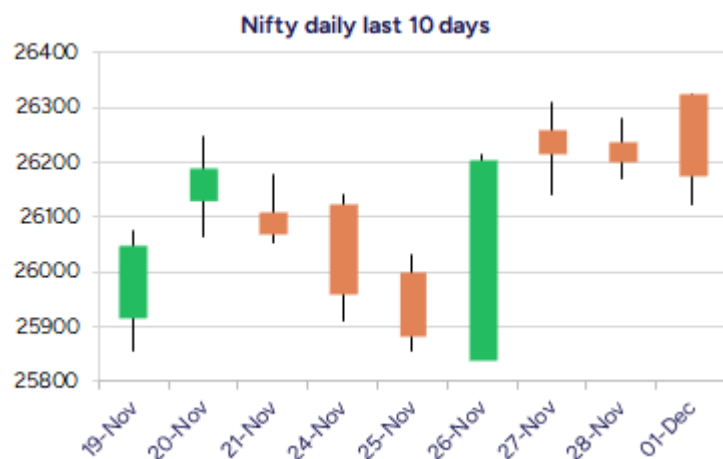


Date: 02nd December 2025

* Sensex 85641.90 - 64.77

* Nifty 26175.75 - 27.20

* Bank Nifty 59681.35 - 71.35



*Blue candle → Close rate > Open rate * Red candle → Close rate < Open rate

Market Preview

Nifty erases gains post opening session

Nifty opened with a gap up on a positive note but fizzled out gradually as the day progressed finding resistance near the 26300 zone and ended with a marginal loss near 26200 level. BankNifty once again hit record high near 60100 zone but slipped with profit booking witnessed to close on a flat note near 59700 zone. The market breadth was slightly on the weaker side with the advance decline indicating a ratio of 5:6 at close.

Market Forecast

Nifty daily range 26100 - 26400

Nifty once again after witnessing a positive opening session found resistance near the 26300 zone and fizzled out gradually as the day progressed and closed near the 26200 zone with bias maintained intact having the important support near the 25750-25800 band which needs to be sustained. With a revival expected, the index can carry on with the positive move with 26000 level positioned as the near-term support and, on the upside, can have fresh targets of 26500 and 27200 levels in the coming days.

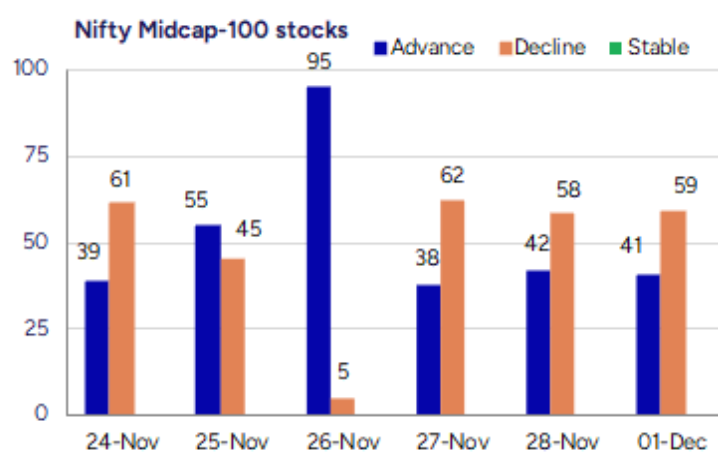
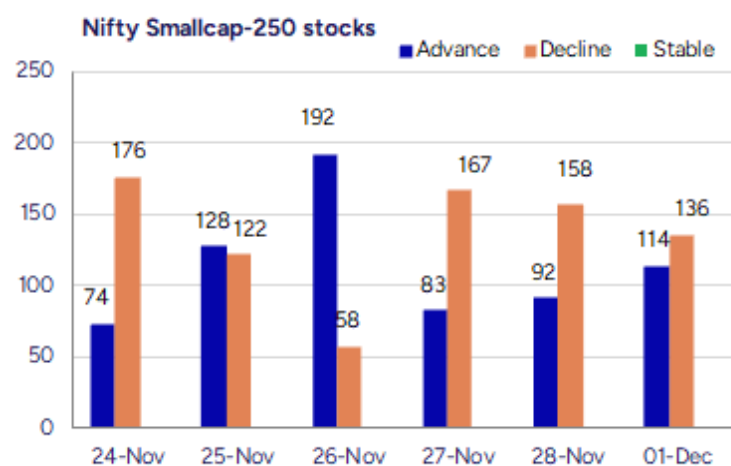
BankNifty after making a new record high at 60100 zone in the opening session, witnessed profit booking and eroded the gains to end up near the 59700 level with the overall trend maintained strong. The index would have the near-term support positioned near the 58700 zone, and with the undertone going strong, can expect for fresh higher targets of 61400 and 63500 levels in the coming days, once a revival is established to confirm for another round of fresh upward move in the coming days.

The support for the day is seen at 26100 levels, while the resistance is seen at 26400 levels. BankNifty would have the daily range of 59300-60300 levels.

Indices	Period	Closing	% Chng	Trend	Reversal	2 Sup	1 Sup	Pivot	1 Res	2 Res
Nifty	Daily	26175.75	-0.10%	4	26154.80	26007	26091	26209	26293	26410
	Weekly	26202.95	0.52%	3	26026.00	25652	25927	26119	26394	26585
	Monthly	26202.95	1.87%	2	25767.20	24953	25578	25944	26569	26935
Bank Nifty	Daily	59681.35	-0.12%	4	59564.60	59188	59435	59774	60021	60361
	Weekly	59752.70	1.50%	9	59057.30	58215	58984	59439	60208	60663
	Monthly	59752.70	3.42%	2	58620.10	56200	57976	58935	60712	61671
Sensex	Daily	85641.90	-0.08%	4	85542.85	85094	85368	85764	86037	86433
	Weekly	85706.67	0.56%	3	85027.35	83871	84789	85421	86339	86972
	Monthly	85706.67	2.11%	2	84235.40	81429	83568	84811	86950	88193

Gainers - Losers (Nifty 500 Stocks)

Gainers				Losers			
Company Name	Last Price	% Gain	Volume	Company Name	Last Price	% Loss	Volume
Wockhardt	1472.2	19.21%	13192223	Whirlpool	990.30	-7.63%	3819340
ZFCVINDIA	14,827.00	12.29%	240883	Welspun Living	142	-4.58%	14672701
JM Financial	154.58	6.35%	61803708	Neuland Lab	16,587.00	-4.05%	45088
IEX	146.70	5.32%	32323758	KPR Mill	1,043.10	-3.37%	255705
JSW Holdings	21,125.00	4.43%	11705	Max Healthcare	1,125.40	-3.22%	3436348
City Union Bank	282.95	4.38%	5449422	Latent View	483.4	-3.00%	473428
Tejas Networks	513.55	3.92%	5382197	GlaxoSmithKline	2495.4	-2.88%	90045



Nifty Daily chart with RSI indicator



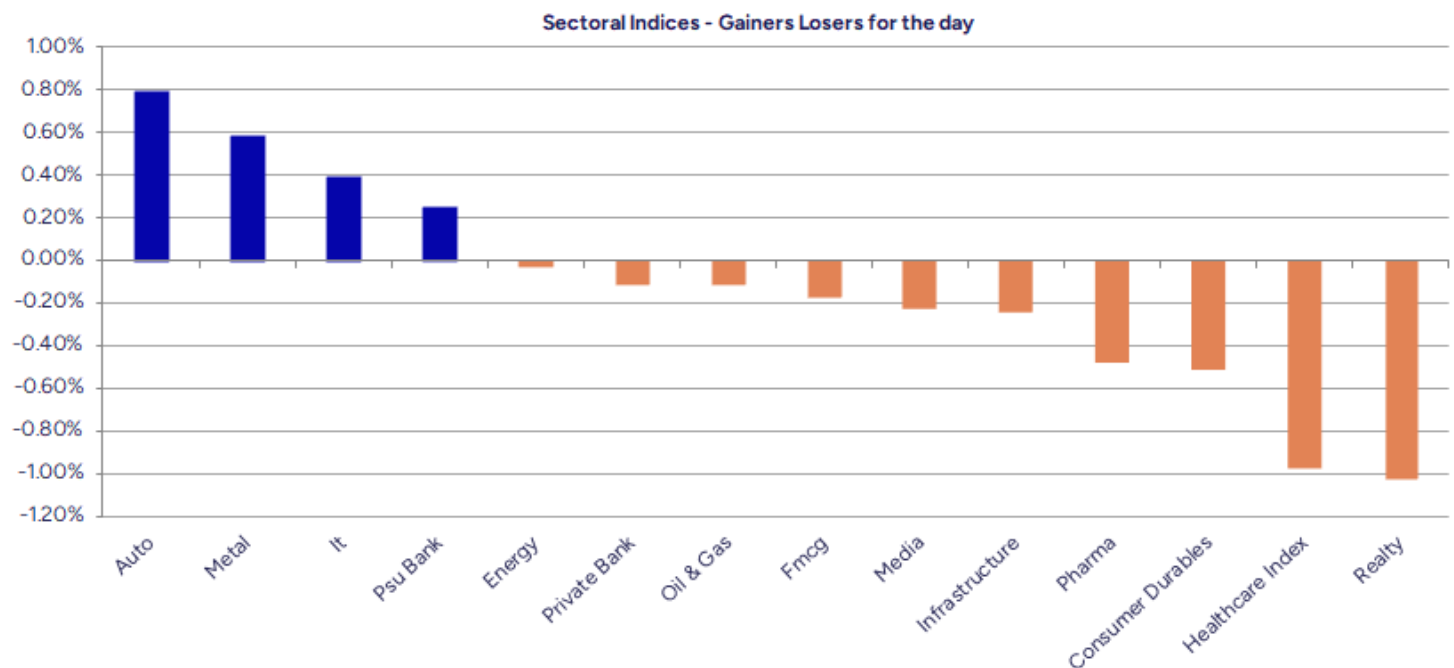
sBankNifty Daily chart with RSI indicator



Breakouts - Cross above 200 DMA				Breakdown - Cross below 200 DMA			
Company Name	LCP	Change %	200 DMA	Company Name	LCP	Change %	200 DMA
WE WIN	50.9	4.00	48.94	Kiri Industries	548.1	-5.59	580.57
Varvee Global	156.66	3.34	151.59	Jay Jalaram	163	-4.55	170.77
Eldeco Housing	809.1	3.12	784.61	Energy-Mission	192.05	-3.73	199.5
Chola Fin Hold	1900.8	2.78	1849.44	Sadhav Shipping	102.95	-3.22	106.37
Nagreeka Cap	28.8	2.35	28.14	Dilip Buildcon	464.95	-2.55	477.11
Swiggy	388.65	2.25	380.1	Max Healthcare	1125.4	-2.41	1153.23
Manorama Indust	1342.2	2.22	1313	Atul Auto	463.55	-1.70	471.58
Sharda Motor	972.6	1.86	954.81	GFL	59.93	-1.61	60.91
Xtglobal	36.43	1.36	35.94	Barak Vally Cem	41.84	-1.60	42.52
Coral India Fin	43.33	1.29	42.78	Bang Overseas	52.03	-1.50	52.82
Procter&Gamble	5822.5	1.15	5756.49	Medicamen Bio	401.55	-1.34	407
Wockhardt	1472.2	1.14	1455.58	Mallcom (India)	1237.3	-1.32	1253.91
Chalet Hotels	897.1	1.01	888.09	Ruby Mills	216.1	-1.30	218.94
Thomas Scott	351.7	0.89	348.61	Gland	1727.4	-1.10	1746.54
Pelatro	378.2	0.67	375.68	CARE Ratings	1494	-1.09	1510.39
Veedol Corp	1649.3	0.66	1638.46	Ind Motor Parts	1029.6	-0.96	1039.61
United Heat	69.8	0.55	69.42	Vascon Engineer	50.28	-0.89	50.73
Paradeep Phosph	159.66	0.41	159.01	Cello World	586.25	-0.83	591.13

* Stocks crossing above its Simple Moving Average (200DMA)

* Stocks crossing below its Simple Moving Average (200DMA)



Stocks witnessing a volume surge as compared to their 5 day average volur

Watch out for the stocks that have seen a huge spurt in its share price over the last three days

Volume Shockers - NSE					
Company name	LCP	% Chg	Volume	Avg Vol *	% Chg
Salzer Electro	734.8	2.81	252922	3058	8170
Sigachi	37.07	-3.08	4603482	110337	4072
Tata Chemicals	795.75	-0.59	1058440	29371	3504
Nazara	244.8	-4.15	564241	19281	2826
Vesuvius India	480.95	0.63	43009	1751	2356
Wockhardt	1470.9	19.24	529201	24821	2032
Sonalis Consume	76.2	-11.4	94000	5600	1579
Take Solutions	32.5	4.91	387124	28955	1237
Mankind Pharma	2235.4	-0.73	266686	23200	1050
Sterling Wilson	229.25	1.46	396149	40859	870
Sigma Solve	52.35	-1.47	13173	1373	859
Silver Touch Te	779.55	-0.33	41528	6570	532
Snowman Logist	43.3	0.05	125581	19921	530
Varroc Engineer	669	1.19	96024	15543	518
TVS Motor	3662.5	3.67	90566	14765	513
Max Healthcare	1132.8	-2.6	144665	24814	483
CAMS	3907.1	0.86	102337	17654	480
Syrma SGS	812.45	-1.01	89324	15973	459
Typhoon Fin.	52.45	4.65	12145	2220	447
Craftsman	7057	0.4	5951	1098	442
South West Pinn	224.35	5.9	184732	35823	416

Price Shockers - NSE				
Company name	LCP	Prv Close	% Chg	Volume
Bandaram Pharma	47.52	39.6	20	57979
Wockhardt	1470.9	1233.55	19.24	529201
Welspun Invest	1441.05	1223	17.83	4427
Hariom Pipe	392.5	343.6	14.23	1649909
Parmeshwar Meta	92.65	81.18	14.13	144000
India Finsec	187.6	165.8	13.15	223
Diamines Chem	286.75	255.05	12.43	20051
Aditya Consumer	44.2	40.04	10.39	4000
Amarnath Sec	12	10.9	10.09	54203

Nifty 50 Stocks - Summary Details											
Symbol	LTP	Chng	% Chng	Volume (lacs)	Turnover (crs.)	52w High	Diff with 52w H	52w Low	Diff with 52w L	365 days % chng	30 days % chng
NIFTY 50	26175.75	-27.20	-0.10%	2138.29	21735	26326	0.57%	21744	20.38%	1.03%	7.94%
ADANIENT	2259.90	-20.30	-0.89%	13.13	299	2617	13.63%	1968	14.86%	-8.83%	-8.17%
ADANIPTS	1531.50	14.60	0.96%	40.59	624	1549	1.13%	1011	51.52%	5.44%	28.61%
APOLLOHOSP	7285.00	-50.50	-0.69%	2.28	167	8100	10.06%	6001	21.40%	-5.12%	6.72%
ASIANPAINT	2864.00	-10.40	-0.36%	4.99	143	2927	2.15%	2125	34.79%	14.21%	15.65%
AXISBANK	1276.00	-3.70	-0.29%	40.98	523	1304	2.15%	934	36.69%	3.48%	12.27%
BAJAJ-AUTO	9090.00	16.50	0.18%	4.50	410	9490	4.21%	7089	28.22%	2.29%	0.69%
BAJAJFINSV	2082.00	-12.00	-0.57%	5.34	111	2195	5.15%	1552	34.18%	-0.31%	31.76%
BAJFINANCE	1019.80	-17.70	-1.71%	64.60	662	1103	7.50%	649	57.11%	-2.08%	-84.47%
BEL	417.00	5.25	1.28%	96.50	402	436	4.36%	240	73.57%	-2.08%	35.47%
BHARTIARTL	2090.50	-11.10	-0.53%	50.59	1060	2175	3.86%	1551	34.77%	1.71%	28.43%
CIPLA	1523.00	-8.30	-0.54%	10.11	154	1673	8.97%	1335	14.08%	1.45%	-0.70%
COALINDIA	379.85	3.70	0.98%	42.17	160	426	10.81%	349	8.76%	-2.32%	-8.83%
DRREDDY	1259.80	1.00	0.08%	14.58	184	1406	10.39%	1020	23.51%	5.22%	4.81%
EICHERMOT	7135.00	81.50	1.16%	9.75	696	7285	2.05%	4646	53.57%	1.69%	47.47%
ETERNAL	302.20	2.10	0.70%	179.30	542	368	17.98%	195	55.13%	-5.11%	#VALUE!
GRASIM	2727.00	-12.40	-0.45%	2.88	79	2978	8.42%	2277	19.77%	-5.54%	4.81%
HCLTECH	1642.50	18.30	1.13%	20.34	334	2012	18.37%	1303	26.08%	6.58%	-11.10%
HDFCBANK	1002.90	-4.70	-0.47%	167.47	1684	1021	1.72%	812	23.49%	1.50%	-44.21%
HDFCLIFE	765.00	0.70	0.09%	9.09	69	821	6.79%	584	30.93%	4.77%	16.57%
HINDALCO	811.80	3.40	0.42%	20.65	168	864	6.04%	546	48.56%	-4.37%	23.56%
HINDUNILVR	2458.90	-7.70	-0.31%	19.25	476	2750	10.59%	2136	15.12%	-0.04%	-1.27%
ICICIBANK	1390.20	1.40	0.10%	88.68	1235	1500	7.32%	1186	17.22%	3.33%	6.92%
INDIGO	5772.50	-129.00	-2.19%	5.86	341	6233	7.38%	3945	46.32%	3.00%	32.32%
INFY	1563.50	3.40	0.22%	53.42	836	2006	22.08%	1307	19.63%	5.51%	-15.82%
ITC	404.05	-0.20	-0.05%	134.43	541	491	17.71%	390	3.56%	-3.83%	-15.21%
JIOFIN	305.05	-1.15	-0.38%	62.25	190	347	12.18%	199	53.56%	-0.67%	-7.19%
JSWSTEEL	1165.00	4.70	0.41%	30.39	355	1224	4.81%	880	32.39%	-3.12%	20.95%
KOTAKBANK	2148.80	24.40	1.15%	32.62	702	2302	6.65%	1724	24.66%	2.16%	21.66%
LT	4067.00	-2.60	-0.06%	12.52	510	4140	1.76%	2965	37.15%	1.05%	9.35%
M&M	3733.00	-24.30	-0.65%	18.30	687	3795	1.63%	2425	53.94%	7.30%	26.15%
MARUTI	16125.00	225.00	1.42%	4.34	696	16660	3.21%	10725	50.35%	-0.55%	45.36%
MAXHEALTH	1131.80	-31.00	-2.67%	34.36	391	1314	13.89%	940	20.40%	-1.95%	14.87%
NESTLEIND	1257.00	-4.10	-0.33%	6.45	81	1312	4.16%	1055	19.15%	-0.87%	-43.59%
NTPC	327.95	1.50	0.46%	69.36	227	375	12.58%	293	12.00%	-2.92%	-10.05%
ONGC	244.80	1.55	0.64%	63.08	154	274	10.49%	205	19.41%	-4.13%	-4.62%
POWERGRID	269.90	-0.05	-0.02%	104.29	282	342	21.02%	247	9.14%	-6.42%	-18.14%
RELIANCE	1566.50	-1.00	-0.06%	89.20	1402	1581	0.94%	1115	40.51%	5.36%	21.20%
SBILIFE	1974.00	8.00	0.41%	4.84	95	2087	5.40%	1373	43.82%	0.81%	37.13%
SBIN	972.60	-6.40	-0.65%	88.08	862	999	2.64%	680	43.03%	3.85%	15.99%
SHRIRAMFIN	851.95	0.30	0.04%	63.31	541	872	2.30%	493	72.69%	13.71%	-71.80%
SUNPHARMA	1809.00	-22.60	-1.23%	18.69	339	1910	5.29%	1548	16.86%	6.90%	1.49%
TATACONSUM	1162.50	-9.90	-0.84%	4.87	57	1203	3.35%	883	31.67%	-0.10%	21.40%
TATASTEEL	168.60	0.64	0.38%	117.58	198	187	9.81%	123	37.50%	-7.77%	16.67%
TCS	3138.00	0.50	0.02%	17.48	548	4495	30.19%	2867	9.47%	2.47%	-26.63%
TECHM	1528.40	11.10	0.73%	15.27	233	1808	15.45%	1209	26.38%	7.38%	-10.68%
TITAN	3888.00	-19.70	-0.50%	6.03	234	3956	1.72%	2925	32.92%	3.96%	19.88%
TMPV	363.50	6.70	1.88%	127.14	460	820	55.69%	352	3.27%	-11.27%	#VALUE!
TRENT	4218.00	-32.40	-0.76%	5.43	230	7493	43.71%	4200	0.43%	-10.19%	-37.96%
ULTRACEMCO	12013.00	413.00	3.56%	2.29	266	13097	8.28%	10048	19.56%	-2.39%	4.11%
WIPRO	250.10	0.57	0.23%	38.65	97	325	22.95%	228	9.69%	3.99%	-56.69%

Disclaimer / Disclosures

ANALYST CERTIFICATION

I, Mrs. Vaishali Parekh B.com, Research Analyst, author and the name subscribed to this report, hereby certify that all of the views expressed in this research report accurately reflect our views about the subject issuer(s) or securities. We also certify that no part of our compensation was, is, or will be directly or indirectly related to the specific recommendation(s) or view(s) in this report.

Terms & conditions and other disclosures:

Prabhudas Lilladher Pvt. Ltd, Mumbai, India (hereinafter referred to as "PL") is engaged in the business of Stock Broking, Portfolio Manager, Depository Participant and distribution for third party financial products. PL is a subsidiary of Prabhudas Lilladher Advisory Services Pvt Ltd. which has its various subsidiaries engaged in business of commodity broking, investment banking, financial services (margin funding) and distribution of third party financial/other products, details in respect of which are available at www.plindia.com

This document has been prepared by the Research Division of PL and is meant for use by the recipient only as information and is not for circulation. This document is not to be reported or copied or made available to others without prior permission of PL. It should not be considered or taken as an offer to sell or a solicitation to buy or sell any security.

The information contained in this report has been obtained from sources that are considered to be reliable. However, PL has not independently verified the accuracy or completeness of the same. Neither PL nor any of its affiliates, its directors or its employees accepts any responsibility of whatsoever nature for the information, statements and opinion given, made available or expressed herein or for any omission therein.

Recipients of this report should be aware that past performance is not necessarily a guide to future performance and value of investments can go down as well. The suitability or otherwise of any investments will depend upon the recipient's particular circumstances and, in case of doubt, advice should be sought from an independent expert/advisor.

Either PL or its affiliates or its directors or its employees or its representatives or its clients or their relatives may have position(s), make market, act as principal or engage in transactions of securities of companies referred to in this report and they may have used the research material prior to publication.

PL may from time to time solicit or perform investment banking or other services for any company mentioned in this document.

PL is registered as Research Analyst under Securities and Exchange Board of India (Research Analysts) Regulations, 2014 PL submits that no material disciplinary action has been taken on us by any Regulatory Authority impacting Equity Research Analysis activities.

PL or its research analysts or its associates or his relatives do not have any financial interest in the subject company.

PL or its research analysts or its associates or his relatives do not have actual/beneficial ownership of one per cent or more securities of the subject company at the end of the month immediately preceding the date of publication of the research report.

PL or its research analysts or its associates or his relatives do not have any material conflict of interest at the time of publication of the research report.

PL or its associates might have received compensation from the subject company in the past twelve months.

PL or its associates might have managed or co-managed public offering of securities for the subject company in the past twelve months or mandated by the subject company for any other assignment in the past twelve months.

PL or its associates might have received any compensation for investment banking or merchant banking or brokerage services from the subject company in the past twelve months.

PL or its associates might have received any compensation for products or services other than investment banking or merchant banking or brokerage services from the subject company in the past twelve months PL or its associates might have received any compensation or other benefits from the subject company or third party in connection with the research report.

PL encourages independence in research report preparation and strives to minimize conflict in preparation of research report. PL or its analysts did not receive any compensation or other benefits from the subject Company or third party in connection with the preparation of the research report. PL or its Research Analysts do not have any material conflict of interest at the time of publication of this report.

It is confirmed that Mrs.Vaishali Parekh B.com, Research Analyst of this report has not received any compensation from the companies mentioned in the report in the preceding twelve months compensation of our Research Analysts is not based on any specific merchant banking, investment banking or brokerage service transactions.

The Research analysts for this report certifies that all of the views expressed in this report accurately reflect his or her personal views about the subject company or companies and its or their securities, and no part of his or her compensation was, is or will be, directly or indirectly related to specific recommendations or views expressed in this report.

The research analysts for this report has not served as an officer, director or employee of the subject company PL or its research analysts have not engaged in market making activity for the subject company

Our sales people, traders, and other professionals or affiliates may provide oral or written market commentary or trading strategies to our clients that reflect opinions that are contrary to the opinions expressed herein, and our proprietary trading and investing businesses may make investment decisions that are inconsistent with the recommendations expressed herein. In reviewing these materials, you should be aware that any or all of the foregoing, among other things, may give rise to real or potential conflicts of interest.

PL and its associates, their directors and employees may (a) from time to time, have a long or short position in, and buy or sell the securities of the subject company or (b) be engaged in any other transaction involving such securities and earn brokerage or other compensation or act as a market maker in the financial instruments of the subject company or act as an advisor or lender/borrower to the subject company or may have any other potential conflict of interests with respect to any recommendation and other related information and opinions.