

Date: 03rd December 2025

* Sensex 85138.27 - 503.63

* Nifty 26032.20 - 143.55

* Bank Nifty 59273.80 - 407.55

Market Preview

Nifty slips; ends near 26000 zone

Nifty opened with a gap down extending the losses and witnessed a gradual slide as the day progressed with bias turning little bit cautious. BankNifty plunged with profit booking seen after finding resistance near the 60100 zone with the bias maintained with a cautiously positive approach as of now. The market breadth was negative with the advance decline indicating a ratio of 1:2 at close.

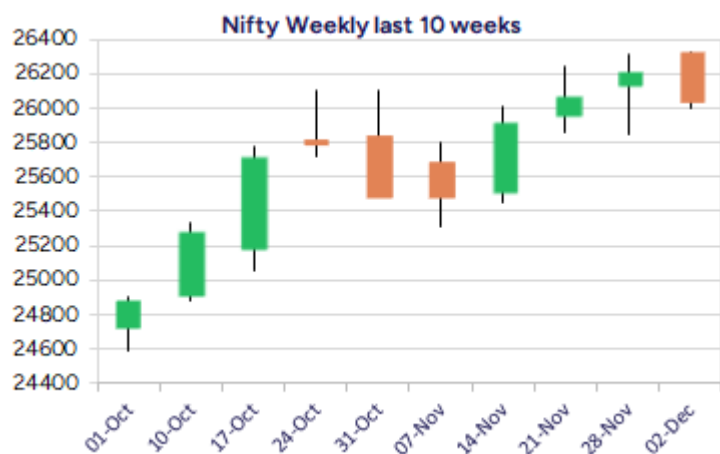
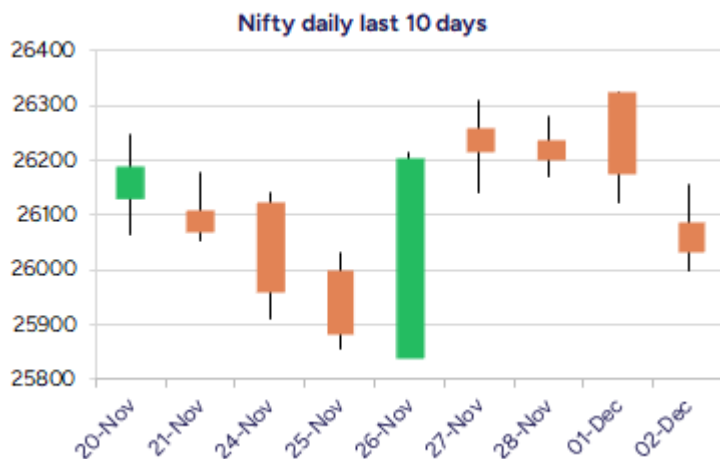
Market Forecast

Nifty daily range 25900 - 26200

Nifty witnessed heavy profit booking as the day progressed to extend the losses and closed near the 26000 zone with bias slightly maintained with a cautious approach as of now with 26300 level now acting as the resistance zone with 25800 level positioned as the near-term support which needs to be sustained to maintain the overall trend intact. Once a stability is established near the 25800 zone we can expect for further upward move to carry on with the positive trend further ahead.

BankNifty after peaking out near the 60100 level, has witnessed profit booking to erase the gains and has dragged down to close near the 59300 level with bias little bit turning cautious expecting for extended slide in the coming sessions. As mentioned earlier, the index would have the near-term support positioned near the 58700 zone which needs to be sustained and once a revival is established, we can expect for further upward in the coming days.

The support for the day is seen at 25900 levels, while the resistance is seen at 26200 levels. BankNifty would have the daily range of 58800-59800 levels.

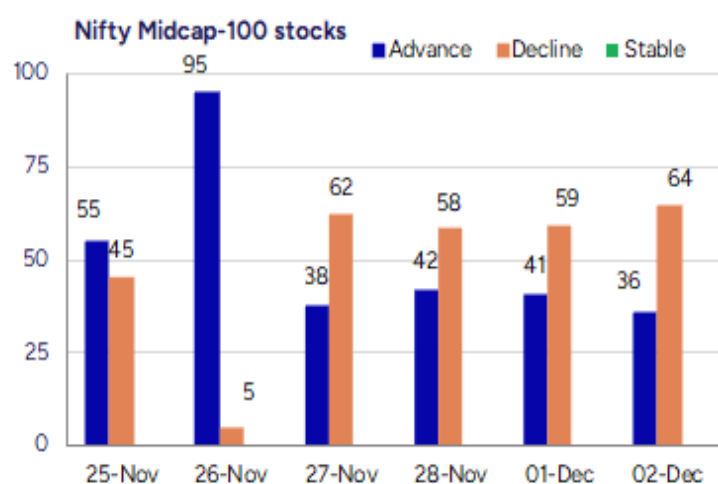
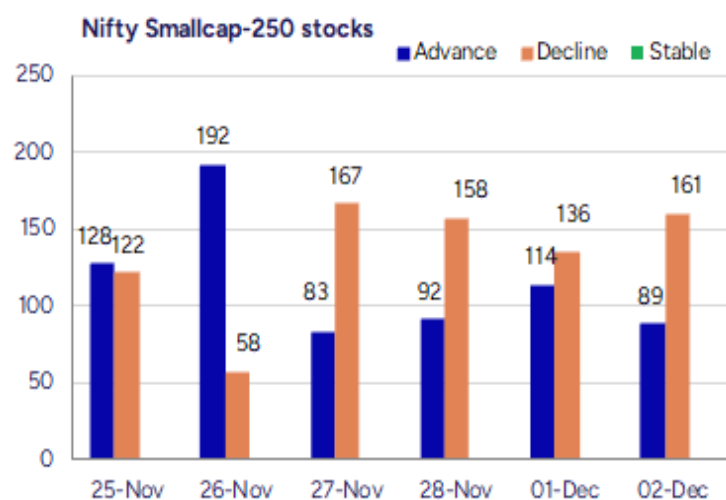


*Blue candle → Close rate > Open rate * Red candle → Close rate < Open rate

Indices	Period	Closing	% Chng	Trend	Reversal	2 Sup	1 Sup	Pivot	1 Res	2 Res
Nifty	Daily	26032.20	-0.55%	-1	26176.20	25905	25969	26062	26125	26218
	Weekly	26202.95	0.52%	3	26026.00	25652	25927	26119	26394	26585
	Monthly	26202.95	1.87%	2	25767.20	24953	25578	25944	26569	26935
Bank Nifty	Daily	59273.80	-0.68%	-1	59818.50	58990	59132	59394	59536	59799
	Weekly	59752.70	1.50%	9	59057.30	58215	58984	59439	60208	60663
	Monthly	59752.70	3.42%	2	58620.10	56200	57976	58935	60712	61671
Sensex	Daily	85138.27	-0.59%	-1	85629.65	84748	84943	85248	85444	85749
	Weekly	85706.67	0.56%	3	85027.35	83871	84789	85421	86339	86972
	Monthly	85706.67	2.11%	2	84235.40	81429	83568	84811	86950	88193

Gainers - Losers (Nifty 500 Stocks)

Gainers				Losers			
Company Name	Last Price	% Gain	Volume	Company Name	Last Price	% Loss	Volume
Balkrishna Ind	2445.6	6.33%	1912517	Bajaj Housing	97.02	-7.15%	439586429
Birlasoft	404.95	5.06%	6227184	Garden Reach Sh	2608.4	-4.63%	1711353
JSW Holdings	22165	4.92%	18597	Welspun Living	136.38	-3.96%	4871179
Schneider Infra	751.70	4.89%	451019	City Union Bank	273.00	-3.52%	2399772
Minda Corp	600.90	4.21%	601107	Saregama India	382.75	-3.21%	1036039
C. E. Info Syst	1,734.80	3.61%	374429	Indian Bank	859.45	-3.14%	2825373
Natco Pharma	932.55	3.25%	8644797	Latent View	468.25	-3.13%	450356



Nifty Daily chart with RSI indicator



BankNifty Daily chart with RSI indicator



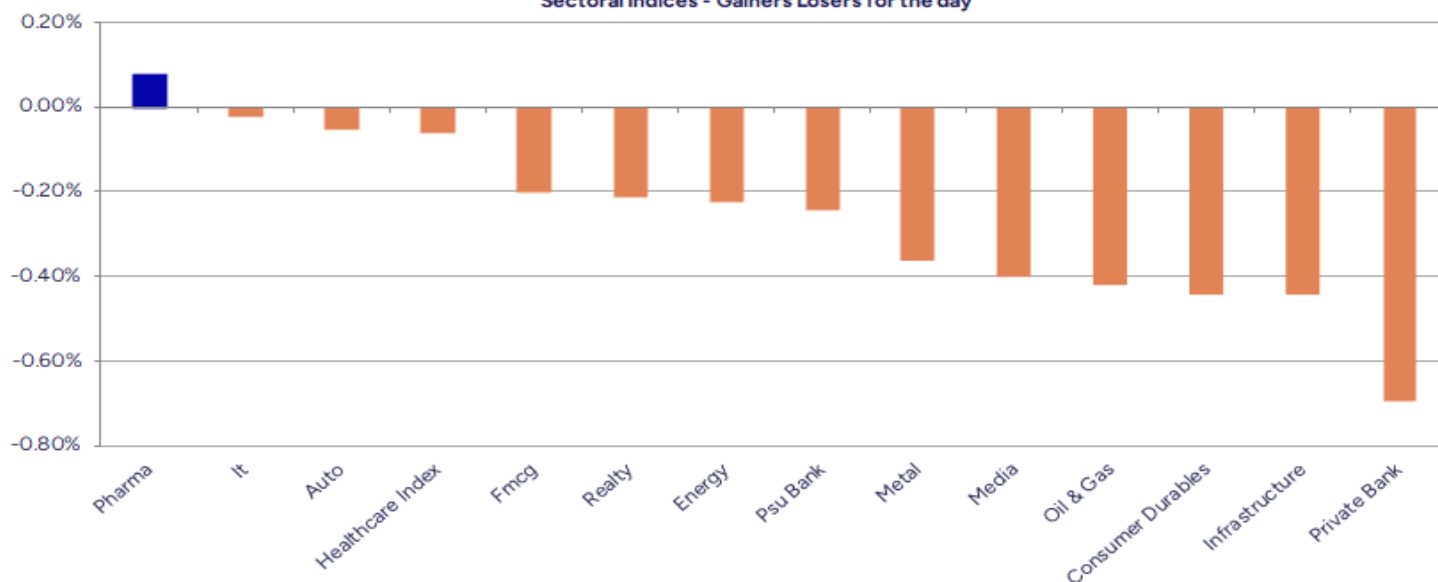
Breakouts - Cross above 200 DMA			
Company Name	LCP	Change %	200 DMA
D.K. Enterprise	81.8	12.49	72.72
Sun Pharma Adv	161.02	10.71	145.44
Mahalaxmi Rub	227.36	2.71	221.36
Akzo Nobel	3482.8	2.14	3409.79
Peria Karamalai	745.15	2.01	730.45
Securecloud Tec	24.13	1.47	23.78
Birlasoft	404.95	1.36	399.5
Gland	1766.1	1.06	1747.59
Shanthala	32.85	0.83	32.58
Oil India	416.65	0.58	414.24
SBI Card	883.45	0.46	879.42
Kiri Industries	582.75	0.46	580.06
Aegis Logistics	774.05	0.40	770.97
NLC India	241.46	0.33	240.66
Auto Stampings	517.1	0.32	515.43
Ajanta Pharma	2588.6	0.30	2580.95
RHI Magnesita	465.75	0.26	464.55
Bang Overseas	52.92	0.23	52.8

* Stocks crossing above its Simple Moving Average (200DMA)

Breakdown - Cross below 200 DMA			
Company Name	LCP	Change %	200 DMA
Regency Ceramic	42.94	-6.24	45.8
Coral India Fin	40.23	-5.92	42.76
Kundan Edifice	110.6	-4.49	115.8
Envirotech Sys	120.9	-4.40	126.46
United Heat	67	-3.47	69.41
Wanbury	246.7	-3.15	254.73
Metro	1125.3	-2.97	1159.77
Samhi Hotels	189.53	-1.82	193.04
Pyramid Techno	160.76	-1.80	163.7
Fert and Chem	855	-1.79	870.56
Religare Enterp	238.66	-1.60	242.55
Nagreeka Cap	27.66	-1.60	28.11
Sarda Energy	492.6	-1.49	500.04
Shree Tirupati	737.35	-1.38	747.64
Mahindra Logist	319.45	-1.27	323.57
Bannari A Spg	30.84	-1.09	31.18
Wise Travel	155	-1.05	156.64
Chalet Hotels	879.95	-1.00	888.84

* Stocks crossing below its Simple Moving Average (200DMA)

Sectoral Indices - Gainers Losers for the day



Stocks witnessing a volume surge as compared to their 5 day average volume

Watch out for the stocks that have seen a huge spurt in its share price over the last three days

Volume Shockers - NSE					
Company name	LCP	% Chg	Volume	Avg Vol *	% Chg
Sundram	951.8	-0.38	502731	3061	16323
SVS Ventures	13.2	4.93	5592000	96000	5725
Ravinder Height	57.87	4.99	51761	1066	4756
KRBL	429.45	13.43	897068	24532	3557
Man Industries	426.4	11.11	259509	7472	3373
Stellant Sec	368.2	0	38923	1239	3042
Universal Cable	860.05	10.56	53525	1717	3018
JNK India	284.7	1.73	45949	1670	2651
SPL Industries	38.99	-3.82	41759	1682	2382
Vasundhara Ras	194.85	19.43	39023	1573	2381
Paras Defence	765.9	6.49	1032273	42440	2332
Kanchi Karp	368.2	-4.8	24309	1261	1827
MSR India	2.74	-2.49	243288	13170	1747
SRM Contractors	633.9	10.11	72777	4019	1711
Oriental Trimex	9.46	0.75	234309	13216	1673
Suryo Food	33.4	3.69	36076	2063	1649
Muthoot Finance	3726.85	9.9	233028	16043	1353
Cohance Life	615.6	-2.21	254954	17800	1332
B C Power Contr	2.5	16.28	1257081	95067	1222
JMJ Fintech	16.6	-10.42	108046	8260	1208
Swadeshi Ind	99.95	0.15	163587	13829	1083

Price Shockers - NSE				
Company name	LCP	Prv Close	% Chg	Volume
Parmeshwar Meta	111.18	81.18	36.95	350000
Wockhardt	1494.75	1233.55	21.17	1360574
Sun Pharma Adv	161.1	134.4	19.87	2466521
Mini Diamonds	33.35	28	19.11	355564
Tarini Int	12.18	10.68	14.04	42000
MPK Steels	142.3	127.82	11.33	224000
Hind Constr	26.58	23.89	11.26	22097173
Hariom Pipe	381.5	343.6	11.03	452810
Colorchips New	20.37	18.4	10.71	11404
S V Global Mill	169.8	153.5	10.62	319
Emmvee Photovol	239.65	217.3	10.29	2676825
Novelix Pharma	66.16	60.01	10.25	42791
Sparkle Gold	80.7	73.2	10.25	1047
Genus Prime Inf	24.21	21.96	10.25	22732
Sinnar Bidi	844.8	766.3	10.24	110
Crimson Metal	40.79	37	10.24	300
Indosolar	582.85	528.7	10.24	5247
Transchem	105.5	95.7	10.24	10420
STRING METAVERS	275.6	250	10.24	264809
Carnation Ind	43.71	39.65	10.24	87
Zelio E-Mobilit	558.3	506.45	10.24	44000

Nifty 50 Stocks - Summary Details

Symbol	LTP	Chng	% Chng	Volume (lacs)	Turnover (crs.)	52w High	Diff with 52w H	52w Low	Diff with 52w L	365 days % chng	30 days % chng
NIFTY 50	26032.20	-143.55	-0.55%	2548.03	26299	26326	1.12%	21744	19.72%	1.21%	7.88%
ADANIENT	2239.00	-23.00	-1.02%	10.35	232	2617	14.43%	1968	13.80%	-9.73%	-9.08%
ADANIPTS	1519.00	-11.50	-0.75%	19.75	300	1549	1.94%	1011	50.28%	4.59%	27.57%
APOLLOHOSP	7245.50	-42.00	-0.58%	3.30	239	8100	10.54%	6001	20.74%	-5.72%	6.05%
ASIANPAINT	2958.00	90.40	3.15%	21.02	615	2962	0.14%	2125	39.22%	17.67%	19.15%
AXISBANK	1262.30	-13.40	-1.05%	81.15	1025	1304	3.20%	934	35.22%	2.04%	10.71%
BAJAJ-AUTO	9072.00	-24.00	-0.26%	3.20	290	9490	4.40%	7089	27.97%	2.17%	0.57%
BAJAJFINSV	2065.60	-16.20	-0.78%	6.83	141	2195	5.90%	1552	33.12%	-1.07%	30.76%
BAJFINANCE	1025.30	4.20	0.41%	67.06	687	1103	7.00%	649	57.96%	-1.66%	-84.41%
BEL	413.10	-4.15	-0.99%	112.15	464	436	5.25%	240	71.95%	-3.06%	34.11%
BHARTIARTL	2107.80	18.10	0.87%	65.91	1386	2175	3.07%	1560	35.16%	2.41%	29.31%
CIPLA	1519.30	-3.80	-0.25%	17.61	268	1673	9.19%	1335	13.81%	1.02%	-1.13%
COALINDIA	379.10	-0.55	-0.14%	36.95	140	426	10.99%	349	8.55%	-2.50%	-8.99%
DRREDDY	1276.50	16.40	1.30%	23.61	300	1406	9.20%	1020	25.15%	6.48%	6.06%
EICHERMOT	7105.00	-20.50	-0.29%	4.48	319	7285	2.46%	4646	52.93%	1.51%	47.20%
ETERNAL	300.60	-0.90	-0.30%	235.17	704	368	18.41%	195	54.31%	-5.41%	#VALUE!
GRASIM	2734.50	3.00	0.11%	3.88	106	2978	8.17%	2277	20.09%	-5.42%	4.94%
HCLTECH	1634.60	-8.30	-0.51%	23.26	380	2012	18.77%	1303	25.47%	6.10%	-11.50%
HDFCBANK	991.40	-10.70	-1.07%	273.17	2705	1021	2.85%	812	22.07%	0.25%	-44.89%
HDFCLIFE	760.00	-6.75	-0.88%	20.55	156	821	7.40%	584	30.07%	3.71%	15.39%
HINDALCO	807.50	-3.30	-0.41%	42.37	342	864	6.54%	546	47.77%	-4.84%	22.96%
HINDUNILVR	2475.00	10.50	0.43%	21.79	539	2750	10.00%	2136	15.87%	0.50%	-0.74%
ICICIBANK	1373.80	-16.30	-1.17%	121.26	1667	1500	8.41%	1186	15.83%	2.06%	5.61%
INDIGO	5700.00	-94.00	-1.62%	11.79	674	6233	8.54%	3945	44.49%	1.29%	30.11%
INFY	1563.00	-1.00	-0.06%	63.36	991	2006	22.10%	1307	19.59%	5.31%	-15.98%
ITC	401.70	-2.55	-0.63%	80.94	325	491	18.19%	390	2.96%	-4.62%	-15.90%
JIOFIN	305.25	0.50	0.16%	85.90	262	347	12.12%	199	53.66%	-0.64%	-7.16%
JSWSTEEL	1159.90	-8.50	-0.73%	28.34	330	1224	5.23%	880	31.81%	-3.65%	20.29%
KOTAKBANK	2143.60	-4.00	-0.19%	36.59	787	2302	6.88%	1724	24.36%	1.91%	21.37%
LT	4034.90	-38.30	-0.94%	14.91	602	4140	2.54%	2965	36.07%	-0.01%	8.21%
M&M	3720.90	-20.70	-0.55%	22.86	851	3795	1.95%	2425	53.44%	6.58%	25.30%
MARUTI	16245.00	148.00	0.92%	3.83	621	16660	2.49%	10725	51.47%	0.33%	46.64%
MAXHEALTH	1119.00	-6.40	-0.57%	22.06	247	1314	14.86%	940	19.04%	-2.64%	14.06%
NESTLEIND	1258.10	-2.50	-0.20%	9.12	115	1312	4.08%	1055	19.25%	-1.00%	-43.66%
NTPC	328.25	1.15	0.35%	58.07	191	375	12.50%	293	12.11%	-2.48%	-9.64%
ONGC	243.65	-1.18	-0.48%	54.14	132	274	10.91%	205	18.85%	-4.63%	-5.13%
POWERGRID	267.50	-2.15	-0.80%	110.30	296	336	20.45%	247	8.17%	-7.18%	-18.81%
RELIANCE	1548.30	-17.80	-1.14%	113.89	1766	1581	2.09%	1115	38.88%	4.03%	19.66%
SBILIFE	1985.00	13.40	0.68%	9.43	186	2087	4.87%	1373	44.62%	1.32%	37.82%
SBIN	969.90	-3.20	-0.33%	134.44	1308	999	2.91%	680	42.63%	3.23%	15.30%
SHRIRAMFIN	844.20	-7.35	-0.86%	55.87	473	872	3.19%	493	71.12%	12.62%	-72.07%
SUNPHARMA	1804.90	-2.50	-0.14%	29.49	530	1910	5.50%	1548	16.60%	6.44%	1.04%
TATACONSUM	1161.00	-2.80	-0.24%	7.09	82	1203	3.48%	883	31.50%	-0.24%	21.23%
TATASTEEL	167.89	-0.74	-0.44%	153.55	258	187	10.19%	123	36.92%	-8.24%	16.08%
TCS	3137.50	4.10	0.13%	25.12	787	4495	30.20%	2867	9.45%	2.54%	-26.58%
TECHM	1533.00	3.50	0.23%	17.55	269	1808	15.20%	1209	26.76%	7.88%	-10.26%
TITAN	3886.50	-8.40	-0.22%	6.61	257	3956	1.76%	2925	32.87%	3.71%	19.60%
TMPV	361.65	-2.15	-0.59%	85.76	310	820	55.92%	352	2.74%	-11.77%	#VALUE!
TRENT	4235.00	19.10	0.45%	4.92	208	7493	43.48%	4200	0.84%	-9.97%	-37.80%
ULTRACEMCO	11673.00	11.00	0.09%	1.91	222	13097	10.87%	10048	16.17%	-2.35%	4.14%
WIPRO	250.74	0.46	0.18%	85.36	213	325	22.75%	228	9.97%	3.95%	-56.71%

Disclaimer / Disclosures

ANALYST CERTIFICATION

I, Mrs. Vaishali Parekh B.com, Research Analyst, author and the name subscribed to this report, hereby certify that all of the views expressed in this research report accurately reflect our views about the subject issuer(s) or securities. We also certify that no part of our compensation was, is, or will be directly or indirectly related to the specific recommendation(s) or view(s) in this report.

Terms & conditions and other disclosures:

Prabhudas Lilladher Pvt. Ltd, Mumbai, India (hereinafter referred to as "PL") is engaged in the business of Stock Broking, Portfolio Manager, Depository Participant and distribution for third party financial products. PL is a subsidiary of Prabhudas Lilladher Advisory Services Pvt Ltd. which has its various subsidiaries engaged in business of commodity broking, investment banking, financial services (margin funding) and distribution of third party financial/other products, details in respect of which are available at www.plindia.com

This document has been prepared by the Research Division of PL and is meant for use by the recipient only as information and is not for circulation. This document is not to be reported or copied or made available to others without prior permission of PL. It should not be considered or taken as an offer to sell or a solicitation to buy or sell any security.

The information contained in this report has been obtained from sources that are considered to be reliable. However, PL has not independently verified the accuracy or completeness of the same. Neither PL nor any of its affiliates, its directors or its employees accepts any responsibility of whatsoever nature for the information, statements and opinion given, made available or expressed herein or for any omission therein.

Recipients of this report should be aware that past performance is not necessarily a guide to future performance and value of investments can go down as well. The suitability or otherwise of any investments will depend upon the recipient's particular circumstances and, in case of doubt, advice should be sought from an independent expert/advisor.

Either PL or its affiliates or its directors or its employees or its representatives or its clients or their relatives may have position(s), make market, act as principal or engage in transactions of securities of companies referred to in this report and they may have used the research material prior to publication.

PL may from time to time solicit or perform investment banking or other services for any company mentioned in this document.

PL is registered as Research Analyst under Securities and Exchange Board of India (Research Analysts) Regulations, 2014 PL submits that no material disciplinary action has been taken on us by any Regulatory Authority impacting Equity Research Analysis activities.

PL or its research analysts or its associates or his relatives do not have any financial interest in the subject company.

PL or its research analysts or its associates or his relatives do not have actual/beneficial ownership of one per cent or more securities of the subject company at the end of the month immediately preceding the date of publication of the research report.

PL or its research analysts or its associates or his relatives do not have any material conflict of interest at the time of publication of the research report.

PL or its associates might have received compensation from the subject company in the past twelve months.

PL or its associates might have managed or co-managed public offering of securities for the subject company in the past twelve months or mandated by the subject company for any other assignment in the past twelve months.

PL or its associates might have received any compensation for investment banking or merchant banking or brokerage services from the subject company in the past twelve months.

PL or its associates might have received any compensation for products or services other than investment banking or merchant banking or brokerage services from the subject company in the past twelve months PL or its associates might have received any compensation or other benefits from the subject company or third party in connection with the research report.

PL encourages independence in research report preparation and strives to minimize conflict in preparation of research report. PL or its analysts did not receive any compensation or other benefits from the subject Company or third party in connection with the preparation of the research report. PL or its Research Analysts do not have any material conflict of interest at the time of publication of this report.

It is confirmed that Mrs.Vaishali Parekh B.com, Research Analyst of this report has not received any compensation from the companies mentioned in the report in the preceding twelve months compensation of our Research Analysts is not based on any specific merchant banking, investment banking or brokerage service transactions.

The Research analysts for this report certifies that all of the views expressed in this report accurately reflect his or her personal views about the subject company or companies and its or their securities, and no part of his or her compensation was, is or will be, directly or indirectly related to specific recommendations or views expressed in this report.

The research analysts for this report has not served as an officer, director or employee of the subject company PL or its research analysts have not engaged in market making activity for the subject company

Our sales people, traders, and other professionals or affiliates may provide oral or written market commentary or trading strategies to our clients that reflect opinions that are contrary to the opinions expressed herein, and our proprietary trading and investing businesses may make investment decisions that are inconsistent with the recommendations expressed herein. In reviewing these materials, you should be aware that any or all of the foregoing, among other things, may give rise to real or potential conflicts of interest.

PL and its associates, their directors and employees may (a) from time to time, have a long or short position in, and buy or sell the securities of the subject company or (b) be engaged in any other transaction involving such securities and earn brokerage or other compensation or act as a market maker in the financial instruments of the subject company or act as an advisor or lender/borrower to the subject company or may have any other potential conflict of interests with respect to any recommendation and other related information and opinions.