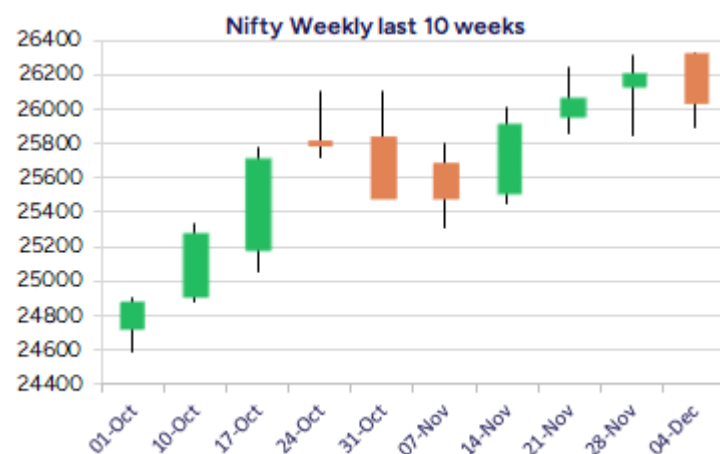
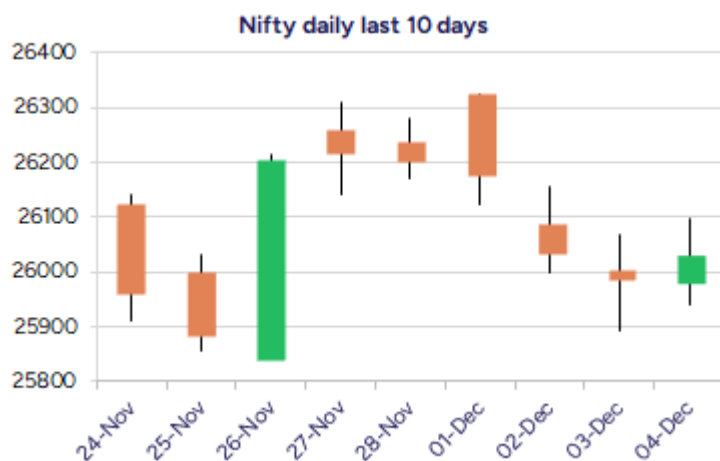


Date: 05th December 2025

* Sensex 85265.32 + 158.51

* Nifty 26033.75 + 47.75

* Bank Nifty 59288.70 - 59.55



*Blue candle → Close rate > Open rate * Red candle → Close rate < Open rate

Market Preview

Nifty witnesses revival; ends near 26000 zone

Nifty amid some fluctuations recovered during the intraday session to end in the green just above the 26000 zone with bias and sentiment maintained with a cautious approach. BankNifty maintained a rangebound movement awaiting the RBI Policy outcome which would trigger for fresh directional move in the coming sessions. The market breadth was slightly on the weaker side with the advance decline indicating a ratio of 4:5 at close.

Market Forecast

Nifty daily range 25900 - 26300

Nifty after 3 days of losing sessions sliding down witnessed a slightly volatile session to touch the 26100 zone during the intraday session to end in the green just above the 26000 zone in anticipation of positive outcome from the Indo-Russian talks in the coming days. As mentioned earlier, the index would have the important near-term support near the 25770-25800 band which needs to be sustained and, on the upside, the 26300 zone would be the resistance which needs to be breached to carry on with the positive move further ahead.

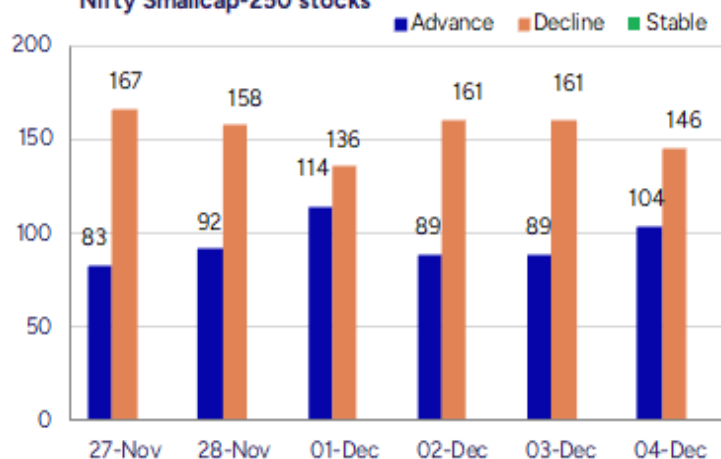
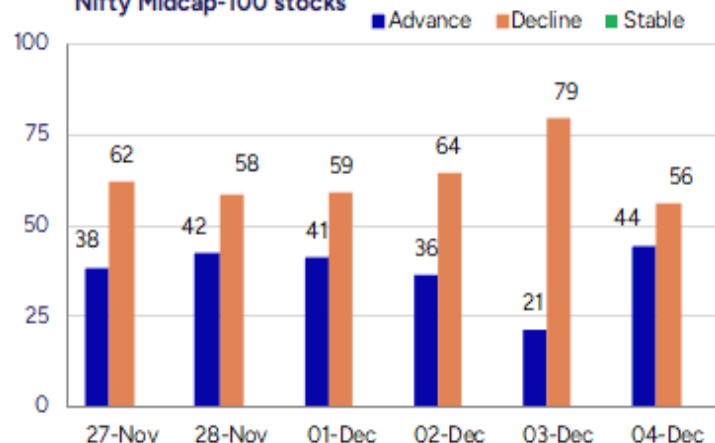
BankNifty indicated a rangebound movement with some fluctuations witnessed, and overall consolidated near the 59300 zone ahead of the RBI policy outcome to end on a marginally flat note near the 59300 level with bias and the trend maintained positive. As mentioned earlier, the index would have the near-term support positioned near the 58700 zone which needs to be sustained and, on the upside, the 60100 zone would be the resistance level which needs to be crossed to trigger for a breakout.

The support for the day is seen at 25900 levels, while the resistance is seen at 26300 levels. BankNifty would have the daily range of 58800-60000 levels.

Indices	Period	Closing	% Chng	Trend	Reversal	2 Sup	1 Sup	Pivot	1 Res	2 Res
Nifty	Daily	26033.75	0.18%	-3	26158.70	25864	25949	26024	26108	26183
	Weekly	26202.95	0.52%	3	26026.00	25652	25927	26119	26394	26585
	Monthly	26202.95	1.87%	2	25767.20	24953	25578	25944	26569	26935
Bank Nifty	Daily	59288.70	-0.10%	-3	59783.70	58813	59051	59300	59538	59786
	Weekly	59752.70	1.50%	9	59057.30	58215	58984	59439	60208	60663
	Monthly	59752.70	3.42%	2	58620.10	56200	57976	58935	60712	61671
Sensex	Daily	85265.32	0.19%	-3	85579.30	84697	84981	85234	85518	85771
	Weekly	85706.67	0.56%	3	85027.35	83871	84789	85421	86339	86972
	Monthly	85706.67	2.11%	2	84235.40	81429	83568	84811	86950	88193

Gainers - Losers (Nifty 500 Stocks)

Gainers				Losers			
Company Name	Last Price	% Gain	Volume	Company Name	Last Price	% Loss	Volume
APTUS VALUE	283.95	2.90%	1357873	360 ONE WAM	1,127.90	-1.76%	312692
Astral Ltd	1,440.70	2.21%	783804	Amber Enterpris	6750	-3.94%	329590
Bharat Dynamics	1528	3.03%	1495710	Anant Raj	540.35	-2.35%	1356654
Bikaji Foods	712.40	2.09%	241290	Biocon	388.35	-5.28%	12100512
Birlasoft	435.90	3.11%	6126773	Bombay Burmah	1,857.00	-1.35%	58798
BLS Internation	331.55	1.86%	4575825	C. E. Info Syst	1679.1	-2.22%	47509
CAMS	3,956.70	2.52%	643165	Carborundum	879.7	-1.79%	113081

Nifty Smallcap-250 stocks

Nifty Midcap-100 stocks


Nifty Daily chart with RSI indicator



BankNifty Daily chart with RSI indicator

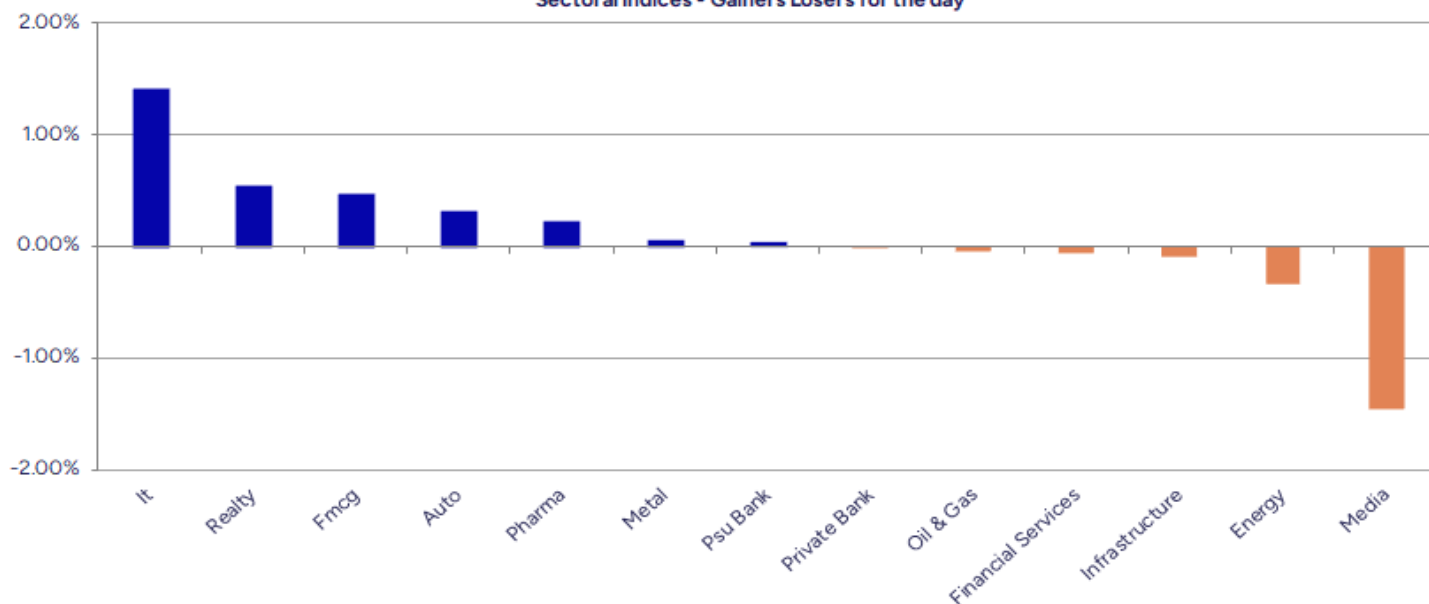


Breakouts - Cross above 200 DMA				Breakdown - Cross below 200 DMA			
Company Name	LCP	Change %	200 DMA	Company Name	LCP	Change %	200 DMA
Total Transport	86.05	16.73	73.72	Enfuse Solution	219.2	-4.96	230.64
SMC Global Secu	73.48	14.26	64.31	Art Nirman	49.28	-2.86	50.73
Vijaya Diagnost	1081.35	7.23	1008.45	NK Industries	65.62	-2.53	67.32
Nectar Life	20.94	5.86	19.78	63 Moons Tech	828.6	-1.59	841.95
Brace Port Logi	89.35	5.76	84.48	Global Surfaces	112.85	-1.57	114.65
SAR Televenture	231.05	3.97	222.22	Shanthala	32	-1.54	32.5
Vertexplus	121	2.91	117.58	Interglobe Avi	5421	-1.30	5492.24
Renaissance	126.59	2.82	123.12	Filatex India	50.39	-1.29	51.05
Prudent Advisor	2603.2	2.52	2539.26	Innovana	439.25	-1.26	444.86
Committed Cargo	201.9	2.46	197.06	Arman Financial	1507.9	-1.26	1527.07
Petro Carbon	183.1	1.96	179.58	Kernex Micro	1038.2	-1.19	1050.7
Astral Ltd	1440.7	1.77	1415.62	Greenlam Ind	241.7	-1.05	244.27
Tarmat	54.61	1.17	53.98	Sterlite Techno	100	-1.03	101.04
Keynote Finance	285.2	1.08	282.16	Sunteck Realty	412.45	-1.03	416.73
Wise Travel	158	0.98	156.46	Bhageria Indu	179.74	-1.02	181.6
Barak Vally Cem	42.83	0.80	42.49	Butterfly	686.05	-0.92	692.41
LIC India	875.85	0.80	868.87	Balu Forge Indu	614.4	-0.73	618.92
Cipla	1521	0.65	1511.17	The Hi-Tech Gea	677.6	-0.70	682.35

* Stocks crossing above its Simple Moving Average (200DMA)

* Stocks crossing below its Simple Moving Average (200DMA)

Sectoral Indices - Gainers Losers for the day



Stocks witnessing a volume surge as compared to their 5 day average volume

Watch out for the stocks that have seen a huge spurt in its share price over the last three days

Volume Shockers - NSE					
Company name	LCP	% Chg	Volume	Avg Vol *	% Chg
Sagar Cement	215.1	4.44	812654	1160	69956
Metropolis	1923	-1.17	344121	1193	28740
Bliss GVS	169.55	9.46	3565522	37454	9420
Transpek	1286.4	-1.16	117511	1797	6439
Alivus Life	868.8	-0.56	1703153	26938	6223
Vijaya Diagnost	1067	6.2	412546	9134	4416
Max Estates	11350	4345	504532	0	0
Fruition Vent	39	4.36	40207	1106	3535
Oberoi Realty	1661.7	1.26	209136	6588	3075
Aarti Ind	368.8	-0.32	595802	19779	2912
Novartis India	795	-1.74	100610	3527	2753
Jash Engineerin	449.3	-0.88	53629	2298	2234
Windsor	275.25	4.68	65625	2864	2191
SMC Global Secu	73.69	20	315465	14653	2053
Interglobe Avi	5466.55	-2.25	227592	10691	2029
Banco Products	721.75	8.01	440378	22238	1880
Landmark Cars	533.6	1.18	202936	10378	1856
Berger Paints	553.15	-0.91	703887	37710	1767
LIC Housing Fin	546.2	-0.53	413417	22183	1764
Route	715.2	1.35	102376	5788	1669
Indiqube Spaces	206.25	-0.12	41837	2395	1647

Price Shockers - NSE				
Company name	LCP	Prv Close	% Chg	Volume
Parmeshwar Meta	134.51	92.65	45.18	66000
Axel Polymers	53.9	44.68	20.64	159625
Pharmaids Pharm	51.9	44.08	17.74	5347
Lykis	36	30.78	16.96	33288
Oceanic Foods	73.59	63.56	15.78	66303
Eraaya Life	37.27	32.2	15.75	59541
Transchem	116.3	100.48	15.74	71044
iStreet Network	54.12	46.77	15.72	36011
Ador Multi	129.45	111.9	15.68	8084
Alacrity Sec	51.99	45.04	15.43	4653
STEL Holdings	599	519	15.41	6909
Fruition Vent	39	33.93	14.94	40207
Mahamaya Life	132.2	115.55	14.41	151200
Sun Pharma Adv	152.1	134.25	13.3	8204160
Birlasoft	435.65	385.3	13.07	307112
Kiri Industries	611	542.15	12.7	78910
Sanjivani Paren	219	194.55	12.57	12298
Hikal	253.2	225.8	12.13	2547585
Rapicut Carbide	107.94	96.77	11.54	6313
Daulat Sec	36.23	32.49	11.51	6988
MM Forgings	365	327.65	11.4	28674

Nifty 50 stocks - Summary Details											
Symbol	LTP	Chng	% Chng	Volume (lacs)	Turnover (crs.)	52w High	Diff with 52w H	52w Low	Diff with 52w L	365 days % chng	30 days % chng
NIFTY 50	26033.75	47.75	0.18%	2480.61	26371.32	26325.80	1.11%	21743.65	19.73%	1.03%	7.04%
ADANIENT	2216.80	27.00	1.23%	25.23	558.18	2616.50	15.28%	1967.52	12.67%	-11.74%	-10.88%
ADANIPTS	1507.70	10.00	0.67%	15.92	239.14	1549.00	2.67%	1010.75	49.17%	3.18%	23.19%
APOLLOHOSP	7192.00	8.00	0.11%	3.06	220.42	8099.50	11.20%	6001.00	19.85%	-6.47%	1.67%
ASIANPAINT	2955.00	1.50	0.05%	14.66	434.92	2985.70	1.03%	2124.75	39.08%	17.63%	19.14%
AXISBANK	1277.50	6.80	0.54%	32.16	410.98	1304.00	2.03%	933.50	36.85%	3.07%	11.75%
BAJAJ-AUTO	9080.50	80.00	0.89%	2.76	249.28	9490.00	4.32%	7089.35	28.09%	1.21%	-1.42%
BAJAJFINSV	2048.50	2.50	0.12%	7.59	155.42	2195.00	6.67%	1551.65	32.02%	-2.03%	28.14%
BAJFINANCE	1027.10	5.70	0.56%	54.05	554.38	1102.50	6.84%	663.08	54.90%	-2.05%	-84.64%
BEL	409.00	5.05	1.25%	108.65	441.35	436.00	6.19%	240.25	70.24%	-5.20%	31.62%
BHARTIARTL	2103.00	17.00	0.81%	46.12	964.08	2174.50	3.29%	1559.50	34.85%	1.53%	26.92%
CIPLA	1518.00	10.00	0.66%	7.26	110.08	1673.00	9.26%	1335.00	13.71%	0.45%	0.02%
COALINDIA	379.00	3.75	1.00%	31.34	118.24	425.90	11.01%	349.25	8.52%	-3.45%	-11.01%
DRREDDY	1278.50	-2.20	-0.17%	19.71	251.19	1405.90	9.06%	1020.00	25.34%	6.94%	4.83%
EICHERMOT	7092.50	11.00	0.16%	3.65	259.18	7284.50	2.64%	4646.00	52.66%	1.06%	46.90%
ETERNAL	296.55	-1.20	-0.40%	319.47	942.83	368.45	19.51%	194.80	52.23%	-6.29%	#VALUE!
GRASIM	2725.70	5.40	0.20%	2.77	75.54	2977.80	8.47%	2276.95	19.71%	-5.93%	0.99%
HCLTECH	1655.50	15.00	0.91%	39.36	652.73	2012.20	17.73%	1302.75	27.08%	6.42%	-12.34%
HDFCBANK	998.50	-2.00	-0.20%	145.28	1450.27	1020.50	2.16%	812.15	22.95%	1.34%	-44.56%
HDFCLIFE	763.15	11.20	1.49%	26.49	199.81	820.75	7.02%	584.30	30.61%	2.75%	17.46%
HINDALCO	811.00	-5.30	-0.65%	33.81	276.24	864.00	6.13%	546.45	48.41%	-3.72%	23.20%
HINDUNILVR	2464.10	16.10	0.66%	25.69	632.40	2750.00	10.40%	2136.00	15.36%	-0.71%	-1.26%
ICICIBANK	1386.00	-5.50	-0.40%	73.74	1021.39	1500.00	7.60%	1186.00	16.86%	3.43%	6.66%
INDIGO	5461.50	-134.00	-2.39%	41.18	2259.04	6232.50	12.37%	3945.00	38.44%	-0.52%	26.90%
INFY	1593.20	14.50	0.92%	126.09	2006.68	2006.45	20.60%	1307.00	21.90%	6.50%	-16.02%
ITC	403.25	2.75	0.69%	80.58	323.98	491.00	17.87%	390.15	3.36%	-4.72%	-16.07%
JIOFIN	301.60	0.60	0.20%	56.00	169.06	347.35	13.17%	198.65	51.82%	-1.89%	-8.70%
JSWSTEEL	1149.80	6.20	0.54%	22.85	263.28	1223.90	6.05%	880.00	30.66%	-5.17%	15.54%
KOTAKBANK	2134.00	-12.10	-0.56%	25.74	549.20	2301.90	7.29%	1723.75	23.80%	2.09%	22.36%
LT	3991.00	3.00	0.08%	10.27	409.97	4140.00	3.60%	2965.30	34.59%	-1.06%	7.67%
M&M	3670.00	20.60	0.56%	19.84	726.62	3795.00	3.29%	2425.00	51.34%	4.65%	20.99%
MARUTI	15979.00	-103.00	-0.64%	2.49	397.69	16660.00	4.09%	10725.00	48.99%	-0.64%	43.09%
MAXHEALTH	1081.20	-4.80	-0.44%	30.37	327.31	1314.30	17.74%	940.05	15.02%	-5.38%	6.55%
NESTLEIND	1241.00	-0.90	-0.07%	6.65	82.42	1311.60	5.38%	1055.00	17.63%	-2.34%	-44.85%
NTPC	322.80	-0.15	-0.05%	59.64	192.64	375.15	13.95%	292.80	10.25%	-4.15%	-9.84%
ONGC	242.00	1.98	0.82%	108.25	261.85	273.50	11.52%	205.00	18.05%	-6.01%	-6.81%
POWERGRID	269.10	0.65	0.24%	51.02	137.12	336.25	19.97%	247.30	8.82%	-6.84%	-18.12%
RELIANCE	1525.30	-13.50	-0.88%	118.67	1831.91	1581.30	3.54%	1114.85	36.82%	3.53%	17.54%
SBILIFE	2000.70	27.90	1.41%	6.60	132.02	2086.60	4.12%	1372.55	45.77%	0.87%	38.73%
SBIN	948.80	-2.25	-0.24%	136.22	1290.61	999.00	5.03%	680.00	39.53%	1.50%	13.71%
SHRIRAMFIN	831.05	2.95	0.36%	114.37	944.90	872.00	4.70%	493.35	68.45%	10.58%	-73.24%
SUNPHARMA	1813.70	7.00	0.39%	17.14	310.84	1910.00	5.04%	1548.00	17.16%	6.86%	-0.10%
TATACONSUM	1145.10	5.10	0.45%	7.04	80.54	1202.80	4.80%	882.90	29.70%	-2.15%	19.12%
TMPV	355.75	-1.10	-0.31%	91.71	326.85	820.35	56.63%	352.00	1.07%	-12.96%	#VALUE!
TATASTEEL	166.90	-0.02	-0.01%	114.18	190.61	186.94	10.72%	122.62	36.11%	-8.71%	14.01%
TCS	3227.00	47.00	1.48%	50.25	1623.77	4494.90	28.21%	2866.60	12.57%	3.99%	-25.64%
TECHM	1565.00	23.30	1.51%	24.23	379.13	1807.70	13.43%	1209.40	29.40%	8.24%	-11.70%
TITAN	3794.00	-23.80	-0.62%	7.77	295.65	3956.00	4.10%	2925.00	29.71%	1.90%	15.45%
TRENT	4210.00	21.80	0.52%	4.27	179.65	7493.05	43.81%	4158.00	1.25%	-10.78%	-38.46%
ULTRACEMCO	11600.00	9.00	0.08%	1.60	185.10	13097.00	11.43%	10047.85	15.45%	-2.98%	-0.49%
WIPRO	257.30	2.61	1.02%	106.85	274.83	324.60	20.73%	228.00	12.85%	5.83%	-56.43%

Disclaimer / Disclosures

ANALYST CERTIFICATION

I, Mrs. Vaishali Parekh B.com, Research Analyst, author and the name subscribed to this report, hereby certify that all of the views expressed in this research report accurately reflect our views about the subject issuer(s) or securities. We also certify that no part of our compensation was, is, or will be directly or indirectly related to the specific recommendation(s) or view(s) in this report.

Terms & conditions and other disclosures:

Prabhudas Lilladher Pvt. Ltd, Mumbai, India (hereinafter referred to as "PL") is engaged in the business of Stock Broking, Portfolio Manager, Depository Participant and distribution for third party financial products. PL is a subsidiary of Prabhudas Lilladher Advisory Services Pvt Ltd. which has its various subsidiaries engaged in business of commodity broking, investment banking, financial services (margin funding) and distribution of third party financial/other products, details in respect of which are available at www.plindia.com

This document has been prepared by the Research Division of PL and is meant for use by the recipient only as information and is not for circulation. This document is not to be reported or copied or made available to others without prior permission of PL. It should not be considered or taken as an offer to sell or a solicitation to buy or sell any security.

The information contained in this report has been obtained from sources that are considered to be reliable. However, PL has not independently verified the accuracy or completeness of the same. Neither PL nor any of its affiliates, its directors or its employees accepts any responsibility of whatsoever nature for the information, statements and opinion given, made available or expressed herein or for any omission therein.

Recipients of this report should be aware that past performance is not necessarily a guide to future performance and value of investments can go down as well. The suitability or otherwise of any investments will depend upon the recipient's particular circumstances and, in case of doubt, advice should be sought from an independent expert/advisor.

Either PL or its affiliates or its directors or its employees or its representatives or its clients or their relatives may have position(s), make market, act as principal or engage in transactions of securities of companies referred to in this report and they may have used the research material prior to publication.

PL may from time to time solicit or perform investment banking or other services for any company mentioned in this document.

PL is registered as Research Analyst under Securities and Exchange Board of India (Research Analysts) Regulations, 2014 PL submits that no material disciplinary action has been taken on us by any Regulatory Authority impacting Equity Research Analysis activities.

PL or its research analysts or its associates or his relatives do not have any financial interest in the subject company.

PL or its research analysts or its associates or his relatives do not have actual/beneficial ownership of one per cent or more securities of the subject company at the end of the month immediately preceding the date of publication of the research report.

PL or its research analysts or its associates or his relatives do not have any material conflict of interest at the time of publication of the research report.

PL or its associates might have received compensation from the subject company in the past twelve months.

PL or its associates might have managed or co-managed public offering of securities for the subject company in the past twelve months or mandated by the subject company for any other assignment in the past twelve months.

PL or its associates might have received any compensation for investment banking or merchant banking or brokerage services from the subject company in the past twelve months.

PL or its associates might have received any compensation for products or services other than investment banking or merchant banking or brokerage services from the subject company in the past twelve months PL or its associates might have received any compensation or other benefits from the subject company or third party in connection with the research report.

PL encourages independence in research report preparation and strives to minimize conflict in preparation of research report. PL or its analysts did not receive any compensation or other benefits from the subject Company or third party in connection with the preparation of the research report. PL or its Research Analysts do not have any material conflict of interest at the time of publication of this report.

It is confirmed that Mrs.Vaishali Parekh B.com, Research Analyst of this report has not received any compensation from the companies mentioned in the report in the preceding twelve months compensation of our Research Analysts is not based on any specific merchant banking, investment banking or brokerage service transactions.

The Research analysts for this report certifies that all of the views expressed in this report accurately reflect his or her personal views about the subject company or companies and its or their securities, and no part of his or her compensation was, is or will be, directly or indirectly related to specific recommendations or views expressed in this report.

The research analysts for this report has not served as an officer, director or employee of the subject company PL or its research analysts have not engaged in market making activity for the subject company

Our sales people, traders, and other professionals or affiliates may provide oral or written market commentary or trading strategies to our clients that reflect opinions that are contrary to the opinions expressed herein, and our proprietary trading and investing businesses may make investment decisions that are inconsistent with the recommendations expressed herein. In reviewing these materials, you should be aware that any or all of the foregoing, among other things, may give rise to real or potential conflicts of interest.

PL and its associates, their directors and employees may (a) from time to time, have a long or short position in, and buy or sell the securities of the subject company or (b) be engaged in any other transaction involving such securities and earn brokerage or other compensation or act as a market maker in the financial instruments of the subject company or act as an advisor or lender/borrower to the subject company or may have any other potential conflict of interests with respect to any recommendation and other related information and opinions.