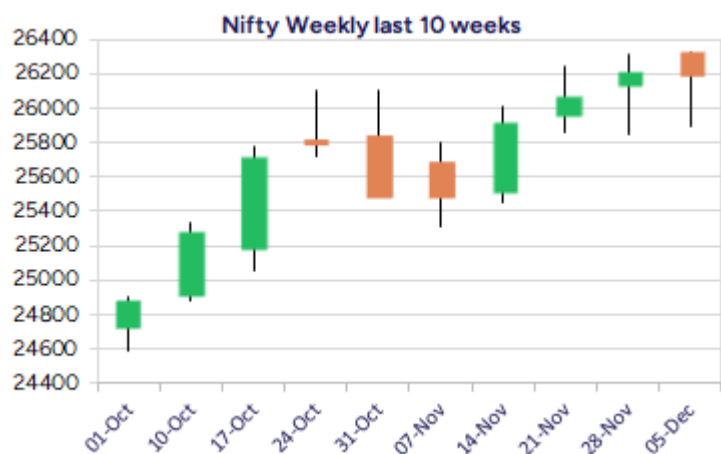
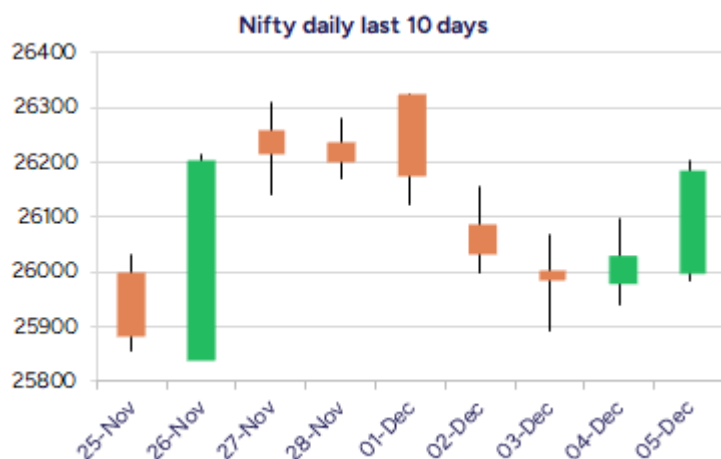


Date: 08<sup>th</sup> December 2025

\* Sensex 85712.37 + 447.05

\* Nifty 26186.45 + 152.70

\* Bank Nifty 59777.20 + 488.50



\*Blue candle → Close rate > Open rate \* Red candle → Close rate < Open rate

## Market Preview

### Nifty ends on an optimistic note

Nifty witnessed a robust move post the RBI Policy announcement to improve the bias once again with further gains expected in the coming days. BankNifty staged a strong bounce back to indicate a bullish candle formation to anticipate for further rise in the coming sessions with the trend once again getting better. The market breadth was slightly on the weaker side with the advance decline indicating a ratio of 4:5 at close.

## Market Forecast

### Nifty daily range 26000 - 26400

Nifty indicated a strong bounce post the RBI policy announcement to surge ahead and attain the 26200 zone during the intraday session to improve the bias once again anticipating for further rise in the coming days. With a higher bottom formation visible on the daily chart picking up from the 28900 zone, the index would have the important near-term support near the 25770-25800 band as mentioned earlier, and on the upside, the 26300 zone would be the resistance which needs to be breached to carry on with the positive move further ahead.

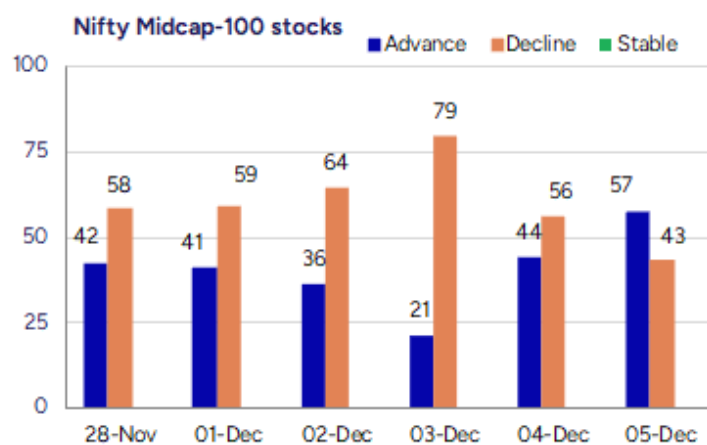
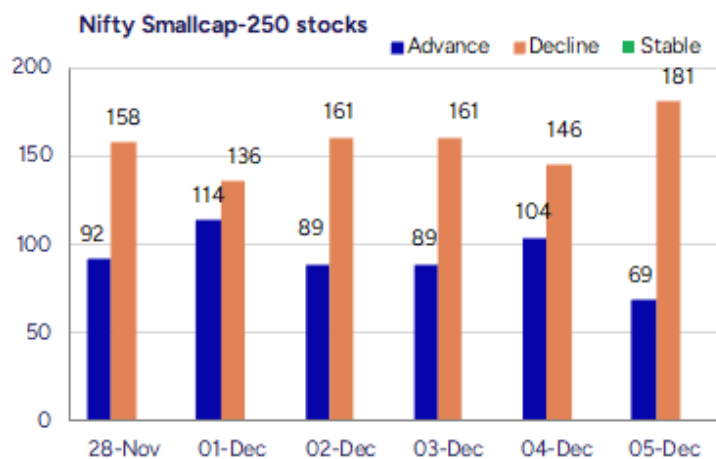
BankNifty after having consolidated near the 59000 zone, it has indicated a strong recovery with a bullish candle formation on the daily chart to improve the bias once again and can expect for further upward move in the coming days overall trend maintained intact. As mentioned earlier, the index would have the near-term support positioned near the 58700 zone and, on the upside, the 60100 zone would be the resistance level which needs to be breached to trigger for a breakout and thereafter, expecting for higher targets of 61300 and 63000 levels in the coming days.

The support for the day is seen at 26000 levels, while the resistance is seen at 26400 levels. BankNifty would have the daily range of 59300-60400 levels.

Indices	Period	Closing	% Chng	Trend	Reversal	2 Sup	1 Sup	Pivot	1 Res	2 Res
Nifty	Daily	26186.45	0.59%	1	26157.55	25908	26047	26125	26264	26342
	Weekly	26186.45	-0.06%	4	26062.10	25701	25944	26135	26378	26569
	Monthly	26202.95	1.87%	2	25767.20	24953	25578	25944	26569	26935
Bank Nifty	Daily	59777.20	0.82%	-4	59760.70	58881	59329	59555	60002	60228
	Weekly	59777.20	0.04%	10	59260.20	58422	59099	59606	60284	60791
	Monthly	59752.70	3.42%	2	58620.10	56200	57976	58935	60712	61671
Sensex	Daily	85712.37	0.52%	1	85612.00	84810	85261	85529	85980	86248
	Weekly	85712.37	0.01%	4	85185.15	84188	84950	85527	86289	86866
	Monthly	85706.67	2.11%	2	84235.40	81429	83568	84811	86950	88193

**Gainers - Losers ( Nifty 500 Stocks )**

Gainers				Losers			
Company Name	Last Price	% Gain	Volume	Company Name	Last Price	% Loss	Volume
360 ONE WAM	1146.7	1.67%	476225	ACME Solar	212.64	-3.01%	1164730
AB Capital	358.75	2.68%	4437936	Aegis Logistics	740.95	-2.68%	266858
Adani Enterpris	2265.4	2.14%	2400615	Amber Enterpris	6,562.50	-2.78%	965126
Alivus Life	883.75	1.34%	184086	Anant Raj	526.30	-2.60%	1983137
Authum Invest	2,641.30	1.58%	72144	Asahi India	1,027.10	-2.36%	97560
Bajaj Finance	1,048.00	1.84%	13122765	Aster DM Health	635.1	-2.78%	496528
Bajaj Finserv	2,096.50	2.31%	1742093	Bandhan Bank	140.08	-4.13%	14521678



## Nifty Daily chart with RSI indicator



## BankNifty Daily chart with RSI indicator

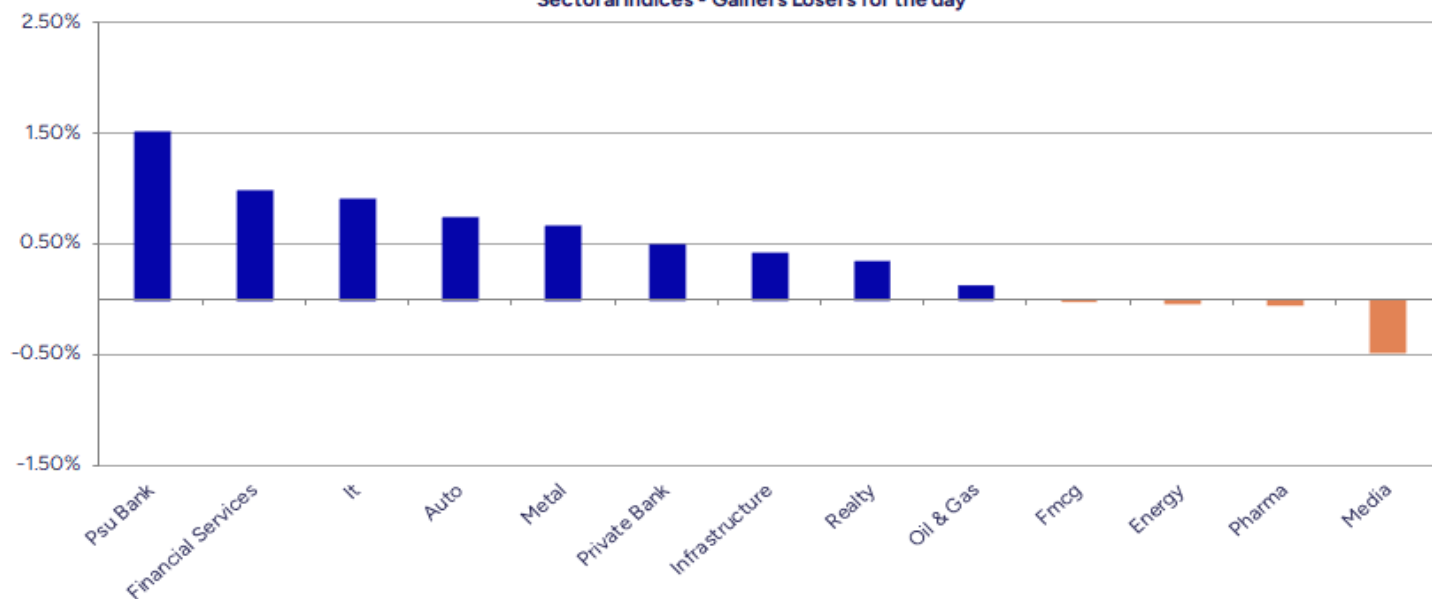


Breakouts - Cross above 200 DMA				Breakdown - Cross below 200 DMA			
Company Name	LCP	Change %	200 DMA	Company Name	LCP	Change %	200 DMA
Enfuse Solution	247.95	7.58	230.49	Richa Info	73.1	-4.63	76.65
Essar Shipping	29.7	3.92	28.58	Alpex Solar	965	-4.39	1009.29
Purv Flexipack	95.9	2.49	93.57	Wise Travel	151	-3.46	156.41
Ritco Logistics	280.15	1.84	275.08	Avalon Technolo	860.6	-3.17	888.81
Cantabil Retail	259.73	1.58	255.7	Astec Life	752.5	-3.00	775.77
Fineotex Chem	25.35	1.52	24.97	Waaree Energies	2860	-2.69	2939.03
Xtglobal	36.32	1.25	35.87	Borosil Renew	550.4	-2.33	563.55
Elgi Equipments	501.05	1.24	494.92	IOL Chemicals	84.46	-2.29	86.44
Global Surfaces	115.8	1.06	114.58	Swelect Energy	657.25	-1.66	668.33
Aesthetik Engin	105	1.05	103.91	Sat Kartar Shop	167.55	-1.62	170.31
Ind Motor Parts	1048.9	0.99	1038.57	Bharat Rasayan	10068	-1.62	10233.84
Sundaram Fin	4832.1	0.84	4791.67	Rajesh Exports	184.45	-1.56	187.37
SBI Card	886.6	0.70	880.46	Advanced Enzyme	305.95	-1.47	310.51
Nidan Laborator	20.2	0.30	20.14	Vindhya Telelin	1474	-1.34	1493.97
Ugro Capital	174.87	0.28	174.38	DCG Cables & Wi	69	-1.29	69.9
Optimus Infra	567.3	0.13	566.59	Guj Heavy Chem	598.25	-1.14	605.15
Sahasra Electro	305	0.04	304.87	Agarwal Toughen	127.6	-1.12	129.05
ABSLLIQUID	1000.01	0.00	1000	S P Apparels	760	-1.03	767.91

\* Stocks crossing above its Simple Moving Average (200DMA)

\* Stocks crossing below its Simple Moving Average (200DMA)

Sectoral Indices - Gainers Losers for the day



Stocks witnessing a volume surge as compared to their 5 day average volume

Watch out for the stocks that have seen a huge spurt in its share price over the last three days

Volume Shockers - NSE						Price Shockers - NSE				
Company name	LCP	% Chg	Volume	Avg Vol *	% Chg	Company name	LCP	Prv Close	% Chg	Volume
Genesys Int	438.75	9.92	1523053	6128	24752	Mahamaya Life	147	118.6	23.95	121200
Shriram Pistons	2846.2	8.57	154755	1128	13617	Keynote Finance	338.75	282.1	20.08	15216
Brigade Ent	882.25	-1.41	623258	6289	9811	Rapicut Carbide	113.33	97.91	15.75	4983
S P Apparels	752.5	-1.26	135488	1468	9127	Pharmasia	79.9	69.03	15.75	483
CMS Info	347.65	-2.1	1587499	23495	6657	Shreeyash Ind	272	235	15.74	521
Supreme Ind	3366.9	0.77	150532	3395	4333	Transchem	122.11	105.5	15.74	44395
InfoBeans Tech	667	10.52	47149	1313	3490	Axis Solutions	74.67	64.52	15.73	13
Zuari Ind.	318.5	3.11	125567	4051	3000	Spice Lounge	55.63	48.07	15.73	270456
ABC India	69.96	-4.32	62003	2431	2451	iStreet Network	56.82	49.1	15.72	19466
Sapphire Foods	245.05	-3.71	75263	3102	2326	Carnation Ind	50.58	43.71	15.72	367
Zuari Agro Chem	293	11.36	194157	8535	2175	Trade Wings	184.8	159.7	15.72	22
Kaynes Tech	4368	-12.26	589697	26893	2093	Steelco Gujarat	37.77	32.64	15.72	2
Azad Engineerin	1625.95	-0.53	277966	13088	2024	Aamcol Tools	157.25	136	15.63	1676
DEE Development	206.7	2.33	118768	6320	1779	Captain Poly	84.49	73.13	15.53	328641
Neyveli Lignite	238.25	0.15	521120	28790	1710	Sinnar Bidi	975	844.8	15.41	247
Avalon Technolo	861.5	-3.77	311851	17560	1676	Parmeshwar Meta	127.79	111.18	14.94	122000
Lloyds Steels	52.11	3.91	4865385	301346	1515	Fruition Vent	40.9	35.62	14.82	3984
NFL	89.05	6.2	291848	19302	1412	Shree Kr Paper	96	84.27	13.92	2374
Metro Brands	1086.7	0.16	98488	6515	1412	Ceinsys Tech	999.85	878.45	13.82	230980
HFCL	69.2	-1.73	10800388	719721	1401	Salona Cotspin	279.6	247.05	13.18	4
Manaksia Steels	59.17	-4.22	17791	1234	1342	Lykis	35.75	31.8	12.42	18884



Nifty 50 stocks - Summary Details											
Symbol	LTP	Chng	% Chng	Volume (lacs)	Turnover (crs.)	52w High	Diff with 52w H	52w Low	Diff with 52w L	365 days % chng	30 days % chng
NIFTY 50	26186.45	152.70	0.59%	2492.41	27489.96	26325.80	0.53%	21743.65	20.43%	1.05%	6.45%
ADANIENT	2263.00	45.10	2.03%	24.01	537.84	2616.50	13.51%	1967.52	15.02%	-10.10%	-11.79%
ADANIPTS	1511.00	5.40	0.36%	11.41	171.66	1549.00	2.45%	1010.75	49.49%	4.22%	16.84%
APOLLOHOSP	7195.50	-5.50	-0.08%	2.60	187.03	8099.50	11.16%	6001.00	19.91%	-7.97%	1.04%
ASIANPAINT	2961.60	4.40	0.15%	9.45	279.76	2985.70	0.81%	2124.75	39.39%	17.71%	19.75%
AXISBANK	1281.80	1.80	0.14%	27.28	348.72	1304.00	1.70%	933.50	37.31%	3.75%	10.30%
BAJAJ-AUTO	9110.00	25.00	0.28%	2.80	254.59	9490.00	4.00%	7089.35	28.50%	1.82%	-0.84%
BAJAJFINSV	2092.90	43.70	2.13%	17.42	363.66	2195.00	4.65%	1551.65	34.88%	-1.56%	27.51%
BAJFINANCE	1046.80	17.70	1.72%	131.23	1375.46	1102.50	5.05%	666.69	57.01%	-1.34%	-84.58%
BEL	406.70	-0.45	-0.11%	117.73	479.98	436.00	6.72%	240.25	69.28%	-3.59%	30.45%
BHARTIARTL	2109.80	6.00	0.29%	29.38	617.43	2174.50	2.98%	1559.50	35.29%	1.44%	29.82%
CIPLA	1520.10	-0.90	-0.06%	8.13	123.73	1673.00	9.14%	1335.00	13.87%	0.63%	-0.84%
COALINDIA	379.95	0.90	0.24%	31.54	119.70	425.90	10.79%	349.25	8.79%	-2.44%	-10.20%
DRREDDY	1276.00	-1.60	-0.13%	10.36	132.37	1405.90	9.24%	1020.00	25.10%	6.82%	4.34%
EICHERMOT	7205.00	105.00	1.48%	5.01	359.25	7284.50	1.09%	4646.00	55.08%	1.09%	46.56%
ETERNAL	291.75	-4.00	-1.35%	177.62	523.48	368.45	20.82%	194.80	49.77%	-8.32%	#VALUE!
GRASIM	2747.00	16.60	0.61%	1.74	47.68	2977.80	7.75%	2276.95	20.64%	-5.85%	0.60%
HCLTECH	1681.00	26.40	1.60%	33.91	569.71	2012.20	16.46%	1302.75	29.03%	7.20%	-12.49%
HDFCBANK	1001.20	4.00	0.40%	128.43	1285.40	1020.50	1.89%	812.15	23.28%	0.46%	-45.40%
HDFCLIFE	769.00	8.20	1.08%	16.93	129.47	820.75	6.31%	584.30	31.61%	3.37%	20.00%
HINDALCO	822.50	11.70	1.44%	42.73	351.32	864.00	4.80%	546.45	50.52%	-4.30%	21.46%
HINDUNILVR	2341.00	-81.00	-3.34%	40.08	940.35	2750.00	14.87%	2136.00	9.60%	0.09%	-0.83%
ICICIBANK	1392.50	5.80	0.42%	49.42	687.23	1500.00	7.17%	1186.00	17.41%	2.99%	5.98%
INDIGO	5367.50	-69.00	-1.27%	67.00	3587.13	6232.50	13.88%	3945.00	36.06%	-4.55%	23.40%
INFY	1613.90	16.30	1.02%	103.45	1673.52	2006.45	19.56%	1307.00	23.48%	7.55%	-15.56%
ITC	404.60	1.55	0.38%	44.20	178.60	491.00	17.60%	390.15	3.70%	-2.63%	-14.71%
JIOFIN	303.85	1.60	0.53%	65.05	196.91	347.35	12.52%	198.65	52.96%	-1.48%	-11.19%
JSWSTEEL	1165.50	14.90	1.29%	23.26	268.68	1223.90	4.77%	880.00	32.44%	-3.72%	15.20%
KOTAKBANK	2156.00	20.60	0.96%	19.32	415.89	2301.90	6.34%	1723.75	25.08%	1.04%	22.03%
LT	4039.00	55.40	1.39%	10.74	432.28	4140.00	2.44%	2965.30	36.21%	0.08%	5.19%
M&M	3708.30	36.70	1.00%	23.93	886.59	3795.00	2.28%	2425.00	52.92%	3.46%	21.28%
MARUTI	16300.00	306.00	1.91%	3.32	537.69	16660.00	2.16%	10725.00	51.98%	2.19%	41.80%
MAXHEALTH	1100.00	16.10	1.49%	18.00	196.33	1314.30	16.31%	940.05	17.02%	-5.41%	4.79%
NESTLEIND	1246.90	4.50	0.36%	9.12	113.15	1311.60	4.93%	1055.00	18.19%	-1.92%	-45.07%
NTPC	323.50	0.55	0.17%	65.73	212.31	375.15	13.77%	292.80	10.48%	-3.65%	-12.11%
ONGC	241.85	-0.38	-0.16%	76.46	184.89	273.50	11.57%	205.00	17.98%	-5.95%	-7.67%
POWERGRID	269.90	0.80	0.30%	55.35	149.31	336.25	19.73%	247.30	9.14%	-6.56%	-18.37%
RELIANCE	1544.60	9.00	0.59%	101.83	1562.89	1581.30	2.32%	1114.85	38.55%	3.43%	16.04%
SBILIFE	2018.80	15.90	0.79%	7.50	151.91	2086.60	3.25%	1372.55	47.08%	1.69%	39.00%
SBIN	971.70	23.60	2.49%	173.48	1668.10	999.00	2.73%	680.00	42.90%	-0.17%	11.03%
SHRIRAMFIN	853.35	25.20	3.04%	121.35	1031.04	872.00	2.14%	493.35	72.97%	3.98%	-73.76%
SUNPHARMA	1805.00	-13.30	-0.73%	17.77	321.26	1910.00	5.50%	1548.00	16.60%	6.56%	1.01%
TATACONSUM	1161.90	13.50	1.18%	6.99	80.92	1202.80	3.40%	882.90	31.60%	-4.10%	20.25%
TMPV	354.00	-2.45	-0.69%	56.66	200.87	820.35	56.85%	352.00	0.57%	-14.52%	#VALUE!
TATASTEEL	167.39	0.62	0.37%	334.98	555.43	186.94	10.46%	122.62	36.51%	-8.70%	13.81%
TCS	3241.00	11.80	0.37%	52.44	1702.20	4494.90	27.90%	2866.60	13.06%	7.04%	-24.95%
TECHM	1569.00	6.70	0.43%	22.23	350.12	1807.70	13.20%	1209.40	29.73%	10.04%	-10.70%
TITAN	3813.00	12.60	0.33%	5.08	193.99	3956.00	3.61%	2925.00	30.36%	2.04%	14.03%
TRENT	4180.00	-35.80	-0.85%	6.80	284.67	7493.05	44.21%	4158.00	0.53%	-10.56%	-38.38%
ULTRACEMCO	11595.00	-13.00	-0.11%	2.27	262.73	13097.00	11.47%	10047.85	15.40%	-2.86%	-2.06%
WIPRO	259.50	2.57	1.00%	78.86	204.76	324.60	20.06%	228.00	13.82%	6.83%	-11.90%

## Disclaimer / Disclosures

### ANALYST CERTIFICATION

I, Mrs. Vaishali Parekh B.com, Research Analyst, author and the name subscribed to this report, hereby certify that all of the views expressed in this research report accurately reflect our views about the subject issuer(s) or securities. We also certify that no part of our compensation was, is, or will be directly or indirectly related to the specific recommendation(s) or view(s) in this report.

Terms & conditions and other disclosures:

Prabhudas Lilladher Pvt. Ltd, Mumbai, India (hereinafter referred to as "PL") is engaged in the business of Stock Broking, Portfolio Manager, Depository Participant and distribution for third party financial products. PL is a subsidiary of Prabhudas Lilladher Advisory Services Pvt Ltd. which has its various subsidiaries engaged in business of commodity broking, investment banking, financial services (margin funding) and distribution of third party financial/other products, details in respect of which are available at [www.plindia.com](http://www.plindia.com)

This document has been prepared by the Research Division of PL and is meant for use by the recipient only as information and is not for circulation. This document is not to be reported or copied or made available to others without prior permission of PL. It should not be considered or taken as an offer to sell or a solicitation to buy or sell any security.

The information contained in this report has been obtained from sources that are considered to be reliable. However, PL has not independently verified the accuracy or completeness of the same. Neither PL nor any of its affiliates, its directors or its employees accepts any responsibility of whatsoever nature for the information, statements and opinion given, made available or expressed herein or for any omission therein.

Recipients of this report should be aware that past performance is not necessarily a guide to future performance and value of investments can go down as well. The suitability or otherwise of any investments will depend upon the recipient's particular circumstances and, in case of doubt, advice should be sought from an independent expert/advisor.

Either PL or its affiliates or its directors or its employees or its representatives or its clients or their relatives may have position(s), make market, act as principal or engage in transactions of securities of companies referred to in this report and they may have used the research material prior to publication.

PL may from time to time solicit or perform investment banking or other services for any company mentioned in this document.

PL is registered as Research Analyst under Securities and Exchange Board of India (Research Analysts) Regulations, 2014 PL submits that no material disciplinary action has been taken on us by any Regulatory Authority impacting Equity Research Analysis activities.

PL or its research analysts or its associates or his relatives do not have any financial interest in the subject company.

PL or its research analysts or its associates or his relatives do not have actual/beneficial ownership of one per cent or more securities of the subject company at the end of the month immediately preceding the date of publication of the research report.

PL or its research analysts or its associates or his relatives do not have any material conflict of interest at the time of publication of the research report.

PL or its associates might have received compensation from the subject company in the past twelve months.

PL or its associates might have managed or co-managed public offering of securities for the subject company in the past twelve months or mandated by the subject company for any other assignment in the past twelve months.

PL or its associates might have received any compensation for investment banking or merchant banking or brokerage services from the subject company in the past twelve months.

PL or its associates might have received any compensation for products or services other than investment banking or merchant banking or brokerage services from the subject company in the past twelve months PL or its associates might have received any compensation or other benefits from the subject company or third party in connection with the research report.

PL encourages independence in research report preparation and strives to minimize conflict in preparation of research report. PL or its analysts did not receive any compensation or other benefits from the subject Company or third party in connection with the preparation of the research report. PL or its Research Analysts do not have any material conflict of interest at the time of publication of this report.

It is confirmed that Mrs.Vaishali Parekh B.com, Research Analyst of this report has not received any compensation from the companies mentioned in the report in the preceding twelve months compensation of our Research Analysts is not based on any specific merchant banking, investment banking or brokerage service transactions.

The Research analysts for this report certifies that all of the views expressed in this report accurately reflect his or her personal views about the subject company or companies and its or their securities, and no part of his or her compensation was, is or will be, directly or indirectly related to specific recommendations or views expressed in this report.

The research analysts for this report has not served as an officer, director or employee of the subject company PL or its research analysts have not engaged in market making activity for the subject company

Our sales people, traders, and other professionals or affiliates may provide oral or written market commentary or trading strategies to our clients that reflect opinions that are contrary to the opinions expressed herein, and our proprietary trading and investing businesses may make investment decisions that are inconsistent with the recommendations expressed herein. In reviewing these materials, you should be aware that any or all of the foregoing, among other things, may give rise to real or potential conflicts of interest.

PL and its associates, their directors and employees may (a) from time to time, have a long or short position in, and buy or sell the securities of the subject company or (b) be engaged in any other transaction involving such securities and earn brokerage or other compensation or act as a market maker in the financial instruments of the subject company or act as an advisor or lender/borrower to the subject company or may have any other potential conflict of interests with respect to any recommendation and other related information and opinions.