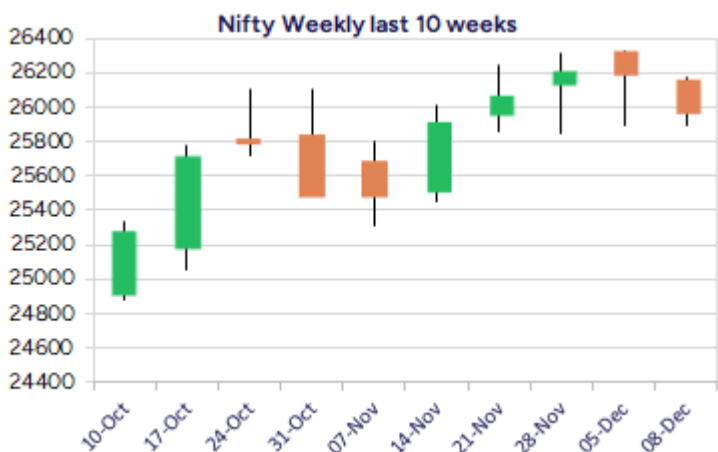
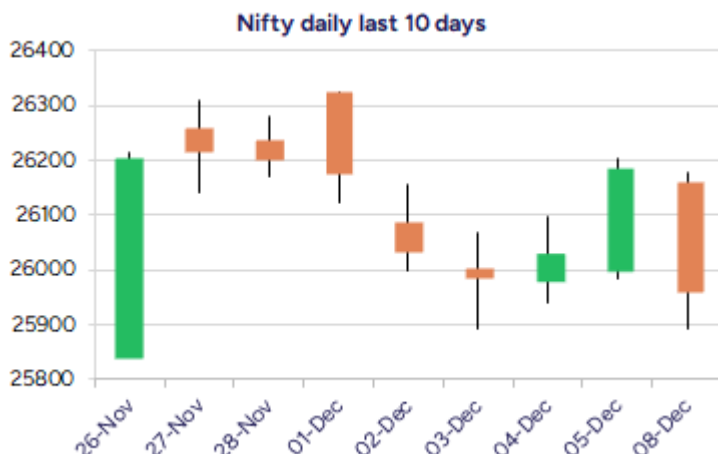


Date: 09th December 2025

* Sensex 85102.69 - 609.68

* Nifty 25960.55 - 225.90

* Bank Nifty 59238.55 - 538.65



*Blue candle → Close rate > Open rate * Red candle → Close rate < Open rate

Market Preview

Nifty erases gains; ends below 26000 zone

Nifty with heavy profit booking witnessed lost the momentum to slip below the 26000 zone with the broader markets tumbling down below the important technical levels. BankNifty indicated a huge bearish candle to erase the gains witnessed in the previous session and has slightly shaken the bias as of now ending near the 59200 zone. The market breadth was very much weak with the advance decline indicating a ratio of almost 1:5 at close.

Market Forecast

Nifty daily range 25800 - 26200

Nifty witnessed heavy profit booking with a huge bearish candle to erase the gains witnessed in the last 2 sessions with the broader markets subjected to intensified selling pressure as the day progressed to end the index below the 26000 zone with bias slightly shaken. As we have mentioning, the index would have the important near-term support near the significant 50EMA zone at 25750-25800 band, which needs to be sustained to maintain the overall trend intact.

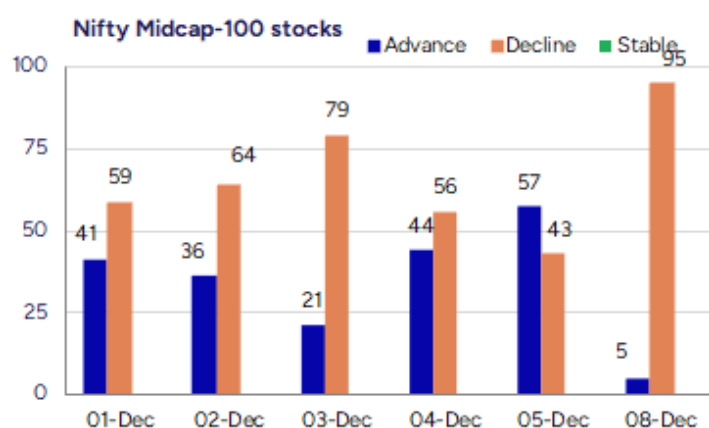
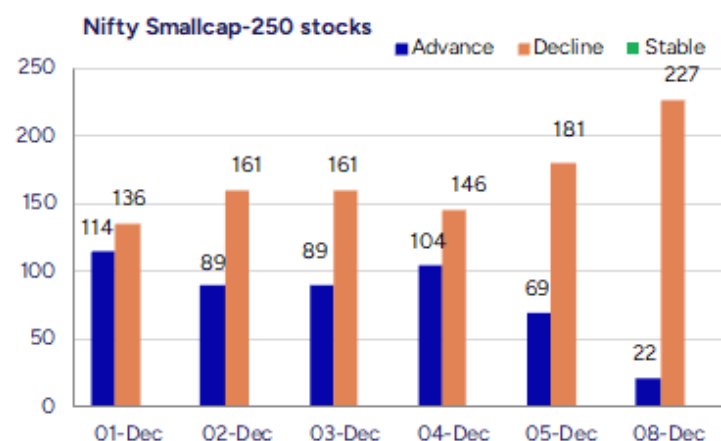
BankNifty eroded the gains witnessed in the previous session with heavy profit booking witnessed to end near the 59200-zone having the bias maintained intact with overall consolidation visible having the near-term support at 58800 level. As said earlier, the index would need a decisive breach above the 60100 zone to break out of the range and thereafter, expect for higher targets of 61300 and 63000 levels in the coming days.

The support for the day is seen at 25800 levels, while the resistance is seen at 26200 levels. BankNifty would have the daily range of 58800-59800 levels.

Indices	Period	Closing	% Chng	Trend	Reversal	2 Sup	1 Sup	Pivot	1 Res	2 Res
Nifty	Daily	25960.55	-0.86%	-1	26157.75	25724	25842	26011	26129	26297
	Weekly	26186.45	-0.06%	4	26062.10	25701	25944	26135	26378	26569
	Monthly	26202.95	1.87%	2	25767.20	24953	25578	25944	26569	26935
Bank Nifty	Daily	59238.55	-0.90%	-5	59956.10	58645	58942	59327	59624	60010
	Weekly	59777.20	0.04%	10	59260.20	58422	59099	59606	60284	60791
	Monthly	59752.70	3.42%	2	58620.10	56200	57976	58935	60712	61671
Sensex	Daily	85102.69	-0.71%	-1	85653.10	84386	84745	85234	85592	86081
	Weekly	85712.37	0.01%	4	85185.15	84188	84950	85527	86289	86866
	Monthly	85706.67	2.11%	2	84235.40	81429	83568	84811	86950	88193

Gainers - Losers (Nifty 500 Stocks)

Gainers				Losers			
Company Name	Last Price	% Gain	Volume	Company Name	Last Price	% Loss	Volume
3M India	34915	2.32%	12250	Data Patterns	2,587.40	-6.47%	659368
Home First	1,118.20	2.20%	618679	Bharat Dynamics	1423.1	-5.91%	1865124
Jindal Stainles	766.85	1.52%	438548	BLS Internation	314.90	-5.36%	1269439
ITI	306.00	1.46%	3210915	Aditya Birla Re	1,657.50	-5.30%	448555
Can Fin Homes	913.00	1.35%	866726	Bharat Elec	386.40	-5.04%	25577491
Aadhar Housing	485.65	0.88%	261142	Anant Raj	503.15	-4.40%	3342052
Coromandel Int	2,314.70	0.63%	310229	BEML	1641.3	-4.03%	304178



Nifty Daily chart with RSI indicator



BankNifty Daily chart with RSI indicator

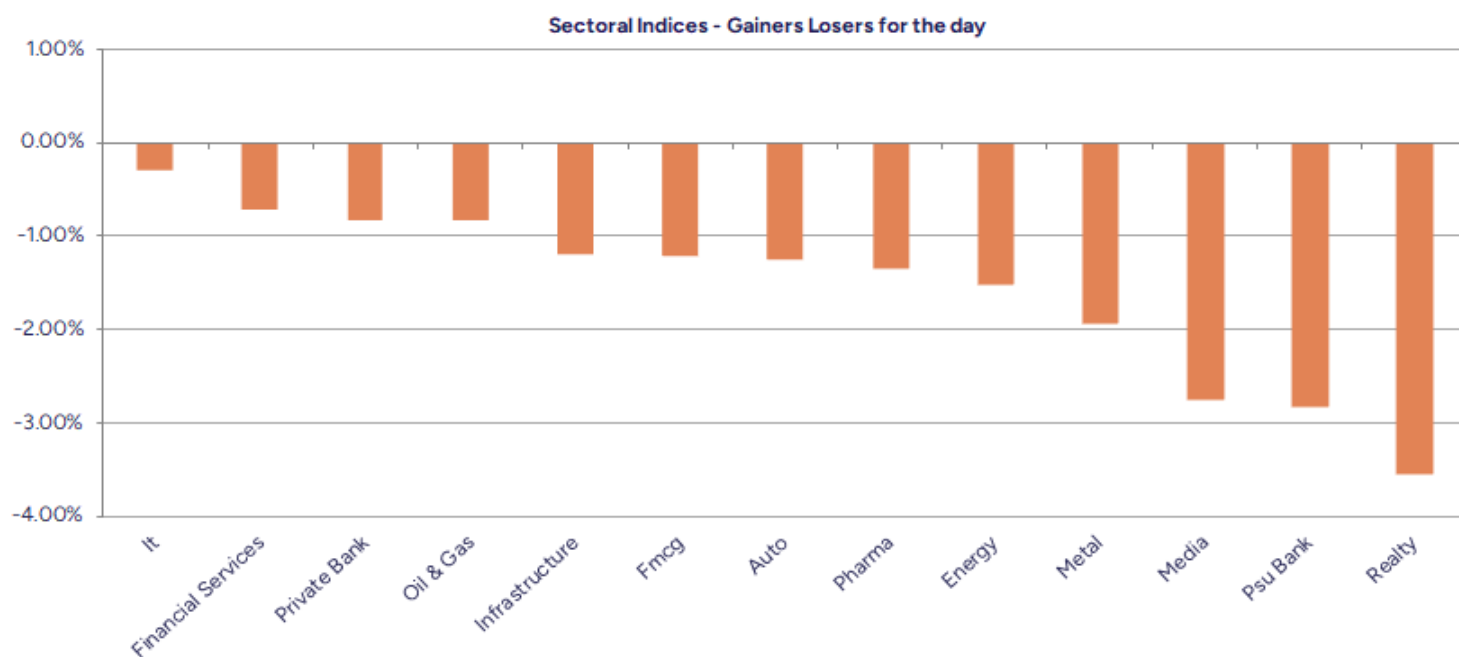


Breakouts - Cross above 200 DMA			
Company Name	LCP	Change %	200 DMA
Chavda Infra	129.95	6.00	122.6
Thaai Casting	109.5	2.49	106.84
Matrimony.com	526.95	2.28	515.2
Cyber Media	16.68	0.30	16.63
Par Drugs	101.8	0.08	101.72

Breakdown - Cross below 200 DMA			
Company Name	LCP	Change %	200 DMA
Modison	141	-6.69	151.11
Honasa Consumer	256.2	-6.32	273.49
Viviana Power	680	-6.32	725.84
Shubhshree Bio	367	-6.14	391.02
Sahasra Electro	288.2	-5.29	304.31
Sun Pharma Adv	138.9	-4.52	145.47
Engineers India	189.92	-4.14	198.12
Airo Lam	99.58	-4.09	103.83
Nidan Laborator	19.3	-4.08	20.12
Elin Electronic	165.2	-3.97	172.03
Aesthetik Engin	100.05	-3.91	104.12
Summit Sec	1960	-3.82	2037.83
DDEVPLASTIK	275.6	-3.81	286.51
HUDCO	211.75	-3.75	219.99
Denta Water	331.6	-3.66	344.2
Indo Rama Synth	46.64	-3.60	48.38
Barak Vally Cem	40.99	-3.55	42.5
Responsive Ind	195	-3.42	201.91

* Stocks crossing above its Simple Moving Average (200DMA)

* Stocks crossing below its Simple Moving Average (200DMA)



Stocks witnessing a volume surge as compared to their 5 day average volume

Watch out for the stocks that have seen a huge spurt in its share price over the last three days

Volume Shockers - NSE					
Company name	LCP	% Chg	Volume	Avg Vol *	% Chg
Shriram Pistons	2837.25	8.23	154758	1128	13617
CMS Info	348.55	-1.84	1587499	23495	6657
Supreme Ind	3367.65	0.79	150533	3395	4333
Zuari Ind.	319.3	3.37	125567	4051	3000
Sapphire Foods	246.35	-3.2	75398	3102	2331
Zuari Agro Chem	295.1	12.16	194742	8535	2182
Kaynes Tech	4358.6	-12.45	589916	26893	2094
Azad Engineerin	1627	-0.46	277966	13088	2024
Avalon Technolo	862.5	-3.66	311866	17560	1676
Lloyds Steels	52.59	4.87	4865388	301346	1515
Metro Brands	1089.85	0.45	98488	6515	1412
Torrent Pharma	3781.55	-0.53	24092	1963	1127
Syrma SGS	742.85	-5.59	195570	15973	1124
Schneider Elect	759.9	-0.37	265947	22071	1105
Sri Adhikari	1366.55	4.99	36618	3056	1098
AFFLE 3I	1631.75	-0.9	181798	15602	1065
Route	681.15	-5.16	58602	5788	912
CHOKSI ASIA	125.5	9.13	9605	1000	860
Rategain Travel	664.75	-2.72	167079	18551	801
M&M Financial	367.45	5.89	1038326	139511	644
Regency Ceramic	44.47	-0.49	7888	1104	614

Price Shockers - NSE				
Company name	LCP	Prv Close	% Chg	Volume
Droneacharya	44.22	33.23	33.07	585000
Rolex Rings	122.9	101.85	20.67	1599838
Aryavan Enter	42.99	36.03	19.32	62456
Shriram Pistons	3051.45	2610	16.91	157438
Rapicut Carbide	118.99	102.8	15.75	40347
Shreeyash Ind	285.6	246.75	15.74	105
Transchem	128.21	110.77	15.74	9480
Beryl Securitie	36.17	31.25	15.74	3535
Stallion India	193.35	167.05	15.74	22285
Pharmasia	83.89	72.48	15.74	6592
Axis Solutions	78.4	67.74	15.74	147
iStreet Network	59.66	51.55	15.73	470519
Trade Wings	194	167.65	15.72	61
Carnation Ind	53.1	45.89	15.71	195
Steelco Gujarat	39.65	34.27	15.7	1
Team India	306.95	265.35	15.68	10819
Ujaas Energy	161.6	139.7	15.68	2091
Sugal Damani	78.6	68.01	15.57	3574
Dredging Corp	1002.4	869.3	15.31	484109
Riddhi Steel	184.5	161.5	14.24	1500
Shree Kr Paper	100.15	87.98	13.83	1930

Nifty 50 stocks - Summary Details											
Symbol	LTP	Chng	% Chng	Volume (lacs)	Turnover (crs.)	52w High	Diff with 52w H	52w Low	Diff with 52w L	30 days % chng	365 days % chng
NIFTY 50	25960.55	-225.90	-0.86%	3207.23	31676.52	26325.80	1.39%	21743.65	19.39%	2.30%	-
ADANIENT	2212.00	-53.40	-2.36%	9.40	209.53	2616.50	15.46%	1967.52	12.43%	-6.38%	-
ADANIPTS	1480.30	-29.10	-1.93%	10.70	159.22	1549.00	4.44%	1010.75	46.46%	4.50%	-
APOLLOHOSP	7100.00	-89.50	-1.24%	2.87	204.68	8099.50	12.34%	6001.00	18.31%	-7.95%	-
ASIANPAINT	2924.00	-44.50	-1.50%	9.84	288.60	2985.70	2.07%	2124.75	37.62%	19.38%	-
AXISBANK	1269.90	-12.60	-0.98%	29.69	378.00	1304.00	2.62%	933.50	36.04%	4.56%	-
BAJAJ-AUTO	9035.00	-74.00	-0.81%	2.99	269.87	9490.00	4.79%	7089.35	27.44%	4.09%	-
BAJAJFINSV	2057.10	-39.40	-1.88%	9.04	186.78	2195.00	6.28%	1551.65	32.58%	1.12%	-
BAJFINANCE	1026.40	-21.60	-2.06%	51.89	533.99	1102.50	6.90%	668.55	53.53%	-0.85%	-
BEL	386.90	-20.00	-4.92%	255.91	1003.02	436.00	11.26%	240.25	61.04%	-1.99%	-
BHARTIARTL	2087.00	-21.80	-1.03%	43.27	904.58	2174.50	4.02%	1559.50	33.82%	-0.21%	-
CIPLA	1497.00	-23.80	-1.56%	12.64	190.32	1673.00	10.52%	1335.00	12.13%	1.16%	-
COALINDIA	376.85	-3.10	-0.82%	39.11	147.55	421.50	10.59%	349.25	7.90%	0.64%	-
DRREDDY	1266.00	-9.20	-0.72%	14.36	182.34	1405.90	9.95%	1020.00	24.12%	6.27%	-
EICHERMOT	7135.00	-73.00	-1.01%	2.74	195.80	7284.50	2.05%	4646.00	53.57%	4.01%	-
ETERNAL	285.05	-7.35	-2.51%	851.28	2460.54	368.45	22.64%	194.80	46.33%	-6.73%	-
GRASIM	2735.00	-12.00	-0.44%	7.16	196.75	2977.80	8.15%	2276.95	20.12%	-4.68%	-
HCLTECH	1685.00	2.00	0.12%	27.02	456.40	2012.20	16.26%	1302.75	29.34%	10.06%	-
HDFCBANK	1001.80	-1.50	-0.15%	129.01	1292.94	1020.50	1.83%	812.15	23.35%	1.83%	-
HDFCLIFE	762.30	-6.00	-0.78%	37.75	292.12	820.75	7.12%	584.30	30.46%	3.48%	-
HINDALCO	819.50	-3.75	-0.46%	43.54	359.11	864.00	5.15%	546.45	49.97%	-0.98%	-
HINDUNILVR	2318.00	-20.60	-0.88%	18.98	440.85	2750.00	15.71%	2136.00	8.52%	-4.38%	-
ICICIBANK	1387.50	-5.00	-0.36%	78.26	1086.95	1500.00	7.50%	1186.00	16.99%	4.16%	-
INDIGO	4907.50	-463.00	-8.62%	158.25	7924.25	6232.50	21.26%	3945.00	24.40%	-4.73%	-
INFY	1608.00	-8.20	-0.51%	75.50	1220.75	2006.45	19.86%	1307.00	23.03%	10.10%	-
ITC	402.00	-2.95	-0.73%	60.57	244.02	491.00	18.13%	390.15	3.04%	-0.97%	-
JIOFIN	296.15	-7.60	-2.50%	124.32	370.64	347.30	14.73%	198.65	49.08%	0.61%	-
JSWSTEEL	1119.10	-43.10	-3.71%	17.27	195.30	1223.90	8.56%	880.00	27.17%	-1.63%	-
KOTAKBANK	2129.80	-25.10	-1.16%	29.92	640.31	2301.90	7.48%	1723.75	23.56%	2.78%	-
LT	3999.50	-38.70	-0.96%	11.28	451.24	4140.00	3.39%	2965.30	34.88%	2.90%	-
M&M	3679.00	-38.10	-1.02%	15.00	553.49	3795.00	3.06%	2425.00	51.71%	3.79%	-
MARUTI	16178.00	-104.00	-0.64%	2.21	356.75	16660.00	2.89%	10725.00	50.84%	5.91%	-
MAXHEALTH	1077.00	-20.40	-1.86%	30.15	326.37	1314.30	18.06%	940.05	14.57%	-3.60%	-
NESTLEIND	1215.00	-31.90	-2.56%	15.35	187.83	1311.60	7.37%	1055.00	15.17%	-1.43%	-
NTPC	318.85	-4.45	-1.38%	79.07	253.20	373.95	14.73%	292.80	8.90%	-2.21%	-
ONGC	238.10	-3.13	-1.30%	52.86	126.69	273.50	12.94%	205.00	16.15%	-4.41%	-
POWERGRID	265.10	-4.70	-1.74%	102.03	271.51	336.25	21.16%	247.30	7.20%	-3.31%	-
RELIANCE	1539.90	-0.70	-0.05%	113.01	1741.21	1581.30	2.62%	1114.85	38.13%	4.58%	-
SBILIFE	2023.20	-0.50	-0.02%	10.50	212.59	2086.60	3.04%	1372.55	47.40%	2.65%	-
SBIN	955.40	-16.10	-1.66%	153.86	1473.57	999.00	4.36%	680.00	40.50%	1.45%	-
SHRIRAMFIN	833.35	-21.55	-2.52%	41.18	346.81	872.00	4.43%	493.35	68.92%	7.33%	-
SUNPHARMA	1794.90	-10.40	-0.58%	24.10	432.64	1910.00	6.03%	1548.00	15.95%	6.82%	-
TATACONSUM	1145.00	-17.90	-1.54%	5.90	67.98	1202.80	4.81%	882.90	29.69%	-1.39%	-
TMPV	347.85	-5.75	-1.63%	71.86	251.71	820.35	57.60%	345.80	0.59%	-13.01%	-
TATASTEEL	163.50	-3.61	-2.16%	157.72	259.82	186.94	12.54%	122.62	33.34%	-6.79%	-
TCS	3237.90	-0.30	-0.01%	25.45	823.70	4494.90	27.97%	2866.60	12.95%	8.29%	-
TECHM	1590.00	19.20	1.22%	28.34	449.22	1807.70	12.04%	1209.40	31.47%	11.47%	-
TITAN	3760.50	-52.80	-1.38%	5.46	207.00	3956.00	4.94%	2925.00	28.56%	-0.01%	-
TRENT	4080.00	-103.10	-2.46%	10.28	423.40	7493.05	45.55%	4075.10	0.12%	-10.25%	-
ULTRACEMCO	11538.00	-59.00	-0.51%	1.48	171.46	13097.00	11.90%	10047.85	14.83%	-1.88%	-
WIPRO	260.83	0.92	0.35%	96.84	253.12	324.60	19.65%	228.00	14.40%	9.24%	-

Disclaimer / Disclosures

ANALYST CERTIFICATION

I, Mrs. Vaishali Parekh B.com, Research Analyst, author and the name subscribed to this report, hereby certify that all of the views expressed in this research report accurately reflect our views about the subject issuer(s) or securities. We also certify that no part of our compensation was, is, or will be directly or indirectly related to the specific recommendation(s) or view(s) in this report.

Terms & conditions and other disclosures:

Prabhudas Lilladher Pvt. Ltd, Mumbai, India (hereinafter referred to as "PL") is engaged in the business of Stock Broking, Portfolio Manager, Depository Participant and distribution for third party financial products. PL is a subsidiary of Prabhudas Lilladher Advisory Services Pvt Ltd. which has its various subsidiaries engaged in business of commodity broking, investment banking, financial services (margin funding) and distribution of third party financial/other products, details in respect of which are available at www.plindia.com

This document has been prepared by the Research Division of PL and is meant for use by the recipient only as information and is not for circulation. This document is not to be reported or copied or made available to others without prior permission of PL. It should not be considered or taken as an offer to sell or a solicitation to buy or sell any security.

The information contained in this report has been obtained from sources that are considered to be reliable. However, PL has not independently verified the accuracy or completeness of the same. Neither PL nor any of its affiliates, its directors or its employees accepts any responsibility of whatsoever nature for the information, statements and opinion given, made available or expressed herein or for any omission therein.

Recipients of this report should be aware that past performance is not necessarily a guide to future performance and value of investments can go down as well. The suitability or otherwise of any investments will depend upon the recipient's particular circumstances and, in case of doubt, advice should be sought from an independent expert/advisor.

Either PL or its affiliates or its directors or its employees or its representatives or its clients or their relatives may have position(s), make market, act as principal or engage in transactions of securities of companies referred to in this report and they may have used the research material prior to publication.

PL may from time to time solicit or perform investment banking or other services for any company mentioned in this document.

PL is registered as Research Analyst under Securities and Exchange Board of India (Research Analysts) Regulations, 2014 PL submits that no material disciplinary action has been taken on us by any Regulatory Authority impacting Equity Research Analysis activities.

PL or its research analysts or its associates or his relatives do not have any financial interest in the subject company.

PL or its research analysts or its associates or his relatives do not have actual/beneficial ownership of one per cent or more securities of the subject company at the end of the month immediately preceding the date of publication of the research report.

PL or its research analysts or its associates or his relatives do not have any material conflict of interest at the time of publication of the research report.

PL or its associates might have received compensation from the subject company in the past twelve months.

PL or its associates might have managed or co-managed public offering of securities for the subject company in the past twelve months or mandated by the subject company for any other assignment in the past twelve months.

PL or its associates might have received any compensation for investment banking or merchant banking or brokerage services from the subject company in the past twelve months.

PL or its associates might have received any compensation for products or services other than investment banking or merchant banking or brokerage services from the subject company in the past twelve months PL or its associates might have received any compensation or other benefits from the subject company or third party in connection with the research report.

PL encourages independence in research report preparation and strives to minimize conflict in preparation of research report. PL or its analysts did not receive any compensation or other benefits from the subject Company or third party in connection with the preparation of the research report. PL or its Research Analysts do not have any material conflict of interest at the time of publication of this report.

It is confirmed that Mrs.Vaishali Parekh B.com, Research Analyst of this report has not received any compensation from the companies mentioned in the report in the preceding twelve months compensation of our Research Analysts is not based on any specific merchant banking, investment banking or brokerage service transactions.

The Research analysts for this report certifies that all of the views expressed in this report accurately reflect his or her personal views about the subject company or companies and its or their securities, and no part of his or her compensation was, is or will be, directly or indirectly related to specific recommendations or views expressed in this report.

The research analysts for this report has not served as an officer, director or employee of the subject company PL or its research analysts have not engaged in market making activity for the subject company

Our sales people, traders, and other professionals or affiliates may provide oral or written market commentary or trading strategies to our clients that reflect opinions that are contrary to the opinions expressed herein, and our proprietary trading and investing businesses may make investment decisions that are inconsistent with the recommendations expressed herein. In reviewing these materials, you should be aware that any or all of the foregoing, among other things, may give rise to real or potential conflicts of interest.

PL and its associates, their directors and employees may (a) from time to time, have a long or short position in, and buy or sell the securities of the subject company or (b) be engaged in any other transaction involving such securities and earn brokerage or other compensation or act as a market maker in the financial instruments of the subject company or act as an advisor or lender/borrower to the subject company or may have any other potential conflict of interests with respect to any recommendation and other related information and opinions.