

Date: 11th December 2025

* Sensex 84391.27 -275.01

* Nifty 25758.00 -81.65

* Bank Nifty 58960.40 -261.95

Market Preview

Nifty at crucial juncture of 25730 zone

Nifty once again gave in to slip towards the important and crucial support zone of 25730 level with bias precariously placed and would need a decent revival to establish conviction for further upward move. BankNifty witnessed profit bookign during the session to arrive near the important support zone of 58800 level which needs to be sustained to maintain the overall bias intact. The market breadth was slightly on the weaker side with the advance decline indicating a ratio of 2:3 at close.

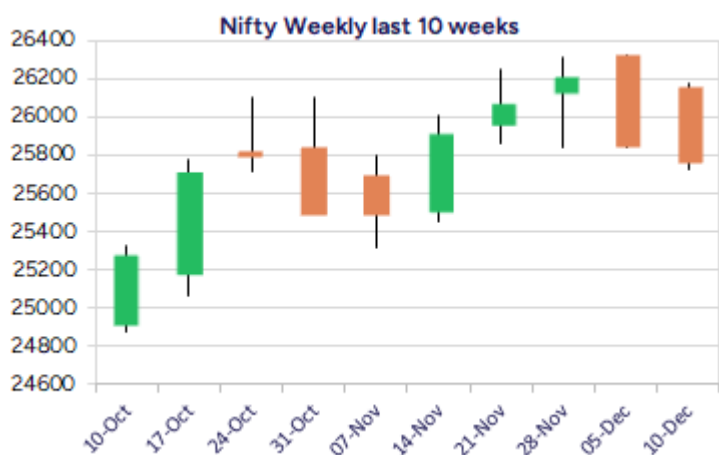
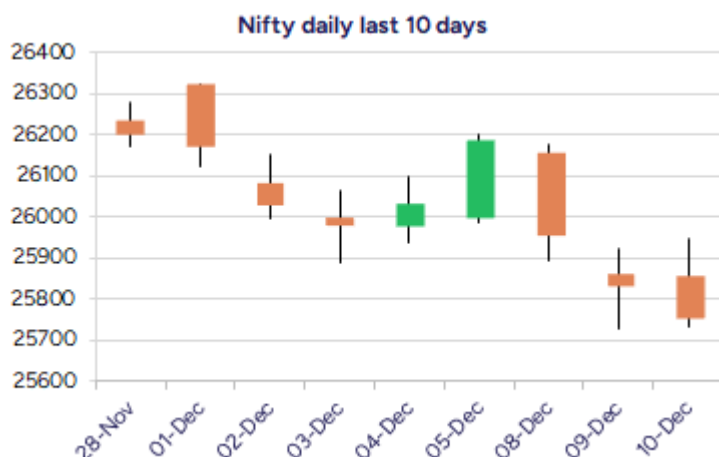
Market Forecast

Nifty daily range 25600 - 26000

Nifty once again witnessing a weak candle, has slipped down with profit booking dragging the index having arrived near the crucial and important support near the 50EMA level at 25730 zone which needs to be sustained to maintain the overall bias intact. The index is precariously placed and would need a revival, failing which the trend would turn into a cautious mode with next major support positioned near the 25300 zone. On the upside, a decisive breach above the 26000 zone is necessary to sustain the positive trend and expect for further gains in the coming days.

BankNifty witnessed a weak session with profit booking taking the index to slide once again towards the important and crucial support zone at 58800 zone below which the bias would turn slightly weak. On the upside, the index would need a major move past the 60000 zone to establish conviction and thereafter, expect for further upward move for targets of 61300 and 63000 levels in the coming days.

The support for the day is seen at 25600 levels, while the resistance is seen at 26000 levels. BankNifty would have the daily range of 58500-59500 levels.



*Blue candle → Close rate > Open rate * Red candle → Close rate < Open rate

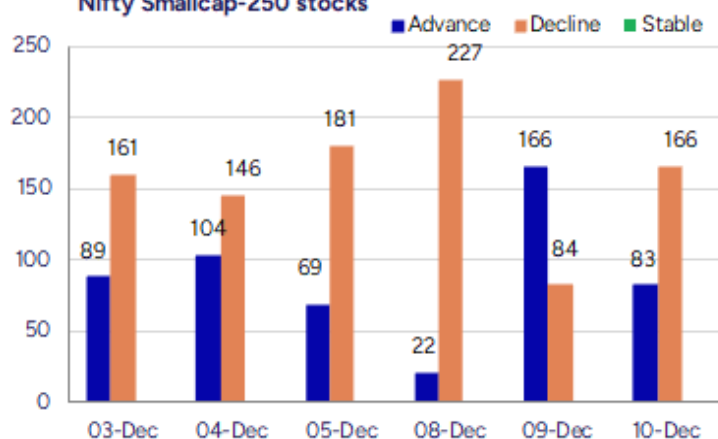
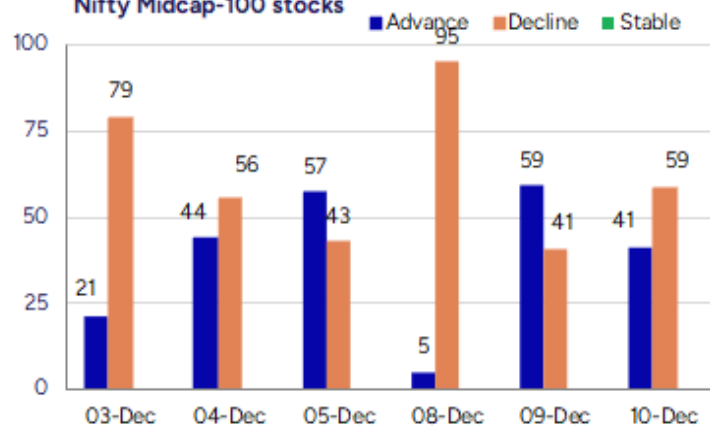
Indices	Period	Closing	% Chng	Trend	Reversal	2 Sup	1 Sup	Pivot	1 Res	2 Res
Nifty	Daily	25758.00	-0.32%	-3	25990.90	25600	25679	25813	25892	26027
	Weekly	26186.45	-0.06%	4	26062.10	25701	25944	26135	26378	26569
	Monthly	26202.95	1.87%	2	25767.20	24953	25578	25944	26569	26935
Bank Nifty	Daily	58960.40	-0.44%	-7	59548.30	58498	58729	59085	59316	59672
	Weekly	59777.20	0.04%	10	59260.20	58422	59099	59606	60284	60791
	Monthly	59752.70	3.42%	2	58620.10	56200	57976	58935	60712	61671
Sensex	Daily	84391.27	-0.32%	-3	85195.00	83868	84130	84575	84837	85282
	Weekly	85712.37	0.01%	4	85185.15	84188	84950	85527	86289	86866
	Monthly	85706.67	2.11%	2	84235.40	81429	83568	84811	86950	88193

Gainers - Losers (Nifty 500 Stocks)
Gainers

Company Name	Last Price	% Gain	Volume
Welspun Living	140.81	6.80%	28631513
Shree Renuka	26.87	3.31%	11446287
Raymond Life	1181.6	2.77%	239251
Valor Estate	120.46	2.68%	9986314
Ramco Cements	1,020.80	2.13%	494997
R R Kabel	1,413.20	2.04%	332819
Vardhman Text	446.05	1.81%	130995

Losers

Company Name	Last Price	% Loss	Volume
BSE Limited	2,581.70	-4.94%	4916006
Coromandel Int	2283.5	-3.57%	234219
Data Patterns	2,543.20	-3.06%	322148
COFORGE	1,820.20	-2.84%	1182012
Delhivery	404.65	-2.56%	2073346
Astral Ltd	1392.4	-2.52%	402007
CDSL	1479.3	-2.50%	1601880

Nifty Smallcap-250 stocks

Nifty Midcap-100 stocks


Nifty Daily chart with RSI indicator



BankNifty Daily chart with RSI indicator



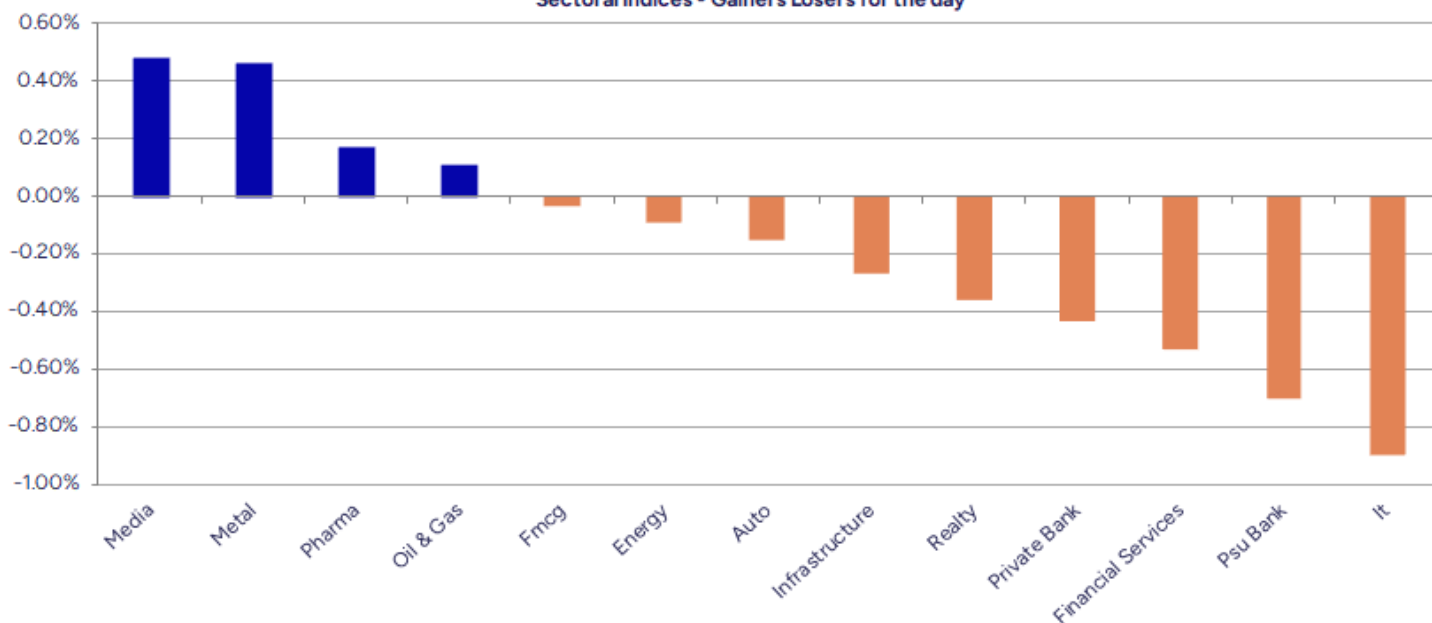
Breakouts - Cross above 200 DMA			
Company Name	LCP	Change %	200 DMA
Prizor Viztech	252.15	8.98	231.37
Canarys Automat	31.95	6.01	30.14
Shree Vasu	700	4.66	668.84
Rajdarshan Ind	48.6	3.74	46.85
Dolat Algotech	89.04	3.62	85.93
Agro Phos India	38.38	3.45	37.1
DocMode Health	76.1	3.06	73.84
Metro	1186.8	2.57	1157.09
Global Surfaces	116.25	1.60	114.42
Creative Graphi	194.6	1.59	191.56
Himadri Special	466.5	1.54	459.41
Ken Enterprises	46	1.43	45.35
Laxmi Goldorna	285.6	1.23	282.12
Ramco Cements	1020.8	1.11	1009.64
Berger Paints	549.1	0.82	544.66
PPAP Automotive	217.87	0.52	216.75
Ind Motor Parts	1044.4	0.48	1039.45
Incredible Ind	40.66	0.40	40.5

* Stocks crossing above its Simple Moving Average (200DMA)

Breakdown - Cross below 200 DMA			
Company Name	LCP	Change %	200 DMA
ALUWIND INFRA	70.35	-4.38	73.57
TVS Electronics	426	-3.92	443.39
Hubtown	254	-3.68	263.71
Krishna Institu	663.2	-2.05	677.11
Avalon Technolo	873.95	-2.02	891.96
Angel One	2485.6	-1.80	2531.16
Premier Explo	498.75	-1.75	507.65
Astral Ltd	1392.4	-1.73	1416.87
HT Media	21.76	-1.63	22.12
Bombay Burmah	1856.5	-1.55	1885.64
Bharti Hexacom	1670	-1.45	1694.6
Indraprastha	449	-1.39	455.32
Mamata Machiner	412.05	-1.31	417.5
Fineotex Chem	24.67	-1.04	24.93
Sona BLW	471.55	-0.99	476.28
Peria Karamalai	725.05	-0.95	731.98
Mirae NiftyMid	47.29	-0.90	47.72
Mangalam Cement	746.25	-0.88	752.88

* Stocks crossing below its Simple Moving Average (200DMA)

Sectoral Indices - Gainers Losers for the day



Stocks witnessing a volume surge as compared to their 5 day average volume

Watch out for the stocks that have seen a huge spurt in its share price over the last three days

Volume Shockers - NSE					
Company name	LCP	% Chg	Volume	Avg Vol *	% Chg
LLOYDS ENTER	56.15	-1.82	15749835	87516	17897
GPT Infra	104.15	-0.81	568009	4943	11391
Nicco Parks	84.9	-0.67	260326	3378	7607
Kaynes Tech	3875	-10.62	1205031	26893	4381
Systematix Corp	165	0.86	128803	2953	4261
Jyoti CNC Auto	944.25	1.52	361067	14788	2342
Omaxe	65.9	1.87	103905	5344	1844
SOLARA ACTIVE P	608.95	0.35	66027	3837	1621
Alkem Lab	5595.35	-1.22	24628	1459	1588
EID Parry	1034.2	2.28	138413	9129	1416
STC India	116.5	4.77	38112	2575	1380
Carraro India	513.4	-0.48	99706	6778	1371
Go Fashion	472.45	2.15	74055	5414	1268
UltraTechCement	11315	-0.83	104726	7738	1253
Ecoboard Inds	44.4	13.01	53698	4008	1240
PPL	246.5	6.27	41699	3163	1218
Nalin Leasing	46.25	2.41	40979	3363	1119
Acknit Industri	250	0.16	11329	1025	1005
Simran Farms	192.5	4.28	21350	2013	960
Mawana Sugars	85.22	5.48	14427	1400	931
Inox Wind	119.7	-3.7	3105981	301431	930

Price Shockers - NSE				
Company name	LCP	Prv Close	% Chg	Volume
Sheetal Cool Pr	269	197.7	36.06	87082
Ecoboard Inds	44.4	34.11	30.17	53698
Droneacharya	51.07	40.2	27.04	166000
RR Metalmakers	35.6	28.56	24.65	1980
Rajshree Sugars	38.18	31.38	21.67	19547
Jhaveri Credits	207	178.4	16.03	2474
Safecure Ser	42.5	36.67	15.9	54000
Transchem	141.35	122.11	15.76	3732
Stallion India	213.15	184.15	15.75	18748
Shukra Pharma	46.44	40.13	15.72	60749
Trade Wings	213.85	184.8	15.72	5
Beryl Securitie	39.84	34.45	15.65	5926
IITL Projects	65.45	56.68	15.47	209
Parshwanath	104.15	90.3	15.34	1
Riddhi Steel	202.1	176	14.83	4500
Retina Paints	70.3	61.27	14.74	30000
Bloom Ind	38.99	34.01	14.64	39
Shree Kr Paper	109.4	96	13.96	3448
GKB Ophthalmics	53.89	47.29	13.96	3287
Valiant Comm	750	658.25	13.94	23502
Dredging Corp	999	877.55	13.84	140838

Nifty 50 stocks - Summary Details											
Symbol	LTP	Chng	% Chng	Volume (lacs)	Turnover (crs.)	52w High	Diff with 52w H	52w Low	Diff with 52w L	30 days % chng	365 days % chng
NIFTY 50	25758.00	-81.65	-0.32%	2079.23	21974.34	26325.80	2.16%	21743.65	18.46%	1.36%	-
ADANIENT	2213.90	-31.30	-1.39%	9.35	209.37	2616.50	15.39%	1967.52	12.52%	-5.24%	-
ADANIPTS	1496.00	-1.20	-0.08%	16.77	253.05	1549.00	3.42%	1010.75	48.01%	3.38%	-
APOLLOHOSP	7028.50	-62.50	-0.88%	2.66	187.36	8099.50	13.22%	6001.00	17.12%	-7.21%	-
ASIANPAINT	2801.30	5.30	0.19%	8.45	237.14	2985.70	6.18%	2124.75	31.84%	6.97%	-
AXISBANK	1275.00	-0.90	-0.07%	29.29	373.99	1304.00	2.22%	933.50	36.58%	4.34%	-
BAJAJ-AUTO	8980.00	19.00	0.21%	3.07	275.27	9490.00	5.37%	7089.35	26.67%	2.75%	-
BAJAJFINSV	2060.00	-9.50	-0.46%	9.38	194.88	2195.00	6.15%	1551.65	32.76%	-1.55%	-
BAJFINANCE	1009.60	-7.10	-0.70%	49.91	505.35	1102.50	8.43%	679.20	48.65%	-4.68%	-
BEL	386.90	-2.55	-0.65%	83.68	325.03	436.00	11.26%	240.25	61.04%	-5.99%	-
BHARTIARTL	2063.00	-26.70	-1.28%	39.87	827.95	2174.50	5.13%	1559.50	32.29%	4.42%	-
CIPLA	1490.00	-0.60	-0.04%	13.16	196.57	1673.00	10.94%	1335.00	11.61%	-1.00%	-
COALINDIA	381.80	2.45	0.65%	47.52	181.33	420.95	9.30%	349.25	9.32%	0.89%	-
DRREDDY	1247.10	0.90	0.07%	16.70	209.13	1405.90	11.30%	1020.00	22.26%	3.38%	-
EICHERMOT	7233.00	110.00	1.54%	6.26	453.31	7294.00	0.84%	4646.00	55.68%	3.44%	-
ETERNAL	282.70	-9.00	-3.09%	206.40	590.71	368.45	23.27%	194.80	45.12%	-4.70%	-
GRASIM	2748.00	2.00	0.07%	3.44	94.99	2977.80	7.72%	2276.95	20.69%	0.79%	-
HCLTECH	1665.90	8.30	0.50%	14.82	246.70	2012.20	17.21%	1302.75	27.88%	9.60%	-
HDFCBANK	990.40	-6.70	-0.67%	153.22	1518.30	1020.50	2.95%	812.15	21.95%	1.51%	-
HDFCLIFE	771.00	8.10	1.06%	16.67	128.56	820.75	6.06%	584.30	31.95%	1.82%	-
HINDALCO	821.60	8.70	1.07%	52.81	435.44	864.00	4.91%	546.45	50.35%	2.85%	-
HINDUNILVR	2301.00	-5.50	-0.24%	28.57	657.75	2750.00	16.33%	2136.00	7.72%	-4.45%	-
ICICIBANK	1364.50	-10.70	-0.78%	87.25	1192.19	1500.00	9.03%	1186.00	15.05%	2.40%	-
INDIGO	4810.00	-157.50	-3.17%	71.28	3466.71	6232.50	22.82%	3945.00	21.93%	-11.03%	-
INFY	1584.80	-14.20	-0.89%	51.16	813.80	2006.45	21.01%	1307.00	21.25%	8.27%	-
ITC	403.05	2.00	0.50%	69.69	281.06	491.00	17.91%	390.15	3.31%	-0.74%	-
JIOFIN	290.70	-2.50	-0.85%	86.53	252.79	346.30	16.06%	198.65	46.34%	-2.04%	-
JSWSTEEL	1093.30	-14.50	-1.31%	12.23	134.76	1223.90	10.67%	880.00	24.24%	-5.45%	-
KOTAKBANK	2128.00	0.30	0.01%	21.88	467.61	2301.90	7.55%	1723.75	23.45%	1.89%	-
LT	3990.60	-6.90	-0.17%	9.57	383.33	4140.00	3.61%	2965.30	34.58%	2.96%	-
M&M	3633.40	-2.50	-0.07%	15.94	582.48	3795.00	4.26%	2425.00	49.83%	-1.47%	-
MARUTI	16000.00	-20.00	-0.12%	2.93	470.59	16660.00	3.96%	10725.00	49.18%	3.50%	-
MAXHEALTH	1080.50	5.80	0.54%	23.54	253.98	1314.30	17.79%	940.05	14.94%	-5.34%	-
NESTLEIND	1211.00	-4.80	-0.39%	5.15	62.32	1311.60	7.67%	1055.00	14.79%	-3.71%	-
NTPC	321.65	1.80	0.56%	54.84	176.52	373.30	13.84%	292.80	9.85%	-1.92%	-
ONGC	239.00	-0.84	-0.35%	34.92	83.54	273.50	12.61%	205.00	16.59%	-4.90%	-
POWERGRID	265.35	0.80	0.30%	71.57	190.18	336.25	21.09%	247.30	7.30%	-2.74%	-
RELIANCE	1533.50	4.10	0.27%	79.91	1230.42	1581.30	3.02%	1114.85	37.55%	3.48%	-
SBILIFE	2010.30	4.10	0.20%	5.98	120.54	2086.60	3.66%	1372.55	46.46%	0.37%	-
SBIN	958.00	-1.35	-0.14%	69.89	670.09	999.00	4.10%	680.00	40.88%	0.37%	-
SHRIRAMFIN	837.00	-9.70	-1.15%	36.99	311.95	872.00	4.01%	493.35	69.66%	3.72%	-
SUNPHARMA	1788.50	12.50	0.70%	23.22	413.41	1910.00	6.36%	1548.00	15.54%	5.00%	-
TATACONSUM	1140.40	-6.30	-0.55%	3.43	39.19	1202.80	5.19%	882.90	29.17%	-1.76%	-
TMPV	342.50	-2.20	-0.64%	87.04	299.52	820.35	58.25%	341.70	0.23%	-15.04%	-
TATASTEEL	162.00	1.33	0.83%	225.35	365.68	186.94	13.34%	122.62	32.12%	-11.41%	-
TCS	3185.00	-23.30	-0.73%	13.87	442.61	4494.90	29.14%	2866.60	11.11%	7.24%	-
TECHM	1548.20	-13.40	-0.86%	7.36	114.84	1807.70	14.36%	1209.40	28.01%	12.61%	-
TITAN	3830.40	-18.60	-0.48%	6.16	236.82	3956.00	3.17%	2925.00	30.95%	2.11%	-
TRENT	4013.00	-72.40	-1.77%	7.38	299.68	7493.05	46.44%	3988.00	0.63%	-11.71%	-
ULTRACEMCO	11315.00	-99.00	-0.87%	2.73	310.13	13097.00	13.61%	10047.85	12.61%	-3.67%	-
WIPRO	257.72	0.31	0.12%	79.43	205.39	324.60	20.60%	228.00	13.04%	8.85%	-

Disclaimer / Disclosures

ANALYST CERTIFICATION

I, Mrs. Vaishali Parekh B.com, Research Analyst, author and the name subscribed to this report, hereby certify that all of the views expressed in this research report accurately reflect our views about the subject issuer(s) or securities. We also certify that no part of our compensation was, is, or will be directly or indirectly related to the specific recommendation(s) or view(s) in this report.

Terms & conditions and other disclosures:

Prabhudas Lilladher Pvt. Ltd, Mumbai, India (hereinafter referred to as "PL") is engaged in the business of Stock Broking, Portfolio Manager, Depository Participant and distribution for third party financial products. PL is a subsidiary of Prabhudas Lilladher Advisory Services Pvt Ltd. which has its various subsidiaries engaged in business of commodity broking, investment banking, financial services (margin funding) and distribution of third party financial/other products, details in respect of which are available at www.plindia.com

This document has been prepared by the Research Division of PL and is meant for use by the recipient only as information and is not for circulation. This document is not to be reported or copied or made available to others without prior permission of PL. It should not be considered or taken as an offer to sell or a solicitation to buy or sell any security.

The information contained in this report has been obtained from sources that are considered to be reliable. However, PL has not independently verified the accuracy or completeness of the same. Neither PL nor any of its affiliates, its directors or its employees accepts any responsibility of whatsoever nature for the information, statements and opinion given, made available or expressed herein or for any omission therein.

Recipients of this report should be aware that past performance is not necessarily a guide to future performance and value of investments can go down as well. The suitability or otherwise of any investments will depend upon the recipient's particular circumstances and, in case of doubt, advice should be sought from an independent expert/advisor.

Either PL or its affiliates or its directors or its employees or its representatives or its clients or their relatives may have position(s), make market, act as principal or engage in transactions of securities of companies referred to in this report and they may have used the research material prior to publication.

PL may from time to time solicit or perform investment banking or other services for any company mentioned in this document.

PL is registered as Research Analyst under Securities and Exchange Board of India (Research Analysts) Regulations, 2014 PL submits that no material disciplinary action has been taken on us by any Regulatory Authority impacting Equity Research Analysis activities.

PL or its research analysts or its associates or his relatives do not have any financial interest in the subject company.

PL or its research analysts or its associates or his relatives do not have actual/beneficial ownership of one per cent or more securities of the subject company at the end of the month immediately preceding the date of publication of the research report.

PL or its research analysts or its associates or his relatives do not have any material conflict of interest at the time of publication of the research report.

PL or its associates might have received compensation from the subject company in the past twelve months.

PL or its associates might have managed or co-managed public offering of securities for the subject company in the past twelve months or mandated by the subject company for any other assignment in the past twelve months.

PL or its associates might have received any compensation for investment banking or merchant banking or brokerage services from the subject company in the past twelve months.

PL or its associates might have received any compensation for products or services other than investment banking or merchant banking or brokerage services from the subject company in the past twelve months PL or its associates might have received any compensation or other benefits from the subject company or third party in connection with the research report.

PL encourages independence in research report preparation and strives to minimize conflict in preparation of research report. PL or its analysts did not receive any compensation or other benefits from the subject Company or third party in connection with the preparation of the research report. PL or its Research Analysts do not have any material conflict of interest at the time of publication of this report.

It is confirmed that Mrs.Vaishali Parekh B.com, Research Analyst of this report has not received any compensation from the companies mentioned in the report in the preceding twelve months compensation of our Research Analysts is not based on any specific merchant banking, investment banking or brokerage service transactions.

The Research analysts for this report certifies that all of the views expressed in this report accurately reflect his or her personal views about the subject company or companies and its or their securities, and no part of his or her compensation was, is or will be, directly or indirectly related to specific recommendations or views expressed in this report.

The research analysts for this report has not served as an officer, director or employee of the subject company PL or its research analysts have not engaged in market making activity for the subject company

Our sales people, traders, and other professionals or affiliates may provide oral or written market commentary or trading strategies to our clients that reflect opinions that are contrary to the opinions expressed herein, and our proprietary trading and investing businesses may make investment decisions that are inconsistent with the recommendations expressed herein. In reviewing these materials, you should be aware that any or all of the foregoing, among other things, may give rise to real or potential conflicts of interest.

PL and its associates, their directors and employees may (a) from time to time, have a long or short position in, and buy or sell the securities of the subject company or (b) be engaged in any other transaction involving such securities and earn brokerage or other compensation or act as a market maker in the financial instruments of the subject company or act as an advisor or lender/borrower to the subject company or may have any other potential conflict of interests with respect to any recommendation and other related information and opinions.