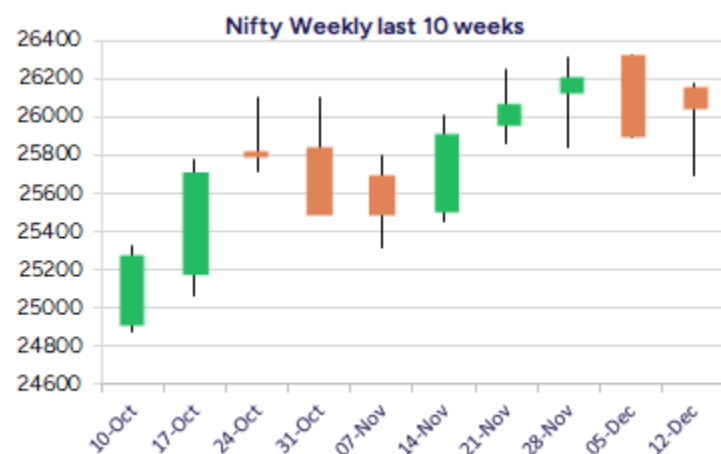
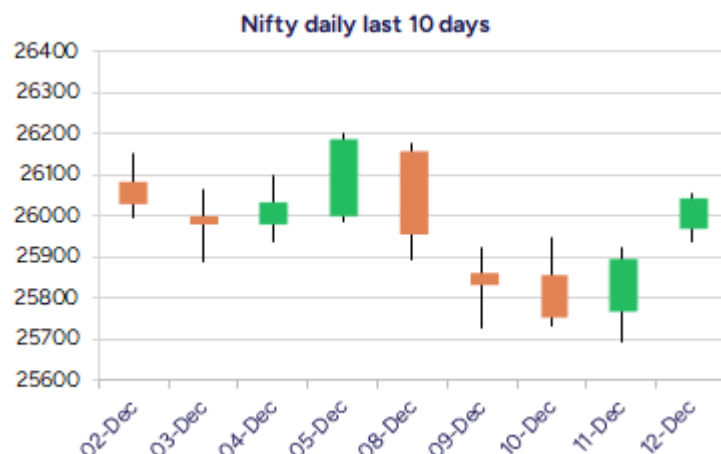


Date: 15th December 2025

* Sensex 85267.66 + 449.53

* Nifty 26046.95 + 148.40

* Bank Nifty 59389.95 + 180.10



*Blue candle → Close rate > Open rate * Red candle → Close rate < Open rate

Market Preview

Nifty ends above 26000 level; gains strength

Nifty opened on a positive note in the morning session and sustained above the 26000 zone to end on an optimistic approach to anticipate for further rise in the coming days. BankNifty gained in the openign session but thereafter remained lull to to end near the 59400 level with bias maintained positive overall. The market breadth was once again maintained strong with the advance decline indicating a ratio of 2:1 at close.

Market Forecast

Nifty daily range 25900 - 26300

Nifty witnessed a strong gap up opening to continue with the optimistic bias to move past the 26000 zone and remained almost rangebound sustaining the level for rest part of the session with bias and sentiment better placed with a positive approach maintained for the coming sessions. The index can carry on with the positive move to retest the peak zone of 26325 level once again in the coming days and can anticipate for a fresh breakout to trigger for further rise with the undertone getting stronger. The important 50EMA level at 25750 zone shall be positioned as the support level for the index as of now.

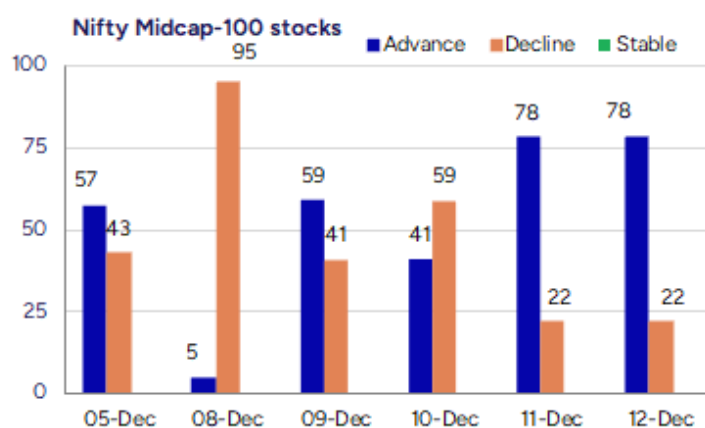
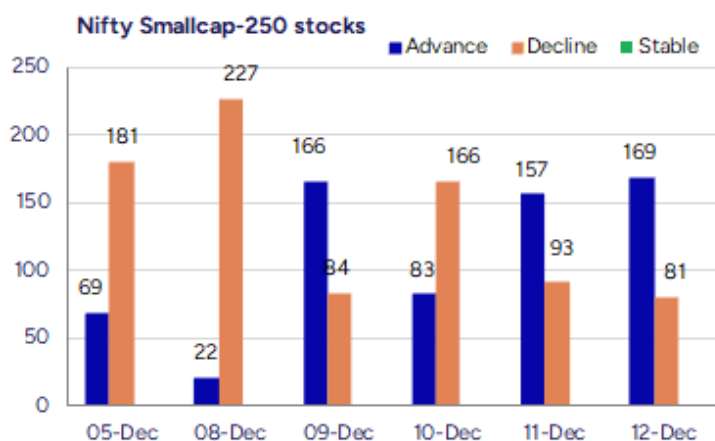
BankNifty also picked up with a gap up opening session but overall was underperforming as compared to the Nifty index with almost sluggish movement throughout the session hovering near the 59400 zone. As mentioned earlier, the index would need a decisive move past the 60000 zone to establish conviction and thereafter, expect for further upward move for targets of 61300 and 63000 levels in the coming days with 58800 level maintained as the important support level.

The support for the day is seen at 25900 levels, while the resistance is seen at 26300 levels. BankNifty would have the daily range of 59000-60000 levels.

Indices	Period	Closing	% Chng	Trend	Reversal	2 Sup	1 Sup	Pivot	1 Res	2 Res
Nifty	Daily	26046.95	0.57%	1	25971.15	25895	25971	26014	26090	26133
	Weekly	26046.95	-0.53%	-1	26074.20	25490	25769	25973	26251	26456
	Monthly	26202.95	1.87%	2	25767.20	24953	25578	25944	26569	26935
Bank Nifty	Daily	59389.95	0.30%	-9	59402.50	59066	59228	59387	59549	59708
	Weekly	59389.95	-0.65%	11	59343.40	58399	58894	59301	59797	60203
	Monthly	59752.70	3.42%	2	58620.10	56200	57976	58935	60712	61671
Sensex	Daily	85267.66	0.53%	1	85107.40	84818	85043	85182	85407	85546
	Weekly	85267.66	-0.52%	5	85208.75	83492	84380	85040	85928	86588
	Monthly	85706.67	2.11%	2	84235.40	81429	83568	84811	86950	88193

Gainers - Losers (Nifty 500 Stocks)

Gainers				Losers			
Company Name	Last Price	% Gain	Volume	Company Name	Last Price	% Loss	Volume
Anant Raj	550.45	9.02%	18530831	Balrampur Chini	438.60	-1.57%	297790
CCL Products	1,025.30	5.97%	479657	Ceat	3730.5	-1.08%	60335
Dalmia Bharat	2072.2	4.28%	550116	Alembic Pharma	876.90	-0.93%	49903
City Union Bank	273.35	4.27%	4295035	Bharti Hexacom	1,683.40	-0.85%	87608
BPCL	365.05	3.91%	6100115	Bombay Burmah	1,869.50	-0.75%	21741
Coromandel Int	2,326.60	3.46%	271508	Bank of Mah	57.03	-0.73%	7155346
BHEL	285.15	3.13%	12083274	Authum Invest	2610.8	-0.52%	94326



Nifty Daily chart with RSI indicator



BankNifty Daily chart with RSI indicator



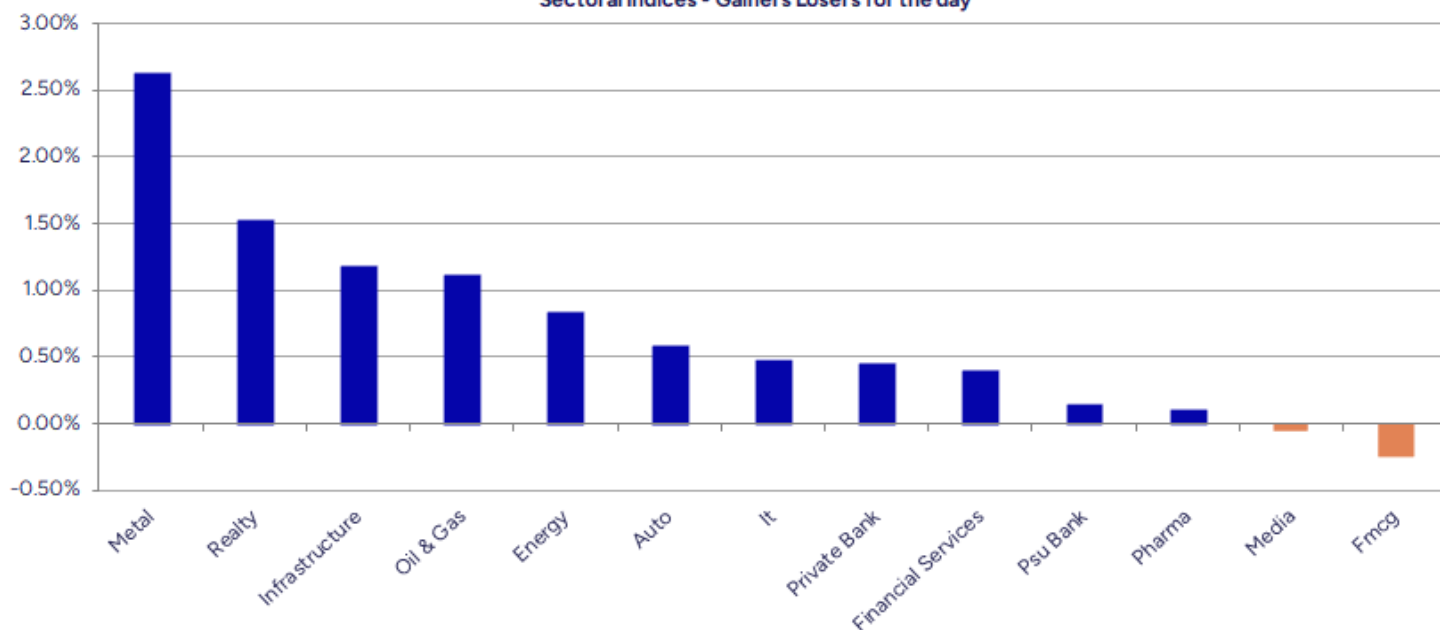
Breakouts - Cross above 200 DMA			
Company Name	LCP	Change %	200 DMA
Euro India Fres	229.7	4.64	219.52
Transwind Infra	21.25	4.63	20.31
Peria Karamalai	765	4.40	732.77
Inventurus Know	1646	4.06	1581.76
Bharat Rasayan	2657	3.86	2558.27
Brace Port Logi	87.2	3.75	84.05
Indraprastha	472.9	3.70	456.01
Greenlam Ind	251.95	3.56	243.28
Motilal Oswal	864.55	3.20	837.71
Share India	173.38	3.05	168.25
KIOCL	344.7	2.48	336.35
JM Financial	146.46	2.43	142.98
Nagreeka Cap	28.49	2.26	27.86
Sarda Energy	511.4	2.09	500.91
Himadri Special	469.25	2.04	459.86
Spandana Sphoor	271	2.00	265.68
TVS Electronics	453.2	1.99	444.37
PNB Housing Fin	947	1.81	930.18

* Stocks crossing above its Simple Moving Average (200DMA)

Breakdown - Cross below 200 DMA			
Company Name	LCP	Change %	200 DMA
Purv Flexipack	90.25	-2.42	92.49
Chavda Infra	119.6	-1.90	121.92
Sai Silks	151.76	-1.30	153.76
Sharda Motor	950.2	-1.05	960.32
HF	534.95	-0.94	540.03
RBM Infracon	418.25	-0.85	421.83
Moksh Ornaments	14.07	-0.42	14.13
Bliss GVS	144.57	-0.40	145.15
Rama Steel Tube	10.61	-0.38	10.65
Schaeffler Ind	3831.3	-0.38	3846.09
Eris Life	1572.2	-0.36	1577.88
AVT Natural	66.81	-0.25	66.98
Magson Retail	114.65	-0.23	114.92
Popular Vehicle	123.89	-0.07	123.98
Pfizer	4972	-0.03	4973.53

* Stocks crossing below its Simple Moving Average (200DMA)

Sectoral Indices - Gainers Losers for the day



Stocks witnessing a volume surge as compared to their 5 day average volume

Watch out for the stocks that have seen a huge spurt in its share price over the last three days

Volume Shockers - NSE					
Company name	LCP	% Chg	Volume	Avg Vol *	% Chg
Dynacons Sys	981.4	13.76	956874	1960	48715
HDFC Life	779.4	0.54	8277698	70623	11621
JNK India	233.8	1.81	137466	1670	8131
Shankara Buildi	113.35	1.02	105332	1794	5773
Nazara	225	-1.81	1050909	19281	5350
Phoenix Intl	40.75	4.51	99995	2123	4611
Oil India	404	-0.17	3865450	100146	3760
Refex Ind	254.35	-19.99	798393	21104	3683
KPR Mill	977.8	0.34	245599	6840	3490
Walchandnagar	173	13.44	484791	14463	3252
Omax Autos	98.77	5.77	65258	1998	3166
A-1	1864.05	5	155910	4904	3079
Kaynes Tech	4259	5.32	759153	26893	2723
Cupid Breweries	51.52	-5	272776	9674	2720
ICICI Prudentia	648.8	2.07	1278261	61601	1975
AU Small Financ	966.65	-0.67	1319798	66022	1899
Take Solutions	35	1.74	541509	28955	1770
Bhagiradh Chem	225.55	-1.18	553889	29699	1765
Havells India	1410	0.46	211720	11710	1708
Trustedge Capit	92.02	5.87	55486	3372	1546
Embassy Office	440.2	0.1	485525	29803	1529

Price Shockers - NSE				
Company name	LCP	Prv Close	% Chg	Volume
Ecoboard Inds	49	39.29	24.71	33340
Sheetal Cool Pr	280	225.2	24.33	53628
Maha Rasht Apex	95.16	76.61	24.21	3494
Samor Reality	65.44	53.23	22.94	7430
Kreon Fin Serv	35.5	29.1	21.99	10799
Shristi Infra	36.85	30.5	20.82	6238
AG VENTURES	131	108.95	20.24	8974
Rajshree Sugars	37.9	31.82	19.11	10055
Alacrity Sec	56.59	47.71	18.61	137951
Lokesh Machines	175.15	147.75	18.54	25130
RS Software	57.5	49.6	15.93	43792
Fermenta Bio	341.95	295.3	15.8	197055
Transchem	155.83	134.62	15.76	12739
Coromandel Engg	68.75	59.4	15.74	14604
Concord Drugs	85.08	73.51	15.74	12163
Prozone Realty	54.42	47.02	15.74	21447
Shukra Pharma	51.19	44.23	15.74	754847
Shri Rama Multi	54.29	46.91	15.73	21351
Shlokka Dyes	37.44	32.36	15.7	9600
GK Energy	158.65	137.7	15.21	176049
Calcom Vision	126.05	109.45	15.17	20750

Nifty 50 stocks - Summary Details											
Symbol	LTP	Chng	% Chng	Volume (lacs)	Turnover (crs.)	52w High	Diff with 52w H	52w Low	Diff with 52w L	30 days % chng	365 days % chng
NIFTY 50	26046.95	148.40	0.57%	2163.30	19482.85	26325.80	1.06%	21743.65	19.79%	1.27%	-
ADANIENT	2284.00	6.30	0.28%	9.29	212.09	2616.50	12.71%	1967.52	16.09%	-3.92%	-
ADANIPTS	1521.00	17.00	1.13%	11.53	175.13	1549.00	1.81%	1010.75	50.48%	4.09%	-
APOLLOHOSP	7078.00	68.50	0.98%	3.07	217.29	8099.50	12.61%	6001.00	17.95%	-6.91%	-
ASIANPAINT	2765.00	-14.40	-0.52%	9.78	270.65	2985.70	7.39%	2124.75	30.13%	4.87%	-
AXISBANK	1285.00	12.30	0.97%	22.81	293.52	1304.00	1.46%	933.50	37.65%	4.58%	-
BAJAJ-AUTO	9015.50	-38.00	-0.42%	3.56	321.31	9490.00	5.00%	7089.35	27.17%	3.21%	-
BAJAJFINSV	2084.30	18.50	0.90%	5.55	115.45	2195.00	5.04%	1551.65	34.33%	-2.48%	-
BAJFINANCE	1015.80	9.40	0.93%	43.82	445.53	1102.50	7.86%	679.20	49.56%	-7.24%	-
BEL	389.15	1.65	0.43%	126.61	494.90	436.00	10.75%	240.25	61.98%	-7.04%	-
BHARTIARTL	2082.10	28.90	1.41%	27.06	561.37	2174.50	4.25%	1559.50	33.51%	1.65%	-
CIPLA	1516.10	3.80	0.25%	10.54	160.04	1673.00	9.38%	1335.00	13.57%	0.05%	-
COALINDIA	383.00	-1.00	-0.26%	14.10	54.13	419.65	8.73%	349.25	9.66%	0.69%	-
DRREDDY	1280.00	6.50	0.51%	9.81	125.29	1405.90	8.96%	1020.00	25.49%	6.24%	-
EICHERMOT	7230.00	-26.00	-0.36%	3.25	235.07	7328.50	1.34%	4646.00	55.62%	5.67%	-
ETERNAL	297.85	6.90	2.37%	272.89	806.47	368.45	19.16%	194.80	52.90%	-3.48%	-
GRASIM	2830.00	32.20	1.15%	9.28	262.25	2977.80	4.96%	2276.95	24.29%	1.26%	-
HCLTECH	1670.00	-2.40	-0.14%	12.84	214.44	2012.20	17.01%	1302.75	28.19%	8.56%	-
HDFCBANK	1002.90	2.60	0.26%	119.89	1200.67	1020.50	1.72%	812.15	23.49%	1.60%	-
HDFCLIFE	778.95	3.75	0.48%	12.91	100.07	820.75	5.09%	584.30	33.31%	3.26%	-
HINDALCO	851.20	26.85	3.26%	81.78	691.16	864.00	1.48%	546.45	55.77%	4.99%	-
HINDUNILVR	2264.00	-41.60	-1.80%	32.03	724.74	2750.00	17.67%	2136.00	5.99%	-4.28%	-
ICICIBANK	1366.00	6.00	0.44%	38.90	531.61	1500.00	8.93%	1186.00	15.18%	0.89%	-
INDIGO	4862.00	43.00	0.89%	33.79	1642.24	6232.50	21.99%	3945.00	23.24%	-13.77%	-
INFY	1597.50	-0.50	-0.03%	46.32	738.35	2006.45	20.38%	1307.00	22.23%	5.58%	-
ITC	400.70	-2.20	-0.55%	124.07	496.96	491.00	18.39%	390.15	2.70%	-0.65%	-
JIOFIN	300.70	2.25	0.75%	79.55	239.18	346.30	13.17%	198.65	51.37%	-1.16%	-
JSWSTEEL	1123.50	18.10	1.64%	8.27	92.84	1223.90	8.20%	880.00	27.67%	-6.27%	-
KOTAKBANK	2177.30	-2.90	-0.13%	28.63	625.29	2301.90	5.41%	1723.75	26.31%	4.18%	-
LT	4072.80	68.90	1.72%	22.08	900.66	4140.00	1.62%	2965.30	37.35%	2.18%	-
M&M	3679.10	13.90	0.38%	10.79	397.00	3795.00	3.05%	2425.00	51.72%	0.04%	-
MARUTI	16515.00	267.00	1.64%	4.05	666.97	16660.00	0.87%	10725.00	53.99%	4.27%	-
MAXHEALTH	1080.00	-7.90	-0.73%	22.46	242.86	1314.30	17.83%	940.05	14.89%	-0.92%	-
NESTLEIND	1234.40	19.40	1.60%	8.42	103.70	1311.60	5.89%	1055.00	17.00%	-3.79%	-
NTPC	325.00	2.40	0.74%	42.61	138.35	371.45	12.51%	292.80	11.00%	-0.88%	-
ONGC	238.10	-0.31	-0.13%	42.52	101.11	273.50	12.94%	205.00	16.15%	-5.17%	-
POWERGRID	263.60	-1.20	-0.45%	55.22	145.92	336.25	21.61%	247.30	6.59%	-1.27%	-
RELIANCE	1554.30	9.30	0.60%	51.06	794.10	1581.30	1.71%	1114.85	39.42%	3.74%	-
SBILIFE	2030.00	23.10	1.15%	5.57	112.55	2086.60	2.71%	1372.55	47.90%	0.88%	-
SBIN	962.60	-0.65	-0.07%	56.82	546.33	999.00	3.64%	680.00	41.56%	1.27%	-
SHRIRAMFIN	849.00	1.85	0.22%	60.37	512.17	872.00	2.64%	493.35	72.09%	3.17%	-
SUNPHARMA	1794.20	-13.00	-0.72%	14.42	259.38	1910.00	6.06%	1548.00	15.90%	6.44%	-
TATACONSUM	1149.50	7.40	0.65%	7.52	86.08	1202.80	4.43%	882.90	30.20%	-0.05%	-
TMPV	347.20	0.55	0.16%	72.39	251.22	810.00	57.14%	341.40	1.70%	-15.54%	-
TATASTEEL	172.00	5.62	3.38%	411.29	702.03	186.94	7.99%	122.62	40.27%	-8.32%	-
TCS	3220.10	28.20	0.88%	11.46	367.90	4494.90	28.36%	2866.60	12.33%	5.51%	-
TECHM	1580.10	11.90	0.76%	7.54	118.76	1807.70	12.59%	1209.40	30.65%	12.19%	-
TITAN	3871.00	26.20	0.68%	5.48	212.31	3956.00	2.15%	2925.00	32.34%	1.10%	-
TRENT	4067.00	19.50	0.48%	5.35	217.63	7493.05	45.72%	3930.10	3.48%	-5.51%	-
ULTRACEMCO	11730.00	258.00	2.25%	3.89	453.78	13097.00	10.44%	10047.85	16.74%	-2.18%	-
WIPRO	260.50	1.25	0.48%	40.08	104.03	324.60	19.75%	228.00	14.25%	8.09%	-

Disclaimer / Disclosures

ANALYST CERTIFICATION

I, Mrs. Vaishali Parekh B.com, Research Analyst, author and the name subscribed to this report, hereby certify that all of the views expressed in this research report accurately reflect our views about the subject issuer(s) or securities. We also certify that no part of our compensation was, is, or will be directly or indirectly related to the specific recommendation(s) or view(s) in this report.

Terms & conditions and other disclosures:

Prabhudas Lilladher Pvt. Ltd, Mumbai, India (hereinafter referred to as "PL") is engaged in the business of Stock Broking, Portfolio Manager, Depository Participant and distribution for third party financial products. PL is a subsidiary of Prabhudas Lilladher Advisory Services Pvt Ltd. which has its various subsidiaries engaged in business of commodity broking, investment banking, financial services (margin funding) and distribution of third party financial/other products, details in respect of which are available at www.plindia.com

This document has been prepared by the Research Division of PL and is meant for use by the recipient only as information and is not for circulation. This document is not to be reported or copied or made available to others without prior permission of PL. It should not be considered or taken as an offer to sell or a solicitation to buy or sell any security.

The information contained in this report has been obtained from sources that are considered to be reliable. However, PL has not independently verified the accuracy or completeness of the same. Neither PL nor any of its affiliates, its directors or its employees accepts any responsibility of whatsoever nature for the information, statements and opinion given, made available or expressed herein or for any omission therein.

Recipients of this report should be aware that past performance is not necessarily a guide to future performance and value of investments can go down as well. The suitability or otherwise of any investments will depend upon the recipient's particular circumstances and, in case of doubt, advice should be sought from an independent expert/advisor.

Either PL or its affiliates or its directors or its employees or its representatives or its clients or their relatives may have position(s), make market, act as principal or engage in transactions of securities of companies referred to in this report and they may have used the research material prior to publication.

PL may from time to time solicit or perform investment banking or other services for any company mentioned in this document.

PL is registered as Research Analyst under Securities and Exchange Board of India (Research Analysts) Regulations, 2014 PL submits that no material disciplinary action has been taken on us by any Regulatory Authority impacting Equity Research Analysis activities.

PL or its research analysts or its associates or his relatives do not have any financial interest in the subject company.

PL or its research analysts or its associates or his relatives do not have actual/beneficial ownership of one per cent or more securities of the subject company at the end of the month immediately preceding the date of publication of the research report.

PL or its research analysts or its associates or his relatives do not have any material conflict of interest at the time of publication of the research report.

PL or its associates might have received compensation from the subject company in the past twelve months.

PL or its associates might have managed or co-managed public offering of securities for the subject company in the past twelve months or mandated by the subject company for any other assignment in the past twelve months.

PL or its associates might have received any compensation for investment banking or merchant banking or brokerage services from the subject company in the past twelve months.

PL or its associates might have received any compensation for products or services other than investment banking or merchant banking or brokerage services from the subject company in the past twelve months PL or its associates might have received any compensation or other benefits from the subject company or third party in connection with the research report.

PL encourages independence in research report preparation and strives to minimize conflict in preparation of research report. PL or its analysts did not receive any compensation or other benefits from the subject Company or third party in connection with the preparation of the research report. PL or its Research Analysts do not have any material conflict of interest at the time of publication of this report.

It is confirmed that Mrs.Vaishali Parekh B.com, Research Analyst of this report has not received any compensation from the companies mentioned in the report in the preceding twelve months compensation of our Research Analysts is not based on any specific merchant banking, investment banking or brokerage service transactions.

The Research analysts for this report certifies that all of the views expressed in this report accurately reflect his or her personal views about the subject company or companies and its or their securities, and no part of his or her compensation was, is or will be, directly or indirectly related to specific recommendations or views expressed in this report.

The research analysts for this report has not served as an officer, director or employee of the subject company PL or its research analysts have not engaged in market making activity for the subject company

Our sales people, traders, and other professionals or affiliates may provide oral or written market commentary or trading strategies to our clients that reflect opinions that are contrary to the opinions expressed herein, and our proprietary trading and investing businesses may make investment decisions that are inconsistent with the recommendations expressed herein. In reviewing these materials, you should be aware that any or all of the foregoing, among other things, may give rise to real or potential conflicts of interest.

PL and its associates, their directors and employees may (a) from time to time, have a long or short position in, and buy or sell the securities of the subject company or (b) be engaged in any other transaction involving such securities and earn brokerage or other compensation or act as a market maker in the financial instruments of the subject company or act as an advisor or lender/borrower to the subject company or may have any other potential conflict of interests with respect to any recommendation and other related information and opinions.