

Date: 16th December 2025

* Sensex 85213.36 - 54.30

* Nifty 26027.30 - 19.65

* Bank Nifty 59461.80 + 71.85

Market Preview

Nifty recovers to end above 26000 zone

Nifty after a weak opening session recovered significantly to close above the 26000 zone with the broader markets also indicating a decent bounce back to maintain an optimistic view. BankNifty picked up from the low made in the opening session and closed near the 59500 zone with rangebound movement visible for quite some sessions. The market breadth was slightly on the positive side with the advance decline indicating a ratio of 6:5 at close.

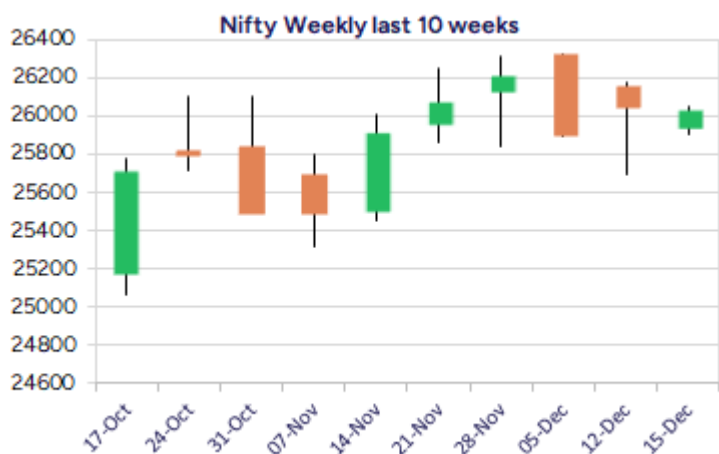
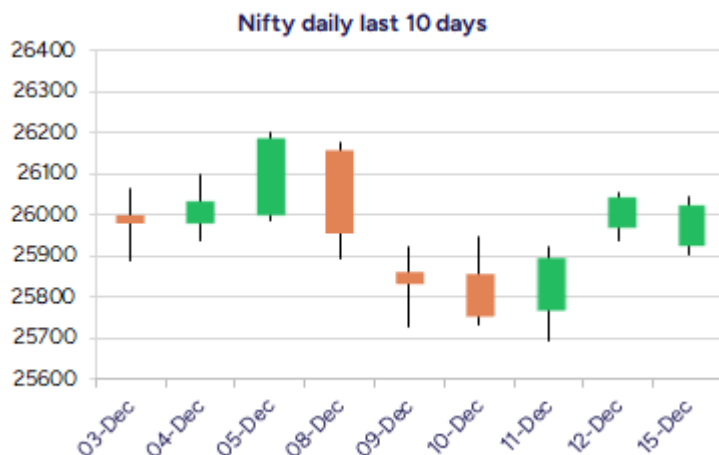
Market Forecast

Nifty daily range 25900 - 26200

Nifty opened on a weak note with a gap down but witnessed a significant and steady recovery from the low made near 25900 zone to improve the sentiment and maintained the bias overall intact with an optimistic approach sustained. The index can carry on with the positive move to retest the previous peak zone of 26325 level once again in the coming days with the important 50EMA level at 25750 zone positioned as the important support level for the index which needs to be sustained.

BankNifty after opening near the low at 59000 zone in the morning session, the index once again pullback to end the session near 59500 zone overall gripped between a narrow range as we have been witnessing since the last 2 weeks. The index would need a decisive move past the resistance barrier of the range at 59700 level to establish conviction and thereafter, expect for further upward move for targets of 61300 and 63000 levels in the coming days, as mentioned earlier, having 58800 level maintained as the important support level.

The support for the day is seen at 25900 levels, while the resistance is seen at 26200 levels. BankNifty would have the daily range of 59000-60000 levels.

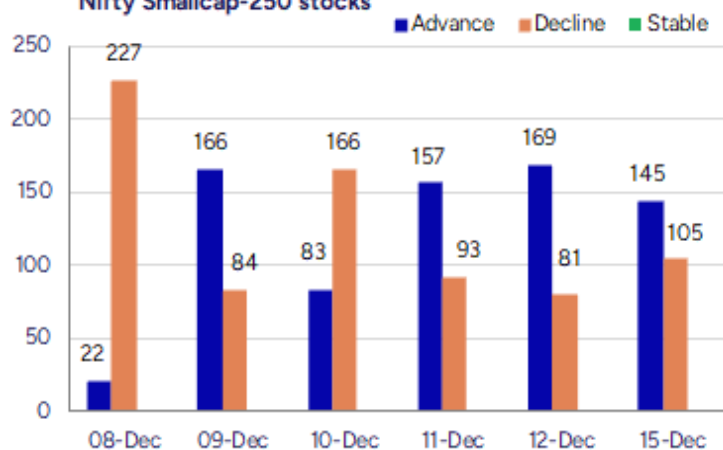
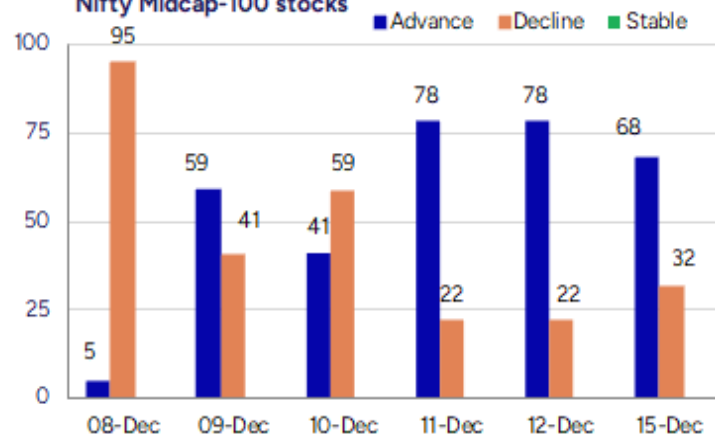


*Blue candle → Close rate > Open rate * Red candle → Close rate < Open rate

Indices	Period	Closing	% Chng	Trend	Reversal	2 Sup	1 Sup	Pivot	1 Res	2 Res
Nifty	Daily	26027.30	-0.08%	2	25969.00	25851	25939	25993	26081	26135
	Weekly	26046.95	-0.53%	-1	26074.20	25490	25769	25973	26251	26456
	Monthly	26202.95	1.87%	2	25767.20	24953	25578	25944	26569	26935
Bank Nifty	Daily	59461.80	0.12%	1	59402.60	58868	59165	59349	59646	59830
	Weekly	59389.95	-0.65%	11	59343.40	58399	58894	59301	59797	60203
	Monthly	59752.70	3.42%	2	58620.10	56200	57976	58935	60712	61671
Sensex	Daily	85213.36	-0.06%	2	85080.55	84672	84943	85111	85381	85549
	Weekly	85267.66	-0.52%	5	85208.75	83492	84380	85040	85928	86588
	Monthly	85706.67	2.11%	2	84235.40	81429	83568	84811	86950	88193

Gainers - Losers (Nifty 500 Stocks)

Gainers				Losers			
Company Name	Last Price	% Gain	Volume	Company Name	Last Price	% Loss	Volume
Action Const	995.9	6.66%	1513458	CCL Products	989.10	-3.53%	470543
Aarti Ind	376.30	5.42%	10282254	BSE Limited	2648.9	-3.15%	3950024
AIA Engineering	3893.8	3.84%	86934	AB Capital	351.80	-3.07%	4422474
BEML	1,740.40	2.96%	450326	Aditya Birla F	75.43	-2.88%	2586281
Aditya Birla Re	1,721.50	2.84%	142619	Chola Fin Hold	1,899.10	-1.94%	114770
Amber Enterpris	6,801.50	2.65%	671230	Brainbees Solu	285.7	-1.67%	199256
Alivus Life	910.80	2.49%	80115	Cera Sanitary	5179.5	-1.50%	34310

Nifty Smallcap-250 stocks

Nifty Midcap-100 stocks


Nifty Daily chart with RSI indicator



BankNifty Daily chart with RSI indicator

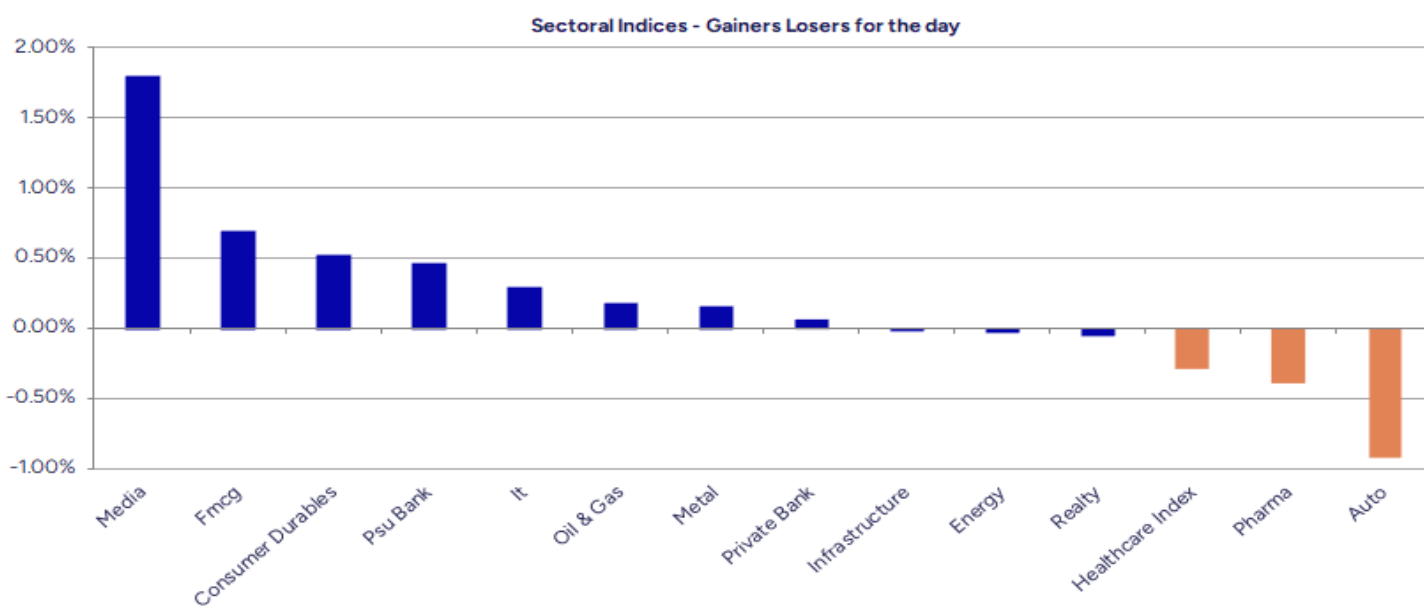


Breakouts - Cross above 200 DMA			
Company Name	LCP	Change %	200 DMA
Orbit Exports	197.71	4.93	188.42
Maha Rasht Apex	111	4.58	106.14
Madhav Copper	52.51	3.84	50.57
Expleo Solution	1066	3.50	1029.99
Kajaria Ceramic	1100.7	2.97	1068.99
Cineline India	91	2.40	88.87
Coffee Day	36.36	2.13	35.6
Ruby Mills	224.01	2.04	219.53
SAR Televenture	226	2.00	221.57
EPL	220.95	1.99	216.64
Gandhi Spl Tube	773	1.56	761.15
Sanghvi Movers	311.65	1.38	307.42
Par Drugs	101.64	1.28	100.36
Z-Tech India	578	1.27	570.75
Agri-Tech	145	1.22	143.25
Dalmia Bharat	2103.7	1.02	2082.52
Astral Ltd	1430.9	0.96	1417.35
Ugar Sugar Work	45.35	0.96	44.92

* Stocks crossing above its Simple Moving Average (200DMA)

Breakdown - Cross below 200 DMA			
Company Name	LCP	Change %	200 DMA
Abha Power	34.2	-4.50	35.81
ALUWIND INFRA	71.55	-2.86	73.66
Raymond Lifesty	1101	-2.46	1128.81
GP Eco Solution	432.05	-2.21	441.8
Ginni Filaments	37.9	-2.04	38.69
Metro	1134.3	-2.02	1157.69
Bharat Rasayan	2508	-2.00	2559.24
Signet Ind	54.54	-1.69	55.48
Aarey Drugs	64.44	-1.12	65.17
Medicamen Bio	398.4	-1.01	402.46
PNB Housing Fin	923.95	-0.74	930.81
Sanstar	91.45	-0.54	91.95
United Drilling	207.93	-0.52	209.02
The Hi-Tech Gea	679	-0.51	682.45
Mahalaxmi Rub	220.05	-0.48	221.11
Raj Oil Mills	49.35	-0.40	49.55
Cipla	1507	-0.37	1512.65
ANDHRSUGAR	76.17	-0.33	76.42

* Stocks crossing below its Simple Moving Average (200DMA)



Stocks witnessing a volume surge as compared to their 5 day average volume

Watch out for the stocks that have seen a huge spurt in its share price over the last three days

Volume Shockers - NSE						Price Shockers - NSE				
Company name	LCP	% Chg	Volume	Avg Vol *	% Chg	Company name	LCP	Prv Close	% Chg	Volume
Geojit BNP	75.54	7.9	5124173	12012	42560	Maha Rasht Apex	113.52	74.02	53.36	42282
Centum Electron	2264.35	-1.5	131633	1564	8315	Samor Reality	77	52.04	47.96	7894
CL Educate	82.2	-0.25	101742	1506	6658	Mansi Financ	105	76	38.16	70955
Digjam	53.62	4.95	79438	1665	4670	Shakti Pumps	751.3	550.95	36.36	3395483
Praj Industries	335	10.29	1691155	36051	4591	Transformers	306.6	240.65	27.4	3623838
OXYGENTA PHARM	56.25	-6.48	221525	4796	4519	Bemco Hydraulic	113.85	89.43	27.31	24909
Mansi Financ	105	17.49	70955	1828	3782	Tainwala Chem	190.35	159.3	19.49	3701
Reflex Ind	299.75	17.85	4129377	176496	2240	InfoBeans Tech	752	630.7	19.23	19064
Vaswani Ind	61.76	5.83	96630	4641	1982	Shri Rama Multi	58.21	49.25	18.19	304890
Kaynes Tech	4199	-1.59	540239	26893	1909	Rico Auto	119.3	101	18.12	571333
Supreme Ind	3283.65	1.85	413086	25230	1537	Fermenta Bio	351.15	300.55	16.84	93515
Gulf Oil Corp	312.2	3.21	47171	3138	1403	DCW	61.35	52.79	16.22	128771
KEC Intl	705.25	1.97	315838	21527	1367	Lotus Eye Care	131	112.8	16.13	12632
Shri Rama Multi	58.21	7.22	304890	21237	1336	Transchem	163.62	141.35	15.76	9423
GlaxoSmithKline	2575	-0.89	89044	6377	1296	Rapicut Carbide	137.24	118.57	15.75	7340
Super Iron	36.2	-2.69	79200	6240	1169	Soma Papers	101.18	87.42	15.74	5534
Bacil Pharma	38.97	-0.66	31508	2543	1139	Coromandel Engg	72.18	62.37	15.73	4060
Kings Infra	108.55	-19.98	302282	24698	1124	MIZZEN VENTURES	132.45	114.45	15.73	5111
Lloyds Metals	1288	-0.05	224179	19379	1057	Shlokka Dyes	39.31	33.97	15.72	8400
Trident Texofab	243	1.02	366075	32548	1025	Digjam	53.62	46.35	15.69	79438
Laxmi Organic	172.8	1.17	288701	26375	995	Shukra Pharma	53.71	46.44	15.65	549751

Nifty 50 Stocks - Summary Details											
Symbol	LTP	Chng	% Chng	Volume (lacs)	Turnover (crs.)	52w High	Diff with 52w H	52w Low	Diff with 52w L	365 days % chng	30 days % chng
NIFTY 50	26027.30	-19.65	-0.08%	1815.58	17444	26326	1.13%	21744	19.70%	0.45%	5.08%
ADANIENT	2280.00	-2.40	-0.11%	5.73	131	2617	12.86%	1968	15.88%	-9.45%	-9.84%
ADANIPTS	1510.00	-12.80	-0.84%	8.50	129	1549	2.52%	1011	49.39%	-0.01%	20.05%
APOLLOHOSP	7097.00	-4.00	-0.06%	2.06	145	8100	12.38%	6001	18.26%	-4.50%	-2.38%
ASIANPAINT	2777.80	13.00	0.47%	10.30	287	2986	6.96%	2125	30.74%	-4.34%	15.47%
AXISBANK	1284.40	-1.70	-0.13%	16.34	210	1304	1.50%	934	37.59%	3.48%	11.90%
BAJAJ-AUTO	8921.00	-94.00	-1.04%	5.08	453	9490	6.00%	7089	25.84%	1.10%	-0.90%
BAJAJFINSV	2067.10	-16.00	-0.77%	4.83	100	2195	5.83%	1552	33.22%	0.23%	23.27%
BAJFINANCE	1012.10	-5.20	-0.51%	39.59	401	1103	8.20%	679	49.01%	-0.57%	-85.90%
BEL	390.75	1.30	0.33%	90.88	355	436	10.38%	240	62.64%	-8.46%	23.79%
BHARTIARTL	2072.00	-11.40	-0.55%	32.34	670	2175	4.71%	1560	32.86%	-1.48%	23.07%
CIPLA	1504.50	-12.90	-0.85%	8.56	129	1673	10.07%	1335	12.70%	-1.57%	4.19%
COALINDIA	384.50	1.15	0.30%	18.70	72	418	7.98%	349	10.09%	-0.65%	-6.30%
DRREDDY	1277.60	-1.70	-0.13%	10.79	138	1406	9.13%	1020	25.25%	2.78%	2.75%
EICHERMOT	7116.00	-113.00	-1.56%	3.92	279	7329	2.90%	4646	53.16%	6.37%	47.57%
ETERNAL	298.05	0.00	0.01%	147.56	439	368	19.11%	195	53.00%	-1.74%	#VALUE!
GRASIM	2834.10	-2.60	-0.09%	7.36	208	2978	4.83%	2277	24.47%	1.35%	4.76%
HCLTECH	1686.40	13.20	0.79%	16.90	284	2012	16.19%	1303	29.45%	5.61%	-14.47%
HDFCBANK	995.00	-6.50	-0.65%	97.90	975	1021	2.50%	812	22.51%	0.66%	-46.78%
HDFCLIFE	772.05	-5.45	-0.70%	15.11	116	821	5.93%	584	32.13%	-0.13%	22.16%
HINDALCO	846.90	-5.20	-0.61%	25.22	214	864	1.98%	546	54.98%	5.50%	28.05%
HINDUNILVR	2288.00	27.40	1.21%	12.74	291	2750	16.80%	2136	7.12%	-5.53%	-4.04%
ICICIBANK	1365.00	-1.00	-0.07%	53.43	729	1500	9.00%	1186	15.09%	-0.57%	1.51%
INDIGO	4960.00	99.50	2.05%	40.15	1992	6233	20.42%	3945	25.73%	-15.96%	12.01%
INFY	1607.00	8.80	0.55%	41.91	672	2006	19.91%	1307	22.95%	6.92%	-19.65%
ITC	402.00	1.90	0.47%	77.57	312	491	18.13%	390	3.04%	-1.43%	-14.40%
JIOFIN	299.65	-1.10	-0.37%	48.50	145	346	13.47%	199	50.84%	-4.86%	-11.82%
JSWSTEEL	1114.00	-11.50	-1.02%	10.18	114	1224	8.98%	880	26.59%	-4.54%	11.50%
KOTAKBANK	2182.70	6.10	0.28%	27.56	599	2302	5.18%	1724	26.63%	4.89%	20.80%
LT	4090.00	15.90	0.39%	10.65	435	4140	1.21%	2965	37.93%	2.20%	5.28%
M&M	3609.70	-69.90	-1.90%	17.04	617	3795	4.88%	2425	48.85%	-2.45%	17.09%
MARUTI	16400.00	-122.00	-0.74%	2.25	370	16660	1.56%	10725	52.91%	4.66%	45.62%
MAXHEALTH	1083.50	2.20	0.20%	16.32	176	1314	17.56%	940	15.26%	-1.60%	-8.02%
NESTLEIND	1240.10	1.80	0.15%	8.58	106	1312	5.45%	1055	17.55%	-2.21%	-44.82%
NTPC	323.50	-1.55	-0.48%	102.20	331	371	12.91%	293	10.48%	-1.37%	-9.30%
ONGC	235.20	-2.82	-1.18%	123.34	287	274	14.00%	205	14.73%	-4.95%	-7.43%
POWERGRID	262.15	-1.45	-0.55%	64.00	168	336	22.04%	247	6.00%	-3.35%	-21.46%
RELIANCE	1557.00	0.50	0.03%	57.75	897	1581	1.54%	1115	39.66%	2.46%	22.26%
SBILIFE	2034.10	8.20	0.40%	5.66	115	2087	2.52%	1373	48.20%	1.70%	42.42%
SBIN	966.10	2.95	0.31%	44.17	426	999	3.29%	680	42.07%	-0.06%	12.27%
SHRIRAMFIN	851.05	3.05	0.36%	71.94	618	872	2.40%	493	72.50%	5.69%	-72.95%
SUNPHARMA	1797.10	3.60	0.20%	13.97	250	1910	5.91%	1548	16.09%	2.28%	-0.90%
TATACONSUM	1155.00	5.70	0.50%	10.37	120	1203	3.97%	883	30.82%	-0.03%	24.49%
TATASTEEL	172.70	0.81	0.47%	232.54	401	187	7.62%	123	40.84%	-0.80%	16.06%
TCS	3227.00	6.50	0.20%	15.62	503	4495	28.21%	2867	12.57%	4.00%	-27.80%
TECHM	1575.50	-2.90	-0.18%	7.85	124	1808	12.85%	1209	30.27%	9.46%	-12.30%
TITAN	3855.00	-25.20	-0.65%	3.32	128	3956	2.55%	2925	31.79%	0.97%	10.18%
TMPV	346.45	-1.00	-0.29%	81.69	283	810	57.23%	341	1.48%	-11.26%	#VALUE!
TRENT	4125.00	49.60	1.22%	4.60	187	7493	44.95%	3930	4.96%	-6.43%	-41.30%
ULTRACEMCO	11711.00	-12.00	-0.10%	1.78	209	13097	10.58%	10048	16.55%	-1.23%	-2.95%
WIPRO	262.50	1.90	0.73%	40.24	105	325	19.13%	228	15.13%	7.11%	-15.55%

Disclaimer / Disclosures

ANALYST CERTIFICATION

I, Mrs. Vaishali Parekh B.com, Research Analyst, author and the name subscribed to this report, hereby certify that all of the views expressed in this research report accurately reflect our views about the subject issuer(s) or securities. We also certify that no part of our compensation was, is, or will be directly or indirectly related to the specific recommendation(s) or view(s) in this report.

Terms & conditions and other disclosures:

Prabhudas Lilladher Pvt. Ltd, Mumbai, India (hereinafter referred to as "PL") is engaged in the business of Stock Broking, Portfolio Manager, Depository Participant and distribution for third party financial products. PL is a subsidiary of Prabhudas Lilladher Advisory Services Pvt Ltd. which has its various subsidiaries engaged in business of commodity broking, investment banking, financial services (margin funding) and distribution of third party financial/other products, details in respect of which are available at www.plindia.com

This document has been prepared by the Research Division of PL and is meant for use by the recipient only as information and is not for circulation. This document is not to be reported or copied or made available to others without prior permission of PL. It should not be considered or taken as an offer to sell or a solicitation to buy or sell any security.

The information contained in this report has been obtained from sources that are considered to be reliable. However, PL has not independently verified the accuracy or completeness of the same. Neither PL nor any of its affiliates, its directors or its employees accepts any responsibility of whatsoever nature for the information, statements and opinion given, made available or expressed herein or for any omission therein.

Recipients of this report should be aware that past performance is not necessarily a guide to future performance and value of investments can go down as well. The suitability or otherwise of any investments will depend upon the recipient's particular circumstances and, in case of doubt, advice should be sought from an independent expert/advisor.

Either PL or its affiliates or its directors or its employees or its representatives or its clients or their relatives may have position(s), make market, act as principal or engage in transactions of securities of companies referred to in this report and they may have used the research material prior to publication.

PL may from time to time solicit or perform investment banking or other services for any company mentioned in this document.

PL is registered as Research Analyst under Securities and Exchange Board of India (Research Analysts) Regulations, 2014 PL submits that no material disciplinary action has been taken on us by any Regulatory Authority impacting Equity Research Analysis activities.

PL or its research analysts or its associates or his relatives do not have any financial interest in the subject company.

PL or its research analysts or its associates or his relatives do not have actual/beneficial ownership of one per cent or more securities of the subject company at the end of the month immediately preceding the date of publication of the research report.

PL or its research analysts or its associates or his relatives do not have any material conflict of interest at the time of publication of the research report.

PL or its associates might have received compensation from the subject company in the past twelve months.

PL or its associates might have managed or co-managed public offering of securities for the subject company in the past twelve months or mandated by the subject company for any other assignment in the past twelve months.

PL or its associates might have received any compensation for investment banking or merchant banking or brokerage services from the subject company in the past twelve months.

PL or its associates might have received any compensation for products or services other than investment banking or merchant banking or brokerage services from the subject company in the past twelve months PL or its associates might have received any compensation or other benefits from the subject company or third party in connection with the research report.

PL encourages independence in research report preparation and strives to minimize conflict in preparation of research report. PL or its analysts did not receive any compensation or other benefits from the subject Company or third party in connection with the preparation of the research report. PL or its Research Analysts do not have any material conflict of interest at the time of publication of this report.

It is confirmed that Mrs.Vaishali Parekh B.com, Research Analyst of this report has not received any compensation from the companies mentioned in the report in the preceding twelve months compensation of our Research Analysts is not based on any specific merchant banking, investment banking or brokerage service transactions.

The Research analysts for this report certifies that all of the views expressed in this report accurately reflect his or her personal views about the subject company or companies and its or their securities, and no part of his or her compensation was, is or will be, directly or indirectly related to specific recommendations or views expressed in this report.

The research analysts for this report has not served as an officer, director or employee of the subject company PL or its research analysts have not engaged in market making activity for the subject company

Our sales people, traders, and other professionals or affiliates may provide oral or written market commentary or trading strategies to our clients that reflect opinions that are contrary to the opinions expressed herein, and our proprietary trading and investing businesses may make investment decisions that are inconsistent with the recommendations expressed herein. In reviewing these materials, you should be aware that any or all of the foregoing, among other things, may give rise to real or potential conflicts of interest.

PL and its associates, their directors and employees may (a) from time to time, have a long or short position in, and buy or sell the securities of the subject company or (b) be engaged in any other transaction involving such securities and earn brokerage or other compensation or act as a market maker in the financial instruments of the subject company or act as an advisor or lender/borrower to the subject company or may have any other potential conflict of interests with respect to any recommendation and other related information and opinions.