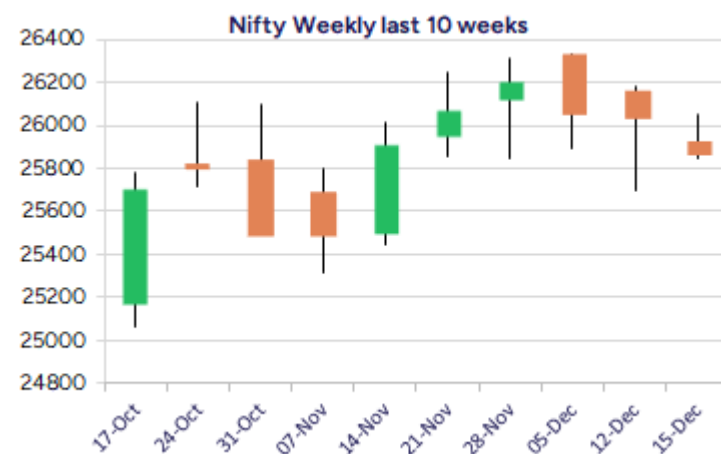
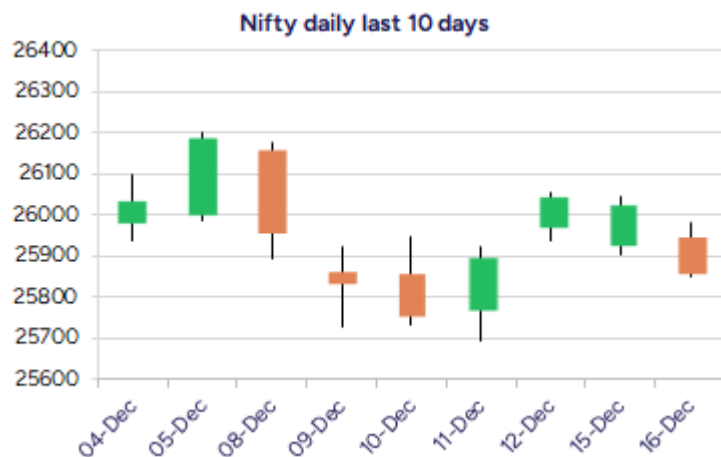


Date: 17<sup>th</sup> December 2025

\* Sensex 84679.86 - 533.50

\* Nifty 25860.10 - 167.20

\* Bank Nifty 59034.60 - 427.20



\*Blue candle → Close rate > Open rate \* Red candle → Close rate < Open rate

## Market Preview

### Nifty slips below 26000 zone

Nifty once again witnessing a weak opening, slipping below the 26000 zone with bias turning slightly cautious along with the broader markets losing steam to end the session near the 25850 zone. BankNifty ended near the 59000 zone with rangebound movement visible for quite some time and would need a decisive breach on either side in the coming days. The market breadth was weak with the advance decline indicating a ratio of 1:2 at close.

## Market Forecast

### Nifty daily range 25750 - 26000

Nifty once again witnessed a weak opening session and extended the losses as the day progressed with a gradual slide slipping below the 26000 zone to end near the 25850-zone turning the bias into a slightly cautious mode. As mentioned earlier, the index would have the important support near the 50EMA level at 25750 zone which needs to be sustained to maintain the overall bias intact and, on the upside, a close above the 26000 zone is necessary to establish conviction and thereafter, to carry on with the positive move further ahead.

BankNifty once again erased the gains witnessed in the previous session and closed near the 59000 level to continue with the consolidation and has been gripped between the tight range of 58800 and 59600 zone for quite some time which desperately needs a breakthrough on either side to confirm a directional move in the coming days. The index would need a barrier of 59700 level and on the downside, as mentioned earlier, the 58800 level is positioned as the important support level.

The support for the day is seen at 25750 levels, while the resistance is seen at 26000 levels. BankNifty would have the daily range of 58500-59600 levels.

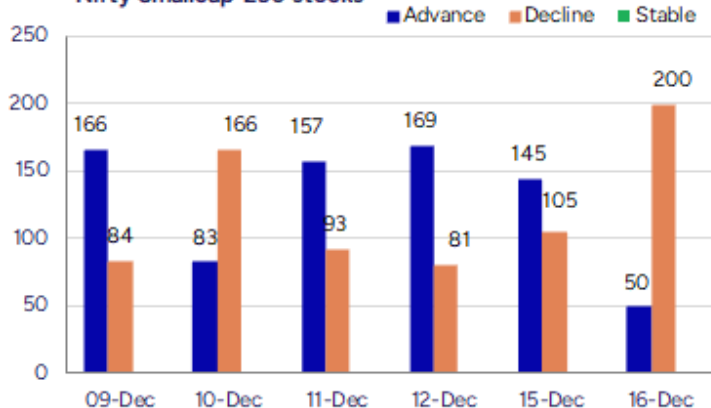
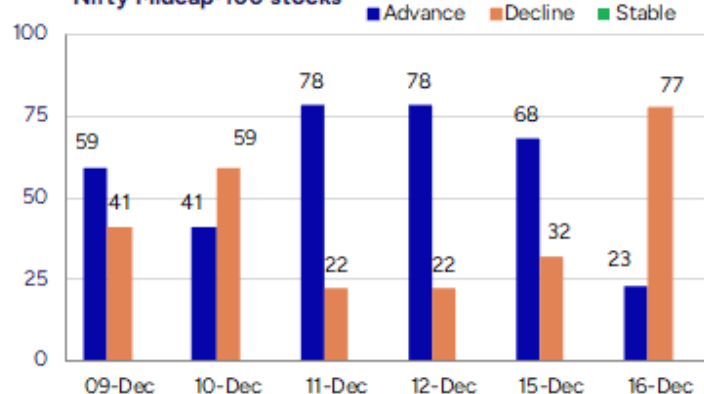
Sensex	Period	Closing	% Chng	Trend	Reversal	2 Sup	1 Sup	Pivot	1 Res	2 Res
Nifty	Daily	25860.10	-0.64%	-1	25916.00	25764	25812	25896	25945	26029
	Weekly	26046.95	-0.53%	-1	26074.20	25490	25769	25973	26251	26456
	Monthly	26202.95	1.87%	2	25767.20	24953	25578	25944	26569	26935
Bank Nifty	Daily	59034.60	-0.72%	-1	59333.20	58743	58889	59112	59258	59481
	Weekly	59389.95	-0.65%	11	59343.40	58399	58894	59301	59797	60203
	Monthly	59752.70	3.42%	2	58620.10	56200	57976	58935	60712	61671
Sensex	Daily	84679.86	-0.63%	-1	84918.75	84347	84514	84787	84953	85226
	Weekly	85267.66	-0.52%	5	85208.75	83492	84380	85040	85928	86588
	Monthly	85706.67	2.11%	2	84235.40	81429	83568	84811	86950	88193

**Gainers - Losers ( Nifty 500 Stocks )**
**Gainers**

Company Name	Last Price	% Gain	Volume
Authum Invest	2808.3	4.55%	243707
Cera Sanitary	5,352.50	3.34%	47372
ABSL AMC	769.75	2.84%	206403
Bharti Hexacom	1,743.60	2.55%	233239
Astral Ltd	1,462.90	2.26%	831634
Chambal Fert	445.80	2.07%	7054226
Bharti Airtel	2,102.00	1.56%	5756330

**Losers**

Company Name	Last Price	% Loss	Volume
Axis Bank	1,219.60	-5.07%	11540855
Eternal	284.45	-4.69%	58623626
AAVAS Financier	1,487.00	-4.01%	311466
eClerx Services	4,467.90	-3.92%	66933
Devyani Int	128.02	-3.61%	2180347
Bharat Dynamics	1355.6	-3.35%	1592002
AIA Engineering	3763.9	-3.34%	45880

**Nifty Smallcap-250 stocks**

**Nifty Midcap-100 stocks**


## Nifty Daily chart with RSI indicator



## BankNifty Daily chart with RSI indicator



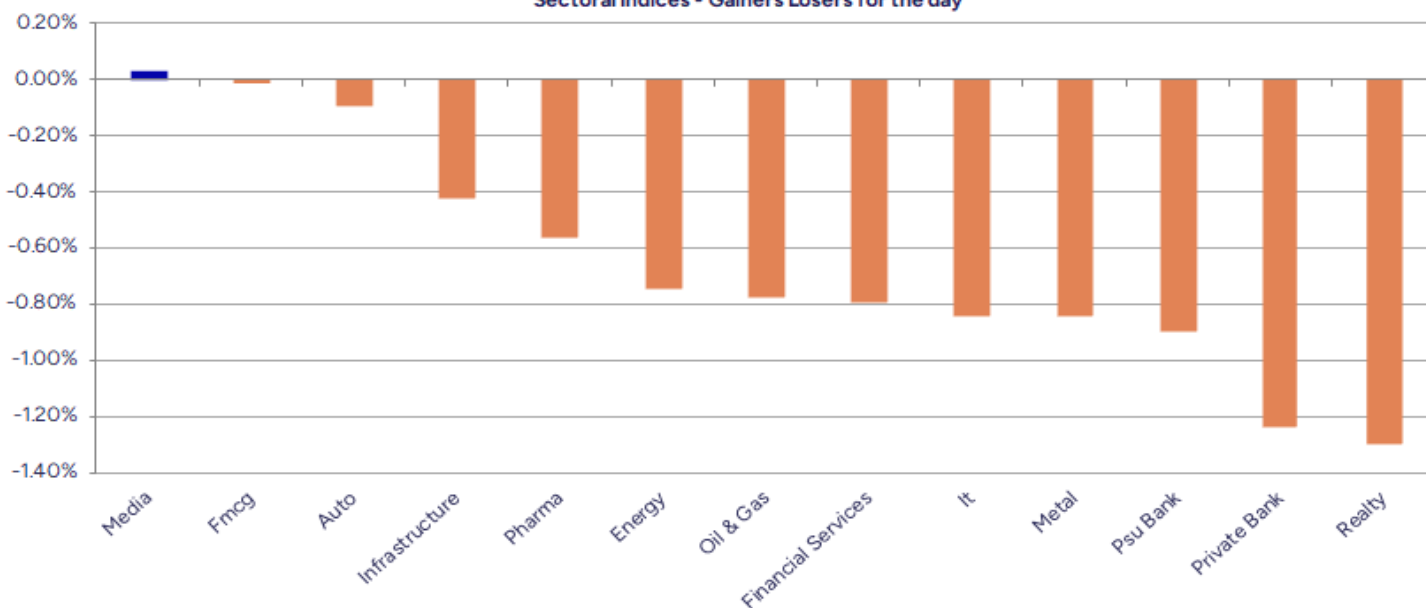
Breakouts - Cross above 200 DMA			
Company Name	LCP	Change %	200 DMA
Enfuse Solution	242	5.21	230.01
Globesecure	13.9	3.81	13.39
Geojit Fin	79.23	3.45	76.59
Saksoft	198.9	3.30	192.55
Fert and Chem	901.5	3.29	872.76
Tainwala Chem	218.2	2.50	212.87
Bharti Hexacom	1743.6	2.48	1701.37
CSL Fin	304.4	2.46	297.1
Gloster	649.25	1.46	639.89
ABSL AMC	766.5	1.20	757.41
Sobha	1468	1.17	1451.01
AVT Natural	67.71	1.03	67.02
S A Tech Softwa	56.3	1.00	55.74
CARE Ratings	1542.4	0.96	1527.73
Raj Oil Mills	49.94	0.79	49.55
Mangalam Cement	759.5	0.74	753.89
Premium Plast	36.9	0.63	36.67
Incredible Ind	40.92	0.61	40.67

\* Stocks crossing above its Simple Moving Average (200DMA)

Breakdown - Cross below 200 DMA			
Company Name	LCP	Change %	200 DMA
Zenithexpo	234.85	-3.71	243.91
BSL	158.07	-3.56	163.9
Federal-Mogul	453.45	-2.45	464.82
Popular Vehicle	121.21	-2.25	124
Bhageria Indu	178.5	-1.79	181.76
Indo Count	278.2	-1.74	283.13
Syngene Intl	647	-1.67	657.99
Fino Payments	261.75	-1.61	266.04
Waaree Energies	2919	-1.53	2964.21
Eris Life	1556.8	-1.52	1580.88
Surana Telecom	19.7	-1.50	20
Advanced Enzyme	306.2	-1.43	310.64
Control Print	717	-1.14	725.27
Coffee Day	35.25	-1.12	35.65
Chavda Infra	120.3	-1.10	121.64
JTEKT India	141.15	-1.09	142.7
Fonebox Retail	95.8	-0.98	96.75
Ind-Swift Labs	95.42	-0.95	96.34

\* Stocks crossing below its Simple Moving Average (200DMA)

Sectoral Indices - Gainers Losers for the day



Stocks witnessing a volume surge as compared to their 5 day average volur

Watch out for the stocks that have seen a huge spurt in its share price over the last three days

Volume Shockers - NSE					
Company name	LCP	% Chg	Volume	Avg Vol *	% Chg
NDTV	91.03	10.18	3947603	8807	44724
Fert and Chem	891.95	3.95	249393	6168	3943
BL Kashyap	52.56	-1.18	567715	16528	3335
EPack Durables	294.85	13.82	3824995	120705	3069
Aamcol Tools	124.4	-4.31	45868	1520	2918
Tainwala Chem	212.4	11.58	42906	1445	2869
Kirloskar Oil	1252	10.16	424434	14301	2868
BF Utilities	643.55	4.99	43648	1512	2786
Jubilant Food	560.45	-2.94	1059461	43644	2328
Anirit Ventures	91.44	4.99	28732	1308	2097
Ion Exchange	390.3	2	617998	32230	1817
Agri-Tech	170.8	17.75	51146	2938	1641
Bharti Hexacom	1739.1	2.26	267215	16564	1513
Exicom Tele-Sys	123.55	8.47	888032	64548	1276
Anka Ind	36.4	-2.7	80426	5889	1266
AAVAS Financier	1494.5	-3.57	95877	7079	1254
South Asian Ent	51.45	5	13293	1014	1211
Nazara	243.05	6.95	232715	19281	1107
Info Edge	1344.7	-1.25	112165	9345	1100
CM	71.95	-1.99	47207	3949	1096
IMEC Services	226.2	4.99	19563	1678	1066

Price Shockers - NSE				
Company name	LCP	Prv Close	% Chg	Volume
Tainwala Chem	215.3	158.65	35.71	42916
Agri-Tech	170.8	129.05	32.35	51146
Asahi Songwon	311.85	251.8	23.85	23278
Samor Reality	80	64.73	23.59	24790
Shakti Pumps	779.7	649.7	20.01	3099758
Refex Ind	302	254.35	18.73	1818392
DJ Mediaprint	69.9	59.19	18.09	102688
Bhatia Colour	355.75	301.55	17.97	21600
Mahamaya Life	161.4	138	16.96	1417200
Bemco Hydraulic	116	100.7	15.19	32908
WPIL	422.9	370.75	14.07	236789
Shri Rama Multi	61.67	54.29	13.59	194405
Praj Industries	345	303.75	13.58	1435577
Geojit Fin	79.2	70.01	13.13	1547473
Ion Exchange	396.65	351.15	12.96	617999
LLOYDS ENTER	65	57.89	12.28	929295
Archit Organosy	44.9	40.35	11.28	28772
Bigbloc Constru	73.5	66.38	10.73	64245
NDTV	91.03	82.24	10.69	3947603
Best Agrolife	402.85	364.4	10.55	23296
A-1	2055.1	1864.05	10.25	142254



Nifty 50 stocks - Summary Details											
Symbol	LTP	Chng	% Chng	Volume (lacs)	Turnover (crs.)	52w High	Diff with 52w H	52w Low	Diff with 52w L	30 days % chng	365 days % chng
NIFTY 50	25860.10	-167.20	-0.64%	2643.08	23552.31	26325.80	1.77%	21743.65	18.93%	0.45%	5.08%
ADANIENT	2242.00	-36.90	-1.62%	6.55	147.19	2616.50	14.31%	1967.52	13.95%	-9.45%	-9.84%
ADANIPTS	1497.90	-14.70	-0.97%	11.22	168.55	1549.00	3.30%	1010.75	48.20%	-0.01%	20.05%
APOLLOHOSP	7045.00	-41.50	-0.59%	3.85	273.11	8099.50	13.02%	6001.00	17.40%	-4.50%	-2.38%
ASIANPAINT	2785.00	4.80	0.17%	9.16	255.86	2985.70	6.72%	2124.75	31.07%	-4.34%	15.47%
AXISBANK	1219.00	-65.80	-5.12%	115.41	1422.51	1304.00	6.52%	933.50	30.58%	3.48%	11.90%
BAJAJ-AUTO	8989.00	49.00	0.55%	2.79	250.36	9490.00	5.28%	7089.35	26.80%	1.10%	-0.90%
BAJAJFINSV	2034.90	-35.60	-1.72%	5.06	103.46	2195.00	7.29%	1551.65	31.14%	0.23%	23.27%
BAJFINANCE	997.10	-15.60	-1.54%	38.61	386.90	1102.50	9.56%	679.20	46.81%	-0.57%	-85.90%
BEL	387.30	-3.45	-0.88%	86.98	336.75	436.00	11.17%	240.25	61.21%	-8.46%	23.79%
BHARTIARTL	2104.90	35.20	1.70%	57.56	1207.50	2174.50	3.20%	1559.50	34.97%	-1.48%	23.07%
CIPLA	1500.00	-8.00	-0.53%	7.89	118.61	1673.00	10.34%	1335.00	12.36%	-1.57%	4.19%
COALINDIA	382.15	-2.30	-0.60%	51.10	194.58	417.25	8.41%	349.25	9.42%	-0.65%	-6.30%
DRREDDY	1272.50	-8.10	-0.63%	9.28	118.70	1405.90	9.49%	1020.00	24.75%	2.78%	2.75%
EICHERMOT	7042.00	-79.50	-1.12%	5.06	357.65	7328.50	3.91%	4646.00	51.57%	6.37%	47.57%
ETERNAL	284.50	-13.95	-4.67%	586.27	1682.12	368.45	22.78%	194.80	46.05%	-1.74%	#VALUE!
GRASIM	2786.20	-34.80	-1.23%	5.46	153.41	2977.80	6.43%	2276.95	22.37%	1.35%	4.76%
HCLTECH	1651.80	-32.20	-1.91%	19.29	318.99	2012.20	17.91%	1302.75	26.79%	5.61%	-14.47%
HDFCBANK	994.20	-1.90	-0.19%	200.47	1994.20	1020.50	2.58%	812.15	22.42%	0.66%	-46.78%
HDFCLIFE	763.40	-9.30	-1.20%	21.25	164.80	820.75	6.99%	584.30	30.65%	-0.13%	22.16%
HINDALCO	836.05	-11.80	-1.39%	27.13	227.07	864.00	3.23%	546.45	53.00%	5.50%	28.05%
HINDUNILVR	2279.90	-13.60	-0.59%	12.56	287.65	2750.00	17.09%	2136.00	6.74%	-5.53%	-4.04%
ICICIBANK	1366.60	1.40	0.10%	123.60	1685.46	1500.00	8.89%	1186.00	15.23%	-0.57%	1.51%
INDIGO	4966.00	0.50	0.01%	23.89	1189.86	6232.50	20.32%	3945.00	25.88%	-15.96%	12.01%
INFY	1592.60	-14.20	-0.88%	54.99	875.27	1999.60	20.35%	1307.00	21.85%	6.92%	-19.65%
ITC	402.00	-0.30	-0.07%	123.47	497.71	491.00	18.13%	390.15	3.04%	-1.43%	-14.40%
JIOFIN	294.70	-4.90	-1.64%	71.37	211.04	342.45	13.94%	198.65	48.35%	-4.86%	-11.82%
JSWSTEEL	1085.10	-29.70	-2.66%	20.00	217.72	1223.90	11.34%	880.00	23.31%	-4.54%	11.50%
KOTAKBANK	2184.00	2.70	0.12%	17.09	372.93	2301.90	5.12%	1723.75	26.70%	4.89%	20.80%
LT	4060.00	-32.30	-0.79%	21.99	893.55	4140.00	1.93%	2965.30	36.92%	2.20%	5.28%
M&M	3628.90	20.90	0.58%	13.94	504.44	3795.00	4.38%	2425.00	49.65%	-2.45%	17.09%
MARUTI	16326.00	-89.00	-0.54%	1.56	255.72	16660.00	2.00%	10725.00	52.22%	4.66%	45.62%
MAXHEALTH	1070.00	-15.40	-1.42%	14.44	155.82	1314.30	18.59%	940.05	13.82%	-1.60%	-8.02%
NESTLEIND	1241.50	-2.00	-0.16%	10.86	135.52	1311.60	5.34%	1055.00	17.68%	-2.21%	-44.82%
NTPC	320.25	-3.70	-1.14%	52.40	168.26	371.45	13.78%	292.80	9.38%	-1.37%	-9.30%
ONGC	232.25	-3.10	-1.32%	72.38	168.15	273.50	15.08%	205.00	13.29%	-4.95%	-7.43%
POWERGRID	260.00	-2.20	-0.84%	92.37	241.40	336.25	22.68%	247.30	5.14%	-3.35%	-21.46%
RELIANCE	1540.70	-15.50	-1.00%	117.31	1811.61	1581.30	2.57%	1114.85	38.20%	2.46%	22.26%
SBILIFE	2040.00	5.10	0.25%	8.16	166.59	2086.60	2.23%	1372.55	48.63%	1.70%	42.42%
SBIN	960.00	-7.25	-0.75%	47.63	458.84	999.00	3.90%	680.00	41.18%	-0.06%	12.27%
SHRIRAMFIN	845.80	-9.55	-1.12%	51.71	439.92	872.00	3.00%	493.35	71.44%	5.69%	-72.95%
SUNPHARMA	1783.20	-13.90	-0.77%	15.34	273.78	1910.00	6.64%	1548.00	15.19%	2.28%	-0.90%
TATACONSUM	1172.00	14.60	1.26%	11.81	138.22	1202.80	2.56%	882.90	32.74%	-0.03%	24.49%
TMPV	345.45	-1.70	-0.49%	83.89	290.29	810.00	57.35%	341.40	1.19%	-11.26%	#VALUE!
TATASTEEL	169.80	-3.07	-1.78%	229.71	390.98	186.94	9.17%	122.62	38.48%	-0.80%	16.06%
TCS	3206.60	-23.60	-0.73%	17.35	555.89	4475.00	28.34%	2866.60	11.86%	4.00%	-27.80%
TECHM	1575.00	-0.40	-0.03%	9.99	157.35	1793.50	12.18%	1209.40	30.23%	9.46%	-12.30%
TITAN	3930.00	63.80	1.65%	15.61	609.45	3956.00	0.66%	2925.00	34.36%	0.97%	10.18%
TRENT	4111.00	2.00	0.05%	5.62	231.13	7493.05	45.14%	3930.10	4.60%	-6.43%	-41.30%
ULTRACEMCO	11520.00	-208.00	-1.77%	1.80	207.94	13097.00	12.04%	10047.85	14.65%	-1.23%	-2.95%
WIPRO	259.30	-2.44	-0.93%	29.82	77.50	324.60	20.12%	228.00	13.73%	7.11%	-15.55%

## Disclaimer / Disclosures

### ANALYST CERTIFICATION

I, Mrs. Vaishali Parekh B.com, Research Analyst, author and the name subscribed to this report, hereby certify that all of the views expressed in this research report accurately reflect our views about the subject issuer(s) or securities. We also certify that no part of our compensation was, is, or will be directly or indirectly related to the specific recommendation(s) or view(s) in this report.

Terms & conditions and other disclosures:

Prabhudas Lilladher Pvt. Ltd, Mumbai, India (hereinafter referred to as "PL") is engaged in the business of Stock Broking, Portfolio Manager, Depository Participant and distribution for third party financial products. PL is a subsidiary of Prabhudas Lilladher Advisory Services Pvt Ltd. which has its various subsidiaries engaged in business of commodity broking, investment banking, financial services (margin funding) and distribution of third party financial/other products, details in respect of which are available at [www.plindia.com](http://www.plindia.com)

This document has been prepared by the Research Division of PL and is meant for use by the recipient only as information and is not for circulation. This document is not to be reported or copied or made available to others without prior permission of PL. It should not be considered or taken as an offer to sell or a solicitation to buy or sell any security.

The information contained in this report has been obtained from sources that are considered to be reliable. However, PL has not independently verified the accuracy or completeness of the same. Neither PL nor any of its affiliates, its directors or its employees accepts any responsibility of whatsoever nature for the information, statements and opinion given, made available or expressed herein or for any omission therein.

Recipients of this report should be aware that past performance is not necessarily a guide to future performance and value of investments can go down as well. The suitability or otherwise of any investments will depend upon the recipient's particular circumstances and, in case of doubt, advice should be sought from an independent expert/advisor.

Either PL or its affiliates or its directors or its employees or its representatives or its clients or their relatives may have position(s), make market, act as principal or engage in transactions of securities of companies referred to in this report and they may have used the research material prior to publication.

PL may from time to time solicit or perform investment banking or other services for any company mentioned in this document.

PL is registered as Research Analyst under Securities and Exchange Board of India (Research Analysts) Regulations, 2014 PL submits that no material disciplinary action has been taken on us by any Regulatory Authority impacting Equity Research Analysis activities.

PL or its research analysts or its associates or his relatives do not have any financial interest in the subject company.

PL or its research analysts or its associates or his relatives do not have actual/beneficial ownership of one per cent or more securities of the subject company at the end of the month immediately preceding the date of publication of the research report.

PL or its research analysts or its associates or his relatives do not have any material conflict of interest at the time of publication of the research report.

PL or its associates might have received compensation from the subject company in the past twelve months.

PL or its associates might have managed or co-managed public offering of securities for the subject company in the past twelve months or mandated by the subject company for any other assignment in the past twelve months.

PL or its associates might have received any compensation for investment banking or merchant banking or brokerage services from the subject company in the past twelve months.

PL or its associates might have received any compensation for products or services other than investment banking or merchant banking or brokerage services from the subject company in the past twelve months PL or its associates might have received any compensation or other benefits from the subject company or third party in connection with the research report.

PL encourages independence in research report preparation and strives to minimize conflict in preparation of research report. PL or its analysts did not receive any compensation or other benefits from the subject Company or third party in connection with the preparation of the research report. PL or its Research Analysts do not have any material conflict of interest at the time of publication of this report.

It is confirmed that Mrs.Vaishali Parekh B.com, Research Analyst of this report has not received any compensation from the companies mentioned in the report in the preceding twelve months compensation of our Research Analysts is not based on any specific merchant banking, investment banking or brokerage service transactions.

The Research analysts for this report certifies that all of the views expressed in this report accurately reflect his or her personal views about the subject company or companies and its or their securities, and no part of his or her compensation was, is or will be, directly or indirectly related to specific recommendations or views expressed in this report.

The research analysts for this report has not served as an officer, director or employee of the subject company PL or its research analysts have not engaged in market making activity for the subject company

Our sales people, traders, and other professionals or affiliates may provide oral or written market commentary or trading strategies to our clients that reflect opinions that are contrary to the opinions expressed herein, and our proprietary trading and investing businesses may make investment decisions that are inconsistent with the recommendations expressed herein. In reviewing these materials, you should be aware that any or all of the foregoing, among other things, may give rise to real or potential conflicts of interest.

PL and its associates, their directors and employees may (a) from time to time, have a long or short position in, and buy or sell the securities of the subject company or (b) be engaged in any other transaction involving such securities and earn brokerage or other compensation or act as a market maker in the financial instruments of the subject company or act as an advisor or lender/borrower to the subject company or may have any other potential conflict of interests with respect to any recommendation and other related information and opinions.