

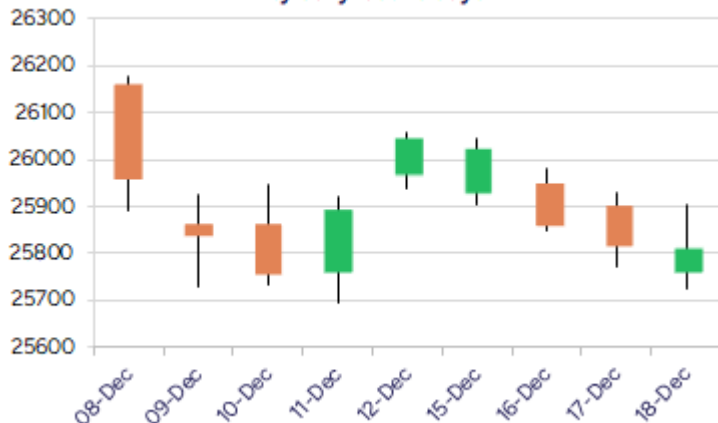
Date: 19th December 2025

* Sensex 84481.81 -77.84

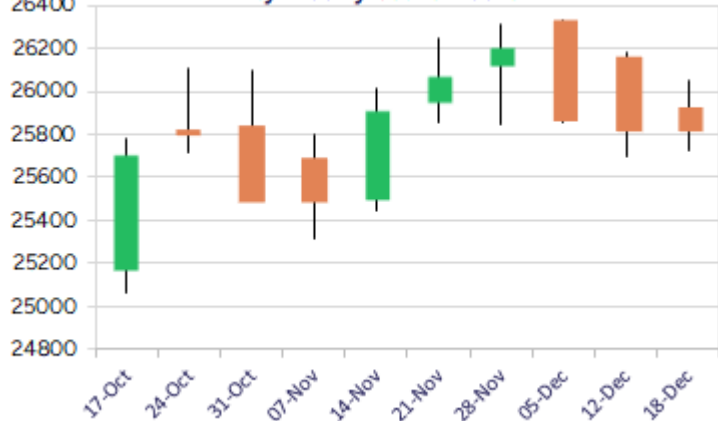
* Nifty 25815.55 -03.00

* Bank Nifty 58912.85 -13.90

Nifty daily last 10 days



Nifty Weekly last 10 weeks



*Blue candle → Close rate > Open rate * Red candle → Close rate < Open rate

Market Preview

Nifty ends flat amid volatility

Nifty recovered significantly after the initial lull opening but finding resistance near the 25800 zone slipped again to end on a flat note near the 25800 level with bias maintained with a cautious approach. BankNifty continue to remain rangebound with some fluctuations witnessed to end on a flat note with bias remaining intact. The market breadth was overall slightly weak with the advance decline indicating a ratio of 2:3 at close.

Market Forecast

Nifty daily range 25700-26000

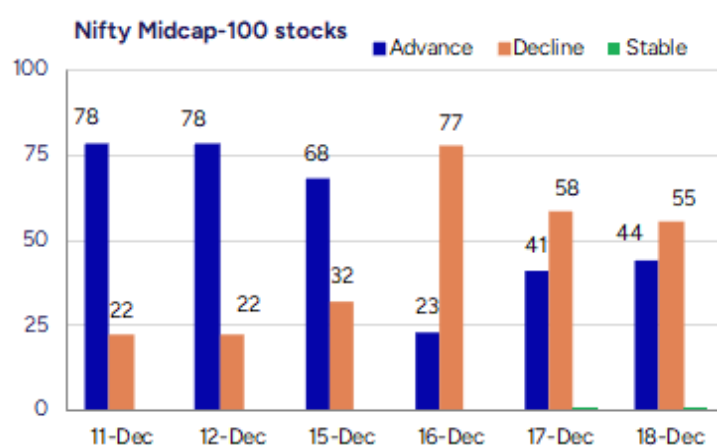
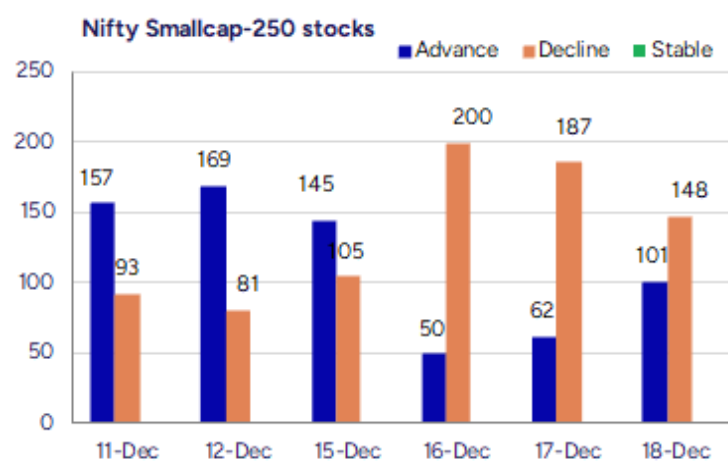
Nifty after a flat opening recovered significantly to touch the 25900 zone but thereafter fizzled out to erase the gains and closed on a flat note near the 25800 zone with bias precariously placed having the important and crucial support near the 50EMA level at 25750 zone which needs to be sustained to maintain the overall trend intact. The index indicating a lower top formation on the daily chart resisting near the 26050 zone has slipped down and once again would need a pullback to close above the 26000 level to regain strength and establish conviction to anticipate for further upward move in the coming days.

BankNifty amid some volatility ended on a flat note with the index making a high near the 59200 zone during the intraday session but losing steam in the second half to slip down to close near the 58900 level with bias overall maintained intact but with a cautious approach as of now. As mentioned earlier, the index has the crucial support zone near the 58700 zone and with a tight rangebound movement visible for quite some time, would need a decisive breach above the 59600 level to establish conviction and thereafter, anticipate for further upward move in the coming days. The support for the day is seen at 25700 levels, while the resistance is seen at 26000 levels. BankNifty would have the daily range of 58500-59600 levels.

Sensex	Period	Closing	% Chng	Trend	Reversal	2 Sup	1 Sup	Pivot	1 Res	2 Res
Nifty	Daily	25815.55	-0.01%	-3	25881.60	25639	25727	25815	25903	25991
	Weekly	26046.95	-0.53%	-1	26074.20	25490	25769	25973	26251	26456
	Monthly	26202.95	1.87%	2	25767.20	24953	25578	25944	26569	26935
Bank Nifty	Daily	58912.85	-0.02%	-3	59165.20	58447	58680	58946	59178	59444
	Weekly	59389.95	-0.65%	11	59343.40	58399	58894	59301	59797	60203
	Monthly	59752.70	3.42%	2	58620.10	56200	57976	58935	60712	61671
Sensex	Daily	84418.81	-0.17%	-3	84747.65	83937	84178	84479	84720	85021
	Weekly	85267.66	-0.52%	5	85208.75	83492	84380	85040	85928	86588
	Monthly	85706.67	2.11%	2	84235.40	81429	83568	84811	86950	88193

Gainers - Losers (Nifty 500 Stocks)

Gainers				Losers			
Company Name	Last Price	% Gain	Volume	Company Name	Last Price	% Loss	Volume
Ashok Leyland	171.57	3.27%	21603206	Cummins	4,385.40	-2.82%	518442
Brainbees Solu	297.75	2.92%	2101491	CenturyPlyboard	818	-2.73%	46510
CG Consumer	255.65	2.61%	15018050	Aster DM Health	592.00	-2.70%	583553
CAMS	752.30	2.52%	2495052	Cera Sanitary	5,291.00	-2.58%	21043
Guj Mineral	515.05	2.43%	3971242	Chennai Petro	891.05	-2.51%	603275
BSE Limited	2,682.90	1.99%	4499980	Authum Invest	2702.2	-2.50%	34351
Brigade Ent	876.15	1.88%	197664	Action Const	925.2	-2.34%	159222



Nifty Daily chart with RSI indicator



BankNifty Daily chart with RSI indicator



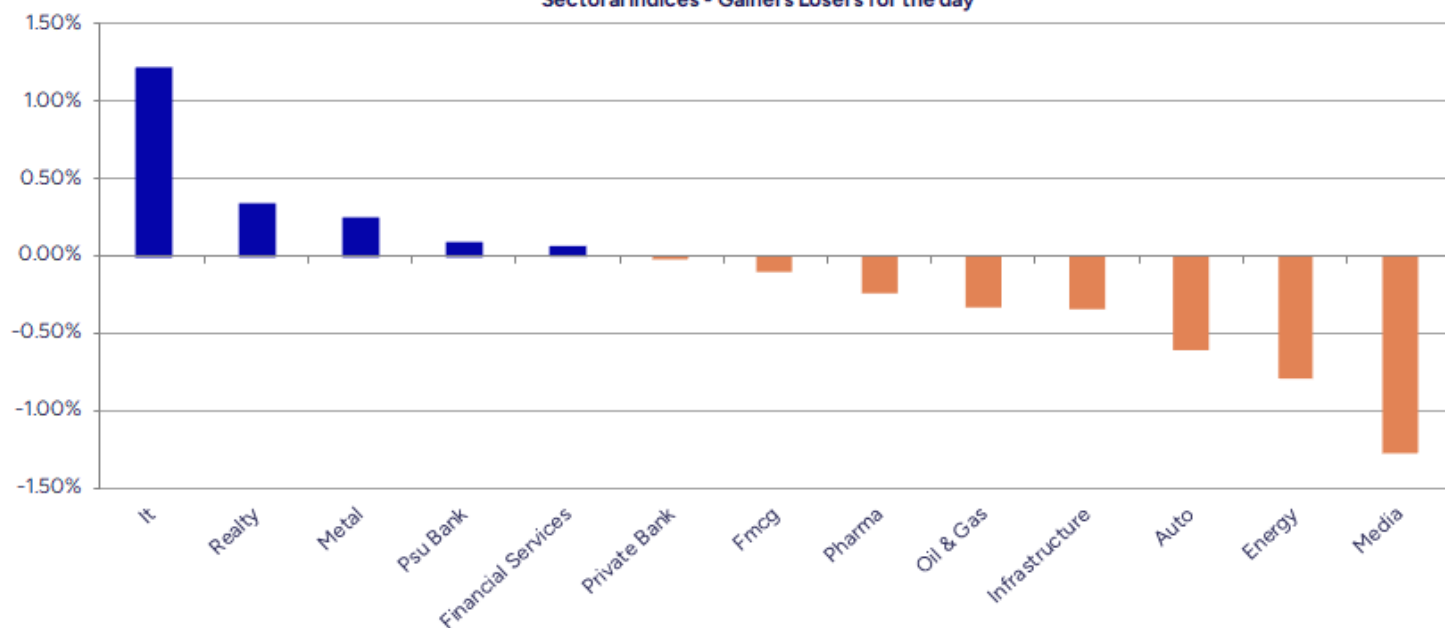
Breakouts - Cross above 200 DMA			
Company Name	LCP	Change %	200 DMA
Bliss GVS	159.18	9.55	145.31
SEL Mgf Company	36.11	9.16	33.08
Kernex Micro	1140.4	8.13	1054.62
Walchandnagar	197.53	4.05	189.85
LLOYDS ENTER	66.71	3.59	64.4
Amiable Logisti	80.95	3.53	78.19
Shreeoswal Seed	14.71	3.37	14.23
Motilal Oswal	867.7	3.02	842.26
ICE Make Refrig	801.2	2.16	784.23
Manba Finance	140.28	1.86	137.72
Chavda Infra	123.5	1.80	121.32
Barak Vally Cem	43.26	1.67	42.55
Manaksia Steels	60.14	1.57	59.21
DB Corp	260.4	1.53	256.48
Blue Star	1852.5	1.07	1832.85
Expleo Solution	1041.2	1.03	1030.61
Enfuse Solution	232	0.92	229.89
TCS	3280.8	0.63	3260.16

* Stocks crossing above its Simple Moving Average (200DMA)

Breakdown - Cross below 200 DMA			
Company Name	LCP	Change %	200 DMA
Amines Plast	207.42	-5.47	219.43
S A Tech Softwa	52.7	-5.28	55.64
Premium Plast	34.8	-4.81	36.56
Raj Oil Mills	47.66	-3.85	49.57
Landmark Cars	496.55	-3.50	514.57
AVT Natural	65.02	-3.06	67.07
Utssav CZ Gold	211.05	-2.88	217.3
Incredible Ind	39.6	-2.85	40.76
Ken Enterprises	43.5	-2.84	44.77
Lead Reclaim	73.7	-2.68	75.73
Bhartiya Inter	724.25	-2.22	740.72
AksharChem	251.4	-1.80	256.02
JSW Holdings	20120	-1.38	20402.29
United Spirits	1391.2	-1.25	1408.8
Pritish Nandy	28.21	-1.12	28.53
Varvee Global	150.36	-1.06	151.97
Aeroflex Ind.	178	-1.06	179.91
Ramky Infra	542.05	-0.96	547.29

* Stocks crossing below its Simple Moving Average (200DMA)

Sectoral Indices - Gainers Losers for the day



Stocks witnessing a volume surge as compared to their 5 day average volume

Watch out for the stocks that have seen a huge spurt in its share price over the last three days

Volume Shockers - NSE					
Company name	LCP	% Chg	Volume	Avg Vol *	% Chg
Shree Digvijay	90.2	0.93	66773161	20440	326585
Antony Waste	522.5	19.99	623639	2470	25149
IRB InvIT	62	1.03	6060248	29983	20112
R K Swamy	118.5	5.61	216662	1541	13960
Safari Ind	2204.1	-0.81	101018	1014	9864
Route	723.6	6.28	445744	5788	7601
Blue Dart	5300	-0.44	78445	1635	4699
UVS Hospitality	124.85	4.04	83779	1841	4451
Prestige Estate	1595.45	-0.7	204869	4913	4070
Gabriel India	1090.15	13.71	561526	14460	3783
Bliss GVS	159.5	10.19	1362226	35742	3711
Aurobindo Pharm	1211	1.5	242451	8160	2871
Systematix Corp	154	-3.66	210617	7237	2810
Aartech Solonic	47.8	-2.9	47079	1687	2690
Genesys Int	428.25	3.89	166341	6622	2412
SEL Mgf Company	35.52	9.12	41365	1649	2408
Lykis	45.46	19.98	333071	17090	1849
GNA Axles	306.5	-0.36	35814	1881	1804
Tube Investment	2576.4	-1.48	61592	3488	1666
Gloster	636.9	-0.65	17194	1148	1398
Sumedha Fiscal	48.75	-3.33	40186	2802	1334

Price Shockers - NSE				
Company name	LCP	Prv Close	% Chg	Volume
Agri-Tech	171.85	129.05	33.17	29070
Meesho	216.35	165.2	30.96	17453633
Mahamaya Life	173	138	25.36	742800
Tainwala Chem	197.3	158.65	24.36	6058
Amines Plast	221.25	178	24.3	26134
Bhatia Colour	370	301.55	22.7	24800
GEM Enviro Mana	56.4	47	20	53600
Dishman Carbogel	263.85	220.05	19.9	81279
Spice Islands	121.94	105.35	15.75	40169
Pioneer Invest	109.24	94.38	15.74	8298
ELITECON INTL	126.6	109.38	15.74	1179370
Shlokka Dyes	43.33	37.44	15.73	7200
Supertech EV	78.21	67.58	15.73	15600
Reliance Infra	157.5	136.1	15.72	151415
Coromandel Engg	79.56	68.75	15.72	2979
Onix Solar	333.8	288.45	15.72	82142
Shukra Pharma	59.2	51.16	15.72	314054
AAYUSH WELLNESS	43.16	37.3	15.71	6202
BHARAT GLOBAL	155.95	134.8	15.69	14315
IMEC Services	237.3	205.2	15.64	5332
Transworld Ship	209.15	181	15.55	13071

Nifty 50 stocks - Summary Details											
Symbol	LTP	Chng	% Chng	Volume (lacs)	Turnover (crs.)	52w High	Diff with 52w H	52w Low	Diff with 52w L	30 days % chng	365 days % chng
NIFTY 50	25815.55	-3.00	-0.01%	1975.23	20043.26	26325.80	1.94%	21743.65	18.73%	-0.35%	4.66%
ADANIENT	2228.20	-4.30	-0.19%	5.08	113.33	2616.50	14.84%	1967.52	13.25%	-11.30%	-11.14%
ADANIPTS	1497.40	11.10	0.75%	6.84	101.74	1549.00	3.33%	1010.75	48.15%	-1.75%	19.56%
APOLLOHOSP	6929.00	7.50	0.11%	3.85	266.17	8099.50	14.45%	6001.00	15.46%	-6.72%	-4.65%
ASIANPAINT	2758.40	-27.30	-0.98%	4.18	115.57	2985.70	7.61%	2124.75	29.82%	-4.15%	15.96%
AXISBANK	1229.80	5.10	0.42%	34.41	423.78	1304.00	5.69%	933.50	31.74%	-1.36%	6.41%
BAJAJ-AUTO	8826.50	-68.50	-0.77%	3.38	297.80	9490.00	6.99%	7089.35	24.50%	0.59%	-1.15%
BAJAJFINSV	2026.00	4.80	0.24%	4.39	88.86	2195.00	7.70%	1551.65	30.57%	-2.16%	20.77%
BAJFINANCE	1001.00	1.40	0.14%	31.03	310.83	1102.50	9.21%	679.20	47.38%	-1.86%	-86.13%
BEL	383.05	-2.55	-0.66%	75.04	287.59	436.00	12.14%	240.25	59.44%	-9.66%	21.95%
BHARTIARTL	2098.30	-9.70	-0.46%	37.60	789.86	2174.50	3.50%	1559.50	34.55%	0.35%	26.79%
CIPLA	1496.90	-	#VALUE!	9.74	146.16	1673.00	10.53%	1335.00	12.13%	-2.30%	3.34%
COALINDIA	385.15	0.40	0.10%	23.79	91.65	417.25	7.69%	349.25	10.28%	-0.57%	-6.26%
DRREDDY	1280.00	8.00	0.63%	8.90	113.52	1405.90	8.96%	1020.00	25.49%	2.09%	0.16%
EICHERMOT	7090.00	-44.50	-0.62%	3.28	231.99	7328.50	3.25%	4646.00	52.60%	6.56%	47.45%
ETERNAL	285.00	0.55	0.19%	141.59	402.15	368.45	22.65%	194.80	46.30%	-6.35%	#VALUE!
GRASIM	2805.00	-1.60	-0.06%	2.53	70.91	2977.80	5.80%	2276.95	23.19%	0.83%	4.52%
HCLTECH	1663.00	8.00	0.48%	18.22	302.58	2012.20	17.35%	1302.75	27.65%	3.79%	-15.32%
HDFCBANK	980.00	-4.00	-0.41%	149.12	1463.56	1020.50	3.97%	812.15	20.67%	-0.57%	-47.24%
HDFCLIFE	757.95	4.45	0.59%	7.32	55.20	820.75	7.65%	584.30	29.72%	-2.61%	18.67%
HINDALCO	855.00	6.20	0.73%	41.74	356.90	864.00	1.04%	546.45	56.46%	5.62%	29.89%
HINDUNILVR	2268.90	-6.70	-0.29%	10.57	239.63	2750.00	17.49%	2136.00	6.22%	-6.27%	-3.83%
ICICIBANK	1357.00	4.60	0.34%	73.14	994.84	1500.00	9.53%	1186.00	14.42%	-1.50%	0.47%
INDIGO	5125.00	144.50	2.90%	42.60	2157.73	6232.50	17.77%	3945.00	29.91%	-15.71%	13.02%
INFY	1627.10	25.10	1.57%	65.76	1067.79	1984.95	18.03%	1307.00	24.49%	6.60%	-19.09%
ITC	400.85	1.05	0.26%	72.27	289.61	491.00	18.36%	390.15	2.74%	-2.05%	-14.95%
JIOFIN	292.35	-0.80	-0.27%	64.77	189.16	340.90	14.24%	198.65	47.17%	-6.91%	-13.87%
JSWSTEEL	1081.50	2.20	0.20%	11.35	122.91	1223.90	11.63%	880.00	22.90%	-7.58%	8.98%
KOTAKBANK	2167.00	-6.20	-0.29%	11.27	244.14	2301.90	5.86%	1723.75	25.71%	4.50%	20.44%
LT	4028.40	-34.00	-0.84%	10.04	405.91	4140.00	2.70%	2965.30	35.85%	1.45%	4.76%
M&M	3585.00	-27.80	-0.77%	24.46	872.96	3795.00	5.53%	2425.00	47.84%	-2.32%	17.11%
MARUTI	16306.00	-92.00	-0.56%	2.14	349.47	16660.00	2.12%	10725.00	52.04%	4.55%	45.41%
MAXHEALTH	1048.00	16.90	1.64%	51.52	538.10	1314.30	20.26%	940.05	11.48%	-6.53%	-12.97%
NESTLEIND	1230.80	-3.80	-0.31%	7.07	87.51	1311.60	6.16%	1055.00	16.66%	-2.91%	-44.85%
NTPC	318.55	-2.70	-0.84%	55.54	176.78	371.45	14.24%	292.80	8.79%	-2.19%	-8.97%
ONGC	231.68	-1.23	-0.53%	39.64	92.04	273.50	15.29%	205.00	13.01%	-5.93%	-7.50%
POWERGRID	257.90	-3.20	-1.23%	109.28	281.46	335.55	23.14%	247.30	4.29%	-3.76%	-22.06%
RELIANCE	1543.50	-0.90	-0.06%	65.81	1016.89	1581.30	2.39%	1114.85	38.45%	1.68%	21.77%
SBILIFE	2016.80	6.60	0.33%	3.01	60.67	2086.60	3.35%	1372.55	46.94%	0.46%	41.40%
SBIN	976.50	0.65	0.07%	49.26	481.72	999.00	2.25%	680.00	43.60%	0.83%	13.35%
SHRIRAMFIN	866.00	1.80	0.21%	124.81	1086.96	876.90	1.24%	493.35	75.53%	6.78%	-72.46%
SUNPHARMA	1746.00	-46.90	-2.62%	34.61	604.68	1910.00	8.59%	1548.00	12.79%	2.04%	-0.93%
TATACONSUM	1169.00	-10.80	-0.92%	5.68	66.71	1202.80	2.81%	882.90	32.40%	1.90%	28.19%
TMPV	346.25	-0.10	-0.03%	154.11	528.04	810.00	57.25%	337.70	2.53%	-11.46%	#VALUE!
TATASTEEL	167.95	-2.39	-1.40%	131.51	222.31	186.94	10.16%	122.62	36.97%	-2.25%	15.26%
TCS	3281.20	63.40	1.97%	23.06	751.89	4432.95	25.98%	2866.60	14.46%	3.60%	-27.12%
TECHM	1605.00	25.60	1.62%	17.48	278.42	1789.15	10.29%	1209.40	32.71%	9.74%	-11.05%
TITAN	3919.90	12.00	0.31%	5.17	201.96	3956.00	0.91%	2925.00	34.01%	2.06%	13.66%
TRENT	4034.00	-11.20	-0.28%	6.14	246.90	7493.05	46.16%	3930.10	2.64%	-7.88%	-42.21%
ULTRACEMCO	11465.00	-75.00	-0.65%	1.03	118.63	13097.00	12.46%	10047.85	14.10%	-2.81%	-3.37%
WIPRO	264.09	2.95	1.13%	90.07	237.27	324.60	18.64%	228.00	15.83%	6.86%	-15.54%

Disclaimer / Disclosures

ANALYST CERTIFICATION

I, Mrs. Vaishali Parekh B.com, Research Analyst, author and the name subscribed to this report, hereby certify that all of the views expressed in this research report accurately reflect our views about the subject issuer(s) or securities. We also certify that no part of our compensation was, is, or will be directly or indirectly related to the specific recommendation(s) or view(s) in this report.

Terms & conditions and other disclosures:

Prabhudas Lilladher Pvt. Ltd, Mumbai, India (hereinafter referred to as "PL") is engaged in the business of Stock Broking, Portfolio Manager, Depository Participant and distribution for third party financial products. PL is a subsidiary of Prabhudas Lilladher Advisory Services Pvt Ltd. which has its various subsidiaries engaged in business of commodity broking, investment banking, financial services (margin funding) and distribution of third party financial/other products, details in respect of which are available at www.plindia.com

This document has been prepared by the Research Division of PL and is meant for use by the recipient only as information and is not for circulation. This document is not to be reported or copied or made available to others without prior permission of PL. It should not be considered or taken as an offer to sell or a solicitation to buy or sell any security.

The information contained in this report has been obtained from sources that are considered to be reliable. However, PL has not independently verified the accuracy or completeness of the same. Neither PL nor any of its affiliates, its directors or its employees accepts any responsibility of whatsoever nature for the information, statements and opinion given, made available or expressed herein or for any omission therein.

Recipients of this report should be aware that past performance is not necessarily a guide to future performance and value of investments can go down as well. The suitability or otherwise of any investments will depend upon the recipient's particular circumstances and, in case of doubt, advice should be sought from an independent expert/advisor.

Either PL or its affiliates or its directors or its employees or its representatives or its clients or their relatives may have position(s), make market, act as principal or engage in transactions of securities of companies referred to in this report and they may have used the research material prior to publication.

PL may from time to time solicit or perform investment banking or other services for any company mentioned in this document.

PL is registered as Research Analyst under Securities and Exchange Board of India (Research Analysts) Regulations, 2014 PL submits that no material disciplinary action has been taken on us by any Regulatory Authority impacting Equity Research Analysis activities.

PL or its research analysts or its associates or his relatives do not have any financial interest in the subject company.

PL or its research analysts or its associates or his relatives do not have actual/beneficial ownership of one per cent or more securities of the subject company at the end of the month immediately preceding the date of publication of the research report.

PL or its research analysts or its associates or his relatives do not have any material conflict of interest at the time of publication of the research report.

PL or its associates might have received compensation from the subject company in the past twelve months.

PL or its associates might have managed or co-managed public offering of securities for the subject company in the past twelve months or mandated by the subject company for any other assignment in the past twelve months.

PL or its associates might have received any compensation for investment banking or merchant banking or brokerage services from the subject company in the past twelve months.

PL or its associates might have received any compensation for products or services other than investment banking or merchant banking or brokerage services from the subject company in the past twelve months PL or its associates might have received any compensation or other benefits from the subject company or third party in connection with the research report.

PL encourages independence in research report preparation and strives to minimize conflict in preparation of research report. PL or its analysts did not receive any compensation or other benefits from the subject Company or third party in connection with the preparation of the research report. PL or its Research Analysts do not have any material conflict of interest at the time of publication of this report.

It is confirmed that Mrs.Vaishali Parekh B.com, Research Analyst of this report has not received any compensation from the companies mentioned in the report in the preceding twelve months compensation of our Research Analysts is not based on any specific merchant banking, investment banking or brokerage service transactions.

The Research analysts for this report certifies that all of the views expressed in this report accurately reflect his or her personal views about the subject company or companies and its or their securities, and no part of his or her compensation was, is or will be, directly or indirectly related to specific recommendations or views expressed in this report.

The research analysts for this report has not served as an officer, director or employee of the subject company PL or its research analysts have not engaged in market making activity for the subject company

Our sales people, traders, and other professionals or affiliates may provide oral or written market commentary or trading strategies to our clients that reflect opinions that are contrary to the opinions expressed herein, and our proprietary trading and investing businesses may make investment decisions that are inconsistent with the recommendations expressed herein. In reviewing these materials, you should be aware that any or all of the foregoing, among other things, may give rise to real or potential conflicts of interest.

PL and its associates, their directors and employees may (a) from time to time, have a long or short position in, and buy or sell the securities of the subject company or (b) be engaged in any other transaction involving such securities and earn brokerage or other compensation or act as a market maker in the financial instruments of the subject company or act as an advisor or lender/borrower to the subject company or may have any other potential conflict of interests with respect to any recommendation and other related information and opinions.