

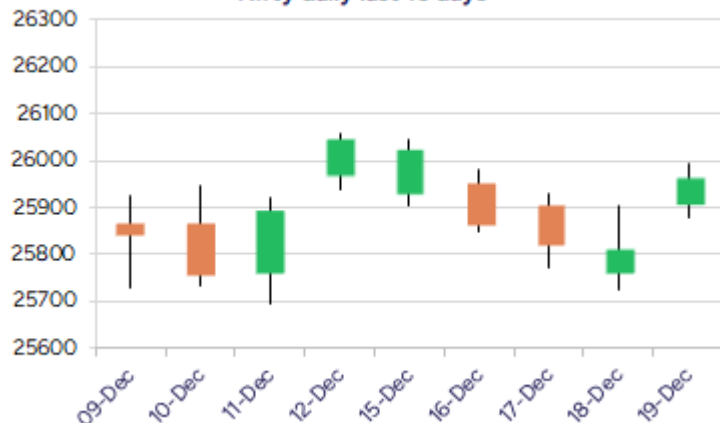
Date: 22nd December 2025

* Sensex 84929.36 + 447.55

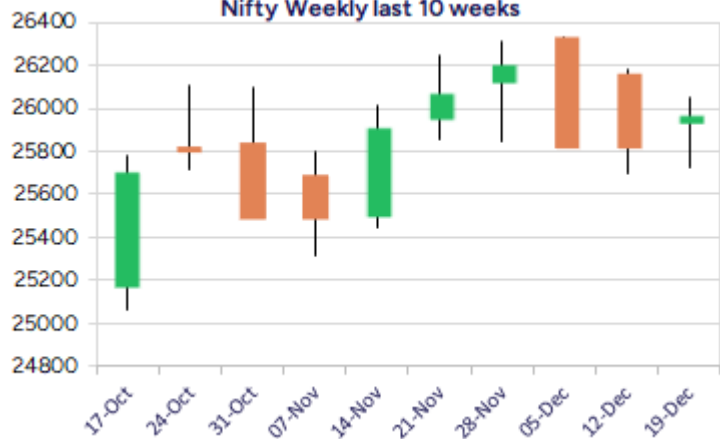
* Nifty 25966.40 + 150.85

* Bank Nifty 59069.20 + 156.35

Nifty daily last 10 days



Nifty Weekly last 10 weeks



*Blue candle → Close rate > Open rate * Red candle → Close rate < Open rate

Market Preview

Nifty extends gains; bias remains optimistic

Nifty gained further, closing above the 25,950 zone, with the broader markets also showing active participation to support the benchmark index, and can anticipate further rise in the coming days. Bank Nifty witnessed a decent positive move to close above the 59000 zone, with bias getting better, anticipating further upward move in the coming days. The market breadth was strong with the advance-decline indicating a ratio of 2:1 at close.

Market Forecast

Nifty daily range 25800-26100

Nifty continues to gain strength, sustaining above the important 50EMA level, which is positioned near the 25750 zone, maintained as the strong near-term support, and currently closing near the 25960 level has further improved bias and sentiment overall. With the broader markets supporting the benchmark index, on the upside, Nifty needs to breach above the important hurdle of the 26050-26200 zone, which shall establish further stability and conviction for further upward movement in the coming days.

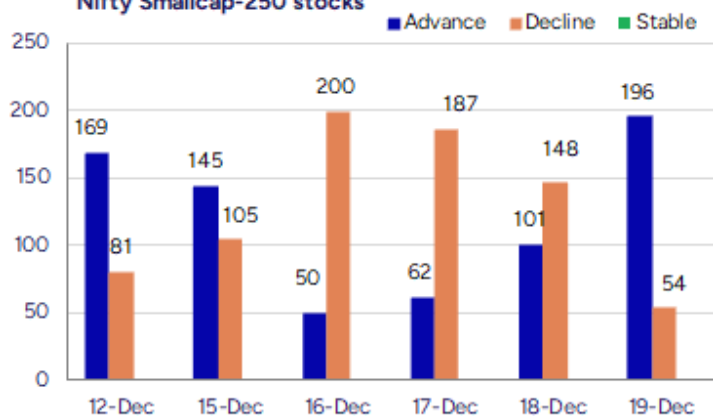
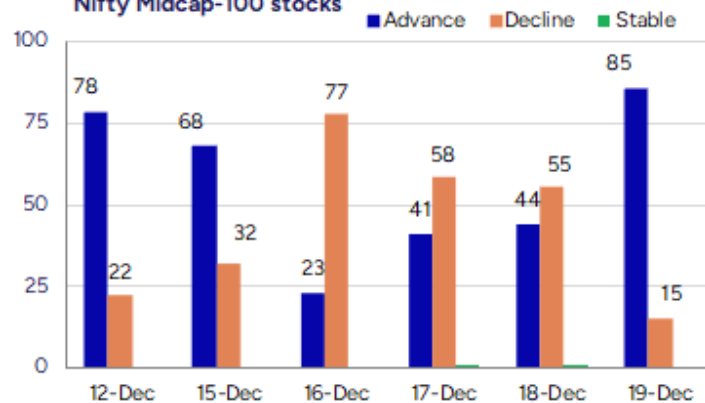
Bank Nifty witnessed a range-bound session with the 59000 zone sustained and closed in the green with a 156-point gain, indicating some hopes. The index has got the important 50EMA at the 58351 level, which would be the next near-term support zone, and, on the upside, a decisive breach above the 59500 level would improve the bias; thereafter, expect further rise.

The support for the day is seen at 25800 levels, while the resistance is seen at 26100 levels. BankNifty would have the daily range of 58500-59500 levels.

Sensex	Period	Closing	% Chng	Trend	Reversal	2 Sup	1 Sup	Pivot	1 Res	2 Res
Nifty	Daily	25966.40	0.58%	1	25912.35	25834	25900	25947	26013	26060
	Weekly	25966.40	-0.31%	-2	26103.70	25592	25779	25913	26100	26234
	Monthly	26202.95	1.87%	2	25767.20	24953	25578	25944	26569	26935
Bank Nifty	Daily	59069.20	0.27%	-4	59159.00	58793	58931	59036	59174	59279
	Weekly	59069.20	-0.54%	-1	59660.95	58285	58677	59105	59497	59925
	Monthly	59752.70	3.42%	2	58620.10	56200	57976	58935	60712	61671
Sensex	Daily	84929.36	0.60%	1	84824.85	84578	84754	84911	85086	85243
	Weekly	84929.36	-0.40%	-1	85365.10	83775	84352	84815	85393	85856
	Monthly	85706.67	2.11%	2	84235.40	81429	83568	84811	86950	88193

Gainers - Losers (Nifty 500 Stocks)

Gainers				Losers			
Company Name	Last Price	% Gain	Volume	Company Name	Last Price	% Loss	Volume
Authum Invest	2908.5	7.63%	525528	Blue Star	1,781.40	-3.95%	849944
Deepak Nitrite	1,667.00	5.34%	682564	Five-Star Busin	569.9	-3.41%	813515
Ceat	3931.7	5.03%	416888	ABSL AMC	760.70	-3.02%	347988
Devyani Int	130.86	3.77%	1258279	Balrampur Chini	437.65	-2.92%	986012
Atul	6,007.00	3.58%	138362	EID Parry	1,000.20	-2.59%	355619
Bandhan Bank	150.09	3.28%	10951172	Adani Total Gas	568.75	-2.27%	759970
BEML	1,721.40	3.27%	174790	CCL Products	969.9	-2.06%	133767

Nifty Smallcap-250 stocks

Nifty Midcap-100 stocks


Nifty Daily chart with RSI indicator



BankNifty Daily chart with RSI indicator

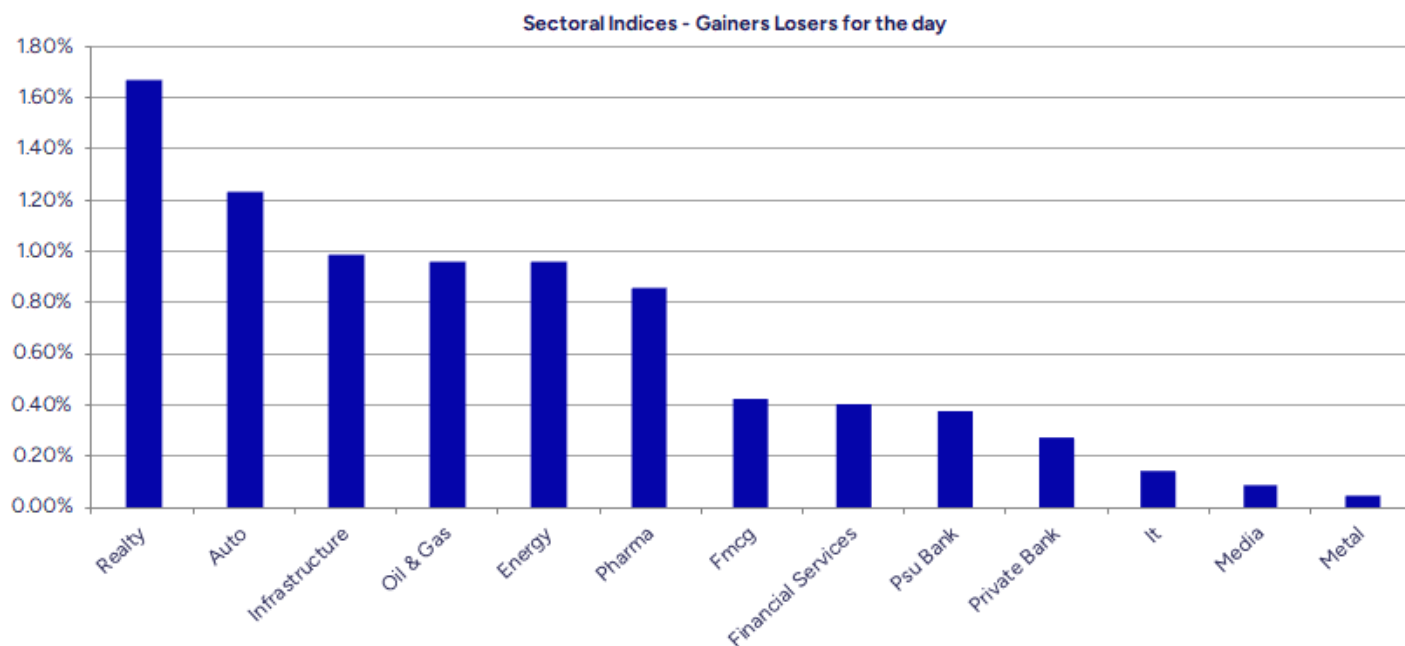


Breakouts - Cross above 200 DMA			
Company Name	LCP	Change %	200 DMA
Quest Lab	108.75	10.02	98.85
Aeroflex Ind.	195.19	8.53	179.85
ITI	320	7.04	298.94
Oriana Power	2271.3	6.86	2125.4
Sanghvi Movers	329.3	6.63	308.83
Sampann Utpadan	32.12	3.95	30.9
Quality Power	693.95	3.90	667.9
Avantel	153.58	3.71	148.08
Hindprakash Ind	136.84	3.13	132.69
Crest Ventures	391.3	3.02	379.82
Mangalam Cement	776.95	3.01	754.26
Barak Vally Cem	43.8	2.91	42.56
Graphite India	543.8	2.88	528.57
Jubilant Pharmo	1087.1	2.44	1061.16
Ken Enterprises	45.75	2.37	44.69
Interiors & Mor	250	2.28	244.43
Indbank Merchan	35.15	2.21	34.39
Laxmi Goldorna	289.35	2.19	283.16

* Stocks crossing above its Simple Moving Average (200DMA)

Breakdown - Cross below 200 DMA			
Company Name	LCP	Change %	200 DMA
Ugar Sugar Work	41.43	-7.54	44.81
Blue Star	1766.7	-3.60	1832.73
Andhra Cement	67.45	-2.99	69.53
Mangalam Alloys	48.55	-2.35	49.72
Amrutanjan Heal	683.25	-1.51	693.76
Envirotech Sys	126	-1.35	127.73
Xtglobal	35.62	-0.84	35.92
Uttam Sugar	262.98	-0.58	264.51
SAIL	125.91	-0.43	126.45
Spandana Sphoor	264.4	-0.35	265.34
Veedol Corp	1643	-0.23	1646.76
Expleo Solution	1029.4	-0.15	1030.94

* Stocks crossing below its Simple Moving Average (200DMA)



Stocks witnessing a volume surge as compared to their 5 day average volume

Watch out for the stocks that have seen a huge spurt in its share price over the last three days

Volume Shockers - NSE					
Company name	LCP	% Chg	Volume	Avg Vol *	% Chg
Powergrid	89.1	-4	97970433	109426	89431
Cantabil Retail	256.7	-0.68	412378	2367	17322
ITI	313.4	6.24	2100000	14284	14602
RDB Infra	53.44	8	922629	16235	5583
Precision Camsh	168.05	12.52	206460	3911	5179
PDS	383.05	10.4	126789	2482	5008
Coromandel Engg	87.7	4.99	337568	6925	4775
Mangalam Cement	776	2.85	37718	1013	3624
Lenskart Solu	467.5	14.09	1739796	49323	3427
Supreme Petro	622	-2.46	29017	1071	2610
Aeroflex Ind.	191.1	7.94	2098235	96514	2074
Emcure Pharmace	1383.4	-0.22	205354	9643	2030
Tata Elxsi	5412.3	7.94	101583	4825	2006
Oceanic Foods	73	12.1	31711	1739	1724
GPT Infra	107.9	0.79	471228	26378	1686
Bharat Wire Rop	175.5	0.89	85941	4889	1658
Rallis India	265.1	-0.19	303201	19284	1472
Madhuvveer Com	210.95	-0.26	175241	11305	1450
BLS Internation	323.05	2.07	875222	58651	1392
Astral Ltd	1420.2	0.79	127864	9351	1267
Visaka Ind	66.22	2.99	37777	2835	1233

Price Shockers - NSE				
Company name	LCP	Prv Close	% Chg	Volume
GEM Enviro Mana	63.03	47	34.11	280800
Sonal Mercant	138.59	104.37	32.79	17247
Lykis	49	37.66	30.11	500145
Relicab Cable M	53.5	42.68	25.35	14127
NDA Securities	36.14	29	24.62	13962
Meesho	224.5	180.3	24.51	14167647
Mahamaya Life	196	160.5	22.12	272400
Bliss GVS	173.05	143.65	20.47	1282698
Roto Pumps	75	62.32	20.35	5093045
Parshva Enterpr	207.95	172.9	20.27	5348
Antony Waste	511	431.75	18.36	372839
Walchandnagar	196.45	167.05	17.6	2702023
Gyan Developers	44.7	38.16	17.14	5956
RDB Infra	53.44	45.63	17.12	922629
Ecoboard Inds	53.49	45.78	16.84	42957
Dynavision	221	190	16.32	11731
SEL Mgf Company	38	32.7	16.21	26310
Welspun Special	40.56	35.01	15.85	1283583
IMEC Services	261.6	226	15.75	1128
Lakhotia Poly	69.45	60	15.75	285
Soma Papers	122.96	106.23	15.75	1226

Nifty 50 stocks - Summary Details											
Symbol	LTP	Chng	% Chng	Volume (lacs)	Turnover (crs.)	52w High	Diff with 52w H	52w Low	Diff with 52w L	30 days % chng	365 days % chng
NIFTY 50	25966.40	150.85	0.58%	3829.27	36600.32	26325.80	1.37%	21743.65	19.42%	-0.76%	6.08%
ADANIENT	2243.90	14.60	0.65%	8.80	196.31	2616.50	14.24%	1967.52	14.05%	-9.45%	-10.38%
ADANIPTS	1497.00	1.30	0.09%	12.76	190.92	1549.00	3.36%	1010.75	48.11%	-0.79%	21.41%
APOLLOHOSP	7022.00	103.50	1.50%	2.36	164.70	8099.50	13.30%	6001.00	17.01%	-7.60%	-4.16%
ASIANPAINT	2788.30	28.60	1.04%	38.96	1089.72	2985.70	6.61%	2124.75	31.23%	-4.44%	17.13%
AXISBANK	1231.40	1.60	0.13%	50.55	623.19	1304.00	5.57%	933.50	31.91%	-1.58%	8.23%
BAJAJ-AUTO	9000.00	169.00	1.91%	2.15	192.87	9490.00	5.16%	7089.35	26.95%	-1.28%	-0.72%
BAJAJFINSV	2044.10	17.80	0.88%	11.05	225.71	2195.00	6.87%	1551.65	31.74%	-2.56%	23.32%
BAJFINANCE	1006.20	5.90	0.59%	51.26	516.51	1102.50	8.73%	679.20	48.14%	-2.58%	-86.02%
BEL	393.00	9.55	2.49%	115.95	453.22	436.00	9.86%	240.25	63.58%	-9.68%	23.45%
BHARTIARTL	2090.90	-1.10	-0.05%	101.27	2121.98	2174.50	3.84%	1559.50	34.08%	-0.96%	29.51%
CIPLA	1515.00	16.10	1.07%	7.69	116.32	1673.00	9.44%	1335.00	13.48%	-2.39%	3.31%
COALINDIA	385.00	-0.30	-0.08%	36.12	139.13	417.25	7.73%	349.25	10.24%	-0.66%	-4.37%
DRREDDY	1280.10	0.10	0.01%	12.09	154.83	1405.90	8.95%	1020.00	25.50%	2.86%	2.59%
EICHERMOT	7229.50	123.00	1.73%	4.23	304.82	7328.50	1.35%	4646.00	55.61%	4.52%	49.84%
ETERNAL	286.25	1.50	0.53%	177.84	509.63	368.45	22.31%	194.80	46.95%	-8.01%	#VALUE!
GRASIM	2815.50	7.90	0.28%	5.47	153.89	2977.80	5.45%	2276.95	23.65%	0.62%	8.00%
HCLTECH	1641.80	-19.60	-1.18%	34.87	573.58	2012.20	18.41%	1302.75	26.03%	3.42%	-14.83%
HDFCBANK	985.20	5.50	0.56%	259.52	2556.05	1020.50	3.46%	812.15	21.31%	-1.69%	-46.56%
HDFCLIFE	766.30	9.30	1.23%	30.98	236.82	820.75	6.63%	584.30	31.15%	-1.72%	20.78%
HINDALCO	853.75	-2.95	-0.34%	49.39	421.58	864.40	1.23%	546.45	56.24%	6.14%	33.97%
HINDUNILVR	2281.00	15.50	0.68%	12.37	281.91	2750.00	17.05%	2136.00	6.79%	-6.58%	-4.14%
ICICIBANK	1354.30	-2.50	-0.18%	143.19	1939.01	1500.00	9.71%	1186.00	14.19%	-1.61%	1.73%
INDIGO	5113.00	-2.50	-0.05%	90.88	4679.74	6232.50	17.96%	3945.00	29.61%	-12.90%	16.61%
INFY	1638.00	11.20	0.69%	131.49	2156.45	1984.95	17.48%	1307.00	25.33%	7.91%	-17.70%
ITC	400.90	0.50	0.12%	106.55	427.67	491.00	18.35%	390.15	2.76%	-1.65%	-14.73%
JIOFIN	297.15	4.85	1.66%	87.67	259.79	338.60	12.24%	198.65	49.58%	-6.31%	-13.29%
JSWSTEEL	1080.00	-2.20	-0.20%	10.68	115.44	1223.90	11.76%	880.00	22.73%	-7.94%	11.93%
KOTAKBANK	2159.60	-5.00	-0.23%	23.01	498.00	2301.90	6.18%	1723.75	25.28%	2.93%	21.33%
LT	4075.00	43.90	1.09%	13.28	541.41	4140.00	1.57%	2965.30	37.42%	0.08%	5.88%
M&M	3605.00	18.40	0.51%	16.48	592.89	3795.00	5.01%	2425.00	48.66%	-3.97%	17.92%
MARUTI	16405.00	76.00	0.47%	3.60	591.18	16660.00	1.53%	10725.00	52.96%	2.84%	46.99%
MAXHEALTH	1076.00	27.50	2.62%	32.86	352.30	1314.30	18.13%	940.05	14.46%	-6.52%	-13.26%
NESTLEIND	1243.00	9.50	0.77%	7.54	93.74	1311.60	5.23%	1055.00	17.82%	-2.90%	-44.01%
NTPC	320.05	1.55	0.49%	108.34	345.56	371.45	13.84%	292.80	9.31%	-3.54%	-8.75%
ONGC	232.90	0.90	0.39%	50.71	117.99	273.50	14.84%	205.00	13.61%	-6.47%	-6.22%
POWERGRID	263.25	5.30	2.05%	166.58	436.24	329.10	20.01%	247.30	6.45%	-5.70%	-21.79%
RELIANCE	1564.90	20.50	1.33%	139.37	2183.40	1581.30	1.04%	1114.85	40.37%	1.72%	24.02%
SBILIFE	2026.00	11.60	0.58%	7.52	152.36	2086.60	2.90%	1372.55	47.61%	0.92%	42.90%
SBIN	980.00	2.45	0.25%	53.77	526.85	999.00	1.90%	680.00	44.12%	0.43%	14.93%
SHRIRAMFIN	905.10	35.65	4.10%	352.97	3142.66	913.50	0.92%	493.35	83.46%	6.30%	-70.79%
SUNPHARMA	1745.50	-0.40	-0.02%	27.69	483.67	1910.00	8.61%	1548.00	12.76%	-1.02%	-2.41%
TATACONSUM	1182.50	11.00	0.94%	5.98	70.61	1202.80	1.69%	882.90	33.93%	-0.63%	29.46%
TMPV	354.20	8.40	2.43%	740.53	2609.99	810.00	56.27%	337.70	4.89%	-7.22%	#VALUE!
TATASTEEL	168.80	0.68	0.40%	284.49	479.62	186.94	9.70%	122.62	37.66%	-2.92%	15.40%
TCS	3285.00	4.20	0.13%	39.03	1285.88	4382.00	25.03%	2866.60	14.60%	5.76%	-24.20%
TECHM	1609.00	3.40	0.21%	18.03	290.04	1787.95	10.01%	1209.40	33.04%	10.52%	-9.33%
TITAN	3933.50	14.20	0.36%	7.31	287.77	3961.90	0.72%	2925.00	34.48%	1.31%	15.07%
TRENT	4063.90	33.90	0.84%	5.01	203.12	7493.05	45.76%	3930.10	3.40%	-8.50%	-41.94%
ULTRACEMCO	11497.00	36.00	0.31%	1.53	175.86	13097.00	12.22%	10047.85	14.42%	-2.69%	-2.67%
WIPRO	264.17	0.32	0.12%	127.51	337.41	324.60	18.62%	228.00	15.86%	8.11%	-14.57%

Disclaimer / Disclosures

ANALYST CERTIFICATION

I, Mrs. Vaishali Parekh B.com, Research Analyst, author and the name subscribed to this report, hereby certify that all of the views expressed in this research report accurately reflect our views about the subject issuer(s) or securities. We also certify that no part of our compensation was, is, or will be directly or indirectly related to the specific recommendation(s) or view(s) in this report.

Terms & conditions and other disclosures:

Prabhudas Lilladher Pvt. Ltd, Mumbai, India (hereinafter referred to as "PL") is engaged in the business of Stock Broking, Portfolio Manager, Depository Participant and distribution for third party financial products. PL is a subsidiary of Prabhudas Lilladher Advisory Services Pvt Ltd. which has its various subsidiaries engaged in business of commodity broking, investment banking, financial services (margin funding) and distribution of third party financial/other products, details in respect of which are available at www.plindia.com

This document has been prepared by the Research Division of PL and is meant for use by the recipient only as information and is not for circulation. This document is not to be reported or copied or made available to others without prior permission of PL. It should not be considered or taken as an offer to sell or a solicitation to buy or sell any security.

The information contained in this report has been obtained from sources that are considered to be reliable. However, PL has not independently verified the accuracy or completeness of the same. Neither PL nor any of its affiliates, its directors or its employees accepts any responsibility of whatsoever nature for the information, statements and opinion given, made available or expressed herein or for any omission therein.

Recipients of this report should be aware that past performance is not necessarily a guide to future performance and value of investments can go down as well. The suitability or otherwise of any investments will depend upon the recipient's particular circumstances and, in case of doubt, advice should be sought from an independent expert/advisor.

Either PL or its affiliates or its directors or its employees or its representatives or its clients or their relatives may have position(s), make market, act as principal or engage in transactions of securities of companies referred to in this report and they may have used the research material prior to publication.

PL may from time to time solicit or perform investment banking or other services for any company mentioned in this document.

PL is registered as Research Analyst under Securities and Exchange Board of India (Research Analysts) Regulations, 2014 PL submits that no material disciplinary action has been taken on us by any Regulatory Authority impacting Equity Research Analysis activities.

PL or its research analysts or its associates or his relatives do not have any financial interest in the subject company.

PL or its research analysts or its associates or his relatives do not have actual/beneficial ownership of one per cent or more securities of the subject company at the end of the month immediately preceding the date of publication of the research report.

PL or its research analysts or its associates or his relatives do not have any material conflict of interest at the time of publication of the research report.

PL or its associates might have received compensation from the subject company in the past twelve months.

PL or its associates might have managed or co-managed public offering of securities for the subject company in the past twelve months or mandated by the subject company for any other assignment in the past twelve months.

PL or its associates might have received any compensation for investment banking or merchant banking or brokerage services from the subject company in the past twelve months.

PL or its associates might have received any compensation for products or services other than investment banking or merchant banking or brokerage services from the subject company in the past twelve months PL or its associates might have received any compensation or other benefits from the subject company or third party in connection with the research report.

PL encourages independence in research report preparation and strives to minimize conflict in preparation of research report. PL or its analysts did not receive any compensation or other benefits from the subject Company or third party in connection with the preparation of the research report. PL or its Research Analysts do not have any material conflict of interest at the time of publication of this report.

It is confirmed that Mrs.Vaishali Parekh B.com, Research Analyst of this report has not received any compensation from the companies mentioned in the report in the preceding twelve months compensation of our Research Analysts is not based on any specific merchant banking, investment banking or brokerage service transactions.

The Research analysts for this report certifies that all of the views expressed in this report accurately reflect his or her personal views about the subject company or companies and its or their securities, and no part of his or her compensation was, is or will be, directly or indirectly related to specific recommendations or views expressed in this report.

The research analysts for this report has not served as an officer, director or employee of the subject company PL or its research analysts have not engaged in market making activity for the subject company

Our sales people, traders, and other professionals or affiliates may provide oral or written market commentary or trading strategies to our clients that reflect opinions that are contrary to the opinions expressed herein, and our proprietary trading and investing businesses may make investment decisions that are inconsistent with the recommendations expressed herein. In reviewing these materials, you should be aware that any or all of the foregoing, among other things, may give rise to real or potential conflicts of interest.

PL and its associates, their directors and employees may (a) from time to time, have a long or short position in, and buy or sell the securities of the subject company or (b) be engaged in any other transaction involving such securities and earn brokerage or other compensation or act as a market maker in the financial instruments of the subject company or act as an advisor or lender/borrower to the subject company or may have any other potential conflict of interests with respect to any recommendation and other related information and opinions.