

Date: 23<sup>rd</sup> December 2025

\* Sensex 85567.48 + 638.12

\* Nifty 26172.40 + 206.00

\* Bank Nifty 59304.00 + 234.80

## Market Preview

### Nifty surges ahead; undertone getting stronger

Nifty continued with the positive move with an optimistic gap up opening and surged ahead with overall sentiment getting better and closed on a strong note near 26170 zone anticipating for further rise. BankNifty also gained to some extent improving the overall bias closing in the green near 59300 level and can expect for further upward move. The market breadth was strong with the advance decline indicating a ratio of almost 3:1 at close.

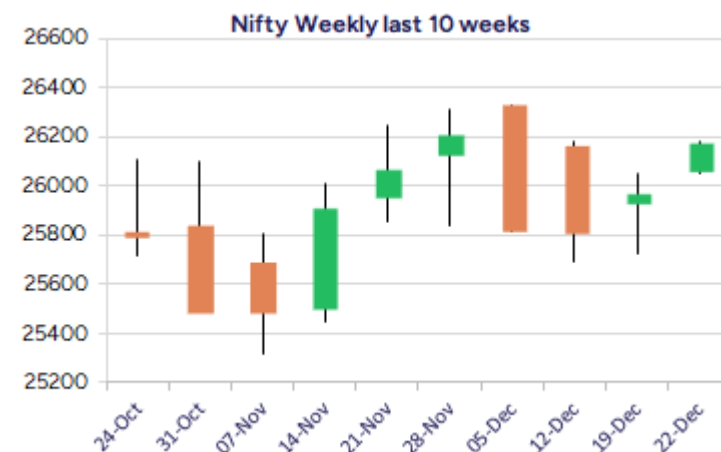
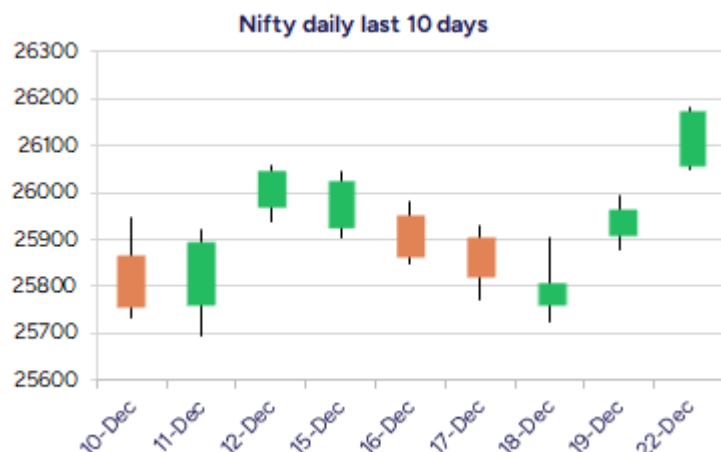
## Market Forecast

### Nifty daily range 26050-26350

Nifty surged ahead with a strong gap up opening above the 26000 zone and extended the gains as the day progressed ahead with a gradual rise with bias and sentiment getting better with overall participation witnessed from the broader markets as well to anticipate for further upward move in the coming days. The index has sustained the strong support near the 50EMA level at 25750 zone and with a strong pullback indication has higher near-term target of 26450 level with the undertone maintained strong as of now.

BankNifty extended the gains from the previous session closing near the 59300 zone with bias improving and can expect for further rise in the coming days once a decisive breach above the 60000 zone is confirmed to establish conviction. With the trend maintained positive and sentiment overall improving, we can anticipate for further upward move having targets of 61300 and 62700 levels in the coming days with major support positioned near the 50EMA level at 58500 zone.

The support for the day is seen at 26050 levels, while the resistance is seen at 26350 levels. BankNifty would have the daily range of 59000-59800 levels.



\*Blue candle → Close rate > Open rate \* Red candle → Close rate < Open rate

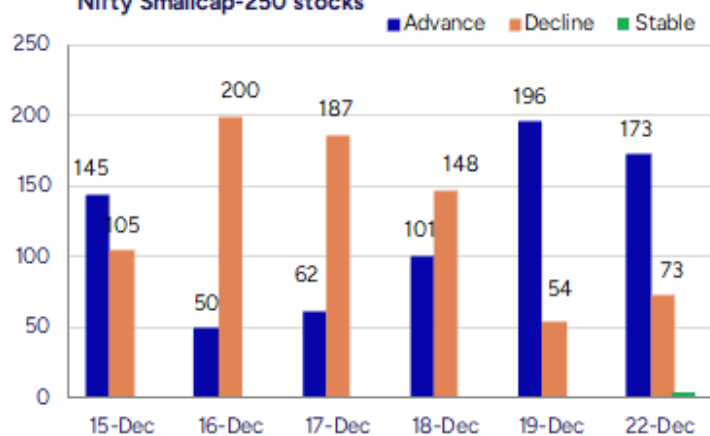
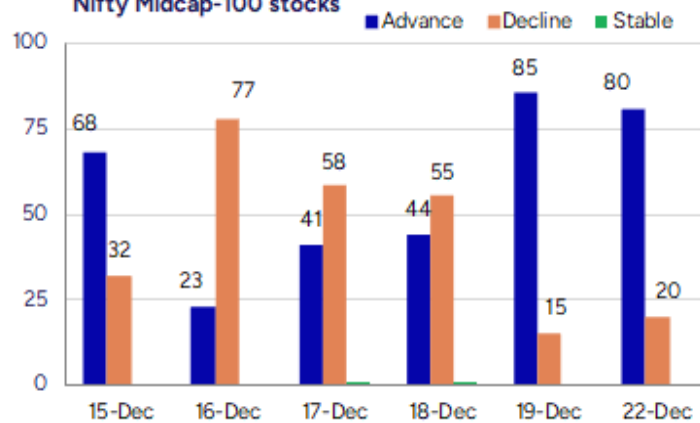
| Sensex     | Period  | Closing  | % Chng | Trend | Reversal | 2 Sup | 1 Sup | Pivot | 1 Res | 2 Res |
|------------|---------|----------|--------|-------|----------|-------|-------|-------|-------|-------|
| Nifty      | Daily   | 26172.40 | 0.79%  | 2     | 25972.25 | 26001 | 26087 | 26134 | 26219 | 26267 |
|            | Weekly  | 25966.40 | -0.31% | -2    | 26103.70 | 25592 | 25779 | 25913 | 26100 | 26234 |
|            | Monthly | 26202.95 | 1.87%  | 2     | 25767.20 | 24953 | 25578 | 25944 | 26569 | 26935 |
| Bank Nifty | Daily   | 59304.00 | 0.40%  | 1     | 59186.20 | 59061 | 59183 | 59277 | 59398 | 59493 |
|            | Weekly  | 59069.20 | -0.54% | -1    | 59660.95 | 58285 | 58677 | 59105 | 59497 | 59925 |
|            | Monthly | 59752.70 | 3.42%  | 2     | 58620.10 | 56200 | 57976 | 58935 | 60712 | 61671 |
| Sensex     | Daily   | 85567.48 | 0.75%  | 2     | 84998.30 | 84983 | 85275 | 85438 | 85731 | 85894 |
|            | Weekly  | 84929.36 | -0.40% | -1    | 85365.10 | 83775 | 84352 | 84815 | 85393 | 85856 |
|            | Monthly | 85706.67 | 2.11%  | 2     | 84235.40 | 81429 | 83568 | 84811 | 86950 | 88193 |

**Gainers - Losers ( Nifty 500 Stocks )**
**Gainers**

| Company Name    | Last Price | % Gain | Volume  |
|-----------------|------------|--------|---------|
| Cochin Shipyard | 1666.3     | 7.62%  | 3641165 |
| Devyani Int     | 139.27     | 6.43%  | 6704756 |
| Chambal Fert    | 465.95     | 4.63%  | 1812394 |
| BEML            | 1,795.80   | 4.32%  | 508382  |
| Birlasoft       | 450.15     | 3.85%  | 3646820 |
| EID Parry       | 1,038.60   | 3.84%  | 237141  |
| Akums Drugs P   | 443.15     | 3.73%  | 311567  |

**Losers**

| Company Name    | Last Price | % Loss | Volume  |
|-----------------|------------|--------|---------|
| Chola Invest.   | 1,584.90   | -3.83% | 5777553 |
| Dixon Technolog | 12845      | -3.19% | 508363  |
| Endurance Techn | 2,656.70   | -1.45% | 89195   |
| Capri Global    | 177.77     | -1.41% | 890784  |
| Brainbees Solu  | 292.75     | -1.33% | 1027147 |
| AWL Agri        | 241.7      | -1.29% | 1769463 |
| CRISIL          | 4322.1     | -1.28% | 42514   |

**Nifty Smallcap-250 stocks**

**Nifty Midcap-100 stocks**


## Nifty Daily chart with RSI indicator



## BankNifty Daily chart with RSI indicator



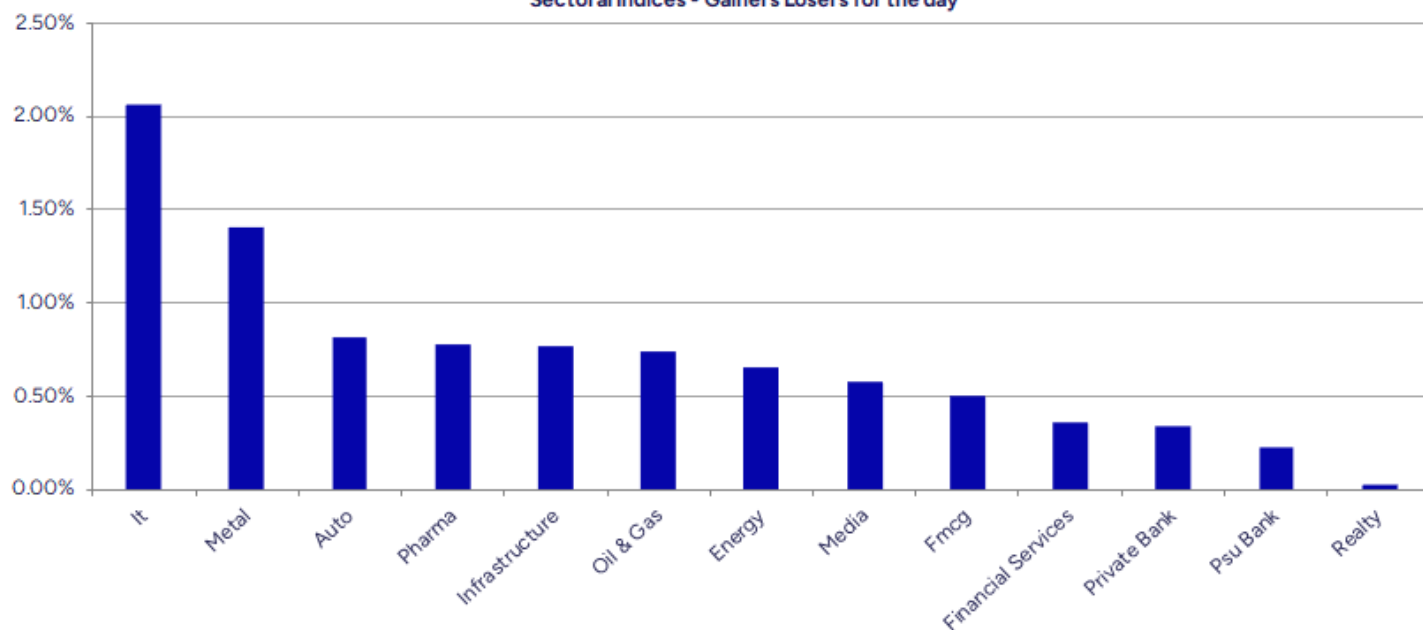
| Breakouts - Cross above 200 DMA |        |          |         |
|---------------------------------|--------|----------|---------|
| Company Name                    | LCP    | Change % | 200 DMA |
| Kaya                            | 395.75 | 7.92     | 366.72  |
| Kross                           | 192.9  | 6.05     | 181.89  |
| Ajmera Realty                   | 973.3  | 5.70     | 920.81  |
| Sterlite Techno                 | 106.75 | 5.48     | 101.2   |
| Ideaforge Tech                  | 495.35 | 4.66     | 473.31  |
| Centum Electron                 | 2325.7 | 4.22     | 2231.47 |
| Magson Retail                   | 118.9  | 3.15     | 115.27  |
| Archidply Decor                 | 87.99  | 3.00     | 85.43   |
| SAIL                            | 130.28 | 2.95     | 126.55  |
| Premier Explo                   | 527.8  | 2.94     | 512.71  |
| Vishnusurya Pro                 | 178.5  | 2.91     | 173.46  |
| Viviana Power                   | 759.8  | 2.82     | 738.93  |
| Sky Gold                        | 332.6  | 2.52     | 324.44  |
| Dishman Carboge                 | 253.93 | 2.30     | 248.22  |
| Raj Oil Mills                   | 50.65  | 2.22     | 49.55   |
| Equitas Bank                    | 61.65  | 2.20     | 60.32   |
| Tainwala Chem                   | 216.7  | 2.18     | 212.08  |
| Veedol Corp                     | 1682   | 2.09     | 1647.59 |

\* Stocks crossing above its Simple Moving Average (200DMA)

| Breakdown - Cross below 200 DMA |        |          |         |
|---------------------------------|--------|----------|---------|
| Company Name                    | LCP    | Change % | 200 DMA |
| United Polyfab                  | 26.68  | -4.54    | 27.95   |
| Responsive Ind                  | 196.55 | -2.38    | 201.35  |
| Kanpur Plast                    | 186.04 | -1.23    | 188.36  |
| Viaz Tyres                      | 67.45  | -1.13    | 68.22   |
| Nagreeka Cap                    | 27.55  | -0.90    | 27.8    |
| Astral Ltd                      | 1407.3 | -0.78    | 1418.3  |
| Gloster                         | 636.55 | -0.70    | 641.02  |
| Hexaware Tech                   | 750.05 | -0.46    | 753.55  |
| Divgi Torqtrans                 | 582.1  | -0.37    | 584.25  |
| PDS                             | 375.95 | -0.33    | 377.18  |
| The Grob Tea                    | 1014   | -0.29    | 1017    |
| Voltamp Trans                   | 7933.5 | -0.24    | 7952.56 |
| Cipla                           | 1512.3 | -0.08    | 1513.56 |
| Surana Telecom                  | 20     | -0.05    | 20.01   |
| Vaibhav Global                  | 234.66 | -0.04    | 234.75  |
| Mold Tek Tech                   | 158.36 | -0.02    | 158.39  |
| Capri Global                    | 178.26 | -0.01    | 178.28  |
| Rajputana Bio                   | 244.6  | 0.00     | 244.61  |

\* Stocks crossing below its Simple Moving Average (200DMA)

Sectoral Indices - Gainers Losers for the day



Stocks witnessing a volume surge as compared to their 5 day average volume

Watch out for the stocks that have seen a huge spurt in its share price over the last three days

| Volume Shockers - NSE |        |       |          |           |       |
|-----------------------|--------|-------|----------|-----------|-------|
| Company name          | LCP    | % Chg | Volume   | Avg Vol * | % Chg |
| Shoppers Stop         | 433    | -4.09 | 404298   | 1331      | 30285 |
| Rajesh Exports        | 226    | 10.81 | 4214449  | 38306     | 10902 |
| CHEMPLAST SANMA       | 263.8  | 6.35  | 352826   | 3720      | 9385  |
| Jupiter Wagons        | 312.1  | 19.99 | 6733880  | 86408     | 7693  |
| NIIT                  | 98.24  | 13.24 | 1548082  | 20521     | 7444  |
| Happy Forgings        | 1080   | 0.27  | 78085    | 1121      | 6867  |
| Welspun Special       | 38.12  | -6.02 | 29025380 | 430501    | 6642  |
| Kirloskar Pneum       | 1040.1 | 0.17  | 180465   | 2902      | 6118  |
| NDA Securities        | 40     | 10.68 | 295014   | 6564      | 4394  |
| JNK India             | 227.8  | 3.52  | 73185    | 1670      | 4282  |
| Ideaforge Tech        | 486    | 14.43 | 1040209  | 24747     | 4103  |
| AAYUSH WELLNESS       | 49.94  | 4.98  | 467991   | 14971     | 3026  |
| Restaurant Bran       | 64.83  | -2.53 | 3307384  | 116107    | 2749  |
| Barak Vally Cem       | 45.4   | 2.18  | 87340    | 3114      | 2705  |
| Britannia             | 6085   | -0.29 | 168877   | 6232      | 2610  |
| Healthcare Glob       | 693    | -1.75 | 106311   | 4129      | 2475  |
| Taj GVK Hotels        | 406.9  | 7.14  | 88618    | 3553      | 2394  |
| Krishna Institu       | 640.1  | 0.08  | 96345    | 4103      | 2248  |
| Balaji Telefilm       | 108.8  | 5.53  | 108125   | 4774      | 2165  |
| Premier Polyfil       | 40.4   | -0.52 | 89927    | 4038      | 2127  |
| Krypton               | 44.55  | 17.98 | 56350    | 2609      | 2060  |

| Price Shockers - NSE |        |           |       |         |
|----------------------|--------|-----------|-------|---------|
| Company name         | LCP    | Prv Close | % Chg | Volume  |
| NDA Securities       | 40     | 25.1      | 59.36 | 295014  |
| DH India             | 167.2  | 123.85    | 35    | 32613   |
| Relicab Cable M      | 55.2   | 42.11     | 31.09 | 18119   |
| Ecoboard Inds        | 55.66  | 45.24     | 23.03 | 39836   |
| Manaksia Steels      | 70.2   | 57.45     | 22.19 | 19085   |
| Spenta Intl          | 108    | 89.04     | 21.29 | 20732   |
| Kaya                 | 403    | 332.3     | 21.28 | 16250   |
| Jupiter Wagons       | 312.1  | 257.8     | 21.06 | 6733880 |
| Bliss GVS            | 174.8  | 144.75    | 20.76 | 254205  |
| PH CAPITAL           | 236.15 | 196       | 20.48 | 10854   |
| Krypton              | 44.55  | 37        | 20.41 | 56350   |
| RDB Infra            | 54.76  | 45.68     | 19.88 | 2952952 |
| SEL Mgf Company      | 38.96  | 32.55     | 19.69 | 9297    |
| Ceinsys Tech         | 966.75 | 835.2     | 15.75 | 79970   |
| Coromandel Engg      | 92.08  | 79.56     | 15.74 | 74574   |
| AAYUSH WELLNESS      | 49.94  | 43.16     | 15.71 | 467991  |
| Apis India           | 61.6   | 53.3      | 15.57 | 275444  |
| Rajesh Exports       | 226    | 195.6     | 15.54 | 4214449 |
| LLOYDS ENTER         | 73.35  | 63.57     | 15.38 | 348462  |
| Ashika Credit        | 357.55 | 309.95    | 15.36 | 107612  |
| Kross                | 197.5  | 172.15    | 14.73 | 126938  |

| Nifty 50 stocks - Summary Details |          |        |        |               |                 |          |                 |          |                 |                |                 |
|-----------------------------------|----------|--------|--------|---------------|-----------------|----------|-----------------|----------|-----------------|----------------|-----------------|
| Symbol                            | LTP      | Chng   | % Chng | Volume (lacs) | Turnover (crs.) | 52w High | Diff with 52w H | 52w Low  | Diff with 52w L | 30 days % chng | 365 days % chng |
| NIFTY 50                          | 26172.40 | 206.00 | 0.79%  | 2529.85       | 25332.71        | 26325.80 | 0.58%           | 21743.65 | 20.37%          | 0.22%          | 7.30%           |
| ADANIENT                          | 2261.00  | 22.00  | 0.98%  | 5.99          | 135.56          | 2616.50  | 13.59%          | 1967.52  | 14.92%          | -8.12%         | -8.89%          |
| ADANIPTS                          | 1507.50  | 11.10  | 0.74%  | 11.17         | 168.39          | 1549.00  | 2.68%           | 1010.75  | 49.15%          | 0.09%          | 23.66%          |
| APOLLOHOSP                        | 7059.00  | 46.50  | 0.66%  | 3.59          | 253.51          | 8099.50  | 12.85%          | 6001.00  | 17.63%          | -5.05%         | -3.11%          |
| ASIANPAINT                        | 2801.90  | 2.00   | 0.07%  | 4.64          | 130.10          | 2985.70  | 6.16%           | 2124.75  | 31.87%          | -3.65%         | 19.38%          |
| AXISBANK                          | 1233.80  | 3.20   | 0.26%  | 24.06         | 296.13          | 1304.00  | 5.38%           | 933.50   | 32.17%          | -2.75%         | 9.65%           |
| BAJAJ-AUTO                        | 9153.50  | 151.50 | 1.68%  | 3.77          | 345.01          | 9490.00  | 3.55%           | 7089.35  | 29.12%          | 0.91%          | 0.51%           |
| BAJAJFINSV                        | 2051.00  | 7.20   | 0.35%  | 10.39         | 212.75          | 2195.00  | 6.56%           | 1551.65  | 32.18%          | -0.31%         | 25.33%          |
| BAJFINANCE                        | 1007.80  | -0.50  | -0.05% | 39.21         | 395.65          | 1102.50  | 8.59%           | 679.20   | 48.38%          | -0.52%         | -85.75%         |
| BEL                               | 398.80   | 5.95   | 1.51%  | 93.21         | 369.87          | 436.00   | 8.53%           | 240.25   | 65.99%          | -6.66%         | 29.31%          |
| BHARTIARTL                        | 2141.50  | 43.80  | 2.09%  | 76.71         | 1639.66         | 2174.50  | 1.52%           | 1559.50  | 37.32%          | -2.40%         | 30.95%          |
| CIPLA                             | 1510.20  | -6.90  | -0.45% | 7.57          | 114.74          | 1673.00  | 9.73%           | 1335.00  | 13.12%          | 0.17%          | 3.04%           |
| COALINDIA                         | 386.90   | 1.30   | 0.34%  | 31.12         | 120.04          | 417.25   | 7.27%           | 349.25   | 10.78%          | 0.43%          | -2.58%          |
| DRREDDY                           | 1282.70  | 4.50   | 0.35%  | 6.14          | 78.71           | 1405.90  | 8.76%           | 1020.00  | 25.75%          | 2.77%          | 0.22%           |
| EICHERMOT                         | 7306.50  | 89.50  | 1.24%  | 2.34          | 170.00          | 7328.50  | 0.30%           | 4646.00  | 57.26%          | 5.91%          | 51.94%          |
| ETERNAL                           | 287.05   | 1.00   | 0.35%  | 149.86        | 429.25          | 368.45   | 22.09%          | 194.80   | 47.36%          | -6.57%         | #VALUE!         |
| GRASIM                            | 2802.10  | -10.40 | -0.37% | 7.96          | 224.35          | 2977.80  | 5.90%           | 2276.95  | 23.06%          | 1.83%          | 8.42%           |
| HCLTECH                           | 1665.00  | 22.60  | 1.38%  | 13.40         | 223.13          | 2012.20  | 17.25%          | 1302.75  | 27.81%          | 2.96%          | -16.22%         |
| HDFCBANK                          | 987.20   | 1.70   | 0.17%  | 135.40        | 1337.27         | 1020.50  | 3.26%           | 812.15   | 21.55%          | -0.70%         | -45.57%         |
| HDFCLIFE                          | 761.00   | -5.45  | -0.71% | 7.68          | 58.58           | 820.75   | 7.28%           | 584.30   | 30.24%          | 0.61%          | 22.72%          |
| HINDALCO                          | 863.60   | 11.60  | 1.36%  | 48.65         | 421.81          | 872.35   | 1.00%           | 546.45   | 58.04%          | 6.88%          | 34.60%          |
| HINDUNILVR                        | 2285.20  | 5.20   | 0.23%  | 7.91          | 181.01          | 2750.00  | 16.90%          | 2136.00  | 6.99%           | -5.16%         | -3.36%          |
| ICICIBANK                         | 1367.50  | 13.40  | 0.99%  | 93.75         | 1280.33         | 1500.00  | 8.83%           | 1186.00  | 15.30%          | -1.41%         | 3.04%           |
| INDIGO                            | 5143.50  | -10.00 | -0.19% | 15.14         | 780.10          | 6232.50  | 17.47%          | 3945.00  | 30.38%          | -10.21%        | 17.38%          |
| INFY                              | 1686.00  | 47.30  | 2.89%  | 230.98        | 3887.11         | 1982.80  | 14.97%          | 1307.00  | 29.00%          | 10.25%         | -17.20%         |
| ITC                               | 402.85   | 1.80   | 0.45%  | 68.48         | 275.83          | 491.00   | 17.95%          | 390.15   | 3.26%           | -1.18%         | -14.76%         |
| JIOFIN                            | 299.20   | 2.25   | 0.76%  | 51.37         | 153.65          | 338.60   | 11.64%          | 198.65   | 50.62%          | -2.94%         | -8.52%          |
| JSWSTEEL                          | 1094.50  | 14.90  | 1.38%  | 10.86         | 118.90          | 1223.90  | 10.57%          | 880.00   | 24.38%          | -7.17%         | 14.02%          |
| KOTAKBANK                         | 2147.10  | -12.40 | -0.57% | 18.08         | 390.00          | 2301.90  | 6.72%           | 1723.75  | 24.56%          | 3.17%          | 21.32%          |
| LT                                | 4073.00  | -0.50  | -0.01% | 7.65          | 311.83          | 4140.00  | 1.62%           | 2965.30  | 37.36%          | 1.85%          | 8.39%           |
| M&M                               | 3612.50  | 8.90   | 0.25%  | 14.01         | 505.24          | 3795.00  | 4.81%           | 2425.00  | 48.97%          | -2.47%         | 18.10%          |
| MARUTI                            | 16681.00 | 267.00 | 1.63%  | 2.72          | 449.63          | 16693.00 | 0.07%           | 10725.00 | 55.53%          | 3.04%          | 49.18%          |
| MAXHEALTH                         | 1075.10  | -0.70  | -0.07% | 20.94         | 225.89          | 1314.30  | 18.20%          | 940.05   | 14.37%          | -3.66%         | -9.85%          |
| NESTLEIND                         | 1256.00  | 11.60  | 0.93%  | 8.80          | 110.32          | 1311.60  | 4.24%           | 1055.00  | 19.05%          | -1.64%         | -43.13%         |
| NTPC                              | 320.90   | 1.00   | 0.31%  | 89.26         | 286.87          | 371.45   | 13.61%          | 292.80   | 9.60%           | -2.60%         | -6.39%          |
| ONGC                              | 234.60   | 1.71   | 0.73%  | 46.14         | 108.17          | 273.50   | 14.22%          | 205.00   | 14.44%          | -5.69%         | -4.61%          |
| POWERGRID                         | 265.10   | 1.65   | 0.63%  | 100.54        | 265.72          | 325.60   | 18.58%          | 247.30   | 7.20%           | -3.92%         | -18.07%         |
| RELIANCE                          | 1577.00  | 11.90  | 0.76%  | 101.84        | 1600.93         | 1581.30  | 0.27%           | 1114.85  | 41.45%          | 3.01%          | 24.88%          |
| SBILIFE                           | 2024.80  | -3.60  | -0.18% | 5.27          | 106.46          | 2086.60  | 2.96%           | 1372.55  | 47.52%          | 1.76%          | 45.09%          |
| SBIN                              | 974.50   | -5.80  | -0.59% | 59.59         | 581.47          | 999.00   | 2.45%           | 680.00   | 43.31%          | 0.81%          | 16.96%          |
| SHRIRAMFIN                        | 934.80   | 33.10  | 3.67%  | 318.94        | 2982.48         | 949.80   | 1.58%           | 493.35   | 89.48%          | 9.94%          | -69.24%         |
| SUNPHARMA                         | 1771.50  | 26.60  | 1.52%  | 14.67         | 258.63          | 1910.00  | 7.25%           | 1548.00  | 14.44%          | -0.79%         | -3.12%          |
| TATACONSUM                        | 1176.40  | -7.60  | -0.64% | 6.70          | 79.04           | 1202.80  | 2.19%           | 882.90   | 33.24%          | 2.59%          | 30.20%          |
| TMPV                              | 358.95   | 6.30   | 1.79%  | 107.98        | 386.91          | 810.00   | 55.69%          | 337.70   | 6.29%           | -5.02%         | #VALUE!         |
| TATASTEEL                         | 169.06   | 0.37   | 0.22%  | 237.29        | 403.40          | 186.94   | 9.56%           | 122.62   | 37.87%          | -2.18%         | 16.77%          |
| TCS                               | 3324.90  | 42.90  | 1.31%  | 26.33         | 872.54          | 4382.00  | 24.12%          | 2866.60  | 15.99%          | 6.31%          | -24.51%         |
| TECHM                             | 1642.50  | 30.00  | 1.86%  | 14.66         | 240.65          | 1773.60  | 7.39%           | 1209.40  | 35.81%          | 13.40%         | -9.35%          |
| TITAN                             | 3928.20  | -1.90  | -0.05% | 5.70          | 224.11          | 3961.90  | 0.85%           | 2925.00  | 34.30%          | 1.31%          | 15.53%          |
| TRENT                             | 4219.00  | 156.80 | 3.86%  | 13.16         | 547.20          | 7493.05  | 43.69%          | 3930.10  | 7.35%           | -7.13%         | -42.90%         |
| ULTRACEMCO                        | 11531.00 | 35.00  | 0.30%  | 1.71          | 196.31          | 13097.00 | 11.96%          | 10047.85 | 14.76%          | -1.80%         | -2.28%          |
| WIPRO                             | 272.65   | 8.20   | 3.10%  | 146.51        | 397.45          | 324.60   | 16.00%          | 228.00   | 19.58%          | 9.78%          | -15.40%         |

## Disclaimer / Disclosures

### ANALYST CERTIFICATION

I, Mrs. Vaishali Parekh B.com, Research Analyst, author and the name subscribed to this report, hereby certify that all of the views expressed in this research report accurately reflect our views about the subject issuer(s) or securities. We also certify that no part of our compensation was, is, or will be directly or indirectly related to the specific recommendation(s) or view(s) in this report.

Terms & conditions and other disclosures:

Prabhudas Lilladher Pvt. Ltd, Mumbai, India (hereinafter referred to as "PL") is engaged in the business of Stock Broking, Portfolio Manager, Depository Participant and distribution for third party financial products. PL is a subsidiary of Prabhudas Lilladher Advisory Services Pvt Ltd. which has its various subsidiaries engaged in business of commodity broking, investment banking, financial services (margin funding) and distribution of third party financial/other products, details in respect of which are available at [www.plindia.com](http://www.plindia.com)

This document has been prepared by the Research Division of PL and is meant for use by the recipient only as information and is not for circulation. This document is not to be reported or copied or made available to others without prior permission of PL. It should not be considered or taken as an offer to sell or a solicitation to buy or sell any security.

The information contained in this report has been obtained from sources that are considered to be reliable. However, PL has not independently verified the accuracy or completeness of the same. Neither PL nor any of its affiliates, its directors or its employees accepts any responsibility of whatsoever nature for the information, statements and opinion given, made available or expressed herein or for any omission therein.

Recipients of this report should be aware that past performance is not necessarily a guide to future performance and value of investments can go down as well. The suitability or otherwise of any investments will depend upon the recipient's particular circumstances and, in case of doubt, advice should be sought from an independent expert/advisor.

Either PL or its affiliates or its directors or its employees or its representatives or its clients or their relatives may have position(s), make market, act as principal or engage in transactions of securities of companies referred to in this report and they may have used the research material prior to publication.

PL may from time to time solicit or perform investment banking or other services for any company mentioned in this document.

PL is registered as Research Analyst under Securities and Exchange Board of India (Research Analysts) Regulations, 2014 PL submits that no material disciplinary action has been taken on us by any Regulatory Authority impacting Equity Research Analysis activities.

PL or its research analysts or its associates or his relatives do not have any financial interest in the subject company.

PL or its research analysts or its associates or his relatives do not have actual/beneficial ownership of one per cent or more securities of the subject company at the end of the month immediately preceding the date of publication of the research report.

PL or its research analysts or its associates or his relatives do not have any material conflict of interest at the time of publication of the research report.

PL or its associates might have received compensation from the subject company in the past twelve months.

PL or its associates might have managed or co-managed public offering of securities for the subject company in the past twelve months or mandated by the subject company for any other assignment in the past twelve months.

PL or its associates might have received any compensation for investment banking or merchant banking or brokerage services from the subject company in the past twelve months.

PL or its associates might have received any compensation for products or services other than investment banking or merchant banking or brokerage services from the subject company in the past twelve months PL or its associates might have received any compensation or other benefits from the subject company or third party in connection with the research report.

PL encourages independence in research report preparation and strives to minimize conflict in preparation of research report. PL or its analysts did not receive any compensation or other benefits from the subject Company or third party in connection with the preparation of the research report. PL or its Research Analysts do not have any material conflict of interest at the time of publication of this report.

It is confirmed that Mrs.Vaishali Parekh B.com, Research Analyst of this report has not received any compensation from the companies mentioned in the report in the preceding twelve months compensation of our Research Analysts is not based on any specific merchant banking, investment banking or brokerage service transactions.

The Research analysts for this report certifies that all of the views expressed in this report accurately reflect his or her personal views about the subject company or companies and its or their securities, and no part of his or her compensation was, is or will be, directly or indirectly related to specific recommendations or views expressed in this report.

The research analysts for this report has not served as an officer, director or employee of the subject company PL or its research analysts have not engaged in market making activity for the subject company

Our sales people, traders, and other professionals or affiliates may provide oral or written market commentary or trading strategies to our clients that reflect opinions that are contrary to the opinions expressed herein, and our proprietary trading and investing businesses may make investment decisions that are inconsistent with the recommendations expressed herein. In reviewing these materials, you should be aware that any or all of the foregoing, among other things, may give rise to real or potential conflicts of interest.

PL and its associates, their directors and employees may (a) from time to time, have a long or short position in, and buy or sell the securities of the subject company or (b) be engaged in any other transaction involving such securities and earn brokerage or other compensation or act as a market maker in the financial instruments of the subject company or act as an advisor or lender/borrower to the subject company or may have any other potential conflict of interests with respect to any recommendation and other related information and opinions.