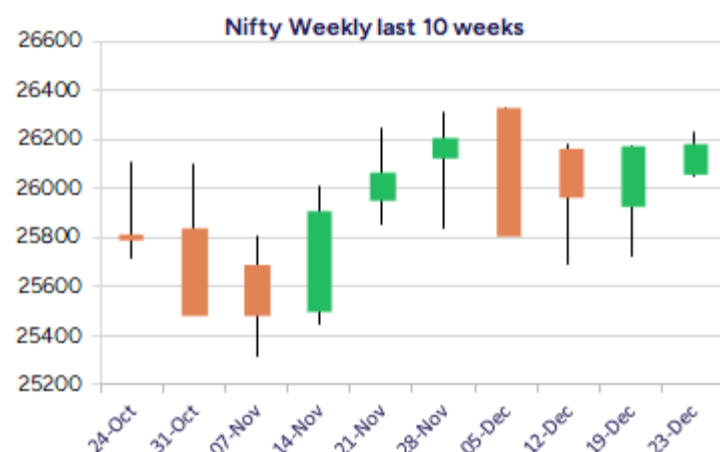
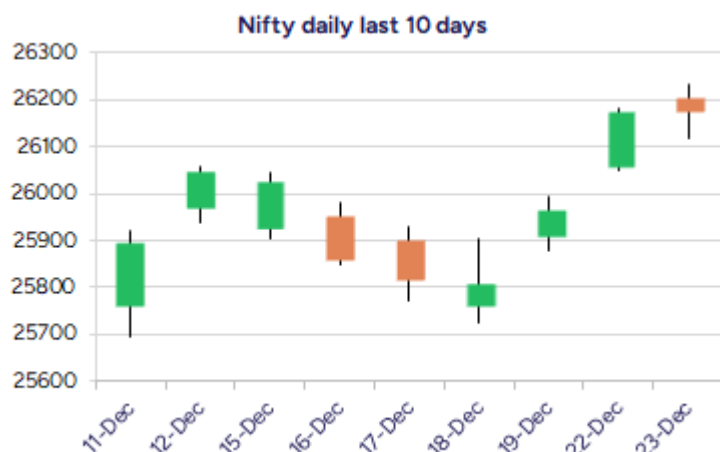


Date: 24th December 2025

* Sensex 85524.84 - 42.64

* Nifty 26177.15 + 04.75

* Bank Nifty 59299.55 - 04.45



*Blue candle → Close rate > Open rate * Red candle → Close rate < Open rate

Market Preview

Nifty takes a breather; ends flat

Nifty witnessed a sluggish session with narrow rangebound movement throughout the session and ended on a flat note with bias maintained intact. BankNifty witnessed a subdued session lingering around the 59300 zone with bias overall maintained positive and would need a significant move in the coming sessions. The market breadth was overall positive with the advance decline indicating a ratio of 3:2 at close.

Market Forecast

Nifty daily range 26050-26300

Nifty, after the 3 consecutive strong sessions, takes a breather near the 26200 zone and remained rangebound within a narrow band for the entire session to close on a flat note with bias and sentiment maintained intact with an optimistic approach. As mentioned earlier in our report, the index would have the important and crucial support near the 50EMA level at 25800 zone and on the upside, the near-term target expected is around the long-term trendline zone at 25450 level.

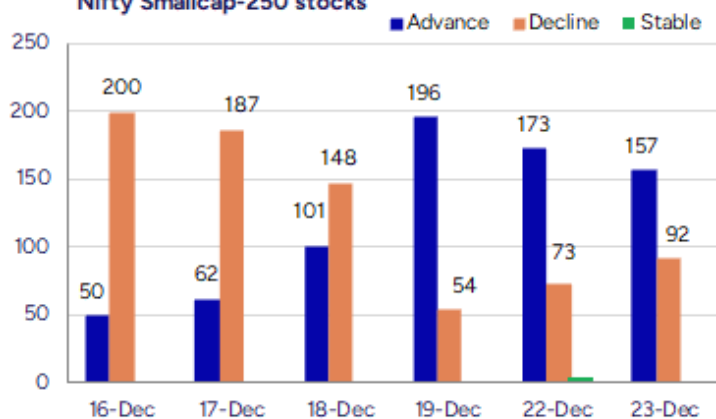
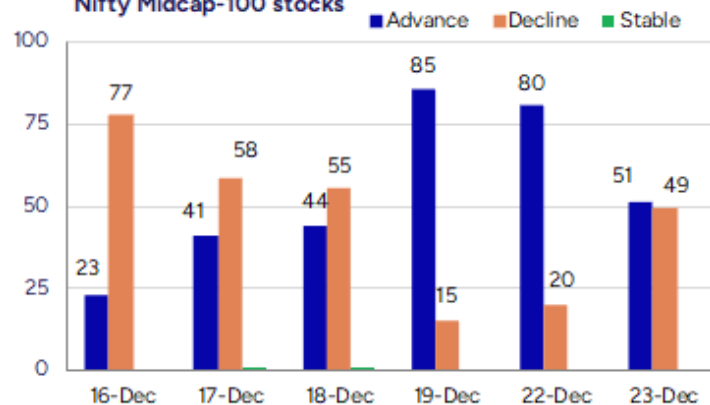
BankNifty witnessed a sluggish lack lustre session with a narrow rangebound movement to end on a flat note near the 59300 zone. The index overall is having a consolidation period with the support maintained strong near the 58700 zone and on the upside a decisive breach above the 59800 level is necessary to establish conviction and trigger for fresh upward move in the coming days having targets of 61300 and 62700 levels expected.

The support for the day is seen at 26050 levels, while the resistance is seen at 26300 levels. BankNifty would have the daily range of 59000-59800 levels.

Sensex	Period	Closing	% Chng	Trend	Reversal	2 Sup	1 Sup	Pivot	1 Res	2 Res
Nifty	Daily	26177.15	0.02%	3	26004.95	26062	26120	26177	26234	26291
	Weekly	25966.40	-0.31%	-2	26103.70	25592	25779	25913	26100	26234
	Monthly	26202.95	1.87%	2	25767.20	24953	25578	25944	26569	26935
Bank Nifty	Daily	59299.55	-0.01%	2	59178.70	59121	59210	59306	59396	59492
	Weekly	59069.20	-0.54%	-1	59660.95	58285	58677	59105	59497	59925
	Monthly	59752.70	3.42%	2	58620.10	56200	57976	58935	60712	61671
Sensex	Daily	85524.84	-0.05%	3	85065.00	85162	85344	85524	85706	85886
	Weekly	84929.36	-0.40%	-1	85365.10	83775	84352	84815	85393	85856
	Monthly	85706.67	2.11%	2	84235.40	81429	83568	84811	86950	88193

Gainers - Losers (Nifty 500 Stocks)

Gainers				Losers			
Company Name	Last Price	% Gain	Volume	Company Name	Last Price	% Loss	Volume
Chola Invest.	1678.5	5.91%	7715262	Asahi India	986.30	-2.14%	84533
Alok Industries	16.85	5.05%	45128876	ACC	1754.2	-1.59%	872645
Coal India	400.4	3.66%	18477790	Aadhar Housing	480.85	-1.58%	170867
Emcure Pharmace	1,426.50	3.44%	100787	BLS Internation	322.50	-1.53%	605655
Escorts Kubota	3,747.00	3.35%	185186	BSE Limited	2,737.50	-1.37%	3825150
AFFLE 3I	1,766.00	3.14%	250719	Adani Energy	994.6	-1.32%	597737
Chola Fin Hold	1,868.80	3.10%	204088	Balkrishna Ind	2309.9	-1.29%	106479

Nifty Smallcap-250 stocks

Nifty Midcap-100 stocks


Nifty Daily chart with RSI indicator



BankNifty Daily chart with RSI indicator



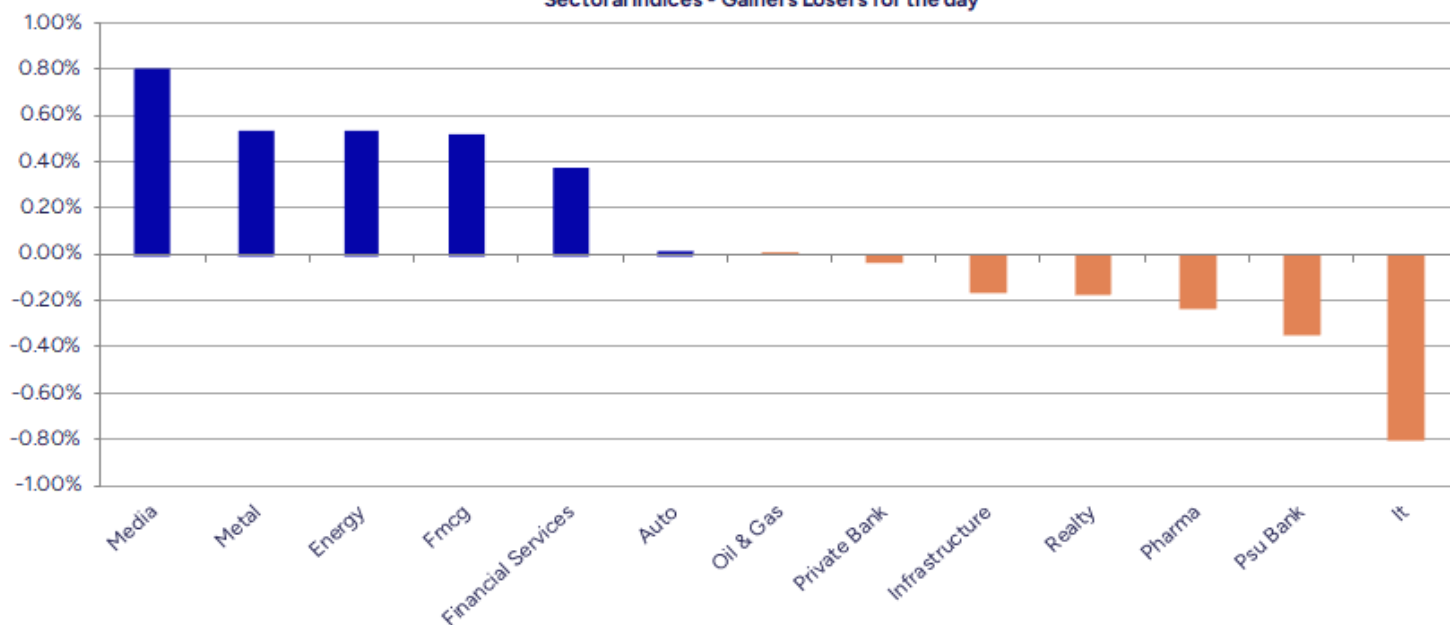
Breakouts - Cross above 200 DMA			
Company Name	LCP	Change %	200 DMA
Puravankara	283	7.21	263.98
Freshara Agro	176	4.43	168.53
NLC India	252.82	4.17	242.7
Cineline India	92	3.70	88.72
Coal India	399.85	3.18	387.54
Jupiter Wagons	351.75	2.79	342.2
Rockingdeals	238.5	2.77	232.08
Rajdarshan Ind	48.11	2.30	47.03
Fert and Chem	895	2.10	876.6
Ram Ratna Wires	641.05	1.98	628.59
Mahindra Logist	330.65	1.84	324.67
Railtel	366.45	1.81	359.92
Sanghi Ind	63.84	1.43	62.94
Dollex Agrotech	39.95	1.06	39.53
Kiri Industries	587	1.02	581.09
Powergrid	89.55	0.82	88.82
Steelcast	212	0.82	210.28
IFCI	53.78	0.82	53.34

* Stocks crossing above its Simple Moving Average (200DMA)

Breakdown - Cross below 200 DMA			
Company Name	LCP	Change %	200 DMA
Kataria Industr	101	-4.00	105.21
Bharat Wire Rop	180.77	-2.79	185.95
HVAX Technologi	770	-2.33	788.34
Schaeffler Ind	3789.1	-2.13	3871.62
Uttam Sugar	261.2	-1.54	265.28
Expleo Solution	1016.5	-1.51	1032.07
S A Tech Softwa	54.65	-1.41	55.43
Sunteck Realty	412	-1.05	416.37
Megastar Foods	237.1	-0.97	239.42
Balu Forge Indu	619	-0.95	624.93
Medplus Health	815.55	-0.65	820.92
JSW Holdings	20330	-0.60	20453.4
Vardhman Text	443.7	-0.51	445.96
Goldiam Inter	366.65	-0.50	368.49
Varun Beverages	482.95	-0.49	485.31
PVR INOX	1031	-0.41	1035.28
Vinsys IT	385.1	-0.37	386.52
PNB Housing Fin	932.5	-0.21	934.46

* Stocks crossing below its Simple Moving Average (200DMA)

Sectoral Indices - Gainers Losers for the day



Stocks witnessing a volume surge as compared to their 5 day average volume

Watch out for the stocks that have seen a huge spurt in its share price over the last three days

Volume Shockers - NSE					
Company name	LCP	% Chg	Volume	Avg Vol *	% Chg
Prism Johnson	151.75	16.87	1567358	8450	18448
AYM Syntex	155.1	-1.34	160865	1183	13498
Kopran	152.95	14.74	818911	6053	13429
Aurum PropTech	188.5	3.46	774214	6867	11174
Omaxe	80.48	19.99	880622	8464	10304
Restaurant Bran	66.26	2.65	10140398	116107	8634
Puravankara	257	6.84	1376098	18382	7386
CL Educate	81.55	-1.89	102534	1557	6485
Themis Medicare	104.85	2.24	188701	3294	5629
IIRM Holdings	87.5	15.76	158697	2818	5531
Thermax	2937.6	2.11	102482	2048	4904
True Green Bio	61.99	5.84	68220	1489	4482
Orient Cement	170.7	4.18	490511	11500	4165
Latent View	467.15	-3.34	1209439	31870	3695
Bang Overseas	49.24	0.57	214742	6184	3373
Nazara	241.4	6.16	633139	19281	3184
Tube Investment	2594.8	-0.13	108541	3488	3012
GRM Overseas	500.1	3.26	375083	12760	2839
Rajesh Exports	222.75	-3.63	976594	38306	2449
Ambuja Cements	546.75	1.25	661604	28079	2256
Kavveri Defence	75.98	4.99	217901	9417	2214

Price Shockers - NSE				
Company name	LCP	Prv Close	% Chg	Volume
PH CAPITAL	283.35	196.8	43.98	8807
Octaware Techno	52.78	36.66	43.97	1600
Jupiter Wagons	335.85	260.1	29.12	14537556
Kinetic Eng	340.6	273.55	24.51	160039
Deccan Gold	106.35	86.95	22.31	4400094
Omaxe	80.48	65.94	22.05	880622
My Money Sec	43.56	36	21	185
IIRM Holdings	87.5	72.55	20.61	158697
Krypton	45.45	37.76	20.37	31087
Modi Rubber	127.3	106.85	19.14	20291
Suditi Ind	76.25	64.34	18.51	221398
POCL Enterprise	202.9	171.95	18	100747
Kopran	152.95	130.05	17.61	818911
Sasken Tech	1382.05	1183.05	16.82	2822
Dai-ichi Karkar	287.1	245.9	16.75	17403
India Finsec	187	160.8	16.29	459
Godavari Drugs	83.89	72.43	15.82	3920
Dev Information	41	35.46	15.62	14541
Kross	203	176.05	15.31	74552
Electrotherm	902	784.4	14.99	48255
Martin Burn Ltd	51.3	45	14	265

Nifty 50 stocks - Summary Details											
Symbol	LTP	Chng	% Chng	Volume (lacs)	Turnover (crs.)	52w High	Diff with 52w H	52w Low	Diff with 52w L	30 days % chng	365 days % chng
NIFTY 50	26177.15	4.75	0.02%	2165.03	19667.71	26325.80	0.56%	21743.65	20.39%	0.40%	10.96%
ADANIENT	2246.70	-16.80	-0.74%	4.50	101.57	2616.50	14.13%	1967.52	14.19%	-6.56%	-3.47%
ADANIPTS	1492.80	-15.90	-1.05%	9.28	139.38	1549.00	3.63%	1010.75	47.69%	1.95%	27.59%
APOLLOHOSP	7075.00	21.00	0.30%	2.86	202.42	8099.50	12.65%	6001.00	17.90%	-4.56%	-2.73%
ASIANPAINT	2808.00	0.40	0.01%	4.31	120.81	2985.70	5.95%	2124.75	32.16%	-2.40%	23.01%
AXISBANK	1224.50	-8.70	-0.71%	29.19	358.47	1304.00	6.10%	933.50	31.17%	-3.34%	15.05%
BAJAJ-AUTO	9085.00	-79.00	-0.86%	2.16	196.60	9490.00	4.27%	7089.35	28.15%	3.06%	4.29%
BAJAJFINSV	2042.00	-7.80	-0.38%	6.78	138.79	2195.00	6.97%	1551.65	31.60%	-0.13%	30.59%
BAJFINANCE	1011.50	3.70	0.37%	47.12	477.00	1102.50	8.25%	679.20	48.93%	0.37%	-85.28%
BEL	399.25	0.30	0.08%	77.30	309.30	436.00	8.43%	240.25	66.18%	-4.18%	37.17%
BHARTIARTL	2123.00	-24.60	-1.15%	41.11	874.87	2174.50	2.37%	1559.50	36.13%	-0.70%	36.09%
CIPLA	1501.50	-11.40	-0.75%	8.27	124.71	1673.00	10.25%	1335.00	12.47%	0.07%	2.78%
COALINDIA	400.65	14.40	3.73%	184.78	735.75	417.25	3.98%	349.25	14.72%	2.13%	1.11%
DRREDDY	1282.50	-0.90	-0.07%	4.08	52.41	1405.90	8.78%	1020.00	25.74%	3.18%	-4.48%
EICHERMOT	7290.00	-1.50	-0.02%	2.49	182.23	7338.00	0.65%	4646.00	56.91%	2.20%	54.01%
ETERNAL	284.25	-2.45	-0.85%	127.61	364.27	368.45	22.85%	194.80	45.92%	-5.05%	#VALUE!
GRASIM	2823.10	13.40	0.48%	3.99	112.97	2977.80	5.20%	2276.95	23.99%	2.74%	12.90%
HCLTECH	1674.80	4.50	0.27%	16.14	270.29	2012.20	16.77%	1302.75	28.56%	3.87%	-12.61%
HDFCBANK	997.00	9.30	0.94%	179.27	1783.38	1020.50	2.30%	812.15	22.76%	-1.04%	-44.24%
HDFCLIFE	763.00	1.20	0.16%	12.47	94.96	820.75	7.04%	584.30	30.58%	-0.29%	22.12%
HINDALCO	863.85	-0.70	-0.08%	54.51	472.20	872.35	0.97%	546.45	58.08%	11.17%	38.85%
HINDUNILVR	2298.10	8.60	0.38%	11.29	259.44	2750.00	16.43%	2136.00	7.59%	-5.93%	-1.90%
ICICIBANK	1362.40	-6.10	-0.45%	91.04	1239.84	1500.00	9.17%	1186.00	14.87%	-0.07%	6.22%
INDIGO	5152.00	6.50	0.13%	9.69	499.46	6232.50	17.34%	3945.00	30.60%	-11.94%	17.06%
INFY	1664.60	-25.00	-1.48%	65.93	1098.59	1982.80	16.05%	1307.00	27.36%	9.36%	-12.10%
ITC	408.85	6.15	1.53%	100.79	408.87	491.00	16.73%	390.15	4.79%	-1.26%	-13.33%
JIOFIN	298.50	-0.25	-0.08%	53.43	159.74	338.60	11.84%	198.65	50.26%	-1.58%	-1.82%
JSWSTEEL	1095.90	1.00	0.09%	9.62	105.59	1223.90	10.46%	880.00	24.53%	-3.98%	19.35%
KOTAKBANK	2161.30	11.60	0.54%	16.14	349.20	2301.90	6.11%	1723.75	25.38%	2.96%	23.29%
LT	4070.00	-2.40	-0.06%	18.67	760.18	4140.00	1.69%	2965.30	37.25%	1.18%	12.19%
M&M	3622.00	5.30	0.15%	14.14	511.93	3795.00	4.56%	2425.00	49.36%	-3.54%	24.44%
MARUTI	16561.00	-88.00	-0.53%	2.16	358.12	16720.00	0.95%	10725.00	54.41%	4.21%	52.73%
MAXHEALTH	1075.00	-2.60	-0.24%	13.05	140.19	1314.30	18.21%	940.05	14.36%	-8.76%	-7.52%
NESTLEIND	1253.60	-3.60	-0.29%	6.63	83.36	1311.60	4.42%	1055.00	18.82%	-1.83%	-41.89%
NTPC	323.45	2.75	0.86%	60.23	194.92	371.45	12.92%	292.80	10.47%	-1.82%	-3.77%
ONGC	235.40	1.22	0.52%	58.08	137.04	273.50	13.93%	205.00	14.83%	-5.17%	-1.23%
POWERGRID	266.65	1.65	0.62%	105.26	281.69	322.00	17.19%	247.30	7.82%	-4.54%	-16.09%
RELIANCE	1569.00	-6.40	-0.41%	75.06	1180.70	1581.30	0.78%	1114.85	40.74%	1.86%	30.71%
SBILIFE	2024.00	1.70	0.08%	2.90	58.76	2086.60	3.00%	1372.55	47.46%	-0.01%	44.39%
SBIN	971.25	-3.05	-0.31%	51.23	498.65	999.00	2.78%	680.00	42.83%	0.17%	19.99%
SHRIRAMFIN	957.50	22.65	2.42%	146.31	1388.41	959.95	0.26%	493.35	94.08%	13.55%	-67.51%
SUNPHARMA	1753.40	-16.40	-0.93%	11.25	198.37	1910.00	8.20%	1548.00	13.27%	-0.56%	-2.16%
TATACONSUM	1185.20	6.40	0.54%	8.05	95.18	1202.80	1.46%	890.00	33.17%	-0.36%	32.53%
TMPV	362.60	3.45	0.96%	118.83	431.51	810.00	55.23%	337.70	7.37%	-0.86%	#VALUE!
TATASTEEL	170.82	1.60	0.95%	173.38	295.67	186.94	8.62%	122.62	39.31%	0.73%	20.29%
TCS	3305.10	-19.80	-0.60%	23.65	781.65	4322.95	23.55%	2866.60	15.30%	5.53%	-20.27%
TECHM	1631.50	-15.20	-0.92%	11.61	190.12	1773.60	8.01%	1209.40	34.90%	12.67%	-2.33%
TITAN	3916.60	-17.20	-0.44%	4.46	175.48	3961.90	1.14%	2925.00	33.90%	0.76%	17.21%
TRENT	4183.00	-23.80	-0.57%	6.62	278.36	7493.05	44.17%	3930.10	6.43%	-3.49%	-38.42%
ULTRACEMCO	11682.00	150.00	1.30%	1.62	188.97	13097.00	10.80%	10047.85	16.26%	-1.68%	0.96%
WIPRO	271.30	-1.37	-0.50%	75.71	205.37	324.60	16.42%	228.00	18.99%	11.53%	-10.66%

Disclaimer / Disclosures

ANALYST CERTIFICATION

I, Mrs. Vaishali Parekh B.com, Research Analyst, author and the name subscribed to this report, hereby certify that all of the views expressed in this research report accurately reflect our views about the subject issuer(s) or securities. We also certify that no part of our compensation was, is, or will be directly or indirectly related to the specific recommendation(s) or view(s) in this report.

Terms & conditions and other disclosures:

Prabhudas Lilladher Pvt. Ltd, Mumbai, India (hereinafter referred to as "PL") is engaged in the business of Stock Broking, Portfolio Manager, Depository Participant and distribution for third party financial products. PL is a subsidiary of Prabhudas Lilladher Advisory Services Pvt Ltd. which has its various subsidiaries engaged in business of commodity broking, investment banking, financial services (margin funding) and distribution of third party financial/other products, details in respect of which are available at www.plindia.com

This document has been prepared by the Research Division of PL and is meant for use by the recipient only as information and is not for circulation. This document is not to be reported or copied or made available to others without prior permission of PL. It should not be considered or taken as an offer to sell or a solicitation to buy or sell any security.

The information contained in this report has been obtained from sources that are considered to be reliable. However, PL has not independently verified the accuracy or completeness of the same. Neither PL nor any of its affiliates, its directors or its employees accepts any responsibility of whatsoever nature for the information, statements and opinion given, made available or expressed herein or for any omission therein.

Recipients of this report should be aware that past performance is not necessarily a guide to future performance and value of investments can go down as well. The suitability or otherwise of any investments will depend upon the recipient's particular circumstances and, in case of doubt, advice should be sought from an independent expert/advisor.

Either PL or its affiliates or its directors or its employees or its representatives or its clients or their relatives may have position(s), make market, act as principal or engage in transactions of securities of companies referred to in this report and they may have used the research material prior to publication.

PL may from time to time solicit or perform investment banking or other services for any company mentioned in this document.

PL is registered as Research Analyst under Securities and Exchange Board of India (Research Analysts) Regulations, 2014 PL submits that no material disciplinary action has been taken on us by any Regulatory Authority impacting Equity Research Analysis activities.

PL or its research analysts or its associates or his relatives do not have any financial interest in the subject company.

PL or its research analysts or its associates or his relatives do not have actual/beneficial ownership of one per cent or more securities of the subject company at the end of the month immediately preceding the date of publication of the research report.

PL or its research analysts or its associates or his relatives do not have any material conflict of interest at the time of publication of the research report.

PL or its associates might have received compensation from the subject company in the past twelve months.

PL or its associates might have managed or co-managed public offering of securities for the subject company in the past twelve months or mandated by the subject company for any other assignment in the past twelve months.

PL or its associates might have received any compensation for investment banking or merchant banking or brokerage services from the subject company in the past twelve months.

PL or its associates might have received any compensation for products or services other than investment banking or merchant banking or brokerage services from the subject company in the past twelve months PL or its associates might have received any compensation or other benefits from the subject company or third party in connection with the research report.

PL encourages independence in research report preparation and strives to minimize conflict in preparation of research report. PL or its analysts did not receive any compensation or other benefits from the subject Company or third party in connection with the preparation of the research report. PL or its Research Analysts do not have any material conflict of interest at the time of publication of this report.

It is confirmed that Mrs.Vaishali Parekh B.com, Research Analyst of this report has not received any compensation from the companies mentioned in the report in the preceding twelve months compensation of our Research Analysts is not based on any specific merchant banking, investment banking or brokerage service transactions.

The Research analysts for this report certifies that all of the views expressed in this report accurately reflect his or her personal views about the subject company or companies and its or their securities, and no part of his or her compensation was, is or will be, directly or indirectly related to specific recommendations or views expressed in this report.

The research analysts for this report has not served as an officer, director or employee of the subject company PL or its research analysts have not engaged in market making activity for the subject company

Our sales people, traders, and other professionals or affiliates may provide oral or written market commentary or trading strategies to our clients that reflect opinions that are contrary to the opinions expressed herein, and our proprietary trading and investing businesses may make investment decisions that are inconsistent with the recommendations expressed herein. In reviewing these materials, you should be aware that any or all of the foregoing, among other things, may give rise to real or potential conflicts of interest.

PL and its associates, their directors and employees may (a) from time to time, have a long or short position in, and buy or sell the securities of the subject company or (b) be engaged in any other transaction involving such securities and earn brokerage or other compensation or act as a market maker in the financial instruments of the subject company or act as an advisor or lender/borrower to the subject company or may have any other potential conflict of interests with respect to any recommendation and other related information and opinions.