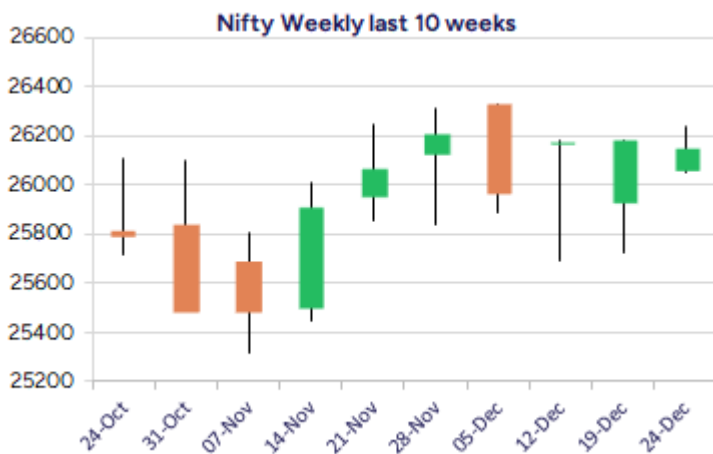
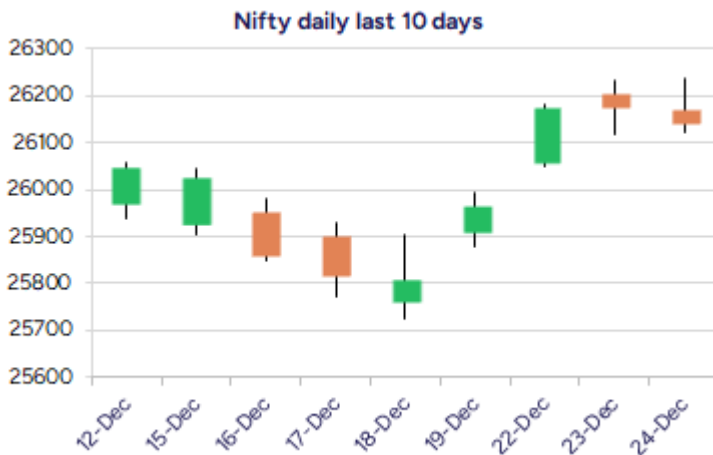


* Sensex 85408.70 -116.14

* Nifty 26142.10 -35.05

* Bank Nifty 59183.60 -115.95



*Blue candle → Close rate > Open rate * Red candle → Close rate < Open rate

Market Preview

Nifty consolidates near 26200 zone

Nifty fizzled out after the positive opening resisting near the 26230 zone and ended on a flat note with overall bias maintained intact. BankNifty once again found resisted near the tough barrier of 59500 level and slipped with profit booking seen to end near the 59200 zone. The market breadth was slightly weak with the advance decline indicating a ratio of 2:3 at close.

Market Forecast

Nifty daily range 26000-26300

Nifty, once again remained subdued after the positive opening session finding resistance near the 26230 zone, thereafter, witnessing a gradual slide to end on a flat note near 26150 level with bias remaining intact. The index indicating a flat pattern on the daily chart, would continue to have the important and crucial support near the 50EMA level at 25800 zone and on the upside, a decisive close above the 26250 zone shall trigger for next upward move with near-term target expected around the long-term trendline zone at 25450 level.

BankNifty continue to move within a range finding tough resistance near the 59500 zone and fizzled out during the intraday session after the positive opening to end in the red just below the 59200 level with overall bias maintained positive. The index, as said earlier, is overall having a consolidation period with the support maintained strong near the 58700 zone and on the upside a decisive breach above the 59800 level is necessary to trigger for fresh upward move in the coming days.

The support for the day is seen at 26000 levels, while the resistance is seen at 26300 levels. BankNifty would have the daily range of 58800-59600 levels.

Sensex	Period	Closing	% Chng	Trend	Reversal	2 Sup	1 Sup	Pivot	1 Res	2 Res
Nifty	Daily	26142.10	-0.13%	4	26027.90	26054	26098	26167	26211	26281
	Weekly	25966.40	-0.31%	-2	26103.70	25592	25779	25913	26100	26234
	Monthly	26202.95	1.87%	2	25767.20	24953	25578	25944	26569	26935
Bank Nifty	Daily	59183.60	-0.20%	3	59141.30	58900	59042	59260	59402	59620
	Weekly	59069.20	-0.54%	-1	59660.95	58285	58677	59105	59497	59925
	Monthly	59752.70	3.42%	2	58620.10	56200	57976	58935	60712	61671
Sensex	Daily	85408.70	-0.14%	4	85105.15	85100	85255	85496	85651	85892
	Weekly	84929.36	-0.40%	-1	85365.10	83775	84352	84815	85393	85856
	Monthly	85706.67	2.11%	2	84235.40	81429	83568	84811	86950	88193

Gainers - Losers (Nifty 500 Stocks)

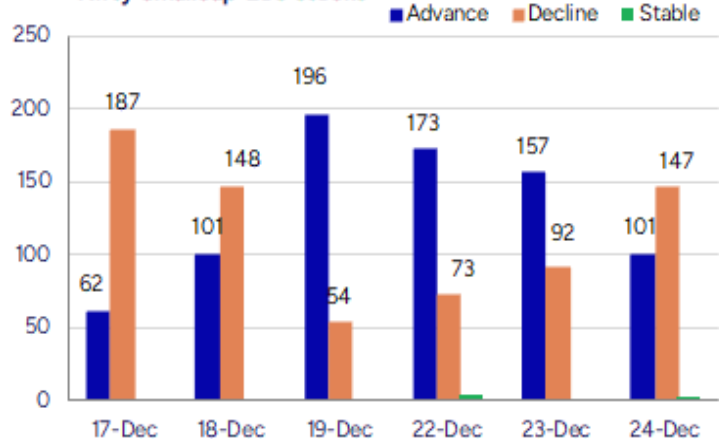
Gainers

Company Name	Last Price	% Gain	Volume
Bharat Dynamics	1481.2	3.48%	2712436
City Union Bank	296.05	2.58%	3114217
Ajanta Pharma	2734.5	2.49%	1012434
Berger Paints	555.15	2.04%	287246
Can Fin Homes	947.05	1.93%	132601
Castrol	189.39	1.86%	46414170
BEML	1,867.90	1.68%	320906

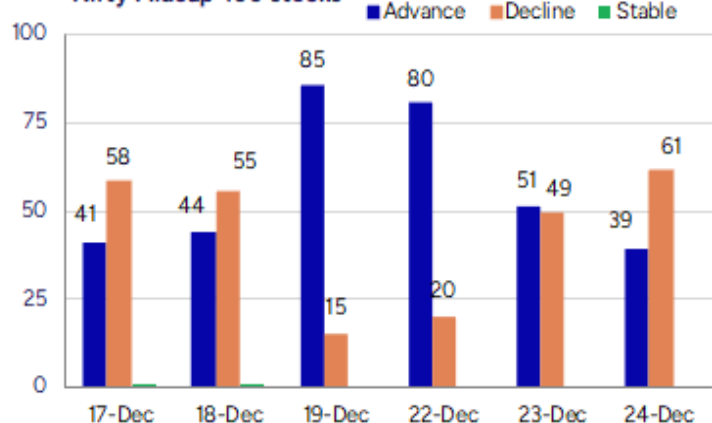
Losers

Company Name	Last Price	% Loss	Volume
BSE Limited	2,670.90	-2.43%	3417445
COFORGE	1737.7	-2.39%	2700474
Apar Ind	8,690.00	-2.27%	61112
Bandhan Bank	146.33	-2.02%	3947637
C. E. Info Syst	1,700.90	-1.72%	22892
Asahi India	969.9	-1.66%	47992
Bombay Burmah	1862.7	-1.66%	39074

Nifty Smallcap-250 stocks



Nifty Midcap-100 stocks



Nifty Daily chart with RSI indicator



BankNifty Daily chart with RSI indicator



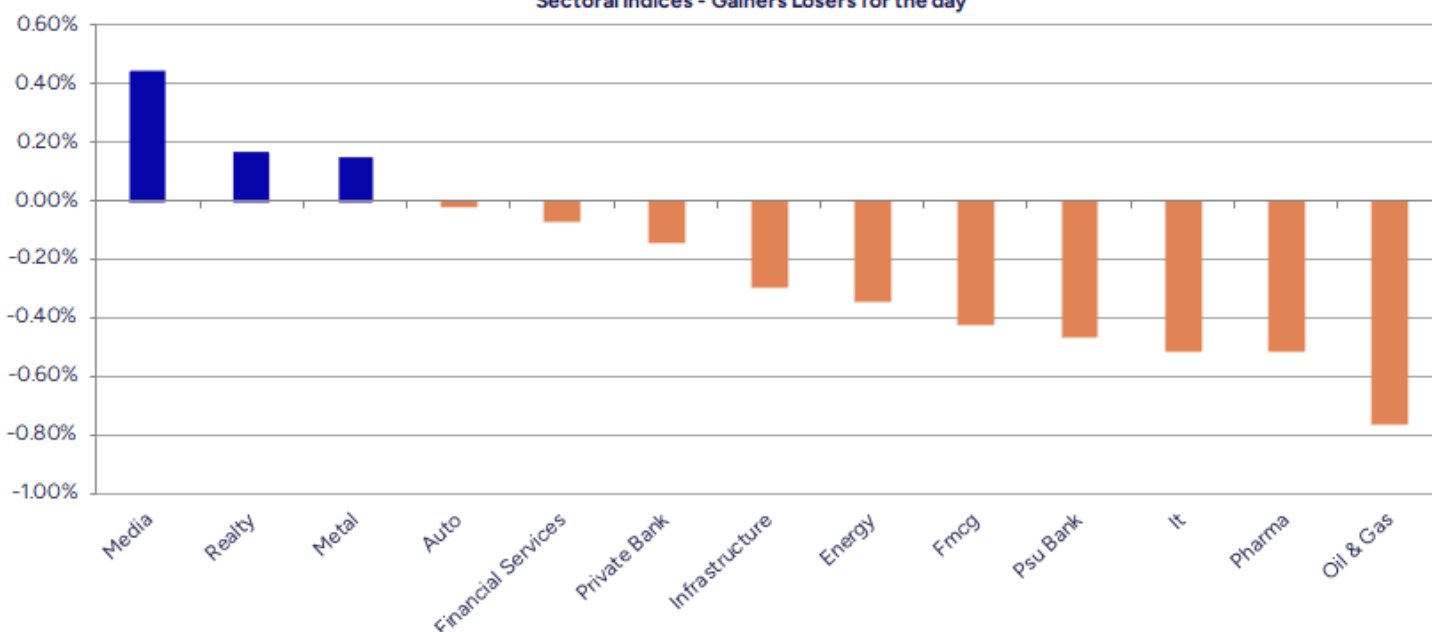
Breakouts - Cross above 200 DMA			
Company Name	LCP	Change %	200 DMA
Madhav Copper	53.9	6.02	50.84
Sasken Tech	1520	5.66	1438.54
VIP Industries	402.5	4.92	383.61
Mangalam Alloys	51.85	3.95	49.88
PNB Housing Fin	964.4	3.11	935.29
Rajdarshan Ind	48.39	2.85	47.05
Party	86	2.82	83.64
HVAX Technologi	808	2.42	788.89
The Hi-Tech Gea	694	1.64	682.79
Berger Paints	555.95	1.63	547.04
ICRA	6309	1.37	6223.81
TITAGARH	861	1.28	850.16
NK Industries	68	1.15	67.23
Indef Manufactu	346.65	1.03	343.11
Dalmia Bharat	2110.1	0.78	2093.69
Vinsys IT	389.7	0.77	386.71
SBFC Finance	106.04	0.54	105.47
Engineers India	201.12	0.50	200.11

* Stocks crossing above its Simple Moving Average (200DMA)

Breakdown - Cross below 200 DMA			
Company Name	LCP	Change %	200 DMA
Krishival Foods	355.25	-5.57	376.21
Vertexplus	111.1	-4.45	116.28
Laxmi Goldorna	276.15	-2.65	283.68
Refractory Shap	57.6	-1.97	58.76
Muthoot Cap	277.8	-1.92	283.24
Max Estates	451.25	-1.66	458.89
Rajputana Bio	240.7	-1.48	244.31
Bombay Burmah	1863.9	-1.35	1889.39
Ambey Labs	42	-1.11	42.47
Gateway Distri	62.63	-1.04	63.29
Mamata Machiner	415.5	-0.95	419.49
Ind Motor Parts	1035.6	-0.87	1044.72
Sunflag Iron	263.6	-0.81	265.75
Quest Lab	97.6	-0.67	98.26
Syngene Intl	653.05	-0.63	657.17
Krishna Defence	788	-0.56	792.44
Canarys Automat	30.15	-0.53	30.31
Dolat Algotech	85.76	-0.53	86.22

* Stocks crossing below its Simple Moving Average (200DMA)

Sectoral Indices - Gainers Losers for the day



Stocks witnessing a volume surge as compared to their 5 day average volume

Watch out for the stocks that have seen a huge spurt in its share price over the last three days

Volume Shockers - NSE					
Company name	LCP	% Chg	Volume	Avg Vol *	% Chg
VIP Industries	402	10.21	41783688	13503	309335
Pacific Ind	165	0.95	214264	1100	19382
Transpek	1280	3.01	310566	1937	15932
Spaisa Capita	343.7	9.09	140364	2350	5873
Krishna Institu	629.95	-1.69	241612	4103	5789
Jai Hind Synth	43.87	-8.6	88141	1646	5256
JBM Auto	639.1	10.59	2728204	51405	5207
Archidply Decor	82.5	3.14	35935	1180	2945
Castrol	189.45	1.91	2618779	112457	2229
Craftsman	7050.6	-0.43	22806	1098	1976
Palash Securiti	109	2.2	49039	2423	1924
Ipca Labs	1413.65	-1.38	72638	3828	1798
Cipla	1496.35	-0.27	1251839	67082	1766
Sigma Solve	57.22	4.99	25466	1373	1755
Tube Investment	2598.9	0.08	63787	3488	1729
Dalmia Bharat	2112.1	2.58	35179	2172	1520
Aplab PP	62.33	4.99	14786	1009	1365
Sapphire Foods	252.7	2.37	43966	3102	1317
Shoppers Stop	414.5	-2.59	1003766	82017	1124
Modi Rubber	152.55	19.98	52822	4462	1084
Websol Energy	94.1	10.06	3534547	313241	1028

Price Shockers - NSE				
Company name	LCP	Prv Close	% Chg	Volume
Modi Rubber	152.55	106.85	42.77	52822
Jupiter Wagons	340.5	260.1	30.91	5777779
Sasken Tech	1515.5	1183.05	28.1	37729
Omaxe	84.23	65.94	27.74	1105896
POCL Enterprise	210	171.95	22.13	87964
IIRM Holdings	88.56	72.55	22.07	185940
Deccan Gold	105.6	86.95	21.45	2625504
Suditi Ind	77.9	64.34	21.08	50552
Kinetic Eng	323.7	273.55	18.33	78485
Nagpur Power	97.25	82.41	18.01	26252
KNR Construct	171.15	146.3	16.99	584274
Sofcom Systems	45.9	39.26	16.91	321601
Manaksia Steels	76.79	66	16.35	19037
Ceinsys Tech	1065.8	920.75	15.75	284098
Coromandel Engg	101.51	87.7	15.75	161263
Onix Solar	425.85	367.95	15.74	19543
Esha Media	41.5	35.86	15.73	11060
Kavveri Defence	79.77	68.93	15.73	274254
AAAYUSH WELLNESS	55.05	47.57	15.72	146380
Droneacharya	47.79	41.3	15.71	65000
TeleCanor Glob	35	30.25	15.7	24670

Nifty 50 stocks - Summary Details											
Symbol	LTP	Chng	% Chng	Volume (lacs)	Turnover (crs.)	52w High	Diff with 52w H	52w Low	Diff with 52w L	30 days % chng	365 days % chng
NIFTY 50	26142.10	-35.05	-0.13%	1888.20	17472.69	26325.80	0.70%	21743.65	20.23%	0.42%	10.98%
ADANIENT	2218.00	-30.80	-1.37%	8.25	184.67	2616.50	15.23%	1967.52	12.73%	-7.16%	-4.10%
ADANIPTS	1496.50	2.90	0.19%	13.18	197.89	1549.00	3.39%	1010.75	48.06%	0.93%	26.31%
APOLLOHOSP	7177.00	103.50	1.46%	3.51	251.88	8099.50	11.39%	6001.00	19.60%	-4.30%	-2.46%
ASIANPAINT	2786.00	-21.80	-0.78%	5.12	143.40	2985.70	6.69%	2124.75	31.12%	-2.39%	23.02%
AXISBANK	1225.90	0.90	0.07%	31.55	387.83	1304.00	5.99%	933.50	31.32%	-3.98%	14.29%
BAJAJ-AUTO	9174.00	75.00	0.82%	1.68	153.55	9490.00	3.33%	7089.35	29.41%	2.33%	3.55%
BAJAJFINSV	2036.60	-11.00	-0.54%	13.44	274.70	2195.00	7.22%	1551.65	31.25%	-0.23%	30.45%
BAJFINANCE	1009.40	-2.00	-0.20%	59.85	613.10	1102.50	8.44%	679.20	48.62%	0.73%	-85.23%
BEL	399.55	0.15	0.04%	80.97	324.83	436.00	8.36%	240.25	66.31%	-4.07%	37.32%
BHARTIARTL	2123.50	0.60	0.03%	31.45	669.19	2174.50	2.35%	1559.50	36.17%	-1.84%	34.52%
CIPLA	1495.30	-5.40	-0.36%	10.23	153.06	1673.00	10.62%	1335.00	12.01%	-0.73%	1.95%
COALINDIA	402.40	2.00	0.50%	176.22	716.50	417.25	3.56%	349.25	15.22%	5.87%	4.82%
DRREDDY	1267.10	-16.40	-1.28%	12.65	160.00	1405.90	9.87%	1020.00	24.23%	3.18%	-4.48%
EICHERMOT	7300.00	-3.00	-0.04%	2.05	149.97	7349.50	0.67%	4646.00	57.12%	2.36%	54.25%
ETERNAL	284.60	0.25	0.09%	129.72	369.25	368.45	22.76%	194.80	46.10%	-5.83%	#VALUE!
GRASIM	2830.60	0.80	0.03%	4.45	126.16	2977.80	4.94%	2276.95	24.32%	3.47%	13.71%
HCLTECH	1675.50	-4.40	-0.26%	9.90	165.77	2012.20	16.73%	1302.75	28.61%	4.47%	-12.11%
HDFCBANK	995.30	-1.30	-0.13%	137.00	1364.96	1020.50	2.47%	812.15	22.55%	-0.15%	-43.74%
HDFCLIFE	755.80	-8.15	-1.07%	11.32	86.07	820.75	7.91%	584.30	29.35%	-0.01%	22.47%
HINDALCO	863.95	0.10	0.01%	36.84	320.78	882.30	2.08%	546.45	58.10%	11.08%	38.74%
HINDUNILVR	2283.00	-19.60	-0.85%	5.19	118.91	2750.00	16.98%	2136.00	6.88%	-5.39%	-1.34%
ICICIBANK	1359.00	-4.00	-0.29%	89.55	1219.92	1500.00	9.40%	1186.00	14.59%	-0.47%	5.79%
INDIGO	5077.00	-80.00	-1.55%	9.80	500.51	6232.50	18.54%	3945.00	28.69%	-11.75%	17.32%
INFY	1667.00	-1.30	-0.08%	42.71	709.20	1982.80	15.93%	1307.00	27.54%	7.98%	-13.21%
ITC	406.80	-0.55	-0.14%	57.77	235.20	491.00	17.15%	390.15	4.27%	-0.12%	-12.33%
JIOFIN	299.00	0.30	0.10%	65.48	196.69	338.60	11.70%	198.65	50.52%	-1.60%	-1.84%
JSWSTEEL	1091.20	-5.60	-0.51%	8.07	88.14	1223.90	10.84%	880.00	24.00%	-3.81%	19.56%
KOTAKBANK	2162.00	-0.70	-0.03%	15.58	338.11	2301.90	6.08%	1723.75	25.42%	3.59%	24.04%
LT	4052.00	-6.80	-0.17%	10.21	414.45	4140.00	2.13%	2965.30	36.65%	0.84%	11.82%
M&M	3636.10	11.00	0.30%	8.43	306.82	3795.00	4.19%	2425.00	49.94%	-3.32%	24.73%
MARUTI	16710.00	125.00	0.75%	2.58	431.22	16720.00	0.06%	10725.00	55.80%	3.81%	52.14%
MAXHEALTH	1080.10	4.90	0.46%	10.33	111.97	1314.30	17.82%	940.05	14.90%	-8.97%	-7.72%
NESTLEIND	1259.70	3.20	0.25%	5.99	75.51	1311.60	3.96%	1055.00	19.40%	-1.89%	-41.92%
NTPC	322.40	-0.85	-0.26%	56.77	183.91	371.45	13.21%	292.80	10.11%	-1.04%	-3.00%
ONGC	233.75	-1.74	-0.74%	41.07	96.29	273.50	14.53%	205.00	14.02%	-4.64%	-0.68%
POWERGRID	268.30	1.30	0.49%	61.31	164.67	322.00	16.68%	247.30	8.49%	-3.82%	-15.45%
RELIANCE	1560.60	-10.10	-0.64%	88.15	1374.80	1581.30	1.31%	1114.85	39.98%	1.56%	30.32%
SBILIFE	2021.30	-3.50	-0.17%	3.54	71.78	2086.60	3.13%	1372.55	47.27%	0.11%	44.57%
SBIN	968.85	-3.05	-0.31%	41.05	399.11	999.00	3.02%	680.00	42.48%	-0.07%	19.69%
SHRIRAMFIN	974.00	16.20	1.69%	105.73	1030.03	983.70	0.99%	493.35	97.43%	16.34%	-66.71%
SUNPHARMA	1737.90	-18.00	-1.03%	22.25	386.07	1910.00	9.01%	1548.00	12.27%	-1.34%	-2.93%
TATACONSUM	1179.20	-6.40	-0.54%	5.30	62.50	1202.80	1.96%	890.00	32.49%	0.21%	33.30%
TMPV	359.25	-4.00	-1.10%	92.08	331.87	810.00	55.65%	337.70	6.38%	0.28%	#VALUE!
TATASTEEL	169.89	-1.01	-0.59%	174.29	297.44	186.94	9.12%	122.62	38.55%	1.73%	21.48%
TCS	3313.10	3.10	0.09%	13.68	453.00	4322.95	23.36%	2866.60	15.58%	5.06%	-20.63%
TECHM	1630.50	-2.50	-0.15%	9.55	155.42	1773.60	8.07%	1209.40	34.82%	11.73%	-3.15%
TITAN	3920.00	-5.80	-0.15%	3.99	156.19	3961.90	1.06%	2925.00	34.02%	0.55%	16.97%
TRENT	4284.00	94.60	2.26%	9.60	409.53	7493.05	42.83%	3930.10	9.00%	-3.89%	-38.68%
ULTRACEMCO	11770.00	92.00	0.79%	1.82	213.87	13097.00	10.13%	10047.85	17.14%	-0.43%	2.23%
WIPRO	268.14	-3.26	-1.20%	46.94	126.01	324.60	17.39%	228.00	17.61%	11.01%	-11.07%

Disclaimer / Disclosures

ANALYST CERTIFICATION

I, Mrs. Vaishali Parekh B.com, Research Analyst, author and the name subscribed to this report, hereby certify that all of the views expressed in this research report accurately reflect our views about the subject issuer(s) or securities. We also certify that no part of our compensation was, is, or will be directly or indirectly related to the specific recommendation(s) or view(s) in this report.

Terms & conditions and other disclosures:

Prabhudas Lilladher Pvt. Ltd, Mumbai, India (hereinafter referred to as "PL") is engaged in the business of Stock Broking, Portfolio Manager, Depository Participant and distribution for third party financial products. PL is a subsidiary of Prabhudas Lilladher Advisory Services Pvt Ltd. which has its various subsidiaries engaged in business of commodity broking, investment banking, financial services (margin funding) and distribution of third party financial/other products, details in respect of which are available at www.plindia.com

This document has been prepared by the Research Division of PL and is meant for use by the recipient only as information and is not for circulation. This document is not to be reported or copied or made available to others without prior permission of PL. It should not be considered or taken as an offer to sell or a solicitation to buy or sell any security.

The information contained in this report has been obtained from sources that are considered to be reliable. However, PL has not independently verified the accuracy or completeness of the same. Neither PL nor any of its affiliates, its directors or its employees accepts any responsibility of whatsoever nature for the information, statements and opinion given, made available or expressed herein or for any omission therein.

Recipients of this report should be aware that past performance is not necessarily a guide to future performance and value of investments can go down as well. The suitability or otherwise of any investments will depend upon the recipient's particular circumstances and, in case of doubt, advice should be sought from an independent expert/advisor.

Either PL or its affiliates or its directors or its employees or its representatives or its clients or their relatives may have position(s), make market, act as principal or engage in transactions of securities of companies referred to in this report and they may have used the research material prior to publication.

PL may from time to time solicit or perform investment banking or other services for any company mentioned in this document.

PL is registered as Research Analyst under Securities and Exchange Board of India (Research Analysts) Regulations, 2014 PL submits that no material disciplinary action has been taken on us by any Regulatory Authority impacting Equity Research Analysis activities.

PL or its research analysts or its associates or his relatives do not have any financial interest in the subject company.

PL or its research analysts or its associates or his relatives do not have actual/beneficial ownership of one per cent or more securities of the subject company at the end of the month immediately preceding the date of publication of the research report.

PL or its research analysts or its associates or his relatives do not have any material conflict of interest at the time of publication of the research report.

PL or its associates might have received compensation from the subject company in the past twelve months.

PL or its associates might have managed or co-managed public offering of securities for the subject company in the past twelve months or mandated by the subject company for any other assignment in the past twelve months.

PL or its associates might have received any compensation for investment banking or merchant banking or brokerage services from the subject company in the past twelve months.

PL or its associates might have received any compensation for products or services other than investment banking or merchant banking or brokerage services from the subject company in the past twelve months PL or its associates might have received any compensation or other benefits from the subject company or third party in connection with the research report.

PL encourages independence in research report preparation and strives to minimize conflict in preparation of research report. PL or its analysts did not receive any compensation or other benefits from the subject Company or third party in connection with the preparation of the research report. PL or its Research Analysts do not have any material conflict of interest at the time of publication of this report.

It is confirmed that Mrs.Vaishali Parekh B.com, Research Analyst of this report has not received any compensation from the companies mentioned in the report in the preceding twelve months compensation of our Research Analysts is not based on any specific merchant banking, investment banking or brokerage service transactions.

The Research analysts for this report certifies that all of the views expressed in this report accurately reflect his or her personal views about the subject company or companies and its or their securities, and no part of his or her compensation was, is or will be, directly or indirectly related to specific recommendations or views expressed in this report.

The research analysts for this report has not served as an officer, director or employee of the subject company PL or its research analysts have not engaged in market making activity for the subject company

Our sales people, traders, and other professionals or affiliates may provide oral or written market commentary or trading strategies to our clients that reflect opinions that are contrary to the opinions expressed herein, and our proprietary trading and investing businesses may make investment decisions that are inconsistent with the recommendations expressed herein. In reviewing these materials, you should be aware that any or all of the foregoing, among other things, may give rise to real or potential conflicts of interest.

PL and its associates, their directors and employees may (a) from time to time, have a long or short position in, and buy or sell the securities of the subject company or (b) be engaged in any other transaction involving such securities and earn brokerage or other compensation or act as a market maker in the financial instruments of the subject company or act as an advisor or lender/borrower to the subject company or may have any other potential conflict of interests with respect to any recommendation and other related information and opinions.