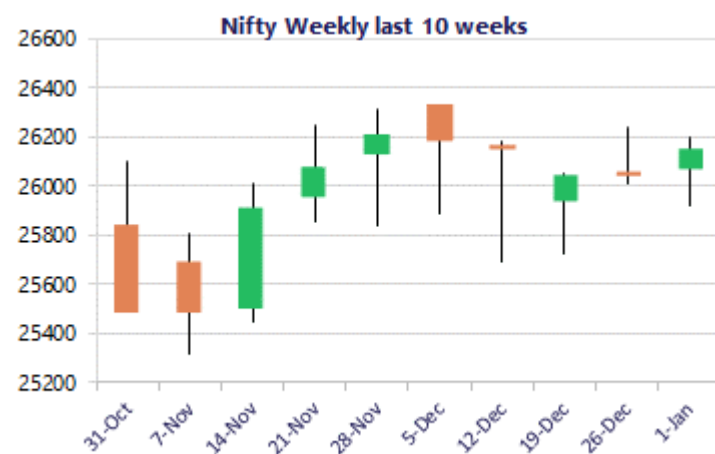
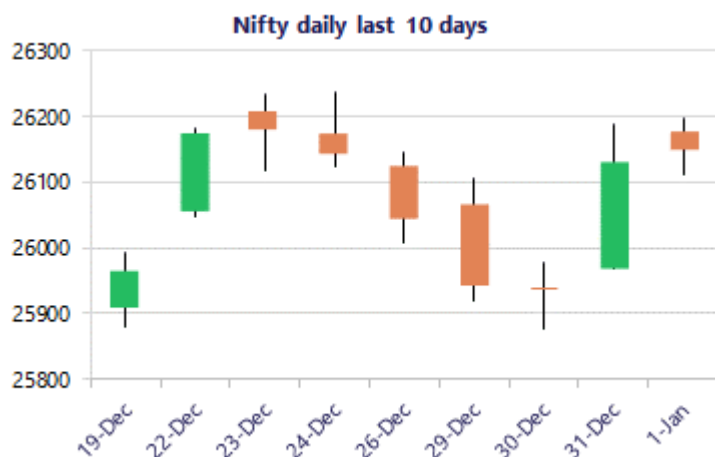


Date: 02<sup>nd</sup> January 2026

\* Sensex 85188.60 - 32.00

\* Nifty 26146.55 + 16.95

\* Bank Nifty 59711.55 + 129.70



\*Blue candle → Close rate > Open rate \* Red candle → Close rate < Open rate

## Market Preview

### Nifty begins the year on a flat note

Nifty witnessed a narrow rangebound session to end on a flat note near the 26150 zone with bias maintained positive anticipating for further rise in the coming sessions. BankNifty remained flat with a lack lustre session gripped between a narrow band throughout the session to end near the 59700 zone with a marginal gain. The market breadth was almost flat slightly shifted towards the positive side with the advance decline ratio almost neutral at close.

## Market Forecast

### Nifty daily range 26000-26300

Nifty, started the year with a rangebound movement gripped between within a narrow band throughout the session and ended on a flat note near the 26150 zone with bias and sentiment maintained positive anticipating for further rise in the coming sessions. The index would have the important support positioned near the 25850 level as we have been mentioning earlier and, on the upside, would need to move past the 26200 zone to establish conviction and thereafter, expect to continue with the upward move to trigger for fresh breakout in the coming days.

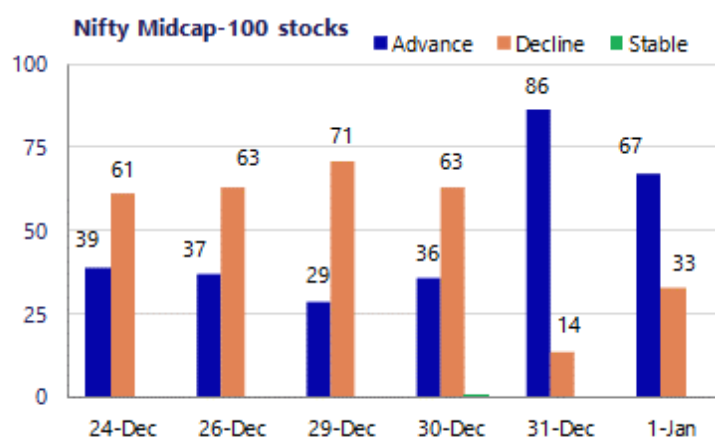
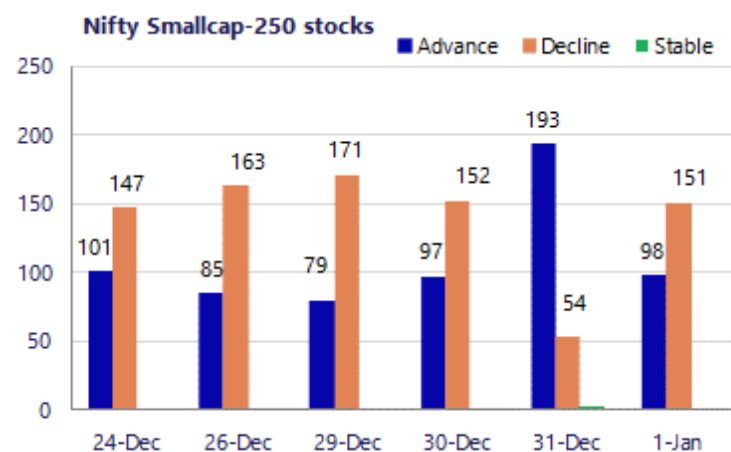
BankNifty also remained lull during the session with a narrow movement witnessed and closed marginally in the green near 59700 zone with bias maintained with an optimistic approach for the coming sessions. As mentioned earlier, the index would need a decisive breakout above the tough resistance barrier of 59800 zone to trigger for a fresh upward move in the coming days having the important support maintained near the 58700 zone which needs to be sustained.

The support for the day is seen at 26000 levels, while the resistance is seen at 26300 levels. BankNifty would have the daily range of 59400-60300 levels.

Sensex	Period	Closing	% Chng	Trend	Reversal	2 Sup	1 Sup	Pivot	1 Res	2 Res
Nifty	Daily	26146.55	0.06%	2	26092.20	26068	26107	26153	26192	26237
	Weekly	26042.30	0.29%	-3	26141.10	25869	25956	26095	26182	26322
	Monthly	26129.60	-0.28%	3	25829.00	25419	25774	26050	26405	26681
Bank Nifty	Daily	59711.55	0.22%	3	59375.00	59501	59606	59675	59780	59848
	Weekly	59011.35	-0.10%	-2	59690.75	58615	58813	59145	59343	59675
	Monthly	59581.85	-0.29%	3	58708.70	58069	58825	59469	60226	60870
Sensex	Daily	85188.60	-0.04%	2	85118.40	84897	85043	85247	85393	85597
	Weekly	85041.45	0.13%	-2	85480.10	84443	84742	85237	85537	86032
	Monthly	85220.60	-0.57%	3	84363.05	83208	84214	85159	86166	87111

**Gainers - Losers ( Nifty 500 Stocks )**

Gainers				Losers			
Company Name	Last Price	% Gain	Volume	Company Name	Last Price	% Loss	Volume
Ajanta Pharma	2938.4	6.12%	620475	CCL Products	910.35	-3.59%	319255
Adani Total Gas	594.10	4.84%	10982832	AstraZeneca	8777.5	-2.79%	26383
ABSL AMC	843.4	4.74%	500270	Caplin Labs	1,798.90	-2.13%	130317
Adani Power	148.76	4.04%	63986228	Abbott India	28,485.00	-1.86%	3946
Astral Ltd	1,434.90	3.34%	592895	Avenue Supermar	3,716.10	-1.75%	516932
Ashok Leyland	184.88	3.18%	26284254	Asahi India	997.6	-1.71%	62582
APL Apollo	1,970.00	2.93%	1879844	Akums Drugs P	445.9	-1.65%	55314



## Nifty Daily chart with RSI indicator



## BankNifty Daily chart with RSI indicator



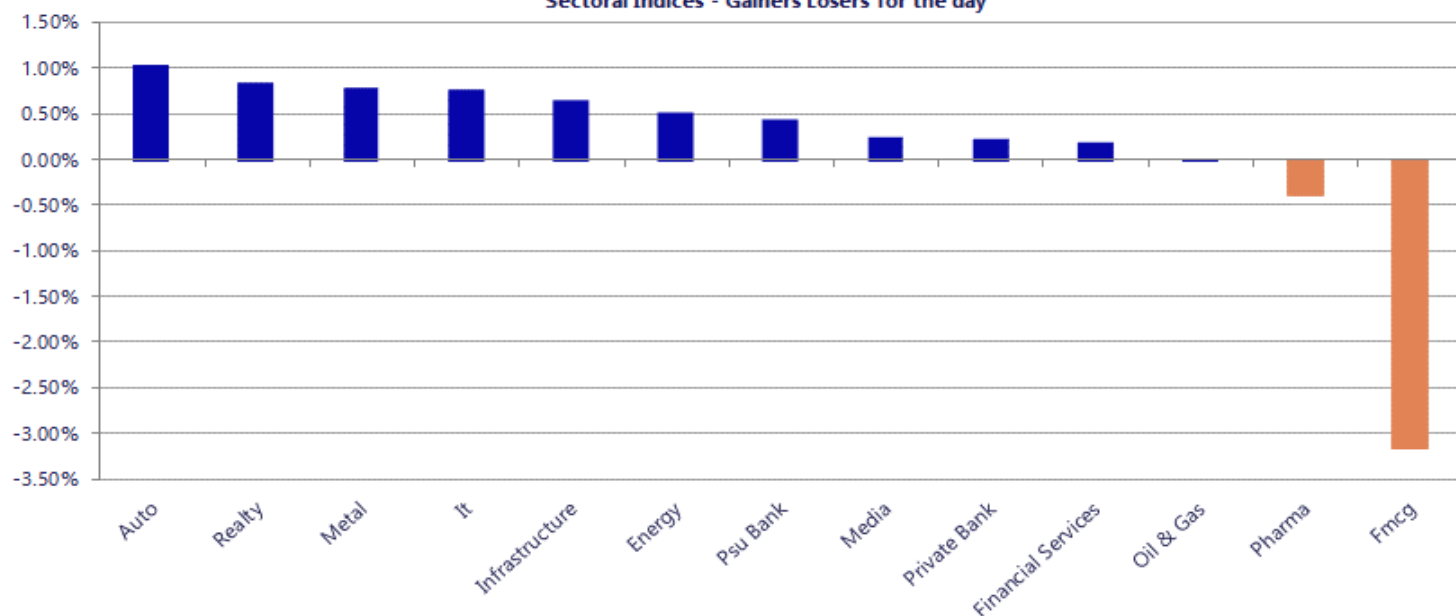
Breakouts - Cross above 200 DMA			
Company Name	LCP	Change %	200 DMA
Hindprakash Ind	141.41	6.38	132.93
Solex Energy	1368	5.62	1295.16
Shanthala	33.35	4.78	31.83
NK Industries	70.31	4.47	67.3
Indef Manufactu	361	4.37	345.89
Orchid Pharma	792.3	4.10	761.08
Thomas Scott	356.6	4.03	342.77
S A Tech Softwa	57.35	3.93	55.18
Sunteck Realty	433	3.83	417.01
Laxmi Goldorna	294.65	3.62	284.35
Usha Financial	42.05	3.55	40.61
India Tourism D	609	3.32	589.42
Gandhi Spl Tube	795	3.29	769.7
Maha Rasht Apex	109	2.81	106.02
Dishman Carboge	256.6	2.76	249.72
Krishna Defence	818	2.48	798.21
Shree Vasu	708.35	2.45	691.43
5paisa Capita	370.8	2.41	362.07

\* Stocks crossing above its Simple Moving Average (200DMA)

Breakdown - Cross below 200 DMA			
Company Name	LCP	Change %	200 DMA
Signet Ind	54.35	-2.76	55.89
Ipru NiftyFMCG	57.5	-2.49	58.97
Dollex Agrotech	38.9	-1.69	39.57
OneSource Spec	1765	-1.48	1791.49
Motilal Oswal	843.3	-1.33	854.67
CSL Fin	295.9	-1.26	299.67
Apcotex Ind	369.25	-1.25	373.92
Sai Silks	152.47	-1.22	154.36
Heritage Foods	451	-1.15	456.26
Foseco India	4877	-0.88	4920.4
Punjab Chemical	1187.1	-0.84	1197.2
AstraZeneca	8803	-0.83	8876.71
Dynacons Sys	1001	-0.77	1008.75
Aarey Drugs	66.5	-0.66	66.94
United Spirits	1405.8	-0.55	1413.6
Nakoda Group	30.23	-0.53	30.39
Anjani Portland	130.49	-0.40	131.02
Powergrid	88.85	-0.39	89.2

\* Stocks crossing below its Simple Moving Average (200DMA)

Sectoral Indices - Gainers Losers for the day



Stocks witnessing a volume surge as compared to their 5 day average

Watch out for the stocks that have seen a huge spurt in its share price over the last three days

Volume Shockers - NSE					
Company name	LCP	% Chg	Volume	Avg Vol *	% Chg
Kross	204.35	10.37	1838832	15087	12088
Westlife Food	537.25	-4.41	154389	2249	6765
Piccadily Agro	603.5	6.65	741576	11690	6244
Sunteck Realty	434.4	9.66	426259	6971	6015
Atul Auto	473	7.71	172413	4037	4170
Dodla	1244.35	-0.5	100536	2545	3850
Coral India Fin	40.01	0.03	79158	2200	3499
V-Guard Ind	321.25	-1.74	216183	7470	2794
Blue Dart	5660.5	2.52	33411	1198	2690
Godfrey Phillip	2290.45	-17.06	445696	19567	2178
Mangalam Cement	768.45	-0.27	32046	1474	2074
Jupiter Infomed	46	11.65	416865	19658	2021
SPML Infra	190	7.62	184179	8892	1971
Palco Metals	175.65	19.98	113342	5713	1884
Phoenix Mills	1869.6	0.86	136271	7632	1686
Steel Str Wheel	210.05	8.36	160155	9369	1609
Bectors Food	247	7.37	225328	13256	1600
Adani Total Gas	591.6	4.34	983169	59061	1565
Kerala Ayur	325.85	3.2	26344	1649	1497
Manoj Ceramic	92.8	-2.52	106000	7000	1414
Kiri Industries	676.5	-6.81	3103753	214126	1349

Price Shockers - NSE				
Company name	LCP	Prv Close	% Chg	Volume
Hind Aluminium	121.7	83.85	45.14	251610
Palco Metals	175.65	122.05	43.92	113342
Jupiter Infomed	46	34.4	33.72	416865
El Forge	17.34	13.11	32.27	152813
Aerpace Ind.	31.59	24.87	27.02	1301363
Starsource Mult	137.4	109	26.06	796
NRB Industrial	36.4	29.04	25.34	13210
ORIENT CERATECH	55	43.92	25.23	106323
Howard Hotels	27.5	22	25	16870
Garnet Construc	69.96	56.62	23.56	53596
Silver Touch Te	1113	902.55	23.32	19113
Kiduja India	26	21.15	22.93	5902
Waa Solar	68.3	55.62	22.8	212000
Sovereign Diam	24.78	20.31	22.01	6011
Kings Infra	124.95	102.75	21.61	35236
Nagpur Power	169.6	141.14	20.16	90969
Entero Health	1138.55	949.8	19.87	21916
KPIGREEN	484.2	404	19.85	508636
Colinz Labs	51.26	42.88	19.54	1587
HS India	14.1	11.8	19.49	568
Royal Cushion	20.18	16.91	19.34	392



Nifty 50 stocks - Summary Details											
Symbol	LTP	Chng	% Chng	Volume (lacs)	Turnover (crs.)	52w High	Diff with 52w H	52w Low	Diff with 52w L	30 days % chng	365 days % chng
NIFTY 50	26146.55	16.95	0.06%	4256.00	23452.77	26325.80	0.68%	21743.65	20.25%	-0.28%	10.51%
ADANIENT	2254.40	14.70	0.66%	10.45	236.82	2616.50	13.84%	1967.52	14.58%	-1.78%	-13.60%
ADANIPTS	1478.30	8.50	0.58%	9.81	145.55	1549.00	4.56%	1010.75	46.26%	-3.11%	20.62%
APOLLOHOSP	7116.00	73.50	1.04%	0.82	58.08	8099.50	12.14%	6001.00	18.58%	-3.99%	-3.72%
ASIANPAINT	2756.00	-13.50	-0.49%	3.28	90.72	2985.70	7.69%	2124.75	29.71%	-3.65%	21.03%
AXISBANK	1273.60	4.20	0.33%	20.22	257.52	1304.00	2.33%	933.50	36.43%	-0.80%	18.64%
BAJAJ-AUTO	9585.00	242.00	2.59%	3.07	291.07	9585.00	0.00%	7089.35	35.20%	2.97%	6.41%
BAJAJFINSV	2037.50	-2.40	-0.12%	2.71	55.14	2195.00	7.18%	1560.00	30.61%	-2.58%	29.38%
BAJFINANCE	975.60	-11.20	-1.13%	71.19	694.47	1102.50	11.51%	679.20	43.64%	-4.89%	-85.67%
BEL	397.85	-1.75	-0.44%	60.84	241.30	436.00	8.75%	240.25	65.60%	-2.95%	40.26%
BHARTIARTL	2111.40	5.80	0.28%	20.98	443.63	2174.50	2.90%	1559.50	35.39%	0.19%	32.69%
CIPLA	1502.00	-9.30	-0.62%	2.28	34.25	1673.00	10.22%	1335.00	12.51%	-1.31%	-0.66%
COALINDIA	400.30	1.30	0.33%	31.60	126.60	417.25	4.06%	349.25	14.62%	6.07%	5.58%
DRREDDY	1252.00	-19.40	-1.53%	5.54	69.38	1405.90	10.95%	1020.00	22.75%	1.00%	-7.66%
EICHERMOT	7349.00	36.50	0.50%	1.55	113.79	7374.50	0.35%	4646.00	58.18%	3.67%	50.59%
ETERNAL	283.55	5.50	1.98%	134.26	380.28	368.45	23.04%	194.80	45.56%	-7.35%	#VALUE!
GRASIM	2851.70	22.70	0.80%	4.50	127.65	2977.80	4.23%	2276.95	25.24%	3.27%	15.78%
HCLTECH	1632.00	8.70	0.54%	7.74	126.62	2012.20	18.89%	1302.75	25.27%	-0.06%	-15.85%
HDFCBANK	991.15	-0.05	-0.01%	71.32	707.40	1020.50	2.88%	812.15	22.04%	-1.63%	-44.25%
HDFCLIFE	750.85	1.00	0.13%	8.20	61.49	820.75	8.52%	584.30	28.50%	-1.89%	21.45%
HINDALCO	894.30	7.60	0.86%	25.66	229.01	895.95	0.18%	546.45	63.66%	9.69%	47.51%
HINDUNILVR	2323.00	7.10	0.31%	7.59	175.50	2750.00	15.53%	2136.00	8.75%	-6.11%	-1.18%
ICICIBANK	1337.60	-5.30	-0.39%	41.78	560.01	1500.00	10.83%	1186.00	12.78%	-3.31%	3.73%
INDIGO	5109.00	49.50	0.98%	7.45	381.52	6232.50	18.03%	3945.00	29.51%	-14.27%	10.05%
INFY	1629.50	14.10	0.87%	36.58	596.54	1982.80	17.82%	1307.00	24.67%	3.54%	-15.25%
ITC	363.95	-39.05	-9.69%	2826.19	10590.02	491.00	25.88%	362.70	0.34%	-0.31%	-15.51%
JIOFIN	295.60	0.65	0.22%	36.92	109.12	338.60	12.70%	198.65	48.80%	-3.67%	-3.69%
JSWSTEEL	1170.00	5.20	0.45%	11.74	137.21	1223.90	4.40%	880.00	32.95%	0.39%	29.57%
KOTAKBANK	2217.00	15.90	0.72%	13.47	297.59	2301.90	3.69%	1723.75	28.61%	3.61%	26.45%
LT	4136.00	52.50	1.29%	13.61	562.21	4146.80	0.26%	2965.30	39.48%	0.34%	14.10%
M&M	3755.00	45.80	1.23%	14.98	562.77	3795.00	1.05%	2425.00	54.85%	-1.28%	23.52%
MARUTI	16713.00	16.00	0.10%	1.71	286.36	16818.00	0.62%	10750.60	55.46%	5.01%	54.62%
MAXHEALTH	1047.70	2.60	0.25%	12.19	127.77	1314.30	20.28%	940.05	11.45%	-10.12%	-10.07%
NESTLEIND	1292.00	4.00	0.31%	9.32	120.52	1311.60	1.49%	1055.00	22.46%	2.13%	-40.37%
NTPC	336.10	6.55	1.99%	103.56	346.52	371.45	9.52%	292.80	14.79%	0.95%	-0.56%
ONGC	237.90	-2.48	-1.03%	58.41	139.51	273.50	13.02%	205.00	16.05%	-1.18%	3.32%
POWERGRID	267.55	2.95	1.11%	42.98	114.34	322.00	16.91%	247.30	8.19%	-1.98%	-13.97%
RELIANCE	1572.90	2.50	0.16%	64.08	1011.55	1592.50	1.23%	1114.85	41.09%	0.19%	29.71%
SBILIFE	2045.90	11.00	0.54%	2.36	47.99	2086.60	1.95%	1372.55	49.06%	3.50%	44.95%
SBIN	984.60	2.40	0.24%	43.28	426.09	999.00	1.44%	680.00	44.79%	0.33%	24.60%
SHRIRAMFIN	1020.00	23.80	2.39%	42.88	432.82	1025.60	0.55%	493.35	106.75%	16.97%	-65.87%
SUNPHARMA	1725.00	5.30	0.31%	8.77	150.80	1910.00	9.69%	1548.00	11.43%	-6.11%	-8.72%
TATACONSUM	1173.30	-18.70	-1.57%	9.47	111.80	1202.80	2.45%	893.10	31.37%	1.67%	31.93%
TMPV	368.55	1.20	0.33%	72.13	265.40	810.00	54.50%	337.70	9.14%	2.96%	#VALUE!
TATASTEEL	181.74	1.66	0.92%	215.02	389.87	186.94	2.78%	122.62	48.21%	7.22%	31.56%
TCS	3225.00	18.80	0.59%	12.56	404.29	4322.95	25.40%	2866.60	12.50%	2.19%	-22.91%
TECHM	1607.00	16.10	1.01%	5.66	90.76	1736.40	7.45%	1209.40	32.88%	4.85%	-8.61%
TITAN	4049.40	-2.10	-0.05%	4.45	180.19	4068.00	0.46%	2925.00	38.44%	3.68%	24.38%
TRENT	4295.00	16.00	0.37%	3.75	160.53	7493.05	42.68%	3930.10	9.28%	0.67%	-38.47%
ULTRACEMCO	11903.00	119.00	1.01%	0.72	85.34	13097.00	9.12%	10047.85	18.46%	1.59%	4.39%
WIPRO	267.30	4.00	1.52%	36.39	97.06	324.60	17.65%	228.00	17.24%	5.51%	-13.31%

## Disclaimer / Disclosures

### ANALYST CERTIFICATION

I, Mrs. Vaishali Parekh B.com, Research Analyst, author and the name subscribed to this report, hereby certify that all of the views expressed in this research report accurately reflect our views about the subject issuer(s) or securities. We also certify that no part of our compensation was, is, or will be directly or indirectly related to the specific recommendation(s) or view(s) in this report.

Terms & conditions and other disclosures:

Prabhudas Lilladher Pvt. Ltd, Mumbai, India (hereinafter referred to as "PL") is engaged in the business of Stock Broking, Portfolio Manager, Depository Participant and distribution for third party financial products. PL is a subsidiary of Prabhudas Lilladher Advisory Services Pvt Ltd. which has its various subsidiaries engaged in business of commodity broking, investment banking, financial services (margin funding) and distribution of third party financial/other products, details in respect of which are available at [www.plindia.com](http://www.plindia.com)

This document has been prepared by the Research Division of PL and is meant for use by the recipient only as information and is not for circulation. This document is not to be reported or copied or made available to others without prior permission of PL. It should not be considered or taken as an offer to sell or a solicitation to buy or sell any security.

The information contained in this report has been obtained from sources that are considered to be reliable. However, PL has not independently verified the accuracy or completeness of the same. Neither PL nor any of its affiliates, its directors or its employees accepts any responsibility of whatsoever nature for the information, statements and opinion given, made available or expressed herein or for any omission therein.

Recipients of this report should be aware that past performance is not necessarily a guide to future performance and value of investments can go down as well. The suitability or otherwise of any investments will depend upon the recipient's particular circumstances and, in case of doubt, advice should be sought from an independent expert/advisor.

Either PL or its affiliates or its directors or its employees or its representatives or its clients or their relatives may have position(s), make market, act as principal or engage in transactions of securities of companies referred to in this report and they may have used the research material prior to publication.

PL may from time to time solicit or perform investment banking or other services for any company mentioned in this document.

PL is registered as Research Analyst under Securities and Exchange Board of India (Research Analysts) Regulations, 2014 PL submits that no material disciplinary action has been taken on us by any Regulatory Authority impacting Equity Research Analysis activities.

PL or its research analysts or its associates or his relatives do not have any financial interest in the subject company.

PL or its research analysts or its associates or his relatives do not have actual/beneficial ownership of one per cent or more securities of the subject company at the end of the month immediately preceding the date of publication of the research report.

PL or its research analysts or its associates or his relatives do not have any material conflict of interest at the time of publication of the research report.

PL or its associates might have received compensation from the subject company in the past twelve months.

PL or its associates might have managed or co-managed public offering of securities for the subject company in the past twelve months or mandated by the subject company for any other assignment in the past twelve months.

PL or its associates might have received any compensation for investment banking or merchant banking or brokerage services from the subject company in the past twelve months.

PL or its associates might have received any compensation for products or services other than investment banking or merchant banking or brokerage services from the subject company in the past twelve months PL or its associates might have received any compensation or other benefits from the subject company or third party in connection with the research report.

PL encourages independence in research report preparation and strives to minimize conflict in preparation of research report. PL or its analysts did not receive any compensation or other benefits from the subject Company or third party in connection with the preparation of the research report. PL or its Research Analysts do not have any material conflict of interest at the time of publication of this report.

It is confirmed that Mrs. Vaishali Parekh B.com, Research Analyst of this report has not received any compensation from the companies mentioned in the report in the preceding twelve months compensation of our Research Analysts is not based on any specific merchant banking, investment banking or brokerage service transactions.

The Research analysts for this report certifies that all of the views expressed in this report accurately reflect his or her personal views about the subject company or companies and its or their securities, and no part of his or her compensation was, is or will be, directly or indirectly related to specific recommendations or views expressed in this report.

The research analysts for this report has not served as an officer, director or employee of the subject company PL or its research analysts have not engaged in market making activity for the subject company

Our sales people, traders, and other professionals or affiliates may provide oral or written market commentary or trading strategies to our clients that reflect opinions that are contrary to the opinions expressed herein, and our proprietary trading and investing businesses may make investment decisions that are inconsistent with the recommendations expressed herein. In reviewing these materials, you should be aware that any or all of the foregoing, among other things, may give rise to real or potential conflicts of interest.

PL and its associates, their directors and employees may (a) from time to time, have a long or short position in, and buy or sell the securities of the subject company or (b) be engaged in any other transaction involving such securities and earn brokerage or other compensation or act as a market maker in the financial instruments of the subject company or act as an advisor or lender/borrower to the subject company or may have any other potential conflict of interests with respect to any recommendation and other related information and opinions.

**Regd. Office:** 3<sup>rd</sup> Floor, Sadhana House, 570, P. B. Marg, Behind Mahindra Tower, Worli, Mumbai - 400 018, India.