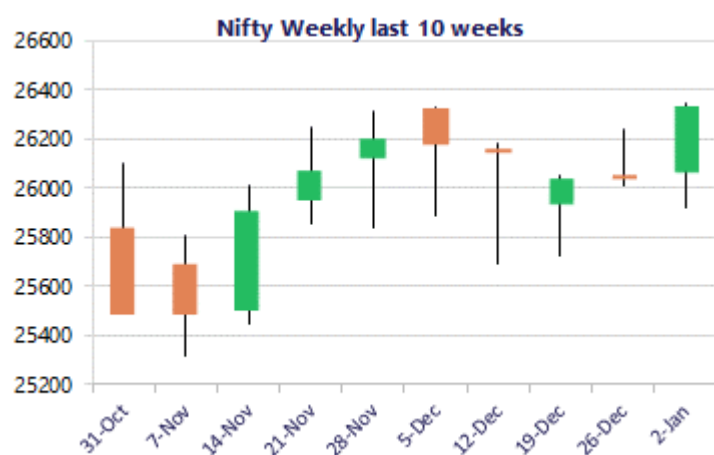
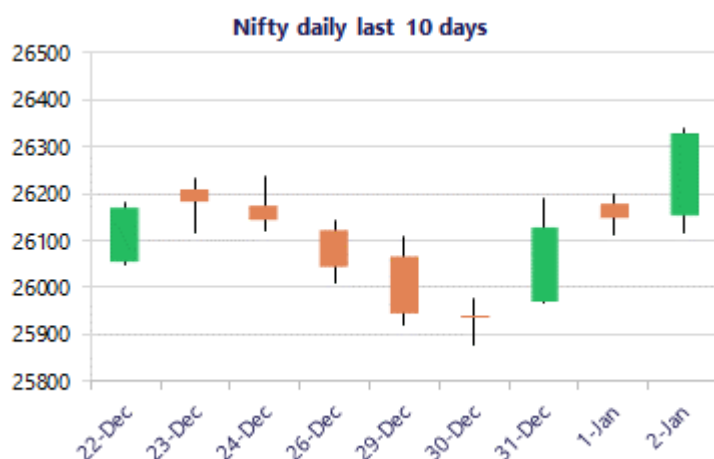


Date: 05th January 2026

* Sensex 85762.01 + 573.41

* Nifty 26328.55 + 182.00

* Bank Nifty 60150.95 + 439.40



*Blue candle → Close rate > Open rate * Red candle → Close rate < Open rate

Market Preview

Nifty scales record High; bias remains optimistic

Nifty with a robust move scales record high of 26340 level with a strong closing session anticipating for further rise in the coming days. BankNifty after a long wait surged to hit the record high level of 60200 zone with bias getting stronger and expecting for further fresh upward move in the coming days. The market breadth was strong with the advance decline indicating a ratio of 5:2 at close.

Market Forecast

Nifty daily range 26200-26500

Nifty, once again indicated a strong bullish candle formation on the daily chart to scale record high of 26340 level during the intraday session and closed on a strong optimistic all time high at 26328 zone to anticipate for further rise in the coming days. With the robust move, the index has gained strength with active participation from the broader markets also supporting, with anticipation of another fresh move expected before the budget session. The index would have the important support positioned near the 50EMA level of 25900 zone which needs to be respected to maintain the overall bias intact.

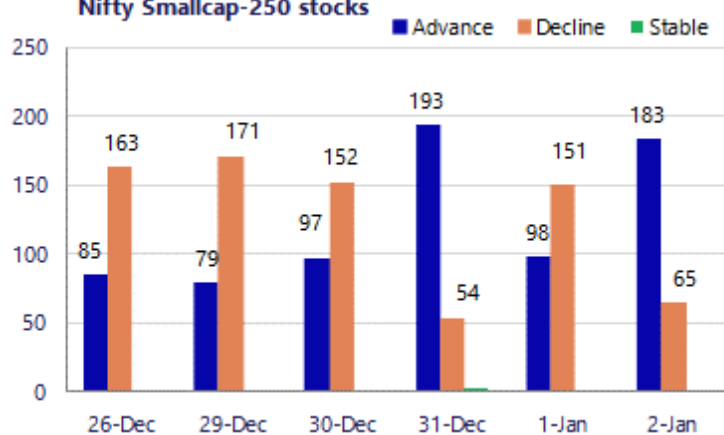
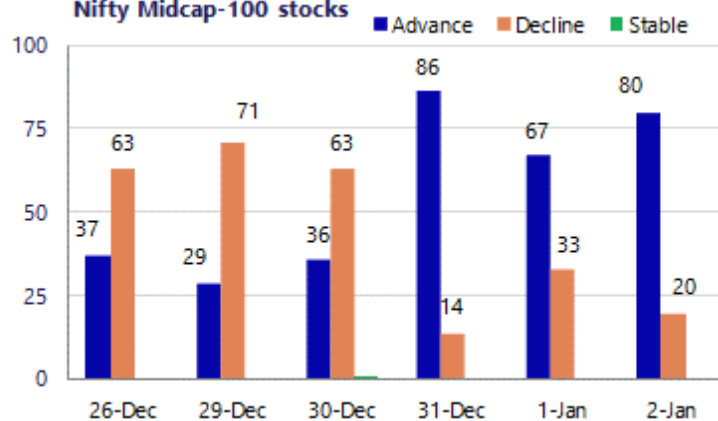
BankNifty finally staged a strong positive move to breach above the previous resistance hurdle of 60000 zone and scale all time high level to enter a new territory with the trend getting strong anticipating for fresh upward move in the coming days having targets of 61400 and 63000 levels expected. As mentioned earlier, the index shall maintain the important support positioned near the 50EMA level at 58700 zone which needs to be sustained.

The support for the day is seen at 26200 levels, while the resistance is seen at 26500 levels. BankNifty would have the daily range of 59800-60700 levels.

Sensex	Period	Closing	% Chng	Trend	Reversal	2 Sup	1 Sup	Pivot	1 Res	2 Res
Nifty	Daily	26328.55	0.70%	3	26149.30	26041	26185	26262	26406	26484
	Weekly	26328.55	1.10%	-3	26141.10	25722	26025	26182	26485	26642
	Monthly	26129.60	-0.28%	3	25829.00	25419	25774	26050	26405	26681
Bank Nifty	Daily	60150.95	0.74%	4	59601.10	59565	59858	60031	60324	60496
	Weekly	60150.95	1.93%	-2	59690.75	58241	59196	59695	60650	61149
	Monthly	59581.85	-0.29%	3	58708.70	58069	58825	59469	60226	60870
Sensex	Daily	85762.01	0.67%	3	85235.00	84804	85283	85548	86027	86291
	Weekly	85762.01	0.85%	1	85636.35	84008	84885	85348	86226	86689
	Monthly	85220.60	-0.57%	3	84363.05	83208	84214	85159	86166	87111

Gainers - Losers (Nifty 500 Stocks)

Gainers				Losers			
Company Name	Last Price	% Gain	Volume	Company Name	Last Price	% Loss	Volume
Bosch	39420	9.08%	185980	Authum Invest	3,045.80	-2.88%	104107
Coal India	427.90	6.85%	35066729	AstraZeneca	8601.5	-2.01%	34235
Anant Raj	584.05	5.71%	5444030	APL Apollo	1,931.90	-1.93%	755911
CESC	175.37	4.95%	4483652	Bajaj Holdings	11,181.00	-1.42%	58883
Dabur India	522.60	4.53%	5340382	Abbott India	28,125.00	-1.26%	10290
Aadhar Housing	500.55	3.98%	999137	ABSL AMC	833.6	-1.16%	408968
Craftsman	8,013.50	3.77%	88540	Adani Total Gas	587.6	-1.09%	809150

Nifty Smallcap-250 stocks

Nifty Midcap-100 stocks


Nifty Daily chart with RSI indicator



BankNifty Daily chart with RSI indicator



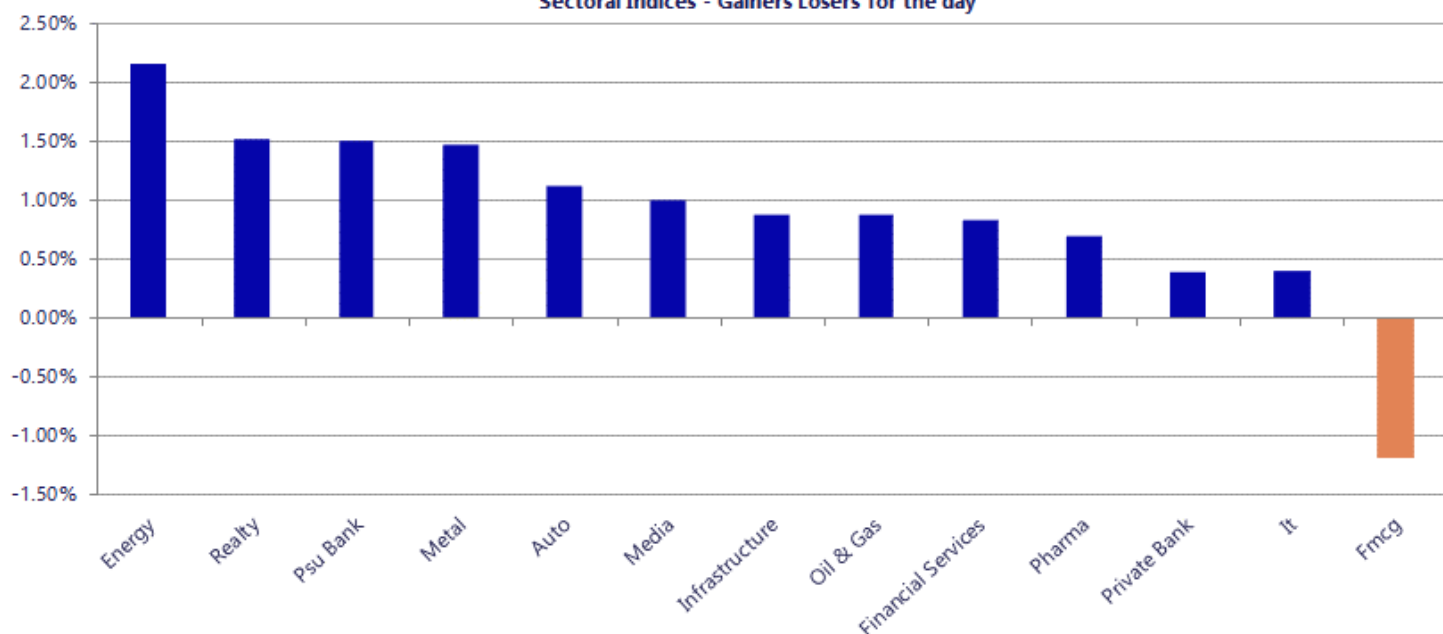
Breakouts - Cross above 200 DMA			
Company Name	LCP	Change %	200 DMA
Anant Raj	582	4.49	556.98
Dabur India	522.2	4.11	501.59
Federal-Mogul	489.75	3.74	472.11
Felix Industrie	178.5	3.71	172.11
JBM Auto	666.65	3.21	645.94
Manorama Indust	1392.4	3.12	1350.29
Jubilant Ing.	725.85	2.65	707.08
Kavveri Defence	73.89	2.43	72.14
Munjal Auto Ind	83.5	2.43	81.52
Central Bank	38.65	2.25	37.8
Heritage Foods	465.3	1.90	456.63
Motilal Oswal	867.6	1.36	855.93
GROWWRAIL	36.03	1.04	35.66
Aries Agro	345.1	0.88	342.09
Indian Railway	128.56	0.84	127.49
HDFC Nifty 250	168.81	0.74	167.57
Gujarat Gas	436.5	0.69	433.53
Coffee Day	36.41	0.69	36.16

* Stocks crossing above its Simple Moving Average (200DMA)

Breakdown - Cross below 200 DMA			
Company Name	LCP	Change %	200 DMA
Giriraj Civil D	246.05	-3.95	256.17
Eurotex	14.19	-2.94	14.62
Arman Financial	1515.8	-2.05	1547.46
Maha Rasht Apex	104.5	-1.43	106.02
Aarey Drugs	66.13	-1.43	67.09
Astra Microwave	961.15	-1.37	974.51
Indo Count	279.25	-1.34	283.03
Dr Lal PathLab	1473	-0.90	1486.34
Dynacons Sys	1000.5	-0.82	1008.79
Atul Auto	464.55	-0.67	467.69
Centum Electron	2269.4	-0.38	2278.02
EID Parry	1009.1	-0.25	1011.59
Effwa Infra & R	225	-0.17	225.38
Gujarat Fluoro	3649.3	-0.06	3651.44

* Stocks crossing below its Simple Moving Average (200DMA)

Sectoral Indices - Gainers Losers for the day



Stocks witnessing a volume surge as compared to their 5 day average

Watch out for the stocks that have seen a huge spurt in its share price over the last three days

Volume Shockers - NSE					
Company name	LCP	% Chg	Volume	Avg Vol *	% Chg
Apeejay Park	135.4	0.97	1181844	5621	20926
MAS Financial S	326.3	2	506157	3100	16230
Sapphire Foods	252.95	-3.21	400463	3102	12811
Happy Forgings	1190	2.88	71611	1514	4629
Viceroy Hotels	137.1	2.28	360664	7752	4552
Kirloskar Pneum	1059.55	1.99	102169	2323	4299
Navneet	146.9	3.16	47519	1293	3574
Craftsman	8012.45	3.65	35385	1098	3122
Sambhvt Steel	97.08	1.62	811761	26091	3011
Devyani	148.6	0.44	2881146	98445	2827
Raaj Medisafe	77.18	4.99	32400	1160	2693
AI Champdany	36.4	-2.49	131485	4724	2683
RTS Power Corp	156.9	20	61022	2398	2445
Jay BharatMarut	100.39	9.81	138592	5670	2344
Tourism Finance	55.14	-19.99	9059510	395502	2191
Onix Solar	570.5	5	140428	8310	1590
Indian Hume	421.4	4.28	19203	1179	1528
SJVN	83.19	11.32	5483251	354090	1449
Mindteck	219	7.09	33422	2194	1424
Omax Autos	108.65	8.43	17529	1151	1422
Torrent Power	1399.55	5.43	116675	7801	1396

Price Shockers - NSE					
Company name	LCP	Prv Close	% Chg	Volume	
Hind Aluminium	133.85	100.62	33.03	76713	
Palco Metals	158.1	122	29.59	90568	
Shalimar Paints	75.8	60.01	26.31	75836	
Sita Enterprise	184.75	148	24.83	7627	
Jupiter Infomed	41.9	34.34	22.02	94214	
Silver Touch Te	1225	1006.15	21.75	89655	
Veranda Learn	215.85	177.55	21.57	38398	
Bazel Internati	71.9	59.64	20.56	23113	
RTS Power Corp	156.9	131.45	19.36	61022	
Starsource Mult	130.1	109	19.36	2515	
Transformers	337.05	283.65	18.83	2864763	
IFB Agro	1590	1349.4	17.83	11186	
Panyam Cements	141.45	121	16.9	41	
Aerpace Ind.	30.63	26.22	16.82	890816	
KPT Industries	690.1	591.55	16.66	14460	
VMS Industries	30.9	26.54	16.43	96853	
Omega Int Tech	452.7	391.1	15.75	2381	
Indokem	690.6	596.65	15.75	15853	
Onix Solar	570.5	492.9	15.74	140428	
IMEC Services	380.55	328.8	15.74	3172	
Kinetic Trust	47.95	41.43	15.74	237	

Nifty 50 stocks - Summary Details											
Symbol	LTP	Chng	% Chng	Volume (lacs)	Turnover (crs.)	52w High	Diff with 52w H	52w Low	Diff with 52w L	30 days % chng	365 days % chng
NIFTY 50	26328.55	182.00	0.70%	3575.15	23767.96	26340.00	0.04%	21743.65	21.09%	-0.11%	10.58%
ADANIENT	2278.00	18.00	0.80%	7.15	162.59	2616.50	12.94%	1967.52	15.78%	-0.09%	-10.62%
ADANIPTS	1490.00	8.90	0.60%	12.51	186.35	1549.00	3.81%	1010.75	47.42%	-3.23%	20.31%
APOLLOHOSP	7123.50	12.00	0.17%	3.53	251.17	8099.50	12.05%	6001.00	18.71%	-2.42%	-2.53%
ASIANPAINT	2771.60	19.60	0.71%	5.09	141.12	2985.70	7.17%	2124.75	30.44%	-4.03%	20.63%
AXISBANK	1269.00	-5.40	-0.42%	58.61	745.25	1304.00	2.68%	933.50	35.94%	-0.10%	19.70%
BAJAJ-AUTO	9499.00	-59.00	-0.62%	7.34	697.47	9633.00	1.39%	7089.35	33.99%	5.08%	8.63%
BAJAJFINSV	2039.50	2.50	0.12%	8.94	182.33	2195.00	7.08%	1565.00	30.32%	-2.15%	29.90%
BAJFINANCE	990.55	17.45	1.79%	62.06	612.17	1102.50	10.15%	680.60	45.54%	-4.70%	-85.74%
BEL	403.30	5.60	1.41%	109.48	441.08	436.00	7.50%	240.25	67.87%	-4.69%	35.66%
BHARTIARTL	2108.50	-1.90	-0.09%	29.27	616.98	2174.50	3.04%	1559.50	35.20%	0.99%	32.92%
CIPLA	1510.00	9.10	0.61%	9.64	145.49	1673.00	9.74%	1335.00	13.11%	-1.46%	-1.84%
COALINDIA	429.10	28.65	7.15%	350.85	1475.78	429.50	0.09%	349.25	22.86%	5.48%	4.24%
DRREDDY	1257.60	4.20	0.34%	15.91	198.30	1405.90	10.55%	1020.00	23.29%	-0.53%	-9.73%
EICHERMOT	7344.00	-4.00	-0.05%	2.27	167.00	7382.50	0.52%	4646.00	58.07%	3.12%	52.39%
ETERNAL	284.10	0.30	0.11%	136.24	388.82	368.45	22.89%	194.80	45.84%	-5.87%	#VALUE!
GRASIM	2865.00	13.30	0.47%	6.99	199.84	2977.80	3.79%	2276.95	25.83%	4.40%	16.74%
HCLTECH	1640.00	5.50	0.34%	9.51	155.56	2012.20	18.50%	1302.75	25.89%	-0.51%	-14.75%
HDFCBANK	1000.25	9.10	0.92%	117.51	1173.25	1020.50	1.98%	812.15	23.16%	-1.09%	-44.09%
HDFCLIFE	753.20	3.10	0.41%	14.57	110.02	820.75	8.23%	584.30	28.91%	-2.17%	21.56%
HINDALCO	926.50	31.55	3.53%	53.57	491.33	927.30	0.09%	546.45	69.55%	10.38%	48.55%
HINDUNILVR	2348.50	25.50	1.10%	9.73	228.08	2750.00	14.60%	2136.00	9.95%	-5.74%	-0.17%
ICICIBANK	1355.10	17.10	1.28%	82.26	1109.68	1500.00	9.66%	1186.00	14.26%	-3.75%	4.40%
INDIGO	5105.00	-5.50	-0.11%	4.64	237.25	6232.50	18.09%	3945.00	29.40%	-11.80%	12.21%
INFY	1642.10	12.30	0.75%	25.24	413.65	1982.80	17.18%	1307.00	25.64%	4.21%	-13.31%
ITC	350.10	-13.75	-3.78%	1187.83	4152.65	491.00	28.70%	345.25	1.40%	-9.99%	-24.77%
JIOFIN	301.85	6.15	2.08%	106.02	319.00	338.60	10.85%	198.65	51.95%	-2.97%	-1.00%
JSWSTEEL	1178.10	6.60	0.56%	9.03	106.42	1223.90	3.74%	880.00	33.88%	0.27%	29.95%
KOTAKBANK	2189.90	-27.90	-1.26%	24.47	541.21	2301.90	4.87%	1723.75	27.04%	3.27%	24.17%
LT	4164.70	24.30	0.59%	9.84	408.82	4172.70	0.19%	2965.30	40.45%	1.65%	14.77%
M&M	3801.00	40.00	1.06%	14.78	561.35	3812.00	0.29%	2425.00	56.74%	0.52%	25.07%
MARUTI	16970.00	262.00	1.57%	3.89	658.54	16999.00	0.17%	10800.20	57.13%	3.80%	53.87%
MAXHEALTH	1061.10	11.70	1.11%	9.29	98.20	1314.30	19.27%	940.05	12.88%	-6.75%	-6.98%
NESTLEIND	1280.40	-14.60	-1.13%	7.36	94.61	1311.60	2.38%	1055.00	21.36%	2.73%	-40.32%
NTPC	351.65	15.35	4.56%	231.27	802.93	371.45	5.33%	292.80	20.10%	2.81%	0.88%
ONGC	242.00	4.06	1.71%	59.25	142.76	273.50	11.52%	205.00	18.05%	-2.81%	-0.55%
POWERGRID	271.15	4.35	1.63%	133.48	360.64	322.00	15.79%	247.30	9.64%	-1.06%	-13.57%
RELIANCE	1593.00	17.40	1.10%	66.02	1049.16	1594.60	0.10%	1114.85	42.89%	0.61%	29.63%
SBILIFE	2062.20	21.80	1.07%	4.72	97.49	2086.60	1.17%	1372.55	50.25%	3.49%	46.75%
SBIN	1005.65	20.90	2.12%	73.57	730.76	1009.50	0.38%	680.00	47.89%	1.20%	23.88%
SHRIRAMFIN	1010.10	-9.60	-0.94%	52.64	534.11	1025.60	1.51%	493.35	104.74%	19.75%	-64.71%
SUNPHARMA	1729.90	8.80	0.51%	9.74	168.15	1902.95	9.09%	1548.00	11.75%	-4.77%	-8.76%
TATACONSUM	1171.80	-5.10	-0.43%	9.55	112.18	1202.80	2.58%	911.00	28.63%	1.13%	28.67%
TMPV	370.35	2.80	0.76%	70.76	262.31	810.00	54.28%	337.70	9.67%	1.03%	#VALUE!
TATASTEEL	182.80	0.91	0.50%	230.04	420.79	186.94	2.21%	122.62	49.08%	7.86%	31.76%
TCS	3245.70	18.30	0.57%	11.84	383.81	4322.95	24.92%	2866.60	13.22%	3.00%	-21.18%
TECHM	1612.20	4.50	0.28%	6.37	102.69	1736.40	7.15%	1209.40	33.31%	5.11%	-5.77%
TITAN	4050.30	1.00	0.02%	6.60	266.52	4068.00	0.44%	2925.00	38.47%	3.96%	24.47%
TRENT	4400.00	102.60	2.39%	8.95	393.57	7493.05	41.28%	3930.10	11.96%	1.93%	-39.67%
ULTRACEMCO	11920.00	19.00	0.16%	2.06	245.15	13097.00	8.99%	10047.85	18.63%	2.05%	4.15%
WIPRO	269.00	1.65	0.62%	82.86	223.58	324.60	17.13%	228.00	17.98%	6.82%	-11.43%

Disclaimer / Disclosures

ANALYST CERTIFICATION

I, Mrs. Vaishali Parekh B.com, Research Analyst, author and the name subscribed to this report, hereby certify that all of the views expressed in this research report accurately reflect our views about the subject issuer(s) or securities. We also certify that no part of our compensation was, is, or will be directly or indirectly related to the specific recommendation(s) or view(s) in this report.

Terms & conditions and other disclosures:

Prabhudas Lilladher Pvt. Ltd, Mumbai, India (hereinafter referred to as "PL") is engaged in the business of Stock Broking, Portfolio Manager, Depository Participant and distribution for third party financial products. PL is a subsidiary of Prabhudas Lilladher Advisory Services Pvt Ltd. which has its various subsidiaries engaged in business of commodity broking, investment banking, financial services (margin funding) and distribution of third party financial/other products, details in respect of which are available at www.plindia.com

This document has been prepared by the Research Division of PL and is meant for use by the recipient only as information and is not for circulation. This document is not to be reported or copied or made available to others without prior permission of PL. It should not be considered or taken as an offer to sell or a solicitation to buy or sell any security.

The information contained in this report has been obtained from sources that are considered to be reliable. However, PL has not independently verified the accuracy or completeness of the same. Neither PL nor any of its affiliates, its directors or its employees accepts any responsibility of whatsoever nature for the information, statements and opinion given, made available or expressed herein or for any omission therein.

Recipients of this report should be aware that past performance is not necessarily a guide to future performance and value of investments can go down as well. The suitability or otherwise of any investments will depend upon the recipient's particular circumstances and, in case of doubt, advice should be sought from an independent expert/advisor.

Either PL or its affiliates or its directors or its employees or its representatives or its clients or their relatives may have position(s), make market, act as principal or engage in transactions of securities of companies referred to in this report and they may have used the research material prior to publication.

PL may from time to time solicit or perform investment banking or other services for any company mentioned in this document.

PL is registered as Research Analyst under Securities and Exchange Board of India (Research Analysts) Regulations, 2014 PL submits that no material disciplinary action has been taken on us by any Regulatory Authority impacting Equity Research Analysis activities.

PL or its research analysts or its associates or his relatives do not have any financial interest in the subject company.

PL or its research analysts or its associates or his relatives do not have actual/beneficial ownership of one per cent or more securities of the subject company at the end of the month immediately preceding the date of publication of the research report.

PL or its research analysts or its associates or his relatives do not have any material conflict of interest at the time of publication of the research report.

PL or its associates might have received compensation from the subject company in the past twelve months.

PL or its associates might have managed or co-managed public offering of securities for the subject company in the past twelve months or mandated by the subject company for any other assignment in the past twelve months.

PL or its associates might have received any compensation for investment banking or merchant banking or brokerage services from the subject company in the past twelve months.

PL or its associates might have received any compensation for products or services other than investment banking or merchant banking or brokerage services from the subject company in the past twelve months PL or its associates might have received any compensation or other benefits from the subject company or third party in connection with the research report.

PL encourages independence in research report preparation and strives to minimize conflict in preparation of research report. PL or its analysts did not receive any compensation or other benefits from the subject Company or third party in connection with the preparation of the research report. PL or its Research Analysts do not have any material conflict of interest at the time of publication of this report.

It is confirmed that Mrs. Vaishali Parekh B.com, Research Analyst of this report has not received any compensation from the companies mentioned in the report in the preceding twelve months compensation of our Research Analysts is not based on any specific merchant banking, investment banking or brokerage service transactions.

The Research analysts for this report certifies that all of the views expressed in this report accurately reflect his or her personal views about the subject company or companies and its or their securities, and no part of his or her compensation was, is or will be, directly or indirectly related to specific recommendations or views expressed in this report.

The research analysts for this report has not served as an officer, director or employee of the subject company PL or its research analysts have not engaged in market making activity for the subject company

Our sales people, traders, and other professionals or affiliates may provide oral or written market commentary or trading strategies to our clients that reflect opinions that are contrary to the opinions expressed herein, and our proprietary trading and investing businesses may make investment decisions that are inconsistent with the recommendations expressed herein. In reviewing these materials, you should be aware that any or all of the foregoing, among other things, may give rise to real or potential conflicts of interest.

PL and its associates, their directors and employees may (a) from time to time, have a long or short position in, and buy or sell the securities of the subject company or (b) be engaged in any other transaction involving such securities and earn brokerage or other compensation or act as a market maker in the financial instruments of the subject company or act as an advisor or lender/borrower to the subject company or may have any other potential conflict of interests with respect to any recommendation and other related information and opinions.

Regd. Office: 3rd Floor, Sadhana House, 570, P. B. Marg, Behind Mahindra Tower, Worli, Mumbai - 400 018, India.