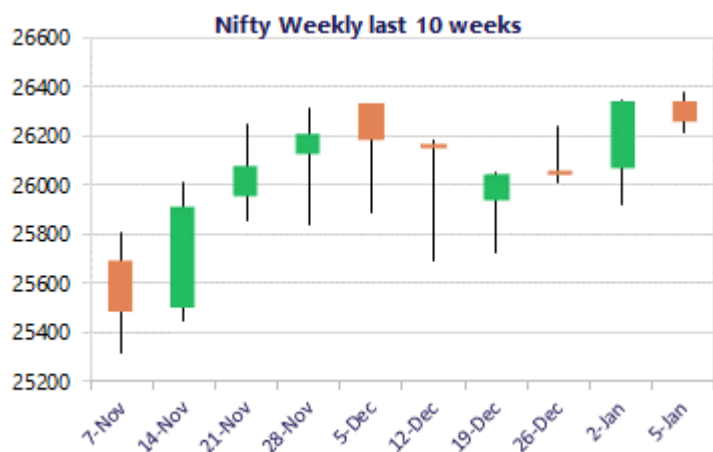
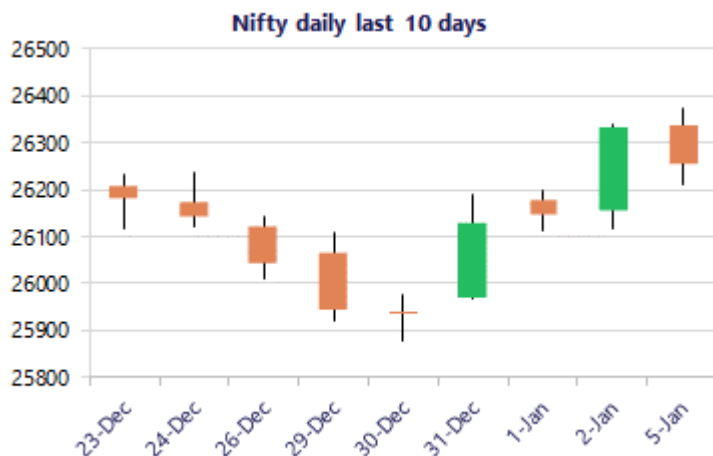


Date: 06th January 2026

* Sensex 85439.62 - 322.39

* Nifty 26250.30 - 78.25

* Bank Nifty 60044.20 - 106.75



*Blue candle → Close rate > Open rate * Red candle → Close rate < Open rate

Market Preview

Nifty resists near 26350 zone; bias remains optimistic

Nifty after the previous strong session witnessed some resistance near the 26350 zone and with some profit booking seen ended the session near 26250 level with overall bias maintained intact. BankNifty erased the gains witnessed in the morning session and closed near the 60000 level with the optimistic approach still sustained. The market breadth was weak with the advance decline indicating a ratio of 3:5 at close.

Market Forecast

Nifty daily range 26150-26400

Nifty, once again witnessed resistance near the 26350 zone and amid some volatility slipped down to end near the 26250 level with bias maintained intact and overall, the optimistic approach is sustained with near term target of 26500 level expected in the coming sessions. As mentioned earlier, the index would have the important support positioned near the 50EMA level of 25900 zone with the near-term support positioned near the 26150 zone which needs to be sustained to maintain the overall bias intact.

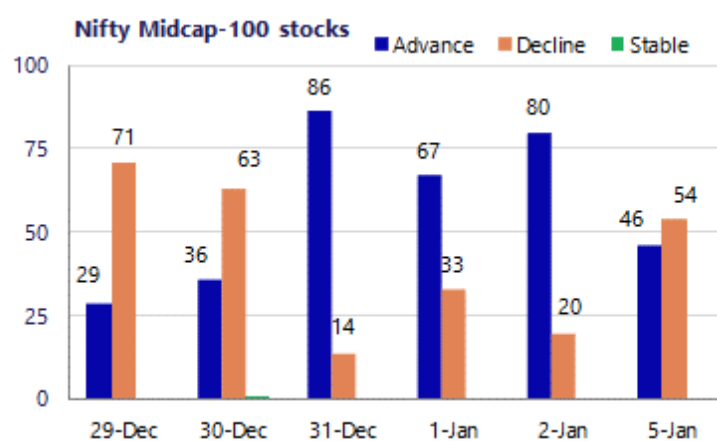
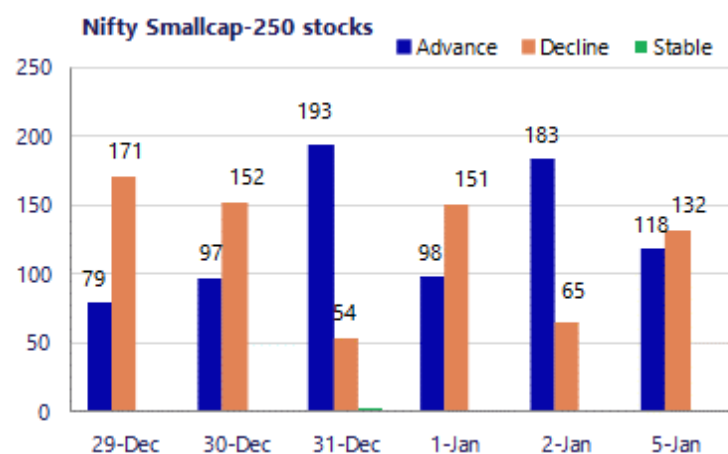
BankNifty after opening on a positive note witnessed resistance near the 60400 level and with some profit booking visible slipped down to end the session near 60000 zone with bias and sentiment maintained positive. As mentioned earlier, the index shall have the important support positioned near the 50EMA level at 58700 zone which needs to be sustained and as of now, once the near-term support at around 59500 level is sustained, we can expect for further continuation of the upward move.

The support for the day is seen at 26150 levels, while the resistance is seen at 26400 levels. BankNifty would have the daily range of 59700-60500 levels.

Sensex	Period	Closing	% Chng	Trend	Reversal	2 Sup	1 Sup	Pivot	1 Res	2 Res
Nifty	Daily	26250.30	-0.30%	4	26162.10	26115	26183	26278	26346	26441
	Weekly	26328.55	1.10%	-3	26141.10	25722	26025	26182	26485	26642
	Monthly	26129.60	-0.28%	3	25829.00	25419	25774	26050	26405	26681
Bank Nifty	Daily	60044.20	-0.18%	5	59720.10	59536	59790	60114	60368	60691
	Weekly	60150.95	1.93%	-2	59690.75	58241	59196	59695	60650	61149
	Monthly	59581.85	-0.29%	3	58708.70	58069	58825	59469	60226	60870
Sensex	Daily	85439.62	-0.38%	4	85237.95	84978	85209	85546	85777	86114
	Weekly	85762.01	0.85%	1	85636.35	84008	84885	85348	86226	86689
	Monthly	85220.60	-0.57%	3	84363.05	83208	84214	85159	86166	87111

Gainers - Losers (Nifty 500 Stocks)

Gainers				Losers			
Company Name	Last Price	% Gain	Volume	Company Name	Last Price	% Loss	Volume
Amber Enterpris	6712	3.54%	339408	Devyani Int	140.04	-5.42%	7010017
Brainbees Solu	299.25	3.26%	1143372	Cummins	4309.8	-3.84%	491909
Bharat Dynamics	1541.8	3.13%	3328503	Chalet Hotels	874.60	-3.09%	191166
CG Consumer	259.75	3.03%	5740030	Action Const	952.45	-2.49%	171783
Astral Ltd	1,492.80	2.71%	735095	Deepak Nitrite	1,670.00	-2.40%	128640
Bharat Elec	413.80	2.64%	26091870	Bikaji Foods	718.05	-2.39%	171638
Capri Global	190.05	2.61%	1446066	Gravita India	1817.8	-2.30%	143307



Nifty Daily chart with RSI indicator



BankNifty Daily chart with RSI indicator



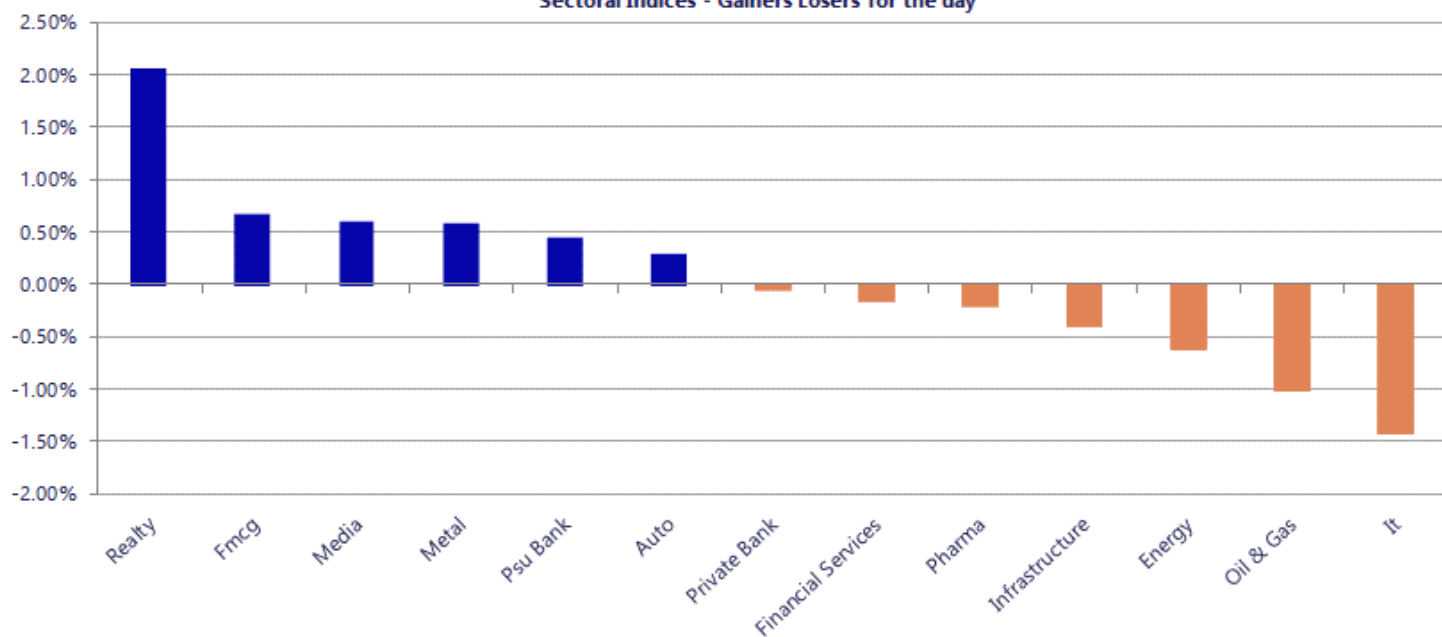
Breakouts - Cross above 200 DMA			
Company Name	LCP	Change %	200 DMA
Tourism Finance	66.28	18.31	56.02
GNA Axles	342.6	7.81	317.78
Lokesh Machines	190.15	4.53	181.91
Rockingdeals	232	4.05	222.97
LLOYDS ENTER	68.18	3.92	65.61
Blue Star	1864.9	2.56	1818.28
Astra Microwave	993.4	1.76	976.21
Groww Defence	79.59	1.69	78.27
UltraTechCement	12097	1.52	11915.9
JSW Energy	520.15	1.48	512.55
Chola Fin Hold	1916.2	1.45	1888.84
Prudent Advisor	2649	1.39	2612.59
Paras Defence	705.7	1.36	696.2
Ideaforge Tech	485.05	1.29	478.89
Hemisphere	140.97	1.28	139.19
MO Defence	87.02	1.26	85.94
Medplus Health	833.2	1.01	824.9
Dr Lal PathLab	1502.3	1.00	1487.4

* Stocks crossing above its Simple Moving Average (200DMA)

Breakdown - Cross below 200 DMA			
Company Name	LCP	Change %	200 DMA
Omax Autos	103.3	-4.07	107.68
Diensten Tech	140	-4.04	145.9
Creative Graphi	187.35	-3.93	195.01
Solex Energy	1252	-3.77	1301.1
Sahasra Electro	287	-3.74	298.14
Bikaji Foods	715.6	-2.42	733.32
Coffee Day	35.35	-2.38	36.21
RBM Infracon	420	-2.08	428.9
Bhageria Indu	179.36	-2.06	183.14
Ugro Capital	172	-2.04	175.59
Veranda Learnin	212	-2.03	216.39
Kavveri Defence	70.9	-1.90	72.27
Gulf Oil Lubric	1186.6	-1.88	1209.35
Arihant Capital	88.7	-1.84	90.36
Hexaware Tech	737.95	-1.81	751.54
Spandana Sphoor	261.1	-1.79	265.87
Swiggy	378.55	-1.76	385.32
Ramky Infra	544.5	-1.53	552.96

* Stocks crossing below its Simple Moving Average (200DMA)

Sectoral Indices - Gainers Losers for the day



Stocks witnessing a volume surge as compared to their 5 day average

Watch out for the stocks that have seen a huge spurt in its share price over the last three days

Volume Shockers - NSE					
Company name	LCP	% Chg	Volume	Avg Vol *	% Chg
Algoquant Fin	66.35	10.79	3764441	32218	11584
Tube Investment	2531	-2.63	321340	3488	9114
CSB Bank	570.4	18.29	940364	13434	6900
Bhagiradh Chem	214.85	7.18	670766	10721	6156
Netweb	3280.05	8.43	784865	13602	5670
Advance Agro	131.15	7.99	293771	6188	4647
Gandhar Oil	166.75	9.81	4884337	112602	4238
ICICI Prudentia	684	0.74	915389	26767	3320
Nazara	286.9	0.6	629379	19281	3164
SBFC Finance	102	-1.07	3160969	97125	3155
Sapphire Foods	234	-7.4	83604	3102	2595
Elecon Eng	496.75	-0.89	1036955	38556	2589
Steelcast	213.15	0.9	42474	2095	1928
Sigma Solve	62	4.55	27384	1373	1894
Biofil Chem	34.75	3.45	26361	1353	1848
CreditAccess Gr	1326	2.98	283153	14933	1796
JTEKT India	159.25	7.49	105722	5848	1708
United Van Hors	219.35	19.99	45356	2526	1696
MM Forgings	425.3	7.75	210938	12403	1601
Ginni Filaments	42.85	2.91	68706	4347	1481
Timken	3083	1.08	29733	1982	1400

Price Shockers - NSE				
Company name	LCP	Prv Close	% Chg	Volume
Sovereign Diam	32.7	20.65	58.35	31145
United Van Hors	219.35	164.05	33.71	45356
Hind Aluminium	140.5	110.68	26.94	34440
Silver Touch Te	1347.6	1094.5	23.12	90038
Ola Electric	43.98	36.28	21.22	31701351
Starsource Mult	137.3	114.7	19.7	1829
Shalimar Paints	73.52	61.7	19.16	25718
The Byke Hosp	59.31	50.29	17.94	36966
RTS Power Corp	154	131.15	17.42	75656
MM Forgings	425.3	362.4	17.36	210938
Rajkot Invest	48.2	41.2	16.99	31
SJVN	87.43	74.78	16.92	8593895
Lokesh Machines	188.8	162.75	16.01	47074
Swan Defence	1687.95	1458.15	15.76	46880
Onix Solar	599	517.5	15.75	4261
Indokem	725.1	626.45	15.75	7288
EASTINDIA	106.6	92.1	15.74	3826
Omega Int Tech	475.3	410.65	15.74	1349
Trade Wings	489.35	422.8	15.74	105
Stellant Sec	426.15	368.2	15.74	197
GSL Securities	53.55	46.27	15.73	1482

Nifty 50 stocks - Summary Details											
Symbol	LTP	Chng	% Chng	Volume (lacs)	Turnover (crs.)	52w High	Diff with 52w H	52w Low	Diff with 52w L	30 days % chng	365 days % chng
NIFTY 50	26250.30	-78.25	-0.30%	3387.51	25741.27	26373.20	0.47%	21743.65	20.73%	1.14%	10.89%
ADANIENT	2279.00	-0.80	-0.04%	6.96	159.16	2616.50	12.90%	1967.52	15.83%	1.79%	-10.77%
ADANIPTS	1491.50	2.00	0.13%	7.90	117.58	1549.00	3.71%	1010.75	47.56%	-1.88%	22.22%
APOLLOHOSP	7086.50	-43.00	-0.60%	3.50	248.32	8099.50	12.51%	6001.00	18.09%	-1.55%	-3.26%
ASIANPAINT	2814.00	41.40	1.49%	8.67	243.75	2985.70	5.75%	2124.75	32.44%	-6.15%	20.30%
AXISBANK	1286.50	19.60	1.55%	61.77	793.65	1304.00	1.34%	933.50	37.81%	0.71%	18.20%
BAJAJ-AUTO	9499.00	-3.50	-0.04%	3.04	290.73	9684.00	1.91%	7089.35	33.99%	4.59%	8.72%
BAJAJFINSV	2040.00	1.60	0.08%	6.56	133.72	2195.00	7.06%	1576.40	29.41%	-1.33%	29.31%
BAJFINANCE	977.65	-12.80	-1.29%	105.64	1037.34	1102.50	11.32%	697.10	40.25%	-3.42%	-85.72%
BEL	413.35	10.20	2.53%	260.97	1079.62	436.00	5.19%	240.25	72.05%	-2.40%	37.17%
BHARTIARTL	2101.60	-4.70	-0.22%	26.43	556.30	2174.50	3.35%	1559.50	34.76%	0.11%	32.00%
CIPLA	1520.10	8.50	0.56%	15.32	232.56	1673.00	9.14%	1335.00	13.87%	-0.33%	-1.14%
COALINDIA	426.85	-1.05	-0.25%	172.56	739.28	436.70	2.26%	349.25	22.22%	12.92%	10.74%
DRREDDY	1247.10	-9.00	-0.72%	11.84	148.51	1405.90	11.30%	1020.00	22.26%	-1.50%	-8.25%
EICHERMOT	7494.00	159.50	2.17%	4.27	318.64	7514.50	0.27%	4646.00	61.30%	3.12%	50.13%
ETERNAL	281.90	-2.25	-0.79%	193.28	543.83	368.45	23.49%	194.80	44.71%	-5.46%	#VALUE!
GRASIM	2844.40	-12.00	-0.42%	8.62	247.09	2977.80	4.48%	2276.95	24.92%	4.44%	16.96%
HCLTECH	1605.00	-35.20	-2.15%	32.46	520.24	2012.20	20.24%	1302.75	23.20%	0.29%	-14.21%
HDFCBANK	978.50	-23.10	-2.31%	276.45	2721.15	1020.50	4.12%	812.15	20.48%	1.19%	-43.82%
HDFCLIFE	760.60	5.75	0.76%	13.48	102.54	820.75	7.33%	584.30	30.17%	-0.55%	22.30%
HINDALCO	931.00	5.30	0.57%	52.78	491.88	937.90	0.74%	546.45	70.37%	14.73%	56.12%
HINDUNILVR	2385.50	37.50	1.60%	13.44	319.67	2750.00	13.25%	2136.00	11.68%	-5.24%	1.12%
ICICIBANK	1372.00	16.60	1.22%	69.21	947.44	1500.00	8.53%	1186.00	15.68%	-1.28%	5.59%
INDIGO	5100.00	-6.00	-0.12%	6.34	323.64	6232.50	18.17%	3945.00	29.28%	-10.38%	11.10%
INFY	1604.10	-36.30	-2.21%	59.18	948.47	1982.80	19.10%	1307.00	22.73%	5.09%	-12.86%
ITC	349.60	-0.45	-0.13%	483.50	1695.13	491.00	28.80%	345.25	1.26%	-12.69%	-27.67%
JIOFIN	300.05	-1.65	-0.55%	69.70	209.39	338.60	11.39%	198.65	51.04%	-1.03%	-0.90%
JSWSTEEL	1187.00	6.30	0.53%	10.18	120.73	1223.90	3.01%	880.00	34.89%	1.61%	30.40%
KOTAKBANK	2192.30	-2.80	-0.13%	21.83	478.84	2301.90	4.76%	1723.75	27.18%	2.46%	22.74%
LT	4149.00	-14.40	-0.35%	11.67	486.00	4195.00	1.10%	2965.30	39.92%	3.30%	13.52%
M&M	3790.00	-12.40	-0.33%	15.74	599.58	3839.90	1.30%	2425.00	56.29%	2.31%	23.37%
MARUTI	17170.00	210.00	1.24%	3.06	525.55	17370.00	1.15%	11059.45	55.25%	4.44%	51.32%
MAXHEALTH	1051.10	-11.50	-1.08%	15.23	160.52	1314.30	20.03%	940.05	11.81%	-4.91%	-6.76%
NESTLEIND	1315.00	35.30	2.76%	23.97	314.35	1320.00	0.38%	1055.00	24.64%	1.65%	-41.01%
NTPC	350.50	-1.60	-0.45%	182.48	640.99	371.45	5.64%	292.80	19.71%	7.15%	5.53%
ONGC	238.05	-3.41	-1.41%	211.98	507.64	273.50	12.96%	205.00	16.12%	-0.85%	1.90%
POWERGRID	271.00	0.05	0.02%	115.26	312.18	322.00	15.84%	247.30	9.58%	1.31%	-12.71%
RELIANCE	1577.00	-15.30	-0.96%	87.05	1383.48	1611.80	2.16%	1114.85	41.45%	2.97%	30.38%
SBILIFE	2079.80	12.40	0.60%	7.88	164.08	2094.90	0.72%	1372.55	51.53%	4.34%	47.63%
SBIN	1005.40	6.45	0.65%	112.59	1134.44	1015.50	0.99%	680.00	47.85%	3.27%	25.94%
SHRIRAMFIN	1002.50	-7.85	-0.78%	46.03	461.81	1025.60	2.25%	493.35	103.20%	19.79%	-65.38%
SUNPHARMA	1725.70	-2.30	-0.13%	14.17	245.88	1896.00	8.98%	1548.00	11.48%	-3.97%	-8.57%
TATACONSUM	1183.00	12.30	1.05%	15.22	179.80	1202.80	1.65%	913.05	29.57%	0.73%	27.21%
TMPV	373.55	3.20	0.86%	95.91	357.00	810.00	53.88%	337.70	10.62%	2.38%	#VALUE!
TATASTEEL	185.73	2.85	1.56%	306.44	567.98	186.94	0.65%	122.62	51.47%	9.00%	33.74%
TCS	3213.00	-37.70	-1.16%	23.42	754.06	4322.95	25.68%	2866.60	12.08%	3.67%	-20.95%
TECHM	1598.80	-13.20	-0.82%	9.08	144.79	1736.40	7.92%	1209.40	32.20%	4.90%	-5.39%
TITAN	4076.00	24.30	0.60%	6.29	256.66	4094.00	0.44%	2925.00	39.35%	4.27%	24.52%
TRENT	4417.00	7.40	0.17%	5.10	225.28	7493.05	41.05%	3930.10	12.39%	4.33%	-37.61%
ULTRACEMCO	12059.00	160.00	1.34%	3.03	365.17	13097.00	7.93%	10047.85	20.02%	2.00%	3.95%
WIPRO	263.00	-6.00	-2.23%	70.06	184.84	324.60	18.98%	228.00	15.35%	7.53%	-10.42%

Disclaimer / Disclosures

ANALYST CERTIFICATION

I, Mrs. Vaishali Parekh B.com, Research Analyst, author and the name subscribed to this report, hereby certify that all of the views expressed in this research report accurately reflect our views about the subject issuer(s) or securities. We also certify that no part of our compensation was, is, or will be directly or indirectly related to the specific recommendation(s) or view(s) in this report.

Terms & conditions and other disclosures:

Prabhudas Lilladher Pvt. Ltd, Mumbai, India (hereinafter referred to as "PL") is engaged in the business of Stock Broking, Portfolio Manager, Depository Participant and distribution for third party financial products. PL is a subsidiary of Prabhudas Lilladher Advisory Services Pvt Ltd. which has its various subsidiaries engaged in business of commodity broking, investment banking, financial services (margin funding) and distribution of third party financial/other products, details in respect of which are available at www.plindia.com

This document has been prepared by the Research Division of PL and is meant for use by the recipient only as information and is not for circulation. This document is not to be reported or copied or made available to others without prior permission of PL. It should not be considered or taken as an offer to sell or a solicitation to buy or sell any security.

The information contained in this report has been obtained from sources that are considered to be reliable. However, PL has not independently verified the accuracy or completeness of the same. Neither PL nor any of its affiliates, its directors or its employees accepts any responsibility of whatsoever nature for the information, statements and opinion given, made available or expressed herein or for any omission therein.

Recipients of this report should be aware that past performance is not necessarily a guide to future performance and value of investments can go down as well. The suitability or otherwise of any investments will depend upon the recipient's particular circumstances and, in case of doubt, advice should be sought from an independent expert/advisor.

Either PL or its affiliates or its directors or its employees or its representatives or its clients or their relatives may have position(s), make market, act as principal or engage in transactions of securities of companies referred to in this report and they may have used the research material prior to publication.

PL may from time to time solicit or perform investment banking or other services for any company mentioned in this document.

PL is registered as Research Analyst under Securities and Exchange Board of India (Research Analysts) Regulations, 2014 PL submits that no material disciplinary action has been taken on us by any Regulatory Authority impacting Equity Research Analysis activities.

PL or its research analysts or its associates or his relatives do not have any financial interest in the subject company.

PL or its research analysts or its associates or his relatives do not have actual/beneficial ownership of one per cent or more securities of the subject company at the end of the month immediately preceding the date of publication of the research report.

PL or its research analysts or its associates or his relatives do not have any material conflict of interest at the time of publication of the research report.

PL or its associates might have received compensation from the subject company in the past twelve months.

PL or its associates might have managed or co-managed public offering of securities for the subject company in the past twelve months or mandated by the subject company for any other assignment in the past twelve months.

PL or its associates might have received any compensation for investment banking or merchant banking or brokerage services from the subject company in the past twelve months.

PL or its associates might have received any compensation for products or services other than investment banking or merchant banking or brokerage services from the subject company in the past twelve months PL or its associates might have received any compensation or other benefits from the subject company or third party in connection with the research report.

PL encourages independence in research report preparation and strives to minimize conflict in preparation of research report. PL or its analysts did not receive any compensation or other benefits from the subject Company or third party in connection with the preparation of the research report. PL or its Research Analysts do not have any material conflict of interest at the time of publication of this report.

It is confirmed that Mrs. Vaishali Parekh B.com, Research Analyst of this report has not received any compensation from the companies mentioned in the report in the preceding twelve months compensation of our Research Analysts is not based on any specific merchant banking, investment banking or brokerage service transactions.

The Research analysts for this report certifies that all of the views expressed in this report accurately reflect his or her personal views about the subject company or companies and its or their securities, and no part of his or her compensation was, is or will be, directly or indirectly related to specific recommendations or views expressed in this report.

The research analysts for this report has not served as an officer, director or employee of the subject company PL or its research analysts have not engaged in market making activity for the subject company

Our sales people, traders, and other professionals or affiliates may provide oral or written market commentary or trading strategies to our clients that reflect opinions that are contrary to the opinions expressed herein, and our proprietary trading and investing businesses may make investment decisions that are inconsistent with the recommendations expressed herein. In reviewing these materials, you should be aware that any or all of the foregoing, among other things, may give rise to real or potential conflicts of interest.

PL and its associates, their directors and employees may (a) from time to time, have a long or short position in, and buy or sell the securities of the subject company or (b) be engaged in any other transaction involving such securities and earn brokerage or other compensation or act as a market maker in the financial instruments of the subject company or act as an advisor or lender/borrower to the subject company or may have any other potential conflict of interests with respect to any recommendation and other related information and opinions.

Regd. Office: 3rd Floor, Sadhana House, 570, P. B. Marg, Behind Mahindra Tower, Worli, Mumbai - 400 018, India.