

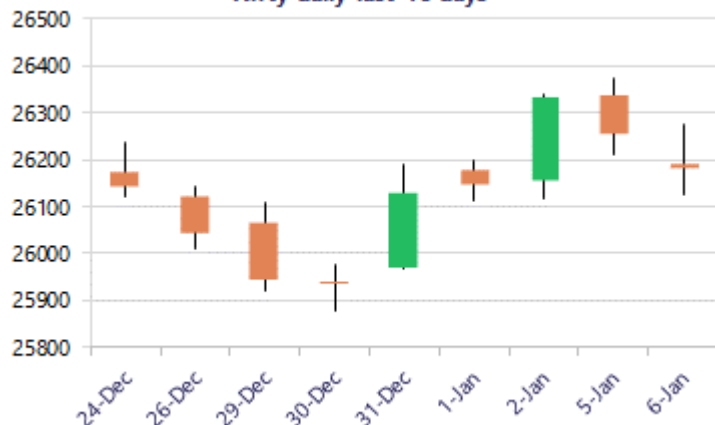
Date: 07th January 2026

* Sensex 85063.34 - 376.28

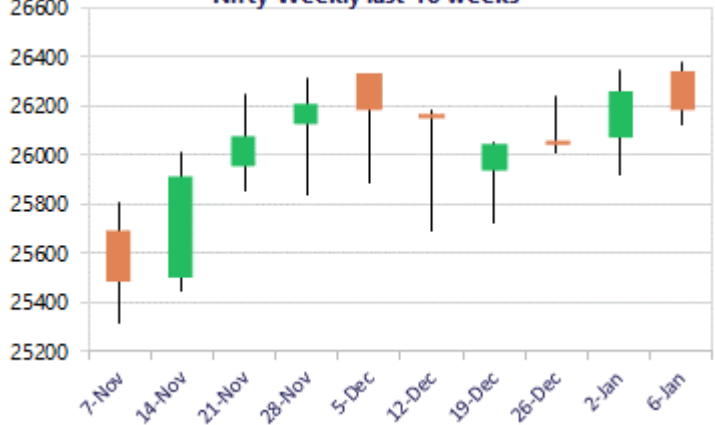
* Nifty 26178.70 - 71.60

* Bank Nifty 60118.40 + 74.20

Nifty daily last 10 days



Nifty Weekly last 10 weeks



*Blue candle → Close rate > Open rate * Red candle → Close rate < Open rate

Market Preview

Nifty drags; RIL witnesses sharp fall

Nifty witnessed further slide to end in the red on the back of Reliance losing sharply with almost 5% fall during the session. BankNifty closed near the 60100 level with a marginal gain with bias and sentiment maintained intact. The market breadth was weak with the advance decline indicating a ratio of 2:3 at close.

Market Forecast

Nifty daily range 26100-26300

Nifty, witnessing a gap down opening in the morning session had a weak start and thereafter gradually slipped as the day progressed ahead with Reliance as the major laggard which dragged the index along with ITC and HDFC Bank which ended in the red. The index has still overall maintained the positive bias as of now with the major support positioned near the 50EMA level of 25900 zone which needs to be sustained to maintain the overall bias intact, whereas on the upside the target of 26500 level is expected once a revival is established.

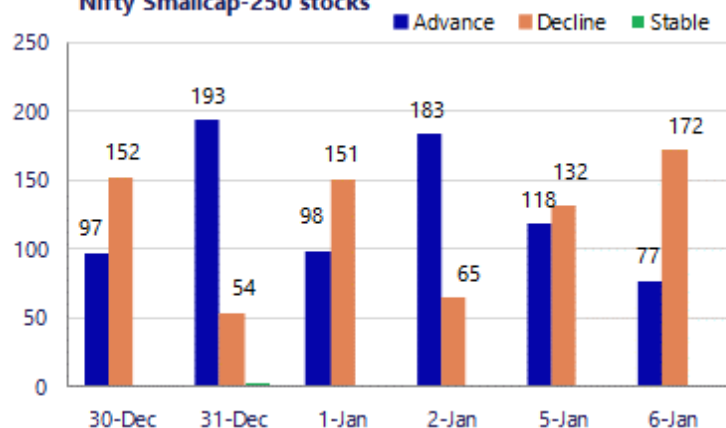
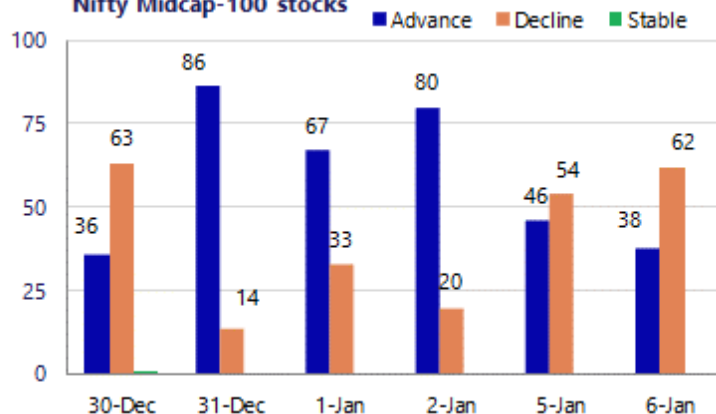
BankNifty witnessed a rangebound session with resistance near the 60300 zone and with a sluggish move ended near the 60100 zone with a marginal gain having the bias maintained intact. As mentioned earlier, the index shall have the important support positioned near the 50EMA level at 58700 zone which needs to be sustained and as of now, once the near-term support at around 59500 level is sustained, we can expect for further continuation of the upward move.

The support for the day is seen at 26100 levels, while the resistance is seen at 26300 levels. BankNifty would have the daily range of 59800-60500 levels.

Sensex	Period	Closing	% Chng	Trend	Reversal	2 Sup	1 Sup	Pivot	1 Res	2 Res
Nifty	Daily	26178.70	-0.27%	5	26171.95	26043	26111	26192	26260	26342
	Weekly	26328.55	1.10%	-3	26141.10	25722	26025	26182	26485	26642
	Monthly	26129.60	-0.28%	3	25829.00	25419	25774	26050	26405	26681
Bank Nifty	Daily	60118.40	0.12%	6	59877.20	59629	59874	60089	60334	60550
	Weekly	60150.95	1.93%	-2	59690.75	58241	59196	59695	60650	61149
	Monthly	59581.85	-0.29%	3	58708.70	58069	58825	59469	60226	60870
Sensex	Daily	85063.34	-0.44%	-1	85236.95	84623	84843	85120	85341	85618
	Weekly	85762.01	0.85%	1	85636.35	84008	84885	85348	86226	86689
	Monthly	85220.60	-0.57%	3	84363.05	83208	84214	85159	86166	87111

Gainers - Losers (Nifty 500 Stocks)

Gainers				Losers			
Company Name	Last Price	% Gain	Volume	Company Name	Last Price	% Loss	Volume
CRISIL	4668	5.11%	331557	Cummins	4,130.30	-4.16%	1031184
Apollo Hospital	7,331.00	3.50%	581146	3M India	35020	-3.75%	4644
Apollo Tyres	519.5	2.71%	1957306	Elecon Eng	479.90	-3.55%	448164
Aurobindo Pharm	1,233.00	2.12%	1845647	Brainbees Solu	289.65	-3.21%	3595348
Alkem Lab	5,654.50	1.84%	86105	ACME Solar	231.02	-3.19%	1334586
Aster DM Health	626.50	1.83%	400723	Deepak Nitrite	1621	-2.93%	123122
Bajaj Auto	9,668.00	1.80%	502990	Dixon Technolog	11726	-2.70%	541607

Nifty Smallcap-250 stocks

Nifty Midcap-100 stocks


Nifty Daily chart with RSI indicator



BankNifty Daily chart with RSI indicator



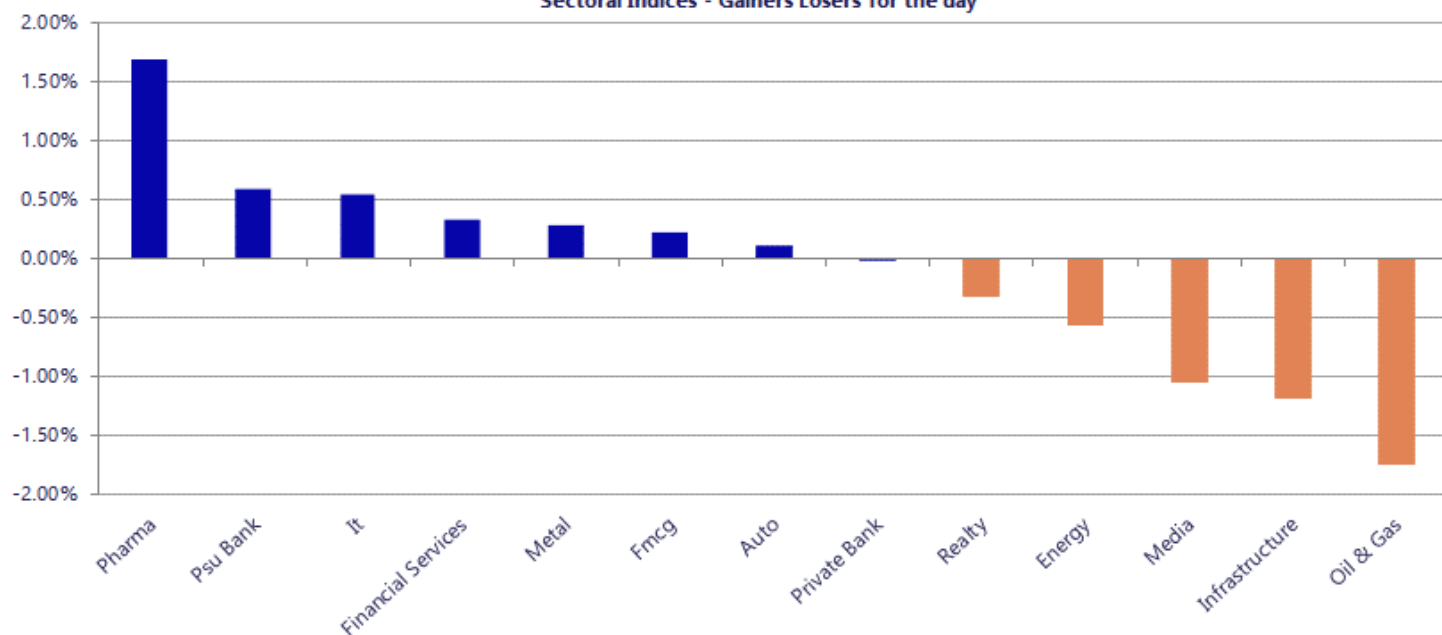
Breakouts - Cross above 200 DMA			
Company Name	LCP	Change %	200 DMA
Mindteck	239	8.68	219.91
Arihant Capital	95.12	5.17	90.44
Indef Manufactu	364.5	4.79	347.84
Tarapur Trans	30.32	4.16	29.11
Fusion Finance	176.98	3.00	171.82
SBI Card	903.75	2.39	882.66
Utssav CZ Gold	225	2.30	219.95
Kavveri Defence	74	2.22	72.39
Petronet LNG	295.35	2.01	289.54
Avalon Technolo	919.55	1.12	909.39
NCL Industries	211.44	1.10	209.14
Manaksia	68.99	1.00	68.31
Cigniti Tech	1633.6	0.97	1617.94
Entero Health	1188.8	0.95	1177.63
ICICI Bank	1410.8	0.81	1399.5
BLAL	210.49	0.72	208.98
Apollo Hospital	7332	0.67	7282.95
Arman Financial	1559.1	0.51	1551.22

* Stocks crossing above its Simple Moving Average (200DMA)

Breakdown - Cross below 200 DMA			
Company Name	LCP	Change %	200 DMA
NK Industries	65.5	-2.85	67.42
Bharat Wire Rop	181.86	-2.67	186.84
JM Financial	143.79	-2.17	146.98
Salona Cotspin	250.05	-2.17	255.59
Sharda Motor	954.25	-2.02	973.9
ICE Make Refrig	773	-2.01	788.83
Aarey Drugs	66.12	-1.88	67.39
Rashtriya Chem	144.13	-1.87	146.87
PB Fintech	1742.4	-1.50	1768.92
Kiri Industries	575	-1.44	583.38
Vishal Mega Mar	131.28	-1.40	133.15
Upsurge Seeds	140	-1.37	141.95
Renaissance	120.9	-1.35	122.56
Nazara	281.5	-1.25	285.07
Diffusion Engin	316.9	-1.24	320.87
HDFC Bank	961.75	-1.24	973.82
Eternal	277.8	-1.22	281.22
Munjal Auto Ind	80.65	-1.22	81.65

* Stocks crossing below its Simple Moving Average (200DMA)

Sectoral Indices - Gainers Losers for the day



Stocks witnessing a volume surge as compared to their 5 day average

Watch out for the stocks that have seen a huge spurt in its share price over the last three days

Volume Shockers - NSE					
Company name	LCP	% Chg	Volume	Avg Vol *	% Chg
Vivimed Labs	12.23	-9.94	783084	5011	15528
Bliss GVS	177.7	10.68	4296437	38956	10929
Indbank Merchan	41.8	19.98	244599	2706	8940
Sapphire Foods	227.55	-2.78	258430	3102	8232
Tube Investment	2547.75	0.75	207722	3488	5856
Indo Euro	14.05	17.38	61871	1198	5064
Hardwyn	19.58	12.72	2139218	45611	4590
Mold-Tek Pack	609.8	0.84	92145	1973	4570
Mindteck	239.25	10.92	416673	9949	4088
India Shelter	820	0.42	312098	7749	3928
Gandhar Oil	171.9	2.75	4094980	112602	3537
Arihant Capital	95	7.31	161545	5712	2728
Manaksia Alumin	39.39	17.41	647735	25151	2475
Netweb	3350.45	2.25	330333	13602	2329
PG Foils	199	11.55	79565	3359	2269
Shankara Buildi	127.8	20	114565	4835	2269
Transcorp Intl	27.61	19.99	40759	1771	2201
CSB Bank	532.1	-5.06	301254	13434	2142
HS India	12.27	-1.92	33748	1576	2042
Modern Eng	33.58	-4.44	37764	1793	2006
Goyal Aluminium	10.39	19.98	1125296	54578	1962

Price Shockers - NSE				
Company name	LCP	Prv Close	% Chg	Volume
United Van Hors	263.2	182.8	43.98	214418
Manaksia Alumin	39.39	29.58	33.16	647735
Godavari Drugs	96.9	76.02	27.47	54169
Tourism Finance	68.06	55.14	23.43	7041443
Sovereign Diam	35.97	29.73	20.99	21574
Mirc Electronic	35.02	28.95	20.97	1550819
Shankara Buildi	127.8	106.15	20.4	114565
Indbank Merchan	41.8	35.03	19.33	244599
GNA Axles	376.5	317.95	18.41	72369
Rajoo Engineers	75.78	64.18	18.07	3344069
Gujarat Natural	106.36	90.23	17.88	413427
Aartech Solonic	56.59	48.9	15.73	16989
Algoquant Fin	69.25	59.89	15.63	660860
Laxmipati Eng.	395.95	348.5	13.62	11500
Bhagiradh Chem	226.7	200.45	13.1	81819
Silver Touch Te	1413.5	1252.25	12.88	40081
HCKK Ventures	32.99	29.35	12.4	593
PG Foils	199	177.35	12.21	79565
Menon Pistons	64.5	57.59	12	64323
Rashi Periphera	401.65	360.8	11.32	48317
Sharda Ispat	193	173.65	11.14	1168

Nifty 50 stocks - Summary Details											
Symbol	LTP	Chng	% Chng	Volume (lacs)	Turnover (crs.)	52w High	Diff with 52w H	52w Low	Diff with 52w L	30 days % chng	365 days % chng
NIFTY 50	26178.70	-71.60	-0.27%	3830.11	34565.22	26373.20	0.74%	21743.65	20.40%	0.24%	9.35%
ADANIENT	2262.00	-17.50	-0.77%	6.98	158.27	2616.50	13.55%	1967.52	14.97%	0.62%	-11.12%
ADANIPTS	1475.00	-18.00	-1.21%	16.76	247.76	1549.00	4.78%	1010.75	45.93%	-1.09%	24.46%
APOLLOHOSP	7331.00	248.00	3.50%	5.81	423.83	8099.50	9.49%	6001.00	22.16%	-1.48%	-2.95%
ASIANPAINT	2847.40	31.80	1.13%	8.76	248.53	2985.70	4.63%	2124.75	34.01%	-5.15%	20.53%
AXISBANK	1290.10	4.30	0.33%	67.52	873.92	1304.60	1.11%	933.50	38.20%	0.26%	18.52%
BAJAJ-AUTO	9668.00	170.50	1.80%	5.03	487.66	9783.50	1.18%	7089.35	36.37%	4.27%	5.93%
BAJAJFINSV	2048.00	8.80	0.43%	12.37	254.41	2195.00	6.70%	1617.00	26.65%	-2.73%	19.88%
BAJFINANCE	976.95	-1.80	-0.18%	83.80	820.19	1102.50	11.39%	710.52	37.50%	-6.61%	-86.79%
BEL	412.80	-1.00	-0.24%	99.26	410.00	436.00	5.32%	240.25	71.82%	1.70%	41.74%
BHARTIARTL	2109.10	4.10	0.19%	91.19	1917.97	2174.50	3.01%	1559.50	35.24%	-0.18%	31.66%
CIPLA	1528.60	8.80	0.58%	16.14	246.95	1673.00	8.63%	1335.00	14.50%	-0.07%	0.57%
COALINDIA	426.00	-1.45	-0.34%	63.07	269.62	436.70	2.45%	349.25	21.98%	12.50%	8.59%
DRREDDY	1255.00	5.00	0.40%	5.41	67.78	1405.90	10.73%	1020.00	23.04%	-1.98%	-7.59%
EICHERMOT	7524.00	41.50	0.55%	3.96	298.45	7569.00	0.59%	4646.00	61.95%	3.81%	40.89%
ETERNAL	279.00	-2.80	-0.99%	295.77	825.47	368.45	24.28%	194.80	43.22%	-3.63%	#VALUE!
GRASIM	2869.80	20.90	0.73%	7.21	206.26	2977.80	3.63%	2276.95	26.04%	3.71%	13.50%
HCLTECH	1615.40	7.80	0.49%	21.12	341.43	2012.20	19.72%	1302.75	24.00%	-4.48%	-17.42%
HDFCBANK	962.95	-14.55	-1.49%	319.87	3078.57	1020.50	5.64%	812.15	18.57%	-2.57%	-44.12%
HDFCLIFE	776.05	16.75	2.21%	29.01	224.73	820.75	5.45%	584.30	32.82%	-1.17%	21.88%
HINDALCO	943.60	11.90	1.28%	103.69	988.84	970.80	2.80%	546.45	72.68%	13.17%	57.61%
HINDUNILVR	2424.80	40.70	1.71%	15.85	381.54	2750.00	11.83%	2136.00	13.52%	1.95%	-0.92%
ICICIBANK	1409.90	38.40	2.80%	172.60	2423.60	1500.00	6.01%	1186.00	18.88%	-1.51%	8.41%
INDIGO	5002.50	-100.00	-1.96%	8.57	431.83	6232.50	19.74%	3945.00	26.81%	-4.99%	14.25%
INFY	1605.00	-1.40	-0.09%	44.66	720.08	1982.80	19.05%	1307.00	22.80%	-0.61%	-17.14%
ITC	343.25	-6.45	-1.84%	725.75	2485.92	471.50	27.20%	337.75	1.63%	-13.64%	-27.39%
JIOFIN	298.55	-1.85	-0.62%	109.30	325.34	338.60	11.83%	198.65	50.29%	-1.10%	-2.29%
JSWSTEEL	1177.60	-8.30	-0.70%	13.95	165.08	1223.90	3.78%	880.00	33.82%	2.04%	29.60%
KOTAKBANK	2142.30	-48.60	-2.22%	53.08	1151.32	2301.90	6.93%	1723.75	24.28%	1.67%	19.16%
LT	4141.00	-9.40	-0.23%	12.05	500.29	4195.00	1.29%	2965.30	39.65%	2.78%	13.40%
M&M	3787.00	-3.30	-0.09%	12.99	490.80	3839.90	1.38%	2425.00	56.16%	1.97%	18.80%
MARUTI	17289.00	134.00	0.78%	1.92	331.22	17370.00	0.47%	11059.45	56.33%	5.36%	43.75%
MAXHEALTH	1051.60	1.10	0.10%	19.63	206.46	1314.30	19.99%	940.05	11.87%	-4.27%	-10.85%
NESTLEIND	1318.80	4.20	0.32%	8.66	113.75	1323.50	0.36%	1055.00	25.00%	5.43%	-41.12%
NTPC	350.50	-0.10	-0.03%	86.41	302.34	371.45	5.64%	292.80	19.71%	8.44%	3.16%
ONGC	241.79	3.70	1.55%	108.35	260.89	273.50	11.59%	205.00	17.95%	-1.30%	-8.03%
POWERGRID	268.15	-3.50	-1.29%	117.77	316.74	322.00	16.72%	247.30	8.43%	0.69%	-14.05%
RELIANCE	1508.90	-69.20	-4.39%	274.13	4156.29	1611.80	6.38%	1114.85	35.35%	2.43%	26.13%
SBILIFE	2091.00	15.40	0.74%	6.19	129.73	2106.00	0.71%	1372.55	52.34%	2.56%	43.37%
SBIN	1018.05	12.50	1.24%	95.75	974.89	1024.00	0.58%	680.00	49.71%	3.50%	26.74%
SHRIRAMFIN	1001.90	-1.45	-0.14%	43.53	436.07	1025.60	2.31%	493.35	103.08%	17.36%	-67.09%
SUNPHARMA	1760.00	31.10	1.80%	16.59	290.15	1865.00	5.63%	1548.00	13.70%	-4.23%	-6.53%
TATACONSUM	1215.00	32.90	2.78%	12.02	144.44	1215.00	0.00%	926.05	31.20%	1.65%	25.83%
TMPV	368.60	-4.95	-1.33%	174.93	640.58	810.00	54.49%	337.70	9.15%	5.64%	#VALUE!
TATASTEEL	186.32	0.60	0.32%	285.14	531.73	187.85	0.81%	122.62	51.95%	11.14%	34.23%
TCS	3256.80	40.70	1.27%	29.12	944.28	4322.95	24.66%	2866.60	13.61%	-0.68%	-21.56%
TECHM	1599.80	2.90	0.18%	5.70	91.53	1736.40	7.87%	1209.40	32.28%	1.66%	-5.48%
TITAN	4112.00	32.30	0.79%	8.20	336.38	4120.50	0.21%	2925.00	40.58%	6.99%	18.20%
TRENT	4055.00	-374.80	-8.46%	61.44	2508.26	7338.60	44.74%	3930.10	3.18%	5.90%	-39.38%
ULTRACEMCO	12196.00	109.00	0.90%	2.26	274.87	13097.00	6.88%	10047.85	21.38%	4.23%	2.55%
WIPRO	265.10	1.80	0.68%	40.84	108.18	324.60	18.33%	228.00	16.27%	1.30%	-10.58%

Disclaimer / Disclosures

ANALYST CERTIFICATION

I, Mrs. Vaishali Parekh B.com, Research Analyst, author and the name subscribed to this report, hereby certify that all of the views expressed in this research report accurately reflect our views about the subject issuer(s) or securities. We also certify that no part of our compensation was, is, or will be directly or indirectly related to the specific recommendation(s) or view(s) in this report.

Terms & conditions and other disclosures:

Prabhudas Lilladher Pvt. Ltd, Mumbai, India (hereinafter referred to as “PL”) is engaged in the business of Stock Broking, Portfolio Manager, Depository Participant and distribution for third party financial products. PL is a subsidiary of Prabhudas Lilladher Advisory Services Pvt Ltd. which has its various subsidiaries engaged in business of commodity broking, investment banking, financial services (margin funding) and distribution of third party financial/other products, details in respect of which are available at www.plindia.com

This document has been prepared by the Research Division of PL and is meant for use by the recipient only as information and is not for circulation. This document is not to be reported or copied or made available to others without prior permission of PL. It should not be considered or taken as an offer to sell or a solicitation to buy or sell any security.

The information contained in this report has been obtained from sources that are considered to be reliable. However, PL has not independently verified the accuracy or completeness of the same. Neither PL nor any of its affiliates, its directors or its employees accepts any responsibility of whatsoever nature for the information, statements and opinion given, made available or expressed herein or for any omission therein.

Recipients of this report should be aware that past performance is not necessarily a guide to future performance and value of investments can go down as well. The suitability or otherwise of any investments will depend upon the recipient's particular circumstances and, in case of doubt, advice should be sought from an independent expert/advisor.

Either PL or its affiliates or its directors or its employees or its representatives or its clients or their relatives may have position(s), make market, act as principal or engage in transactions of securities of companies referred to in this report and they may have used the research material prior to publication.

PL may from time to time solicit or perform investment banking or other services for any company mentioned in this document.

PL is registered as Research Analyst under Securities and Exchange Board of India (Research Analysts) Regulations, 2014 PL submits that no material disciplinary action has been taken on us by any Regulatory Authority impacting Equity Research Analysis activities.

PL or its research analysts or its associates or his relatives do not have any financial interest in the subject company.

PL or its research analysts or its associates or his relatives do not have actual/beneficial ownership of one per cent or more securities of the subject company at the end of the month immediately preceding the date of publication of the research report.

PL or its research analysts or its associates or his relatives do not have any material conflict of interest at the time of publication of the research report.

PL or its associates might have received compensation from the subject company in the past twelve months.

PL or its associates might have managed or co-managed public offering of securities for the subject company in the past twelve months or mandated by the subject company for any other assignment in the past twelve months.

PL or its associates might have received any compensation for investment banking or merchant banking or brokerage services from the subject company in the past twelve months.

PL or its associates might have received any compensation for products or services other than investment banking or merchant banking or brokerage services from the subject company in the past twelve months PL or its associates might have received any compensation or other benefits from the subject company or third party in connection with the research report.

PL encourages independence in research report preparation and strives to minimize conflict in preparation of research report. PL or its analysts did not receive any compensation or other benefits from the subject Company or third party in connection with the preparation of the research report. PL or its Research Analysts do not have any material conflict of interest at the time of publication of this report.

It is confirmed that Mrs. Vaishali Parekh B.com, Research Analyst of this report has not received any compensation from the companies mentioned in the report in the preceding twelve months compensation of our Research Analysts is not based on any specific merchant banking, investment banking or brokerage service transactions.

The Research analysts for this report certifies that all of the views expressed in this report accurately reflect his or her personal views about the subject company or companies and its or their securities, and no part of his or her compensation was, is or will be, directly or indirectly related to specific recommendations or views expressed in this report.

The research analysts for this report has not served as an officer, director or employee of the subject company PL or its research analysts have not engaged in market making activity for the subject company

Our sales people, traders, and other professionals or affiliates may provide oral or written market commentary or trading strategies to our clients that reflect opinions that are contrary to the opinions expressed herein, and our proprietary trading and investing businesses may make investment decisions that are inconsistent with the recommendations expressed herein. In reviewing these materials, you should be aware that any or all of the foregoing, among other things, may give rise to real or potential conflicts of interest.

PL and its associates, their directors and employees may (a) from time to time, have a long or short position in, and buy or sell the securities of the subject company or (b) be engaged in any other transaction involving such securities and earn brokerage or other compensation or act as a market maker in the financial instruments of the subject company or act as an advisor or lender/borrower to the subject company or may have any other potential conflict of interests with respect to any recommendation and other related information and opinions.

Regd. Office: 3rd Floor, Sadhana House, 570, P. B. Marg, Behind Mahindra Tower, Worli, Mumbai - 400 018, India.