

Date: 08th January 2026

* Sensex 84961.14 - 102.20

* Nifty 26140.75 - 37.95

* Bank Nifty 59990.85 - 127.55

Market Preview

Nifty ends marginally in the red

Nifty once again witnessed a sluggish session with a marginal loss with a gradual slide visible on the daily chart with overall bias still maintained positive. BankNifty continuing with the rangebound move slipped marginally to end near the 60000 zone with HDFC Bank slipping further to drag the index. The market breadth ended on a flat note with the advance decline indicating a neutral ratio at close.

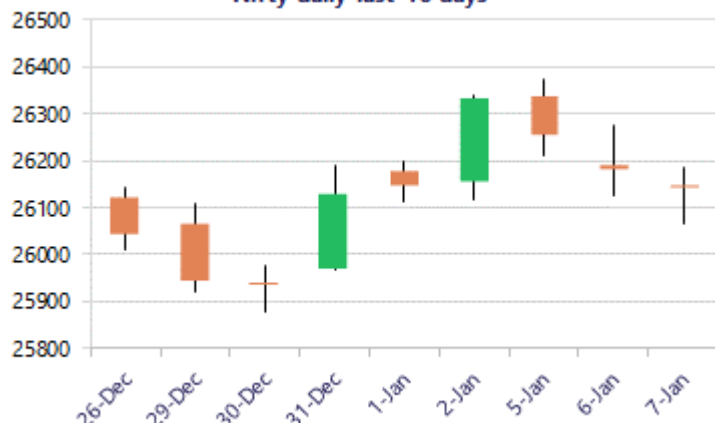
Market Forecast

Nifty daily range 26000-26300

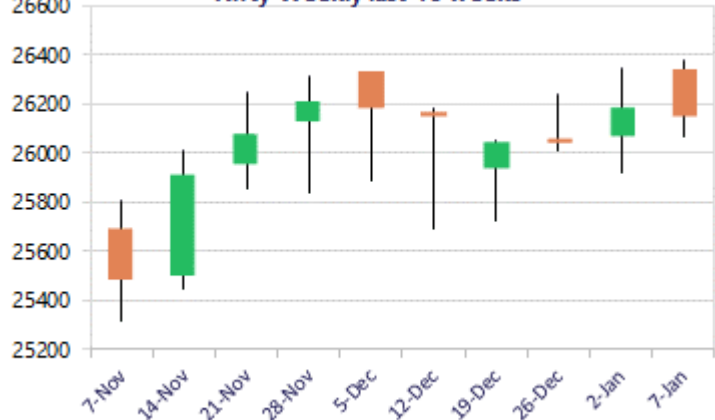
Nifty, once again witnessed a sluggish session finding resistance near the 26180 zone during the intraday session and with a gradual drag ended near the 26140 zone with a doji pattern visible on the daily chart with bias still maintained intact. With IT stocks among the major gainer, the index would have the major support positioned near the 50EMA level of 25900 zone as mentioned earlier, which needs to be sustained to maintain the overall bias intact, whereas on the upside the target of 26500 level is expected. BankNifty amid slight volatility erased some of the gains with overall rangebound movement visible to end the session near the 60000 zone with bias still maintained positive and hoping for a revival in the coming sessions, with the index having the important support positioned near the 50EMA level at 58700 zone which needs to be sustained and as of now and once the near-term support at around 59500 level is sustained, we can expect for further continuation of the upward move.

The support for the day is seen at 26000 levels, while the resistance is seen at 26300 levels. BankNifty would have the daily range of 59500-60500 levels.

Nifty daily last 10 days



Nifty Weekly last 10 weeks

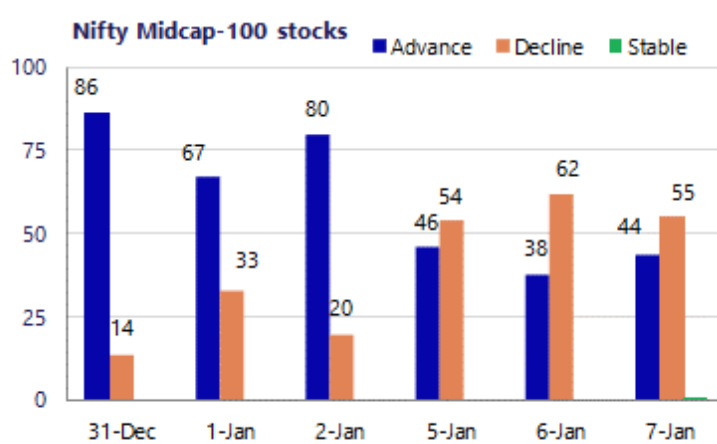
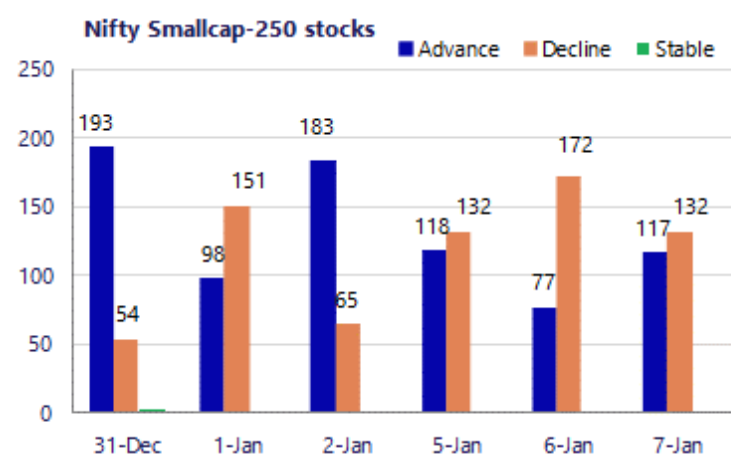


*Blue candle → Close rate > Open rate * Red candle → Close rate < Open rate

Sensex	Period	Closing	% Chng	Trend	Reversal	2 Sup	1 Sup	Pivot	1 Res	2 Res
Nifty	Daily	26140.75	-0.14%	-1	26198.45	26013	26077	26132	26196	26251
	Weekly	26328.55	1.10%	-3	26141.10	25722	26025	26182	26485	26642
	Monthly	26129.60	-0.28%	3	25829.00	25419	25774	26050	26405	26681
Bank Nifty	Daily	59990.85	-0.21%	7	59970.65	59634	59813	59939	60117	60244
	Weekly	60150.95	1.93%	-2	59690.75	58241	59196	59695	60650	61149
	Monthly	59581.85	-0.29%	3	58708.70	58069	58825	59469	60226	60870
Sensex	Daily	84961.14	-0.12%	-2	85249.60	84426	84694	84885	85152	85343
	Weekly	85762.01	0.85%	1	85636.35	84008	84885	85348	86226	86689
	Monthly	85220.60	-0.57%	3	84363.05	83208	84214	85159	86166	87111

Gainers - Losers (Nifty 500 Stocks)

Gainers				Losers			
Company Name	Last Price	% Gain	Volume	Company Name	Last Price	% Loss	Volume
Elecon Eng	517.85	8.04%	12148500	Cipla	1,467.90	-4.11%	5076210
Birlasoft	443.40	5.25%	2601993	Craftsman	7806	-2.69%	30616
Avenue Supermar	3841.6	4.86%	1317893	Can Fin Homes	926.50	-2.45%	114918
Asahi India	1,007.70	3.94%	268706	BASF	3,810.50	-2.24%	13071
Cyient	1,176.90	3.12%	379719	Chola Fin Hold	1,884.50	-2.14%	76967
COFORGE	1,701.50	2.68%	1845126	AIA Engineering	3989.2	-2.02%	53934
Alkem Lab	5,806.50	2.67%	188590	Authum Invest	3094	-1.76%	54831



Nifty Daily chart with RSI indicator



BankNifty Daily chart with RSI indicator



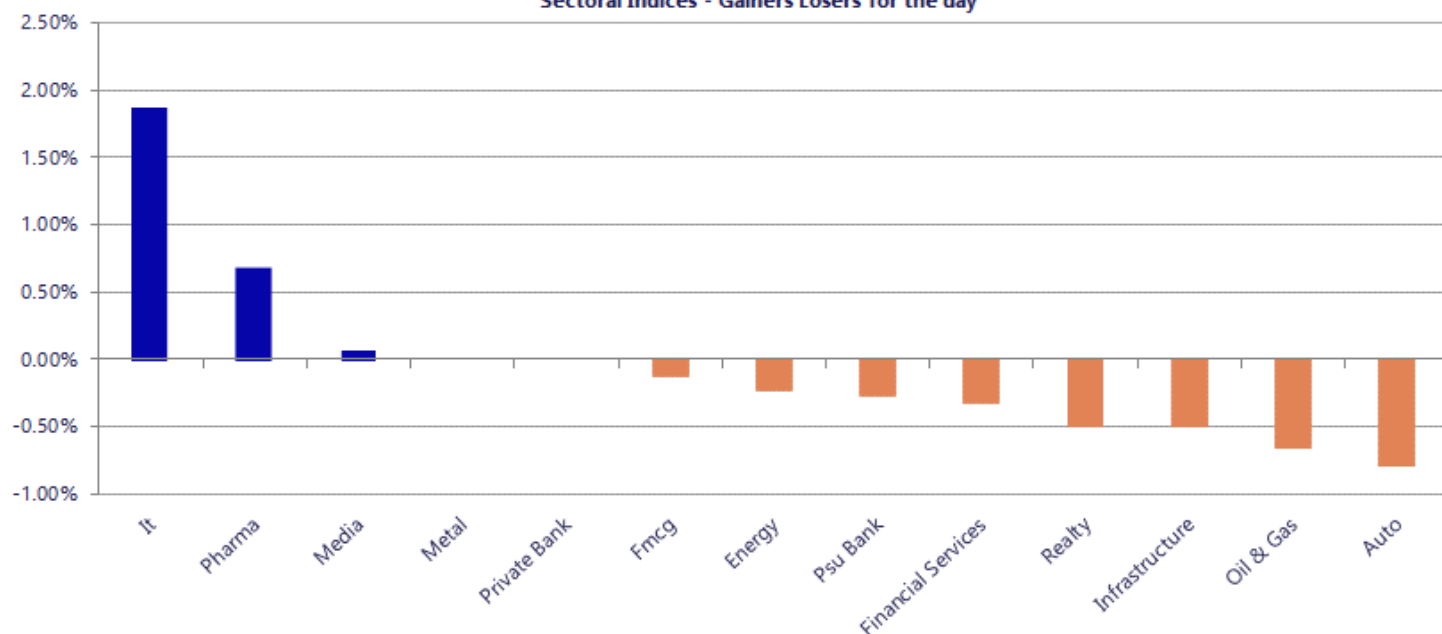
Breakouts - Cross above 200 DMA			
Company Name	LCP	Change %	200 DMA
PPAP Automotive	238.5	8.09	220.64
Senco Gold	364.1	7.12	339.91
Mangalam Organ	538.65	6.25	506.95
Menon Bearings	121.03	3.56	116.87
Tata Elxsi	5843	3.15	5664.48
Aarey Drugs	69.55	2.95	67.56
Nagreeka Cap	28.48	2.82	27.7
JBM Auto	665.9	2.72	648.24
Dynacons Sys	1035.8	2.70	1008.6
Avonmore Cap	19.5	2.25	19.07
R Systems Intl	412.45	2.04	404.2
L&T Technology	4398.9	1.73	4324.05
Varvee Global	154.66	1.68	152.11
Onward Tech	304.05	1.67	299.06
STC India	131.5	1.63	129.39
RBM Infracon	435.4	1.18	430.31
Digispice Tech	23.73	1.15	23.46
Freshara Agro	172.05	1.09	170.19

* Stocks crossing above its Simple Moving Average (200DMA)

Breakdown - Cross below 200 DMA			
Company Name	LCP	Change %	200 DMA
Cipla	1468.6	-3.20	1517.08
Shivalic Power	105.55	-3.10	108.93
Raj Oil Mills	48.51	-2.71	49.86
CIEINDIA	414.05	-1.36	419.74
Monte Carlo	625.7	-1.26	633.68
Shree Vasu	689.9	-1.05	697.21
Ken Enterprises	44.1	-0.97	44.53
Oriana Power	2170	-0.88	2189.37
HUL	2404	-0.80	2423.29
OneSource Spec	1784.2	-0.74	1797.43
Entero Health	1171.3	-0.56	1177.87
BLAL	208	-0.53	209.11
AFFLE 3I	1801.1	-0.50	1810.23
MO Nifty Realt	90.9	-0.48	91.34
Asian Hotel (E)	145.25	-0.47	145.94
Chola Fin Hold	1884.6	-0.40	1892.26
TITAGARH	855	-0.35	857.99
Man Industries	382.3	-0.33	383.57

* Stocks crossing below its Simple Moving Average (200DMA)

Sectoral Indices - Gainers Losers for the day



Stocks witnessing a volume surge as compared to their 5 day average

Watch out for the stocks that have seen a huge spurt in its share price over the last three days

Volume Shockers - NSE					
Company name	LCP	% Chg	Volume	Avg Vol *	% Chg
Tribhovandas	188.55	16.28	2021619	5094	39585
Emami	527.75	1.12	1123727	12959	8572
Radhika Jewel	82.21	12.37	607827	7717	7777
Senco Gold	363.85	12.42	2517575	32364	7679
Innovative Idea	15	0	103000	1600	6338
Balu Forge Indu	516.6	-11.47	1018267	16478	6080
Power Mech	2400	2.92	106154	1780	5864
Nexus Select	159.57	-0.94	5443651	103139	5178
Alkem Lab	5813.25	2.85	52410	1084	4735
Saregama India	377.4	6.67	912931	23351	3810
SIS	338.3	0	38940	1178	3206
TV TodayNetwork	142	1.5	54081	1801	2902
GMR Airports	104.5	0.05	10514395	447283	2251
Hindustan Media	70.65	2.63	36159	1572	2200
Tata Elxsi	5862.75	9.72	109924	4955	2118
Delhivery	422.9	2.15	635054	32308	1866
Cipla	1469.6	-3.97	358041	18611	1824
360 ONE WAM	1193.1	0.51	224362	11945	1778
SBI Life Insura	2072.1	-1.09	607830	34826	1645
AGI Infra	295.9	13.13	625151	37844	1552
Max Healthcare	1033.7	-1.71	402845	24814	1523

Price Shockers - NSE				
Company name	LCP	Prv Close	% Chg	Volume
United Van Hors	252	182.8	37.86	109635
Silver Touch Te	1582.4	1252.25	26.36	91775
Manaksia Alumin	36.97	29.58	24.98	143397
Gajanan Sec	67.79	54.78	23.75	24059
Tourism Finance	67.83	55.14	23.01	1623121
PG Foils	214.9	177.35	21.17	57474
GNA Axles	383	317.95	20.46	42902
Sangam Finserv	36.27	30.2	20.1	37121
Godavari Drugs	90.1	76.02	18.52	27970
Mirc Electronic	34.21	28.95	18.17	931572
Shankara Buildi	124.65	106.15	17.43	194055
Captain Technoc	199	169.5	17.4	0
Deccan Gold	110.92	94.53	17.34	4262732
Ravi Leela Gran	46.9	40.24	16.55	229
Daulat Sec	34.95	30.06	16.27	1413
Rajoo Engineers	74.38	64.18	15.89	719833
Swan Defence	1860.9	1607.6	15.76	1788
Trade Wings	539.45	466.05	15.75	55
Onix Solar	660.35	570.5	15.75	3090
Apis India	95.47	82.48	15.75	537500
Hypersoft Techn	74.97	64.77	15.75	1868

Nifty 50 stocks - Summary Details											
Symbol	LTP	Chng	% Chng	Volume (lacs)	Turnover (crs.)	52w High	Diff with 52w H	52w Low	Diff with 52w L	30 days % chng	365 days % chng
NIFTY 50	26140.75	-37.95	-0.14%	3382.02	30231.51	26373.20	0.88%	21743.65	20.22%	-0.03%	9.06%
ADANIENT	2271.90	12.80	0.57%	5.29	120.06	2616.50	13.17%	1967.52	15.47%	-0.28%	-11.91%
ADANIPTS	1464.80	-8.40	-0.57%	21.25	311.59	1549.00	5.44%	1010.75	44.92%	-2.40%	22.81%
APOLLOHOSP	7457.00	109.00	1.48%	5.68	421.12	8099.50	7.93%	6001.00	24.26%	2.20%	0.68%
ASIANPAINT	2806.00	-39.80	-1.40%	6.37	179.73	2985.70	6.02%	2124.75	32.06%	-4.13%	21.83%
AXISBANK	1294.80	1.00	0.08%	54.40	702.01	1304.60	0.75%	933.50	38.70%	0.88%	19.26%
BAJAJ-AUTO	9807.00	146.00	1.51%	3.35	325.86	9807.00	0.00%	7089.35	38.33%	6.06%	7.76%
BAJAJFINSV	2030.90	-13.70	-0.67%	6.54	132.71	2195.00	7.48%	1617.00	25.60%	-2.48%	20.19%
BAJFINANCE	969.70	-7.65	-0.78%	70.48	682.70	1102.50	12.05%	710.52	36.48%	-6.74%	-86.81%
BEL	415.60	2.50	0.61%	82.79	342.41	436.00	4.68%	240.25	72.99%	1.52%	41.50%
BHARTIARTL	2084.00	-21.30	-1.01%	41.71	869.71	2174.50	4.16%	1559.50	33.63%	-0.17%	31.68%
CIPLA	1465.30	-65.50	-4.28%	50.76	748.58	1673.00	12.41%	1335.00	9.76%	0.66%	1.29%
COALINDIA	431.40	4.35	1.02%	89.18	382.46	436.70	1.21%	349.25	23.52%	12.40%	8.48%
DRREDDY	1244.90	-11.30	-0.90%	12.15	151.67	1405.90	11.45%	1020.00	22.05%	-1.49%	-7.13%
EICHERMOT	7597.00	74.50	0.99%	3.81	287.74	7597.00	0.00%	4646.00	63.52%	4.36%	41.65%
ETERNAL	280.50	1.45	0.52%	381.83	1073.95	368.45	23.87%	194.80	43.99%	-4.57%	#VALUE!
GRASIM	2830.00	-35.30	-1.23%	2.88	81.76	2977.80	4.96%	2276.95	24.29%	4.31%	14.16%
HCLTECH	1654.50	38.20	2.36%	38.17	625.29	2012.20	17.78%	1302.75	27.00%	-3.96%	-16.97%
HDFCBANK	950.25	-11.95	-1.24%	528.84	5024.50	1020.50	6.88%	812.15	17.00%	-4.10%	-44.99%
HDFCLIFE	773.70	-4.15	-0.53%	13.50	104.34	820.75	5.73%	584.30	32.41%	1.24%	24.86%
HINDALCO	937.85	-4.40	-0.47%	65.54	618.85	970.80	3.39%	546.45	71.63%	14.45%	59.39%
HINDUNILVR	2390.00	-34.70	-1.43%	8.93	214.47	2750.00	13.09%	2136.00	11.89%	3.68%	0.77%
ICICIBANK	1425.60	14.40	1.02%	158.14	2248.68	1500.00	4.96%	1186.00	20.20%	1.34%	11.55%
INDIGO	4959.50	-43.00	-0.86%	11.57	573.57	6232.50	20.43%	3945.00	25.72%	-6.85%	12.01%
INFY	1640.00	27.80	1.72%	45.08	736.26	1982.80	17.29%	1307.00	25.48%	-0.25%	-16.84%
ITC	341.75	-0.70	-0.20%	294.38	1006.02	471.50	27.52%	337.75	1.18%	-15.43%	-28.89%
JIOFIN	303.70	5.15	1.73%	204.13	619.17	338.60	10.31%	198.65	52.88%	-1.71%	-2.89%
JSWSTEEL	1188.60	12.30	1.05%	11.61	137.74	1223.90	2.88%	880.00	35.07%	1.21%	28.55%
KOTAKBANK	2146.00	-0.40	-0.02%	21.12	450.09	2301.90	6.77%	1723.75	24.50%	-0.39%	16.74%
LT	4150.10	9.50	0.23%	12.13	501.84	4195.00	1.07%	2965.30	39.96%	2.54%	13.13%
M&M	3755.00	-30.60	-0.81%	10.47	392.99	3839.90	2.21%	2425.00	54.85%	1.84%	18.65%
MARUTI	16806.00	-486.00	-2.81%	4.28	720.75	17370.00	3.25%	11059.45	51.96%	6.20%	44.89%
MAXHEALTH	1034.90	-16.70	-1.59%	44.85	463.59	1314.30	21.26%	940.05	10.09%	-4.17%	-10.76%
NESTLEIND	1317.20	-2.70	-0.20%	6.77	89.27	1332.70	1.16%	1055.00	24.85%	5.85%	-40.88%
NTPC	349.00	-1.80	-0.51%	71.66	249.36	371.45	6.04%	292.80	19.19%	8.51%	3.22%
ONGC	239.20	-2.69	-1.11%	82.53	197.96	273.50	12.54%	205.00	16.68%	0.27%	-6.57%
POWERGRID	264.25	-4.30	-1.60%	148.77	393.80	322.00	17.93%	247.30	6.85%	-0.46%	-15.03%
RELIANCE	1505.10	-2.50	-0.17%	111.99	1687.48	1611.80	6.62%	1114.85	35.00%	-2.14%	20.50%
SBILIFE	2072.00	-23.80	-1.14%	10.66	222.64	2109.60	1.78%	1372.55	50.96%	3.56%	44.77%
SBIN	1006.90	-12.00	-1.18%	78.96	797.40	1024.00	1.67%	680.00	48.07%	4.88%	28.42%
SHRIRAMFIN	996.00	-6.65	-0.66%	41.91	417.71	1025.60	2.89%	493.35	101.89%	17.28%	-67.11%
SUNPHARMA	1783.40	23.20	1.32%	30.59	544.15	1865.00	4.38%	1548.00	15.21%	-2.50%	-4.84%
TATACONSUM	1210.30	-0.10	-0.01%	10.21	123.84	1220.90	0.87%	926.05	30.69%	4.08%	28.84%
TMPV	363.00	-5.90	-1.60%	106.82	386.62	810.00	55.19%	337.70	7.49%	4.33%	#VALUE!
TATASTEEL	183.55	-2.65	-1.42%	182.31	335.94	187.85	2.29%	122.62	49.69%	11.42%	34.58%
TCS	3294.00	38.20	1.17%	19.89	653.43	4322.95	23.80%	2866.60	14.91%	0.54%	-20.59%
TECHM	1630.00	28.20	1.76%	13.10	212.49	1736.40	6.13%	1209.40	34.78%	1.97%	-5.19%
TITAN	4273.90	162.10	3.94%	34.96	1494.71	4312.10	0.89%	2925.00	46.12%	7.83%	19.13%
TRENT	4062.00	14.40	0.36%	14.77	595.77	7338.60	44.65%	3930.10	3.36%	-3.24%	-44.61%
ULTRACEMCO	12172.00	-32.00	-0.26%	2.47	300.07	13097.00	7.06%	10047.85	21.14%	5.23%	3.55%
WIPRO	270.35	4.75	1.79%	102.42	276.66	324.60	16.71%	228.00	18.57%	2.19%	-9.80%

Disclaimer / Disclosures

ANALYST CERTIFICATION

I, Mrs. Vaishali Parekh B.com, Research Analyst, author and the name subscribed to this report, hereby certify that all of the views expressed in this research report accurately reflect our views about the subject issuer(s) or securities. We also certify that no part of our compensation was, is, or will be directly or indirectly related to the specific recommendation(s) or view(s) in this report.

Terms & conditions and other disclosures:

Prabhudas Lilladher Pvt. Ltd, Mumbai, India (hereinafter referred to as "PL") is engaged in the business of Stock Broking, Portfolio Manager, Depository Participant and distribution for third party financial products. PL is a subsidiary of Prabhudas Lilladher Advisory Services Pvt Ltd. which has its various subsidiaries engaged in business of commodity broking, investment banking, financial services (margin funding) and distribution of third party financial/other products, details in respect of which are available at www.plindia.com

This document has been prepared by the Research Division of PL and is meant for use by the recipient only as information and is not for circulation. This document is not to be reported or copied or made available to others without prior permission of PL. It should not be considered or taken as an offer to sell or a solicitation to buy or sell any security.

The information contained in this report has been obtained from sources that are considered to be reliable. However, PL has not independently verified the accuracy or completeness of the same. Neither PL nor any of its affiliates, its directors or its employees accepts any responsibility of whatsoever nature for the information, statements and opinion given, made available or expressed herein or for any omission therein.

Recipients of this report should be aware that past performance is not necessarily a guide to future performance and value of investments can go down as well. The suitability or otherwise of any investments will depend upon the recipient's particular circumstances and, in case of doubt, advice should be sought from an independent expert/advisor.

Either PL or its affiliates or its directors or its employees or its representatives or its clients or their relatives may have position(s), make market, act as principal or engage in transactions of securities of companies referred to in this report and they may have used the research material prior to publication.

PL may from time to time solicit or perform investment banking or other services for any company mentioned in this document.

PL is registered as Research Analyst under Securities and Exchange Board of India (Research Analysts) Regulations, 2014 PL submits that no material disciplinary action has been taken on us by any Regulatory Authority impacting Equity Research Analysis activities.

PL or its research analysts or its associates or his relatives do not have any financial interest in the subject company.

PL or its research analysts or its associates or his relatives do not have actual/beneficial ownership of one per cent or more securities of the subject company at the end of the month immediately preceding the date of publication of the research report.

PL or its research analysts or its associates or his relatives do not have any material conflict of interest at the time of publication of the research report.

PL or its associates might have received compensation from the subject company in the past twelve months.

PL or its associates might have managed or co-managed public offering of securities for the subject company in the past twelve months or mandated by the subject company for any other assignment in the past twelve months.

PL or its associates might have received any compensation for investment banking or merchant banking or brokerage services from the subject company in the past twelve months.

PL or its associates might have received any compensation for products or services other than investment banking or merchant banking or brokerage services from the subject company in the past twelve months PL or its associates might have received any compensation or other benefits from the subject company or third party in connection with the research report.

PL encourages independence in research report preparation and strives to minimize conflict in preparation of research report. PL or its analysts did not receive any compensation or other benefits from the subject Company or third party in connection with the preparation of the research report. PL or its Research Analysts do not have any material conflict of interest at the time of publication of this report.

It is confirmed that Mrs. Vaishali Parekh B.com, Research Analyst of this report has not received any compensation from the companies mentioned in the report in the preceding twelve months compensation of our Research Analysts is not based on any specific merchant banking, investment banking or brokerage service transactions.

The Research analysts for this report certifies that all of the views expressed in this report accurately reflect his or her personal views about the subject company or companies and its or their securities, and no part of his or her compensation was, is or will be, directly or indirectly related to specific recommendations or views expressed in this report.

The research analysts for this report has not served as an officer, director or employee of the subject company PL or its research analysts have not engaged in market making activity for the subject company

Our sales people, traders, and other professionals or affiliates may provide oral or written market commentary or trading strategies to our clients that reflect opinions that are contrary to the opinions expressed herein, and our proprietary trading and investing businesses may make investment decisions that are inconsistent with the recommendations expressed herein. In reviewing these materials, you should be aware that any or all of the foregoing, among other things, may give rise to real or potential conflicts of interest.

PL and its associates, their directors and employees may (a) from time to time, have a long or short position in, and buy or sell the securities of the subject company or (b) be engaged in any other transaction involving such securities and earn brokerage or other compensation or act as a market maker in the financial instruments of the subject company or act as an advisor or lender/borrower to the subject company or may have any other potential conflict of interests with respect to any recommendation and other related information and opinions.

Regd. Office: 3rd Floor, Sadhana House, 570, P. B. Marg, Behind Mahindra Tower, Worli, Mumbai - 400 018, India.