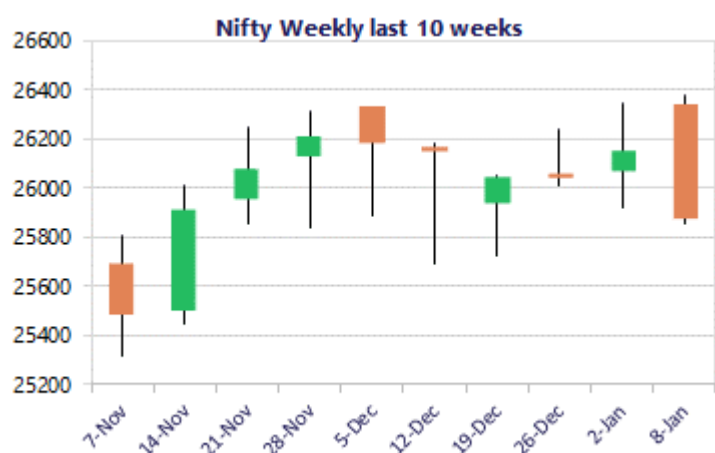
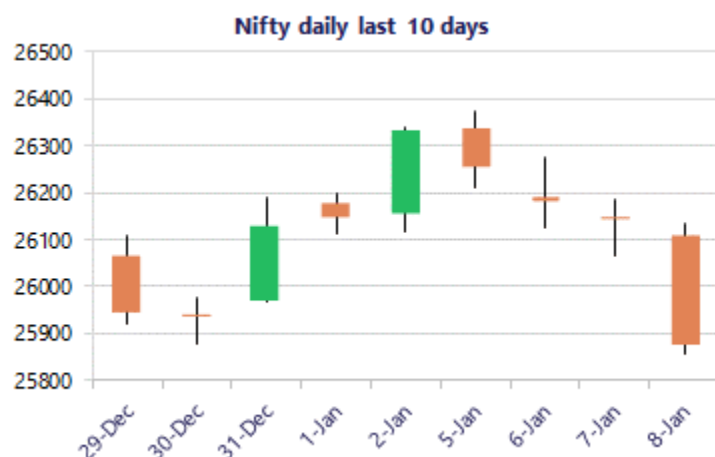


Date: 09<sup>th</sup> January 2026

\* Sensex 84180.96 - 780.18

\* Nifty 25876.85 - 263.90

\* Bank Nifty 59686.50 - 304.35



\*Blue candle → Close rate > Open rate \* Red candle → Close rate < Open rate

## Market Preview

### Nifty tanks; ends below 25900 zone

Nifty witnessed heavy profit booking during the session to end below the important support zone of 25900 level weakening the bias and sentiment. BankNifty ended just below the 59700 zone with overall bias maintained with a cautious approach as of now awaiting for further developments. The market breadth was very weak with the advance decline indicating a ratio of 1:5 at close.

## Market Forecast

### Nifty daily range 25700-26100

Nifty, plunged with heavy profit booking witnessed as the day progressed to close below the important support zone of the 50EMA level at 25900 zone with bias and sentiment turning weak and is precariously placed with next major support positioned near the significant 100 period MA at 25530 level. The index with a big bearish candle formation on the daily chart has also slipped below the important trendline zone at 25900 level and technically would need to sustain the near-term support of 25700 zone of the previous low made recently.

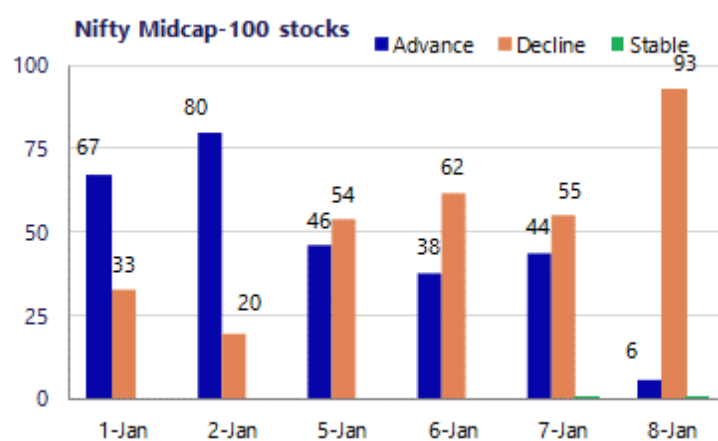
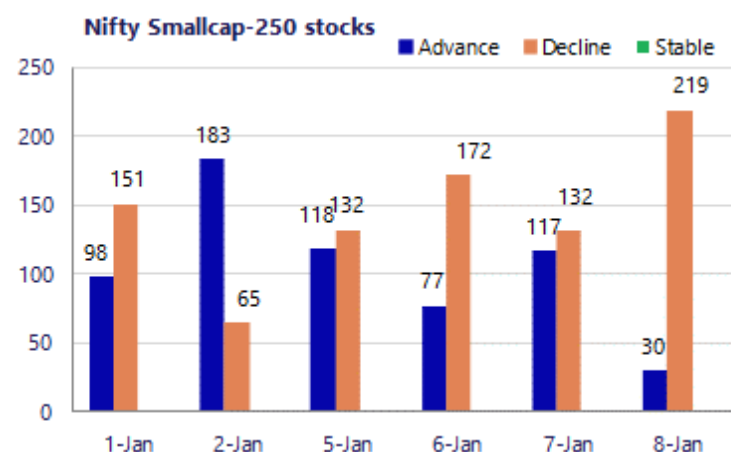
BankNifty witnessed profit booking during the session weakening the bias but as compared to the Nifty index has been resilient with minimal loss witnessed and would need to sustain the important support positioned near the 50EMA level at 58800 zone as of now. The upcoming sessions would be crucial which shall decide the further course of the market and with the result season started, we can anticipate high volatility in the coming days.

The support for the day is seen at 25700 levels, while the resistance is seen at 26100 levels. BankNifty would have the daily range of 59200-60200 levels.

Sensex	Period	Closing	% Chng	Trend	Reversal	2 Sup	1 Sup	Pivot	1 Res	2 Res
Nifty	Daily	25876.85	-1.01%	-2	26217.10	25681	25779	25956	26054	26231
	Weekly	26328.55	1.10%	-3	26141.10	25722	26025	26182	26485	26642
	Monthly	26129.60	-0.28%	3	25829.00	25419	25774	26050	26405	26681
Bank Nifty	Daily	59686.50	-0.51%	-1	60162.50	59240	59463	59788	60011	60336
	Weekly	60150.95	1.93%	-2	59690.75	58241	59196	59695	60650	61149
	Monthly	59581.85	-0.29%	3	58708.70	58069	58825	59469	60226	60870
Sensex	Daily	84180.96	-0.92%	-3	85155.70	83564	83872	84419	84727	85274
	Weekly	85762.01	0.85%	1	85636.35	84008	84885	85348	86226	86689
	Monthly	85220.60	-0.57%	3	84363.05	83208	84214	85159	86166	87111

**Gainers - Losers ( Nifty 500 Stocks )**

Gainers				Losers			
Company Name	Last Price	% Gain	Volume	Company Name	Last Price	% Loss	Volume
Alkyl Amines	1607.5	4.50%	2433863	BHEL	271.75	-10.48%	48921548
AIA Engineering	4,059.10	1.75%	237205	FSN E-Co Nykaa	256.65	-3.64%	6101559
Alok Industries	16.1	1.45%	33475858	BPCL	354.55	-3.71%	7713506
Atul	6,175.00	0.96%	19204	Adani Energy	994.30	-3.79%	1182522
Authum Invest	3,121.10	0.88%	81725	HFCL	66.94	-3.85%	14321347
Apollo Tyres	519.95	0.46%	1361989	City Union Bank	279.5	-3.94%	2125160
Campus Active	259.30	0.46%	585082	HBL Eng	911.1	-4.79%	1537670



## Nifty Daily chart with RSI indicator



## BankNifty Daily chart with RSI indicator

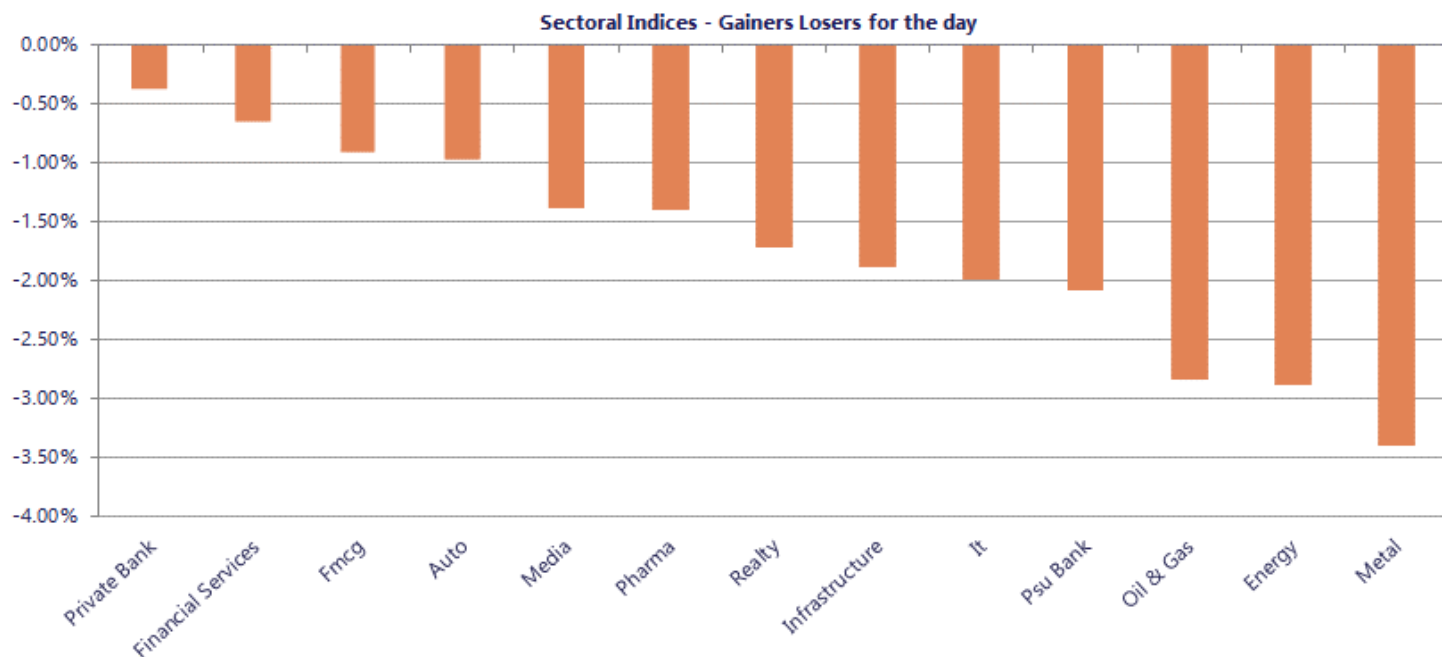


Breakouts - Cross above 200 DMA			
Company Name	LCP	Change %	200 DMA
Akash Infraproj	28.95	5.35	27.48
Steelcast	218.17	3.13	211.54
Veranda Learnin	220.56	1.83	216.59
Inox India	1165.3	1.36	1149.7
Eternal	283.4	0.53	281.91
Readymix Constr	115	0.40	114.54
Fert and Chem	894.1	0.35	890.97
Ideaforge Tech	482	0.19	481.1

Breakdown - Cross below 200 DMA			
Company Name	LCP	Change %	200 DMA
Tribhovandas	177.05	-5.33	187.01
Abha Power	34.2	-4.42	35.78
Sunflag Iron	256.75	-4.07	267.64
Syngene Intl	636.25	-3.02	656.05
HUDCO	217.67	-2.87	224.11
MSTC	499	-2.84	513.61
Indo Thai Secu	244.85	-2.84	252.01
Fusion Finance	167.8	-2.57	172.22
Varvee Global	148.5	-2.40	152.15
Goldiam Inter	358.3	-2.38	367.05
Federal-Mogul	463.85	-2.38	475.17
Harsha Engineer	385.55	-2.38	394.97
Shree Pushkar	339.65	-2.35	347.84
IFB Industries	1491.5	-2.32	1527
Gopal Snacks	326.6	-2.24	334.08
Sadhav Shipping	102.6	-2.20	104.91
Rail Vikas	347.05	-2.19	354.81
NCL Industries	204.9	-2.16	209.42

\* Stocks crossing above its Simple Moving Average (200DMA)

\* Stocks crossing below its Simple Moving Average (200DMA)



Stocks witnessing a volume surge as compared to their 5 day average

Watch out for the stocks that have seen a huge spurt in its share price over the last three days

Volume Shockers - NSE					
Company name	LCP	% Chg	Volume	Avg Vol *	% Chg
Balaji Amines	1187.55	10.72	901219	2368	37958
Eimco Elecon	1730	6.29	167913	1002	16651
Madras Fert	82.97	5.83	386046	3612	10587
DEE Development	226.7	8.42	885451	12303	7097
Panacea Biotec	427.25	11.35	1124690	16833	6581
Senco Gold	355.25	-1.73	2016003	32364	6129
PB Fintech	1695.7	-1.36	902529	19704	4480
Mphasis	2815.5	-2.05	150589	3543	4150
Ramco Cements	1085	0.65	499869	15080	3215
Alkyl Amines	1631.4	6.05	73184	2247	3156
Aarti Ind	371.25	-1.25	767517	27366	2705
Modern Eng	31.28	-8.56	37261	1793	1978
SignatureGlobal	992.7	-10.05	251673	12631	1892
Oberoi Realty	1724.6	0.97	183506	10027	1730
eClerx Services	4779.25	0.13	61250	3442	1679
Sigma Solve	63	0.06	23473	1373	1610
Bhakti Gems	42.8	4.95	374788	22660	1554
Bedmutha Ind	124.15	3.33	23278	1467	1487
Ad Manum Fin	55.5	-5.95	15729	1075	1363
Sona BLW	465.05	-1.78	544990	37661	1347
Gokaldas Export	623.6	-8.84	171858	13203	1202

Price Shockers - NSE					
Company name	LCP	Prv Close	% Chg	Volume	
Sangam Finserv	43.52	32	36	56471	
Gajanan Sec	70.1	55.77	25.69	7846	
PG Foils	223.5	178.4	25.28	55640	
Ravi Leela Gran	48.85	40.05	21.97	5511	
Shankara Buildi	126.45	106.5	18.73	17122	
Deccan Gold	109.51	94.14	16.33	1676672	
Silver Touch Te	1567.75	1350.3	16.1	63710	
Swan Defence	1953.9	1687.95	15.76	1765	
Hypersoft Techn	78.71	68	15.75	653	
Le Lavoisier	177.5	153.35	15.75	3204	
Stellant Sec	493.25	426.15	15.75	458	
Trade Wings	566.4	489.35	15.75	1506	
SSK Lifestyles	91.63	79.17	15.74	1926	
Soma Papers	231.65	200.15	15.74	595	
VASHU BHAGNANI	67.37	58.21	15.74	7546	
Sayaji Industri	75.83	65.52	15.74	8037	
Embassy Develop	68.99	59.61	15.74	1258472	
Kinetic Trust	58.26	50.34	15.73	1376	
Spice Islands	207.45	179.25	15.73	27758	
ARUNIS ABODE	178.8	154.5	15.73	293877	
Adcounty Media	119.25	103.05	15.72	3200	



Nifty 50 stocks - Summary Details											
Symbol	LTP	Chng	% Chng	Volume (lacs)	Turnover (crs.)	52w High	Diff with 52w H	52w Low	Diff with 52w L	30 days % chng	365 days % chng
NIFTY 50	25876.85	-263.90	-1.01%	3284.72	27552.75	26373.20	1.88%	21743.65	19.01%	-0.17%	10.69%
ADANIENT	2209.30	-64.80	-2.85%	7.92	176.79	2616.50	15.56%	1967.52	12.29%	0.38%	-8.10%
ADANIPTS	1464.00	-1.30	-0.09%	19.74	291.25	1549.00	5.49%	1010.75	44.84%	-2.92%	25.99%
APOLLOHOSP	7351.00	-96.50	-1.30%	7.78	573.72	8099.50	9.24%	6001.00	22.50%	3.59%	0.25%
ASIANPAINT	2788.00	-21.40	-0.76%	6.20	172.53	2985.70	6.62%	2124.75	31.22%	-5.36%	23.92%
AXISBANK	1286.00	-9.50	-0.73%	39.49	509.73	1304.60	1.43%	933.50	37.76%	1.01%	21.83%
BAJAJ-AUTO	9738.00	-51.50	-0.53%	5.34	523.87	9888.00	1.52%	7089.35	37.36%	7.47%	10.94%
BAJAJFINSV	2005.00	-26.90	-1.32%	7.57	151.98	2195.00	8.66%	1617.00	24.00%	-3.08%	20.62%
BAJFINANCE	970.10	1.30	0.13%	44.10	428.33	1102.50	12.01%	710.52	36.53%	-7.56%	-86.82%
BEL	415.65	-	#VALUE!	222.35	930.50	436.00	4.67%	240.25	73.01%	2.15%	47.32%
BHARTIARTL	2066.60	-17.60	-0.84%	55.35	1144.81	2174.50	4.96%	1559.50	32.52%	-1.17%	31.21%
CIPLA	1461.00	-6.90	-0.47%	26.51	387.76	1673.00	12.67%	1335.00	9.44%	-3.48%	-1.58%
COALINDIA	424.40	-7.25	-1.68%	59.91	255.83	436.70	2.82%	349.25	21.52%	13.61%	13.97%
DRREDDY	1206.50	-36.30	-2.92%	20.01	244.27	1405.90	14.18%	1020.00	18.28%	-2.54%	-7.96%
EICHERMOT	7552.50	-30.00	-0.40%	4.60	347.80	7601.00	0.64%	4646.00	62.56%	5.20%	44.43%
ETERNAL	283.15	2.20	0.78%	381.91	1084.23	368.45	23.15%	194.80	45.35%	-3.92%	#VALUE!
GRASIM	2787.10	-50.00	-1.76%	4.37	122.46	2977.80	6.40%	2276.95	22.40%	3.28%	15.30%
HCLTECH	1643.00	-4.70	-0.29%	32.66	538.78	2012.20	18.35%	1302.75	26.12%	-2.10%	-15.63%
HDFCBANK	948.00	-1.05	-0.11%	219.28	2077.89	1020.50	7.10%	812.15	16.73%	-5.41%	-44.52%
HDFCLIFE	759.90	-12.45	-1.61%	19.84	150.51	820.75	7.41%	584.30	30.05%	0.53%	27.46%
HINDALCO	903.00	-35.45	-3.78%	62.66	569.71	970.80	6.98%	546.45	65.25%	13.99%	63.46%
HINDUNILVR	2389.70	-9.70	-0.40%	11.64	278.84	2750.00	13.10%	2136.00	11.88%	2.60%	0.98%
ICICIBANK	1434.90	7.20	0.50%	148.61	2133.97	1500.00	4.34%	1186.00	20.99%	2.53%	12.94%
INDIGO	4905.00	-46.00	-0.93%	13.03	643.39	6232.50	21.30%	3945.00	24.33%	-7.81%	16.03%
INFY	1612.60	-26.40	-1.61%	39.42	638.41	1982.80	18.67%	1307.00	23.38%	1.41%	-15.42%
ITC	340.50	-0.75	-0.22%	367.01	1251.98	471.50	27.78%	337.75	0.81%	-15.73%	-22.91%
JIOFIN	292.65	-10.85	-3.57%	122.49	363.06	338.60	13.57%	198.65	47.32%	-0.08%	2.29%
JSWSTEEL	1158.00	-31.80	-2.67%	12.75	148.25	1223.90	5.38%	880.00	31.59%	2.37%	32.07%
KOTAKBANK	2130.00	-14.00	-0.65%	22.95	488.59	2301.90	7.47%	1723.75	23.57%	-0.51%	20.47%
LT	4044.70	-112.30	-2.70%	23.29	949.26	4195.00	3.58%	2965.30	36.40%	2.94%	15.37%
M&M	3715.00	-33.80	-0.90%	12.61	469.81	3839.90	3.25%	2425.00	53.20%	0.85%	20.71%
MARUTI	16645.00	-164.00	-0.98%	2.38	397.60	17370.00	4.17%	11059.45	50.50%	3.24%	42.99%
MAXHEALTH	1030.00	-4.70	-0.45%	21.18	217.63	1314.30	21.63%	940.05	9.57%	-5.71%	-10.28%
NESTLEIND	1306.00	-8.80	-0.67%	5.56	72.55	1332.70	2.00%	1055.00	23.79%	5.45%	-39.83%
NTPC	342.50	-6.35	-1.82%	88.06	303.84	371.45	7.79%	292.80	16.97%	7.90%	6.52%
ONGC	231.20	-7.86	-3.29%	92.12	214.85	273.50	15.47%	205.00	12.78%	-0.90%	-6.02%
POWERGRID	259.25	-4.85	-1.84%	117.62	306.00	322.00	19.49%	247.30	4.83%	-2.11%	-13.69%
RELIANCE	1470.70	-33.50	-2.23%	165.17	2440.68	1611.80	8.75%	1114.85	31.92%	-2.36%	23.50%
SBILIFE	2081.80	11.00	0.53%	9.57	199.16	2109.60	1.32%	1372.55	51.67%	2.33%	44.34%
SBIN	997.60	-9.55	-0.95%	68.53	686.49	1024.00	2.58%	680.00	46.71%	3.67%	29.72%
SHRIRAMFIN	992.00	-3.85	-0.39%	38.04	377.82	1025.60	3.28%	493.35	101.07%	16.49%	-66.46%
SUNPHARMA	1760.00	-22.60	-1.27%	19.11	337.67	1865.00	5.63%	1548.00	13.70%	-1.26%	-3.51%
TATACONSUM	1197.50	-15.10	-1.25%	5.63	67.46	1220.90	1.92%	926.05	29.31%	4.27%	28.06%
TMPV	358.00	-5.35	-1.47%	73.53	265.33	810.00	55.80%	337.70	6.01%	2.76%	#VALUE!
TATASTEEL	179.90	-3.90	-2.12%	384.54	697.59	187.85	4.23%	122.62	46.71%	9.99%	39.05%
TCS	3196.00	-99.60	-3.02%	41.59	1335.64	4322.95	26.07%	2866.60	11.49%	1.77%	-19.52%
TECHM	1575.90	-49.30	-3.03%	16.57	264.12	1736.40	9.24%	1209.40	30.30%	3.46%	-3.62%
TITAN	4242.20	-31.00	-0.73%	10.56	450.84	4312.10	1.62%	2925.00	45.03%	12.06%	23.13%
TRENT	3980.00	-80.50	-1.98%	8.63	346.92	7085.00	43.82%	3930.10	1.27%	-2.93%	-41.98%
ULTRACEMCO	12064.00	-120.00	-0.98%	2.29	276.79	13097.00	7.89%	10047.85	20.07%	5.06%	5.91%
WIPRO	261.90	-8.90	-3.29%	92.68	245.45	324.60	19.32%	228.00	14.87%	4.19%	-7.99%

## Disclaimer / Disclosures

### ANALYST CERTIFICATION

I, Mrs. Vaishali Parekh B.com, Research Analyst, author and the name subscribed to this report, hereby certify that all of the views expressed in this research report accurately reflect our views about the subject issuer(s) or securities. We also certify that no part of our compensation was, is, or will be directly or indirectly related to the specific recommendation(s) or view(s) in this report.

Terms & conditions and other disclosures:

Prabhudas Lilladher Pvt. Ltd, Mumbai, India (hereinafter referred to as “PL”) is engaged in the business of Stock Broking, Portfolio Manager, Depository Participant and distribution for third party financial products. PL is a subsidiary of Prabhudas Lilladher Advisory Services Pvt Ltd. which has its various subsidiaries engaged in business of commodity broking, investment banking, financial services (margin funding) and distribution of third party financial/other products, details in respect of which are available at [www.plindia.com](http://www.plindia.com)

This document has been prepared by the Research Division of PL and is meant for use by the recipient only as information and is not for circulation. This document is not to be reported or copied or made available to others without prior permission of PL. It should not be considered or taken as an offer to sell or a solicitation to buy or sell any security.

The information contained in this report has been obtained from sources that are considered to be reliable. However, PL has not independently verified the accuracy or completeness of the same. Neither PL nor any of its affiliates, its directors or its employees accepts any responsibility of whatsoever nature for the information, statements and opinion given, made available or expressed herein or for any omission therein.

Recipients of this report should be aware that past performance is not necessarily a guide to future performance and value of investments can go down as well. The suitability or otherwise of any investments will depend upon the recipient's particular circumstances and, in case of doubt, advice should be sought from an independent expert/advisor.

Either PL or its affiliates or its directors or its employees or its representatives or its clients or their relatives may have position(s), make market, act as principal or engage in transactions of securities of companies referred to in this report and they may have used the research material prior to publication.

PL may from time to time solicit or perform investment banking or other services for any company mentioned in this document.

PL is registered as Research Analyst under Securities and Exchange Board of India (Research Analysts) Regulations, 2014 PL submits that no material disciplinary action has been taken on us by any Regulatory Authority impacting Equity Research Analysis activities.

PL or its research analysts or its associates or his relatives do not have any financial interest in the subject company.

PL or its research analysts or its associates or his relatives do not have actual/beneficial ownership of one per cent or more securities of the subject company at the end of the month immediately preceding the date of publication of the research report.

PL or its research analysts or its associates or his relatives do not have any material conflict of interest at the time of publication of the research report.

PL or its associates might have received compensation from the subject company in the past twelve months.

PL or its associates might have managed or co-managed public offering of securities for the subject company in the past twelve months or mandated by the subject company for any other assignment in the past twelve months.

PL or its associates might have received any compensation for investment banking or merchant banking or brokerage services from the subject company in the past twelve months.

PL or its associates might have received any compensation for products or services other than investment banking or merchant banking or brokerage services from the subject company in the past twelve months PL or its associates might have received any compensation or other benefits from the subject company or third party in connection with the research report.

PL encourages independence in research report preparation and strives to minimize conflict in preparation of research report. PL or its analysts did not receive any compensation or other benefits from the subject Company or third party in connection with the preparation of the research report. PL or its Research Analysts do not have any material conflict of interest at the time of publication of this report.

It is confirmed that Mrs. Vaishali Parekh B.com, Research Analyst of this report has not received any compensation from the companies mentioned in the report in the preceding twelve months compensation of our Research Analysts is not based on any specific merchant banking, investment banking or brokerage service transactions.

The Research analysts for this report certifies that all of the views expressed in this report accurately reflect his or her personal views about the subject company or companies and its or their securities, and no part of his or her compensation was, is or will be, directly or indirectly related to specific recommendations or views expressed in this report.

The research analysts for this report has not served as an officer, director or employee of the subject company PL or its research analysts have not engaged in market making activity for the subject company

Our sales people, traders, and other professionals or affiliates may provide oral or written market commentary or trading strategies to our clients that reflect opinions that are contrary to the opinions expressed herein, and our proprietary trading and investing businesses may make investment decisions that are inconsistent with the recommendations expressed herein. In reviewing these materials, you should be aware that any or all of the foregoing, among other things, may give rise to real or potential conflicts of interest.

PL and its associates, their directors and employees may (a) from time to time, have a long or short position in, and buy or sell the securities of the subject company or (b) be engaged in any other transaction involving such securities and earn brokerage or other compensation or act as a market maker in the financial instruments of the subject company or act as an advisor or lender/borrower to the subject company or may have any other potential conflict of interests with respect to any recommendation and other related information and opinions.

**Regd. Office:** 3<sup>rd</sup> Floor, Sadhana House, 570, P. B. Marg, Behind Mahindra Tower, Worli, Mumbai - 400 018, India.