

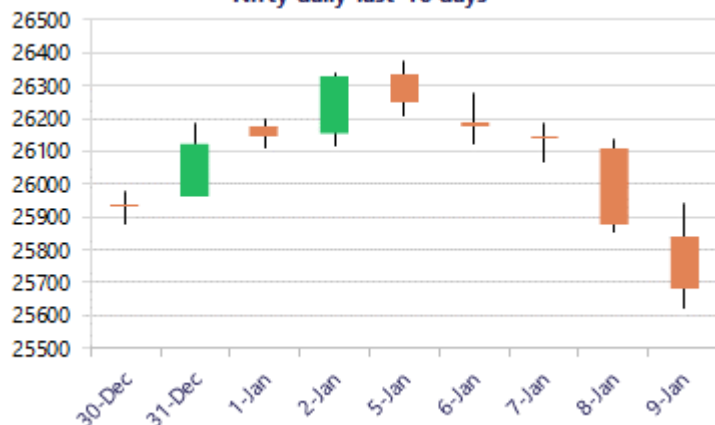
Date: 12th January 2026

* Sensex 83576.24 - 604.72

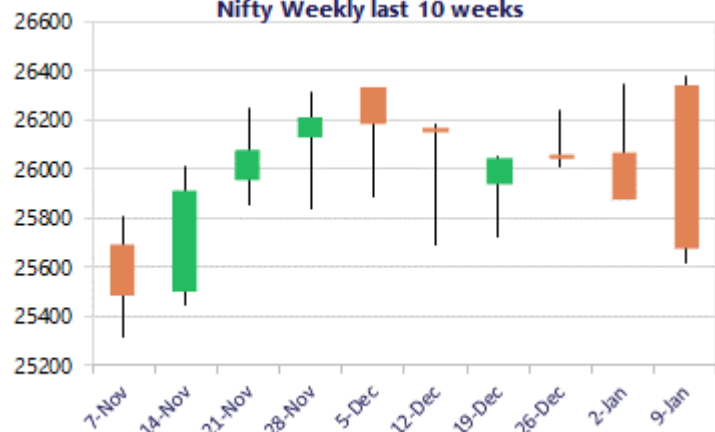
* Nifty 25683.30 - 193.55

* Bank Nifty 59251.55 - 434.95

Nifty daily last 10 days



Nifty Weekly last 10 weeks



*Blue candle → Close rate > Open rate * Red candle → Close rate < Open rate

Market Preview

Nifty bleeds; ends below 25700 zone

Nifty extended the losses further to witness 5 consecutive sessions of losing streak closing below the 25700 level with bias and sentiment maintained with a very cautious view. BankNifty plunged to slide further with profit booking seen with bias turning weak closing near the 59250 zone. The market breadth was weak with the advance decline indicating a ratio of 1:3 at close.

Market Forecast

Nifty daily range 25500-25900

Nifty, witnessed another session of heavy profit booking to tank further breaching the 25700 zone with bias and sentiment getting into a nervous situation with next major and crucial support positioned near the important 200 period MA at 25000 zone. With anxious movement creeping in, the index is precariously placed with immediate support maintained near the 100 period MA at 25500 level which needs to be sustained as of now failing which there can be further intensified selling pressure.

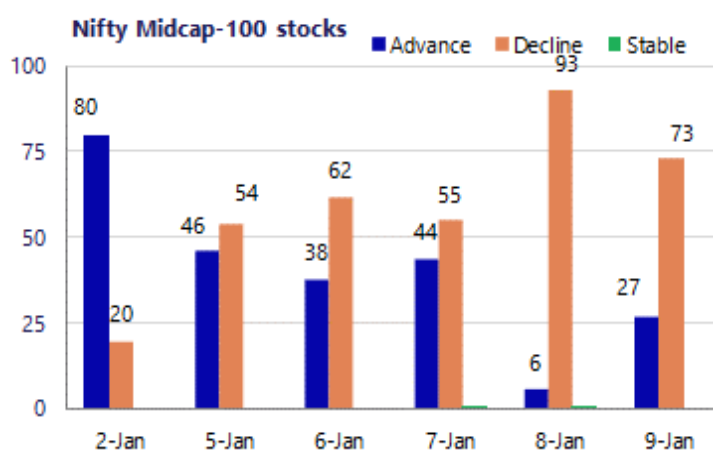
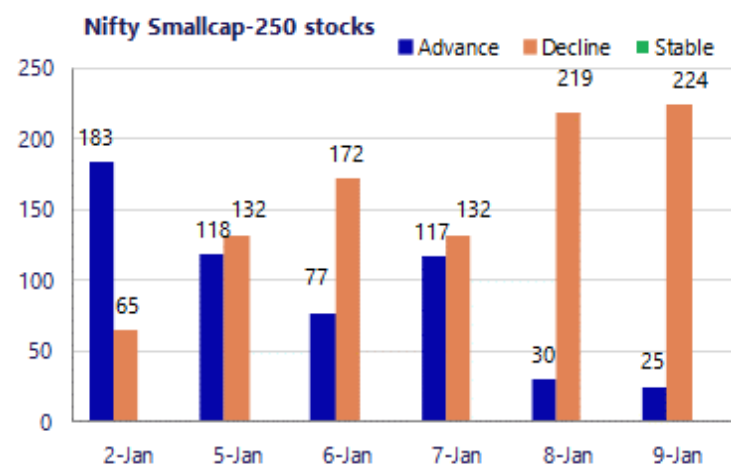
BankNifty slipped further during the session with profit booking seen among the major frontline banking stocks during the session to end near the low at 59250 level weakening the bias and sentiment. The index would have the important near-term support at 58700 zone which needs to sustain to maintain the overall bias intact failing which shall trigger for further slide having the next major support near the important 200 period MA at 56300 zone.

The support for the day is seen at 25500 levels, while the resistance is seen at 25900 levels. BankNifty would have the daily range of 58700-59700 levels.

Sensex	Period	Closing	% Chng	Trend	Reversal	2 Sup	1 Sup	Pivot	1 Res	2 Res
Nifty	Daily	25683.30	-0.75%	-3	26118.10	25431	25557	25749	25875	26067
	Weekly	25683.30	-2.45%	-1	26393.20	25145	25414	25894	26163	26642
	Monthly	26129.60	-0.28%	3	25829.00	25419	25774	26050	26405	26681
Bank Nifty	Daily	59251.55	-0.73%	-1	60201.10	58796	59024	59382	59609	59967
	Weekly	59251.55	-1.50%	-1	60482.70	58367	58809	59601	60043	60835
	Monthly	59581.85	-0.29%	3	58708.70	58069	58825	59469	60226	60870
Sensex	Daily	83576.24	-0.72%	-4	84780.00	82791	83184	83795	84188	84799
	Weekly	83576.24	-2.55%	-1	86158.60	81807	82692	84287	85172	86767
	Monthly	85220.60	-0.57%	3	84363.05	83208	84214	85159	86166	87111

Gainers - Losers (Nifty 500 Stocks)

Gainers				Losers			
Company Name	Last Price	% Gain	Volume	Company Name	Last Price	% Loss	Volume
CCL Products	942.4	1.83%	470517	Adani Green Ene	946.10	-4.32%	2325816
Ashok Leyland	187.76	1.76%	25409220	360 ONE WAM	1140.9	-3.55%	1067665
ABB India	5093	1.43%	329316	Anant Raj	551.10	-3.50%	2224163
Asian Paints	2,825.50	1.40%	1657318	Cohance Life	475.90	-3.44%	855525
BHEL	274.25	0.92%	62954160	Adani Energy	960.60	-3.39%	967396
Balrampur Chini	429.75	0.76%	204081	Afcons Infra	363.05	-3.35%	1338252
Bank of Mah	62.48	0.74%	15086625	Angel One	2333.5	-3.28%	807458



Nifty Daily chart with RSI indicator



BankNifty Daily chart with RSI indicator



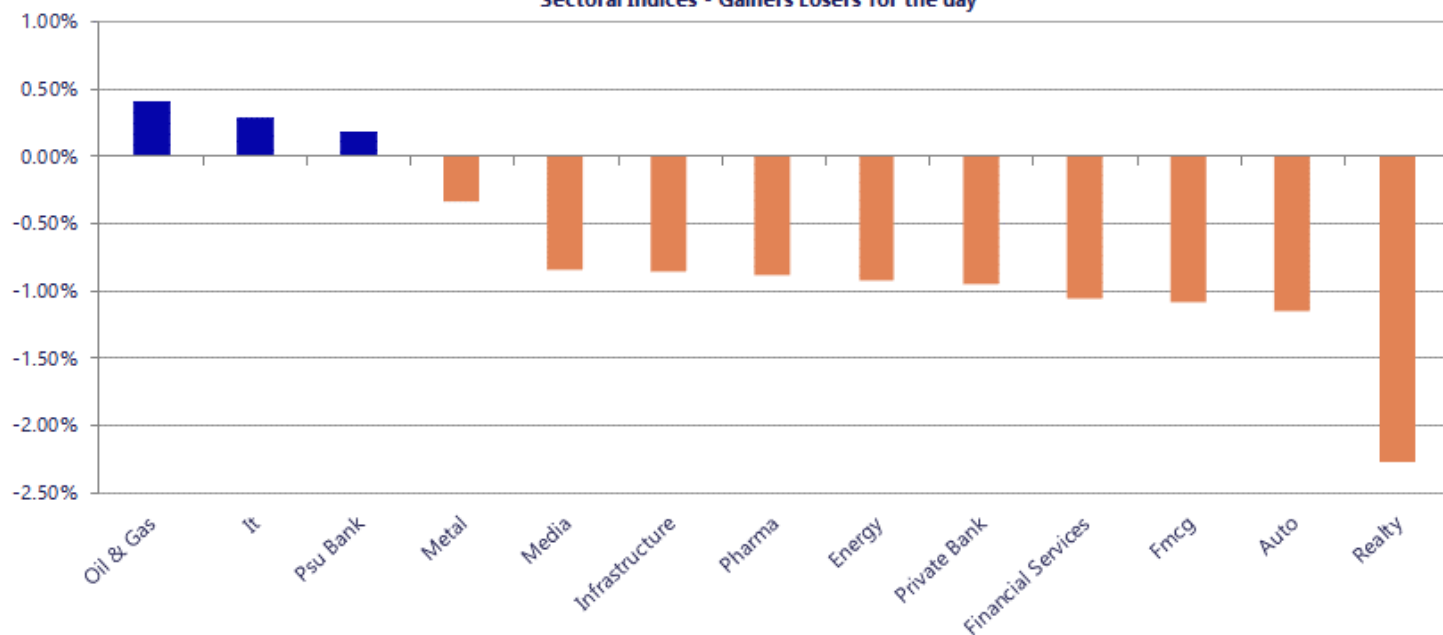
Breakouts - Cross above 200 DMA			
Company Name	LCP	Change %	200 DMA
Krystal Integra	623.9	5.60	590.83
Good Luck	1104	5.58	1045.68
Vipul	10.8	4.55	10.33
Andhra Cement	73.24	4.40	70.15
Shanthala	32.9	3.88	31.67
Kaya	385.75	2.16	377.6
Cigniti Tech	1654.4	2.00	1621.95
Rachana Infra	37.2	1.97	36.48
Aarey Drugs	69.18	1.89	67.9
Indo Farm Equip	200.43	1.44	197.58
Coromandel Int	2309.1	1.06	2284.85
Oil India	420.8	0.71	417.85
Sanstar	92.25	0.23	92.04
Entero Health	1180	0.17	1178.05
Venkys	1537.6	0.16	1535.12
Lokesh Machines	183.01	0.08	182.86
Sadhav Shipping	105	0.03	104.97

* Stocks crossing above its Simple Moving Average (200DMA)

Breakdown - Cross below 200 DMA			
Company Name	LCP	Change %	200 DMA
Panacea Biotech	405.55	-5.79	430.47
Nakoda Group	28.7	-5.06	30.23
Mindteck	211.81	-4.08	220.81
Supreme Power	178	-3.92	185.27
Vishnusurya Pro	166.1	-3.74	172.56
J. K. Cement	5730	-3.72	5951.38
Readymix Constr	110.5	-3.68	114.72
TechEra Enginee	196	-3.44	202.99
Tarapur Trans	28.13	-3.43	29.13
Banaras Beads	120	-3.09	123.83
Interarch Build	2030.1	-3.02	2093.32
Zuari Ind.	293.55	-3.01	302.65
Tirupati Forge	36.25	-3.00	37.37
Marinetrans Ind	21	-2.87	21.62
Total Transport	72.53	-2.71	74.55
Heritage Foods	447.15	-2.53	458.74
Keynote Finance	287.35	-2.46	294.59
DOMS Industries	2495.5	-2.29	2553.88

* Stocks crossing below its Simple Moving Average (200DMA)

Sectoral Indices - Gainers Losers for the day



Stocks witnessing a volume surge as compared to their 5 day average

Watch out for the stocks that have seen a huge spurt in its share price over the last three days

Volume Shockers - NSE					
Company name	LCP	% Chg	Volume	Avg Vol *	% Chg
Mastek	2051.7	-0.62	178200	1710	10319
Suprajit Eng	458.3	0.11	278583	2691	10251
Gujarat Fluoro	3442.85	-1.47	166743	1978	8331
Asian Energy	264.9	3.42	155529	2118	7245
Krystal Integra	638.2	20	264188	4038	6443
Andhra Cement	73.29	6.26	99204	2250	4310
Modern Eng	31.52	0.74	74732	1793	4068
Soma Papers	243.2	4.99	96922	3127	3000
MTAR	2689.95	6.76	327444	13418	2340
AION-TECH	48.99	-1.74	71738	3335	2051
Bhakti Gems	44.15	3.13	476558	22660	2003
Blue Dart	5383.8	-0.21	102503	5305	1832
Krishna Institu	620.45	1.78	70481	4103	1618
Triveni Turbine	518.8	-2.2	239664	15573	1439
Toss the Coin	333	-9.76	22200	1500	1380
Winsome Textile	73.51	-2.3	102160	7253	1309
Netlink Sol	177.9	19.48	17770	1265	1305
Senco Gold	353.7	2.17	420804	32364	1200
Choksi Labs	110	-13.25	27879	2185	1176
Tech Mahindra	1581.6	0.26	365583	29234	1151
Prestige Estate	1566.1	-1.36	344570	28675	1102

Price Shockers - NSE				
Company name	LCP	Prv Close	% Chg	Volume
Sangam Finserv	43.4	30.23	43.57	87886
Palm Jewels	22.65	16.94	33.71	77658
Krystal Integra	638.2	504.7	26.45	264188
Ravi Leela Gran	53	42.38	25.06	39765
Golkonda Alum	10.2	8.39	21.57	69434
Ausom Enterp	132	109.15	20.93	89298
Netlink Sol	177.9	147.75	20.41	17770
Sanghvi Brands	14.11	11.76	19.98	5000
PG Foils	233.1	200.25	16.4	93527
JHS Svendgaard	10.56	9.08	16.3	37099
Silver Touch Te	1670	1438.55	16.09	85572
Photoquip India	14.5	12.5	16	0
Trade Wings	594.7	513.8	15.75	272
Le Lavoir	186.35	161	15.75	3103
Stellant Sec	517.9	447.45	15.74	2885
Kinetic Trust	61.17	52.85	15.74	1050
Hypersoft Techn	82.64	71.4	15.74	21756
Spice Islands	217.8	188.2	15.73	27845
Soma Papers	243.2	210.15	15.73	96922
Jindal Leasefin	50.56	43.69	15.72	574
Adcounty Media	125.2	108.2	15.71	4800

Nifty 50 stocks - Summary Details											
Symbol	LTP	Chng	% Chng	Volume (lacs)	Turnover (crs.)	52w High	Diff with 52w H	52w Low	Diff with 52w L	30 days % chng	365 days % chng
NIFTY 50	25683.30	-193.55	-0.75%	3487.47	27485.66	26373.20	2.62%	21743.65	18.12%	-0.32%	9.15%
ADANIENT	2156.60	-57.40	-2.59%	15.70	341.29	2616.50	17.58%	1967.52	9.61%	-0.10%	-12.16%
ADANIPTS	1434.40	-30.80	-2.10%	22.80	329.17	1549.00	7.40%	1010.75	41.91%	-1.03%	24.80%
APOLLOHOSP	7255.00	-109.50	-1.49%	3.12	227.82	8099.50	10.43%	6001.00	20.90%	3.78%	-0.97%
ASIANPAINT	2838.90	52.40	1.88%	16.57	468.92	2985.70	4.92%	2124.75	33.61%	-4.84%	21.54%
AXISBANK	1274.50	-12.30	-0.96%	55.31	705.32	1304.60	2.31%	933.50	36.53%	1.02%	20.54%
BAJAJ-AUTO	9578.50	-182.00	-1.86%	2.51	242.53	9888.00	3.13%	7089.35	35.11%	8.14%	10.79%
BAJAJFINSV	1989.10	-19.80	-0.99%	11.44	227.99	2195.00	9.38%	1617.00	23.01%	-2.44%	19.38%
BAJFINANCE	961.50	-10.45	-1.08%	75.99	735.38	1102.50	12.79%	710.52	35.32%	-5.30%	-86.78%
BEL	417.95	2.30	0.55%	229.62	965.15	436.00	4.14%	240.25	73.96%	7.57%	44.83%
BHARTIARTL	2031.10	-35.20	-1.70%	41.65	851.82	2174.50	6.59%	1559.50	30.24%	-0.95%	29.89%
CIPLA	1466.00	5.40	0.37%	18.04	264.00	1673.00	12.37%	1335.00	9.81%	-2.47%	-2.46%
COALINDIA	419.90	-5.35	-1.26%	73.05	308.26	436.70	3.85%	349.25	20.23%	12.69%	11.97%
DRREDDY	1212.90	6.00	0.50%	13.91	168.39	1405.90	13.73%	1020.00	18.91%	-4.71%	-10.70%
EICHERMOT	7510.00	-41.00	-0.54%	4.75	358.83	7613.50	1.36%	4646.00	61.64%	5.73%	45.85%
ETERNAL	284.70	1.15	0.41%	558.52	1605.96	368.45	22.73%	194.80	46.15%	-0.60%	#VALUE!
GRASIM	2773.00	-19.00	-0.68%	5.56	154.73	2977.80	6.88%	2276.95	21.79%	1.74%	13.16%
HCLTECH	1662.10	15.40	0.94%	32.81	546.17	2012.20	17.40%	1302.75	27.58%	-2.48%	-14.05%
HDFCBANK	939.00	-7.70	-0.81%	381.84	3592.70	1020.50	7.99%	812.15	15.62%	-5.62%	-44.75%
HDFCLIFE	750.00	-8.15	-1.07%	32.68	245.79	820.75	8.62%	584.30	28.36%	-0.77%	22.31%
HINDALCO	904.00	0.05	0.01%	43.20	388.68	970.80	6.88%	546.45	65.43%	10.31%	54.65%
HINDUNILVR	2369.20	-17.50	-0.73%	11.89	282.30	2750.00	13.85%	2136.00	10.92%	3.14%	-0.17%
ICICIBANK	1405.00	-30.00	-2.09%	125.55	1767.57	1500.00	6.33%	1186.00	18.47%	3.27%	12.18%
INDIGO	4842.00	-64.50	-1.31%	12.57	611.27	6232.50	22.31%	3945.00	22.74%	-0.35%	13.35%
INFY	1616.90	3.60	0.22%	68.16	1101.77	1982.80	18.45%	1307.00	23.71%	0.16%	-16.45%
ITC	338.25	-2.65	-0.78%	351.93	1189.84	471.50	28.26%	336.10	0.64%	-15.26%	-22.72%
JIOFIN	287.55	-6.00	-2.04%	113.74	330.04	338.60	15.08%	198.65	44.75%	-1.23%	-1.87%
JSWSTEEL	1160.20	4.30	0.37%	13.87	161.05	1223.90	5.20%	880.00	31.84%	3.29%	26.77%
KOTAKBANK	2127.90	-5.10	-0.24%	20.64	438.30	2301.90	7.56%	1723.75	23.45%	0.07%	20.37%
LT	4019.80	-8.60	-0.21%	17.18	693.51	4195.00	4.18%	2965.30	35.56%	0.79%	10.57%
M&M	3679.00	-45.00	-1.21%	12.36	456.90	3839.90	4.19%	2425.00	51.71%	1.15%	19.79%
MARUTI	16500.00	-164.00	-0.98%	2.86	472.76	17370.00	5.01%	11059.45	49.19%	2.95%	42.17%
MAXHEALTH	1017.10	-12.70	-1.23%	25.74	261.80	1314.30	22.61%	940.05	8.20%	-4.60%	-14.07%
NESTLEIND	1299.00	-7.90	-0.60%	11.94	155.07	1332.70	2.53%	1055.00	23.13%	7.58%	-40.94%
NTPC	336.50	-7.90	-2.29%	101.61	343.23	371.45	9.41%	292.80	14.92%	7.79%	4.81%
ONGC	234.10	2.68	1.16%	127.06	297.99	273.50	14.41%	205.00	14.20%	-2.98%	-12.17%
POWERGRID	259.10	-0.20	-0.08%	141.01	366.52	322.00	19.53%	247.30	4.77%	-2.22%	-15.00%
RELIANCE	1476.00	5.40	0.37%	83.34	1226.88	1611.80	8.43%	1114.85	32.39%	-4.69%	18.52%
SBILIFE	2075.00	-7.90	-0.38%	4.55	94.51	2109.60	1.64%	1372.55	51.18%	3.08%	40.95%
SBIN	1000.05	2.05	0.21%	78.09	782.32	1024.00	2.34%	680.00	47.07%	4.35%	28.15%
SHRIRAMFIN	977.30	-15.60	-1.57%	69.49	679.68	1025.60	4.71%	493.35	98.09%	19.02%	-66.44%
SUNPHARMA	1737.00	-23.70	-1.35%	15.86	275.37	1862.60	6.74%	1548.00	12.21%	-1.98%	-5.00%
TATACONSUM	1178.90	-18.50	-1.55%	5.56	65.96	1220.90	3.44%	926.05	27.30%	4.50%	25.38%
TMPV	355.15	-4.30	-1.20%	80.19	285.16	810.00	56.15%	337.70	5.17%	3.20%	#VALUE!
TATASTEEL	178.50	-1.62	-0.90%	253.17	453.74	187.85	4.98%	122.62	45.57%	10.19%	35.04%
TCS	3212.60	8.70	0.27%	19.38	622.14	4322.95	25.69%	2866.60	12.07%	-1.01%	-20.47%
TECHM	1583.20	5.30	0.34%	14.10	223.55	1736.40	8.82%	1209.40	30.91%	-0.87%	-5.58%
TITAN	4205.00	-44.00	-1.04%	8.83	372.20	4312.10	2.48%	2925.00	43.76%	12.80%	21.22%
TRENT	3983.00	-7.40	-0.19%	7.69	306.21	6873.50	42.05%	3930.10	1.35%	-2.45%	-41.95%
ULTRACEMCO	11914.00	-150.00	-1.24%	2.64	314.97	13097.00	9.03%	10047.85	18.57%	4.54%	3.83%
WIPRO	262.50	0.30	0.11%	47.35	124.15	324.60	19.13%	228.00	15.13%	0.31%	-10.83%

Disclaimer / Disclosures

ANALYST CERTIFICATION

I, Mrs. Vaishali Parekh B.com, Research Analyst, author and the name subscribed to this report, hereby certify that all of the views expressed in this research report accurately reflect our views about the subject issuer(s) or securities. We also certify that no part of our compensation was, is, or will be directly or indirectly related to the specific recommendation(s) or view(s) in this report.

Terms & conditions and other disclosures:

Prabhudas Lilladher Pvt. Ltd, Mumbai, India (hereinafter referred to as "PL") is engaged in the business of Stock Broking, Portfolio Manager, Depository Participant and distribution for third party financial products. PL is a subsidiary of Prabhudas Lilladher Advisory Services Pvt Ltd. which has its various subsidiaries engaged in business of commodity broking, investment banking, financial services (margin funding) and distribution of third party financial/other products, details in respect of which are available at www.plindia.com

This document has been prepared by the Research Division of PL and is meant for use by the recipient only as information and is not for circulation. This document is not to be reported or copied or made available to others without prior permission of PL. It should not be considered or taken as an offer to sell or a solicitation to buy or sell any security.

The information contained in this report has been obtained from sources that are considered to be reliable. However, PL has not independently verified the accuracy or completeness of the same. Neither PL nor any of its affiliates, its directors or its employees accepts any responsibility of whatsoever nature for the information, statements and opinion given, made available or expressed herein or for any omission therein.

Recipients of this report should be aware that past performance is not necessarily a guide to future performance and value of investments can go down as well. The suitability or otherwise of any investments will depend upon the recipient's particular circumstances and, in case of doubt, advice should be sought from an independent expert/advisor.

Either PL or its affiliates or its directors or its employees or its representatives or its clients or their relatives may have position(s), make market, act as principal or engage in transactions of securities of companies referred to in this report and they may have used the research material prior to publication.

PL may from time to time solicit or perform investment banking or other services for any company mentioned in this document.

PL is registered as Research Analyst under Securities and Exchange Board of India (Research Analysts) Regulations, 2014 PL submits that no material disciplinary action has been taken on us by any Regulatory Authority impacting Equity Research Analysis activities.

PL or its research analysts or its associates or his relatives do not have any financial interest in the subject company.

PL or its research analysts or its associates or his relatives do not have actual/beneficial ownership of one per cent or more securities of the subject company at the end of the month immediately preceding the date of publication of the research report.

PL or its research analysts or its associates or his relatives do not have any material conflict of interest at the time of publication of the research report.

PL or its associates might have received compensation from the subject company in the past twelve months.

PL or its associates might have managed or co-managed public offering of securities for the subject company in the past twelve months or mandated by the subject company for any other assignment in the past twelve months.

PL or its associates might have received any compensation for investment banking or merchant banking or brokerage services from the subject company in the past twelve months.

PL or its associates might have received any compensation for products or services other than investment banking or merchant banking or brokerage services from the subject company in the past twelve months PL or its associates might have received any compensation or other benefits from the subject company or third party in connection with the research report.

PL encourages independence in research report preparation and strives to minimize conflict in preparation of research report. PL or its analysts did not receive any compensation or other benefits from the subject Company or third party in connection with the preparation of the research report. PL or its Research Analysts do not have any material conflict of interest at the time of publication of this report.

It is confirmed that Mrs. Vaishali Parekh B.com, Research Analyst of this report has not received any compensation from the companies mentioned in the report in the preceding twelve months compensation of our Research Analysts is not based on any specific merchant banking, investment banking or brokerage service transactions.

The Research analysts for this report certifies that all of the views expressed in this report accurately reflect his or her personal views about the subject company or companies and its or their securities, and no part of his or her compensation was, is or will be, directly or indirectly related to specific recommendations or views expressed in this report.

The research analysts for this report has not served as an officer, director or employee of the subject company PL or its research analysts have not engaged in market making activity for the subject company

Our sales people, traders, and other professionals or affiliates may provide oral or written market commentary or trading strategies to our clients that reflect opinions that are contrary to the opinions expressed herein, and our proprietary trading and investing businesses may make investment decisions that are inconsistent with the recommendations expressed herein. In reviewing these materials, you should be aware that any or all of the foregoing, among other things, may give rise to real or potential conflicts of interest.

PL and its associates, their directors and employees may (a) from time to time, have a long or short position in, and buy or sell the securities of the subject company or (b) be engaged in any other transaction involving such securities and earn brokerage or other compensation or act as a market maker in the financial instruments of the subject company or act as an advisor or lender/borrower to the subject company or may have any other potential conflict of interests with respect to any recommendation and other related information and opinions.

Regd. Office: 3rd Floor, Sadhana House, 570, P. B. Marg, Behind Mahindra Tower, Worli, Mumbai - 400 018, India.