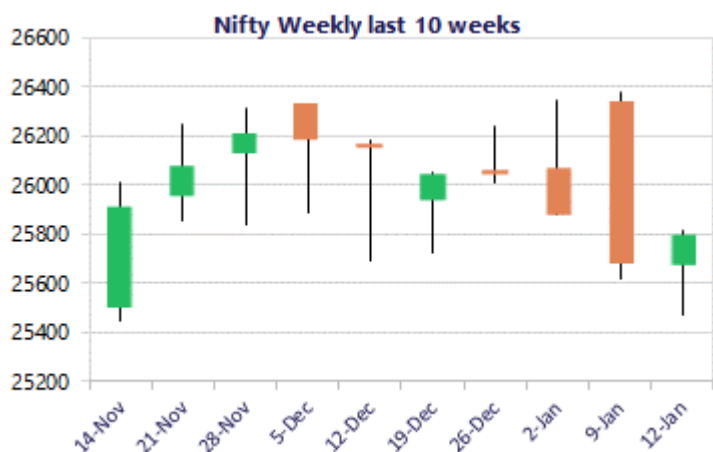
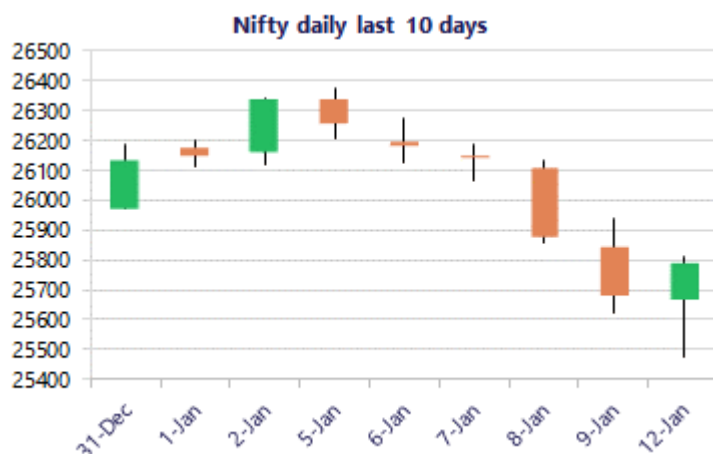


Date: 13th January 2026

* Sensex 83878.17 + 301.93

* Nifty 25790.25 + 106.95

* Bank Nifty 59450.50 + 198.95



*Blue candle → Close rate > Open rate * Red candle → Close rate < Open rate

Market Preview

Nifty witnesses strong recovery

Nifty witnessed a weak morning session thereafter, to stage a strong recovery during the lunch session to close in the green near 25800 zone to erase the losses. BankNifty once again sustained the important support near 58800 zone and bounced back to close in the green near 59450 level to slightly improve the bias. The market breadth was slight weak with the advance decline indicating a ratio of 2:3 at close.

Market Forecast

Nifty daily range 25650-26000

Nifty, witnessed a volatile session with the initial half sliding down to extend the losses with weak cues to hit the low near 25475 zone thereafter, to surge ahead strongly to recover the intraday loss and closed in the green near 25800 level in anticipation of some positive cues from the Indo-US tariff talks. The index would have the major and crucial support positioned near the important 200 period MA at 25000 zone, as mentioned earlier, and on the upside would need to breach above the important 50EMA level at 25900 zone to improve the bias overall.

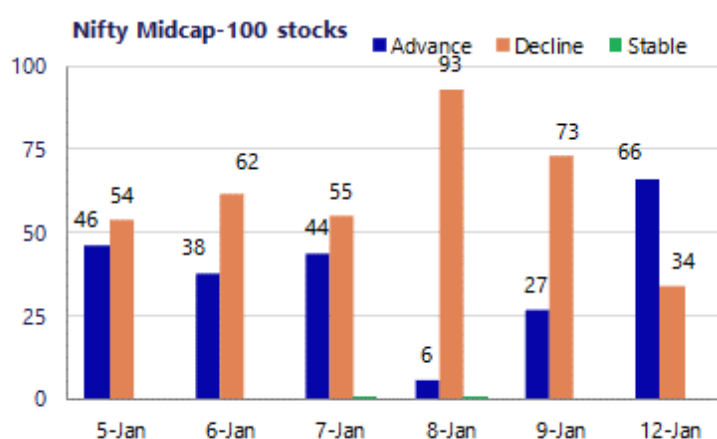
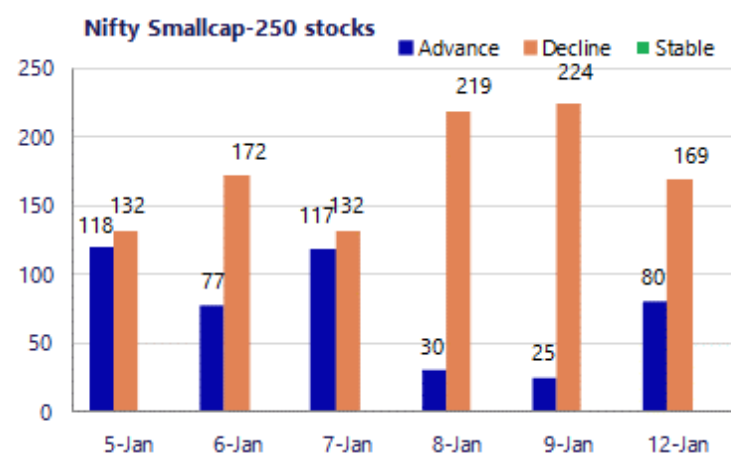
BankNifty witnessing a weak morning session slipped further to hit the important 50EMA level at 58900 zone and thereafter, witnessed a strong bounce back to race ahead and close in the green near the 59450 level to improve the bias to some extent. The index have so far sustained near the important near-term support of 58800 zone to maintain the overall bias intact and on the upside, as said earlier, would need a decisive close above the 60000 zone to trigger for fresh upward move in the coming days.

The support for the day is seen at 25650 levels, while the resistance is seen at 26000 levels. BankNifty would have the daily range of 59000-60000 levels.

Sensex	Period	Closing	% Chng	Trend	Reversal	2 Sup	1 Sup	Pivot	1 Res	2 Res
Nifty	Daily	25790.25	0.42%	-4	26025.20	25353	25571	25692	25911	26032
	Weekly	25683.30	-2.45%	-1	26393.20	25145	25414	25894	26163	26642
	Monthly	26129.60	-0.28%	3	25829.00	25419	25774	26050	26405	26681
Bank Nifty	Daily	59450.50	0.34%	-3	60017.10	58608	59029	59285	59706	59962
	Weekly	59251.55	-1.50%	-1	60482.70	58367	58809	59601	60043	60835
	Monthly	59581.85	-0.29%	3	58708.70	58069	58825	59469	60226	60870
Sensex	Daily	83878.17	0.36%	-5	84519.60	82466	83172	83567	84273	84668
	Weekly	83576.24	-2.55%	-1	86158.60	81807	82692	84287	85172	86767
	Monthly	85220.60	-0.57%	3	84363.05	83208	84214	85159	86166	87111

Gainers - Losers (Nifty 500 Stocks)

Gainers				Losers			
Company Name	Last Price	% Gain	Volume	Company Name	Last Price	% Loss	Volume
BSE Limited	2790.6	4.54%	7687782	Apar Ind	7,855.00	-4.07%	96539
Chennai Petro	809.00	3.36%	1072510	Amber Enterpris	6118.5	-3.33%	368359
Coal India	432.3	3.33%	14402909	Aditya Birla Re	1,569.30	-3.19%	583208
Anant Raj	568.45	3.15%	3235297	AFFLE 3I	1,727.00	-3.19%	339085
Asian Paints	2,896.40	2.51%	1743849	Bharti Hexacom	1,705.90	-3.16%	112761
Balkrishna Ind	2,413.40	2.26%	88847	Balrampur Chini	417.2	-2.92%	334845
Bank of Mah	63.77	2.06%	34548715	Bajaj Holdings	10745	-2.70%	133194



Nifty Daily chart with RSI indicator



BankNifty Daily chart with RSI indicator



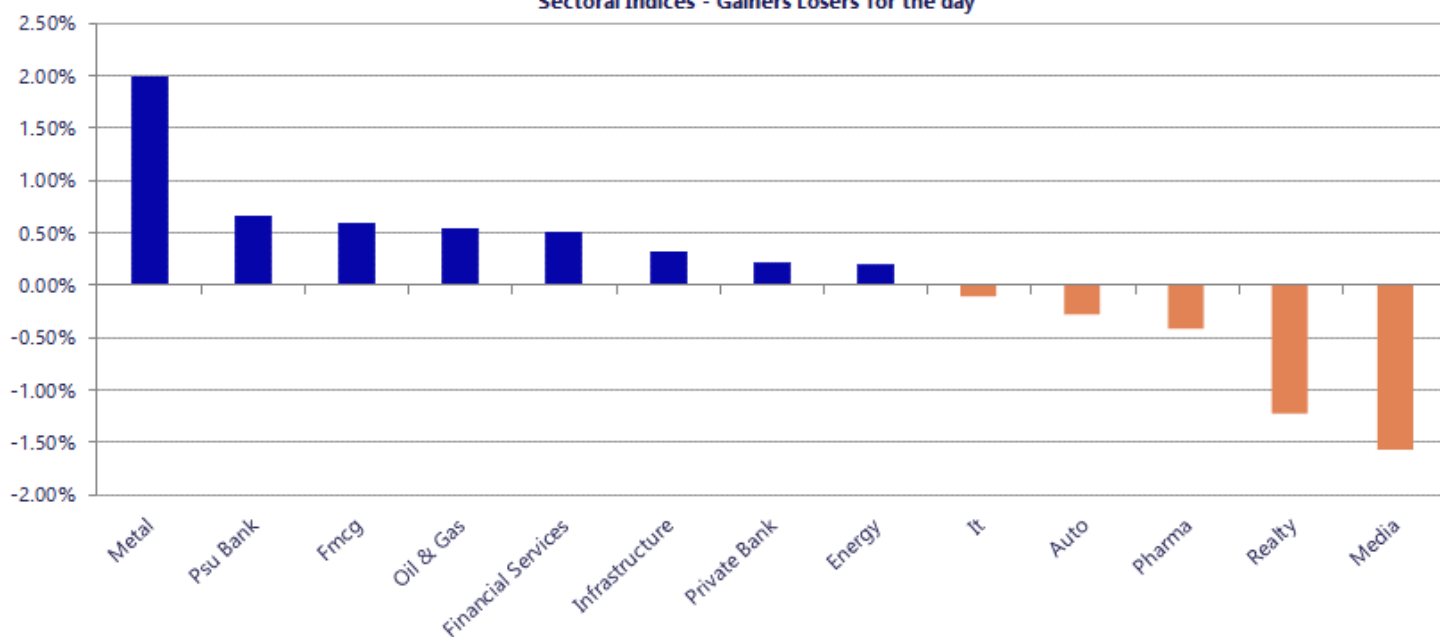
Breakouts - Cross above 200 DMA			
Company Name	LCP	Change %	200 DMA
Maithan Alloys	1113.8	5.44	1056.35
Ravindra Energy	149.61	4.59	143.05
Venkys	1602	4.40	1534.53
Tembo Global	592.95	3.96	570.38
Entero Health	1216.5	3.26	1178.1
Nagreeka Cap	28.6	3.21	27.71
Centum Electron	2374.9	3.15	2302.34
Latteys Industr	22.83	2.93	22.18
Interarch Build	2153.5	2.74	2096.03
Medplus Health	849.3	2.59	827.87
IFCI	55.22	2.30	53.98
Medicamen Bio	402	2.16	393.51
Dynamic Service	140.9	1.92	138.24
Barak Vally Cem	43.76	1.91	42.94
5paisa Capita	370.1	1.78	363.63
Anjani Portland	133.9	1.45	131.98
UltraTechCement	12080	1.08	11950.39
Modison	154.1	0.88	152.75

* Stocks crossing above its Simple Moving Average (200DMA)

Breakdown - Cross below 200 DMA			
Company Name	LCP	Change %	200 DMA
Purple United	345	-6.30	368.21
Anlon Technolog	369	-4.77	387.5
Ducol Organics	137	-4.64	143.67
Kavveri Defence	69.78	-4.41	73
Andhra Cement	67.25	-4.24	70.23
Aarey Drugs	65.91	-3.17	68.07
Arihant Capital	88	-3.11	90.82
Indo Farm Equip	191.68	-3.08	197.77
Yatharth HOSP	628.75	-2.37	643.99
Rachana Infra	35.65	-2.33	36.5
Bharti Hexacom	1707.4	-2.05	1743.07
India Nippon	779.9	-2.00	795.85
DDEVPLASTIK	287.7	-1.96	293.44
Apar Ind	7887.5	-1.70	8023.89
Greenlam Ind	239.54	-1.66	243.58
Lokesh Machines	180.1	-1.62	183.07
Quality Power	688	-1.59	699.11
Natco Pharma	861.8	-1.54	875.29

* Stocks crossing below its Simple Moving Average (200DMA)

Sectoral Indices - Gainers Losers for the day



Stocks witnessing a volume surge as compared to their 5 day average

Watch out for the stocks that have seen a huge spurt in its share price over the last three days

Volume Shockers - NSE					
Company name	LCP	% Chg	Volume	Avg Vol *	% Chg
Maithan Alloys	1089.7	12.7	500653	1730	28839
JTL Ind.	61.57	19.46	5641884	41590	13466
Atlanta	45.05	-3.24	415580	6800	6011
Centum Electron	2340	12.11	53769	1172	4487
IFCI	55.9	14.08	22680353	497916	4455
Metropolis	1877.25	-2.47	116166	3907	2873
IMEC Services	308.6	4.77	62977	2313	2623
Can Fin Homes	882.55	-0.8	307697	11625	2547
Chalet Hotels	858.9	-1.57	608660	25584	2279
Bhakti Gems	45.6	3.42	510652	22660	2154
C E Info	1551.65	-2.96	232680	10527	2110
Sigma Solve	57.59	-5.05	24263	1373	1667
Shakti Pumps	723.25	5.48	1173012	66880	1654
Tejas Networks	377.05	-9.52	1433807	83177	1624
Faze Three	406.3	16.44	57501	3338	1623
Innova Captab	690.15	-1.59	101137	7040	1337
AASTAFIN	37.44	-11.36	105222	8209	1182
Stellant Sec	543.75	4.99	50860	4198	1112
Bright Outdoor	424	-0.56	132000	11325	1066
Berger Paints	509.55	-0.85	137957	11913	1058
Tanvi Foods	90	5.88	53000	4600	1052

Price Shockers - NSE				
Company name	LCP	Prv Close	% Chg	Volume
Netlink Sol	195	145.8	33.74	22097
Amit Securities	40.19	30.2	33.08	1111
Ausom Enterp	146	109.75	33.03	99113
Krystal Integra	616.8	503.95	22.39	10821
PG Foils	262	216.75	20.88	111476
Tanvi Foods	90	77.45	16.2	53000
Trade Wings	624.4	539.45	15.75	4
Apis India	110.42	95.4	15.74	24658
Stellant Sec	543.75	469.8	15.74	50860
Kinetic Trust	64.22	55.49	15.73	13889
Soma Papers	255.35	220.65	15.73	16258
Spice Islands	228.65	197.6	15.71	52542
Adcounty Media	131.45	113.6	15.71	4000
United Leasing	46.49	40.18	15.7	200
Mangalam Drugs	40.7	35.18	15.69	185388
Jindal Leasefin	53.05	45.87	15.65	2569
CaprolactumChem	64.61	55.91	15.56	2241
Assam	886	767.1	15.5	180
Santosh Fine-Fa	30.43	26.46	15	7558
Hawa Engineers	107.89	93.89	14.91	12673
Le Lavoir	191.65	169.05	13.37	4526

Nifty 50 stocks - Summary Details											
Symbol	LTP	Chng	% Chng	Volume (lacs)	Turnover (crs.)	52w High	Diff with 52w H	52w Low	Diff with 52w L	30 days % chng	365 days % chng
NIFTY 50	25790.25	106.95	0.42%	2757.05	23870.40	26373.20	2.21%	21743.65	18.61%	-0.61%	8.42%
ADANIENT	2177.00	23.30	1.08%	12.57	270.33	2616.50	16.80%	1967.52	10.65%	-4.08%	-14.37%
ADANIPTS	1445.60	9.70	0.68%	15.39	219.33	1549.00	6.68%	1010.75	43.02%	-4.09%	24.61%
APOLLOHOSP	7267.00	10.50	0.14%	3.34	240.11	8099.50	10.28%	6001.00	21.10%	2.33%	1.59%
ASIANPAINT	2896.20	70.70	2.50%	17.44	499.39	2985.70	3.00%	2124.75	36.31%	1.06%	21.04%
AXISBANK	1275.00	3.00	0.24%	64.90	824.76	1304.60	2.27%	933.50	36.58%	-0.31%	18.33%
BAJAJ-AUTO	9478.50	-84.00	-0.88%	3.32	314.87	9888.00	4.14%	7089.35	33.70%	6.71%	10.65%
BAJAJFINSV	2001.40	9.00	0.45%	9.97	198.47	2195.00	8.82%	1617.00	23.77%	-3.73%	17.41%
BAJFINANCE	950.00	-9.60	-1.00%	56.39	535.01	1102.50	13.83%	710.52	33.70%	-5.62%	-86.95%
BEL	417.60	-1.05	-0.25%	145.91	605.80	436.00	4.22%	240.25	73.82%	7.50%	48.40%
BHARTIARTL	2042.70	15.60	0.77%	46.89	946.85	2174.50	6.06%	1559.50	30.98%	-3.00%	26.76%
CIPLA	1464.00	-1.70	-0.12%	23.80	346.70	1673.00	12.49%	1335.00	9.66%	-1.67%	-1.95%
COALINDIA	432.55	14.20	3.39%	144.03	618.29	436.70	0.95%	349.25	23.85%	10.28%	9.99%
DRREDDY	1216.50	6.40	0.53%	7.07	85.61	1386.00	12.23%	1020.00	19.26%	-2.90%	-11.72%
EICHERMOT	7443.00	-64.00	-0.85%	3.16	233.61	7613.50	2.24%	4646.00	60.20%	5.39%	45.39%
ETERNAL	285.30	0.95	0.33%	286.03	805.94	368.45	22.57%	194.80	46.46%	-2.52%	#VALUE!
GRASIM	2804.80	27.90	1.00%	4.76	132.28	2977.80	5.81%	2276.95	23.18%	1.13%	14.01%
HCLTECH	1667.00	5.60	0.34%	41.76	691.91	2012.20	17.16%	1302.75	27.96%	0.23%	-14.02%
HDFCBANK	936.40	-2.60	-0.28%	210.71	1974.02	1020.50	8.24%	812.15	15.30%	-5.83%	-44.58%
HDFCLIFE	754.65	4.75	0.63%	17.71	134.26	820.75	8.05%	584.30	29.15%	-1.70%	21.34%
HINDALCO	920.90	19.95	2.21%	68.85	626.82	970.80	5.14%	546.45	68.52%	10.83%	53.58%
HINDUNILVR	2408.90	36.30	1.53%	10.58	252.82	2750.00	12.40%	2136.00	12.78%	2.87%	-1.18%
ICICIBANK	1420.00	15.70	1.12%	109.24	1539.24	1500.00	5.33%	1186.00	19.73%	2.12%	11.12%
INDIGO	4848.50	4.50	0.09%	6.92	333.83	6232.50	22.21%	3945.00	22.90%	-2.49%	13.65%
INFY	1597.60	-16.50	-1.02%	69.85	1117.29	1982.80	19.43%	1307.00	22.23%	0.94%	-16.50%
ITC	338.00	0.85	0.25%	161.50	545.51	471.50	28.31%	335.80	0.66%	-15.93%	-25.00%
JIOFIN	288.45	1.20	0.42%	122.12	348.03	338.60	14.81%	198.65	45.21%	-2.03%	-3.80%
JSWSTEEL	1185.00	26.20	2.26%	13.92	162.61	1223.90	3.18%	880.00	34.66%	4.60%	28.43%
KOTAKBANK	2134.00	7.20	0.34%	25.44	540.83	2301.90	7.29%	1723.75	23.80%	-0.04%	20.25%
LT	4024.00	-1.20	-0.03%	13.86	553.07	4195.00	4.08%	2965.30	35.70%	0.69%	11.92%
M&M	3685.00	7.70	0.21%	16.65	608.88	3839.90	4.03%	2425.00	51.96%	1.14%	19.16%
MARUTI	16605.00	104.00	0.63%	2.89	475.27	17370.00	4.40%	11059.45	50.14%	3.00%	39.58%
MAXHEALTH	1015.90	-1.30	-0.13%	21.02	211.75	1314.30	22.70%	940.05	8.07%	-5.35%	-15.46%
NESTLEIND	1312.80	13.70	1.05%	10.32	134.83	1332.70	1.49%	1055.00	24.44%	6.85%	-41.48%
NTPC	337.90	1.90	0.57%	94.04	317.54	371.45	9.03%	292.80	15.40%	5.05%	3.26%
ONGC	235.55	1.46	0.62%	98.06	229.82	272.59	13.59%	205.00	14.90%	-2.40%	-13.72%
POWERGRID	258.95	0.95	0.37%	96.98	248.95	322.00	19.58%	247.30	4.71%	-2.48%	-15.86%
RELIANCE	1484.00	8.70	0.59%	88.77	1304.76	1611.80	7.93%	1114.85	33.11%	-3.54%	16.58%
SBILIFE	2091.00	21.00	1.01%	10.51	220.11	2109.60	0.88%	1372.55	52.34%	3.18%	41.48%
SBIN	1014.50	14.00	1.40%	76.17	766.43	1024.00	0.93%	680.00	49.19%	4.29%	29.74%
SHRIRAMFIN	969.05	-6.35	-0.65%	55.09	535.98	1025.60	5.51%	493.35	96.42%	15.20%	-66.35%
SUNPHARMA	1736.00	6.10	0.35%	23.27	401.97	1851.20	6.22%	1548.00	12.14%	-2.60%	-5.87%
TATACONSUM	1190.20	14.30	1.22%	6.64	78.81	1220.90	2.51%	926.05	28.52%	2.55%	22.29%
TMPV	350.60	-3.55	-1.00%	97.66	342.49	810.00	56.72%	337.70	3.82%	2.74%	#VALUE!
TATASTEEL	183.30	4.90	2.75%	257.79	466.60	187.85	2.42%	122.62	49.49%	11.04%	34.50%
TCS	3243.00	35.20	1.10%	22.26	715.10	4322.95	24.98%	2866.60	13.13%	-0.02%	-21.92%
TECHM	1585.00	2.80	0.18%	6.52	103.15	1736.40	8.72%	1209.40	31.06%	1.32%	-4.90%
TITAN	4228.60	26.80	0.64%	5.15	215.89	4312.10	1.94%	2925.00	44.57%	9.17%	20.60%
TRENT	4050.00	77.10	1.94%	9.08	365.84	6719.00	39.72%	3930.10	3.05%	-2.75%	-40.70%
ULTRACEMCO	12120.00	183.00	1.53%	2.75	328.78	13097.00	7.46%	10047.85	20.62%	4.58%	4.68%
WIPRO	263.30	1.35	0.52%	38.02	99.83	324.60	18.88%	228.00	15.48%	1.76%	-11.96%

Disclaimer / Disclosures

ANALYST CERTIFICATION

I, Mrs. Vaishali Parekh B.com, Research Analyst, author and the name subscribed to this report, hereby certify that all of the views expressed in this research report accurately reflect our views about the subject issuer(s) or securities. We also certify that no part of our compensation was, is, or will be directly or indirectly related to the specific recommendation(s) or view(s) in this report.

Terms & conditions and other disclosures:

Prabhudas Lilladher Pvt. Ltd, Mumbai, India (hereinafter referred to as "PL") is engaged in the business of Stock Broking, Portfolio Manager, Depository Participant and distribution for third party financial products. PL is a subsidiary of Prabhudas Lilladher Advisory Services Pvt Ltd. which has its various subsidiaries engaged in business of commodity broking, investment banking, financial services (margin funding) and distribution of third party financial/other products, details in respect of which are available at www.plindia.com

This document has been prepared by the Research Division of PL and is meant for use by the recipient only as information and is not for circulation. This document is not to be reported or copied or made available to others without prior permission of PL. It should not be considered or taken as an offer to sell or a solicitation to buy or sell any security.

The information contained in this report has been obtained from sources that are considered to be reliable. However, PL has not independently verified the accuracy or completeness of the same. Neither PL nor any of its affiliates, its directors or its employees accepts any responsibility of whatsoever nature for the information, statements and opinion given, made available or expressed herein or for any omission therein.

Recipients of this report should be aware that past performance is not necessarily a guide to future performance and value of investments can go down as well. The suitability or otherwise of any investments will depend upon the recipient's particular circumstances and, in case of doubt, advice should be sought from an independent expert/advisor.

Either PL or its affiliates or its directors or its employees or its representatives or its clients or their relatives may have position(s), make market, act as principal or engage in transactions of securities of companies referred to in this report and they may have used the research material prior to publication.

PL may from time to time solicit or perform investment banking or other services for any company mentioned in this document.

PL is registered as Research Analyst under Securities and Exchange Board of India (Research Analysts) Regulations, 2014 PL submits that no material disciplinary action has been taken on us by any Regulatory Authority impacting Equity Research Analysis activities.

PL or its research analysts or its associates or his relatives do not have any financial interest in the subject company.

PL or its research analysts or its associates or his relatives do not have actual/beneficial ownership of one per cent or more securities of the subject company at the end of the month immediately preceding the date of publication of the research report.

PL or its research analysts or its associates or his relatives do not have any material conflict of interest at the time of publication of the research report.

PL or its associates might have received compensation from the subject company in the past twelve months.

PL or its associates might have managed or co-managed public offering of securities for the subject company in the past twelve months or mandated by the subject company for any other assignment in the past twelve months.

PL or its associates might have received any compensation for investment banking or merchant banking or brokerage services from the subject company in the past twelve months.

PL or its associates might have received any compensation for products or services other than investment banking or merchant banking or brokerage services from the subject company in the past twelve months PL or its associates might have received any compensation or other benefits from the subject company or third party in connection with the research report.

PL encourages independence in research report preparation and strives to minimize conflict in preparation of research report. PL or its analysts did not receive any compensation or other benefits from the subject Company or third party in connection with the preparation of the research report. PL or its Research Analysts do not have any material conflict of interest at the time of publication of this report.

It is confirmed that Mrs. Vaishali Parekh B.com, Research Analyst of this report has not received any compensation from the companies mentioned in the report in the preceding twelve months compensation of our Research Analysts is not based on any specific merchant banking, investment banking or brokerage service transactions.

The Research analysts for this report certifies that all of the views expressed in this report accurately reflect his or her personal views about the subject company or companies and its or their securities, and no part of his or her compensation was, is or will be, directly or indirectly related to specific recommendations or views expressed in this report.

The research analysts for this report has not served as an officer, director or employee of the subject company PL or its research analysts have not engaged in market making activity for the subject company

Our sales people, traders, and other professionals or affiliates may provide oral or written market commentary or trading strategies to our clients that reflect opinions that are contrary to the opinions expressed herein, and our proprietary trading and investing businesses may make investment decisions that are inconsistent with the recommendations expressed herein. In reviewing these materials, you should be aware that any or all of the foregoing, among other things, may give rise to real or potential conflicts of interest.

PL and its associates, their directors and employees may (a) from time to time, have a long or short position in, and buy or sell the securities of the subject company or (b) be engaged in any other transaction involving such securities and earn brokerage or other compensation or act as a market maker in the financial instruments of the subject company or act as an advisor or lender/borrower to the subject company or may have any other potential conflict of interests with respect to any recommendation and other related information and opinions.

Regd. Office: 3rd Floor, Sadhana House, 570, P. B. Marg, Behind Mahindra Tower, Worli, Mumbai - 400 018, India.