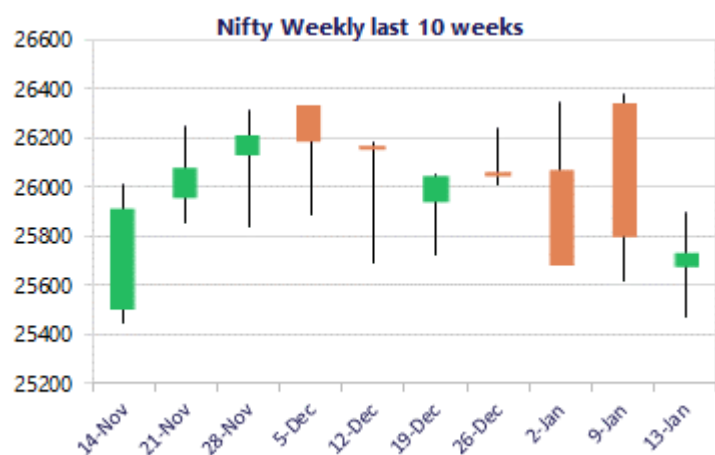
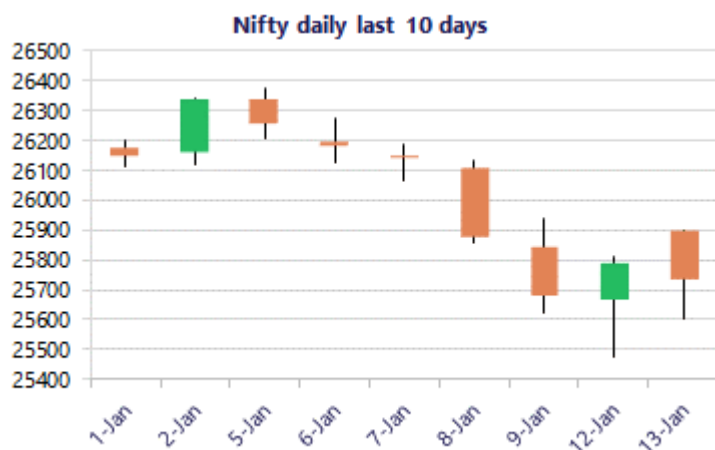


Date: 14th January 2026

* Sensex 83627.69 -250.48

* Nifty 25732.30 -57.95

* Bank Nifty 59578.80 +128.30



*Blue candle → Close rate > Open rate * Red candle → Close rate < Open rate

Market Preview

Nifty ends near 25700 zone

Nifty erased the gains witnessed in the previous session and ended in the red near 25700 zone with bias precariously placed awaiting further developments. BankNifty closed in the green with some volatility witnessed and hovering near the 59600 zone with overall bias maintained intact. The market breadth was overall flat with the advance decline indicating a neutral ratio at close.

Market Forecast

Nifty daily range 25600-25900

Nifty, fizzled out after the gap up opening near the 25900 zone and with profit booking witnessed slipped to hit the intraday low near 25600 level to recover to some extent in the final hours to minimise the losses. The index is precariously placed having the major and crucial support positioned near the important 200 period MA at 25000 zone, as mentioned earlier, and on the upside would need to breach above the important 50EMA level at 25900 zone to establish conviction and clarity for further development of the market movement.

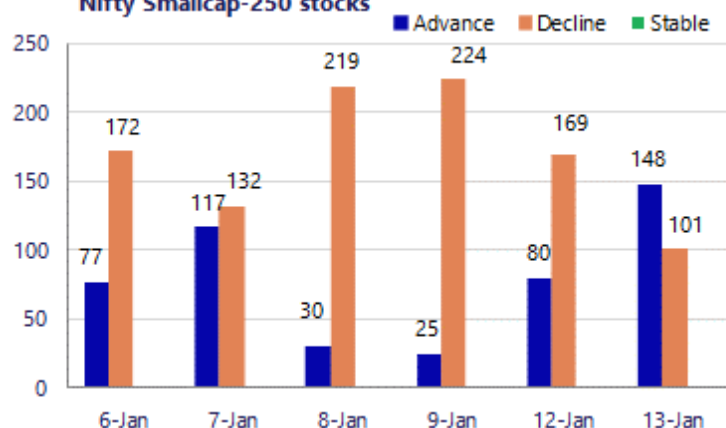
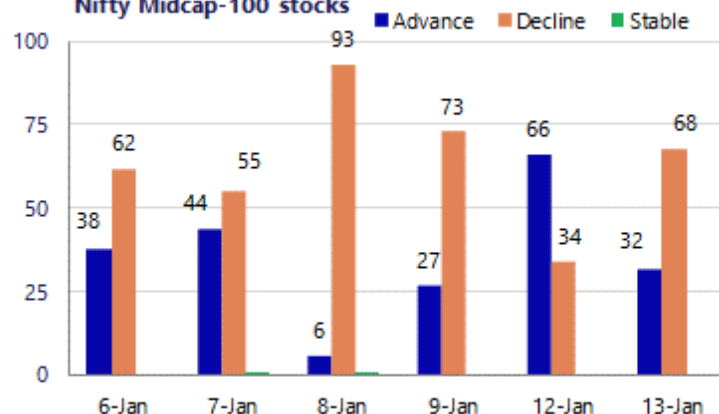
BankNifty witnessed an overall rangebound session with some volatility during the intraday session to end in the green near 59600 zone with bias maintained intact as compared to Nifty index. The index has been sustaining above the important near-term support and 50EMA level at 58900 zone to maintain the overall bias positive and on the upside, as said earlier, would need a decisive close above the 60000 zone to trigger for fresh upward move in the coming days.

The support for the day is seen at 25600 levels, while the resistance is seen at 25900 levels. BankNifty would have the daily range of 59200-60000 levels.

Sensex	Period	Closing	% Chng	Trend	Reversal	2 Sup	1 Sup	Pivot	1 Res	2 Res
Nifty	Daily	25732.30	-0.22%	-5	25910.30	25449	25590	25745	25887	26042
	Weekly	25683.30	-2.45%	-1	26393.20	25145	25414	25894	26163	26642
	Monthly	26129.60	-0.28%	3	25829.00	25419	25774	26050	26405	26681
Bank Nifty	Daily	59578.80	0.22%	-4	59838.40	59097	59338	59553	59794	60008
	Weekly	59251.55	-1.50%	-1	60482.70	58367	58809	59601	60043	60835
	Monthly	59581.85	-0.29%	3	58708.70	58069	58825	59469	60226	60870
Sensex	Daily	83627.69	-0.30%	-6	84141.10	82721	83174	83716	84170	84711
	Weekly	83576.24	-2.55%	-1	86158.60	81807	82692	84287	85172	86767
	Monthly	85220.60	-0.57%	3	84363.05	83208	84214	85159	86166	87111

Gainers - Losers (Nifty 500 Stocks)

Gainers				Losers			
Company Name	Last Price	% Gain	Volume	Company Name	Last Price	% Loss	Volume
Authum Invest	667.9	7.77%	3866997	Dixon Technolog	11,238.00	-5.10%	1231104
City Union Bank	277.20	5.38%	3500709	AU Small Financ	971.95	-3.56%	4628239
Alkyl Amines	1610.9	4.20%	501779	Apar Ind	7,651.50	-2.89%	94210
Apollo Tyres	520.50	3.34%	1378638	Aegis Logistics	724.25	-2.40%	263268
Angel One	2,439.30	2.99%	1328842	Cohance Life	447.95	-2.07%	1139574
Birlasoft	425.10	2.84%	790418	AIA Engineering	3905.1	-2.05%	69290
CCL Products	967.15	2.59%	194438	Adani Energy	932.5	-1.94%	1847077

Nifty Smallcap-250 stocks

Nifty Midcap-100 stocks


Nifty Daily chart with RSI indicator



BankNifty Daily chart with RSI indicator



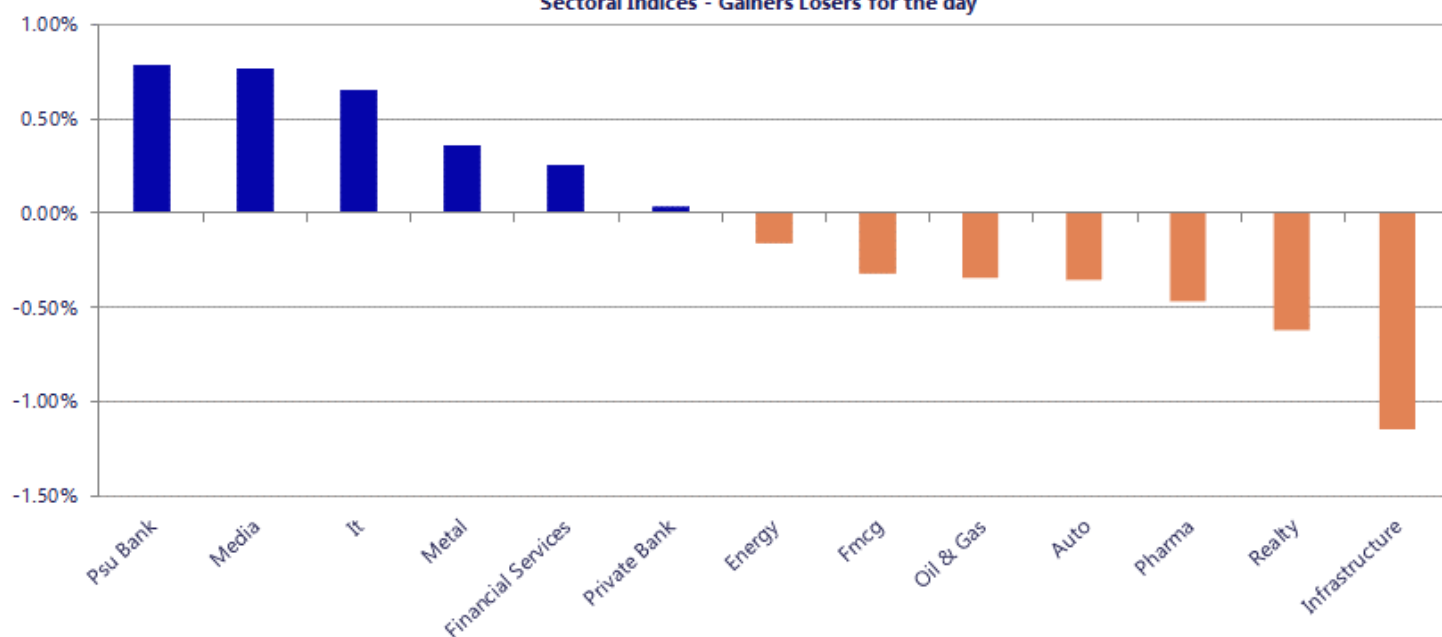
Breakouts - Cross above 200 DMA			
Company Name	LCP	Change %	200 DMA
Garuda Const	192.84	16.46	165.58
Gandhar Oil	162	7.06	151.31
MYMUDRA	85	5.93	80.24
Ratnaveer Preci	156.91	4.91	149.56
Ind-Swift Labs	100.66	4.51	96.32
Radico Khaitan	2934.6	3.37	2838.81
Indo Thai Secu	259.2	2.56	252.72
Saakshi Medtech	174	2.56	169.66
MRPL	145.11	2.08	142.15
ITI	309.5	2.01	303.41
Tarmat	54.3	1.90	53.29
Sadhav Shipping	107	1.85	105.06
Onward Tech	304.5	1.57	299.8
Rachana Infra	36.95	1.18	36.52
Purple United	373	1.00	369.32
Redington	272.6	0.99	269.94
Mindteck	222.95	0.82	221.14
ONGC	243.8	0.79	241.88

* Stocks crossing above its Simple Moving Average (200DMA)

Breakdown - Cross below 200 DMA			
Company Name	LCP	Change %	200 DMA
WOL 3D India	137.2	-3.54	142.23
5paisa Capita	355.8	-2.18	363.72
Synergy Green I	509.15	-2.09	520.04
Nagreeka Cap	27.26	-1.66	27.72
Senco Gold	336.3	-1.55	341.58
Shanthala	31.2	-1.30	31.61
Gabriel India	936.9	-1.22	948.47
Agro Phos India	37.57	-1.21	38.03
Panache Digilif	289.05	-1.21	292.58
Diamond Power	131.66	-1.12	133.15
Groww Defence	78	-1.09	78.86
Shipping Corp	212.42	-1.07	214.71
Aeroflex Ind.	180	-1.05	181.91
Lancor Holdings	23.35	-1.02	23.59
MO Defence	85.75	-0.98	86.6
Interarch Build	2083.5	-0.75	2099.25
Veranda Learnin	215.24	-0.70	216.76
GE Power India	305.7	-0.59	307.5

* Stocks crossing below its Simple Moving Average (200DMA)

Sectoral Indices - Gainers Losers for the day



Stocks witnessing a volume surge as compared to their 5 day average

Watch out for the stocks that have seen a huge spurt in its share price over the last three days

Volume Shockers - NSE					
Company name	LCP	% Chg	Volume	Avg Vol *	% Chg
Omaxe	83.83	15.5	1467383	12492	11646
CHEMPLAST SANM	278.75	15.78	408005	4753	8484
Authum Invest	668.9	7.92	246538	4559	5307
Pearl Global In	1511.95	1.26	281249	5776	4769
Oil Country	61.5	17.93	89038	1929	4515
Navkar Corp	109.13	10.25	426677	12808	3231
Sigma Solve	60.65	5.26	42971	1373	3030
Go Fashion	405.3	-2.79	237757	7829	2937
Jindal PolyFilm	425.8	-2.29	47190	1675	2717
Oriental Hotels	114.9	2.04	346599	13546	2459
AU Small Financ	973.35	-3.33	570047	22471	2437
Modern Eng	30.8	5.81	42839	1793	2289
LE Travenues Te	225.9	5.96	942834	45184	1987
Genesys Int	380.8	-3.86	239028	11601	1960
Nuvoco Vistas	353.3	1.57	455066	23832	1809
Bhakti Gems	47.5	3.35	418668	22660	1748
FSN E-Commerce	254.35	0.61	1443226	82334	1653
Vidhi Dyestuffs	334.5	5.35	31647	1822	1637
ITI	306.85	3.75	711552	45009	1481
Riddhi Steel &	312.5	1.13	42000	2700	1456
Federal Bank	249.2	-1.48	2142303	165384	1195

Price Shockers - NSE				
Company name	LCP	Prv Close	% Chg	Volume
JTL Ind.	66.82	51.54	29.65	5001020
Cosmo Ferrites	165.25	132.15	25.05	6158
Manaksia Alumin	45.38	38.42	18.12	747611
Premier Polyfil	48.94	41.52	17.87	78639
IFCI	57.55	49	17.45	23542187
Avro India	134.25	114.5	17.25	14216
Neogen	1309.7	1135.65	15.33	20618
Raghuvir Synth	116.45	101.1	15.18	39306
Dredging Corp	1103	958.2	15.11	110572
CHEMPLAST SANM	278.75	243.05	14.69	408005
PG Foils	266.4	233	14.33	59076
Navkar Corp	109.13	95.47	14.31	426677
Rajratan Global	525.15	461.65	13.76	36116
Ravindra Energy	158.85	141.2	12.5	39023
Waaree Renewabl	1006	894.85	12.42	234284
Gujarat Natural	107.8	96.3	11.94	108744
Oil Country	60.55	54.12	11.88	95141
Ind-Swift Labs	101.35	90.7	11.74	48258
NTC Industries	186.45	168.15	10.88	24340
Omaxe	83.83	75.7	10.74	1467383
Tarmat	54.48	49.2	10.73	22903

Nifty 50 stocks - Summary Details											
Symbol	LTP	Chng	% Chng	Volume (lacs)	Turnover (crs.)	52w High	Diff with 52w H	52w Low	Diff with 52w L	30 days % chng	365 days % chng
NIFTY 50	25732.30	-57.95	-0.22%	3395.13	31432.35	26373.20	2.43%	21743.65	18.34%	-0.99%	10.07%
ADANIENT	2156.50	-15.10	-0.70%	7.92	171.17	2616.50	17.58%	1967.52	9.60%	-4.85%	-8.54%
ADANIPTS	1429.90	-13.60	-0.94%	9.20	131.80	1549.00	7.69%	1010.75	41.47%	-5.21%	29.79%
APOLLOHOSP	7308.00	39.50	0.54%	2.75	200.44	8099.50	9.77%	6001.00	21.78%	2.36%	3.29%
ASIANPAINT	2880.20	-16.20	-0.56%	10.52	303.64	2985.70	3.53%	2124.75	35.55%	4.76%	24.80%
AXISBANK	1262.40	-11.80	-0.93%	51.63	653.18	1304.60	3.23%	933.50	35.23%	-0.93%	22.44%
BAJAJ-AUTO	9550.00	59.00	0.62%	2.29	218.08	9888.00	3.42%	7089.35	34.71%	5.28%	8.30%
BAJAJFINSV	2007.00	8.10	0.41%	12.17	243.92	2195.00	8.56%	1617.00	24.12%	-4.04%	17.50%
BAJFINANCE	949.40	-2.50	-0.26%	67.65	640.35	1102.50	13.89%	710.52	33.62%	-6.43%	-86.94%
BEL	413.35	-4.35	-1.04%	133.91	555.76	436.00	5.19%	240.25	72.05%	7.25%	54.13%
BHARTIARTL	2025.30	-18.70	-0.91%	73.88	1498.10	2174.50	6.86%	1559.50	29.87%	-1.89%	26.49%
CIPLA	1448.00	-17.20	-1.17%	19.10	276.08	1673.00	13.45%	1335.00	8.46%	-3.44%	-0.25%
COALINDIA	429.00	-3.30	-0.76%	71.03	305.69	436.70	1.76%	349.25	22.83%	12.77%	17.31%
DRREDDY	1187.90	-27.60	-2.27%	20.71	247.69	1379.70	13.90%	1020.00	16.46%	-4.99%	-10.26%
EICHERMOT	7383.00	-53.00	-0.71%	2.63	194.84	7613.50	3.03%	4646.00	58.91%	2.86%	47.00%
ETERNAL	294.25	9.00	3.16%	503.50	1476.11	368.45	20.14%	194.80	51.05%	-4.29%	#VALUE!
GRASIM	2771.70	-35.00	-1.25%	8.76	243.59	2977.80	6.92%	2276.95	21.73%	-1.06%	18.72%
HCLTECH	1664.00	-3.60	-0.22%	71.49	1184.90	2012.20	17.30%	1302.75	27.73%	-0.33%	-16.42%
HDFCBANK	934.75	-2.20	-0.23%	320.42	3012.82	1020.50	8.40%	812.15	15.10%	-6.45%	-43.45%
HDFCLIFE	750.00	-4.65	-0.62%	18.21	136.36	820.75	8.62%	584.30	28.36%	-2.94%	23.99%
HINDALCO	935.00	14.85	1.61%	68.69	640.20	970.80	3.69%	546.45	71.10%	7.99%	60.18%
HINDUNILVR	2389.50	-16.70	-0.69%	15.20	362.58	2750.00	13.11%	2136.00	11.87%	6.44%	-1.47%
ICICIBANK	1436.50	23.40	1.66%	142.95	2048.20	1500.00	4.23%	1186.00	21.12%	3.45%	13.06%
INDIGO	4753.50	-96.50	-1.99%	13.40	640.06	6232.50	23.73%	3945.00	20.49%	-0.22%	14.69%
INFY	1600.00	4.10	0.26%	80.81	1289.03	1982.80	19.31%	1307.00	22.42%	-0.14%	-18.86%
ITC	334.30	-4.10	-1.21%	249.19	835.65	471.50	29.10%	333.70	0.18%	-15.42%	-23.94%
JIOFIN	284.15	-4.10	-1.42%	129.56	368.89	338.60	16.08%	198.65	43.04%	-4.16%	2.74%
JSWSTEEL	1178.10	-4.60	-0.39%	15.71	185.65	1223.90	3.74%	880.00	33.88%	5.08%	31.40%
KOTAKBANK	2132.00	-1.30	-0.06%	25.42	541.78	2301.90	7.38%	1723.75	23.68%	-1.99%	21.47%
LT	3890.00	-129.00	-3.21%	49.78	1939.65	4195.00	7.27%	2965.30	31.18%	-1.35%	13.65%
M&M	3658.00	-24.00	-0.65%	17.01	621.64	3839.90	4.74%	2425.00	50.85%	0.07%	19.05%
MARUTI	16387.00	-195.00	-1.18%	3.12	513.39	17370.00	5.66%	11059.45	48.17%	0.36%	42.57%
MAXHEALTH	1029.90	16.20	1.60%	27.87	283.08	1314.30	21.64%	940.05	9.56%	-6.25%	-11.84%
NESTLEIND	1315.60	3.20	0.24%	13.16	173.23	1332.70	1.28%	1055.00	24.70%	5.98%	-41.62%
NTPC	337.95	0.50	0.15%	55.83	188.31	371.45	9.02%	292.80	15.42%	3.81%	9.47%
ONGC	243.50	7.79	3.30%	225.25	545.10	270.47	9.97%	205.00	18.78%	-0.97%	-10.38%
POWERGRID	259.20	0.65	0.25%	97.34	251.36	322.00	19.50%	247.30	4.81%	-1.92%	-13.73%
RELIANCE	1456.90	-26.30	-1.77%	134.99	1967.70	1611.80	9.61%	1114.85	30.68%	-4.71%	19.43%
SBILIFE	2076.90	-21.10	-1.01%	4.26	88.77	2109.60	1.55%	1372.55	51.32%	3.56%	41.92%
SBIN	1028.50	13.35	1.32%	110.17	1129.41	1029.50	0.10%	680.00	51.25%	5.40%	36.58%
SHRIRAMFIN	980.00	7.20	0.74%	38.60	377.65	1025.60	4.45%	493.35	98.64%	14.72%	82.86%
SUNPHARMA	1727.90	-8.10	-0.47%	17.70	304.89	1851.20	6.66%	1548.00	11.62%	-3.21%	-2.73%
TATACONSUM	1188.80	-3.50	-0.29%	5.98	71.26	1220.90	2.63%	926.05	28.37%	3.74%	22.56%
TMPV	348.45	-2.10	-0.60%	75.22	262.08	786.65	55.70%	337.70	3.18%	0.89%	#VALUE!
TATASTEEL	182.45	-0.79	-0.43%	191.52	349.98	187.85	2.87%	122.62	48.79%	6.60%	43.80%
TCS	3263.00	23.40	0.72%	56.45	1835.44	4322.95	24.52%	2866.60	13.83%	0.59%	-24.05%
TECHM	1610.00	23.90	1.51%	25.73	413.95	1736.40	7.28%	1209.40	33.12%	0.49%	-7.01%
TITAN	4233.50	1.90	0.04%	7.71	327.11	4312.10	1.82%	2925.00	44.74%	9.06%	23.00%
TRENT	3906.00	-150.40	-3.71%	16.52	648.44	6523.85	40.13%	3827.80	2.04%	-0.47%	-38.39%
ULTRACEMCO	12015.00	-83.00	-0.69%	2.91	350.93	13097.00	8.26%	10047.85	19.58%	3.20%	11.35%
WIPRO	264.40	1.30	0.49%	69.31	182.44	324.60	18.55%	228.00	15.96%	0.96%	-12.46%

Disclaimer / Disclosures

ANALYST CERTIFICATION

I, Mrs. Vaishali Parekh B.com, Research Analyst, author and the name subscribed to this report, hereby certify that all of the views expressed in this research report accurately reflect our views about the subject issuer(s) or securities. We also certify that no part of our compensation was, is, or will be directly or indirectly related to the specific recommendation(s) or view(s) in this report.

Terms & conditions and other disclosures:

Prabhudas Lilladher Pvt. Ltd, Mumbai, India (hereinafter referred to as "PL") is engaged in the business of Stock Broking, Portfolio Manager, Depository Participant and distribution for third party financial products. PL is a subsidiary of Prabhudas Lilladher Advisory Services Pvt Ltd. which has its various subsidiaries engaged in business of commodity broking, investment banking, financial services (margin funding) and distribution of third party financial/other products, details in respect of which are available at www.plindia.com

This document has been prepared by the Research Division of PL and is meant for use by the recipient only as information and is not for circulation. This document is not to be reported or copied or made available to others without prior permission of PL. It should not be considered or taken as an offer to sell or a solicitation to buy or sell any security.

The information contained in this report has been obtained from sources that are considered to be reliable. However, PL has not independently verified the accuracy or completeness of the same. Neither PL nor any of its affiliates, its directors or its employees accepts any responsibility of whatsoever nature for the information, statements and opinion given, made available or expressed herein or for any omission therein.

Recipients of this report should be aware that past performance is not necessarily a guide to future performance and value of investments can go down as well. The suitability or otherwise of any investments will depend upon the recipient's particular circumstances and, in case of doubt, advice should be sought from an independent expert/advisor.

Either PL or its affiliates or its directors or its employees or its representatives or its clients or their relatives may have position(s), make market, act as principal or engage in transactions of securities of companies referred to in this report and they may have used the research material prior to publication.

PL may from time to time solicit or perform investment banking or other services for any company mentioned in this document.

PL is registered as Research Analyst under Securities and Exchange Board of India (Research Analysts) Regulations, 2014 PL submits that no material disciplinary action has been taken on us by any Regulatory Authority impacting Equity Research Analysis activities.

PL or its research analysts or its associates or his relatives do not have any financial interest in the subject company.

PL or its research analysts or its associates or his relatives do not have actual/beneficial ownership of one per cent or more securities of the subject company at the end of the month immediately preceding the date of publication of the research report.

PL or its research analysts or its associates or his relatives do not have any material conflict of interest at the time of publication of the research report.

PL or its associates might have received compensation from the subject company in the past twelve months.

PL or its associates might have managed or co-managed public offering of securities for the subject company in the past twelve months or mandated by the subject company for any other assignment in the past twelve months.

PL or its associates might have received any compensation for investment banking or merchant banking or brokerage services from the subject company in the past twelve months.

PL or its associates might have received any compensation for products or services other than investment banking or merchant banking or brokerage services from the subject company in the past twelve months PL or its associates might have received any compensation or other benefits from the subject company or third party in connection with the research report.

PL encourages independence in research report preparation and strives to minimize conflict in preparation of research report. PL or its analysts did not receive any compensation or other benefits from the subject Company or third party in connection with the preparation of the research report. PL or its Research Analysts do not have any material conflict of interest at the time of publication of this report.

It is confirmed that Mrs. Vaishali Parekh B.com, Research Analyst of this report has not received any compensation from the companies mentioned in the report in the preceding twelve months compensation of our Research Analysts is not based on any specific merchant banking, investment banking or brokerage service transactions.

The Research analysts for this report certifies that all of the views expressed in this report accurately reflect his or her personal views about the subject company or companies and its or their securities, and no part of his or her compensation was, is or will be, directly or indirectly related to specific recommendations or views expressed in this report.

The research analysts for this report has not served as an officer, director or employee of the subject company PL or its research analysts have not engaged in market making activity for the subject company

Our sales people, traders, and other professionals or affiliates may provide oral or written market commentary or trading strategies to our clients that reflect opinions that are contrary to the opinions expressed herein, and our proprietary trading and investing businesses may make investment decisions that are inconsistent with the recommendations expressed herein. In reviewing these materials, you should be aware that any or all of the foregoing, among other things, may give rise to real or potential conflicts of interest.

PL and its associates, their directors and employees may (a) from time to time, have a long or short position in, and buy or sell the securities of the subject company or (b) be engaged in any other transaction involving such securities and earn brokerage or other compensation or act as a market maker in the financial instruments of the subject company or act as an advisor or lender/borrower to the subject company or may have any other potential conflict of interests with respect to any recommendation and other related information and opinions.

Regd. Office: 3rd Floor, Sadhana House, 570, P. B. Marg, Behind Mahindra Tower, Worli, Mumbai - 400 018, India.