

Date: 16<sup>th</sup> January 2026

\* Sensex 83382.71 -244.98

\* Nifty 25665.60 -66.70

\* Bank Nifty 59580.15 +1.35

## Market Preview

### Nifty consolidates amid intraday fluctuations

Nifty witnessed fluctuations during the intraday session once again holding on to the important support at 25600 zone with 25900 zone capped as the near-term resistance level as of now. BankNifty is gripped between a narrow range with PSU Banks showing signs of positive trigger for further upward move in the coming days. The market breadth was once again flat with the advance decline indicating a neutral ratio at close.

## Market Forecast

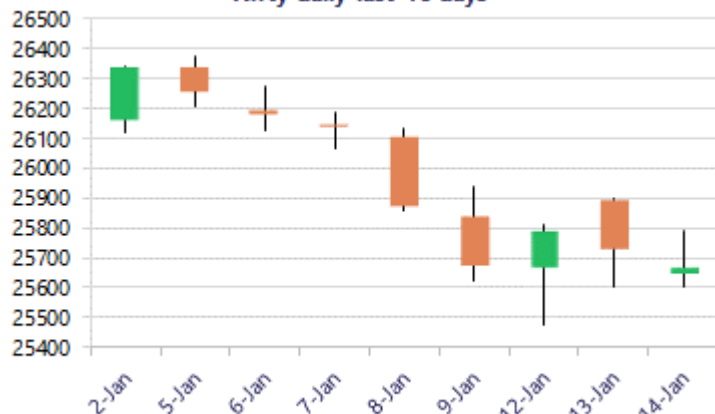
### Nifty daily range 25500-25900

Nifty, once again witnessed a highly volatile session ranging between the 25600 and 25780 zone during the session with the index precariously placed sustaining above the important 100 period MA at 25650 level which needs to be sustained to maintain the overall bias intact. The index would have the major and crucial support positioned near the important 200 period MA at 25000 zone, as mentioned earlier, and on the upside would need to breach above the important 50EMA level at 25900 zone to establish conviction and clarity for further development of the market movement.

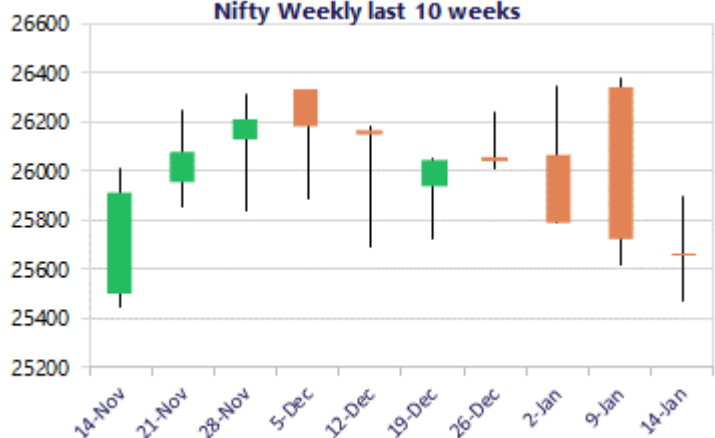
BankNifty ended on a flat note amid fluctuations gripped within a range during the session with most of the PSU Banks indicating acting participation gaining strength and can anticipate for further rise in the coming days. The index has so far sustained above the important near-term support and 50EMA level at 58900 zone to maintain the overall bias intact and on the upside, as said earlier, would need a decisive close above the 60000 zone to trigger for fresh upward move in the coming days.

The support for the day is seen at 25500 levels, while the resistance is seen at 25900 levels. BankNifty would have the daily range of 59200-60200 levels.

Nifty daily last 10 days



Nifty Weekly last 10 weeks

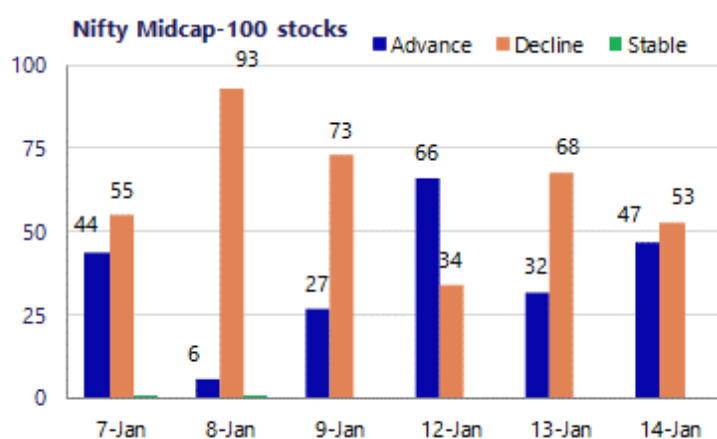
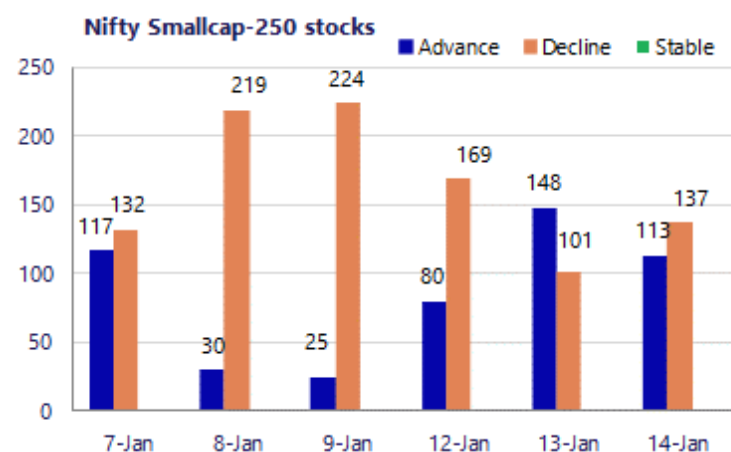


\*Blue candle → Close rate > Open rate \* Red candle → Close rate < Open rate

Sensex	Period	Closing	% Chng	Trend	Reversal	2 Sup	1 Sup	Pivot	1 Res	2 Res
Nifty	Daily	25665.60	-0.26%	-6	25808.55	25499	25582	25687	25770	25875
	Weekly	25683.30	-2.45%	-1	26393.20	25145	25414	25894	26163	26642
	Monthly	26129.60	-0.28%	3	25829.00	25419	25774	26050	26405	26681
Bank Nifty	Daily	59580.15	0.00%	-5	59716.80	59095	59337	59567	59810	60039
	Weekly	59251.55	-1.50%	-1	60482.70	58367	58809	59601	60043	60835
	Monthly	59581.85	-0.29%	3	58708.70	58069	58825	59469	60226	60870
Sensex	Daily	83382.71	-0.29%	-7	83805.00	82835	83109	83459	83733	84084
	Weekly	83576.24	-2.55%	-1	86158.60	81807	82692	84287	85172	86767
	Monthly	85220.60	-0.57%	3	84363.05	83208	84214	85159	86166	87111

**Gainers - Losers ( Nifty 500 Stocks )**

Gainers				Losers			
Company Name	Last Price	% Gain	Volume	Company Name	Last Price	% Loss	Volume
Chennai Petro	875.3	6.49%	2966687	Endurance Techn	2,520.40	-2.60%	69873
Bank of India	152.87	3.60%	16835362	Anant Raj	552	-2.57%	1058627
Angel One	2525.4	3.53%	1313528	Asian Paints	2,813.90	-2.51%	958085
Dalmia Bharat	2,177.30	3.41%	485027	Bharti Hexacom	1,639.80	-2.40%	310604
BLS Internation	306.55	3.09%	6430389	C. E. Info Syst	1,526.40	-2.33%	49409
Axis Bank	1,298.80	2.92%	7776698	Apar Ind	7478	-2.27%	65089
DOMS Industries	2,517.20	2.63%	48262	Anand Rathi	3084.2	-2.16%	236127



## Nifty Daily chart with RSI indicator



## BankNifty Daily chart with RSI indicator



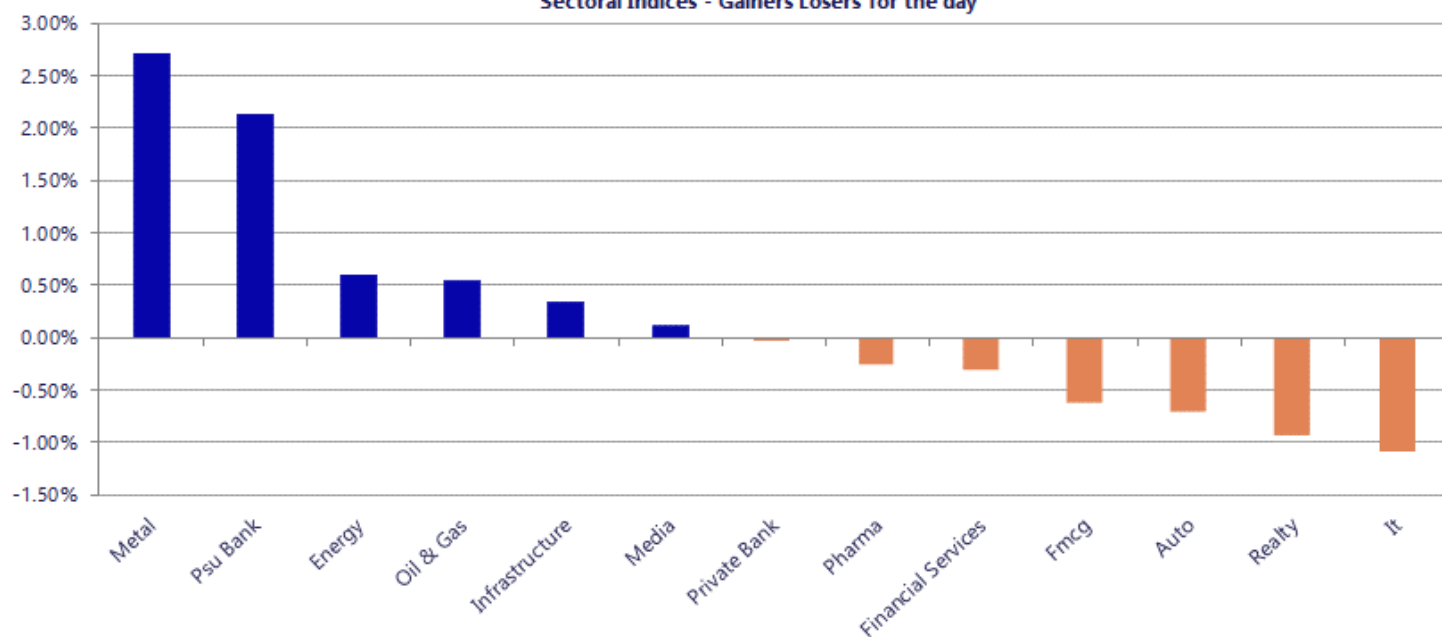
Breakouts - Cross above 200 DMA			
Company Name	LCP	Change %	200 DMA
MMTC	71.45	11.52	64.07
Aurum PropTech	190.17	5.47	180.3
Hariom Pipe	434.8	3.25	421.1
Agro Phos India	39.29	3.23	38.06
Prajay Engineer	24.89	3.11	24.14
Avro India	151.05	2.55	147.29
Mukand	130.18	2.51	126.99
Manaksia Coated	133	2.44	129.83
Dalmia Bharat	2174.4	2.41	2123.3
Natco Pharma	893.5	2.04	875.64
Veranda Learnin	220.82	1.85	216.81
Sadhav Shipping	107	1.78	105.13
Sukhjot Starch	181.15	1.68	178.15
LE Travenues Te	231.9	1.47	228.55
Sanghi Ind	64.51	1.35	63.65
Barak Vally Cem	43.46	1.14	42.97
Divgi Torqtrans	599.7	0.83	594.79
Edelweiss	105.7	0.78	104.88

\* Stocks crossing above its Simple Moving Average (200DMA)

Breakdown - Cross below 200 DMA			
Company Name	LCP	Change %	200 DMA
Kotak Mahindra	421.3	-80.00	2106.12
Purple United	353.15	-4.69	370.54
Tata Elxsi	5525	-2.60	5672.68
Medicamen Bio	384.25	-2.13	392.6
Endurance Techn	2513.6	-1.95	2563.47
Tarmat	52.25	-1.93	53.28
PVR INOX	1021.5	-1.86	1040.84
L&T Technology	4245.7	-1.66	4317.26
Gabriel India	936	-1.50	950.24
TCS	3191.1	-1.31	3233.44
Nila Spaces	14.3	-1.24	14.48
Aadhar Housing	477.25	-1.19	482.98
Anant Raj	554.1	-0.95	559.44
Kataria Industr	103.55	-0.92	104.51
Greenlam Ind	241.16	-0.87	243.28
Indian Hume	394.7	-0.79	397.86
ITI	301.35	-0.74	303.6
Mirza Intl	34.3	-0.52	34.48

\* Stocks crossing below its Simple Moving Average (200DMA)

Sectoral Indices - Gainers Losers for the day



Stocks witnessing a volume surge as compared to their 5 day average

Watch out for the stocks that have seen a huge spurt in its share price over the last three days

Volume Shockers - NSE					
Company name	LCP	% Chg	Volume	Avg Vol *	% Chg
Shoppers Stop	389.85	5.01	601342	1527	39286
Puravankara	252.5	9.71	1469020	8545	17091
Nitco	89.54	6.85	1170065	9734	11920
Indiamart Inter	2113.7	-1.84	1128418	9675	11564
Capital India	35.59	7.91	3047751	38675	7780
AAVAS Financier	1443.8	-0.22	413424	5266	7751
Polycab	7324.55	-3.24	847742	13602	6132
Adcounty Media	141.95	2.86	320800	7200	4356
Craftsman	7851.5	2.08	47513	1098	4226
AAYUSH WELLNESS	44.31	5	770177	25955	2867
CenturyPlyboard	762.65	-0.22	51474	1886	2629
ANTELOPUS	440.7	20	364775	13473	2607
MMTC	71.49	12.37	7083273	311723	2172
Sigma Solve	59	-3.09	27560	1373	1907
Ajmera Realty	186	-79.59	61776	3211	1824
Modern Eng	30.9	-0.42	34202	1793	1808
Bajaj Holdings	10752.2	0.46	286038	15917	1697
Bhakti Gems	45.1	-4.99	392844	22660	1634
Supreme Holding	68.5	8.71	71458	4532	1477
Bharti Hexacom	1641.45	-2.25	257461	16564	1454
GAIL	165.4	0.06	7383152	477521	1446

Price Shockers - NSE				
Company name	LCP	Prv Close	% Chg	Volume
Caspian	66.59	8.22	710.1	18072
S.M. Gold	19.61	13.02	50.61	1073516
Manaksia Alumin	54.09	38.42	40.79	823250
SSIL	23.88	17.1	39.65	364121
JTL Ind.	70.37	51.54	36.53	2367836
Avro India	151	114.5	31.88	26816
Rathi Bars	28	23.03	21.58	365559
Jay Ambe Superm	153.75	127.1	20.97	3200
ANTELOPUS	440.7	364.7	20.84	364775
Premier Polyfil	50.07	41.52	20.59	150905
Cosmo Ferrites	159	132.15	20.32	1723
UCAL	129.2	107.5	20.19	55720
RDB Infra	85.15	70.89	20.12	10183387
United Van Hors	256.2	215.15	19.08	43289
Dredging Corp	1135	958.2	18.45	52673
Maithan Alloys	1126.4	966.9	16.5	55154
Neogen	1315.7	1135.65	15.85	10458
Sinnar Bidi	764	660	15.76	10
Anand Rayons	388.05	335.25	15.75	5436
Soma Papers	281.5	243.2	15.75	53976
Trade Wings	688.35	594.7	15.75	1



Nifty 50 stocks - Summary Details											
Symbol	LTP	Chng	% Chng	Volume (lacs)	Turnover (crs.)	52w High	Diff with 52w H	52w Low	Diff with 52w L	30 days % chng	365 days % chng
NIFTY 50	25665.60	-66.70	-0.26%	3931.21	28944.18	26373.20	2.68%	21743.65	18.04%	-1.21%	9.82%
ADANIENT	2152.00	-6.50	-0.30%	6.18	133.28	2616.50	17.75%	1967.52	9.38%	-5.43%	-9.09%
ADANIPTS	1429.00	0.40	0.03%	12.79	183.01	1549.00	7.75%	1010.75	41.38%	-6.19%	28.45%
APOLLOHOSP	7265.00	-46.50	-0.64%	3.83	279.15	8099.50	10.30%	6001.00	21.06%	2.96%	3.90%
ASIANPAINT	2817.00	-69.30	-2.40%	9.58	271.23	2985.70	5.65%	2124.75	32.58%	4.39%	24.37%
AXISBANK	1299.00	37.00	2.93%	77.77	1003.02	1308.00	0.69%	933.50	39.15%	-1.87%	21.26%
BAJAJ-AUTO	9570.00	16.00	0.17%	3.35	320.18	9888.00	3.22%	7089.35	34.99%	5.98%	9.01%
BAJAJFINSV	2002.60	-8.60	-0.43%	10.63	213.04	2195.00	8.77%	1617.00	23.85%	-3.45%	18.22%
BAJFINANCE	944.80	-4.20	-0.44%	44.52	422.30	1102.50	14.30%	710.52	32.97%	-6.71%	-86.98%
BEL	417.55	3.85	0.93%	176.75	739.06	436.00	4.23%	240.25	73.80%	6.23%	52.66%
BHARTIARTL	2021.00	-5.90	-0.29%	48.43	979.18	2174.50	7.06%	1559.50	29.59%	-2.71%	25.43%
CIPLA	1433.50	-14.80	-1.02%	17.76	254.55	1673.00	14.32%	1335.00	7.38%	-4.55%	-1.40%
COALINDIA	431.70	2.80	0.65%	171.25	748.05	442.00	2.33%	349.25	23.61%	11.88%	16.39%
DRREDDY	1191.50	0.20	0.02%	28.35	336.00	1379.70	13.64%	1020.00	16.81%	-6.88%	-12.04%
EICHERMOT	7370.00	-34.00	-0.46%	4.26	311.61	7613.50	3.20%	4646.00	58.63%	2.42%	46.37%
ETERNAL	298.80	4.25	1.44%	484.89	1438.56	368.45	18.90%	194.80	53.39%	-1.17%	#VALUE!
GRASIM	2796.00	21.80	0.79%	4.52	126.51	2977.80	6.11%	2276.95	22.80%	-2.20%	17.35%
HCLTECH	1669.90	4.90	0.29%	24.71	412.02	2012.20	17.01%	1302.75	28.18%	-0.49%	-16.55%
HDFCBANK	925.00	-12.35	-1.32%	366.88	3411.41	1020.50	9.36%	812.15	13.90%	-6.41%	-43.42%
HDFCLIFE	743.90	-4.60	-0.61%	29.10	217.37	820.75	9.36%	584.30	27.31%	-3.73%	22.98%
HINDALCO	955.90	19.60	2.09%	70.51	670.64	970.80	1.53%	546.45	74.93%	9.88%	62.99%
HINDUNILVR	2350.00	-39.50	-1.65%	10.28	242.02	2750.00	14.55%	2136.00	10.02%	5.70%	-2.15%
ICICIBANK	1416.60	-20.40	-1.42%	138.32	1971.89	1500.00	5.56%	1186.00	19.44%	5.20%	14.97%
INDIGO	4738.00	-21.50	-0.45%	10.59	501.71	6232.50	23.98%	3945.00	20.10%	-2.08%	12.55%
INFY	1608.90	9.90	0.62%	75.57	1207.97	1982.80	18.86%	1307.00	23.10%	0.05%	-18.71%
ITC	334.85	0.15	0.04%	149.13	499.44	471.50	28.98%	333.45	0.42%	-16.35%	-24.77%
JIOFIN	287.30	2.70	0.95%	67.01	191.80	338.60	15.15%	198.65	44.63%	-5.37%	1.44%
JSWSTEEL	1185.70	7.60	0.65%	22.82	271.17	1223.90	3.12%	880.00	34.74%	4.67%	30.89%
KOTAKBANK	420.20	-6.30	-1.48%	108.18	458.75	460.38	8.73%	344.75	21.89%	-2.02%	21.43%
LT	3868.00	-19.40	-0.50%	19.14	742.48	4195.00	7.79%	2965.30	30.44%	-4.58%	9.93%
M&M	3646.50	-15.00	-0.41%	15.73	574.99	3839.90	5.04%	2425.00	50.37%	-0.49%	18.39%
MARUTI	16148.00	-278.00	-1.69%	2.40	389.34	17370.00	7.04%	11059.45	46.01%	-0.58%	41.22%
MAXHEALTH	1034.60	6.40	0.62%	32.16	332.14	1314.30	21.28%	940.05	10.06%	-4.91%	-10.58%
NESTLEIND	1307.00	-11.70	-0.89%	9.04	118.79	1332.70	1.93%	1055.00	23.89%	6.49%	-41.34%
NTPC	349.00	11.10	3.28%	203.90	708.53	371.45	6.04%	292.80	19.19%	3.95%	9.62%
ONGC	247.98	4.20	1.72%	330.93	822.21	270.47	8.32%	205.00	20.97%	2.42%	-7.32%
POWERGRID	258.20	-0.60	-0.23%	154.35	398.77	322.00	19.81%	247.30	4.41%	-1.82%	-13.65%
RELIANCE	1458.80	6.00	0.41%	83.21	1213.44	1611.80	9.49%	1114.85	30.85%	-6.66%	16.98%
SBILIFE	2067.40	-15.00	-0.72%	9.43	195.32	2109.60	2.00%	1372.55	50.62%	2.79%	40.86%
SBIN	1030.00	1.55	0.15%	73.70	756.22	1030.40	0.04%	680.00	51.47%	6.78%	38.37%
SHRIRAMFIN	979.80	0.75	0.08%	38.47	377.17	1025.60	4.47%	493.35	98.60%	15.45%	84.03%
SUNPHARMA	1706.30	-22.40	-1.30%	24.80	421.95	1851.20	7.83%	1548.00	10.23%	-3.61%	-3.14%
TATACONSUM	1169.00	-20.40	-1.72%	5.78	67.85	1220.90	4.25%	926.05	26.24%	3.49%	22.27%
TMPV	349.00	-0.75	-0.21%	62.49	219.47	786.65	55.63%	337.70	3.35%	0.66%	#VALUE!
TATASTEEL	189.35	6.78	3.71%	559.07	1051.73	190.65	0.68%	122.62	54.42%	6.21%	43.27%
TCS	3197.80	-70.20	-2.15%	35.39	1134.62	4322.95	26.03%	2866.60	11.55%	1.47%	-23.39%
TECHM	1592.20	-22.60	-1.40%	15.70	251.06	1736.40	8.30%	1209.40	31.65%	2.31%	-5.32%
TITAN	4215.00	-24.20	-0.57%	9.98	423.77	4312.10	2.25%	2925.00	44.10%	9.25%	23.22%
TRENT	3930.00	8.10	0.21%	7.22	283.02	6523.85	39.76%	3827.80	2.67%	-3.77%	-40.43%
ULTRACEMCO	12242.00	198.00	1.64%	4.09	499.68	13097.00	6.53%	10047.85	21.84%	2.74%	10.85%
WIPRO	260.95	-3.25	-1.23%	56.26	146.73	324.60	19.61%	228.00	14.45%	1.38%	-12.09%

## Disclaimer / Disclosures

### ANALYST CERTIFICATION

I, Mrs. Vaishali Parekh B.com, Research Analyst, author and the name subscribed to this report, hereby certify that all of the views expressed in this research report accurately reflect our views about the subject issuer(s) or securities. We also certify that no part of our compensation was, is, or will be directly or indirectly related to the specific recommendation(s) or view(s) in this report.

Terms & conditions and other disclosures:

Prabhudas Lilladher Pvt. Ltd, Mumbai, India (hereinafter referred to as "PL") is engaged in the business of Stock Broking, Portfolio Manager, Depository Participant and distribution for third party financial products. PL is a subsidiary of Prabhudas Lilladher Advisory Services Pvt Ltd. which has its various subsidiaries engaged in business of commodity broking, investment banking, financial services (margin funding) and distribution of third party financial/other products, details in respect of which are available at [www.plindia.com](http://www.plindia.com)

This document has been prepared by the Research Division of PL and is meant for use by the recipient only as information and is not for circulation. This document is not to be reported or copied or made available to others without prior permission of PL. It should not be considered or taken as an offer to sell or a solicitation to buy or sell any security.

The information contained in this report has been obtained from sources that are considered to be reliable. However, PL has not independently verified the accuracy or completeness of the same. Neither PL nor any of its affiliates, its directors or its employees accepts any responsibility of whatsoever nature for the information, statements and opinion given, made available or expressed herein or for any omission therein.

Recipients of this report should be aware that past performance is not necessarily a guide to future performance and value of investments can go down as well. The suitability or otherwise of any investments will depend upon the recipient's particular circumstances and, in case of doubt, advice should be sought from an independent expert/advisor.

Either PL or its affiliates or its directors or its employees or its representatives or its clients or their relatives may have position(s), make market, act as principal or engage in transactions of securities of companies referred to in this report and they may have used the research material prior to publication.

PL may from time to time solicit or perform investment banking or other services for any company mentioned in this document.

PL is registered as Research Analyst under Securities and Exchange Board of India (Research Analysts) Regulations, 2014 PL submits that no material disciplinary action has been taken on us by any Regulatory Authority impacting Equity Research Analysis activities.

PL or its research analysts or its associates or his relatives do not have any financial interest in the subject company.

PL or its research analysts or its associates or his relatives do not have actual/beneficial ownership of one per cent or more securities of the subject company at the end of the month immediately preceding the date of publication of the research report.

PL or its research analysts or its associates or his relatives do not have any material conflict of interest at the time of publication of the research report.

PL or its associates might have received compensation from the subject company in the past twelve months.

PL or its associates might have managed or co-managed public offering of securities for the subject company in the past twelve months or mandated by the subject company for any other assignment in the past twelve months.

PL or its associates might have received any compensation for investment banking or merchant banking or brokerage services from the subject company in the past twelve months.

PL or its associates might have received any compensation for products or services other than investment banking or merchant banking or brokerage services from the subject company in the past twelve months PL or its associates might have received any compensation or other benefits from the subject company or third party in connection with the research report.

PL encourages independence in research report preparation and strives to minimize conflict in preparation of research report. PL or its analysts did not receive any compensation or other benefits from the subject Company or third party in connection with the preparation of the research report. PL or its Research Analysts do not have any material conflict of interest at the time of publication of this report.

It is confirmed that Mrs. Vaishali Parekh B.com, Research Analyst of this report has not received any compensation from the companies mentioned in the report in the preceding twelve months compensation of our Research Analysts is not based on any specific merchant banking, investment banking or brokerage service transactions.

The Research analysts for this report certifies that all of the views expressed in this report accurately reflect his or her personal views about the subject company or companies and its or their securities, and no part of his or her compensation was, is or will be, directly or indirectly related to specific recommendations or views expressed in this report.

The research analysts for this report has not served as an officer, director or employee of the subject company PL or its research analysts have not engaged in market making activity for the subject company

Our sales people, traders, and other professionals or affiliates may provide oral or written market commentary or trading strategies to our clients that reflect opinions that are contrary to the opinions expressed herein, and our proprietary trading and investing businesses may make investment decisions that are inconsistent with the recommendations expressed herein. In reviewing these materials, you should be aware that any or all of the foregoing, among other things, may give rise to real or potential conflicts of interest.

PL and its associates, their directors and employees may (a) from time to time, have a long or short position in, and buy or sell the securities of the subject company or (b) be engaged in any other transaction involving such securities and earn brokerage or other compensation or act as a market maker in the financial instruments of the subject company or act as an advisor or lender/borrower to the subject company or may have any other potential conflict of interests with respect to any recommendation and other related information and opinions.

**Regd. Office:** 3<sup>rd</sup> Floor, Sadhana House, 570, P. B. Marg, Behind Mahindra Tower, Worli, Mumbai - 400 018, India.