

* Sensex 83570.35 + 187.64

* Nifty 25694.35 + 28.75

* Bank Nifty 60095.15 + 515.00

Market Preview

Nifty consolidates within a range

Nifty once again slipped down from near the 25900 zone with profit booking witnessed and closed almost on a flat note near the 25700 level with bias still maintained intact and precariously placed. BankNifty gained during the session closing above the 60000 zone with bias maintained positive and would need to wait and watch for the upcoming result outcome of the frontline banking stocks. The market breadth was slightly on the weaker side with the advance decline indicating a ratio of 5:6 at close.

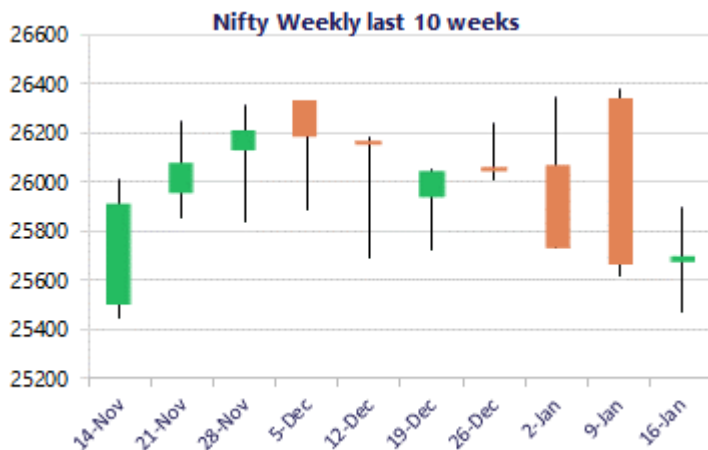
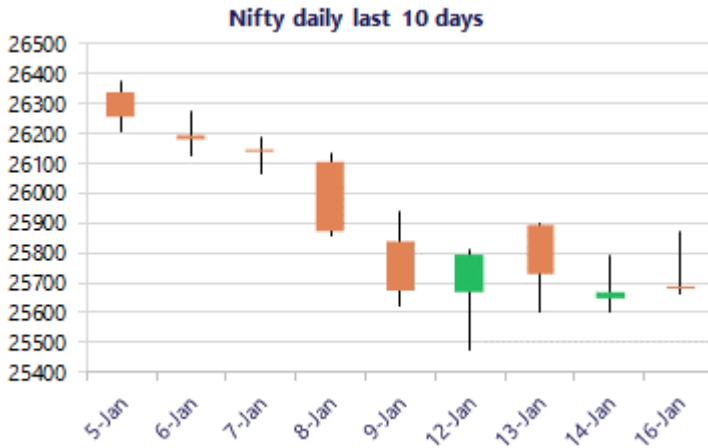
Market Forecast

Nifty daily range 25500-25900

Nifty, after witnessing a positive morning session, resisted near the 25870 zone and fizzled out the gains as the day progressed to end on a almost flat note near the 25700 level with overall rangebound moment visible since the last 5 sessions with the 50EMA zone at 25900 level acting as a tough barrier. The index has so far sustained above the near-term support of the 100 period MA at 25600 level and having the crucial support positioned near the important 200 period MA at 25000 zone, on the upside it would need to breach above the 25900 zone to establish conviction in the coming days.

BankNifty with the positive move in the early part of the session sustained above the 60000 zone and closed on a positive note near 60100 level, having the much-awaited result outcome of the frontline banking stocks like HDFC Bank and ICICI Bank during this weekend. The index has picked up well from the 50EMA zone at 58900 level and on the upside would need a decisive breach above the 60400 zone to trigger for a breakout and thereafter, expect for fresh upward move in the coming sessions.

The support for the day is seen at 25500 levels, while the resistance is seen at 25900 levels. BankNifty would have the daily range of 59600-60700 levels.



*Blue candle → Close rate > Open rate * Red candle → Close rate < Open rate

| Sensex | Period | Closing | % Chng | Trend | Reversal | 2 Sup | 1 Sup | Pivot | 1 Res | 2 Res |
|------------|---------|----------|--------|-------|----------|-------|-------|-------|-------|-------|
| Nifty | Daily | 25694.35 | 0.11% | -7 | 25748.30 | 25532 | 25613 | 25743 | 25824 | 25955 |
| | Weekly | 25694.35 | 0.04% | -2 | 26195.30 | 25266 | 25480 | 25689 | 25903 | 26112 |
| | Monthly | 26129.60 | -0.28% | 3 | 25829.00 | 25419 | 25774 | 26050 | 26405 | 26681 |
| Bank Nifty | Daily | 60095.15 | 0.86% | 1 | 59777.20 | 59222 | 59659 | 59947 | 60383 | 60672 |
| | Weekly | 60095.15 | 1.42% | -2 | 60273.50 | 58416 | 59255 | 59707 | 60547 | 60998 |
| | Monthly | 59581.85 | -0.29% | 3 | 58708.70 | 58069 | 58825 | 59469 | 60226 | 60870 |
| Sensex | Daily | 83570.35 | 0.23% | -8 | 83662.10 | 83042 | 83306 | 83721 | 83985 | 84399 |
| | Weekly | 83570.35 | -0.01% | -2 | 85422.85 | 82195 | 82883 | 83549 | 84237 | 84903 |
| | Monthly | 85220.60 | -0.57% | 3 | 84363.05 | 83208 | 84214 | 85159 | 86166 | 87111 |

Gainers - Losers (Nifty 500 Stocks)
Gainers

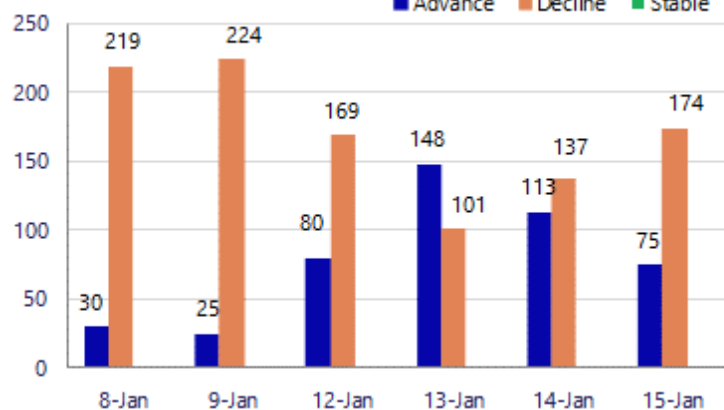
| Company Name | Last Price | % Gain | Volume |
|-----------------|------------|--------|----------|
| Federal Bank | 270.25 | 9.48% | 66823695 |
| Angel One | 2,752.20 | 8.98% | 5582508 |
| AU Small Financ | 1025.4 | 5.02% | 7201140 |
| 360 ONE WAM | 1,197.70 | 4.22% | 4335859 |
| Birlasoft | 433.10 | 3.22% | 1636442 |
| COFORGE | 1,732.30 | 3.01% | 3448026 |
| Bank of India | 157.34 | 2.92% | 17657163 |

Losers

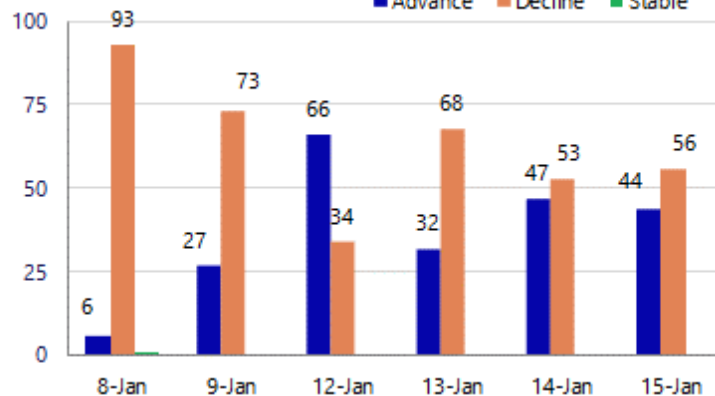
| Company Name | Last Price | % Loss | Volume |
|-----------------|------------|--------|---------|
| Authum Invest | 631.20 | -5.30% | 917246 |
| Apollo Tyres | 508.55 | -3.67% | 892412 |
| C. E. Info Syst | 1,473.70 | -3.45% | 105337 |
| Action Const | 848.15 | -3.02% | 276688 |
| Alkyl Amines | 1,595.20 | -2.89% | 83603 |
| CG Power | 561.7 | -2.63% | 3676806 |
| Cipla | 1397.5 | -2.58% | 4333246 |

Nifty Smallcap-250 stocks

■ Advance ■ Decline ■ Stable


Nifty Midcap-100 stocks

■ Advance ■ Decline ■ Stable



Nifty Daily chart with RSI indicator



BankNifty Daily chart with RSI indicator

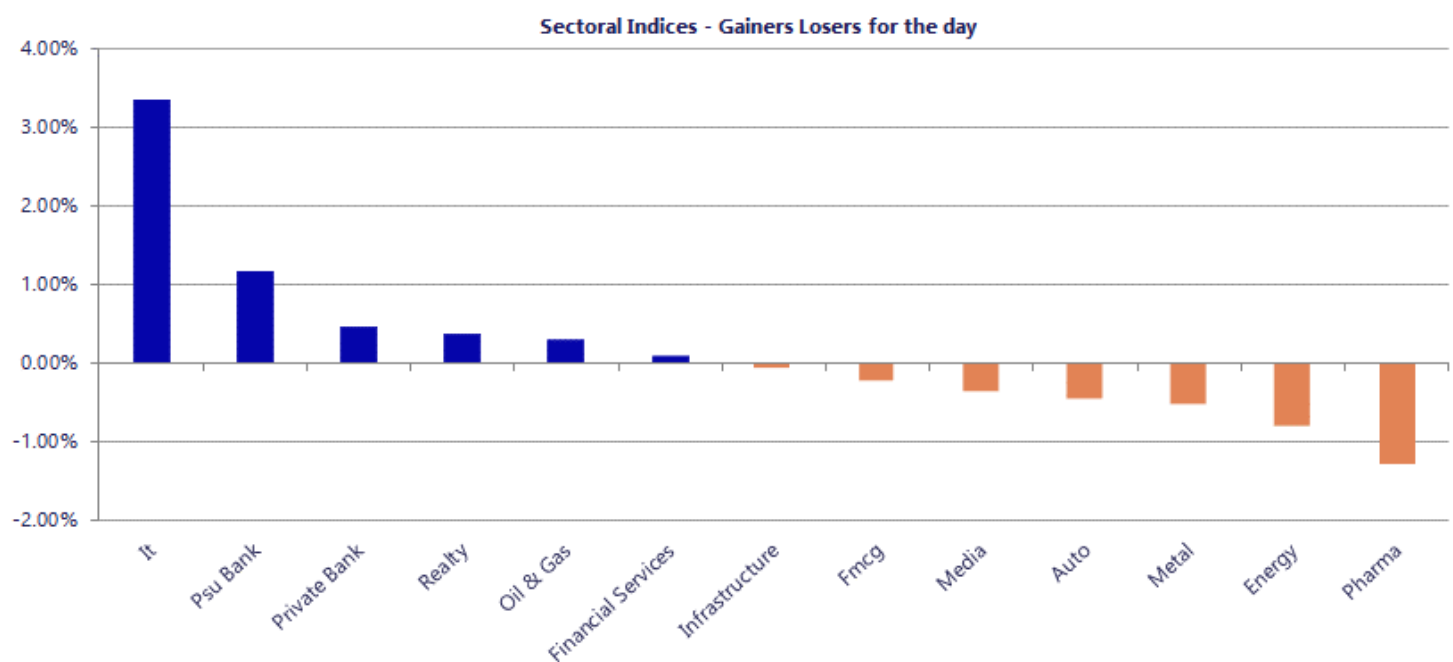


| Breakouts - Cross above 200 DMA | | | |
|---------------------------------|--------|----------|---------|
| Company Name | LCP | Change % | 200 DMA |
| Angel One | 2753 | 7.18 | 2568.46 |
| Ador Welding | 1054.8 | 4.89 | 1005.65 |
| Anlon Technolog | 407.6 | 4.71 | 389.26 |
| Shanthala | 32.8 | 3.90 | 31.57 |
| JTL Ind. | 72.46 | 3.40 | 70.08 |
| Metropolis | 1922.1 | 1.91 | 1886.1 |
| Fusion Finance | 175.3 | 1.59 | 172.56 |
| STEL Holdings | 446.8 | 1.31 | 441.03 |
| Manaksia | 69.3 | 1.26 | 68.44 |
| Salona Cotspin | 259 | 1.23 | 255.86 |
| Hindprakash Ind | 134.99 | 1.22 | 133.36 |
| DOMS Industries | 2574.8 | 1.16 | 2545.4 |
| Bazaar Style Re | 303.5 | 1.04 | 300.37 |
| Greenlam Ind | 245.64 | 0.98 | 243.25 |
| COFORGE | 1735.1 | 0.94 | 1718.9 |
| Panache Digilif | 295 | 0.81 | 292.63 |
| SBFC Finance | 107.57 | 0.76 | 106.76 |
| HANDSON GLOBAL | 64.5 | 0.61 | 64.11 |

* Stocks crossing above its Simple Moving Average (200DMA)

| Breakdown - Cross below 200 DMA | | | |
|---------------------------------|--------|----------|-----------|
| Company Name | LCP | Change % | 200 DMA |
| Veranda Learnin | 208.67 | -3.80 | 216.92 |
| Saakshi Medtech | 165 | -2.92 | 169.96 |
| Guj Themis | 359.5 | -2.68 | 369.41 |
| Gujarat Apollo | 409 | -2.20 | 418.18 |
| Redington | 264.55 | -2.11 | 270.24 |
| Sun Pharma | 1663.3 | -2.02 | 1697.63 |
| Synergy Green I | 510.75 | -2.00 | 521.15 |
| Jeyyam Global F | 48.7 | -1.89 | 49.64 |
| Ginni Filaments | 40.02 | -1.86 | 40.78 |
| Western Carrier | 111.04 | -1.53 | 112.77 |
| MRF | 143050 | -1.49 | 145209.45 |
| Divis Labs | 6247 | -1.49 | 6341.53 |
| STC India | 127.87 | -1.49 | 129.81 |
| Venkys | 1513 | -1.29 | 1532.81 |
| Wheels | 782.85 | -1.08 | 791.4 |
| Balaji Phosphat | 136.5 | -0.94 | 137.79 |
| Timken | 3003 | -0.92 | 3030.92 |
| Natco Pharma | 869.15 | -0.78 | 875.97 |

* Stocks crossing below its Simple Moving Average (200DMA)



Stocks witnessing a volume surge as compared to their 5 day average

Watch out for the stocks that have seen a huge spurt in its share price over the last three days

| Volume Shockers - NSE | | | | | |
|-----------------------|--------|-------|---------|-----------|-------|
| Company name | LCP | % Chg | Volume | Avg Vol * | % Chg |
| Poly Medicure | 1650.7 | -1.05 | 1090784 | 7315 | 14811 |
| SPML Infra | 193 | 16.02 | 2120958 | 17293 | 12165 |
| Axel Polymers | 48 | -0.29 | 80236 | 1858 | 4218 |
| Antony Waste | 547.65 | 17.24 | 249425 | 5872 | 4148 |
| Udayshivakumar | 26.38 | 19.96 | 179031 | 4576 | 3812 |
| Pratiksha Chem | 21.1 | 9.72 | 70559 | 1897 | 3620 |
| Best Agrolife | 30.85 | 6.97 | 1889685 | 51768 | 3550 |
| EID Parry | 932.45 | -1.26 | 415996 | 13351 | 3016 |
| Sical Logistics | 102.9 | 5 | 34455 | 1187 | 2803 |
| Nirlon | 500 | 0.54 | 266532 | 9619 | 2671 |
| Mukat Pipes | 16.98 | 20 | 82835 | 3250 | 2449 |
| Krishna Institu | 615 | -1.33 | 103914 | 4103 | 2433 |
| BHARAT Bhushan | 29 | 2.87 | 76023 | 3113 | 2342 |
| Sterling Wilson | 214.95 | 8.48 | 937252 | 40859 | 2194 |
| Bharti Hexacom | 1616 | -1.42 | 353334 | 16564 | 2033 |
| Bhakti Gems | 42.87 | -4.94 | 473308 | 22660 | 1989 |
| Hathway Bhawani | 13.49 | 0.6 | 44857 | 2286 | 1862 |
| IP Rings | 102.6 | -6.17 | 24421 | 1469 | 1562 |
| Patel Eng | 30.14 | 9.88 | 7057939 | 431757 | 1535 |
| Kotak Mahindra | 419.95 | -0.25 | 6108885 | 414355 | 1374 |
| Magnum Ventures | 21.88 | 0.37 | 41543 | 2868 | 1348 |

| Price Shockers - NSE | | | | |
|----------------------|---------|-----------|-------|---------|
| Company name | LCP | Prv Close | % Chg | Volume |
| Caspian | 59.94 | 8.22 | 629.2 | 38232 |
| Manaksia Alumin | 58.1 | 40.66 | 42.89 | 422712 |
| ANTELOPUS | 485.25 | 361.35 | 34.29 | 678605 |
| Premier Polyfil | 53.62 | 40.79 | 31.45 | 156509 |
| Avro India | 150.2 | 116 | 29.48 | 10146 |
| United Van Hors | 272 | 211.8 | 28.42 | 31949 |
| Xpro India | 1116.75 | 871.4 | 28.16 | 11009 |
| Jaro Insti Tech | 495.9 | 388.65 | 27.6 | 72260 |
| Hind Tin Works | 147.05 | 118.65 | 23.94 | 117694 |
| Kernex Micro | 1352.1 | 1092 | 23.82 | 167193 |
| RDB Infra | 87.8 | 71.1 | 23.49 | 1715098 |
| Ind-Swift Labs | 111 | 90.96 | 22.03 | 38204 |
| SPML Infra | 193 | 161.25 | 19.69 | 2120958 |
| Constronics Inf | 57 | 47.8 | 19.25 | 315 |
| JTL Ind. | 72.91 | 61.66 | 18.25 | 5218810 |
| Antony Waste | 547.65 | 467.35 | 17.18 | 249425 |
| Godavari Drugs | 99.89 | 85.58 | 16.72 | 71233 |
| UCAL | 124.8 | 107.15 | 16.47 | 36710 |
| CHOKSI ASIA | 127.9 | 110 | 16.27 | 9536 |
| Kinetic Trust | 74.34 | 64.22 | 15.76 | 19063 |
| Sinnar Bidi | 802.2 | 693 | 15.76 | 18 |

| Nifty 50 stocks - Summary Details | | | | | | | | | | | |
|-----------------------------------|----------|---------|--------|---------------|-----------------|----------|-----------------|----------|-----------------|----------------|-----------------|
| Symbol | LTP | Chng | % Chng | Volume (lacs) | Turnover (crs.) | 52w High | Diff with 52w H | 52w Low | Diff with 52w L | 30 days % chng | 365 days % chng |
| NIFTY 50 | 25694.35 | 28.75 | 0.11% | 4339.98 | 37153.73 | 26373.20 | 2.57% | 21743.65 | 18.17% | -1.46% | 11.17% |
| ADANIANT | 2159.00 | 5.70 | 0.26% | 7.58 | 164.84 | 2616.50 | 17.49% | 1967.52 | 9.73% | -5.66% | -3.23% |
| ADANIPTS | 1424.30 | -5.70 | -0.40% | 15.56 | 223.00 | 1549.00 | 8.05% | 1010.75 | 40.92% | -6.09% | 34.06% |
| APOLLOHOSP | 7230.00 | -42.50 | -0.58% | 5.02 | 362.49 | 8099.50 | 10.74% | 6001.00 | 20.48% | 2.42% | 6.33% |
| ASIANPAINT | 2756.70 | -57.20 | -2.03% | 11.43 | 319.23 | 2985.70 | 7.67% | 2124.75 | 29.74% | 1.78% | 24.92% |
| AXISBANK | 1296.00 | -2.80 | -0.22% | 51.75 | 670.02 | 1309.00 | 0.99% | 933.50 | 38.83% | 0.99% | 23.78% |
| BAJAJ-AUTO | 9487.00 | -92.50 | -0.97% | 5.28 | 501.36 | 9888.00 | 4.06% | 7089.35 | 33.82% | 6.26% | 11.44% |
| BAJAJFINSV | 2002.00 | 1.10 | 0.05% | 11.77 | 236.97 | 2195.00 | 8.79% | 1617.00 | 23.81% | -3.95% | 19.52% |
| BAJFINANCE | 951.00 | 5.05 | 0.53% | 107.10 | 1018.97 | 1102.50 | 13.74% | 710.52 | 33.85% | -7.01% | -86.77% |
| BEL | 410.60 | -7.00 | -1.68% | 188.87 | 777.12 | 436.00 | 5.83% | 240.25 | 70.91% | 7.23% | 60.86% |
| BHARTIARTL | 2018.00 | -4.50 | -0.22% | 73.11 | 1469.74 | 2174.50 | 7.20% | 1559.50 | 29.40% | -2.92% | 26.63% |
| CIPLA | 1398.00 | -36.50 | -2.54% | 43.33 | 603.65 | 1673.00 | 16.44% | 1335.00 | 4.72% | -5.46% | -0.33% |
| COALINDIA | 431.50 | -0.70 | -0.16% | 64.09 | 275.97 | 442.00 | 2.38% | 349.25 | 23.55% | 12.74% | 19.10% |
| DRREDDY | 1177.70 | -8.80 | -0.74% | 22.15 | 261.93 | 1379.70 | 14.64% | 1020.00 | 15.46% | -7.25% | -11.13% |
| EICHERMOT | 7300.00 | -58.00 | -0.79% | 4.41 | 323.88 | 7613.50 | 4.12% | 4646.00 | 57.12% | 1.78% | 48.97% |
| ETERNAL | 288.00 | -11.25 | -3.76% | 628.34 | 1833.19 | 368.45 | 21.83% | 194.80 | 47.84% | 0.40% | #VALUE! |
| GRASIM | 2810.90 | 15.10 | 0.54% | 6.79 | 190.66 | 2977.80 | 5.60% | 2294.15 | 22.52% | -1.44% | 22.19% |
| HCLTECH | 1696.50 | 40.00 | 2.41% | 30.98 | 523.70 | 1939.00 | 12.51% | 1302.75 | 30.22% | -0.28% | -16.13% |
| HDFCBANK | 930.55 | 5.10 | 0.55% | 377.79 | 3510.29 | 1020.50 | 8.81% | 812.73 | 14.50% | -7.59% | -43.25% |
| HDFCLIFE | 733.50 | -9.70 | -1.31% | 98.56 | 720.18 | 820.75 | 10.63% | 584.30 | 25.53% | -4.41% | 23.92% |
| HINDALCO | 932.00 | -23.35 | -2.44% | 40.38 | 380.56 | 970.80 | 4.00% | 546.45 | 70.56% | 12.12% | 69.46% |
| HINDUNILVR | 2361.80 | 8.30 | 0.35% | 13.68 | 322.79 | 2750.00 | 14.12% | 2136.00 | 10.57% | 4.11% | -3.98% |
| ICICIBANK | 1413.00 | -5.40 | -0.38% | 125.31 | 1771.11 | 1500.00 | 5.80% | 1186.00 | 19.14% | 3.84% | 15.34% |
| INDIGO | 4734.50 | 1.50 | 0.03% | 10.80 | 511.27 | 6232.50 | 24.04% | 3945.00 | 20.01% | -2.62% | 18.28% |
| INFY | 1689.10 | 89.30 | 5.58% | 193.35 | 3247.12 | 1971.80 | 14.34% | 1307.00 | 29.23% | 0.10% | -18.47% |
| ITC | 329.00 | -5.75 | -1.72% | 305.19 | 1010.33 | 471.50 | 30.22% | 328.55 | 0.14% | -16.33% | -23.76% |
| JIOFIN | 277.95 | -9.05 | -3.15% | 189.23 | 536.12 | 338.60 | 17.91% | 198.65 | 39.92% | -4.57% | 7.83% |
| JSWSTEEL | 1188.00 | 6.20 | 0.52% | 18.83 | 224.00 | 1223.90 | 2.93% | 882.50 | 34.62% | 5.00% | 33.73% |
| KOTAKBANK | 418.70 | -2.30 | -0.55% | 179.93 | 758.14 | 460.38 | 9.05% | 345.92 | 21.04% | -80.66% | -75.78% |
| LT | 3857.00 | -8.80 | -0.23% | 18.07 | 700.34 | 4195.00 | 8.06% | 2965.30 | 30.07% | -5.11% | 11.59% |
| M&M | 3660.00 | 10.50 | 0.29% | 20.90 | 770.99 | 3839.90 | 4.69% | 2425.00 | 50.93% | -0.82% | 21.66% |
| MARUTI | 15877.00 | -275.00 | -1.70% | 7.03 | 1121.08 | 17370.00 | 8.60% | 11059.45 | 43.56% | -2.24% | 40.48% |
| MAXHEALTH | 1033.50 | -0.10 | -0.01% | 25.84 | 266.69 | 1314.30 | 21.36% | 940.05 | 9.94% | -4.41% | -4.51% |
| NESTLEIND | 1315.10 | 8.00 | 0.61% | 14.92 | 196.22 | 1332.70 | 1.32% | 1055.00 | 24.65% | 5.56% | -41.58% |
| NTPC | 346.20 | -2.90 | -0.83% | 142.75 | 499.40 | 371.45 | 6.80% | 292.80 | 18.24% | 7.40% | 17.07% |
| ONGC | 247.23 | -1.00 | -0.40% | 122.86 | 302.44 | 270.47 | 8.59% | 205.00 | 20.60% | 4.29% | -2.93% |
| POWERGRID | 257.15 | -1.20 | -0.46% | 96.48 | 249.85 | 322.00 | 20.14% | 247.30 | 3.98% | -1.99% | -10.17% |
| RELIANCE | 1461.00 | 2.20 | 0.15% | 171.66 | 2513.37 | 1611.80 | 9.36% | 1114.85 | 31.05% | -6.28% | 17.66% |
| SBILIFE | 2080.50 | 11.70 | 0.57% | 7.54 | 156.77 | 2109.60 | 1.38% | 1372.55 | 51.58% | 2.12% | 40.98% |
| SBIN | 1040.60 | 12.25 | 1.19% | 110.51 | 1148.72 | 1047.45 | 0.65% | 680.00 | 53.03% | 6.77% | 40.97% |
| SHRIRAMFIN | 996.95 | 15.85 | 1.62% | 133.16 | 1335.68 | 1025.60 | 2.79% | 493.35 | 102.08% | 15.70% | 88.27% |
| SUNPHARMA | 1671.10 | -29.60 | -1.74% | 36.98 | 618.21 | 1851.20 | 9.73% | 1548.00 | 7.95% | -5.17% | -2.64% |
| TATACONSUM | 1188.00 | 16.60 | 1.42% | 12.50 | 148.74 | 1220.90 | 2.69% | 926.05 | 28.29% | 1.92% | 21.33% |
| TMPV | 354.00 | 4.20 | 1.20% | 107.35 | 381.64 | 786.65 | 55.00% | 337.70 | 4.83% | 0.68% | #VALUE! |
| TATASTEEL | 188.00 | -1.25 | -0.66% | 260.26 | 491.97 | 191.00 | 1.57% | 122.94 | 52.92% | 10.10% | 53.95% |
| TCS | 3209.00 | 73.50 | 2.34% | 42.93 | 1374.13 | 4313.90 | 25.61% | 2866.60 | 11.94% | -0.87% | -25.60% |
| TECHM | 1672.00 | 83.50 | 5.26% | 37.33 | 617.16 | 1736.40 | 3.71% | 1209.40 | 38.25% | 0.64% | -4.29% |
| TITAN | 4194.40 | -27.10 | -0.64% | 6.87 | 289.27 | 4312.10 | 2.73% | 2925.00 | 43.40% | 8.80% | 24.79% |
| TRENT | 3900.00 | -32.20 | -0.82% | 8.67 | 340.71 | 6519.00 | 40.17% | 3827.80 | 1.89% | -3.51% | -36.83% |
| ULTRACEMCO | 12377.00 | 122.00 | 1.00% | 4.54 | 559.78 | 13097.00 | 5.50% | 10047.85 | 23.18% | 4.54% | 15.45% |
| WIPRO | 266.80 | 6.60 | 2.54% | 120.21 | 321.94 | 324.60 | 17.81% | 228.00 | 17.02% | -0.15% | -10.84% |

Disclaimer / Disclosures

ANALYST CERTIFICATION

I, Mrs. Vaishali Parekh B.com, Research Analyst, author and the name subscribed to this report, hereby certify that all of the views expressed in this research report accurately reflect our views about the subject issuer(s) or securities. We also certify that no part of our compensation was, is, or will be directly or indirectly related to the specific recommendation(s) or view(s) in this report.

Terms & conditions and other disclosures:

Prabhudas Lilladher Pvt. Ltd, Mumbai, India (hereinafter referred to as "PL") is engaged in the business of Stock Broking, Portfolio Manager, Depository Participant and distribution for third party financial products. PL is a subsidiary of Prabhudas Lilladher Advisory Services Pvt Ltd. which has its various subsidiaries engaged in business of commodity broking, investment banking, financial services (margin funding) and distribution of third party financial/other products, details in respect of which are available at www.plindia.com

This document has been prepared by the Research Division of PL and is meant for use by the recipient only as information and is not for circulation. This document is not to be reported or copied or made available to others without prior permission of PL. It should not be considered or taken as an offer to sell or a solicitation to buy or sell any security.

The information contained in this report has been obtained from sources that are considered to be reliable. However, PL has not independently verified the accuracy or completeness of the same. Neither PL nor any of its affiliates, its directors or its employees accepts any responsibility of whatsoever nature for the information, statements and opinion given, made available or expressed herein or for any omission therein.

Recipients of this report should be aware that past performance is not necessarily a guide to future performance and value of investments can go down as well. The suitability or otherwise of any investments will depend upon the recipient's particular circumstances and, in case of doubt, advice should be sought from an independent expert/advisor.

Either PL or its affiliates or its directors or its employees or its representatives or its clients or their relatives may have position(s), make market, act as principal or engage in transactions of securities of companies referred to in this report and they may have used the research material prior to publication.

PL may from time to time solicit or perform investment banking or other services for any company mentioned in this document.

PL is registered as Research Analyst under Securities and Exchange Board of India (Research Analysts) Regulations, 2014 PL submits that no material disciplinary action has been taken on us by any Regulatory Authority impacting Equity Research Analysis activities.

PL or its research analysts or its associates or his relatives do not have any financial interest in the subject company.

PL or its research analysts or its associates or his relatives do not have actual/beneficial ownership of one per cent or more securities of the subject company at the end of the month immediately preceding the date of publication of the research report.

PL or its research analysts or its associates or his relatives do not have any material conflict of interest at the time of publication of the research report.

PL or its associates might have received compensation from the subject company in the past twelve months.

PL or its associates might have managed or co-managed public offering of securities for the subject company in the past twelve months or mandated by the subject company for any other assignment in the past twelve months.

PL or its associates might have received any compensation for investment banking or merchant banking or brokerage services from the subject company in the past twelve months.

PL or its associates might have received any compensation for products or services other than investment banking or merchant banking or brokerage services from the subject company in the past twelve months PL or its associates might have received any compensation or other benefits from the subject company or third party in connection with the research report.

PL encourages independence in research report preparation and strives to minimize conflict in preparation of research report. PL or its analysts did not receive any compensation or other benefits from the subject Company or third party in connection with the preparation of the research report. PL or its Research Analysts do not have any material conflict of interest at the time of publication of this report.

It is confirmed that Mrs. Vaishali Parekh B.com, Research Analyst of this report has not received any compensation from the companies mentioned in the report in the preceding twelve months compensation of our Research Analysts is not based on any specific merchant banking, investment banking or brokerage service transactions.

The Research analysts for this report certifies that all of the views expressed in this report accurately reflect his or her personal views about the subject company or companies and its or their securities, and no part of his or her compensation was, is or will be, directly or indirectly related to specific recommendations or views expressed in this report.

The research analysts for this report has not served as an officer, director or employee of the subject company PL or its research analysts have not engaged in market making activity for the subject company

Our sales people, traders, and other professionals or affiliates may provide oral or written market commentary or trading strategies to our clients that reflect opinions that are contrary to the opinions expressed herein, and our proprietary trading and investing businesses may make investment decisions that are inconsistent with the recommendations expressed herein. In reviewing these materials, you should be aware that any or all of the foregoing, among other things, may give rise to real or potential conflicts of interest.

PL and its associates, their directors and employees may (a) from time to time, have a long or short position in, and buy or sell the securities of the subject company or (b) be engaged in any other transaction involving such securities and earn brokerage or other compensation or act as a market maker in the financial instruments of the subject company or act as an advisor or lender/borrower to the subject company or may have any other potential conflict of interests with respect to any recommendation and other related information and opinions.

Regd. Office: 3rd Floor, Sadhana House, 570, P. B. Marg, Behind Mahindra Tower, Worli, Mumbai - 400 018, India.