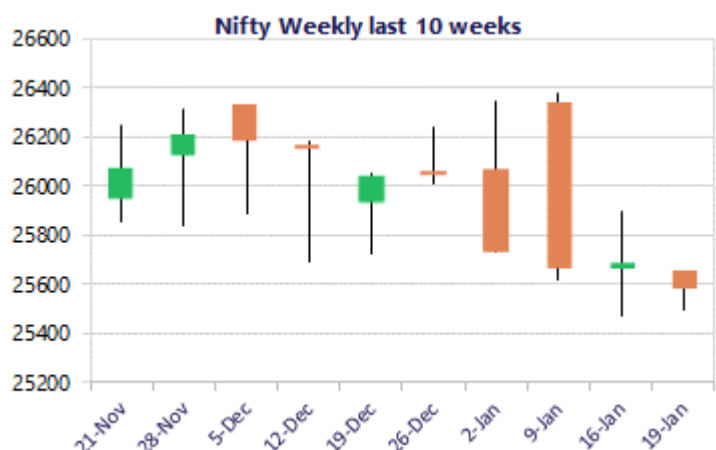
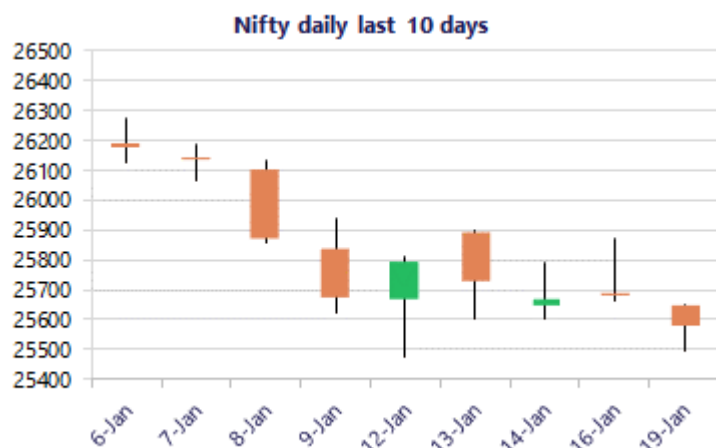


Date: 20th January 2026

* Sensex 83246.18 - 324.17

* Nifty 25585.50 - 108.85

* Bank Nifty 59891.35 - 203.80



*Blue candle → Close rate > Open rate * Red candle → Close rate < Open rate

Market Preview

Nifty sustains 25500 support zone

Nifty after witnessing a gap down opening sustained the important support of 25500 zone and finding a revival post lunch session minimized the loss to end near the 25600 level. BankNifty slipped once again from near the resistance zone of 60200 level, once again having gripped between the tight range of 60200 and 58800 levels for quite some time. The market breadth was overall weak with the advance decline indicating a ratio of 2:5 at close.

Market Forecast

Nifty daily range 25500-25800

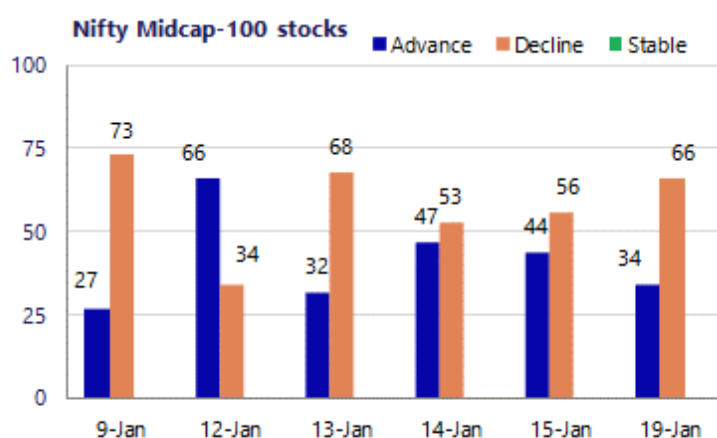
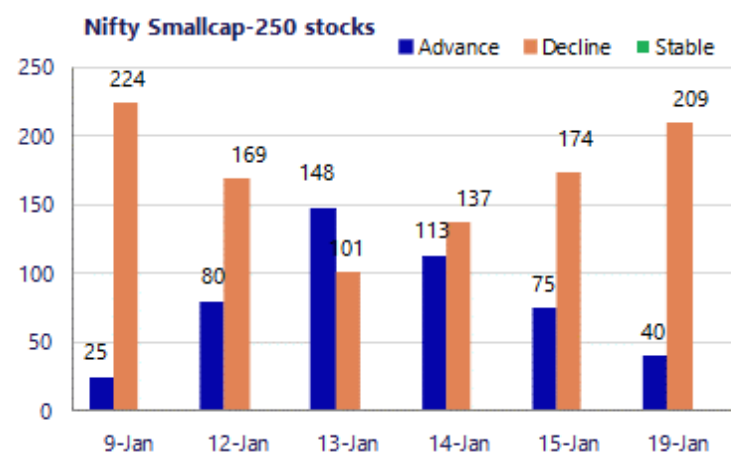
Nifty, after opening on a weak note with a huge gap down consolidated near the 25500 level sustaining the important support zone and thereafter, post lunch session witnessed some revival to end near the 25600 level with bias maintained with a cautiously positive approach as of now. As mentioned earlier, the index would have the crucial support positioned near the important 200 period MA at 25000 zone, which needs to be sustained and, on the upside, it would need to breach above the 50EMA zone at 25900 level acting as a tough barrier to establish conviction. BankNifty with some profit booking seen once again continue to move within the range having the tough resistance near the 60250 zone while on the downside, the important 50EMA level near the 58900 zone is positioned as the important near-term support which needs to be sustained. As said earlier, on the upside, it would need a decisive breach above the 60400 zone to trigger for a breakout and thereafter, expect for fresh upward move in the coming sessions.

The support for the day is seen at 25500 levels, while the resistance is seen at 25800 levels. BankNifty would have the daily range of 59500-60500 levels.

Sensex	Period	Closing	% Chng	Trend	Reversal	2 Sup	1 Sup	Pivot	1 Res	2 Res
Nifty	Daily	25585.50	-0.42%	-8	25655.50	25419	25502	25578	25661	25737
	Weekly	25694.35	0.04%	-2	26195.30	25266	25480	25689	25903	26112
	Monthly	26129.60	-0.28%	3	25829.00	25419	25774	26050	26405	26681
Bank Nifty	Daily	59891.35	-0.34%	2	59742.80	59352	59621	59864	60134	60377
	Weekly	60095.15	1.42%	-2	60273.50	58416	59255	59707	60547	60998
	Monthly	59581.85	-0.29%	3	58708.70	58069	58825	59469	60226	60870
Sensex	Daily	83246.18	-0.39%	-9	83391.80	82587	82916	83228	83558	83870
	Weekly	83570.35	-0.01%	-2	85422.85	82195	82883	83549	84237	84903
	Monthly	85220.60	-0.57%	3	84363.05	83208	84214	85159	86166	87111

Gainers - Losers (Nifty 500 Stocks)

Gainers				Losers			
Company Name	Last Price	% Gain	Volume	Company Name	Last Price	% Loss	Volume
CG Power	590	5.04%	17313668	Aster DM Health	573.00	-4.40%	752671
Bank of India	163.05	3.63%	35185511	eClerx Services	4459.3	-3.71%	57382
Colgate	2178	3.48%	1131540	Brigade Ent	807.00	-3.62%	1127102
Dixon Technolog	11,024.00	2.72%	704927	Concord Biotech	1,306.90	-3.26%	37613
Ceat	3,883.10	2.36%	192436	Aditya Birla Re	1,481.10	-3.18%	116146
Can Fin Homes	939.15	2.15%	573137	CG Consumer	243.2	-3.18%	2400050
Ashok Leyland	187.98	2.02%	10611929	C. E. Info Syst	1427	-3.17%	54388



Nifty Daily chart with RSI indicator



BankNifty Daily chart with RSI indicator



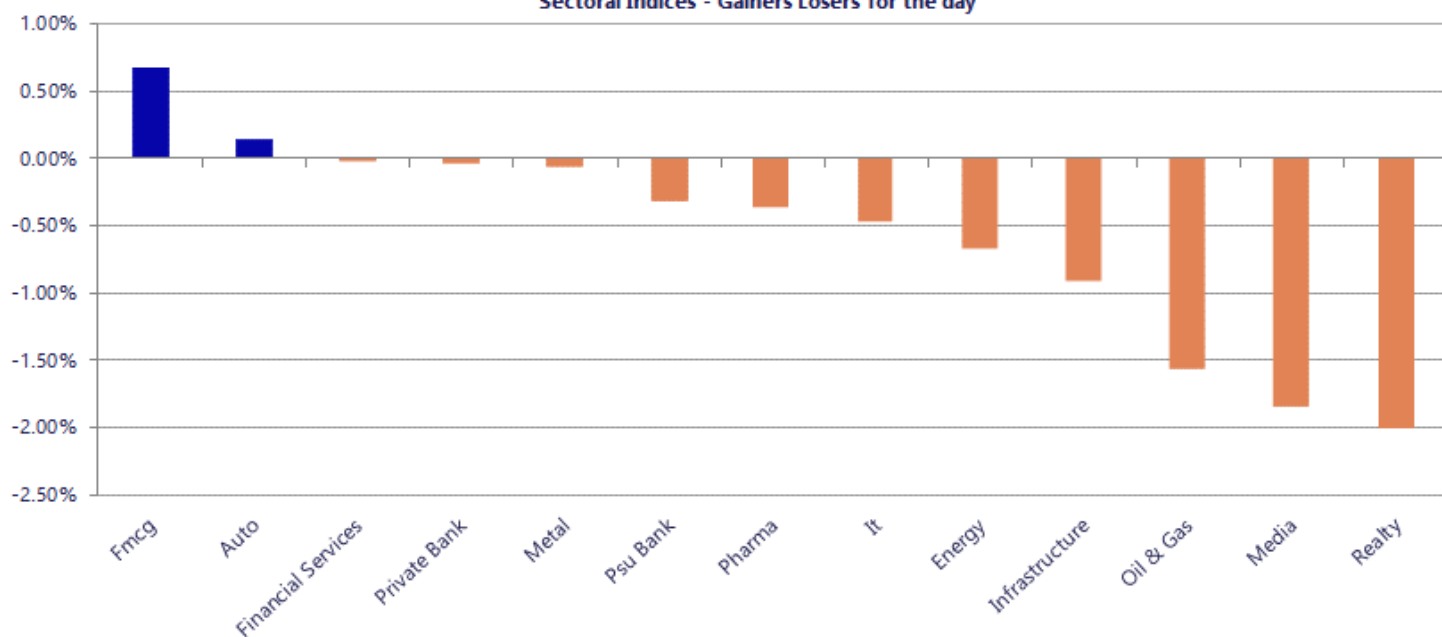
Breakouts - Cross above 200 DMA			
Company Name	LCP	Change %	200 DMA
Baazar Style Re	320.05	6.44	300.68
Saakshi Medtech	179.9	5.78	170.07
Century Extr	23.58	3.60	22.76
Shree Rama News	34	2.87	33.05
Freshara Agro	176	2.55	171.62
AKG Exim	13.28	2.15	13
Western Carrier	115.29	2.10	112.92
Kotak Mahindra	427.8	1.59	421.1
Bajaj Finance	970.35	1.54	955.59
Vishnusurya Pro	174.6	1.41	172.18
Advani Hotels	60.04	1.33	59.25
DOMS Industries	2576.9	1.29	2544.12
Gallantt Ispat	570.4	1.00	564.75
United Polyfab	29.29	0.76	29.07
AMD Industries	51.8	0.58	51.5
Ken Enterprises	44.75	0.27	44.63
ESAF SFB	29.4	0.24	29.33
Kaya	381.9	0.13	381.41

* Stocks crossing above its Simple Moving Average (200DMA)

Breakdown - Cross below 200 DMA			
Company Name	LCP	Change %	200 DMA
K2 Infragen	64.15	-5.61	67.96
Dishman Carboge	244.73	-2.80	251.77
Manaksia	66.68	-2.63	68.48
Prime Sec	265	-2.60	272.08
Wipro	246.2	-2.32	252.05
Medplus Health	811	-2.28	829.89
STEL Holdings	432	-2.10	441.27
Mirza Intl	33.89	-1.88	34.54
Hindprakash Ind	131	-1.80	133.4
Latent View	420.65	-1.79	428.3
AMSL	251.3	-1.66	255.55
ICICI Bank	1380.1	-1.65	1403.32
Lokesh Machines	180.5	-1.64	183.51
LE Travenues Te	225.8	-1.60	229.46
Blue Star	1774.8	-1.57	1803.1
Sky Gold	318.75	-1.56	323.8
Macpower	895.1	-1.49	908.66
Reliance	1414.2	-1.46	1435.22

* Stocks crossing below its Simple Moving Average (200DMA)

Sectoral Indices - Gainers Losers for the day



Stocks witnessing a volume surge as compared to their 5 day average

Watch out for the stocks that have seen a huge spurt in its share price over the last three days

Volume Shockers - NSE					
Company name	LCP	% Chg	Volume	Avg Vol *	% Chg
Brigade Ent	807	-3.66	749946	8748	8473
Jindal Saw	178.45	15.24	9344850	113747	8115
Netweb	3422.15	2.12	684405	13602	4932
A-1	33.6	5	3861800	87141	4332
Mangalam Cement	757.7	0.95	60932	1434	4149
PNB Gilts	84.75	5.01	907928	24120	3664
Balkrishna Ind	2434.95	-0.53	142930	4492	3082
Shivam Chemical	62.5	3.99	142500	5400	2539
Dodla	1200	-0.1	66355	2545	2507
AMD Industries	52.35	19.99	173597	7908	2095
Sigma Solve	56.89	-2.08	29844	1373	2074
Murudeshwar Cer	34.51	0.91	30449	1625	1774
Viceroy Hotels	140.85	2.07	36121	1972	1732
Bal Pharma	71.6	-0.28	19067	1124	1596
Hatsun Agro	949.3	3.08	15555	1008	1443
HINDPETRO	453.45	-0.95	1427928	93500	1427
AVI Photochem	31.65	4.98	64704	4283	1411
Wipro	246.2	-7.88	4121389	284258	1350
Aurum PropTech	199	3.4	64309	4559	1310
Innova Captab	666.35	-1.14	96315	7040	1268
Jubilant Pharmo	994.4	-4.99	38502	2836	1258

Price Shockers - NSE				
Company name	LCP	Prv Close	% Chg	Volume
Riddhi Siddhi	570	429	32.87	12827
Ausom Enterp	164.9	127.95	28.88	38541
AMD Industries	52.35	43.26	21.01	173597
Manaksia Alumin	65.03	54.1	20.2	414719
Forbes Gokak	361.05	308.7	16.96	10437
Hind Tin Works	153.6	131.45	16.85	46771
SPML Infra	194.15	166.35	16.71	419902
United Van Hors	298.55	256.2	16.53	71650
RMC Switchgears	375	322.8	16.17	39500
Shree Rama News	35.09	30.25	16	13923
YOGI	169.9	146.75	15.78	5541
Antony Waste	536.6	467.1	14.88	60204
Jay Ambe Superm	147.65	129	14.46	6400
Kinetic Eng	343	300.7	14.07	73244
Bhilwara Spin	120	105.5	13.74	3991
Federal Bank	280.2	246.9	13.49	1543276
ITCONS	356	316	12.66	23000
Jindal Saw	178.45	160	11.53	9344850
Alacrity Sec	60	53.82	11.48	64834
Sahara Housing	42.98	38.56	11.46	3019
United Interact	74.62	67	11.37	342

Nifty 50 stocks - Summary Details											
Symbol	LTP	Chng	% Chng	Volume (lacs)	Turnover (crs.)	52w High	Diff with 52w H	52w Low	Diff with 52w L	30 days % chng	365 days % chng
NIFTY 50	25585.50	-108.85	-0.42%	4430.60	33630.98	26373.20	2.99%	21743.65	17.67%	-0.64%	10.69%
ADANIENT	2129.00	-28.30	-1.31%	7.49	160.26	2616.50	18.63%	1967.52	8.21%	-4.03%	-9.67%
ADANIPTS	1403.30	-18.60	-1.31%	11.30	158.84	1549.00	9.41%	1010.75	38.84%	-5.14%	25.95%
APOLLOHOSP	7118.00	-117.50	-1.62%	3.64	261.53	8099.50	12.12%	6001.00	18.61%	2.61%	8.12%
ASIANPAINT	2736.80	-20.10	-0.73%	13.42	371.63	2985.70	8.34%	2124.75	28.81%	-1.22%	23.64%
AXISBANK	1306.80	12.60	0.97%	88.33	1154.51	1327.00	1.52%	933.50	39.99%	6.12%	26.04%
BAJAJ-AUTO	9415.00	-74.00	-0.78%	4.03	380.65	9888.00	4.78%	7089.35	32.80%	5.34%	10.62%
BAJAJFINSV	2019.70	17.20	0.86%	5.88	118.28	2195.00	7.99%	1617.00	24.90%	-1.61%	19.79%
BAJFINANCE	968.00	17.75	1.87%	70.00	676.60	1102.50	12.20%	715.63	35.27%	-4.82%	-86.76%
BEL	412.70	2.45	0.60%	80.12	330.74	436.00	5.34%	240.25	71.78%	5.73%	53.16%
BHARTIARTL	2010.00	-6.40	-0.32%	42.72	859.18	2174.50	7.56%	1559.50	28.89%	-4.07%	25.44%
CIPLA	1387.80	-9.70	-0.69%	16.54	229.19	1673.00	17.05%	1335.00	3.96%	-6.81%	-3.43%
COALINDIA	429.80	-1.20	-0.28%	71.05	305.76	442.00	2.76%	349.25	23.06%	12.95%	15.06%
DRREDDY	1169.90	-5.60	-0.48%	12.53	146.74	1379.70	15.21%	1020.00	14.70%	-7.94%	-12.09%
EICHERMOT	7313.50	-1.50	-0.02%	2.12	154.91	7613.50	3.94%	4646.00	57.41%	3.59%	43.94%
ETERNAL	279.45	-8.25	-2.87%	836.64	2359.24	368.45	24.16%	194.80	43.45%	1.14%	#VALUE!
GRASIM	2780.00	-29.60	-1.05%	5.87	164.09	2977.80	6.64%	2301.65	20.78%	0.38%	21.23%
HCLTECH	1714.20	16.20	0.95%	20.88	356.30	1837.95	6.73%	1302.75	31.58%	2.80%	-6.99%
HDFCBANK	925.95	-5.15	-0.55%	381.92	3542.56	1020.50	9.27%	812.73	13.93%	-6.36%	-43.33%
HDFCLIFE	737.00	4.45	0.61%	25.67	188.69	820.75	10.20%	595.25	23.81%	-4.16%	23.28%
HINDALCO	938.90	4.25	0.45%	40.07	376.77	970.80	3.29%	546.45	71.82%	11.65%	58.00%
HINDUNILVR	2414.40	54.00	2.29%	15.05	361.58	2750.00	12.20%	2136.00	13.03%	3.48%	-0.53%
ICICIBANK	1377.70	-33.10	-2.35%	233.03	3202.28	1500.00	8.15%	1186.00	16.16%	3.28%	13.93%
INDIGO	4937.00	197.00	4.16%	21.71	1066.62	6232.50	20.79%	3945.00	25.15%	-4.70%	16.58%
INFY	1679.90	-9.90	-0.59%	51.05	857.11	1966.95	14.59%	1307.00	28.53%	6.08%	-13.33%
ITC	332.80	3.60	1.09%	155.06	514.63	471.50	29.42%	327.30	1.68%	-18.05%	-24.73%
JIOFIN	274.90	-3.90	-1.40%	130.02	360.72	338.60	18.81%	198.65	38.38%	-5.57%	2.35%
JSWSTEEL	1181.30	-6.00	-0.51%	22.14	262.10	1223.90	3.48%	900.10	31.24%	9.67%	31.33%
KOTAKBANK	427.50	9.30	2.22%	222.19	947.32	460.38	7.14%	349.66	22.26%	-80.84%	-76.63%
LT	3863.70	7.30	0.19%	17.09	656.67	4195.00	7.90%	2965.30	30.30%	-5.10%	10.14%
M&M	3662.90	4.70	0.13%	17.16	626.24	3839.90	4.61%	2425.00	51.05%	1.03%	23.58%
MARUTI	16182.00	323.00	2.04%	3.85	620.18	17370.00	6.84%	11059.45	46.32%	-3.03%	32.74%
MAXHEALTH	1011.00	-26.00	-2.51%	23.23	236.45	1314.30	23.08%	940.05	7.55%	-3.36%	-0.20%
NESTLEIND	1316.70	0.80	0.06%	8.68	114.03	1332.70	1.20%	1055.00	24.81%	6.07%	-40.18%
NTPC	343.35	-3.00	-0.87%	99.74	343.74	371.45	7.56%	292.80	17.26%	7.90%	7.78%
ONGC	243.05	-4.12	-1.67%	64.59	157.75	270.47	10.14%	205.00	18.56%	6.44%	-4.26%
POWERGRID	257.15	-0.15	-0.06%	105.88	272.97	322.00	20.14%	247.30	3.98%	-1.17%	-13.85%
RELIANCE	1413.20	-44.70	-3.07%	203.92	2886.23	1611.80	12.32%	1114.85	26.76%	-5.47%	16.43%
SBILIFE	2079.00	-2.00	-0.10%	5.52	114.78	2109.60	1.45%	1372.55	51.47%	2.21%	41.30%
SBIN	1038.50	-3.80	-0.36%	54.60	567.64	1047.45	0.85%	680.00	52.72%	8.44%	38.29%
SHRIRAMFIN	1008.05	12.60	1.27%	49.09	493.70	1025.60	1.71%	493.35	104.33%	17.33%	86.69%
SUNPHARMA	1674.90	6.00	0.36%	29.75	496.49	1851.20	9.52%	1548.00	8.20%	-6.31%	-5.01%
TATACONSUM	1176.00	-13.10	-1.10%	5.48	64.78	1220.90	3.68%	926.05	26.99%	1.64%	24.44%
TMPV	343.55	-10.05	-2.84%	143.65	493.47	786.65	56.33%	337.70	1.73%	2.36%	#VALUE!
TATASTEEL	188.00	-0.21	-0.11%	197.03	370.85	191.00	1.57%	124.74	50.71%	10.82%	48.75%
TCS	3161.00	-45.70	-1.43%	33.88	1073.46	4294.00	26.39%	2866.60	10.27%	0.05%	-24.54%
TECHM	1710.40	39.90	2.39%	106.21	1831.00	1736.40	1.50%	1209.40	41.43%	5.85%	-0.33%
TITAN	4140.00	-56.90	-1.36%	3.66	152.00	4312.10	3.99%	2925.00	41.54%	6.80%	26.28%
TRENT	3942.00	42.30	1.08%	6.23	244.71	6498.00	39.34%	3827.80	2.98%	-5.09%	-38.97%
ULTRACEMCO	12261.00	-117.00	-0.95%	2.58	317.81	13097.00	6.38%	10047.85	22.03%	7.37%	17.64%
WIPRO	245.50	-21.95	-8.21%	658.31	1627.20	324.60	24.37%	228.00	7.68%	3.17%	-8.61%

Disclaimer / Disclosures

ANALYST CERTIFICATION

I, Mrs. Vaishali Parekh B.com, Research Analyst, author and the name subscribed to this report, hereby certify that all of the views expressed in this research report accurately reflect our views about the subject issuer(s) or securities. We also certify that no part of our compensation was, is, or will be directly or indirectly related to the specific recommendation(s) or view(s) in this report.

Terms & conditions and other disclosures:

Prabhudas Lilladher Pvt. Ltd, Mumbai, India (hereinafter referred to as "PL") is engaged in the business of Stock Broking, Portfolio Manager, Depository Participant and distribution for third party financial products. PL is a subsidiary of Prabhudas Lilladher Advisory Services Pvt Ltd. which has its various subsidiaries engaged in business of commodity broking, investment banking, financial services (margin funding) and distribution of third party financial/other products, details in respect of which are available at www.plindia.com

This document has been prepared by the Research Division of PL and is meant for use by the recipient only as information and is not for circulation. This document is not to be reported or copied or made available to others without prior permission of PL. It should not be considered or taken as an offer to sell or a solicitation to buy or sell any security.

The information contained in this report has been obtained from sources that are considered to be reliable. However, PL has not independently verified the accuracy or completeness of the same. Neither PL nor any of its affiliates, its directors or its employees accepts any responsibility of whatsoever nature for the information, statements and opinion given, made available or expressed herein or for any omission therein.

Recipients of this report should be aware that past performance is not necessarily a guide to future performance and value of investments can go down as well. The suitability or otherwise of any investments will depend upon the recipient's particular circumstances and, in case of doubt, advice should be sought from an independent expert/advisor.

Either PL or its affiliates or its directors or its employees or its representatives or its clients or their relatives may have position(s), make market, act as principal or engage in transactions of securities of companies referred to in this report and they may have used the research material prior to publication.

PL may from time to time solicit or perform investment banking or other services for any company mentioned in this document.

PL is registered as Research Analyst under Securities and Exchange Board of India (Research Analysts) Regulations, 2014 PL submits that no material disciplinary action has been taken on us by any Regulatory Authority impacting Equity Research Analysis activities.

PL or its research analysts or its associates or his relatives do not have any financial interest in the subject company.

PL or its research analysts or its associates or his relatives do not have actual/beneficial ownership of one per cent or more securities of the subject company at the end of the month immediately preceding the date of publication of the research report.

PL or its research analysts or its associates or his relatives do not have any material conflict of interest at the time of publication of the research report.

PL or its associates might have received compensation from the subject company in the past twelve months.

PL or its associates might have managed or co-managed public offering of securities for the subject company in the past twelve months or mandated by the subject company for any other assignment in the past twelve months.

PL or its associates might have received any compensation for investment banking or merchant banking or brokerage services from the subject company in the past twelve months.

PL or its associates might have received any compensation for products or services other than investment banking or merchant banking or brokerage services from the subject company in the past twelve months PL or its associates might have received any compensation or other benefits from the subject company or third party in connection with the research report.

PL encourages independence in research report preparation and strives to minimize conflict in preparation of research report. PL or its analysts did not receive any compensation or other benefits from the subject Company or third party in connection with the preparation of the research report. PL or its Research Analysts do not have any material conflict of interest at the time of publication of this report.

It is confirmed that Mrs. Vaishali Parekh B.com, Research Analyst of this report has not received any compensation from the companies mentioned in the report in the preceding twelve months compensation of our Research Analysts is not based on any specific merchant banking, investment banking or brokerage service transactions.

The Research analysts for this report certifies that all of the views expressed in this report accurately reflect his or her personal views about the subject company or companies and its or their securities, and no part of his or her compensation was, is or will be, directly or indirectly related to specific recommendations or views expressed in this report.

The research analysts for this report has not served as an officer, director or employee of the subject company PL or its research analysts have not engaged in market making activity for the subject company

Our sales people, traders, and other professionals or affiliates may provide oral or written market commentary or trading strategies to our clients that reflect opinions that are contrary to the opinions expressed herein, and our proprietary trading and investing businesses may make investment decisions that are inconsistent with the recommendations expressed herein. In reviewing these materials, you should be aware that any or all of the foregoing, among other things, may give rise to real or potential conflicts of interest.

PL and its associates, their directors and employees may (a) from time to time, have a long or short position in, and buy or sell the securities of the subject company or (b) be engaged in any other transaction involving such securities and earn brokerage or other compensation or act as a market maker in the financial instruments of the subject company or act as an advisor or lender/borrower to the subject company or may have any other potential conflict of interests with respect to any recommendation and other related information and opinions.

Regd. Office: 3rd Floor, Sadhana House, 570, P. B. Marg, Behind Mahindra Tower, Worli, Mumbai - 400 018, India.